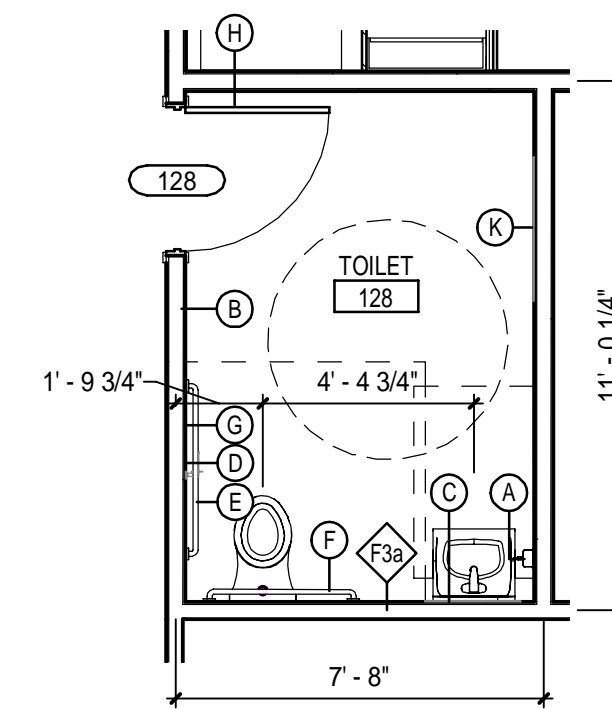
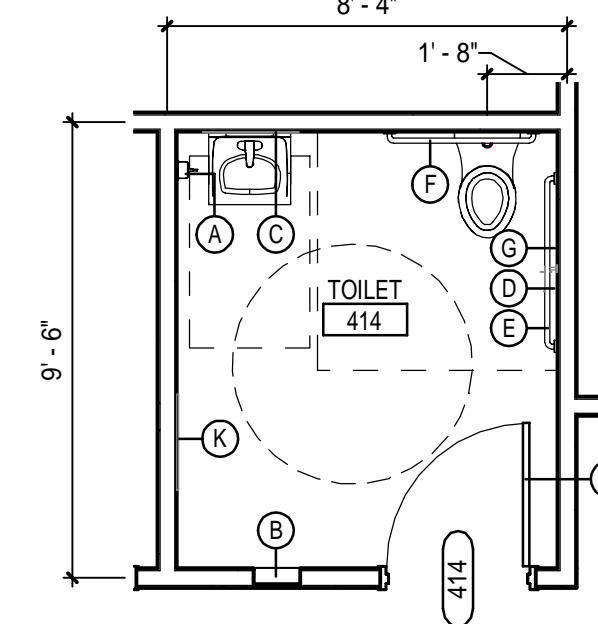


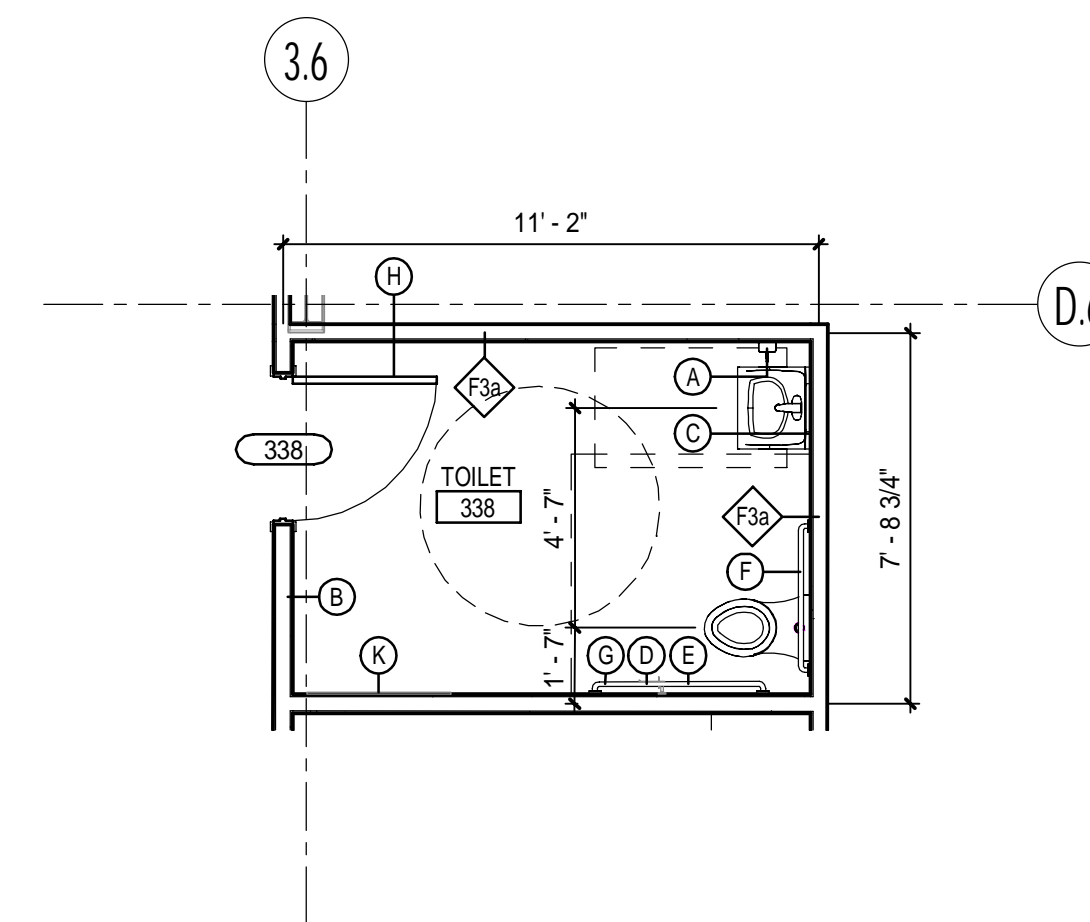
2ND FLOOR PLAN - ENLARGED - SINGLE TOILET
1/4" = 1'-0" (G11)



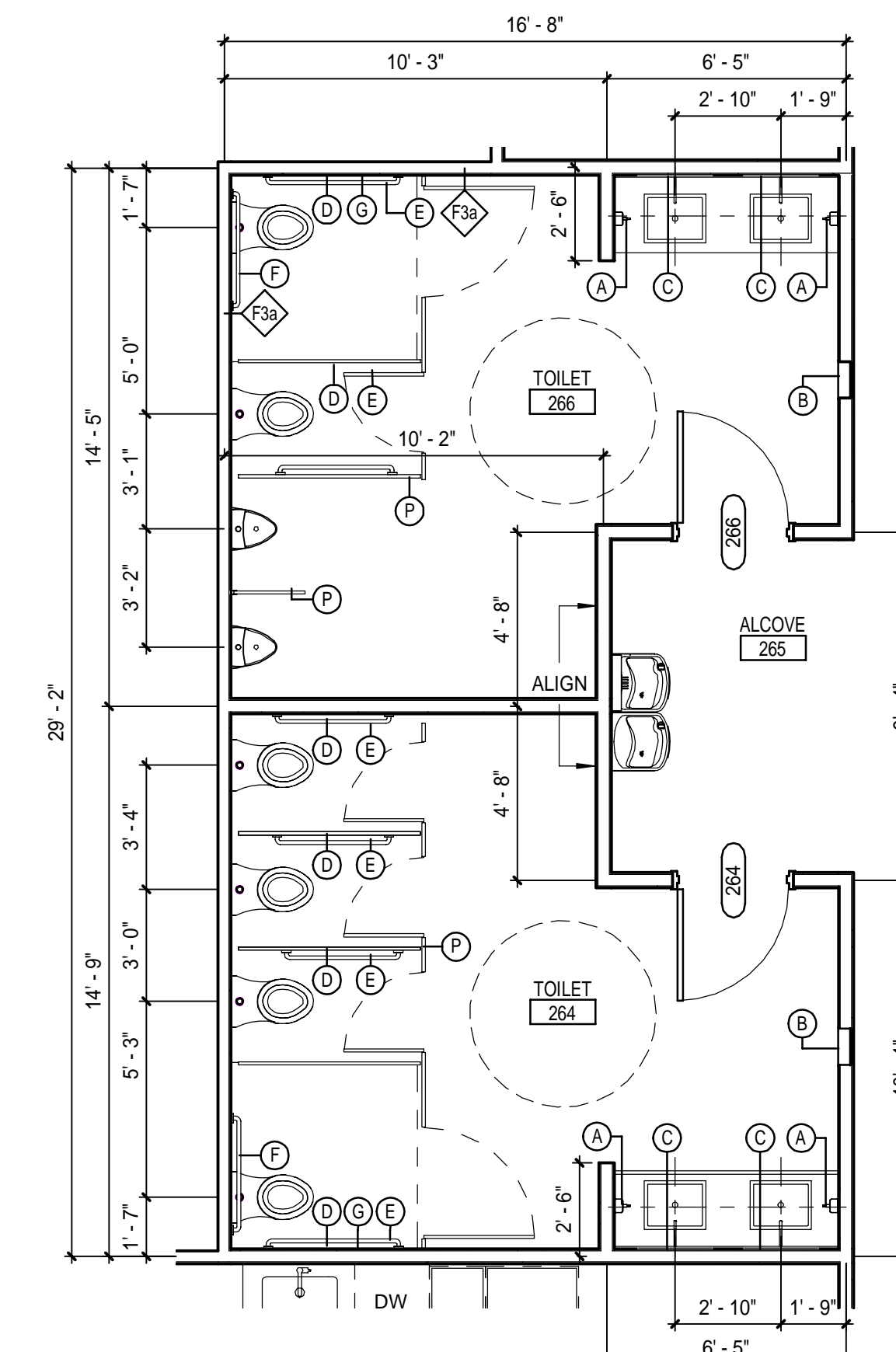
1ST FLOOR PLAN - ENLARGED - SINGLE TOILET
1/4" = 1'-0" (A15)



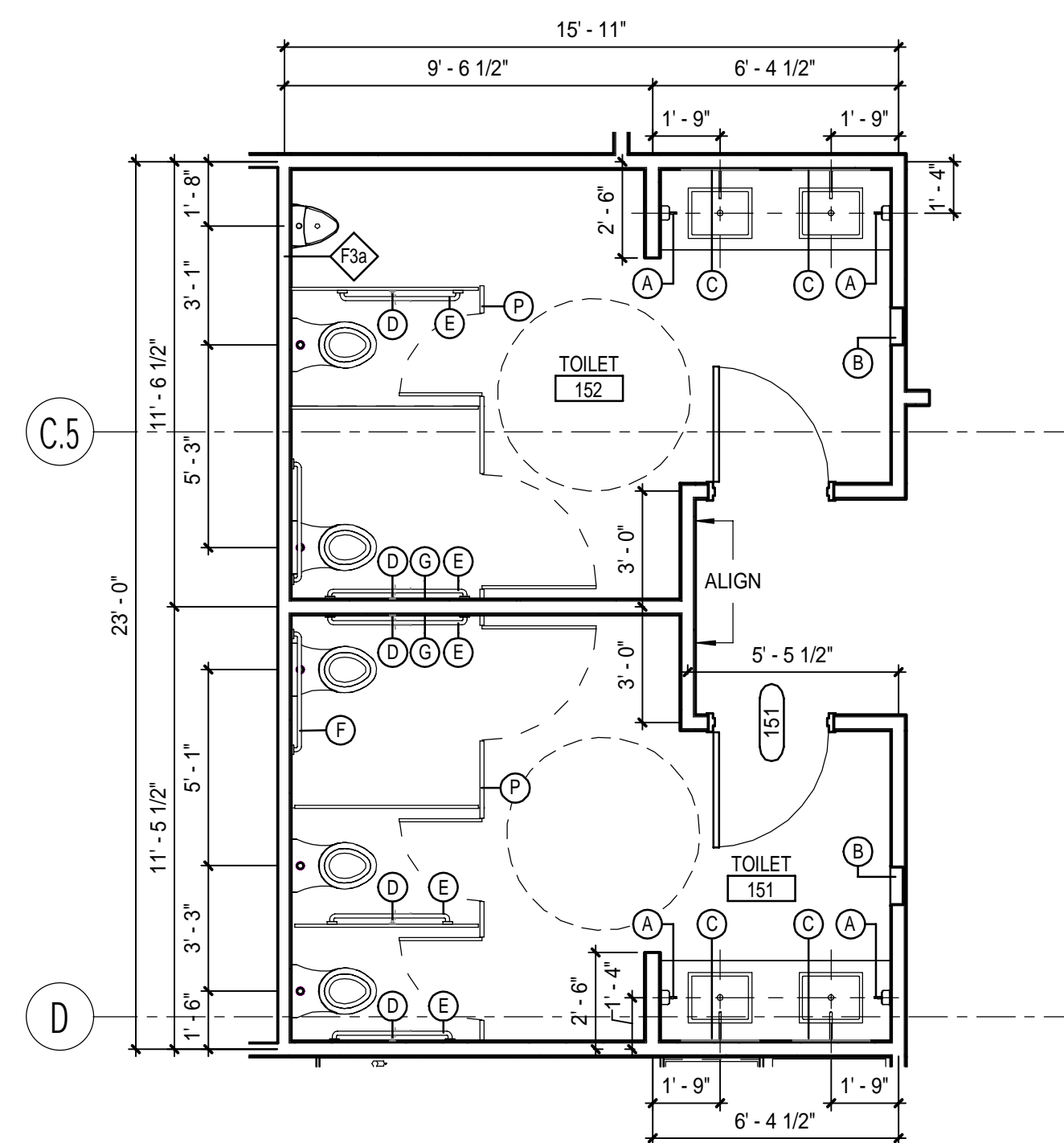
4TH FLOOR PLAN - ENLARGED - SINGLE TOILET
1/4" = 1'-0" (M1)



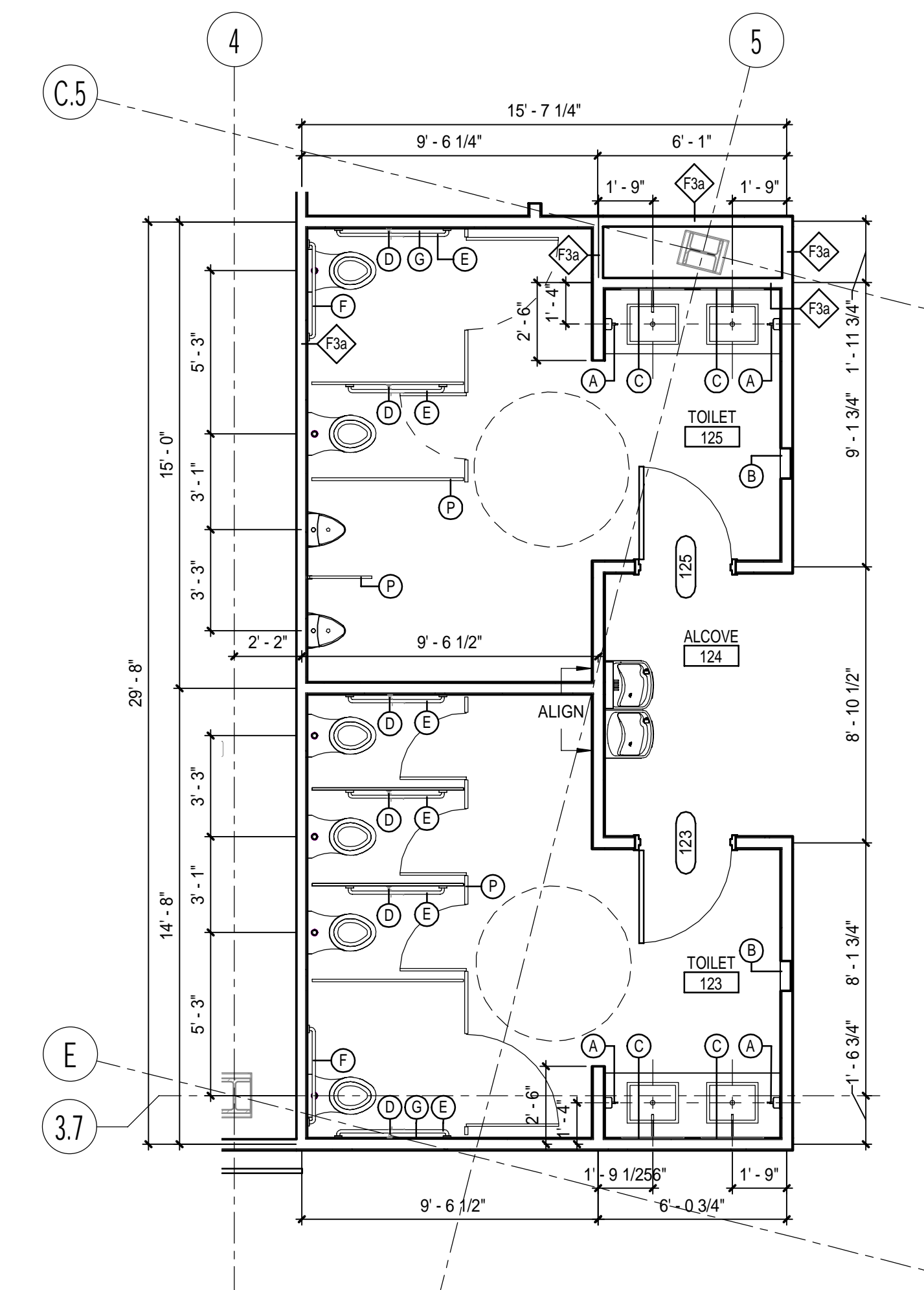
3RD FLOOR PLAN - ENLARGED - SINGLE TOILET
1/4" = 1'-0" (G5)



ENLARGED PLAN AREA B - BATHROOM
1/4" = 1'-0" (G1)



1ST FLOOR AREA B - ENLARGED PLAN - BATHROOMS
1/4" = 1'-0" (A11)



ENLARGED PLAN AREA A BATHROOMS
1/4" = 1'-0" (A1)

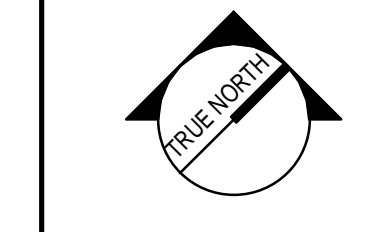
PLAN KEYNOTES:

- ① (11) "STEADYRACK" BIKE RACKS; PROVIDE BLOCKING AS NEEDED.
- ② ALIGN WALL FACE W/ ADJACENT CORE/SHELL WALL. ALIGN WALL TO BE PARALLEL W/ "C" LINE.
- ③ CENTER WALL ON COLUMN GRID.
- ④ COLUMN WRAP AS SHOWN SUPERCEDES COLUMN WRAP IN CORE/SHELL PACKAGE. MUST MAINTAIN FIRE RATING.
- ⑤ PROVIDE F3a TYPE WALL AROUND ALL MECH CHASES

■ NOT IN SCOPE

ISSUED FOR PERMITTING
02-05-2017

CURRENT ISSUE STATUS:

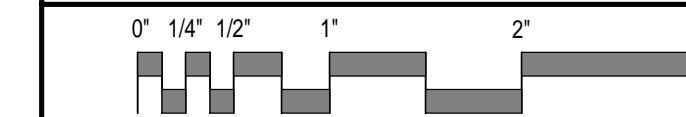


PROJECT NORTH:
SMRT Architects and Engineers
144 Fore Street/P.O. Box 618
Portland, Maine 04104

WEX
CORPORATE HEADQUARTERS

PORTLAND, ME
ENLARGED PLANS

SHEET TITLE:



SCALE: AS NOTED

PROJECT MANAGER: GWV PROJECT NO: 17120-01
A/E OF RECORD: GWV
JOB CAPTAIN: CBM
DRAWN BY: CBM
SMRT FILE: AE404-17120-01 SHEET No. AE404

NOT FOR CONSTRUCTION