

PLAN NOTES:

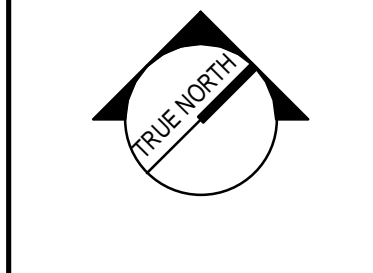
1. SEE G1001 FOR GENERAL PROJECT NOTES, LEGENDS AND ABBREVIATIONS.
2. SEE G1002 FOR GENERAL MOUNTING HEIGHTS, TOP OF WALL DETAILS AND PARTITION TYPES.
3. CONTRACTOR IS RESPONSIBLE FOR REVIEWING CODE COMPLIANCE PLANS AND NOTIFYING THE ARCHITECT OF CONFLICTS BETWEEN WHAT IS IN THE FIELD AND ON THE CODE DOCUMENTS.
4. DIMENSIONS ARE FACE OF CONCRETE, FACE OF MASONRY AND CENTERLINE OF STUD, UNLESS NOTED OTHERWISE.
5. WD & HM DOOR JAMBS (HINGE SIDE) SHALL BE 6" FROM CORNER IN STUD PARTITIONS AND 8" FROM CORNER IN MASONRY PARTITIONS UNLESS NOTED OTHERWISE.
6. TEMP DOOR JAMBS TO BE 12" FROM CENTER U.N.O.
7. REFER TO DETAILS FOR ADDITIONAL DIMENSIONING INFORMATION.
8. REFER TO ENLARGED PLANS FOR PARTITION TYPES AND DIMENSIONS IN AREAS WHICH ARE DETAILED AT A LARGER SCALE.
9. FURNITURE AND OWNER PROVIDED EQUIPMENT ARE INDICATED BY DASHED LINE TYPE.
10. CONTRACTOR IS RESPONSIBLE FOR THE COORDINATION OF OWNER PROVIDED EQUIPMENT INCLUDING BUT NOT LIMITED TO DIMENSIONAL INFORMATION, AND MECHANICAL, ELECTRICAL AND PLUMBING REQUIREMENTS.
11. UNTAGGED ARE TO BE S3.A.

FURNITURE NOTES:

1. SEE G1-001 FOR PROJECT GENERAL NOTES.
2. FURNITURE DEPICTED ON THIS PLAN IS NOT IN THE CONSTRUCTION CONTRACT AND IS SHOWN FOR LAYOUT AND COORDINATION PURPOSES ONLY.
3. REFER TO ELECTRICAL AND TECHNOLOGY DRAWINGS FOR INFORMATION REGARDING POWER AND DATA COORDINATION.

REV	DESCRIPTION	DATE

ISSUED FOR PERMITTING
02-05-2017
CURRENT ISSUE STATUS:

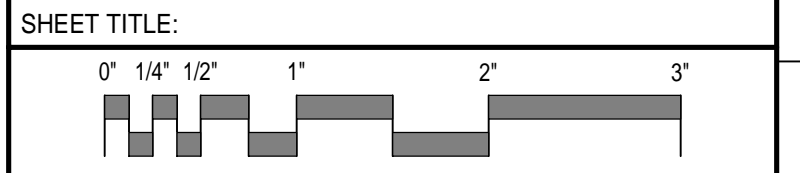


PROJECT NORTH:
SMRT Architects and Engineers
144 Fore Street/P.O. Box 618
Portland, Maine 04104

ARCHITECTURE | ENGINEERING | PLANNING | INTERIORS | ENERGY

WEX
CORPORATE HEADQUARTERS

PORTLAND, ME
AREA B - LEVEL FOUR FLOOR PLAN



SCALE: AS NOTED
PROJECT MANAGER: GWV PROJECT NO: 17120-01
A/E OF RECORD: GWV
JOB CAPTAIN: CBM
DRAWN BY: CBM
SMRT FILE: AE108-17120-01 SHEET No. **AE108**
©Copyright 2017 SMRT