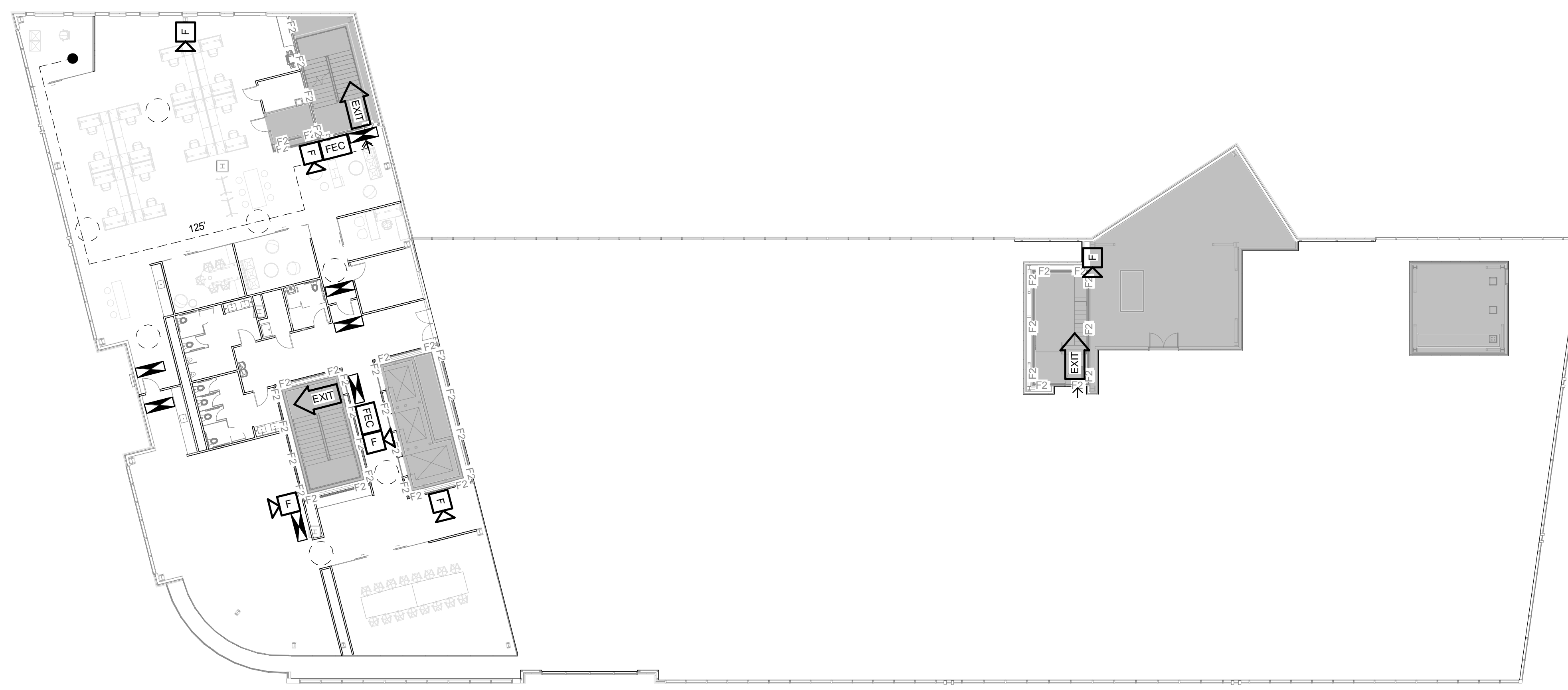


4TH FLOOR PLAN - CORE & SHELL PLAN (H3)  
1/16" = 1'-0"



4TH FLOOR PLAN - LIFE SAFETY - PROPOSED (B3)  
1/16" = 1'-0"

**LIFE SAFETY LEGEND**

- H2 — 2 HOUR RATED HORIZONTAL EXIT & SMOKE BARRIER
- O2 — 2 HOUR RATED OCCUPANCY SEPARATION & SMOKE BARRIER
- F2 — 2 HOUR RATED FIRE BARRIER
- F1 — 1 HOUR RATED FIRE BARRIER
- S2 — 2 HOUR RATED SMOKE BARRIER
- S1 — 1 HOUR RATED SMOKE BARRIER
- S0 — SMOKE PARTITION
- EXIT DISCHARGE
- SMOKE CONTAINMENT BARRIER
- ★ STANDPIPE OR HOSE VALVE CABINET
- Y FIRE DEPT. CONNECTION
- 177 — TRAVEL DISTANCE
- FE FIRE EXTINGUISHER CABINET
- FE FIRE EXTINGUISHER WALL HUNG
- EXIT EGRESS DOOR
- FIRE ALARM VISIBLE ONLY NOTIFICATION INDICATOR
- FIRE ALARM AUDIBLE/VISIBLE NOTIFICATION INDICATOR
- EXIT SIGN
- NOT IN SCOPE
- 5'-0" CLEARANCE

REV	DESCRIPTION	DATE

ISSUED FOR PERMITTING  
02-05-2017

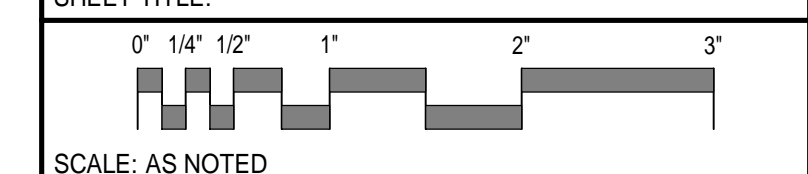
CURRENT ISSUE STATUS:

SMRT Architects and Engineers  
144 Fore Street/P.O. Box 618  
Portland, Maine 04104



WEX  
CORPORATE HEADQUARTERS  
PORTLAND, ME

LEVEL FOUR LIFE SAFETY PLAN



PROJECT MANAGER: GWV	PROJECT NO: 17120-01
A/E OF RECORD: Checker	
JOB CAPTAIN: CBM	
DRAWN BY: Author	
SMRT FILE: A-004-17120-01	SHEET No. A-004

NOT FOR CONSTRUCTION