

TOTAL POSTED OCCUPANCY = 600
 (INTERIOR OFFICE SPACE + EXTERIOR ROOF DECK)
 B-BUSINESS USE
 FOURTH FLOOR - 9,336 SF
 OCCUPANT LOAD - 9,336/100 = 94
 A-ASSEMBLY USE
 ROOF DECK - 19,450 SF
 OCCUPANT LOAD - POSTED AT 506

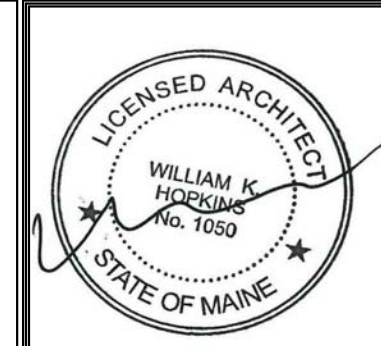
EXIT ACCESS REMOTENESS = 54'-7"
 REQUIRED REMOTENESS (FULLY SPRINKLED)
 BUILDING DIA. / 3 (163'-7" / 3 = 54'-6")
 54'-7" > 54'-6"

EXIT ACCESS REMOTENESS = 132'-7"
 REQUIRED REMOTENESS (FULLY SPRINKLED)
 BUILDING DIA. / 3 (248'-3" / 3 = 82'-9")
 132'-7" > 82'-9"

1 | 4TH FLOOR - LIFE SAFETY PLAN
 1/16" = 1'-0"

FIRE EXTINGUISHER		●
1 HOUR PARTITION/SHAFT		▬▬▬▬
2 HOUR PARTITION/SHAFT		▬▬▬▬▬▬
SMOKE DETECTOR		(SD)
MAXIMUM TRAVEL DISTANCE TO AN EXIT	
COMMON PATH OF TRAVEL LENGTH		→
EXIT ENTRANCE		⊥
EXIT ENTRANCE		→
EMERGENCY LIGHTING		⊥
ALARM AND STROBE		⊥ F
PULL STATION		F
STROBE		s▷

LIFE SAFETY LEGEND
 1/8" = 1'-0"



Prepared For:
 0 Hancock Street
 LLC

Issued:
 Issued For Construction - 11/15/2017
 Issued For Permit - 10/23/2017

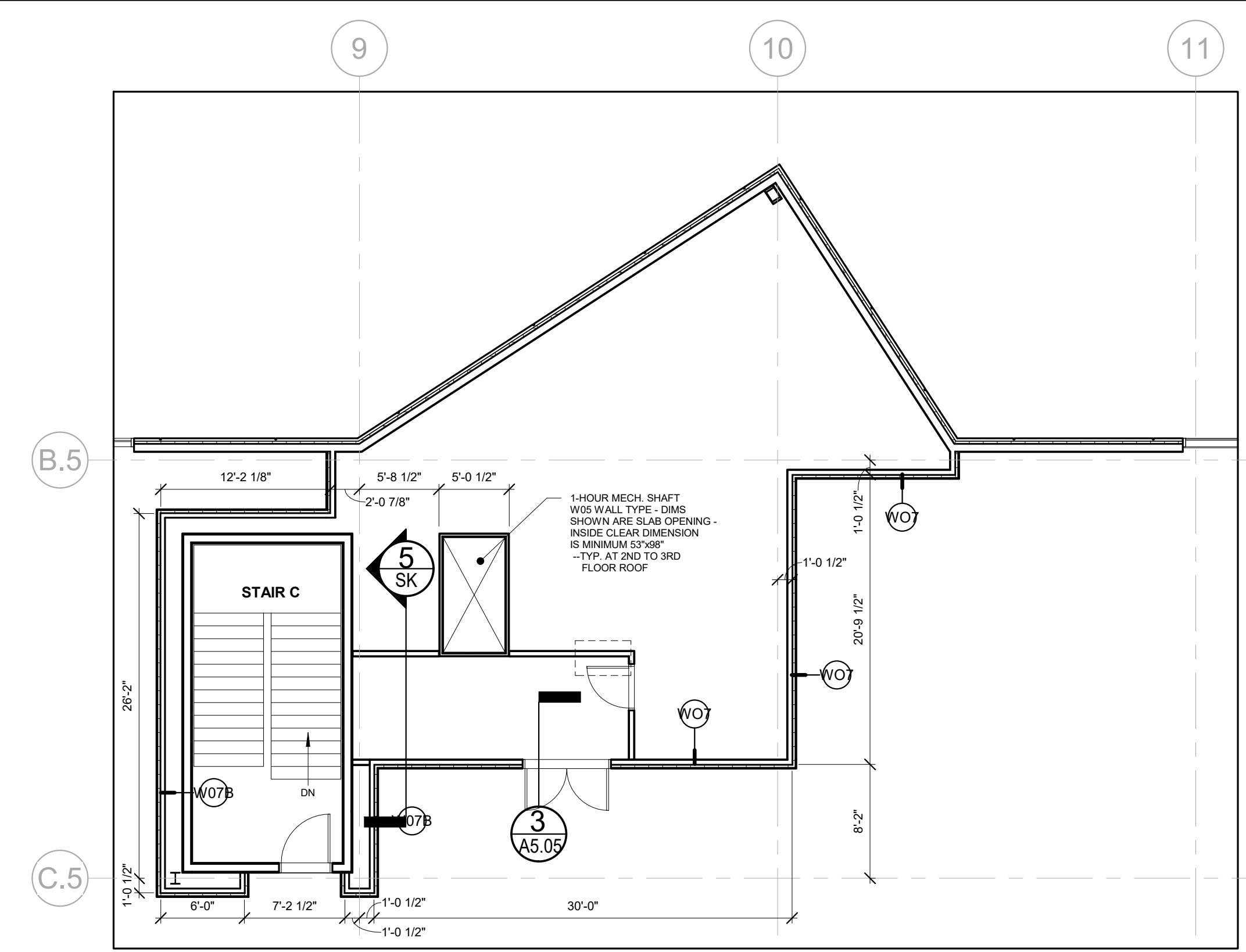
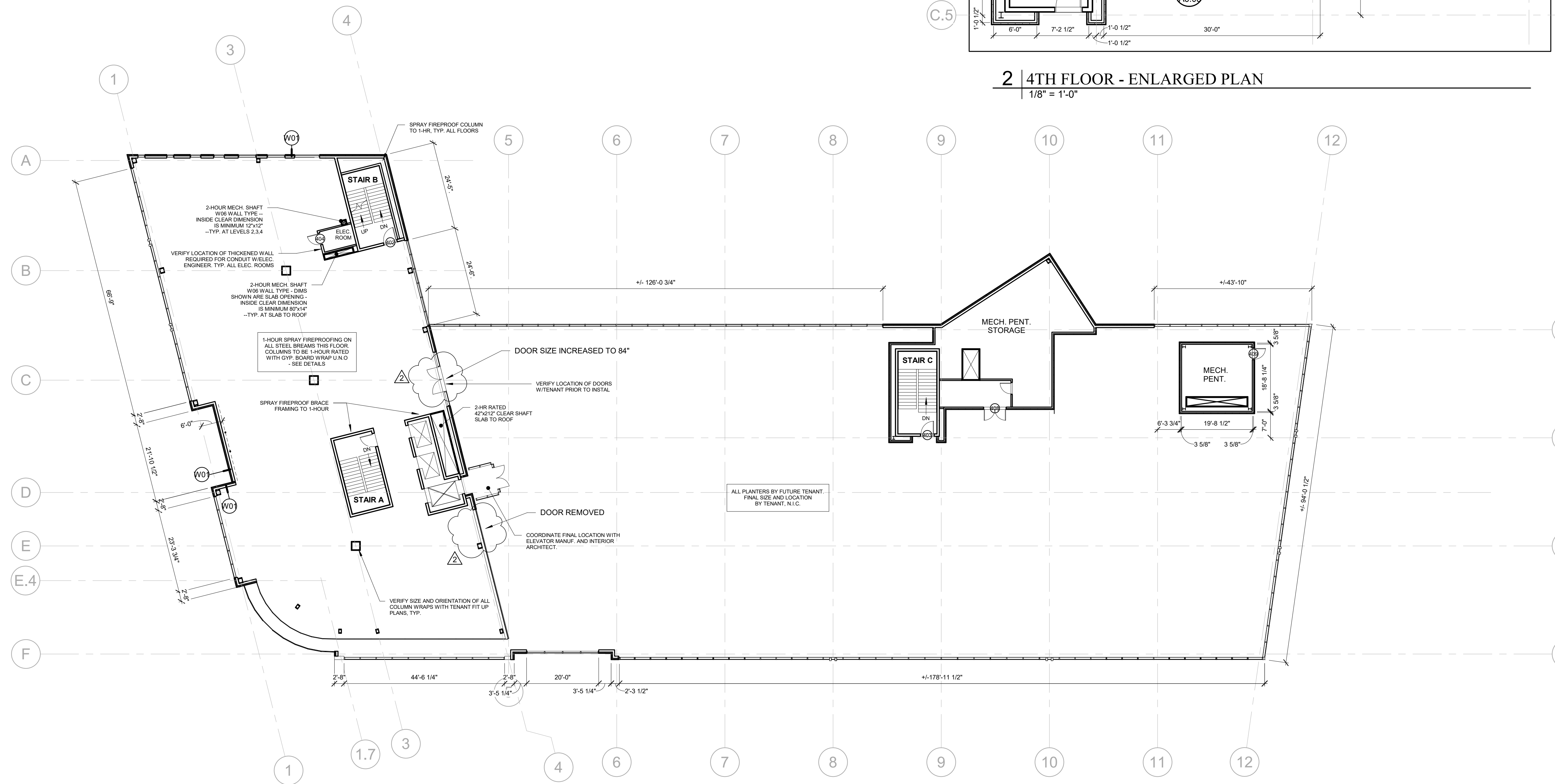
Architect:
ARCHETYPE
 architects
 48 Union Wharf Portland, Maine 04101
 (207) 772-6022 ARCHETYPE@ARCHETYPEPA.COM

Project:
 0 Hancock Street
 Portland, Maine

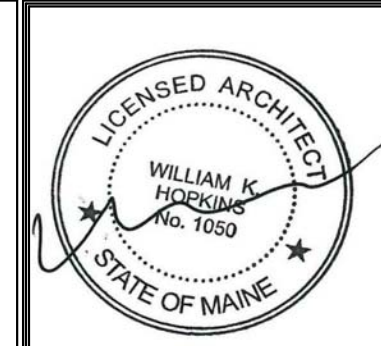
Revisions:	1	01/25/18	REVISIONS FOR PERMIT
	2	09/19/19	ISSUED FOR CONFORMANCE

Date:
 August 2017
 Scale:
 As indicated
 Life Safety Plan

LS1.2



2 | 4TH FLOOR - ENLARGED PLAN
1/8" = 1'-0"



Prepared For:
0 Hancock Street LLC
Address
City, State

Issued:
Issued For Construction - 11/15/2017
Issued For Permit - 10/23/2017

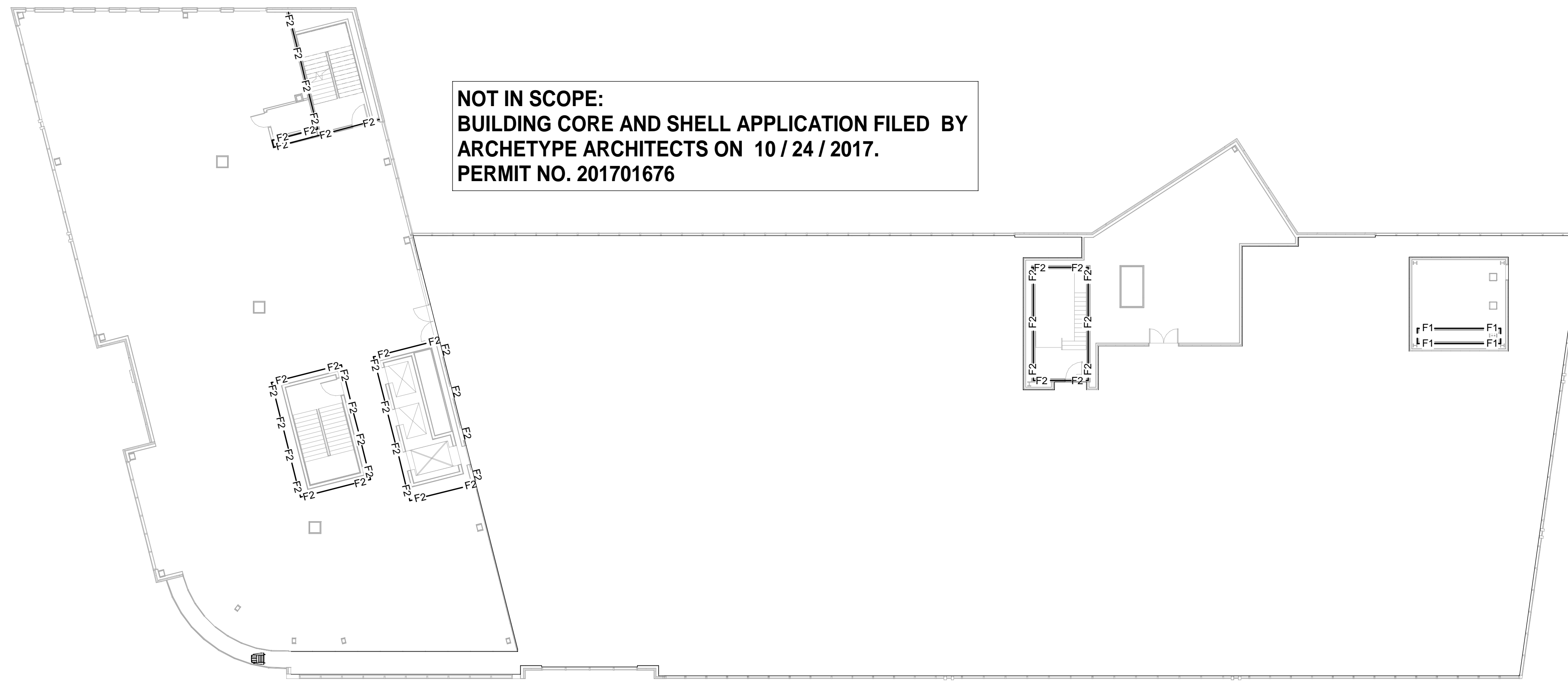
Architect:
ARCHETYPE architects
48 Union Wharf Portland, Maine 04101
(207) 772-6022 ARCHETYPE@ARCHETYPEPA.COM

Project:
0 Hancock Street
1 Hancock Street
Portland, Maine

Revisions:
2 09/19/19 ISSUED FOR CONFORMANCE

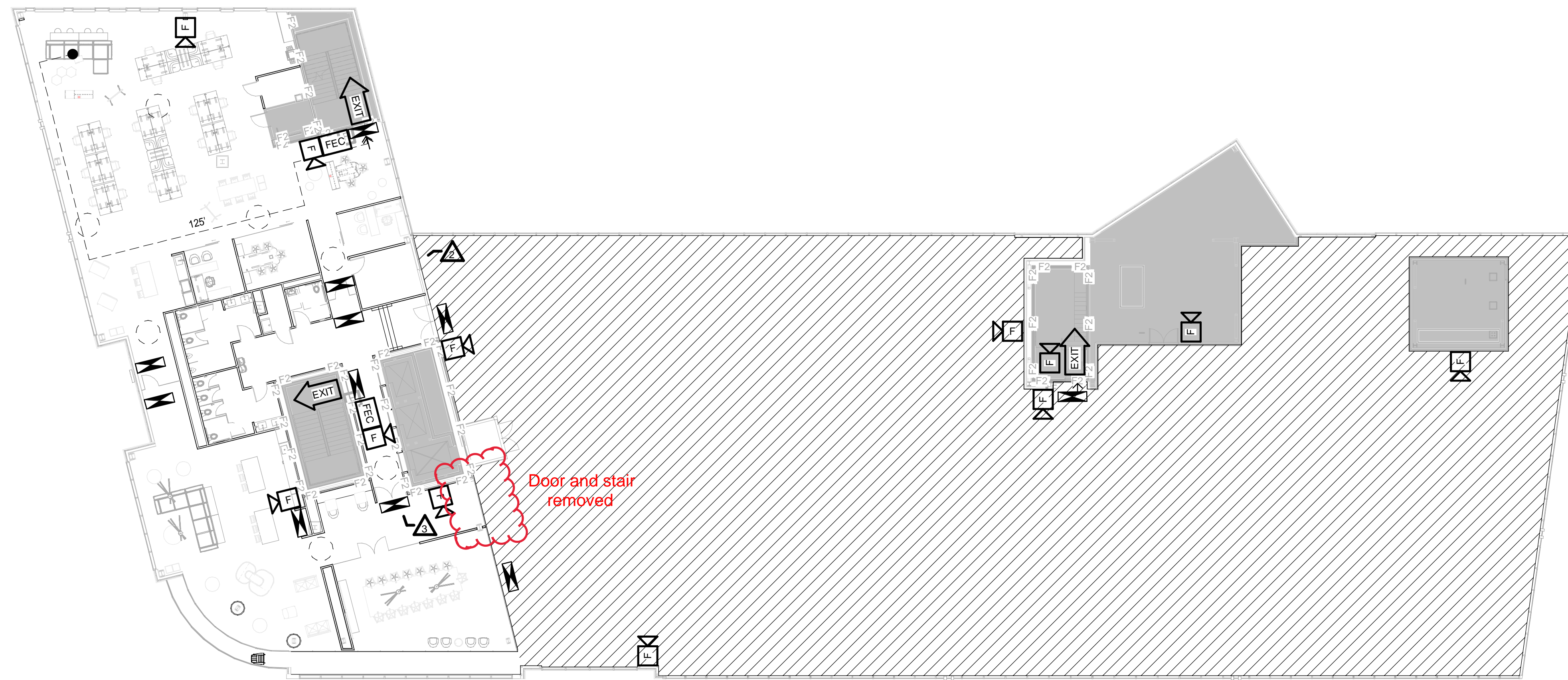
Date: August 2017
Scale: As indicated
Fourth Floor Plan

A1.03



NOT IN SCOPE:
BUILDING CORE AND SHELL APPLICATION FILED BY
ARCHETYPE ARCHITECTS ON 10 / 24 / 2017.
PERMIT NO. 201701676

4TH FLOOR PLAN - CORE & SHELL PLAN (H3)
1/16" = 1'-0"



Door and stair removed

4TH FLOOR PLAN - LIFE SAFETY - PROPOSED (B3)
1/16" = 1'-0"

LIFE SAFETY LEGEND

- H2 — 2 HOUR RATED HORIZONTAL EXIT & SMOKE BARRIER
- O2 — 2 HOUR RATED OCCUPANCY SEPARATION & SMOKE BARRIER
- F2 — 2 HOUR RATED FIRE BARRIER
- F1 — 1 HOUR RATED FIRE BARRIER
- S2 — 2 HOUR RATED SMOKE BARRIER
- S1 — 1 HOUR RATED SMOKE BARRIER
- S0 — SMOKE PARTITION
- EXIT DISCHARGE
- SMOKE CONTAINMENT BARRIER
- ★ STANDPIPE OR HOSE VALVE CABINET
- ⦿ FIRE DEPT. CONNECTION
- 177 — TRAVEL DISTANCE
- ⊠ FEC FIRE EXTINGUISHER CABINET
- ⊠ FE FIRE EXTINGUISHER WALL HUNG
- ➡ EXIT EGRESS DOOR
- ⊠ FIRE ALARM VISIBLE ONLY NOTIFICATION INDICATOR
- ⊠ FV FIRE ALARM AUDIBLE/VISIBLE NOTIFICATION INDICATOR
- ⊠ EXIT SIGN
- NOT IN SCOPE
- 5'-0" CLEARANCE
- ▨ ASSEMBLY OCCUPANCY
- ▩ DESIGNATED AREA OF REFUGE. AREA OF REFUGE PANEL REQUIRED, RE: FIRE ALARM PACKAGE.

REV	DESCRIPTION	DATE
3	SI - 25	10/15/18
2	SI - 17	08/27/18
1	SI - 4	05/31/18
0	ISSUE FOR CONSTRUCTION	8/1/2019

ISSUED FOR CONFORMANCE 09/19/19

CURRENT ISSUE STATUS:

SMRT Architects and Engineers
144 Fore Street/P.O. Box 618
Portland, Maine 04104

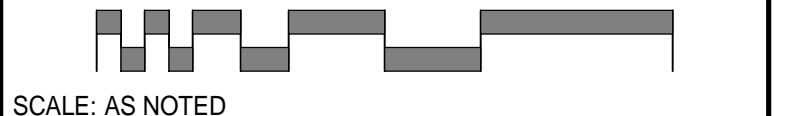
ARCHITECTURE | ENGINEERING | PLANNING | INTERIORS | ENERGY **SMRT**

WEX
CORPORATE HEADQUARTERS

PORTLAND, ME

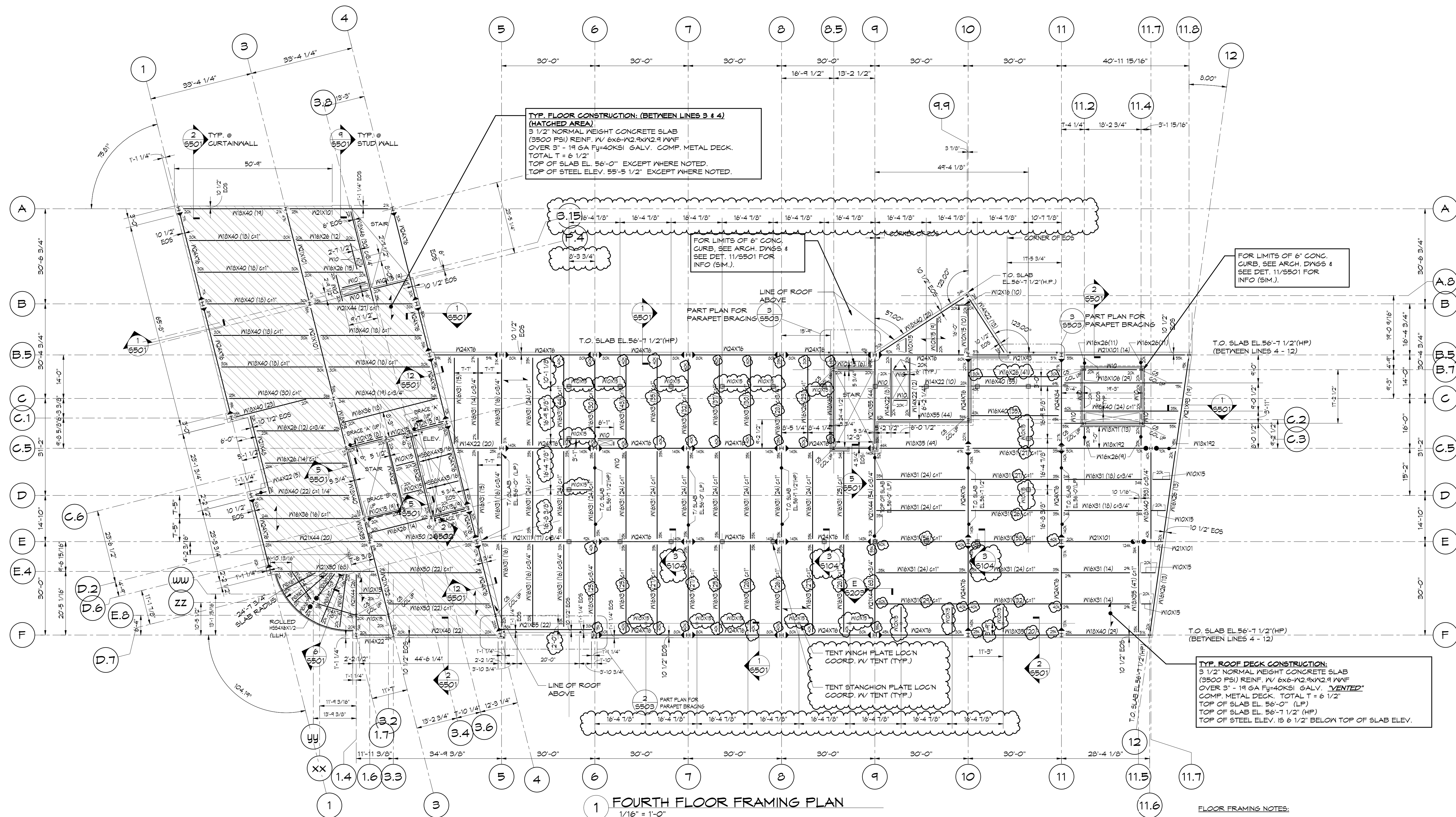
LEVEL FOUR LIFE SAFETY PLAN

SHEET TITLE:



SCALE: AS NOTED

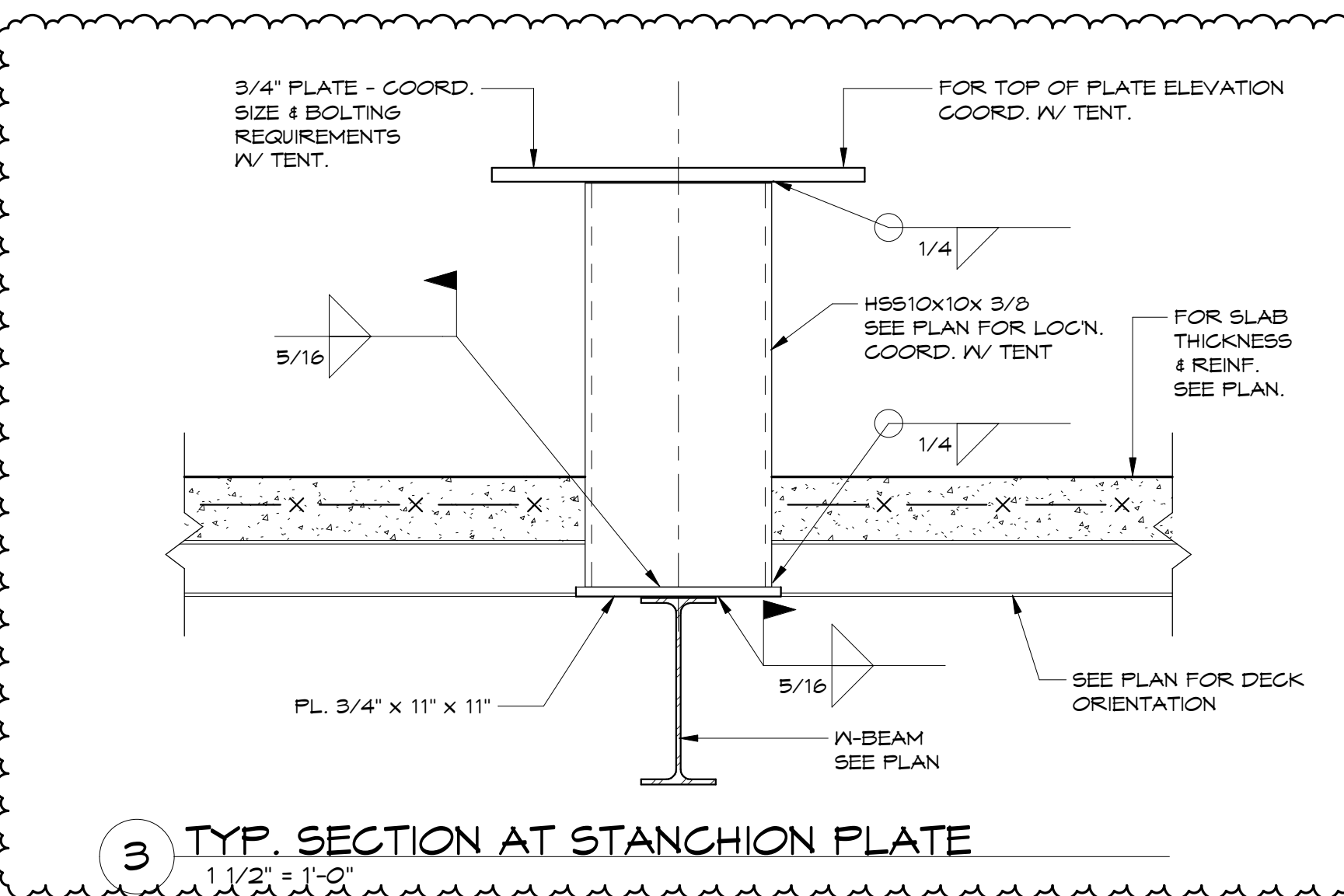
PROJECT MANAGER:	GWV	PROJECT NO.:	19112
A/E OF RECORD:	GWV		
JOB CAPTAIN:	CBM		
DRAWN BY:	CBM		
SMRT FILE:	A-004-19112	SHEET NO.:	A-004



TYP. FLOOR CONSTRUCTION: (BETWEEN LINES 3 & 4)
(HATCHED AREA)
 3 1/2" NORMAL WEIGHT CONCRETE SLAB
 (3500 P.S.I.) REINF. W/ 6x6-M2-9x12-9 W/F
 OVER 3" - 19 GA Fy=40KSI GALV. COMP. METAL DECK.
 TOTAL T = 6 1/2"
 TOP OF SLAB EL. 56'-0" EXCEPT WHERE NOTED.
 TOP OF STEEL ELEV. 55'-5 1/2" EXCEPT WHERE NOTED.

TYP. ROOF DECK CONSTRUCTION:
 3 1/2" NORMAL WEIGHT CONCRETE SLAB
 (3500 P.S.I.) REINF. W/ 6x6-M2-9x12-9 W/F
 OVER 3" - 19 GA Fy=40KSI GALV. "VENTED"
 COMP. METAL DECK. TOTAL T = 6 1/2"
 TOP OF SLAB EL. 56'-0" (LP)
 TOP OF SLAB EL. 56'-1 1/2" (HP)
 TOP OF STEEL ELEV. IS 6 1/2" BELOW TOP OF SLAB ELEV.

1 FOURTH FLOOR FRAMING PLAN
 1/16" = 1'-0"



3 TYP. SECTION AT STANCHION PLATE
 1/16" = 1'-0"

- FLOOR FRAMING NOTES:**
- FOR TYPICAL DETAILS AND GENERAL NOTES SEE DRAWINGS S201 THRU S205.
 - TOP OF SLAB ELEVATION VARIES. SEE PLAN. TOP OF STEEL SHALL BE 6 1/2" BELOW TOP OF SLAB UNLESS NOTED OTHERWISE.
 - (± 0") INDICATES DEVIATION FROM TOP OF STEEL ELEVATION.
 - "C." INDICATES COLUMN MARK. FOR COLUMN AND BASE PLATE SIZES SEE COLUMN SCHEDULE DRAWING S301.
 - "X" INDICATES THE NUMBER OF EQUALLY SPACED 3/4" DIA. x 4 1/2" LONG HEADED SHEAR STUDS.
 - "EOS" INDICATES EDGE OF FOUR STOP AND / OR EDGE OF DECK DIMENSION FROM COLUMN GRIDLINE OR CL. OF BEAM IF NO COLUMN GRIDLINE. COORDINATE ALL EOS DIMENSIONS WITH ARCH. DWGS.
 - USE CHAIRS SPACED AT 4'-0" O.C. TO SUPPORT #4 BARS TO PROVIDE 1" CLEAR COVER.
 - "4R" INDICATES CONNECTION DESIGN SHEAR (ASD). IF REACTION IS NOT SHOWN, REFER TO SPECIFICATIONS & GENERAL NOTES.
 - "G." INDICATES GRAVITY MOMENT CONNECTION. FOR DETAILS SEE DRAWING S204.
 - "BRACE X" INDICATES A BRACED FRAME. SEE DRAWING S303 & S304. FOR BRACE ELEVATIONS AND DETAILS.
 - "TOC EL." INDICATES TOP OF CONCRETE SLAB ELEVATION.
 - "TOS EL." INDICATES TOP OF STEEL ELEVATION.
 - "BOS EL." INDICATES BOTTOM OF STEEL ELEVATION.
 - INDICATES SPAN OF METAL DECK.
 - INDICATES SEISMIC MOMENT CONNECTION. FOR DETAILS SEE DRAWING S204.
 - "W10" INDICATES W10x12 STEEL BEAM.
 - PROVIDE 5/8" DIA. PUDDLE WELD @ 36/4 PATTERN AT ROOF DECK. PROVIDE 3/8" DIA. PUDDLE WELDS @ 36/4 PATTERN AT FLOOR DECK. PROVIDE #10 SCREWS @ 18" O.C. AT SIDELAPS (ALL LEVELS).

Prepared For:
0 Hancock Street LLC

Consulting Engineer:
VEIT & SVEITAS
 engineers

Architect:
ARCHETYPE
 architects

Project:
0 HANCOCK STREET

Revisions:
 10-29-17 For Construction
 11-10-17 Bulletin 2
 11-15-17 Issued for Construction
 12-08-17 Bulletin 3
 01-08-18 Bulletin 5
 04-11-18 Bulletin 10

Date: 08/11/17
 Scale: As Indicated
Fourth Floor Framing Plan

S104

FLOOR CONSTRUCTION (CROSS-HATCHED AREA):
 6 1/2" NORMAL WEIGHT CONCRETE SLAB (3500 PSI)
 REINF. W/ 6x6-W2.1xW2.1 WVF OVER 3"
 - 16 GA Fy=40KSI GALV. COMP. METAL DECK.
 TOTAL T = 9 1/2"
 TOP OF SLAB EL. 10'-1 1/2" EXCEPT WHERE NOTED.
 TOP OF STEEL EL. 6'-9"-10" EXCEPT WHERE NOTED.

ROOF/FLOOR CONSTRUCTION:
 3 1/2" NORMAL WEIGHT CONCRETE SLAB (3500 PSI)
 REINF. W/ 6x6-W2.1xW2.1 WVF OVER 3"
 - 16 GA Fy=40KSI GALV. COMP. METAL DECK.
 TOTAL T = 6 1/2"
 TOP OF SLAB EL. 10'-4 1/2" EXCEPT WHERE NOTED.
 TOP OF STEEL EL. 6'-9"-10" EXCEPT WHERE NOTED.

FOR FRAMING AND INFORMATION IN THIS AREA, SEE DRAWING S105A

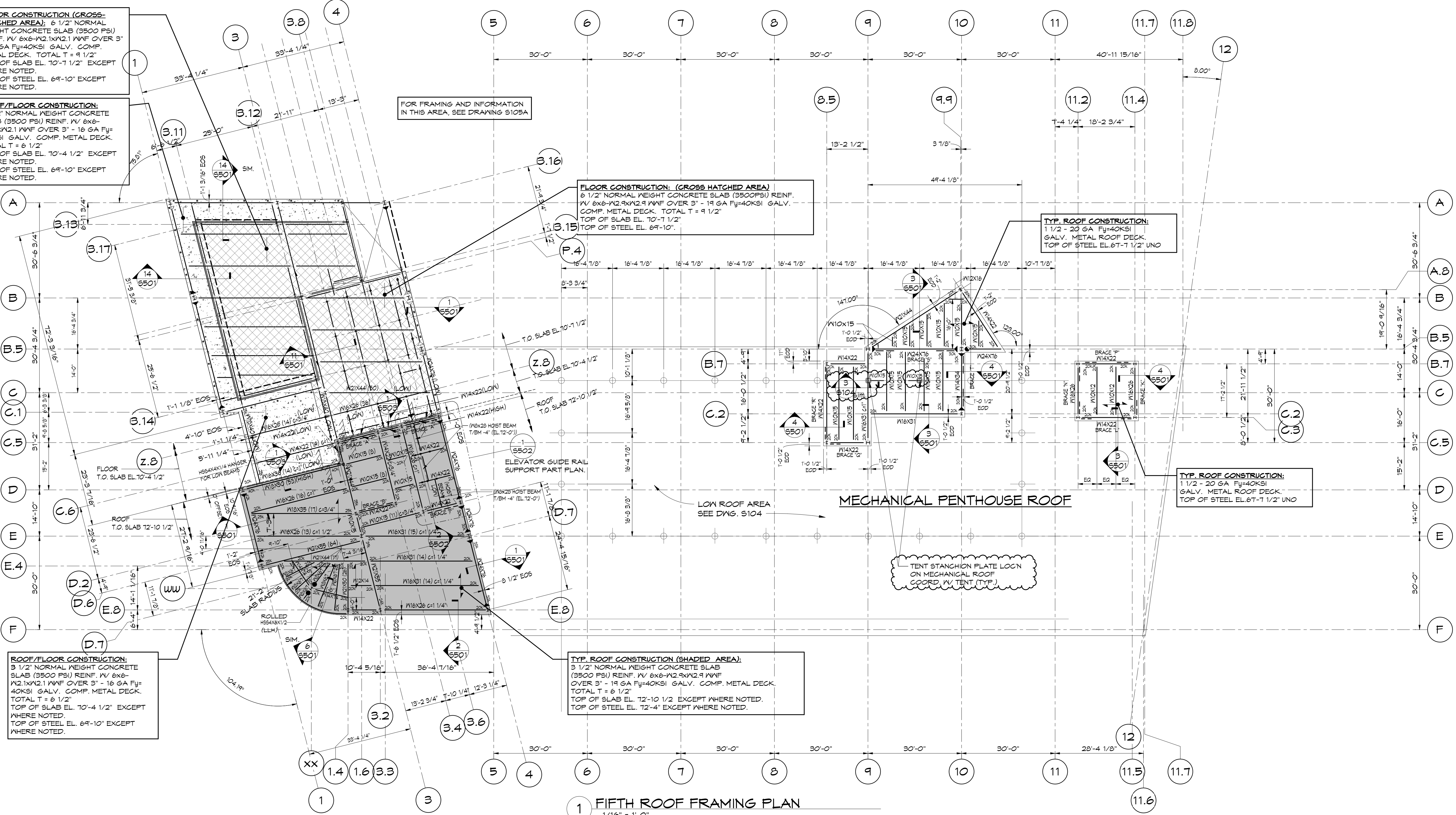
FLOOR CONSTRUCTION (CROSS HATCHED AREA)
 6 1/2" NORMAL WEIGHT CONCRETE SLAB (3500PSI) REINF. W/ 6x6-W2.1xW2.1 WVF OVER 3" - 16 GA Fy=40KSI GALV. COMP. METAL DECK. TOTAL T = 9 1/2"
 TOP OF SLAB EL. 10'-1 1/2"
 TOP OF STEEL EL. 6'-9"-10"

TYP. ROOF CONSTRUCTION:
 1 1/2" - 20 GA Fy=40KSI GALV. METAL ROOF DECK.
 TOP OF STEEL EL. 6'-1 1/2" UNO

TYP. ROOF CONSTRUCTION:
 1 1/2" - 20 GA Fy=40KSI GALV. METAL ROOF DECK.
 TOP OF STEEL EL. 6'-1 1/2" UNO

TYP. ROOF CONSTRUCTION (SHADED AREA):
 3 1/2" NORMAL WEIGHT CONCRETE SLAB (3500 PSI) REINF. W/ 6x6-W2.1xW2.1 WVF OVER 3" - 16 GA Fy=40KSI GALV. COMP. METAL DECK. TOTAL T = 6 1/2"
 TOP OF SLAB EL. 12'-10 1/2" EXCEPT WHERE NOTED.
 TOP OF STEEL EL. 12'-4" EXCEPT WHERE NOTED.

ROOF/FLOOR CONSTRUCTION:
 3 1/2" NORMAL WEIGHT CONCRETE SLAB (3500 PSI) REINF. W/ 6x6-W2.1xW2.1 WVF OVER 3" - 16 GA Fy=40KSI GALV. COMP. METAL DECK. TOTAL T = 6 1/2"
 TOP OF SLAB EL. 10'-4 1/2" EXCEPT WHERE NOTED.
 TOP OF STEEL EL. 6'-9"-10" EXCEPT WHERE NOTED.



1 FIFTH ROOF FRAMING PLAN
 1/16" = 1'-0"

- FLOOR FRAMING NOTES:**
- FOR TYPICAL DETAILS AND GENERAL NOTES SEE DWGS. S201 THRU S205.
 - TOP OF SLAB ELEVATION VARIES. SEE PLAN.
TOP OF STEEL ELEVATION VARIES, SEE PLAN.
 - (± 0') INDICATES DEVIATION FROM TOP OF STEEL ELEVATION.
 - "C..." INDICATES COLUMN MARK. FOR COLUMN AND BASE PLATE SIZES SEE COLUMN SCHEDULE DRAWING S301.
 - "(X)" INDICATES THE NUMBER OF EQUALLY SPACED 3/4" DIA. X 4 1/2" LONG HEADED SHEAR STUDS.
 - "EOS" INDICATES EDGE OF FOUR STOP AND / OR EDGE OF DECK DIMENSION FROM COLUMN GRIDLINE OR CL. OF BEAM IF NO COLUMN GRIDLINE. COORDINATE ALL EOS DIMENSIONS WITH ARCH. DWGS.
 - USE CHAIRS SPACED AT 4'-0" O.C. TO SUPPORT #4 BARS TO PROVIDE 1" CLEAR COVER.
 - "49K" INDICATES CONNECTION DESIGN SHEAR (ASD). IF REACTION IS NOT SHOWN, REFER TO SPECIFICATIONS & GENERAL NOTES.
 - "G..." INDICATES AMOUNT OF CAMBER.
 - INDICATES GRAVITY MOMENT CONNECTION. FOR DETAILS SEE DRAWING S204.
 - "BRACE X" INDICATES A BRACED FRAME. SEE DRAWINGS S303 & S304, FOR BRACE ELEVATIONS AND DETAILS.
 - "TOC EL." INDICATES TOP OF CONCRETE SLAB ELEVATION.
 - "TOS EL." INDICATES TOP OF STEEL ELEVATION.
 - "BOS EL." INDICATES BOTTOM OF STEEL ELEVATION.
 - ← INDICATES SPAN OF METAL DECK.
 - INDICATES SEISMIC MOMENT CONNECTION. FOR DETAILS SEE DRAWING S204.
 - "W10" INDICATES W10x12 STEEL BEAM.
 - PROVIDE 5/8" DIA. PUDDLE WELD @ 36/1 PATTERN AT ROOF DECK. PROVIDE 5/8" DIA. PUDDLE WELDS @ 36/4 PATTERN AT FLOOR DECK. PROVIDE #10 SCREWS @ 18" O.C. AT SIDELAPS (ALL LEVELS).

Prepared For: **0 Hancock Street LLC**

Consulting Engineer: **VEITAS SVEITAS engineers**
 680 Granite Street, Suite 101
 Portland, Maine 04101
 TEL: (207) 772-6022 FAX: (207) 772-6025

Architect: **ARCHETYPE architects**
 48 Union Wharf Portland, Maine 04101
 (207) 772-6022 Fax: (207) 772-4056

Project: **0 HANCOCK STREET PORTLAND, MAINE**

Revisions:

10-29-17	For Construction
11-10-17	Bulletin 2
11-15-17	Issued for Construction
12-08-17	Bulletin 3
01-08-18	Bulletin 5
04-11-18	Bulletin 10

Date: **08/11/17**

Scale: **As Indicated**

Fifth Floor - Roof Framing Plan