

Prepared For:  
**0 Hancock Street  
LLC**

Consultant:  
**ENVELOPE**  
ARCHITECTURE & CONSULTING  
BUILDING ENVELOPE DESIGN  
COMMERCIAL • RESIDENTIAL • INDUSTRIAL • ME  
207-807-6661

Architect:  
**ARCHETYPE**  
architects  
48 Union Wharf Portland, Maine 04101  
(207) 775-6022 ARCHETYPE@ARCHETYPEPA.COM

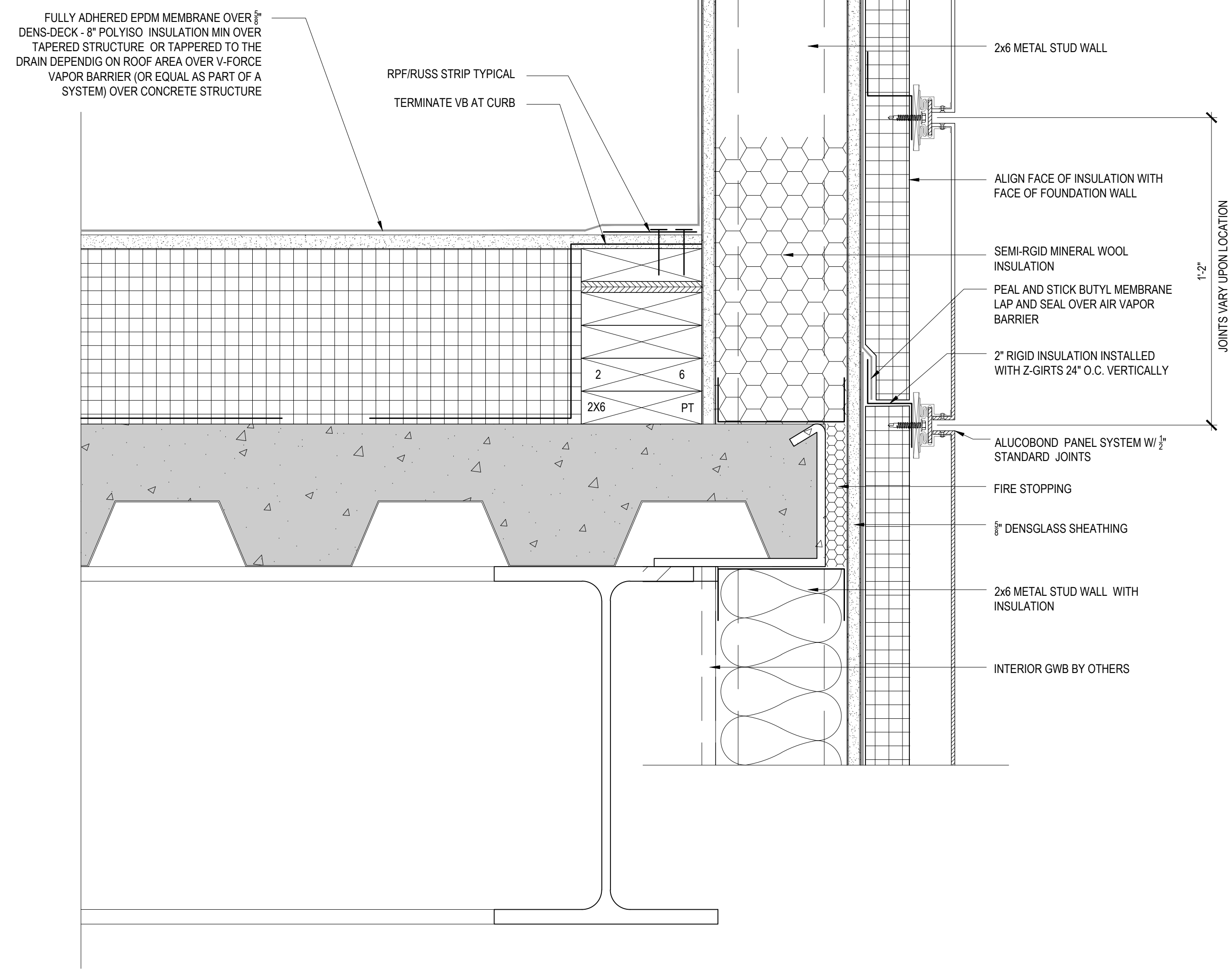
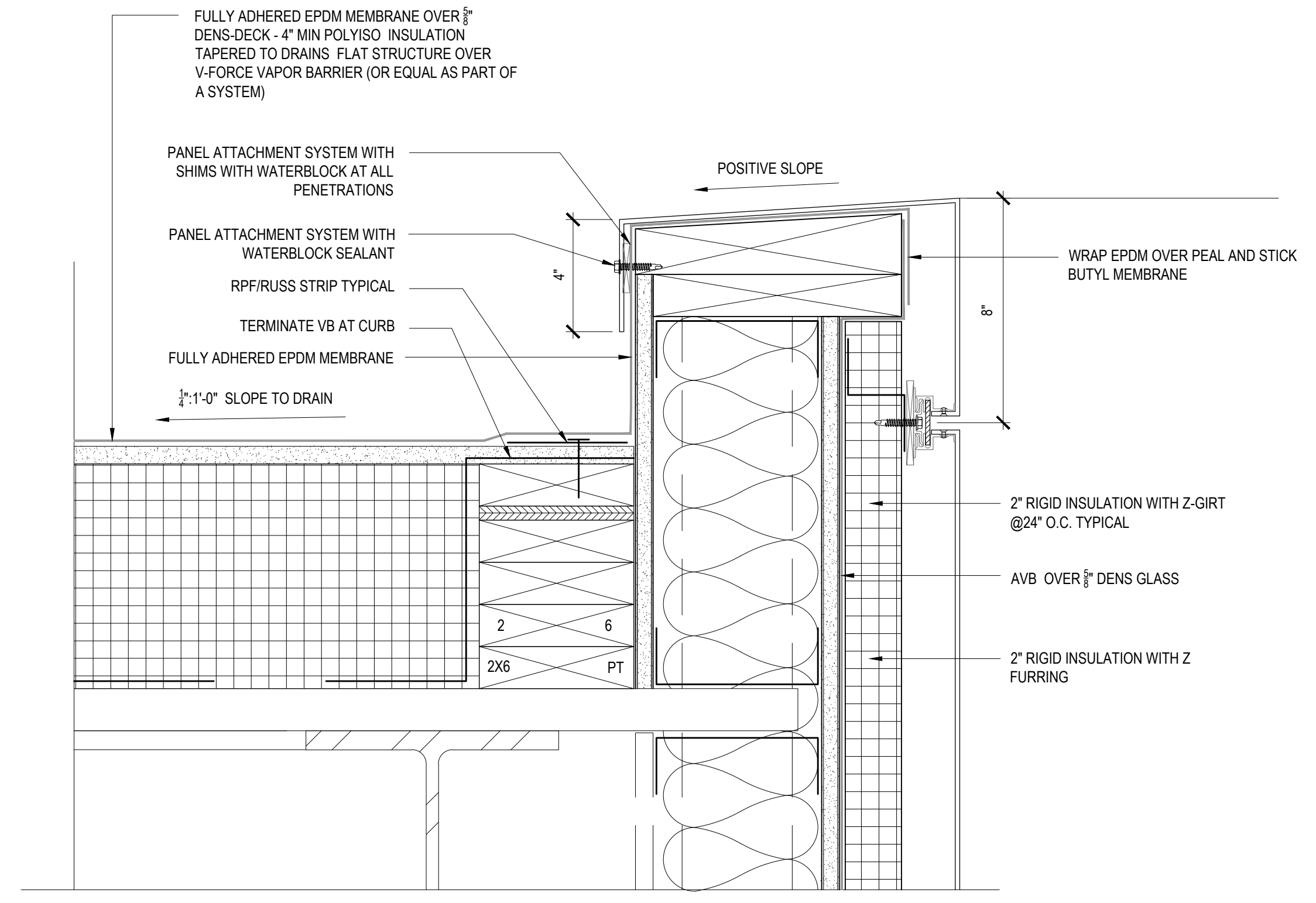
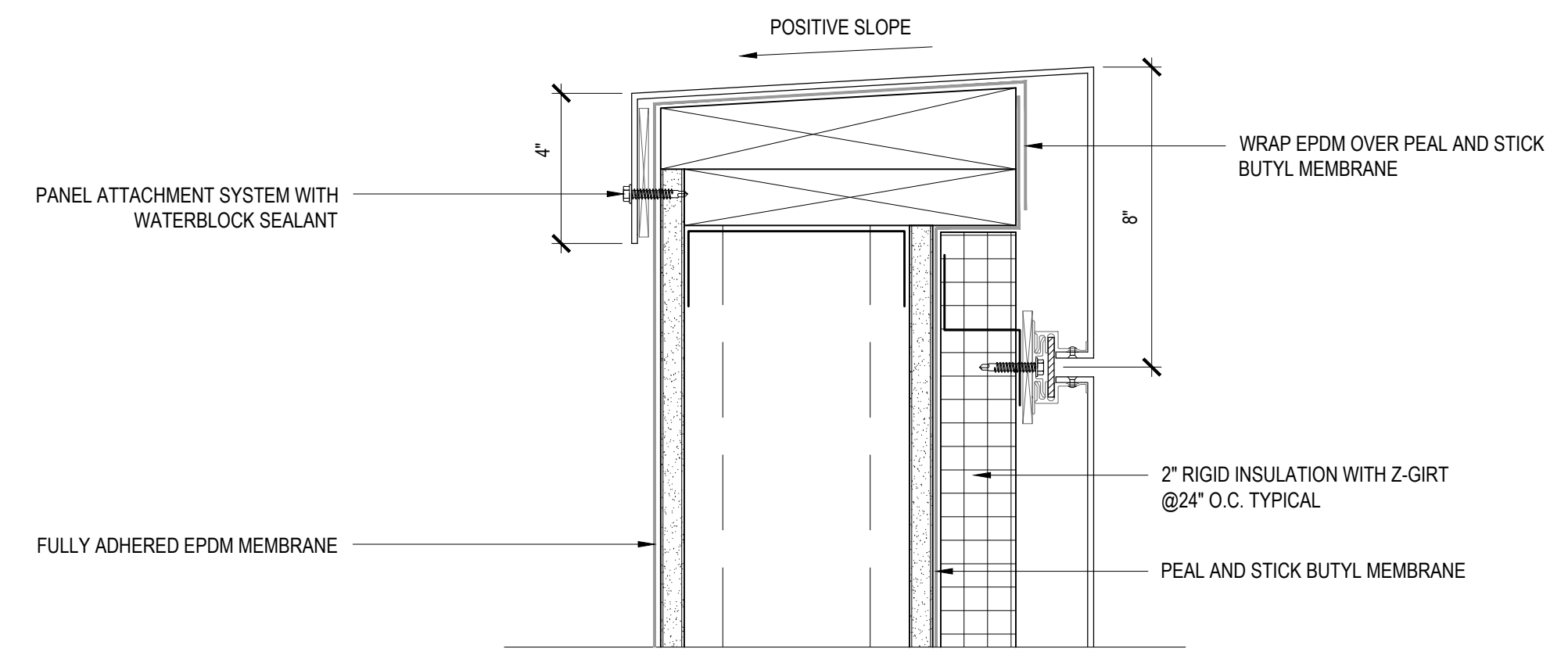
Project:  
**WEX  
BUILDING**  
1 Hancock St. Portland Maine

Revisions:  
Issued for Permit

Date: **OCT 23, 2017**  
Scale: **As indicated**

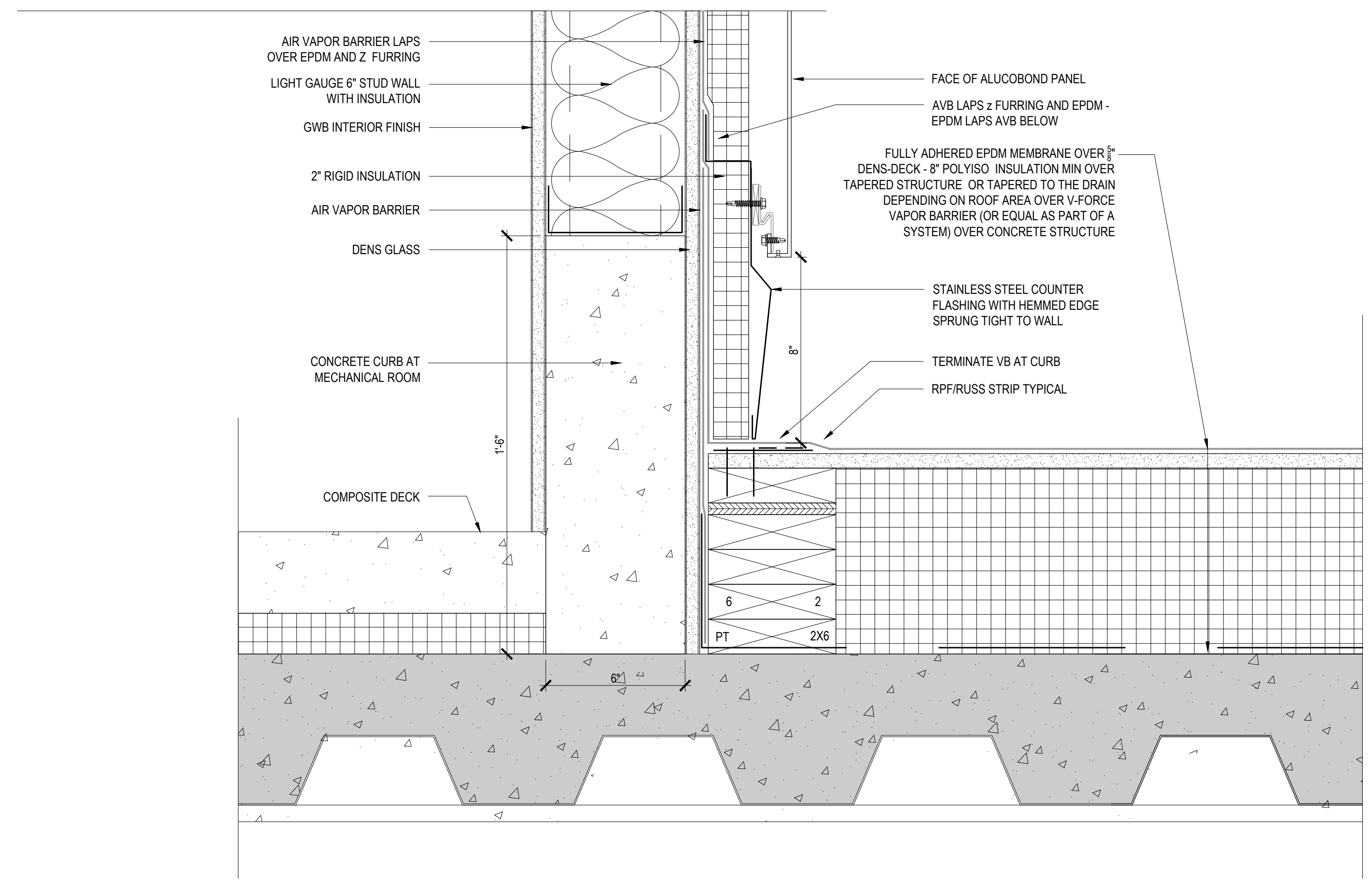
**DETAILS**

**A5.12**



**3** ROOF EDGE - ALUCOBOND  
WALL DETAIL

SCALE: 3"=1'-0"



**1** 5TH FLOOR MECHANICAL ROOM BASE OF WALL  
WALL DETAIL

SCALE: 3"=1'-0"

**2** PARAPET WALL - ALUCOBOND

SCALE: 6"=1'-0"