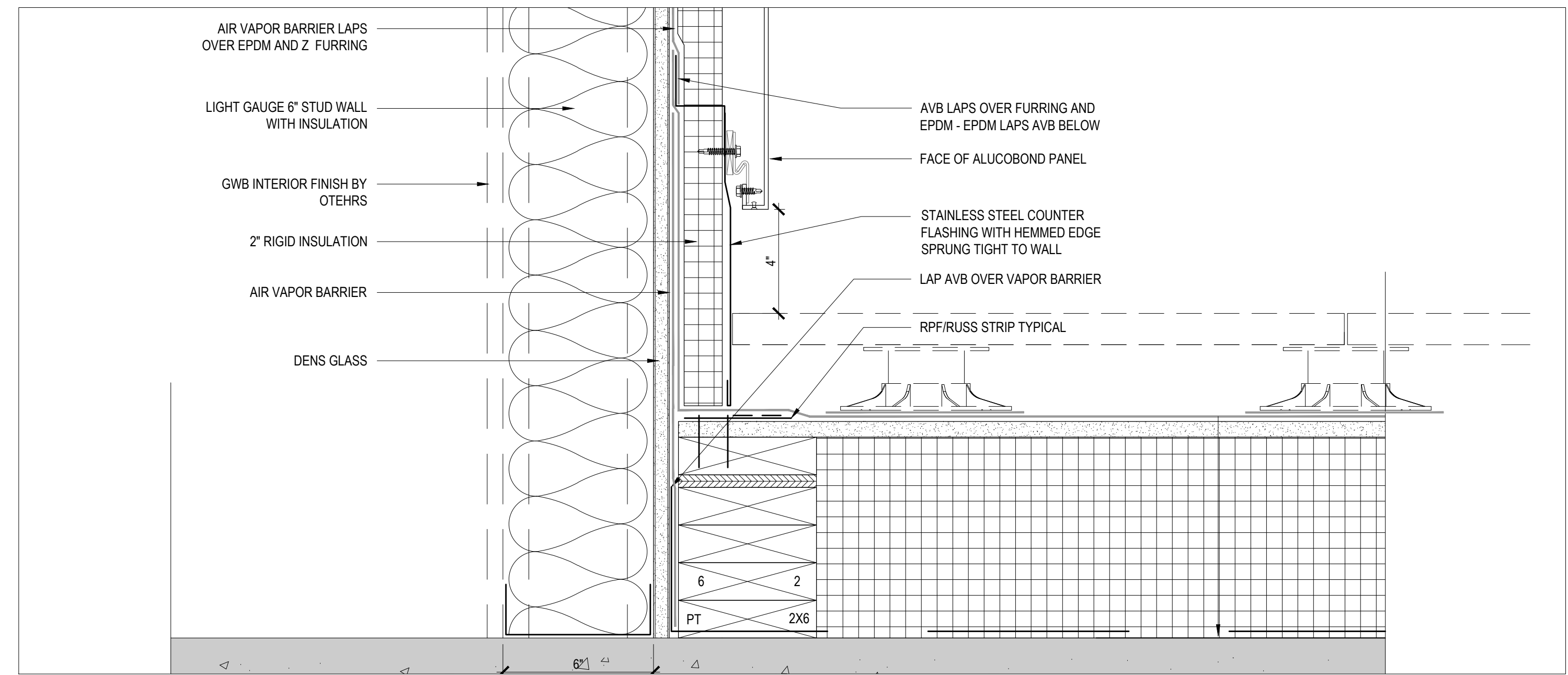


DETAIL NOT USED



3

WALL DETAIL

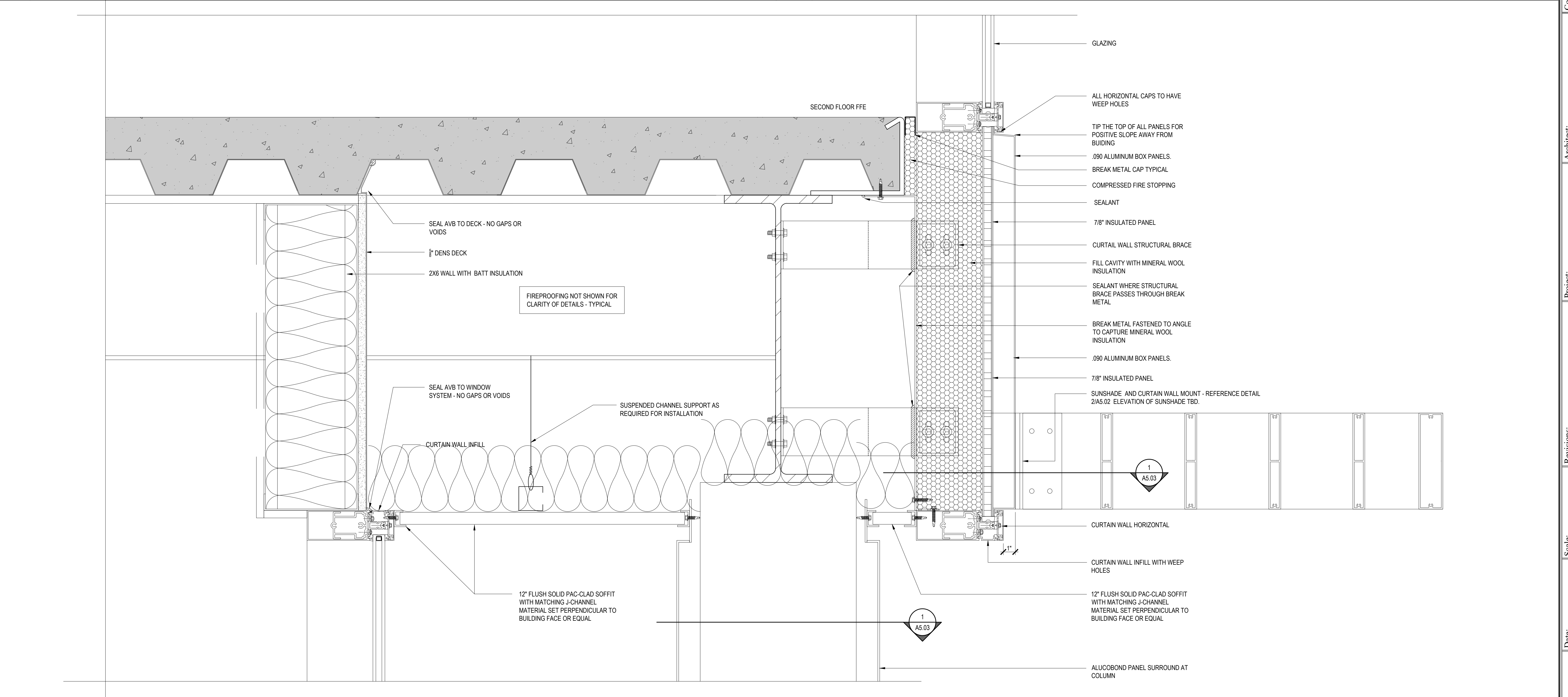
SCALE: 3"=1'-0"

2

WALL BASE AT ALUCOBOND

WALL DETAIL

SCALE: 3"=1'-0"

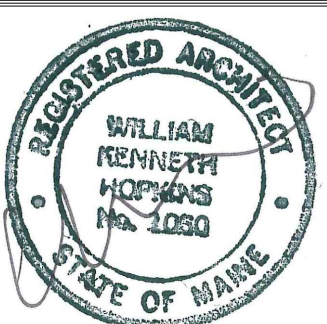


1

FIRST FLOOR SOFFIT DETAIL

WALL DETAIL

SCALE: 3"=1'-0"



Prepared For:
0 Hancock Street
LLC

Consultant:
ENVELOPE
ARCHITECTURE & CONSULTING
BUILDING ENVELOPE DESIGN
COMMERCIALS • WINDTIGHT, INC.
207-807-6661

Architect:
ARCHETYPE
architects
48 Union Wharf Portland, Maine 04101
(207) 775-6022 ARCHETYPE@ARCHETYPEPA.COM

Project:
WEX
BUILDING
1 Hancock St. Portland Maine

Revisions:
Issued for Permit

Date: OCT 23, 2017
Scale: As indicated

DETAILS

A5.09