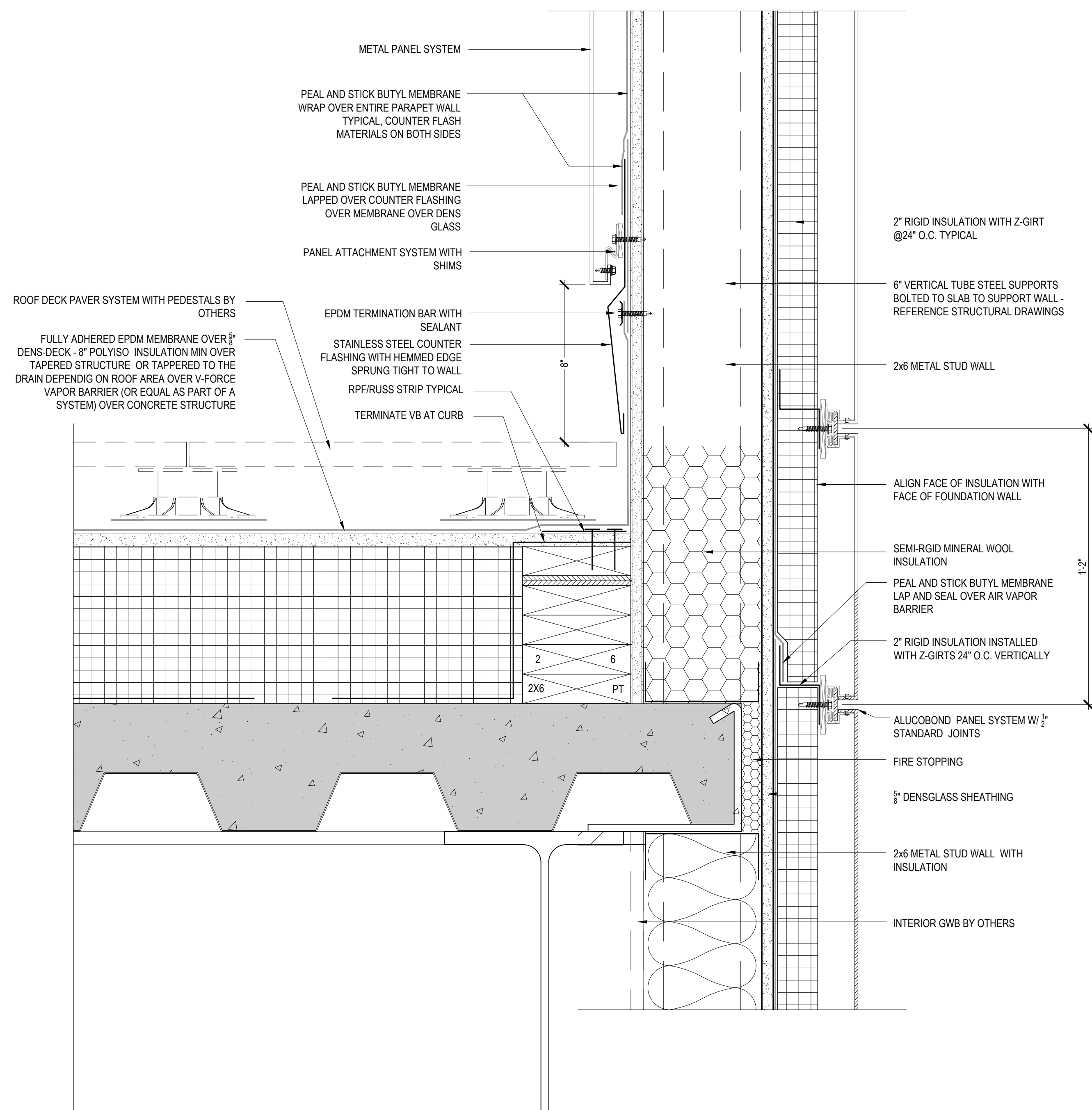


**5** GUARD RAIL TOP DETAIL - ALUCOBOND

WALL DETAIL

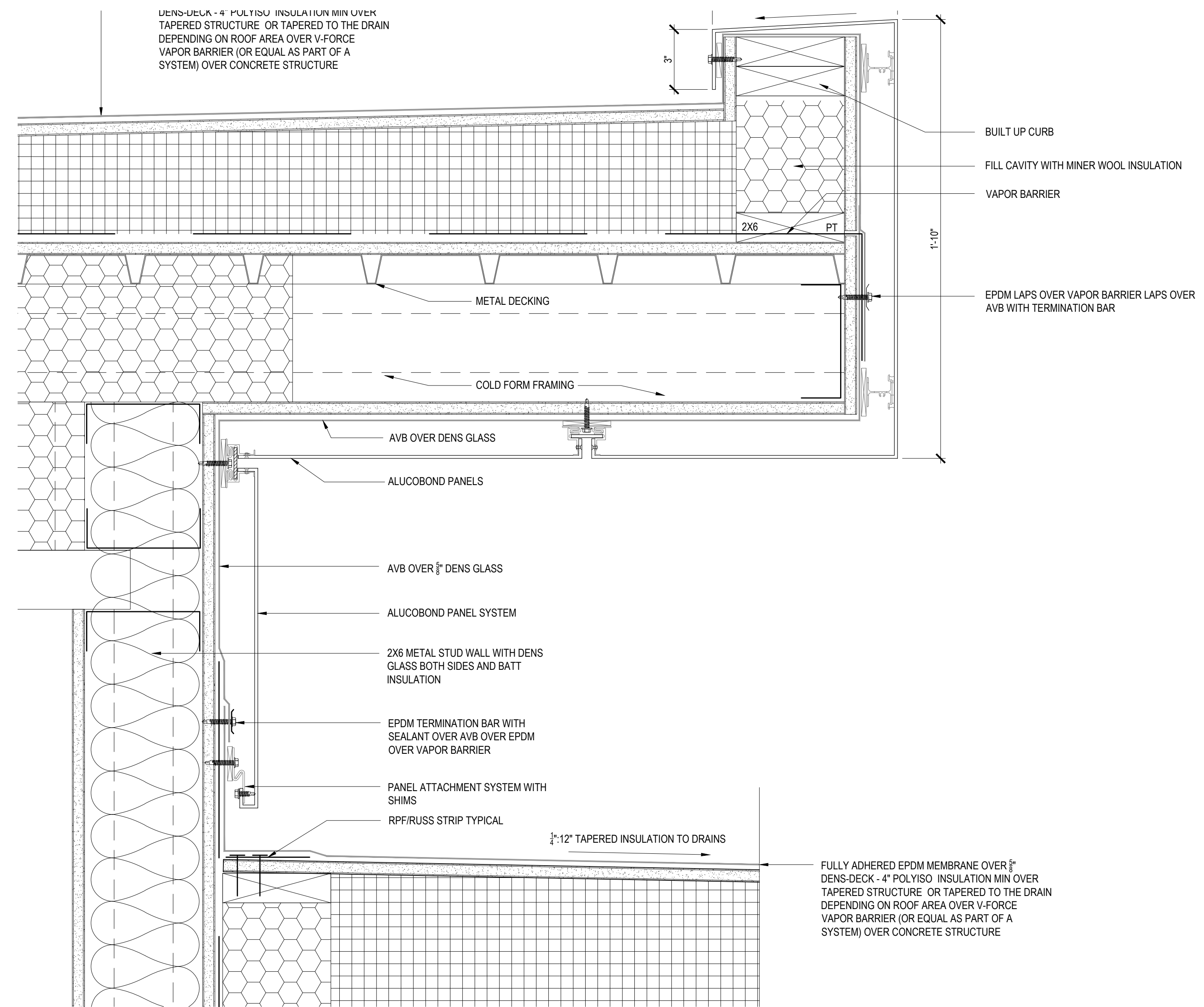
SCALE: 3"=1'-0"



**3** ROOF DECK DETAIL - ALUCOBOND

WALL DETAIL - ROOF DETAILS

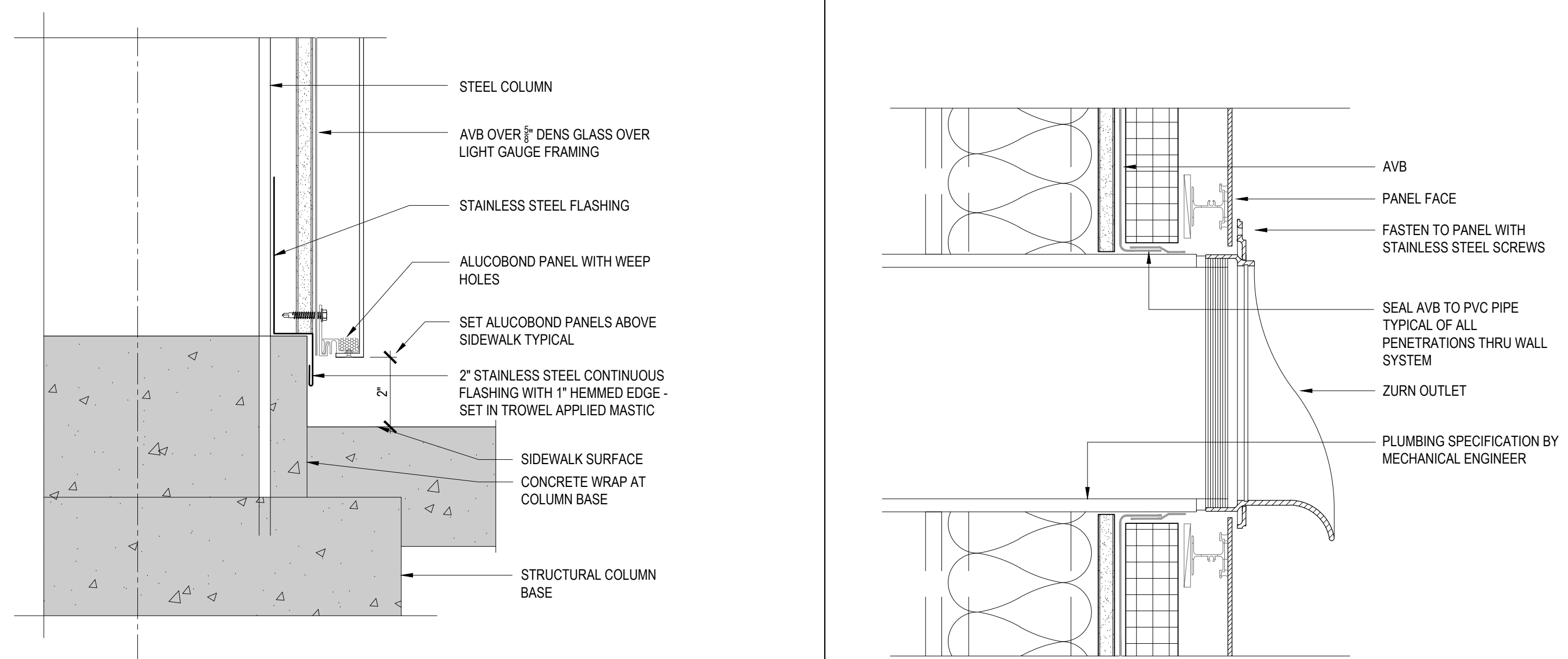
SCALE: 3"=1'-0"



**4** ALUCOBOND TO ROOF DETAIL

WALL DETAIL

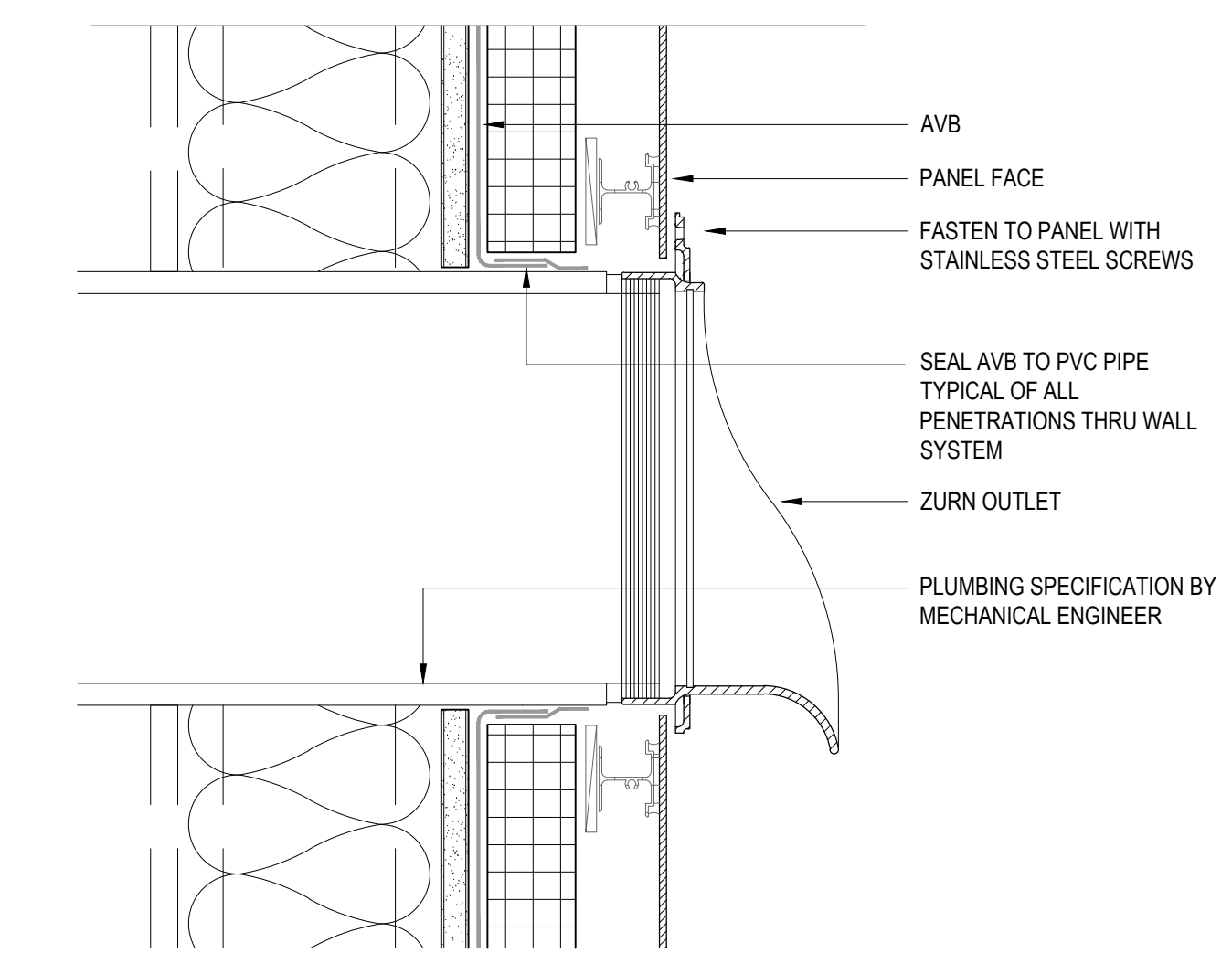
SCALE: 3"=1'-0"



**2** COLUMN BASE TYPICAL

WALL DETAIL

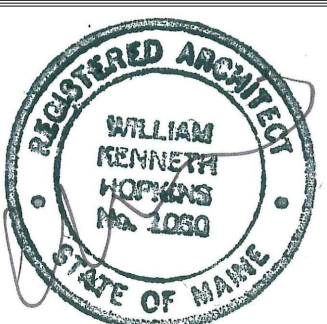
SCALE: 3"=1'-0"



**1** OVERFLOW OUTLET SET IN ALUCOBOND PANEL

WALL DETAIL

SCALE: 3"=1'-0"



Prepared For:  
**0 Hancock Street  
LLC**

Consultant:  
**ENVELOPE**  
ARCHITECTURE & CONSULTING  
BUILDING ENVELOPE DESIGN  
COMMERCIALS • WINDHAIN, ME  
207-807-6661

Architect:  
**ARCHETYPE**  
architects  
48 Union Wharf Portland, Maine 04101  
(207) 775-6022 ARCHETYPE@ARCHETYPEPA.COM

Project:  
**WEX  
BUILDING**  
1 Hancock St. Portland Maine

Revisions:  
Issued for Permit

Scale:  
As indicated

Date:  
OCT 23, 2017

**DETAILS**

**A5.08**