

Prepared For:
**0 Hancock Street
 LLC**

Consultant:
ENVELOPE
 ARCHITECTURE & CONSULTING
 BUILDING ENVELOPE DESIGN
 CONSULTANTS • WINDHAM, ME
 207-807-6661

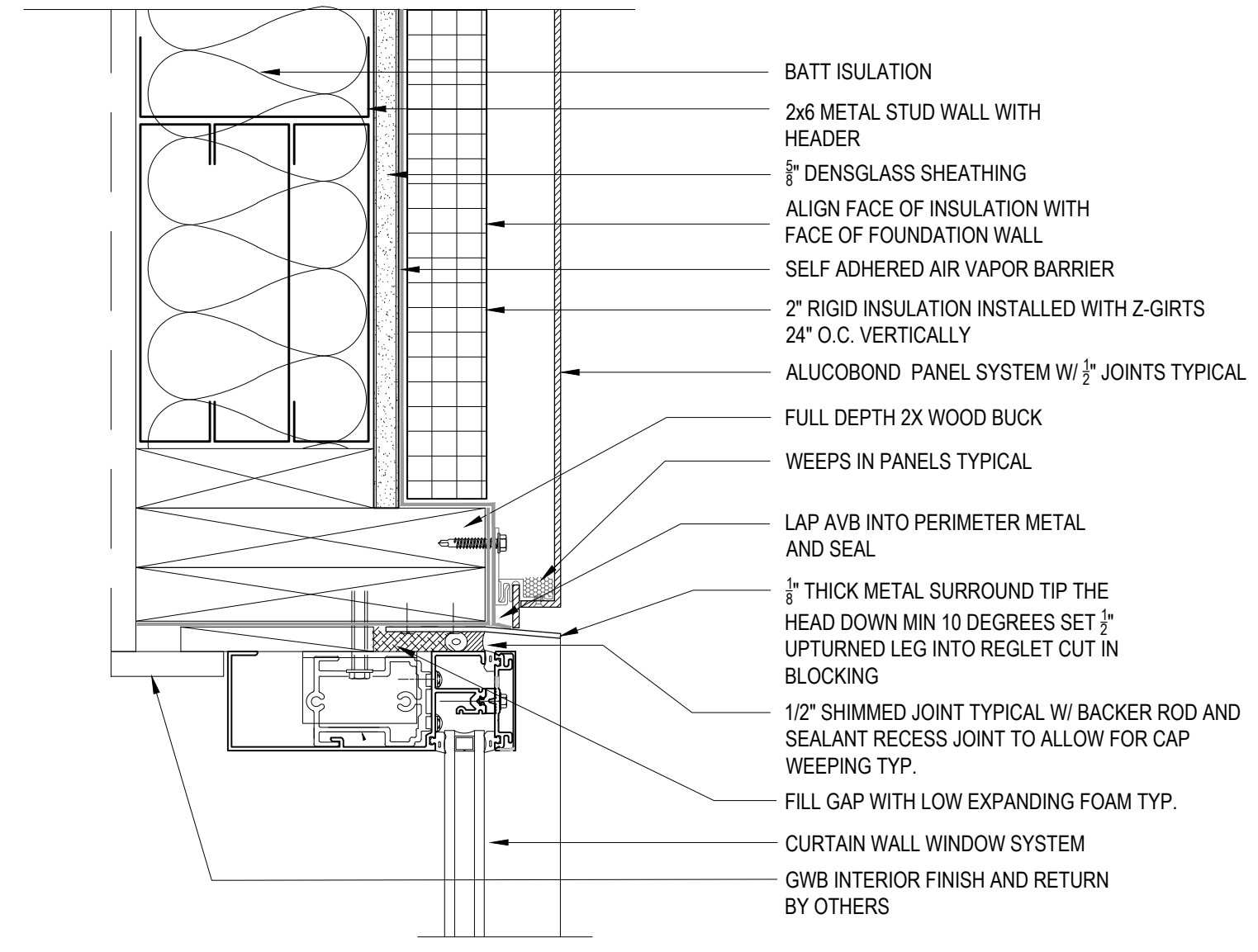
Architect:
ARCHETYPE
 architects
 48 Union Wharf Portland, Maine 04101
 (207) 773-6022 ARCHETYPE@ARCHETYPEPA.COM

Project:
**WEX
 BUILDING**
 1 Hancock St. Portland Maine

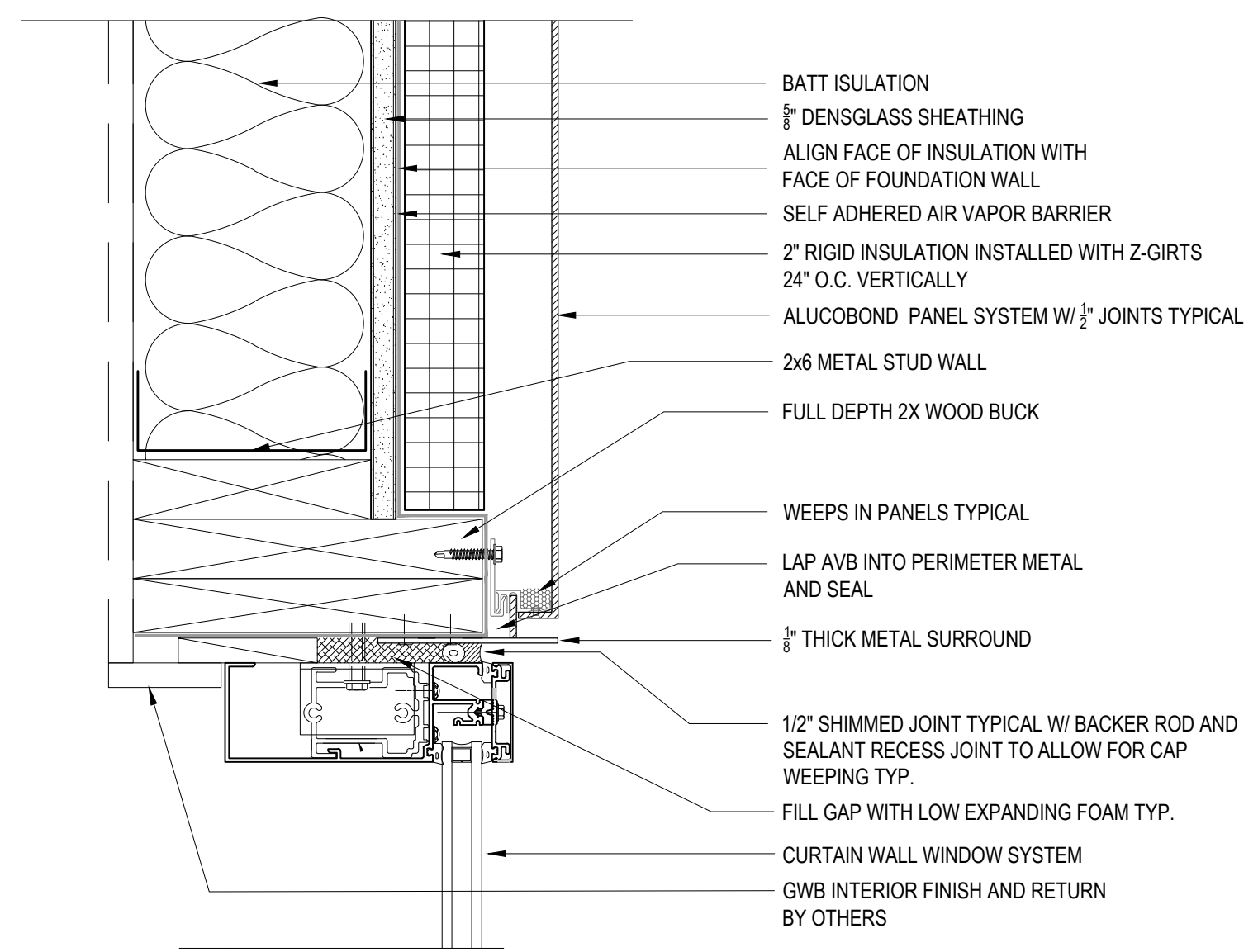
Revisions:
 Issued for Permit

Date: **OCT 23, 2017**
 Scale: **As indicated**
DETAILS

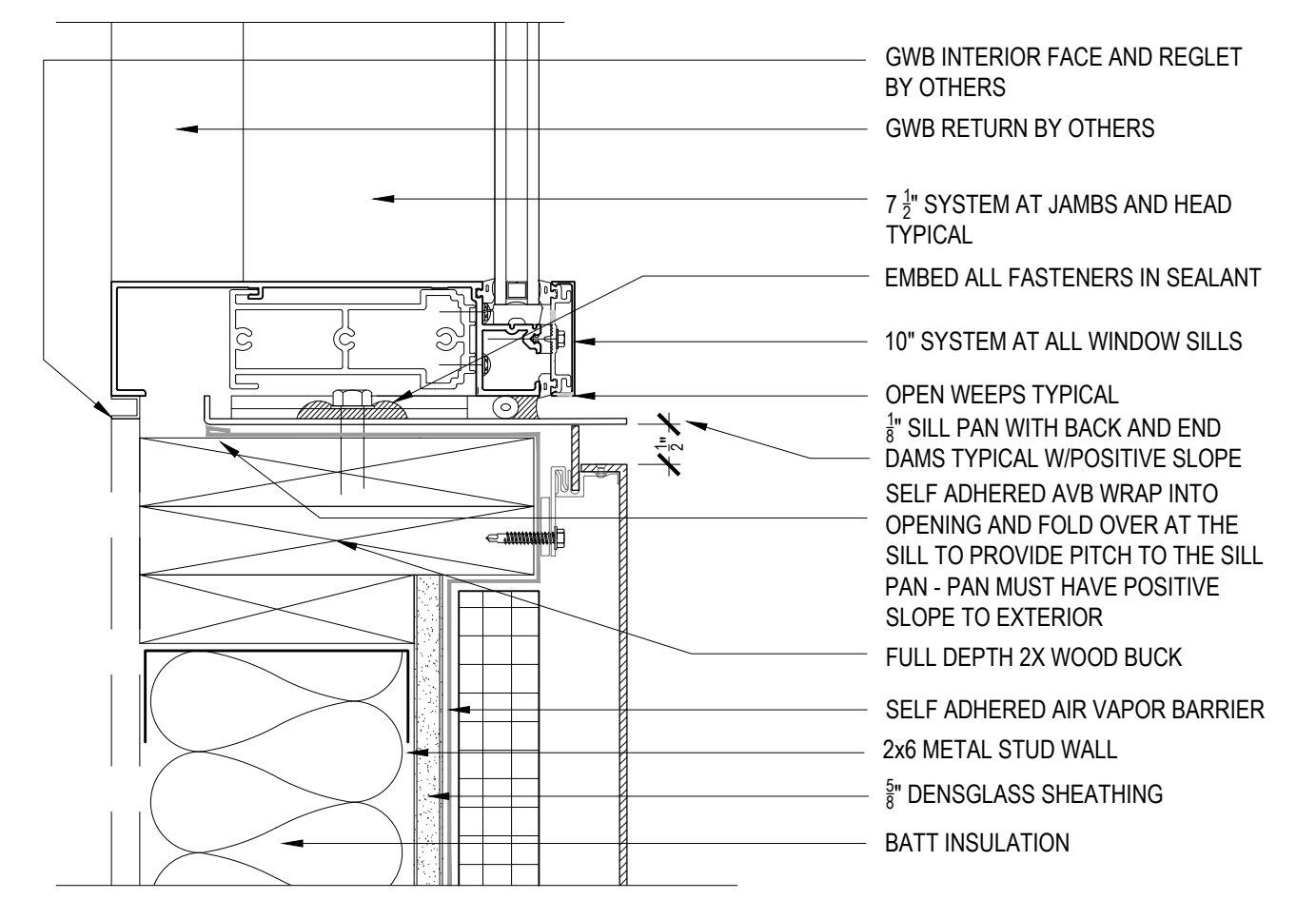
A5.05



HEAD DETAIL



JAMB DETAIL

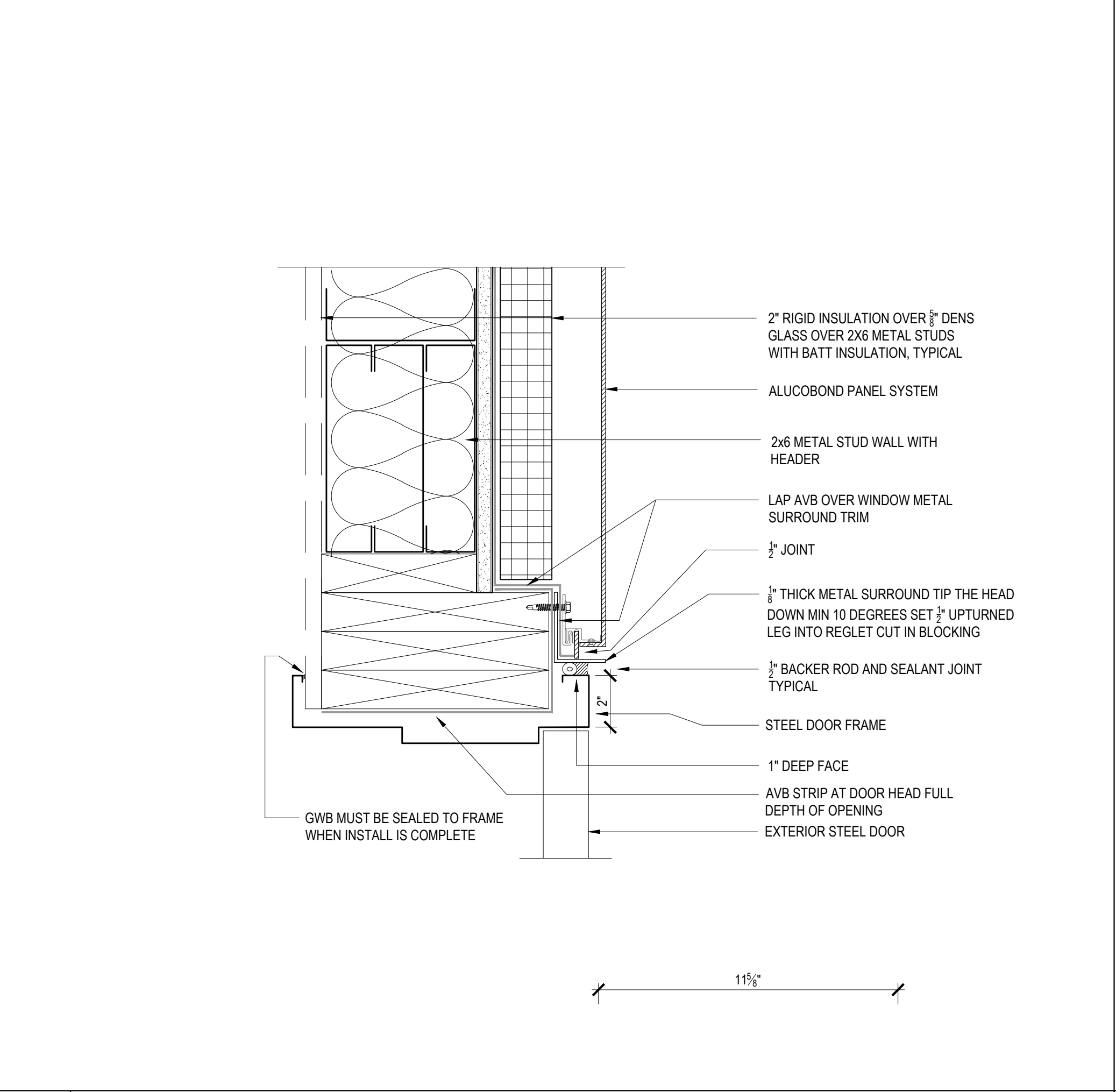


SILL DETAIL

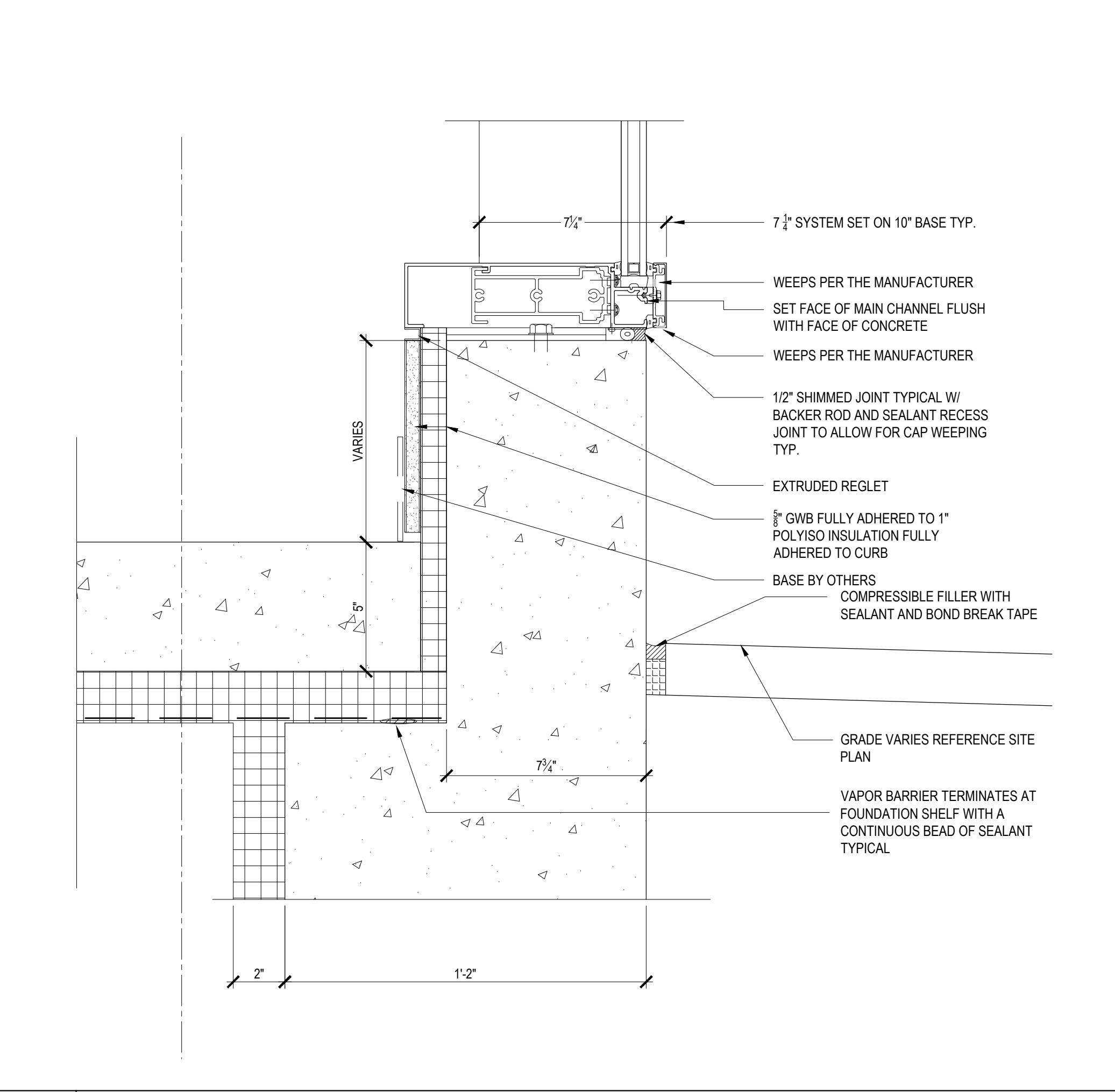
6 WINDOW HEAD - ALUCOBOND
 WALL DETAIL SCALE: 3"=1'-0"

5 WINDOW JAMB - ALUCOBOND
 WALL DETAIL SCALE: 3"=1'-0"

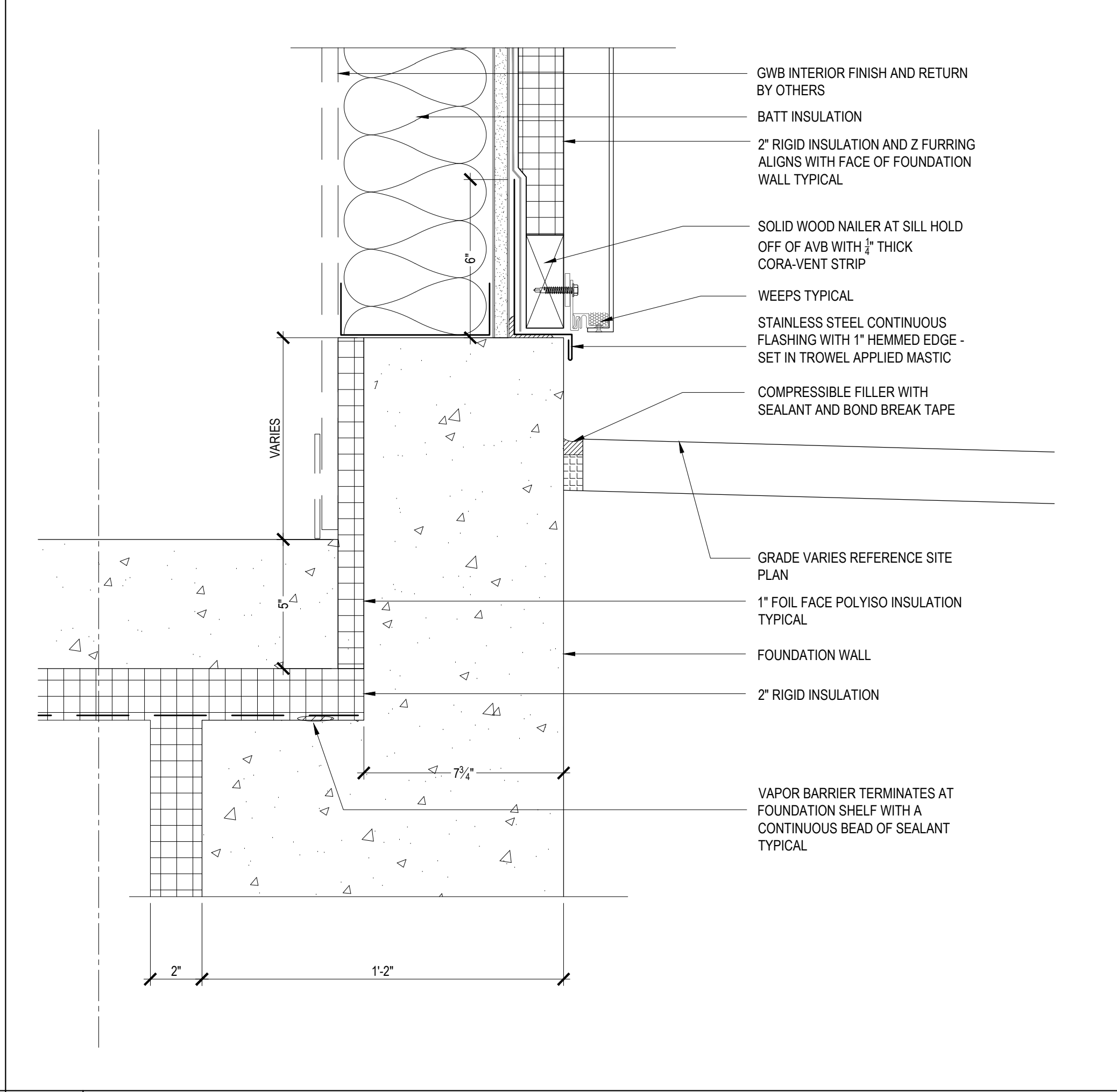
4 WINDOW SILL - ALUCOBOND
 WALL DETAIL SCALE: 3"=1'-0"



3 EXTERIOR STEEL DOOR HEAD - ALUCOBOND PANEL - TYPICAL
 WALL DETAIL SCALE: 1 1/2"=1'-0"



2 WALL BASE- CURTAIN WALL
 WALL DETAIL SCALE: 3"=1'-0"



1 WALL BASE - ALUCOBOND
 WALL DETAIL SCALE: 3"=1'-0"