

Prepared For:  
**0 Hancock Street  
LLC**

Consultant:  
**ARCHETYPE  
architects**  
48 Union Wharf Portland, Maine 04101  
(207) 772-6022 ARCHETYPE@ARCHETYPEPA.COM

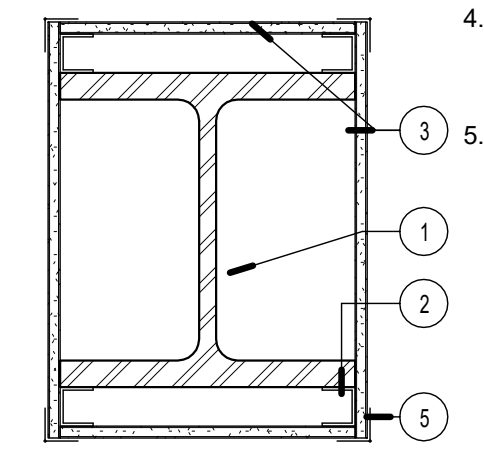
Project:  
**0 Hancock Street**  
1 Hancock Street  
Portland, Maine

Revisions:  
Issued For Permit - 10/23/2017

Date: **August 2017**  
Scale: **As indicated**  
**Interior Details**

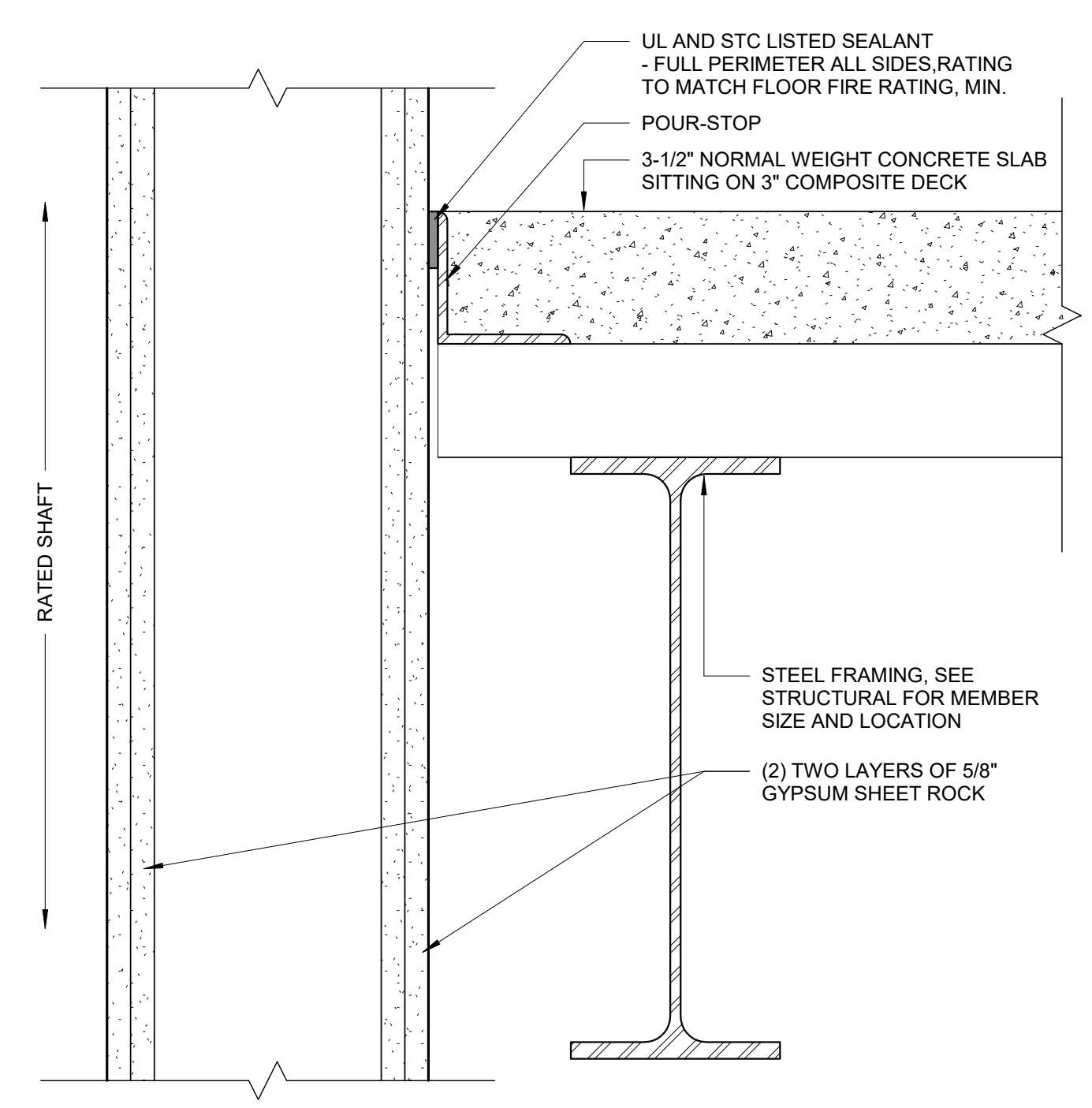
**A5.00**

**LABEL 1 HR W07** 1 HR COLUMN WRAP  
DESIGN NUMBER - X528  
FIRE RESISTANCE RATINGS - ANSIIUL 263

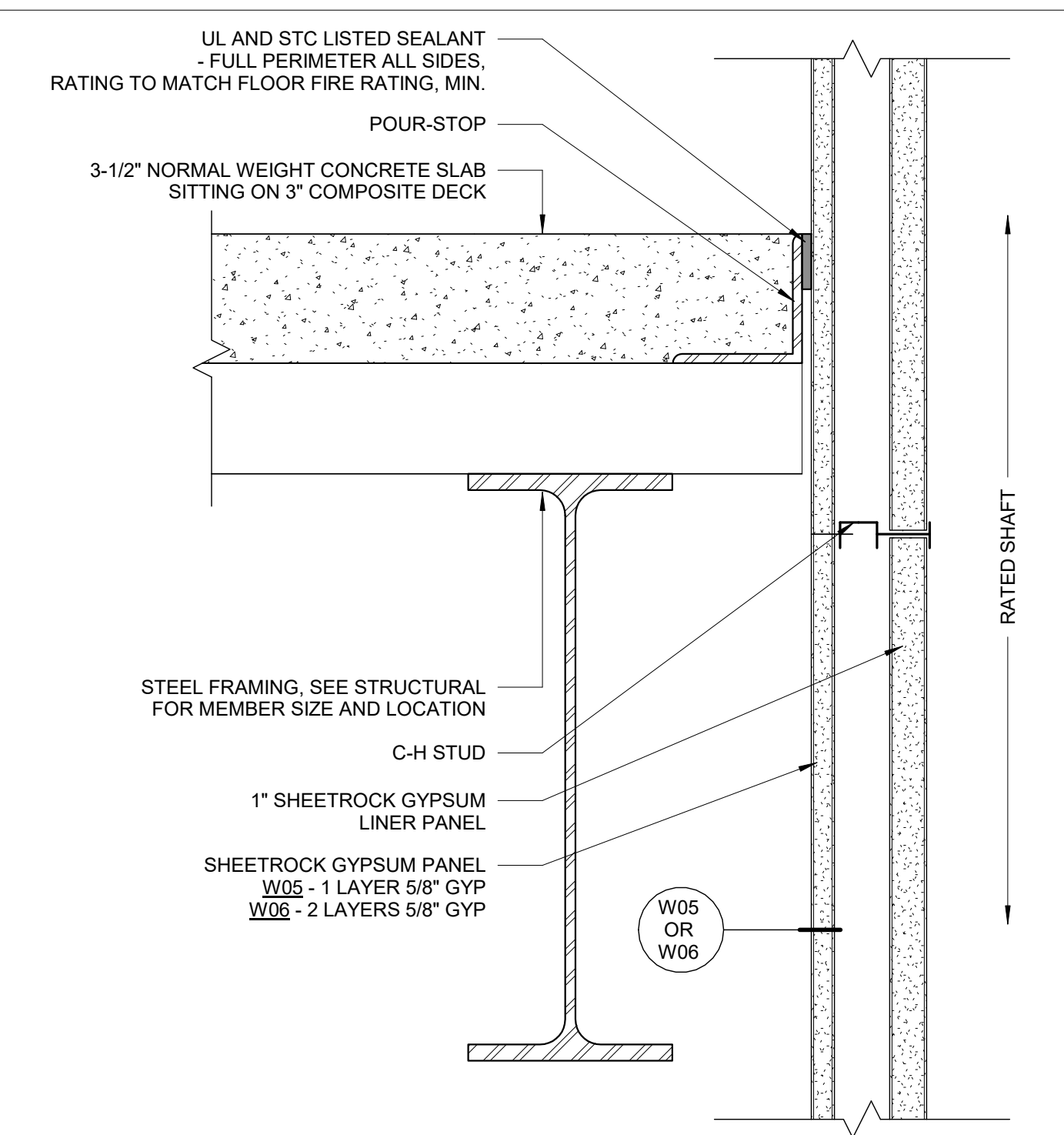


1. **STEEL COLUMN** - SEE STRUCTURAL FOR SIZES(VARY), MIN. SIZE 10x49.
2. **STEEL STUDS** - 1-5/8" STEEL STUD, FABRICATED FROM NO. 25 MSG GALV. STEEL. LENGTH TO BE 1/2" LESS THAN ASSEMBLY HEIGHT.
3. **GYPSON BOARD** - (1) ONE LAYER 1/2" TYPE X GYPSON WALL BOARD APPLIED VERTICALLY.
4. **TAPE AND COMPOUND** - (ADDED/NOT SHOWN) - VINYL DRY OR PREMIXED JOINT COMPOUND, APPLIED IN TWO COATS TO JOISTS AND SCREW HEADS. PAPER TAPE, 2 IN. WIDE, EMBEDDED IN FIRST LAYER OF COMPOUND OVER ALL JOINTS.
5. **CORNER BEADS** - NO. 28 MSG GALV. STEEL, 1-1/4" LEGS TO BE ATTACHED TO THE WALL BOARD WITH NO. 6 BY 1" SCREWS SPACED 12" O.C. MAX.

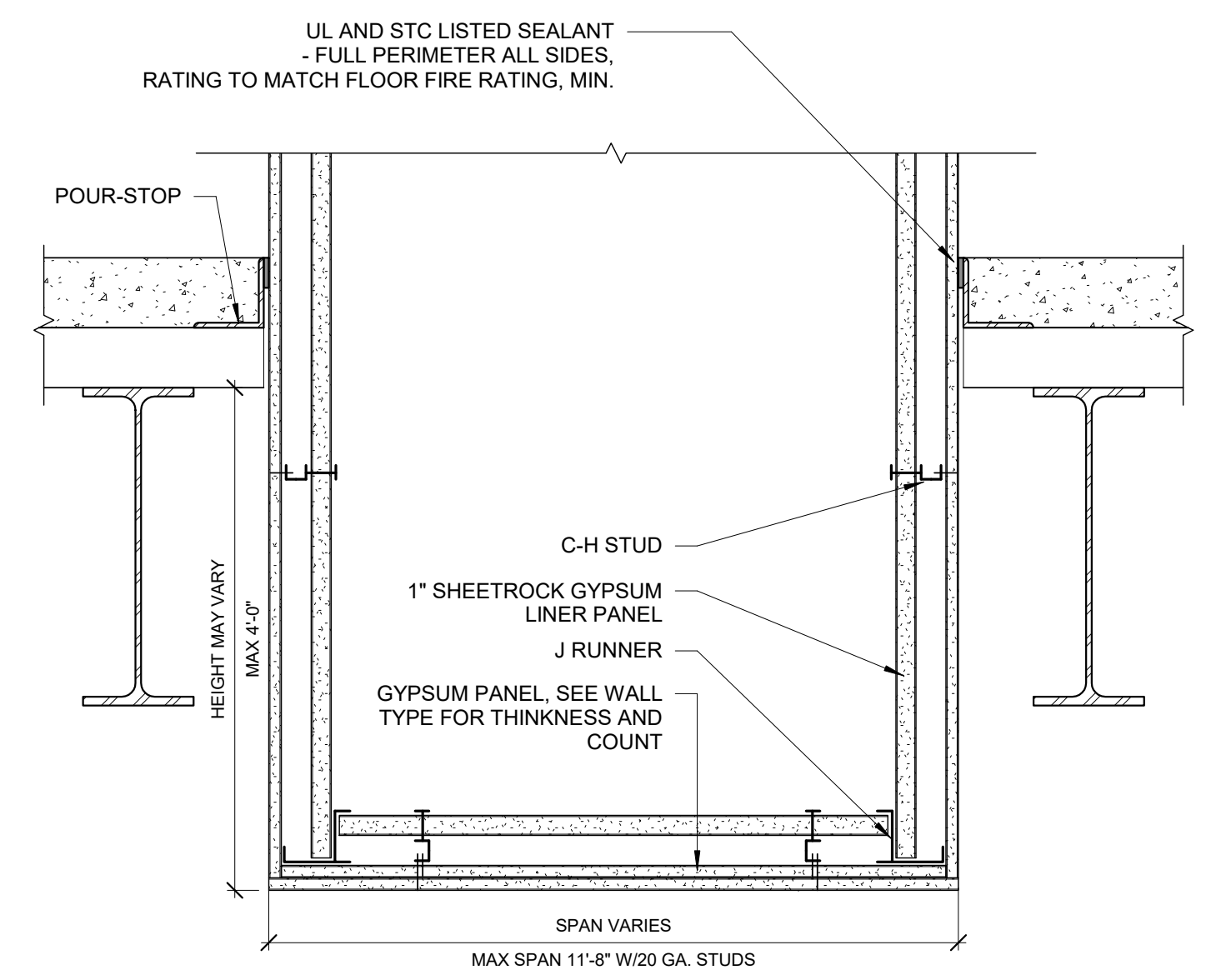
**1 | 1 HR RATED COLUMN WRAP**  
1 1/2" = 1'-0"



**4 | FLOOR INTERSECTION AT STAIR SHAFT**  
3" = 1'-0"



**2 | FLOOR INTERSECTION AT SHAFT WALL**  
3" = 1'-0"



**3 | HORIZONTAL SHAFTWALL ASSEMBLY**  
1 1/2" = 1'-0"