

AIRHANDLER UNIT SCHEDULE (AHU)																																				
TAG	DESCRIPTION	NOM. SIZE	DESIGN PERFORMANCE							VENT.		HEATING PERFORMANCE						COOLING PERFORMANCE								ELECTRICAL DATA					WEIGHT	MANUFACTURER & MODEL	NOTES			
			AIRFLOW	FAN TYPE / DRIVE	FAN SPEED	FAN MOTOR	FAN POWER	TSP	ESP	MINIMUM OCCUPIED	TYPE	INPUT	OUTPUT	EAT (F)		TOTAL CAP.	SENSIBLE CAP.	EFFIC.	TYPE	COIL			EAT (F)		PRES. DROP	LEV. AIR TEMP	VOLTS	PH	HZ	MCA				MFS		
					CFM	RPM	HP	BHP	IN WC					IN WC	CFM					MBH	MBH	*F DB	*F DB	MBH						MBH				EER	ROWS	FPI
AHU-B	ROOFTOP AIRHANDLER	12.0	3,300	ECM PLENUM FAN	1876	4.0	3.01	2,900	1.50	500	INDIRECT NG 439 SS W/ 10.1	150	120	50	83.7	137.3	94	8.6	DIGITAL SCROLL 1ST CIRCUIT	4.0	12	10	330	5/16	80.0	67.0	0.290	56.7	208	3	60	84.4	110	3,200	TRANE HORIZON OAGD144A3	ALL

- NOTES:**
- UNIT IS A OUTDOOR VERTICAL DISCHARGE/ VERTICAL RETURN CONFIGURATION W/ 2 IN DOUBLE WALL CONSTRUCTION
 - PROVIDE WITH STAINLESS STEEL DRIP PAN DRAINED TO ROOF
 - PROVIDE WITH STANDARD 14" TALL KNOCKDOWN CURB
 - PROVIDE VENTILATION AIRFLOW MONITORING AND IFM
 - PROVIDE SINGLE POINT THRU-BASE ELECTRICAL CONNECTION AND NON-FUSED DISCONNECT SWITCH W/ CONVIENCE OUTLET
 - PROVIDE 2" FILTER RACK WITH MERV 8 AND 4" FILTER RACK WITH MERV 14.
 - PROVIDE MODULATING AIR-SIDE ECONOMIZER W/ DRY-BULB CONTROL. PROVIDE BAROMETRIC RELIEF DAMPERS
 - PROVIDE BASIC FACTORY CONTROLS W/ BACNET COMMUNICATION TO BE INTEGRATED WITH SITE DDC SYSTEM
 - UNIT IS CAPABLE OF OPERATING IN A VAV W/ REHEAT SYSTEM

DUCTWORK INSULATION SCHEDULE						
PIPING SYSTEM	OPERATING TEMPERATURE RANGE (DEG F)	MEAN TEMPERATURE RATING (DEG F)	NOMINAL SIZES		INSULATION MATERIAL	VAPOR BARRIER REQUIRED
			THICKNESS INCH	R VALUE		
INTERIOR DUCT LINER (ACOUSTICAL) (PROVIDED WHERE NOTED)	0-150	75	1/2"	NA	CF	YES
SUPPLY DUCT FROM FCU TO DIFFUSERS - NON EXPOSED (UNCONDITIONED SPACE)	0-150	75	1-1/2"	R-3.5	MF	YES
SUPPLY DUCT FROM FCU TO DIFFUSERS - EXPOSED (CONDITIONED SPACE)	0-150	75	0"			
VENTILATION SUPPLY DUCT FROM ERV - NON-EXPOSED	0-150	75	1-1/2"	R-3.5	MF	YES
EXHAUST DUCT TO ERV - NON-EXPOSED	0-150	75	0"			
RETURN DUCT FROM DIFFUSERS TO FCU (UNCONDITIONED SPACE)	0-150	75	0"			
RETURN DUCT FROM DIFFUSERS TO FCU (CONDITIONED SPACE)	0-150	75	0"			

NOTES:

- THE TABLE ABOVE APPLIES TO DUCTWORK. THE BASIS OF THE ABOVE SCHEDULE IS ECONOMIC THICKNESS, PREVENTION OF CONDENSATION, AND COMPLIANCE WITH ASHRAE 90.1-2013 MINIMUM INSULATION THICKNESSES. BRANCH RUNOUTS LESS THAN 10FT CAN BE R-3.5.

DUCT INSULATION SPECIFICATIONS:

FLEXIBLE ELASTOMERIC INSULATION (FC): CLOSED-CELL, FIBER-FREE, ELASTOMERIC FOAM INSULATION, ARMSTRONG AP ARMAFLEX, OR APPROVED EQUAL. COMPLY WITH ASTM E 84 AT 25/50 FOR USE IN AIR PLENUMS. INSTALL INSULATION PER THE MANUFACTURER'S RECOMMENDATIONS.

MINERAL-FIBER DUCT-WRAP INSULATION (MF): FORMELDEHYDE-FREE, TYPE 1, MINERAL OR GLASS FIBERS BONDED WITH A THERMOSETTING RESIN. COMPLY WITH ASTM C 1290, TYPE 1, GRADE A. INSULATION SHALL HAVE A FACTORY-APPLIED FSK (FOIL-SCRIM-KRAFT). FOIL WILL BE 0.02 PERMS; COMPLY WITH ASTM E 84 AT 25/50 FOR USE IN AIR PLENUMS. INSTALL INSULATION PER THE MAUFACTURER'S RECOMMENDATIONS

EXHAUST & TRANSFER FAN SCHEDULE (EF & TF)											
TAG	SERVES	DESCRIPTION	CFM	ESP	FAN RPM	POWER	V/PH	WEIGHT	MANUF.	MODEL	NOTES
EF-1	PENTHOUSE EXHAUST	INLINE EXHAUST FAN	500	0.5"	2,418	123 W	120 / 1	15	FANTECH	FG 12M EC	1,3,4,5

NOTES:

- PROVIDE WITH SPRING BACKDRAFT DAMPER IN DUCT AT BUILDING EXIT.
-
- PROVIDE WITH VIBRATION ISOLATION W/ MOUNTING BRACKETS
- PROVIDE WITH FAN MOUNTED SPEED SWITCH FOR BALANCING
- EQUIPMENT IS UL-705

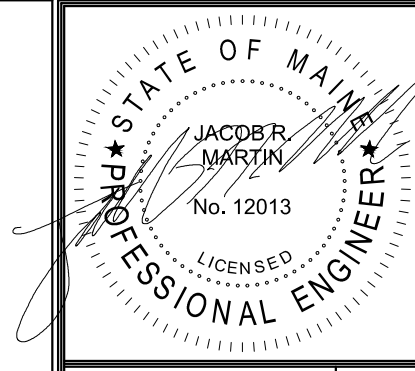
HEAT-EXCHANGER SCHEDULE (HX)																						
TAG	DESCRIPTION	CAPACITY	PLATES	PASSES	SOURCE SIDE						LOAD SIDE						SIZE			INSTALLED WEIGHT (LBS)	MANUFACTURER & MODEL	NOTES
					FLOW (GPM)	TYPE	WPD (PSI / FTHD)	CONN.	EWT (F)	LWT (F)	FLOW (GPM)	TYPE	WPD (PSI / FTHD)	CONN.	EWT (F)	LWT (F)	L	W	H			
HX-SM1	SNOWMELT SYSTEM - 1ST FLR MECH ROOM		ALLOW 316/CU	1 - COUNTERCURRENT	10	HEATING WATER	2.0 PSI / 4.6 FT	1-1/4" / 1-1/4"	160	120	10.0	SNOWMELT 40% P. GLY	2.0 PSI / 4.6 FT	1-1/4" / 1-1/4"	85	110	7.9	7.5	24.3	80	ALFA LAVAL CB-110-54H	

NOTES:

ENERGY RECOVERY VENTILATOR SCHEDULE (ERV)																																				
TAG	DESCRIPTION	SUPPLY/VENTILATION AIR					EXHAUST/RETURN AIR					COOLING						HEATING			EFFECTIVENESS				ELECTRICAL DATA					INSTALLED WEIGHT (LBS)	MANUFACTURER & MODEL	NOTES				
		AIRFLOW (CFM)	MOTOR HP	SPEED	ESP (IN WC)	TSP (IN WC)	AIRFLOW (CFM)	MOTOR HP	SPEED	ESP (IN WC)	TSP (IN WC)	TYPE	TOTAL CAPACITY	SENSIBLE CAPACITY	FLOW	EWT / LWT	WPD	EAT	LAT	ROWS / FPI	TYPE	INPUT CAPACITY	OUTPUT CAPACITY	EAT	SUMMER CONDITIONS		WINTER CONDITIONS		VOLTS				PH	HZ	MCA	MOP
																									MBH	MBH	GPM	DEG F								
ERV-1	SERVES PLAN WEST VENTILATION STACK	9,600	7.57	2,113	1.25	3.49	8,345	5.47	1,991	1	1.94	CHILLED WATER	294.5	200.7	82	44 / 52.1	6.2	79.2 / 68.1	60.7	6 / 12	NG INDIRECT	350	280	45.1 / 72.1	102.61	71.89	526.97	214.72	460	3	60	25.3	30	7,600	TRANE HORIZON N360	ALL
ERV-2	SERVES PLAN EAST VENTILATION STACK	6,500	5.04	1,891	1.25	3.32	6,630	3.7	1,715	1.00	2.09	CHILLED WATER	236.00	148.30	82.00	44 / 50.4	14.30	78.2 / 67.6	57.9	6 / 12	NG INDIRECT	250.00	200.00	50.6 / 79.1	77.62	53.22	398.26	157.67	460	3	60	19.1	25	5,700	TRANE HORIZON K210	ALL

NOTES:

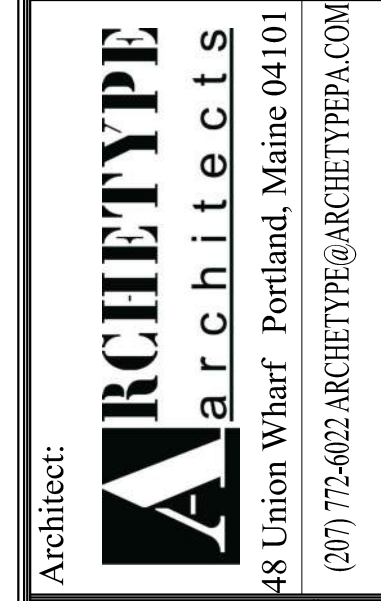
- PROVIDE WHEEL TYPE HEAT & HUMIDITY TRANSFER MEDIA. WHEEL PROVIDED WITH VFD.
- UNIT HAS DUAL MOTORS, DUAL VFD DRIVES.
- PROVIDE WITH CONTROL SYSTEM NETWORK COMMUNICATION CARD (TYPE TBD)
- PROVIDE WITH MOTORIZED DAMPERS FOR BOTH AIRSTREAMS
- PROVIDE STANDARD 2" MERV 8 FILTERS WITH UNIT.
- SIZED WITH 30% PROPYLENE GLYCOL



Prepared For:



Consultant:



Architect:

Project: 0 HANCOCK STREET
 0 HANCOCK STREET, PORTLAND MAINE

Revisions:
 ISSUED FOR PERMIT
 10/20/17

Date: Oct. 10 2017
 Scale:
 HVAC SCHEDULES

M602