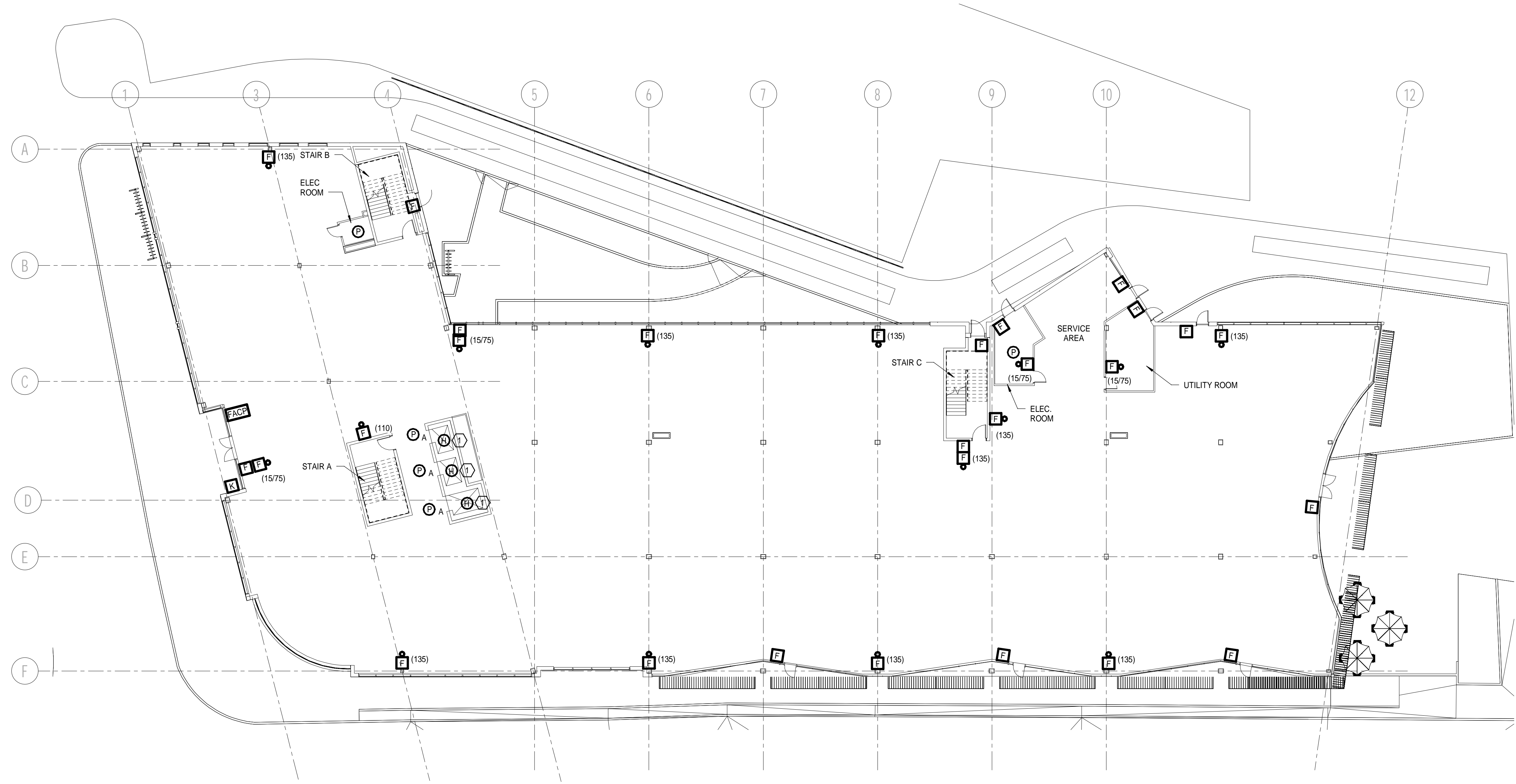


NOTES:
 1. SEE SHEET E-001 FOR LEGEND AND GENERAL NOTES.

KEYED NOTES:
 ① MOUNT HEAT DETECTOR IN ELEVATOR PIT WITHIN 2' OF SPRINKLER HEAD. PROVIDE ADDITIONAL HEAT DETECTORS AS REQUIRED TO MEET DISTANCE REQUIREMENTS.



REV	DESCRIPTION	DATE
0	ISSUED FOR PERMIT	10/23/2017

ISSUED FOR PERMIT
 10/23/2017
 CURRENT ISSUE STATUS:

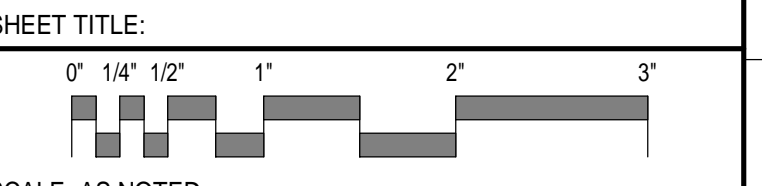
PROJECT NORTH:

SMRT Architects and Engineers
 144 Fore Street/P.O. Box 618
 Portland, Maine 04104

ARCHITECTURE | ENGINEERING | PLANNING | INTERIOR DESIGN | ENERGY SERVICES | **SMRT**

WEX

0 HANCOCK STREET, PORTLAND MAINE
FIRST FLOOR SYSTEMS PLAN



1ST FLOOR SYSTEMS PLAN A1
 1/16" = 1'-0"

PROJECT MANAGER:	DJT	PROJECT NO.:	17146
A/E OF RECORD:	DJT		
JOB CAPTAIN:	DTJ		
DRAWN BY:	CDS		
SMRT FILE:	EY101-17146	SHEET No.:	EY101