
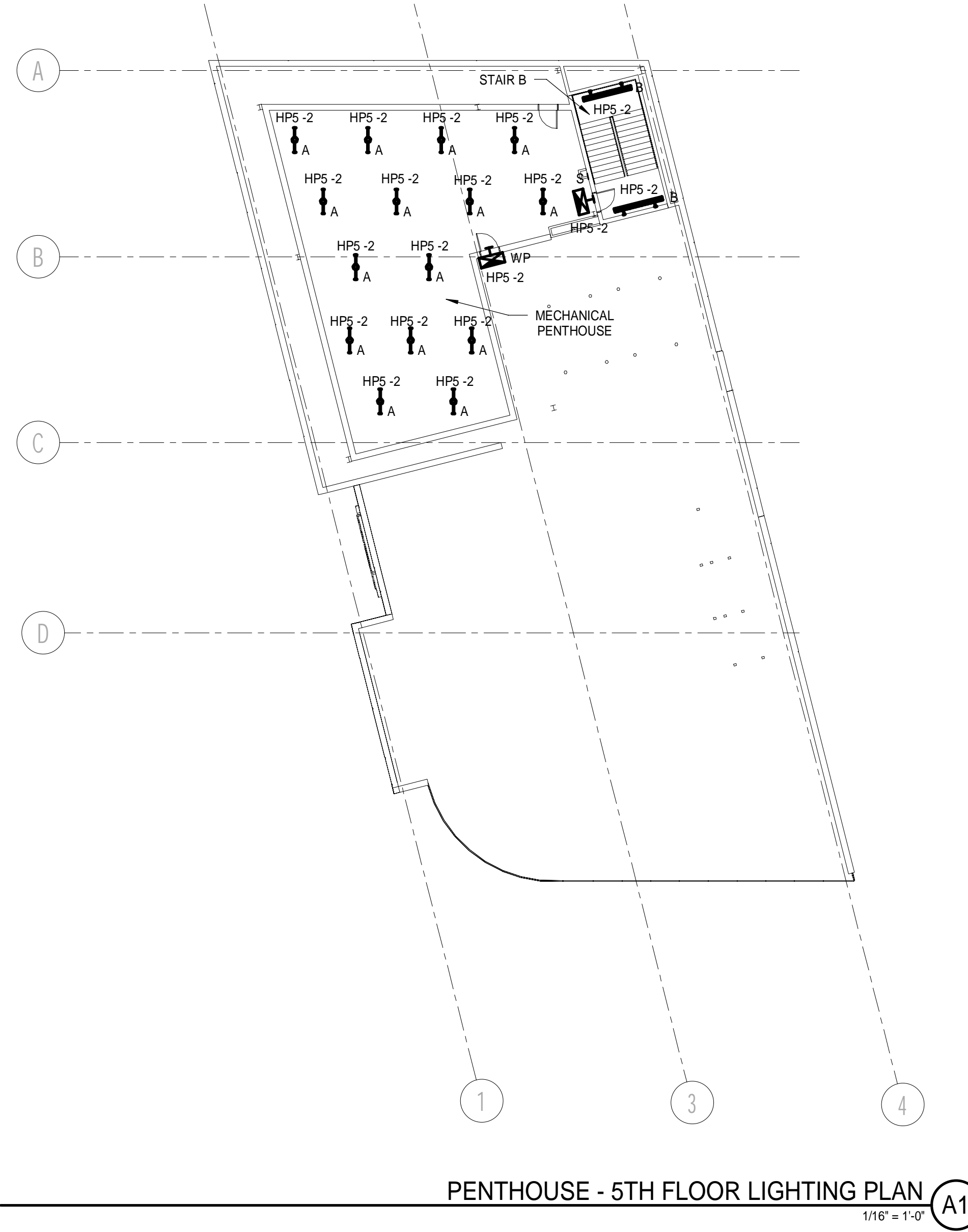


LIGHT FIXTURE SCHEDULE

TYPE	DESCRIPTION	MFR.	LAMPS	MOUNTING	NOTES
A	4' LED LENSED STRIPLIGHT WITH HIGH LUMEN OUTPUT AND INTEGRAL OCCUPANCY SENSOR. 120/277V	COLUMBIA LCL4-35HL-EU-080	55W LED 3500K	CHAIN HUNG	PROVIDE WITH BATTERY BACK-UP.
B	8' DIRECT/INDIRECT WALL MOUNT LED FIXTURE WITH HIGH OUTPUT UPLIGHT ENGINE, STANDARD OUTPUT DOWNLIGHT ENGINE, TOP GLOW DIFFUSER AND INTEGRAL OCCUPANCY SENSOR. 120/277V	FINELIGHT HP-4WM-ID-8-HO- -SO-3500K-277-SC- MCB-OBO	112W LED 3500K	SURFACE WALL	PROVIDE WITH BATTERY BACK-UP.
C	ROUND APETURE LED DOWNLIGHT UL LISTED FOR WET LOCATION 277V	BEACON CLO-24NB-55-3K- T5QM-UNV-RD-BBT	55W LED 3000K	CEILING RECESSED	
D	WALL MOUNT VAPOR TIGHT GLOBE WITH FROSTED ACRYLIC DIFFUSER. 277V	LURALINE LVB43-FR- LF1X12/65-TAL	12W LED 4000K	SURFACE WALL	FIXTURE TO BE UL LISTED FOR WET LOCATION.
	THERMOPLASTIC EMERGENCY EXIT SIGN W/MAINTENANCE FREE BATTERY AND SELF TESTING DIAGNOSTICS. PROVIDE WITH WHITE HOUSING AND RED LETTERS. 120/277V	DUAL LITE LX SERIES	LED	WALL OR CEILING	

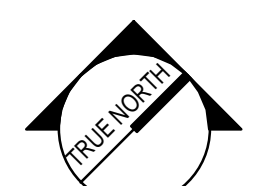
NOTES:
 1. SEE SHEET E-001 FOR LEGEND AND GENERAL NOTES.

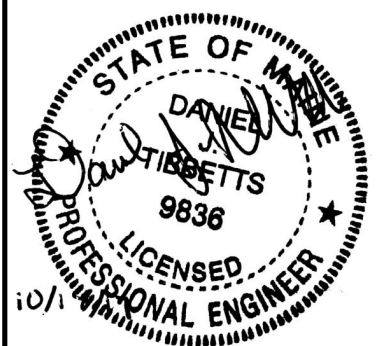


PENTHOUSE - 5TH FLOOR LIGHTING PLAN
 1/16" = 1'-0" **A1**

REV	DESCRIPTION	DATE
0	ISSUED FOR PERMIT	10/23/2017

ISSUED FOR PERMIT
 10/23/2017
 CURRENT ISSUE STATUS:


 PROJECT NORTH:



SMRT Architects and Engineers
 144 Fore Street/P.O. Box 618
 Portland, Maine 04104

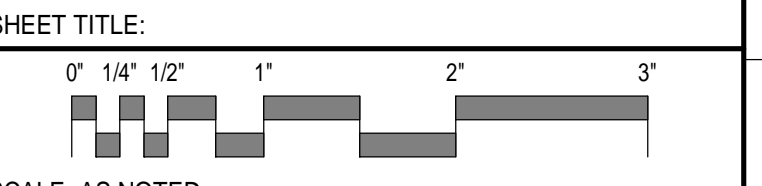
ARCHITECTURE | ENGINEERING | PLANNING | INTERIOR DESIGN | ENERGY
SMRT

WEX

0 HANCOCK STREET, PORTLAND MAINE

5TH FLOOR LIGHTING PLAN

SHEET TITLE:



SCALE: AS NOTED

PROJECT MANAGER:	DJT	PROJECT NO.:	17146
A/E OF RECORD:	DJT		
JOB CAPTAIN:	DTJ		
DRAWN BY:	CDS		
SMRT FILE:	EL105-17146	SHEET No.:	EL105