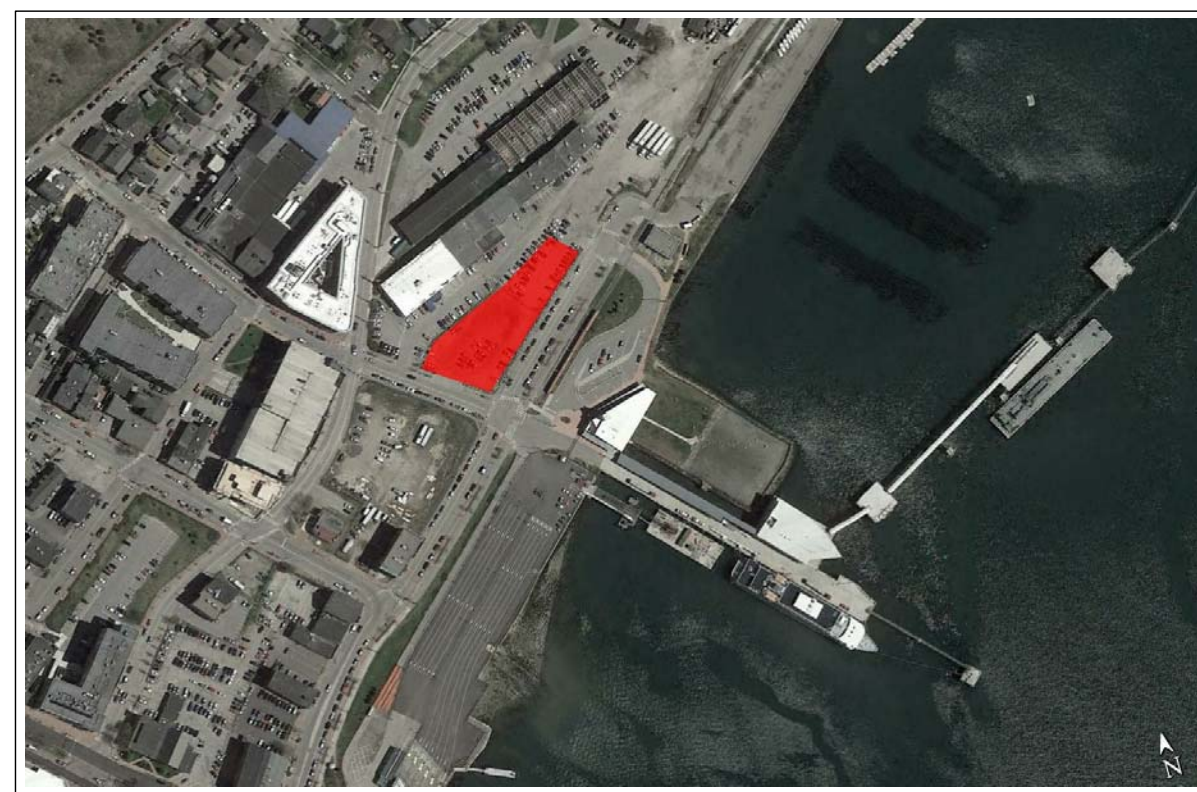


0 Hancock Street

0 Hancock Street
Portland, Maine



LOCATION MAP NOT TO SCALE

RELEVANT CODES

NFPA 101 - 2009
The proposed building is an unseparated mixed use
Construction type II(111) based on 4th floor assembly
NFPA 13 sprinkler system

1st Floor
Business and potential Mercantile use

2nd-3rd Floor
Business Use

4th Floor (interior)
Business Use

4th Floor (exterior)
Assembly Use

Occupancy Load

1st Floor
(largest potential occupant load is from retail use)
20,624 SF / 100 SF/person = 207
10,000 SF / 130 SF/person = 334

2nd-3rd Floor
30,353 SF / 100 SF/person = 314

4th Floor (interior)
9,336 SF / 100 SF/person = 94

4th Floor (exterior)
Max Occupant Load is
limited to exit capacity

Capacity of Means of Egress Floors 1 thru 3

Function of	Location	Floor Area	Occupants	Req'd Width	Prov. Width
Business	1st Floor	20,624 sf	207 x 2"	41.4" (doors)	100.5"(doors)
Mercantile	1st Floor	10,000 sf	334 x 2"	66.8" (doors)	136"(doors)
Business	Floors 2 & 3	31,353 sf	314 x .3"	94.1" (stairs)	180"(stairs)
			314 x 2"	62.8" (doors)	100.5"(doors)

Limiting Capacity of Means of Egress on 4th Floor
Capacity of each stair at 4th floor is $146.7 + [(60'-44)/0.218] = 219$ x 3 stairs = 657
Capacity of each stair door at 4th floor is $40.5' / .2 = 202.5$ x 3 stairs = 607
Limitation of door width determines max occupant load

T12.1.6

New Business Occupancy Chapter 38
Ordinary Hazard
Construction requirements based on assembly
Occupant load per 7.3.1.2

Doors per 7.2.1 permitted
Locks per 7.2.1.5.4 permitted
Area of refuge not required w/sprinkler
Number of Exits based on assembly

Arrangement of Means of Egress

Exits at 1/3 the building diagonal
Common Path = 100' w/sprinkler
Travel Distance = 300' w/sprinkler
Emergency lighting is required

Protection

Vertical Openings = 2 hours

Interior Finish

Exits - Class A or B
Interior walls and ceilings - Class A, B or C
Floor Finish in exits - Class 1 or 2

Detecton, Alarm and Communications Systems

Fire Alarm System is required
Alarm system initiated by sprinkler
Occupant notification alarm is required. Positive alarm sequence shall be permitted provided that it is in accordance with NFPA 72

7.3.3.2

New Business Occupancy Chapter 38
Ordinary Hazard
Construction requirements based on assembly
Occupant load per 7.3.1.2

Doors per 7.2.1 permitted
Locks per 7.2.1.5.4 permitted
Area of refuge not required w/sprinkler
Number of Exits based on assembly

Arrangement of Means of Egress

Exits at 1/3 the building diagonal
Common Path = 100' w/sprinkler
Travel Distance = 300' w/sprinkler
Emergency lighting is required

Protection

Vertical Openings = 2 hours

Interior Finish

Exits - Class A or B
Interior walls and ceilings - Class A, B or C
Floor Finish in exits - Class 1 or 2

Detecton, Alarm and Communications Systems

Fire Alarm System is required
Alarm system initiated by sprinkler
Occupant notification alarm is required. Positive alarm sequence shall be permitted provided that it is in accordance with NFPA 72

DRAWING LIST

GENERAL

AC0.0 Cover Sheet
AC01 Code Summary
LS1.1 Life Safety Plan
LS1.2 Life Safety Plan

CIVIL

C1.0 Cover Sheet
C1.1 General Notes and Legends
C2.0 Boundary and Topographic Survey
C2.1 Existing Condition and Demolition Plan
C2.2 Construction Management Plan
C3.0 Site Layout Plan
C4.0 Grading and Drainage Plan
C5.0 Utility Plan
C6.0 Landscape Site Sidewalk Details
C6.1 Stormwater and Utility Details
C6.2 Pavement Erosion and Miscellaneous Details
C6.3 Miscellaneous Utility Details
C6.4 Miscellaneous Details
L1.0 Landscape Plan
L2.0 Landscape Detail Plan
L3.0 Landscape Details

STRUCTURAL

S1.02 Second Floor Framing Plan
S1.03 Third Floor Framing Plan
S1.04 Fourth Floor Framing Plan
S1.05 Roof Framing Plan
S1.06 High Roof Framing Plan
S2.01 General Notes and Typical Details
S2.02 Typical Details
S2.03 Typical Masonry Details
S2.04 Typical Details
S2.05 Typical Details
S2.06 Typical Details
S3.01 Column Schedule and Pier Details
S3.02 Brace Frames and Details
S4.01 Foundation Sections and Details
S5.01 Steel Sections and Details

ARCHITECTURAL DRAWINGS

A1.01 First Floor Plan
A1.02 Second and Third Floor
A1.03 Fourth Floor Plan
A1.04 Overall Roof Plan
A1.04a Roof Plan
A1.05 Enlarged Roof Plan
A1.06 Enlarged Roof Plan
A2.01 Building Elevations
A2.02 Building Elevations
A3.01 Building Section
A3.02 Building Section
A3.03 Building Section
A3.04 Building Section
A3.11 Wall Sections
A3.12 Wall Sections
A3.13 Wall Sections
A3.14 Wall Sections
A3.15 Wall Sections
A3.16 Wall Sections
A3.17 Wall Sections
A3.18 Wall Sections
A3.19 Wall Sections
A3.20 Wall Sections
A3.21 Elevator Section and Details
A3.22 Stair A Sections and Details
A3.23 Stair B Sections and Details
A3.24 Stair C Sections and Details
A4.00 Wall Types
A4.02 Floor, Ceiling, Roof Types
A5.00 Interior Details
A5.01 Plan Details
A5.02 Plan Details
A5.03 Plan Details
A8.01 Door Schedule

MECHANICAL

M001 Legend and Abbreviations
M100A Underslab HVAC Piping
M100B Underslab HVAC Piping
M101A First Floor HVAC
M101B First Floor HVAC
M102A Second Floor HVAC
M102B Second Floor HVAC
M103A Third Floor HVAC
M103B Third Floor HVAC
M104A Fourth Floor HVAC
M104B Fourth Floor HVAC
M105 Penthouse HVAC
M401 HVAC Enlarged Plan
M601 HVAC Schedule
M602 HVAC Schedule
M701 HVAC Riser Diagram

PLUMBING

PW100A Under Slab Domestic Water
PW100B Under Slab Domestic Water
PW101A L1 Domestic Water
PW101B L1 Domestic Water
PW102A L2 Domestic Water
PW102B L2 Domestic Water
PW103A L3 Domestic Water
PW103B L3 Domestic Water
PW104A L4 Domestic Water
PW104B L4 Domestic Water
PW105 L5 Domestic Water

PL100A Under Slab DWV

PL100B Under Slab DWV
PL101A Level 1 DWV
PL101B Level 1 DWV
PL102A Level 2 DWV
PL102B Level 2 DWV
PL103A Level 3 DWV
PL103B Level 3 DWV
PL104A Level 4 DWV
PL104B Level 4 DWV
PL105 Penthouse DWV
PL601 Plumbing Schedules
PL701 Plumbing Riser Diagrams
PL702 Unnamed

ELECTRICAL

E-001 Legend and General Notes
ES101 Electrical Site Plan
ES301 Light Fixture Schedule and Details

EG101 Under Slab and Grounding Plan
EP101 1st Floor Power Plan
EP102 2nd Floor Power Plan
EP103 3rd Floor Power Plan
EP104 4th Floor Power Plan
EP105 5th Floor Power Plan
EP601 Panel Schedule
EP602 Panel Schedule
EP603 Panel Schedule
EP604 Panel Schedule
EP651 One-Line Diagram

EL101 1st Floor Lighting Plan
EL102 2nd Floor Lighting Plan
EL103 3rd Floor Lighting Plan
EL104 4th Floor Lighting Plan
EL105 5th Floor Lighting Plan
EY101 1st Floor Systems Plan
EY102 2nd Floor Systems Plan
EY103 3rd Floor Systems Plan
EY104 4th Floor Systems Plan
EY105 5th Floor Systems Plan

Client:
0 Hancock Street LLC
PO Box 910
Portland, ME
04098
207.776.0304

Architect:
Archetype Architects
48 Union Wharf
Portland, ME
04101
207.772.6022

Contractor:
Cianbro
60 Cassidy Point Drive
Portland, ME
04102
207.992.9374

Structural Engineer:
Veitas & Veitas Engineers
639 Granite Street
Braintree, MA
02184
781.843.2863

Civil Engineer:
Stantec
482 Payne Road
Scarborough, ME
04074
207.887.3478

Landscape Architect:
Mohr & Seredin
18 Pleasant St
Portland, ME
04101
207.871.0003

Envelope Consultant:
Envelope Architecture
and Consulting
101 Whites Bridge Rd
Windham, ME
04062
207.807.6661

THIS PERMIT IS FOR CORE AND SHELL ONLY.
WE WILL NOT BE REQUESTING A C OF O.

ALL INTERIOR FIT-UPS, ELECTRICAL, PLUMBING
AND MECHANICAL WILL BE FILED UNDER A
SEPARATE PERMIT APPLICATION.