

Prepared For:
**0 Hancock Street
LLC**

Consultant:
ENVELOPE
ARCHITECTURE & CONSULTING
BUILDING ENVELOPE DESIGN
COMMERCIALS • WINDHARVEST
207-807-6661

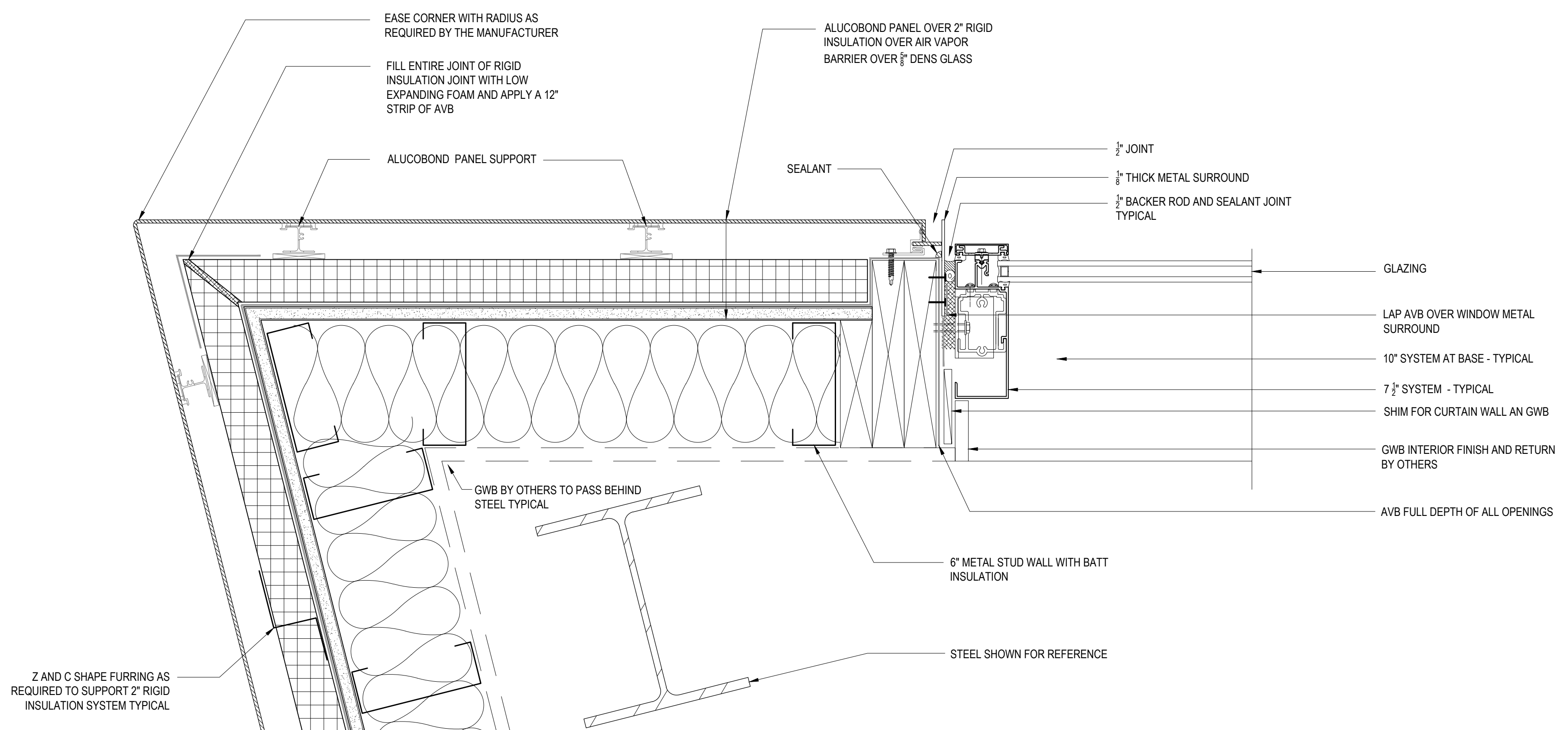
Architect:
ARCHETYPE
architects
48 Union Wharf Portland, Maine 04101
(207) 775-6022 ARCHETYPE@ARCHETYPEPA.COM

Project:
**WEX
BUILDING**
1 Hancock St. Portland Maine

Revisions:
Issued for Permit

Date: **OCT 23, 2017**
Scale: **As indicated**
PLAN DETAILS

A5.02

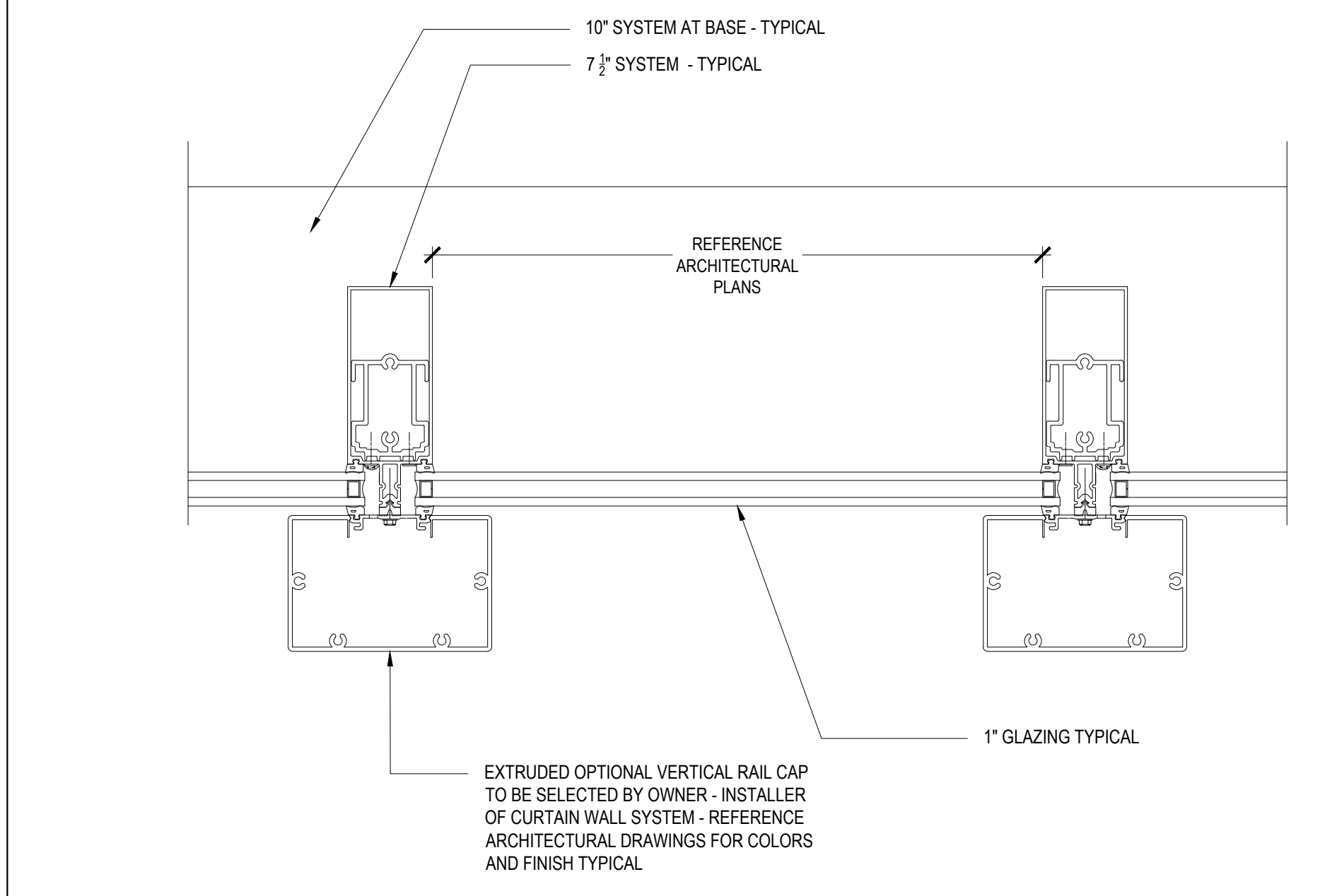


Z AND C SHAPE FURRING AS REQUIRED TO SUPPORT 2\"/>

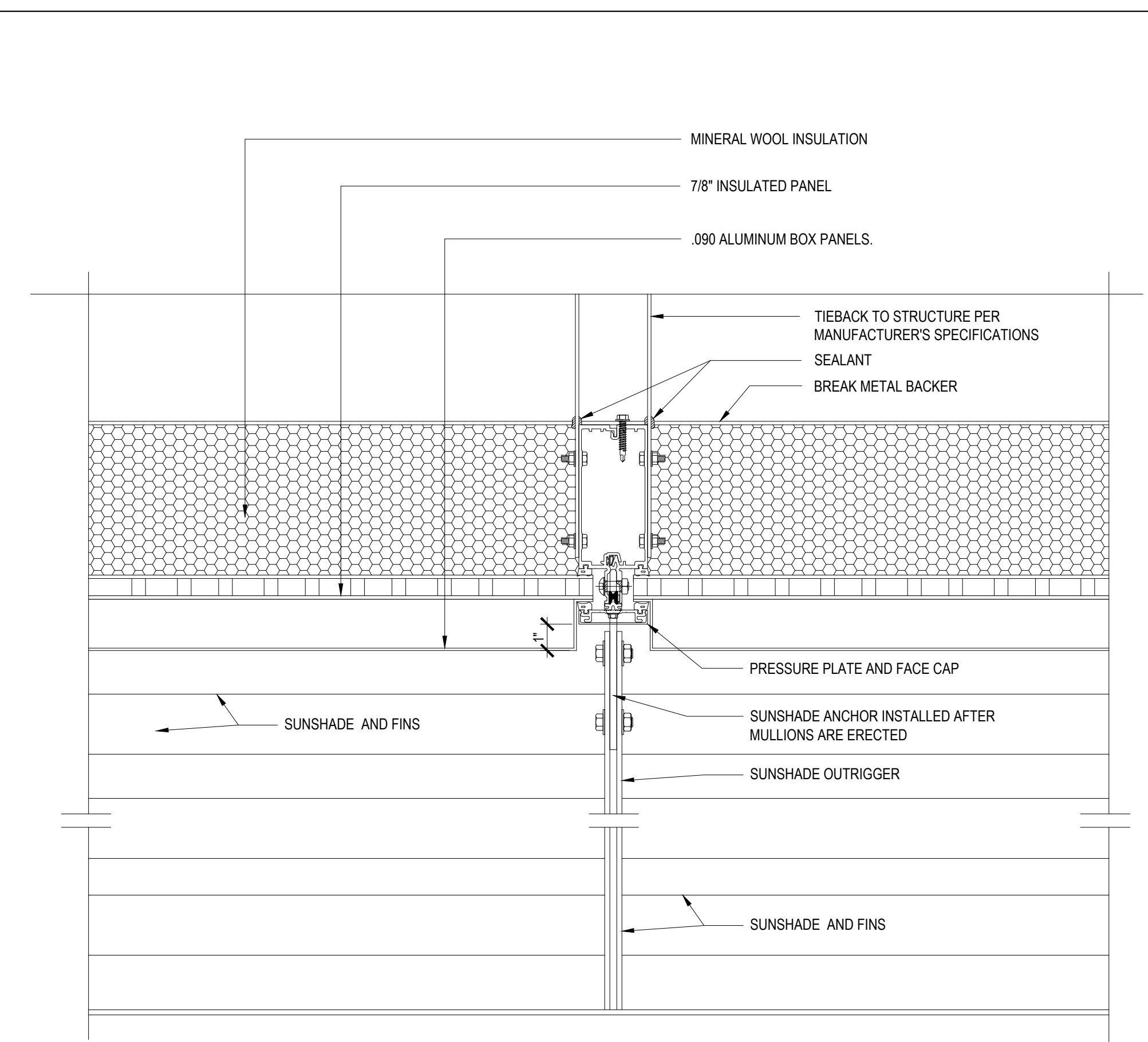
ALUCOBOND PANEL SUPPORT

SEALANT TYPICAL

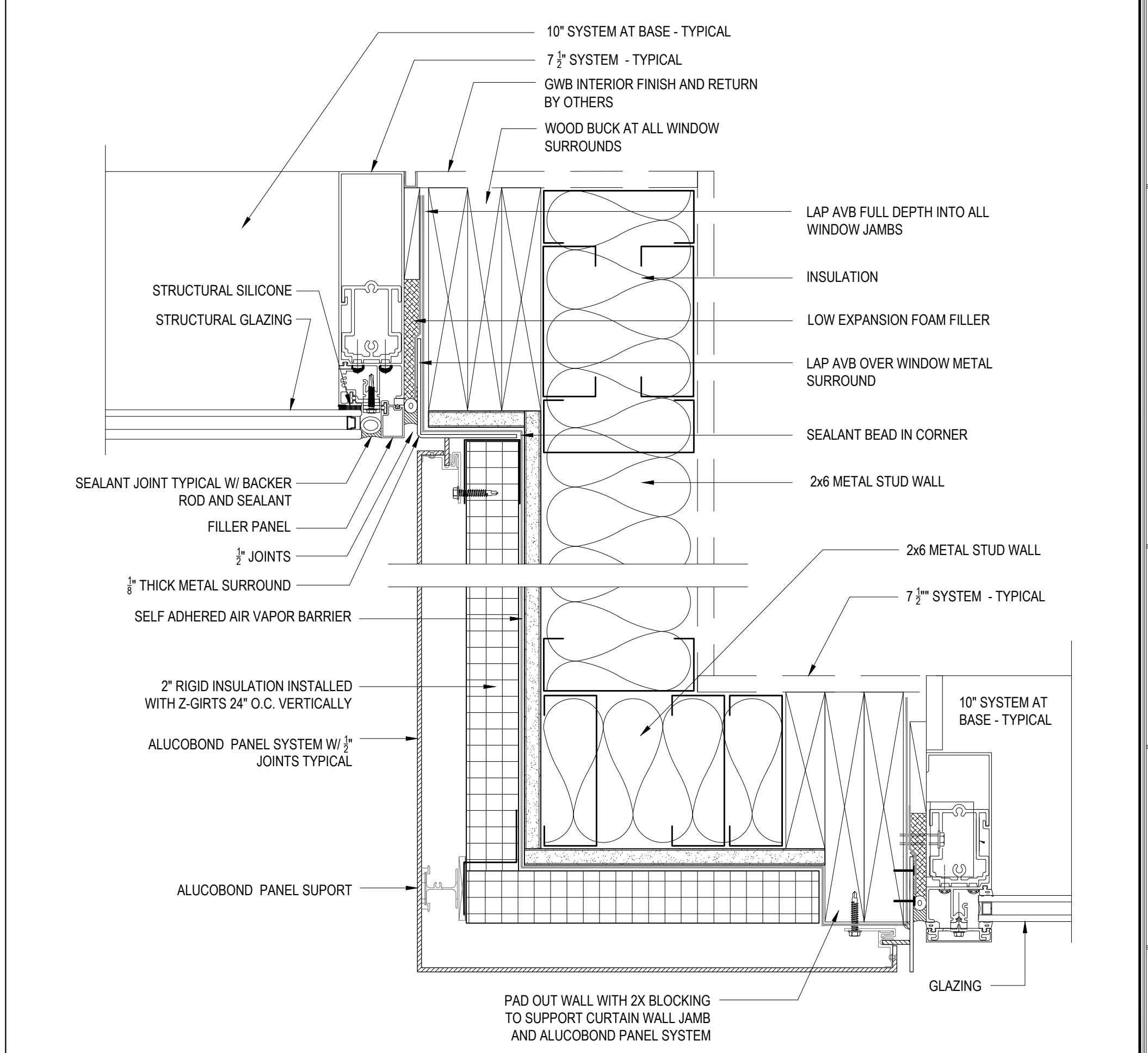
THIS AREA AS SHOWN IN THE REST OF THIS DETAIL, TYPICAL



4 DECORATIVE VERTICAL CAPS
PLAN DETAIL SCALE: 3"=1'-0"



2 SUN SHADE AT CURTAIN WALL DETAIL
PLAN DETAIL SCALE 3"=1'-0"



1 EXTERIOR INSIDE - OUTSIDE CORNER
PLAN DETAIL SCALE: 3"=1'-0"

3 EXTERIOR CORNER DETAIL
PLAN DETAIL SCALE: 3"=1'-0"