

Prepared For:  
**0 Hancock Street  
LLC**

Consultant:  
**ENVELOPE**  
ARCHITECTURE & CONSULTING  
BUILDING ENVELOPE DESIGN  
CONSULTANTS • WINDHAM, ME  
207-807-6661

Architect:  
**ARCHETYPE**  
architects  
48 Union Wharf Portland, Maine 04101  
(207) 773-6022 ARCHETYPE@ARCHETYPEPA.COM

Project:  
**WEX  
BUILDING**  
1 Hancock St. Portland Maine

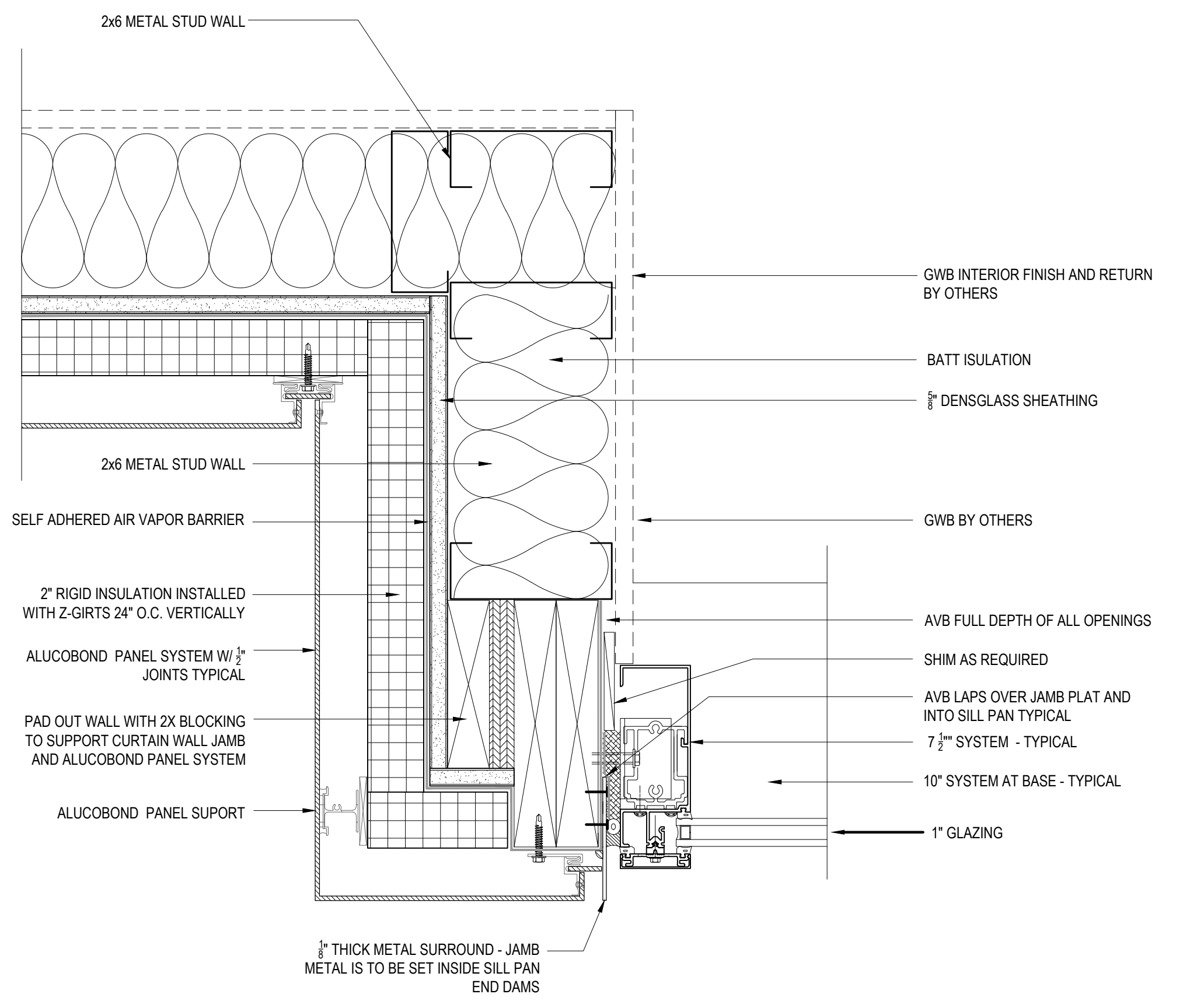
Revisions:  
Issued for Permit

Date:  
OCT 23, 2017

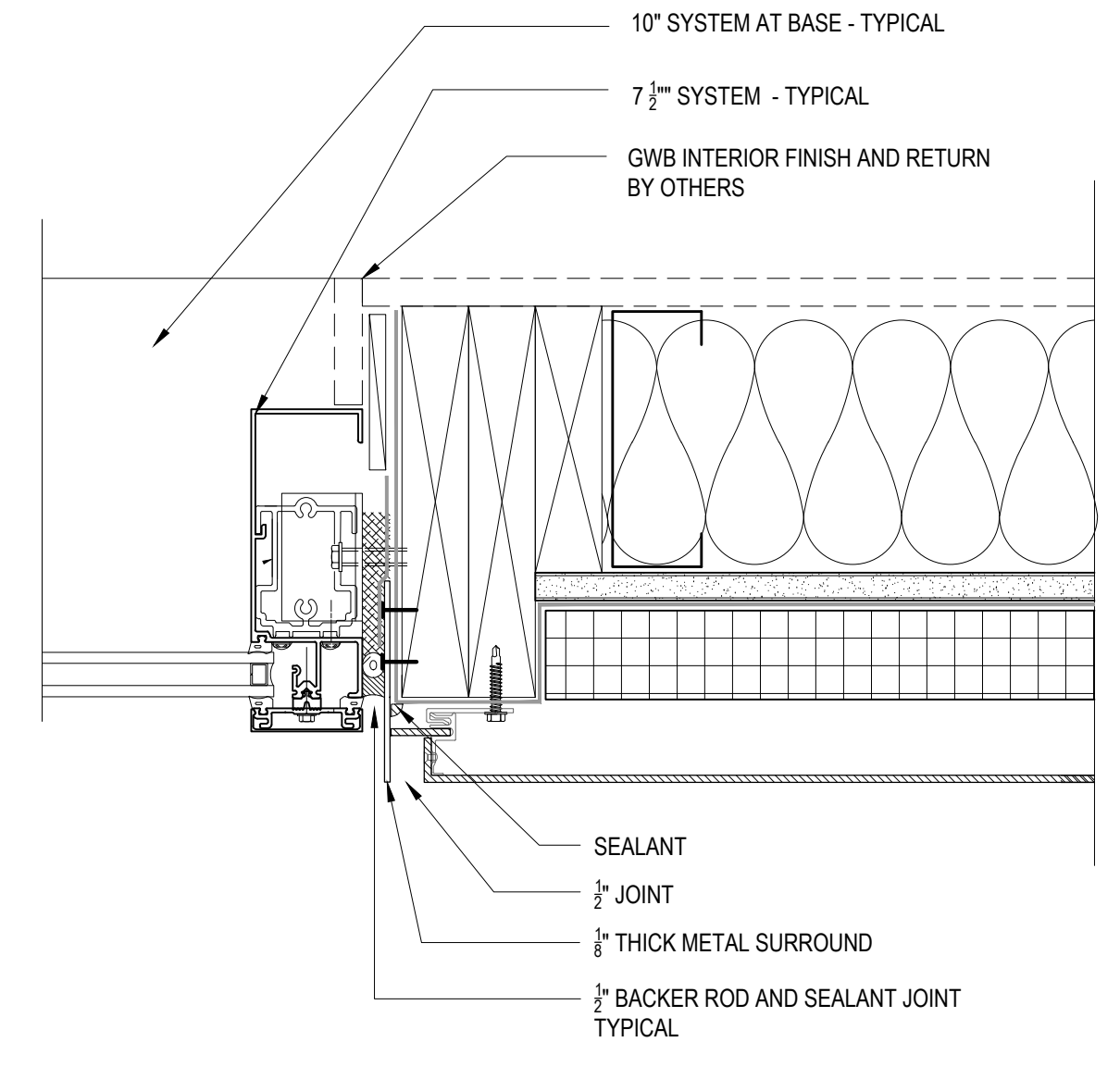
Scale:  
As indicated

**PLAN DETAILS**

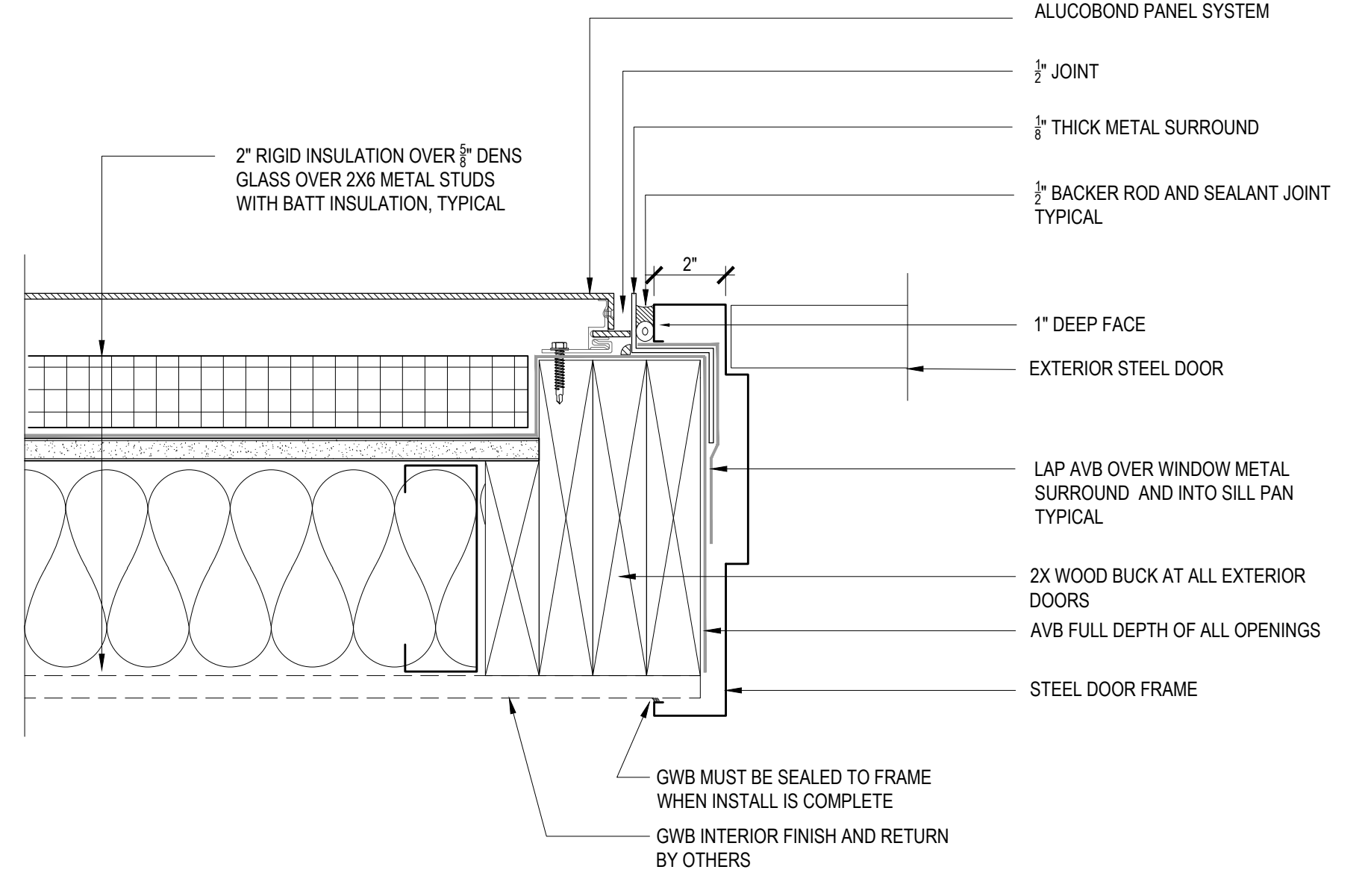
**A5.01**



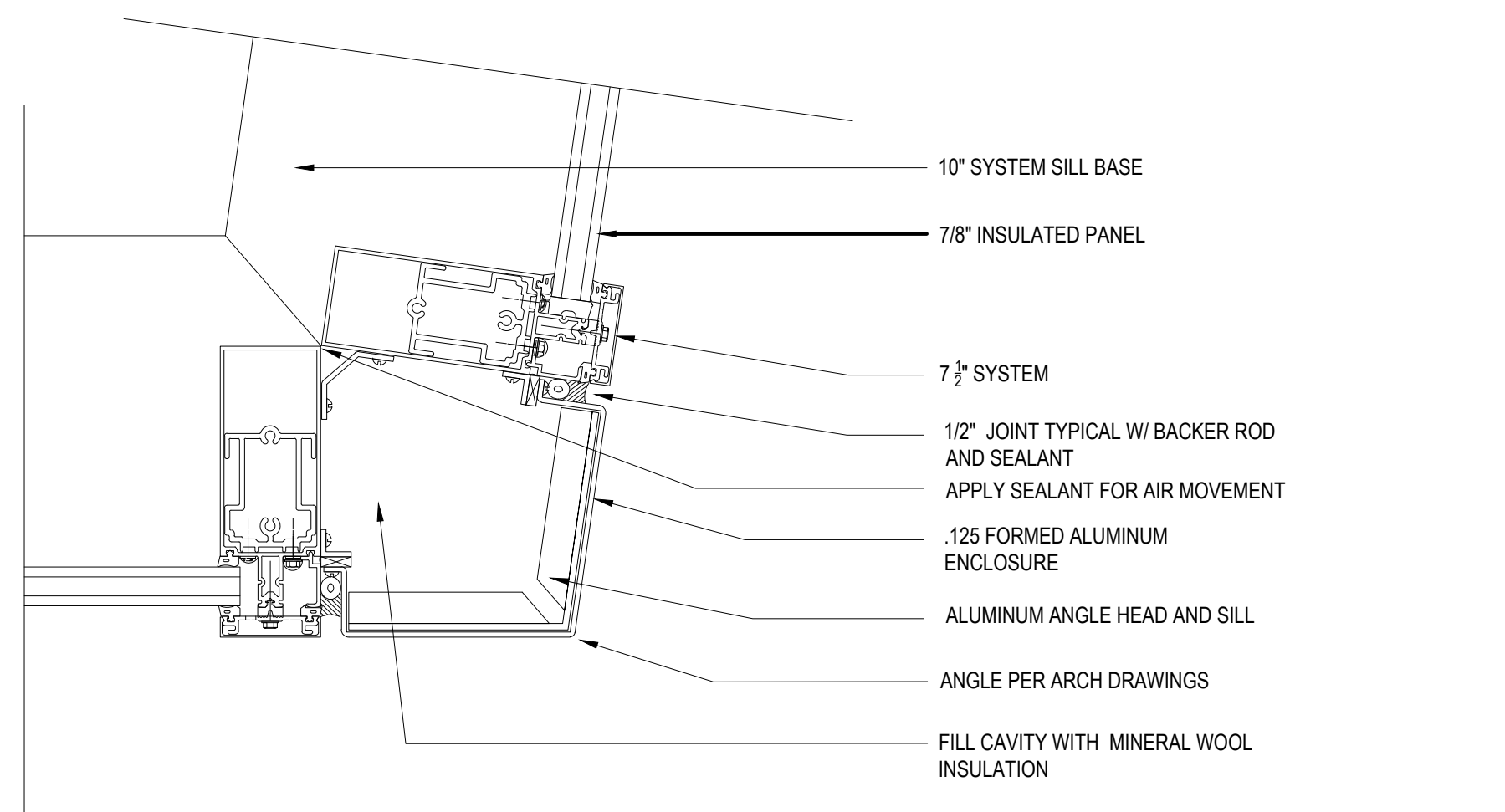
**4 CURTAIN WALL TO METAL PANEL DETAIL**  
PLAN DETAIL SCALE: 3"=1'-0"



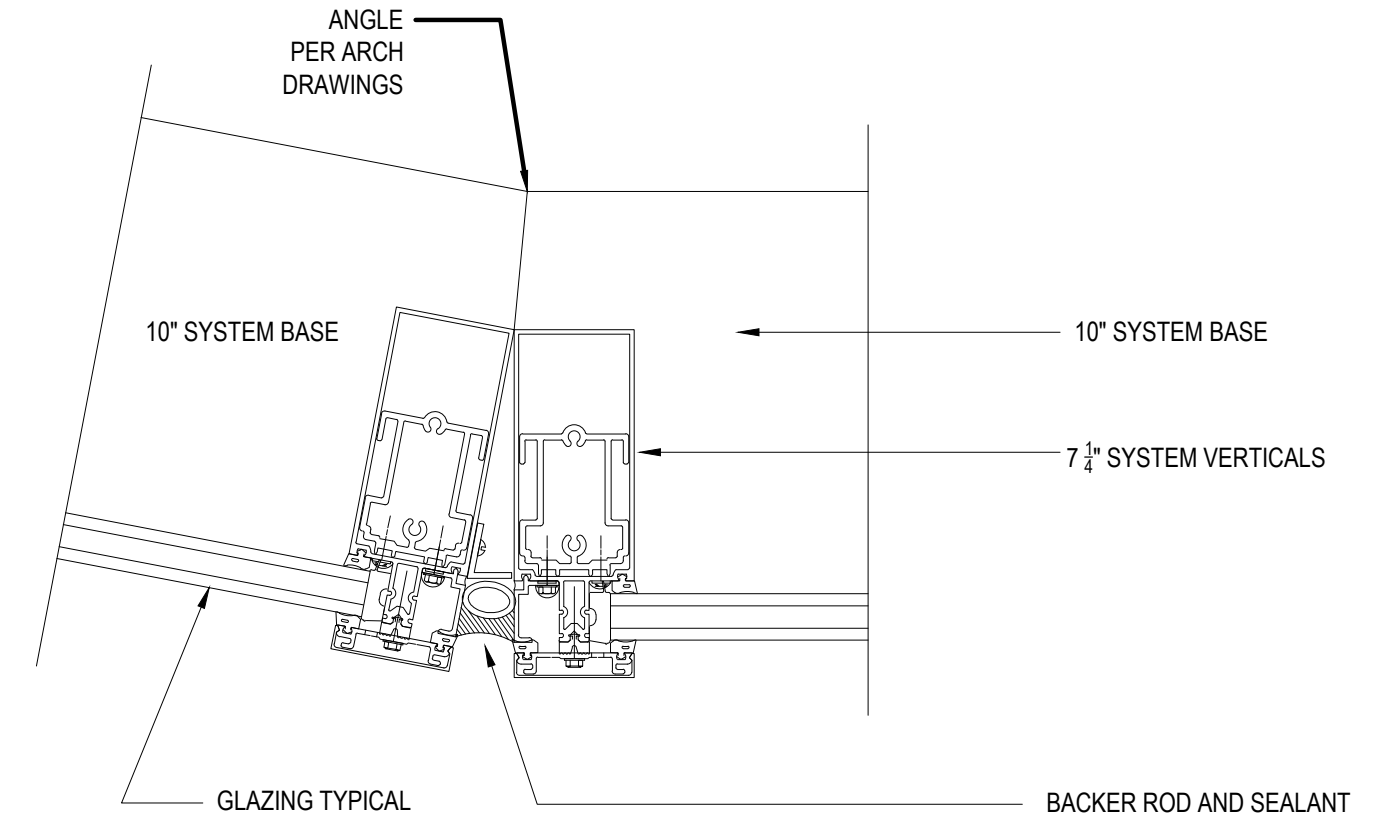
**5 CURTAIN WALL TO METAL PANEL DETAIL**  
PLAN DETAIL SCALE: 3"=1'-0"



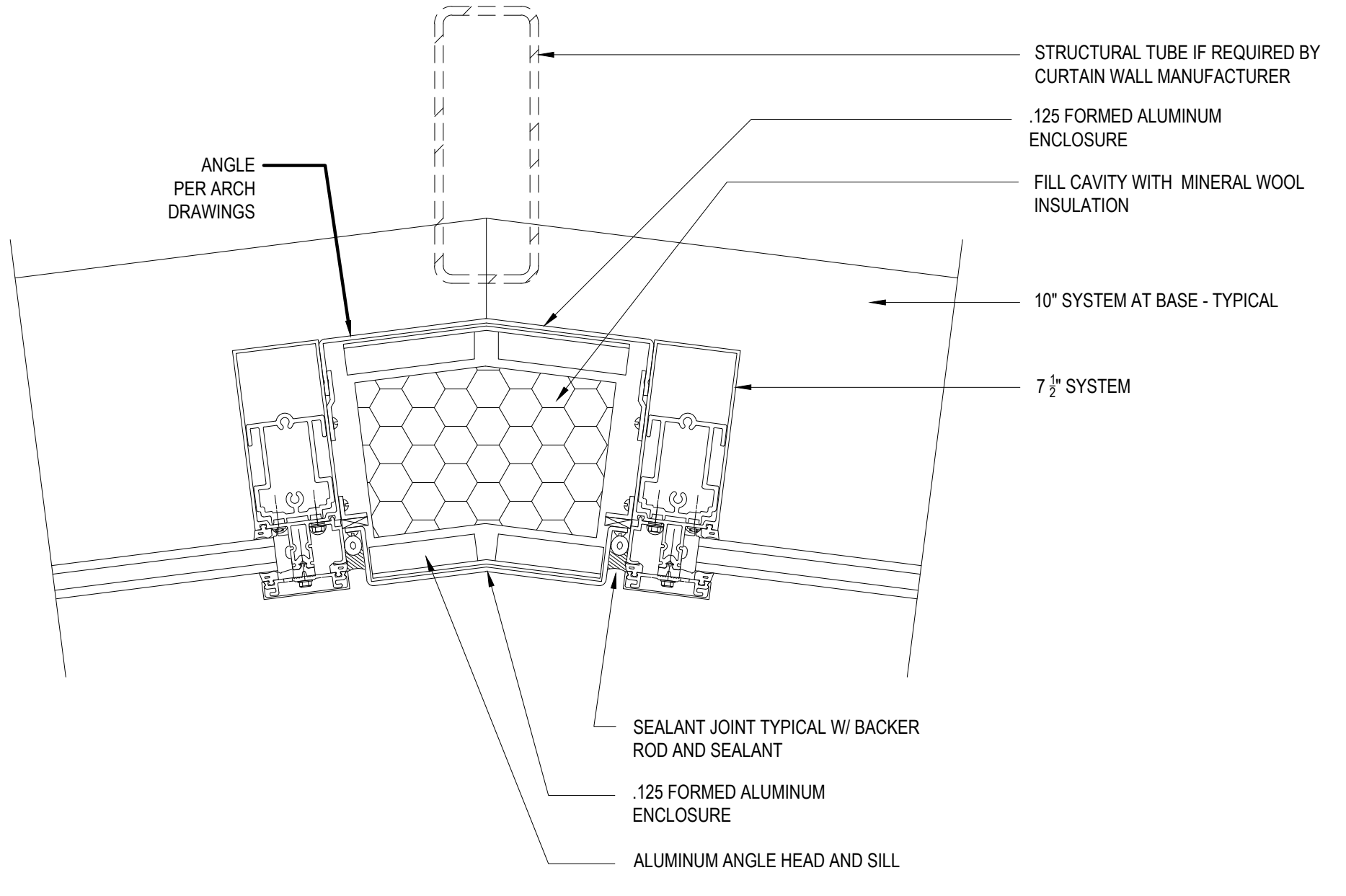
**6 TYPICAL EXTERIOR STEEL DOOR JAMB DETAIL**  
PLAN DETAIL SCALE: 3"=1'-0"



**1 EXTERIOR CORNER - METAL PANEL**  
PLAN DETAIL SCALE: 3"=1'-0"



**2 CURTAIN WALL TO METAL PANEL DETAIL**  
PLAN DETAIL SCALE: 3"=1'-0"



**3 CURTAIN WALL DETAIL**  
PLAN DETAIL SCALE: 3"=1'-0"