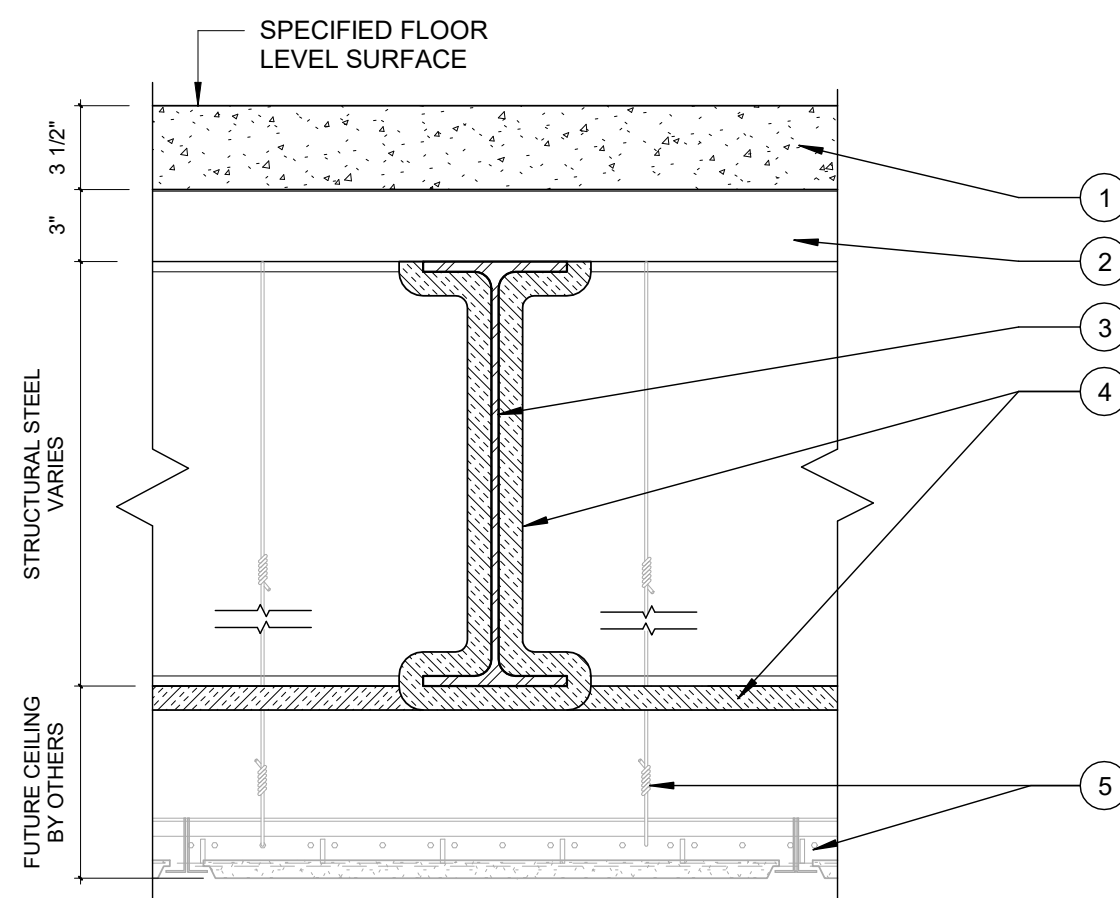


FC-2

- FLOOR/CEILING ASSEMBLY - 1-HR RATING**
 U.L. RATING = D902 (FOR CONCRETE FLOOR)
 (3-1/2" THICKNESS REQUIRED, THICKENED FOR ACOUSTICAL PURPOSES)
 SPRAY FIREPROOFING FOR STEEL - 1-HR RATED
1. **CONCRETE FLOOR** -- 6-1/2" NORMAL WEIGHT CONCRETE (SEE STRUCTURAL FOR REINFORCEMENT)
 2. **METAL DECK** -- GALVANIZED COMPOSITE METAL DECK (SEE STRUCTURAL)
 3. **STEEL BEAM** -- SEE STRUCTURAL
 4. **SPRAY APPLIED FIRE RESISTIVE MATERIALS** -- 1-HR RATING PER MANUFACTURERS INSTRUCTION
 5. **FINISHED CEILING SYSTEM** -- INSTALLED BY FUTURE TENANT

7 FLOOR/CEILING ASSEMBLY - 1-HR RATED - AT PENTHOUSE

1 1/2" = 1'-0"

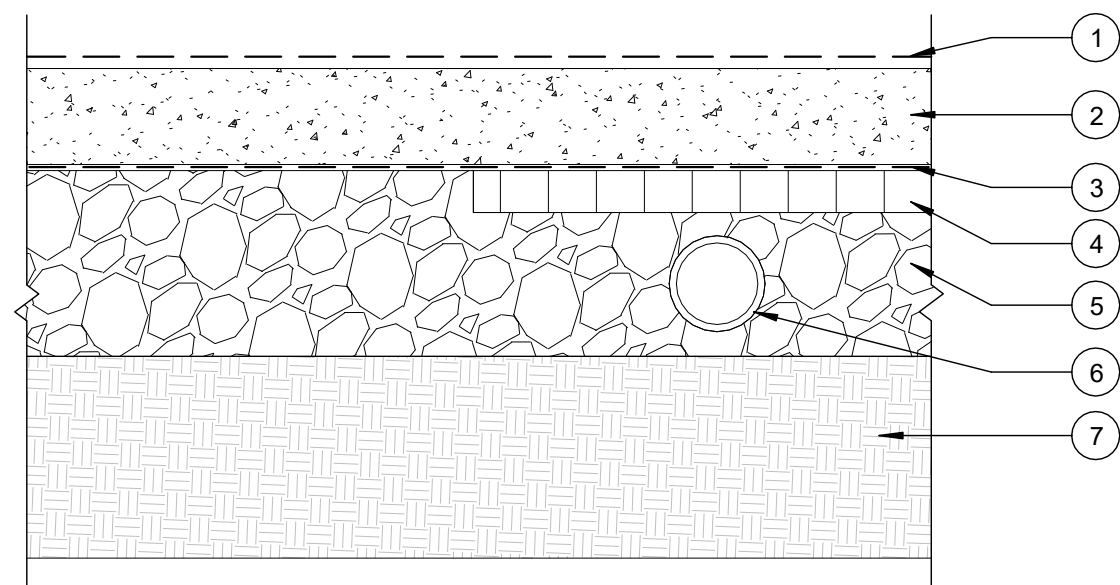


FC-1

- FLOOR/CEILING ASSEMBLY - 1-HR RATING**
 U.L. RATING = D902 (FOR CONCRETE FLOOR)
 SPRAY FIREPROOFING FOR STEEL - 1-HR RATED
1. **CONCRETE FLOOR** -- 3-1/2" NORMAL WEIGHT CONCRETE REINFORCED WITH 6X6 - W2.9 x W2.9. (SEE STRUCTURAL)
 2. **METAL DECK** -- 3"-18 GAGE GALVANIZED COMPOSITE METAL DECK (SEE STRUCTURAL)
 3. **STEEL BEAM** -- SEE STRUCTURAL
 4. **SPRAY APPLIED FIRE RESISTIVE MATERIALS** -- 1-HR RATING PER MANUFACTURERS INSTRUCTION
 5. **FINISHED CEILING SYSTEM** -- INSTALLED BY FUTURE TENANT

6 FLOOR/CEILING ASSEMBLY - 1-HR RATED

1 1/2" = 1'-0"

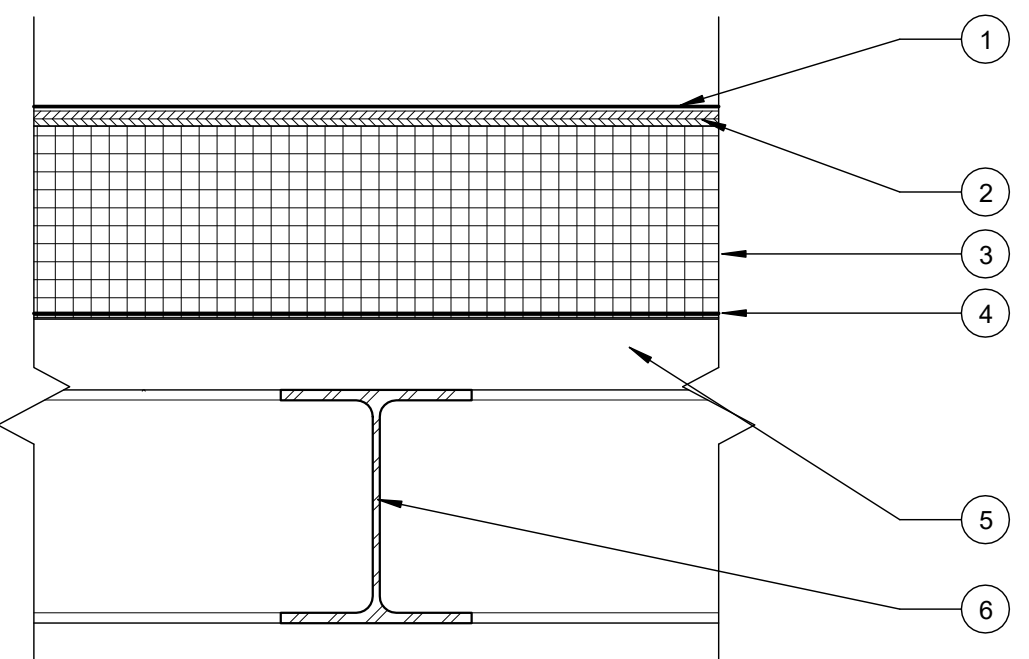


F1

- FLOOR SYSTEM - SLAB ON GRADE**
1. **FINISH FLOOR** - NOT SHOWN, INSTALLED BY FUTURE TENANT
 2. **CONCRETE SLAB** - SEE STRUCTURAL FOR STRENGTH, THICKNESS AND REINFORCEMENT SPECIFICATIONS
 3. **VAPOR BARRIER** - POLYETHYLENE VAPOR BARRIER SHEET WITH SEAMS OVERLAPPED AND TAPED - SEE SPECIFICATIONS
 4. **RIGID INSULATION** - 4'-0" OF 2" RIGID INSULATION CONTINUOUS AROUND PERIMETER
 5. **6" COARSE AGGREGATE**
 6. **4" PERFORATED PVC RADON PIPE** - SEE PLUMBING PLANS FOR ADDITIONAL INFORMATION
 7. **COMPACTED STRUCTURAL** - SEE STRUCTURALS FOR DEPTH AND GRADATION

5 FLOOR ASSEMBLY - SLAB ON GRADE

1 1/2" = 1'-0"

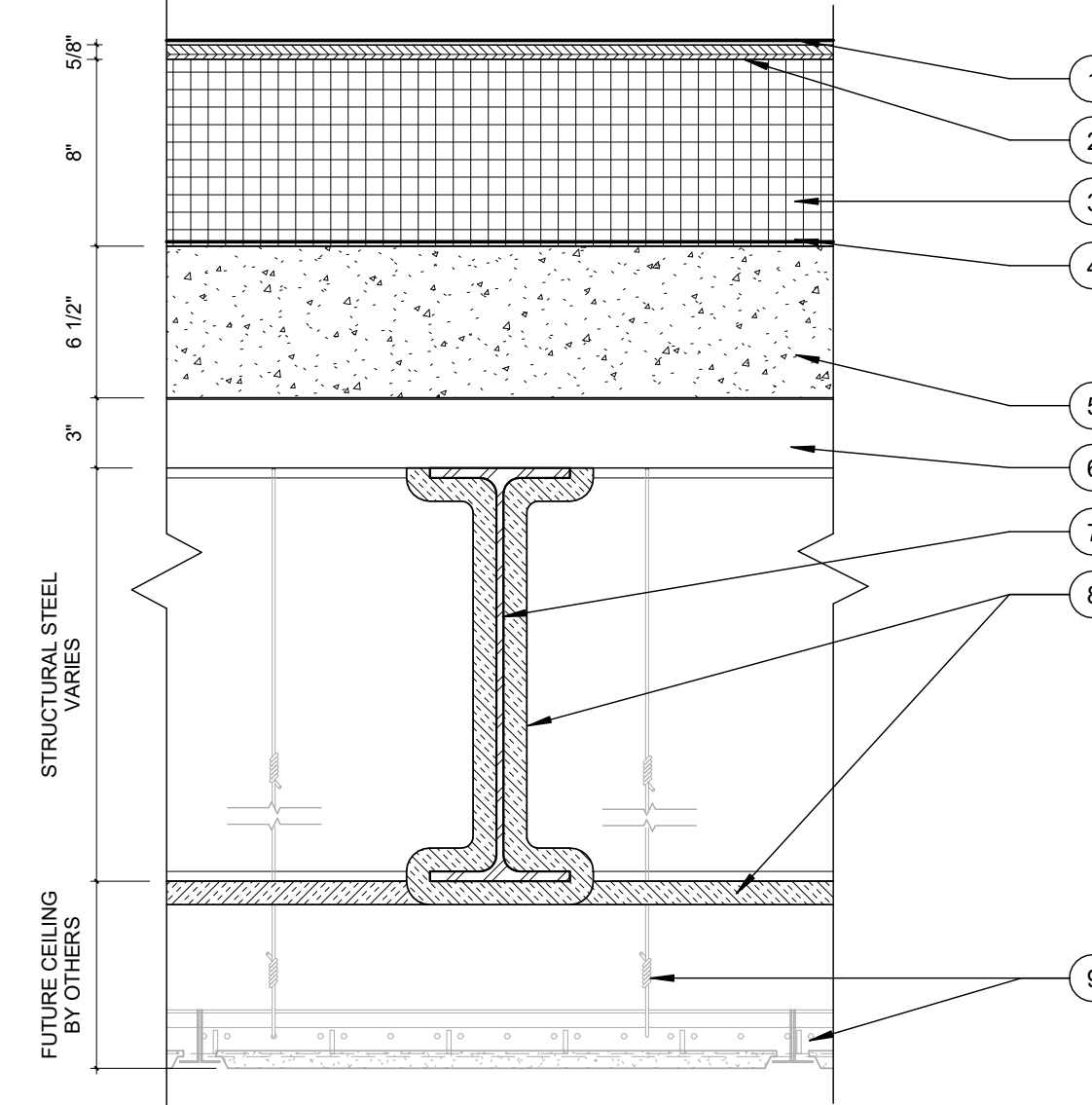


RC-4

- ROOF/CEILING ASSEMBLY**
1. **ROOF COVERING** -- .060" EPDM FULLY ADHERED ROOF MEMBRANE
 2. **ROOF PROTECTION BOARD** -- 5/8" DENSDECK
 3. **INSULATION** -- 8" RIGID INSULATION
 4. **VAPOR BARRIER** -- FULLY ADHERED VAPOR BARRIER
 5. **METAL DECK** -- COMPOSITE METAL DECK (SEE STRUCTURAL)
 6. **STEEL BEAM** -- SEE STRUCTURAL

4 ROOF/CEILING ASSEMBLY - PENTHOUSE ROOF

1 1/2" = 1'-0"

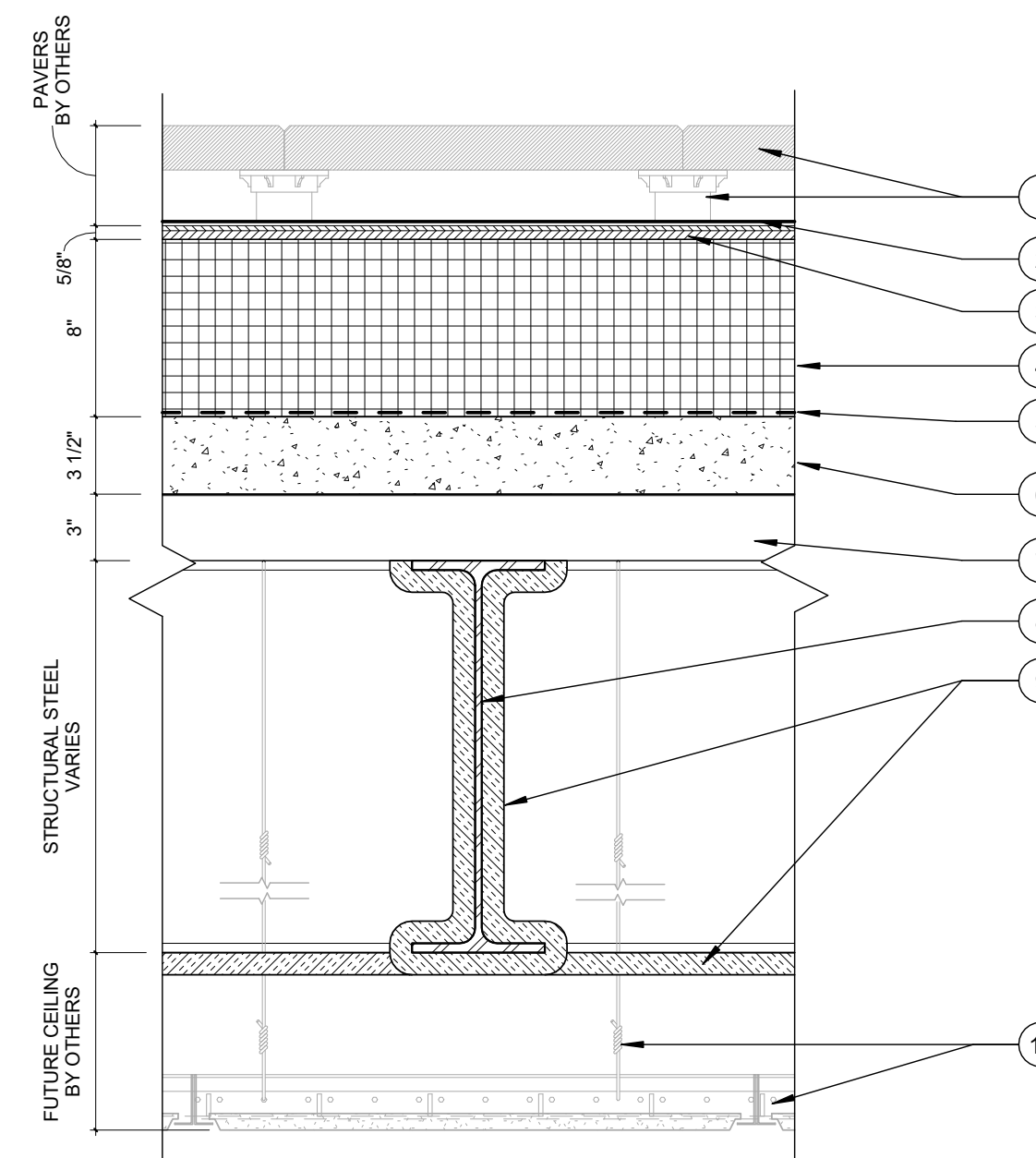


RC-3

- FLOOR/CEILING ASSEMBLY - 1-HR RATING**
 U.L. RATING = D902 (FOR CONCRETE FLOOR)
 (3-1/2" THICKNESS REQUIRED, THICKENED FOR ACOUSTICAL PURPOSES)
 SPRAY FIREPROOFING FOR STEEL - 1-HR RATED
1. **ROOF COVERING** -- .060" EPDM FULLY ADHERED ROOF MEMBRANE
 2. **ROOF PROTECTION BOARD** -- 5/8" DENSDECK
 3. **INSULATION** -- 8" RIGID INSULATION
 4. **VAPOR BARRIER** -- FULLY ADHERED VAPOR BARRIER
 5. **CONCRETE FLOOR** -- 6-1/2" NORMAL WEIGHT CONCRETE (SEE STRUCTURAL FOR REINFORCEMENT)
 6. **METAL DECK** -- GALVANIZED COMPOSITE METAL DECK (SEE STRUCTURAL)
 7. **STEEL BEAM** -- SEE STRUCTURAL
 8. **SPRAY APPLIED FIRE RESISTIVE MATERIALS** -- 1-HR RATING PER MANUFACTURERS INSTRUCTION
 9. **FINISHED CEILING SYSTEM** -- INSTALLED BY FUTURE TENANT

3 ROOF/CEILING ASSEMBLY - 1-HR RATED - AT CHILLERS

1 1/2" = 1'-0"

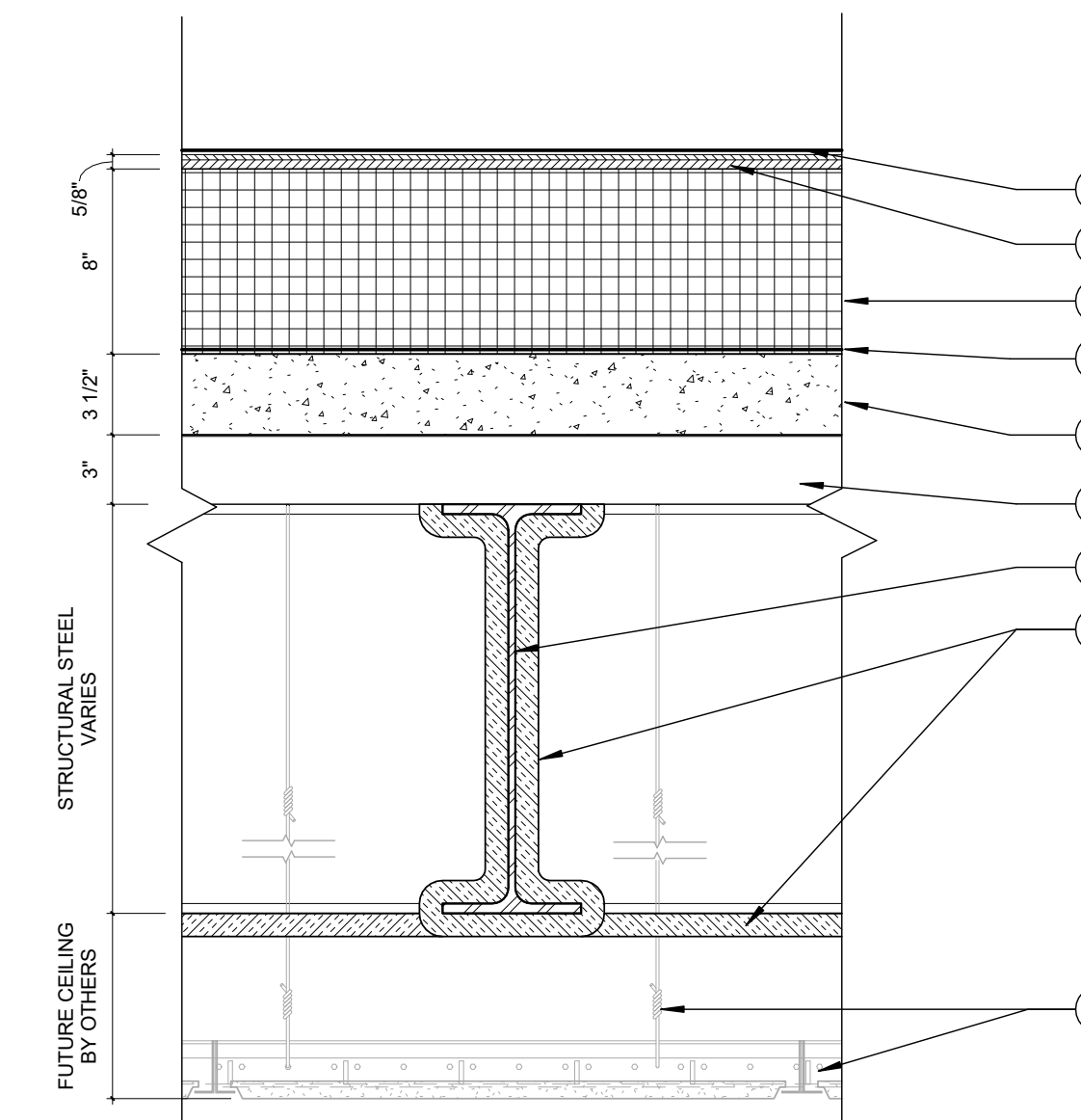


RC-2

- ROOF/CEILING ASSEMBLY - 1-HR RATING**
 U.L. RATING = D902 (FOR CONCRETE FLOOR)
 SPRAY FIREPROOFING FOR STEEL - 1-HR RATED
1. **PAVER AND PEDESTAL SYSTEM** -- INSTALLED BY FUTURE TENANT
 2. **ROOF COVERING** -- .060" EPDM FULLY ADHERED ROOF MEMBRANE. EPDM SLIP SHEET UNDER FUTURE PEDESTALS
 3. **ROOF PROTECTION BOARD** -- 5/8" DENSDECK
 4. **INSULATION** -- 8" RIGID INSULATION
 5. **VAPOR BARRIER** -- FULLY ADHERED VAPOR BARRIER
 6. **CONCRETE** -- 3-1/2" NORMAL WEIGHT CONCRETE REINFORCED WITH 6X6 - W2.9 x W2.9. (SEE STRUCTURAL)
 7. **METAL DECK** -- 3"-18 GAGE GALVANIZED COMPOSITE METAL DECK (SEE STRUCTURAL)
 8. **STEEL BEAM** -- SEE STRUCTURAL
 9. **SPRAY APPLIED FIRE RESISTIVE MATERIALS** -- 1-HR RATING PER MANUFACTURERS INSTRUCTION
 10. **FINISHED CEILING SYSTEM** -- INSTALLED BY FUTURE TENANT

2 ROOF/CEILING ASSEMBLY - 1-HR RATED / FUTURE PAVERS

1 1/2" = 1'-0"

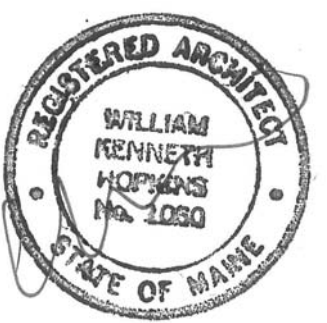


RC-1

- ROOF/CEILING ASSEMBLY - 1-HR RATING**
 U.L. RATING = D902 (FOR CONCRETE FLOOR)
 SPRAY FIREPROOFING FOR STEEL - 1-HR RATED
1. **ROOF COVERING** -- .060" EPDM FULLY ADHERED ROOF MEMBRANE
 2. **ROOF PROTECTION BOARD** -- 5/8" DENSDECK
 3. **INSULATION** -- 8" RIGID INSULATION
 4. **VAPOR BARRIER** -- FULLY ADHERED VAPOR BARRIER
 5. **CONCRETE** -- 3-1/2" NORMAL WEIGHT CONCRETE REINFORCED WITH 6X6 - W2.9 x W2.9. (SEE STRUCTURAL)
 6. **METAL DECK** -- 3"-18 GAGE GALVANIZED COMPOSITE METAL DECK (SEE STRUCTURAL)
 7. **STEEL BEAM** -- SEE STRUCTURAL
 8. **SPRAY APPLIED FIRE RESISTIVE MATERIALS** -- 1-HR RATING PER MANUFACTURERS INSTRUCTION
 9. **FINISHED CEILING SYSTEM** -- INSTALLED BY FUTURE TENANT

1 ROOF/CEILING ASSEMBLY - 1-HR RATED

1 1/2" = 1'-0"



Prepared For:
0 Hancock Street
 LLC
 P.O. Box 7486
 Portland, ME 04112

Consultant:

Architect:
ARCHETYPE
 architects
 48 Union Wharf Portland, Maine 04101
 (207) 772-6022 ARCHETYPE@ARCHETYPEPA.COM

Project:
0 Hancock Street
 1 Hancock Street
 Portland, Maine

Revisions:
 Issued For Permit - 10/23/2017

Date: August 2017
 Scale: 1 1/2" = 1'-0"
Floor, Ceiling, Roof Types

A4.02