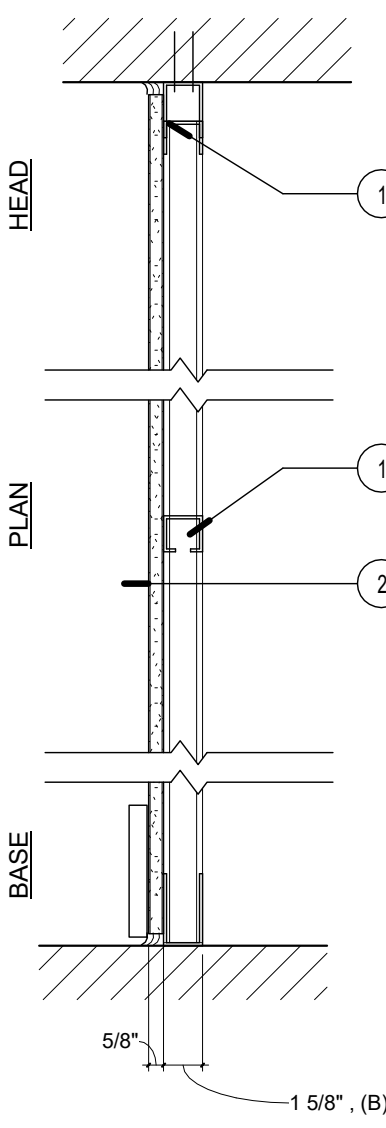


LABEL 1 HR W04A
3 5/8"

1 HR NON-BEARING PARTITION
DESIGN NUMBER - U419
SOUND - N/A

1. STUDS - 1-5/8" METAL STUDS, MAX STUD SPACING 24" O.C.
2. INTERIOR WALLBOARD - (1) ONE LAYER 5/8" GYPSUM WALLBOARD APPLIED PARALLEL OR AT RIGHT ANGLES TO STUDS.
3. CAULKING AND SEALANTS - A BEAD OF ACOUSTICAL SEALANT APPLIED AROUND THE PARTITION PERIMETER FOR SOUND CONTROL, BOTH SIDES OF WALL.
4. BLOCKING - (NOT SHOWN) BLOCKING AS NEEDED
5. TAPE AND COMPOUND - (NOT SHOWN) VINYL DRY OR PREMIXED JOINT COMPOUND, APPLIED IN TWO COATS TO JOINTS AND SCREW HEADS, PAPER TAPE, 2 IN. WIDE, EMBEDDED IN FIRST LAYER OF COMPOUND OVER ALL JOINTS.
6. TRIM - (N.I.C.) BY FUTURE TENANT

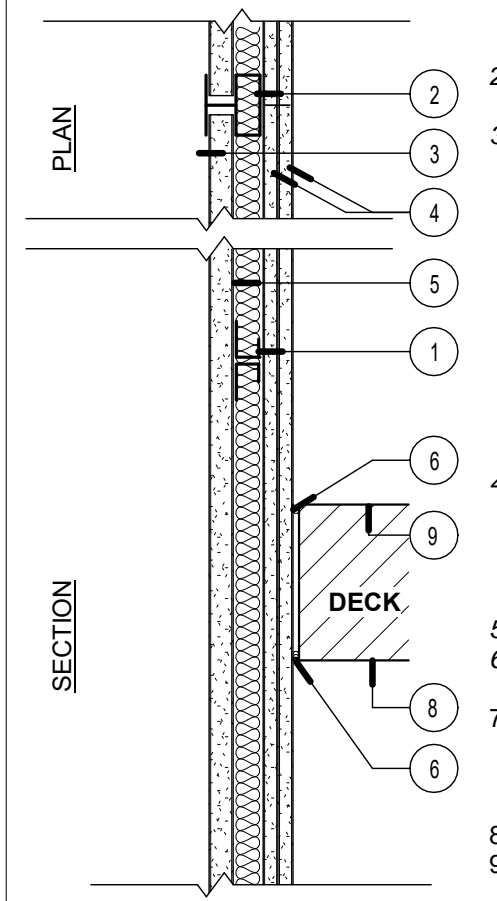


8 | WALL 08 - INTERIOR FURRING WALL
1 1/2" = 1'-0"

LABEL 2 HR W06

2 HR NON-BEARING SHAFT WALL
DESIGN NUMBER - UL - U415 SYSTEM B
48 STC SOUND - RAL-OT4-022

1. FLOOR, SIDE AND CEILING RUNNER - "J" - SHAPED RUNNER, MIN. 4 IN DEEP, WITH UNEQUAL LEGS OF 1 IN AND 2 IN, FABRICATED FROM MIN 24 MSG GALV. STL. RUNNERS POSITIONED WITH SHORT LEG TOWARD FINISHED SIDE OF WALL. RUNNERS ATTACHED TO STRUCTURAL SUPPORTS WITH STEEL FASTENERS LOCATED NOT GREATER THAN 2 IN FROM ENDS AND NOT GREATER THAN 24 IN. O.C.
2. STEEL STUDS - "C"-H SHAPED STUDS, MIN 2 1/2" DEEP, FABRICATED FROM MIN 25 MSG GALV STL AND SPACED 24" O.C.
3. GYPSUM BOARD - GYPSUM LINER PANELS, NOM. 1 IN THICK, 24 IN WIDE. VERTICAL EDGES INSERTED IN "H" PORTION OF "C"-H STUDS. FREE EDGES OF PANELS ATTACHED TO LONG LEG OF THE VERTICAL "J" - RUNNERS WITH 1 5/8 IN LONG TYPE S STEEL SCREWS SPACED 12 IN. O.C. AND ATTACH THE FINISH LAYER WITH 1 5/8 IN TYPE S STEEL SCREWS SPACED 12" O.C.
4. SOUND BATT - MINERAL WOOL INSULATION BATTS.
5. SEALANT - UL AND STC LISTED SEALANT FULL PERIMETER BOTH SIDES.
6. TAPE AND COMPOUND - (ADDED/NOT SHOWN) - VINYL DRY OR PREMIXED JOINT COMPOUND, APPLIED IN TWO COATS TO JOISTS AND SCREW HEADS, PAPER TAPE, 2 IN. WIDE, EMBEDDED IN FIRST LAYER OF COMPOUND OVER ALL JOINTS.
7. UNDERSIDE OF STRUCTURE
8. TOP OF STRUCTURE
9. DECK



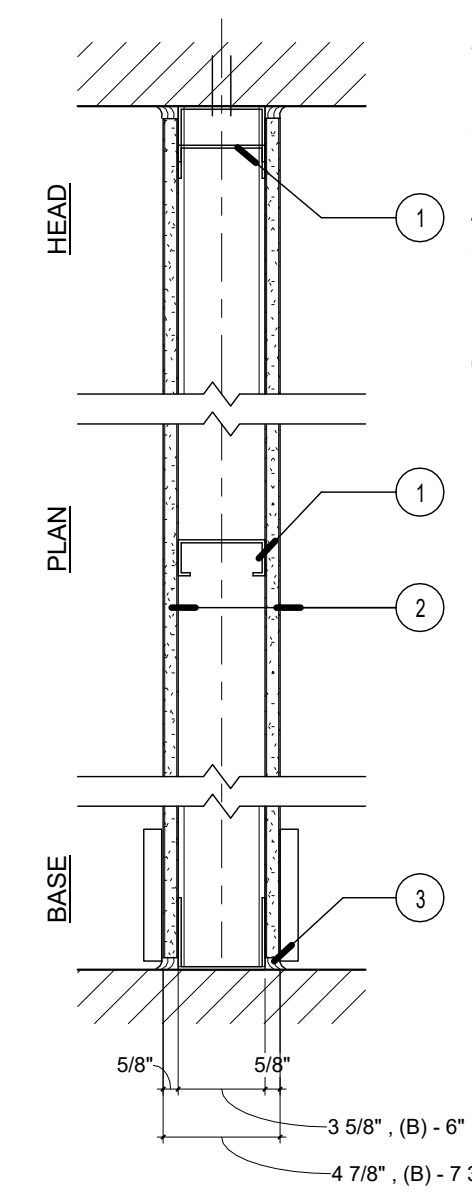
NOTE: FOR SHAFTS CONNECTING 4 OR MORE STORIES

6 | WALL 06 - 2 HR SHAFT WALL ASSEMBLY
1 1/2" = 1'-0"

LABEL 1 HR W04A W04B
3 5/8" 6"

NON-BEARING PARTITION
DESIGN NUMBER - U419
SOUND - N/A

1. STUDS - 3-5/8" METAL STUDS, MAX STUD SPACING 24" O.C.
2. NOTE: WALL TYPE 'B' USES 6" STUDS IN PLACE OF 3-5/8" STUDS.
3. INTERIOR WALLBOARD - (1) ONE LAYER 5/8" GYPSUM WALLBOARD APPLIED PARALLEL OR AT RIGHT ANGLES TO STUDS.
4. CAULKING AND SEALANTS - A BEAD OF ACOUSTICAL SEALANT APPLIED AROUND THE PARTITION PERIMETER FOR SOUND CONTROL, BOTH SIDES OF WALL.
5. BLOCKING - (NOT SHOWN) BLOCKING AS NEEDED
6. TAPE AND COMPOUND - (NOT SHOWN) VINYL DRY OR PREMIXED JOINT COMPOUND, APPLIED IN TWO COATS TO JOINTS AND SCREW HEADS, PAPER TAPE, 2 IN. WIDE, EMBEDDED IN FIRST LAYER OF COMPOUND OVER ALL JOINTS.
7. TRIM - (N.I.C.) BY FUTURE TENANT

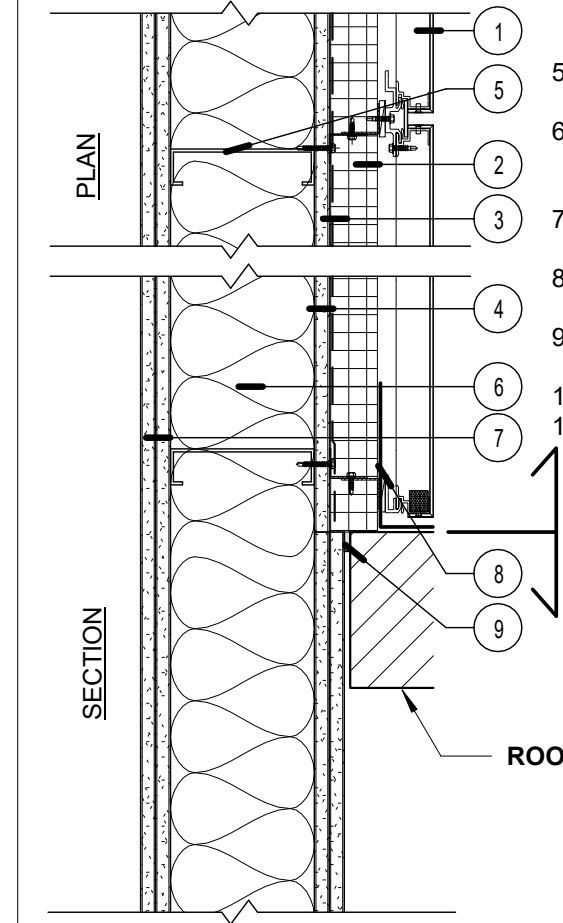


4 | WALL 04A&B - INTERIOR PARTITION
1 1/2" = 1'-0"

LABEL 2 HR W02

2 HR NON-BEARING PARTITION/SHAFT WALL
DESIGN NUMBER - U411
SOUND - N/A

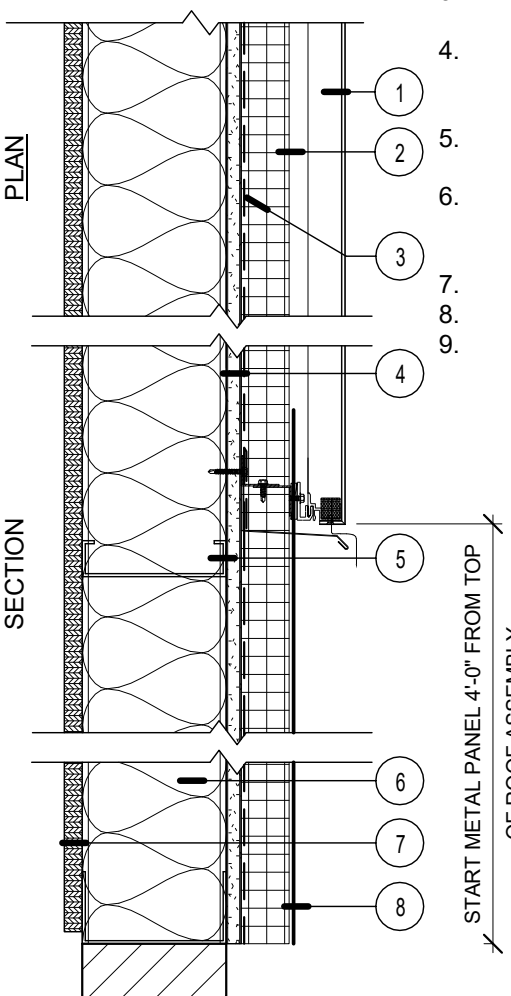
1. EXTERIOR SIDING - METAL PANEL SYSTEM
2. INSULATION - 2" OF CONTINUOUS POLY-ISO INSULATION.
3. AIR/MOISTURE BARRIER - CONTINUOUS BARRIER OVER EXTERIOR SHEATHING. SEE SPECIFICATIONS.
4. EXTERIOR SHEATHING - (1) ONE LAYER 5/8" DENSGLOSS GYPSUM WALLBOARD APPLIED PARALLEL OR AT RIGHT ANGLES TO WALL STUDS.
5. STUDS - 6" METAL STUDS. SEE STRUCTURAL FOR GAUGE AND SPACING.
6. INSULATION - FIBERGLASS BATT WITH UL CLASS AS TO SURFACE BURNING CHARACTERISTICS AND OR FIRE RESISTANCE REQUIRED.
7. INTERIOR WALLBOARD - (2) TWO LAYERS 5/8" GYPSUM WALLBOARD APPLIED VERTICALLY.
8. EPDM - CONTINUOUS EPDM RUN FROM ROOF ASSEMBLY VERTICALLY UP WALL
9. CAULKING AND SEALANTS - FIRE RATED CAULK, TYP. AT ALL FLOOR LEVELS. SEE SPECIFICATIONS.
10. BLOCKING - (NOT SHOWN) BLOCKING AS NEEDED
11. TAPE AND COMPOUND - (NOT SHOWN) VINYL DRY OR PREMIXED JOINT COMPOUND, APPLIED IN TWO COATS TO JOINTS AND SCREW HEADS, PAPER TAPE, 2 IN. WIDE, EMBEDDED IN FIRST LAYER OF COMPOUND OVER ALL JOINTS.



2 | WALL 02 - 2 HR RATED WALL ASSEMBLY-EXTERIOR
1 1/2" = 1'-0"

W07 EXTERIOR WALL - PENTHOUSE
DESIGN NUMBER - N/A

1. EXTERIOR SIDING - METAL PANEL SYSTEM
2. INSULATION - 2" OF CONTINUOUS POLY-ISO INSULATION.
3. AIR/MOISTURE BARRIER - CONTINUOUS BARRIER OVER EXTERIOR SHEATHING. SEE SPECIFICATIONS.
4. EXTERIOR SHEATHING - (1) ONE LAYER 5/8" DENSGLOSS GYPSUM WALLBOARD APPLIED PARALLEL OR AT RIGHT ANGLES TO WALL STUDS.
5. STUDS - 6" METAL STUDS. SEE STRUCTURAL FOR GAUGE AND SPACING.
6. SOUND ATTENUATION BATTS - FIBERGLASS BATT WITH UL CLASS AS TO SURFACE BURNING CHARACTERISTICS AND OR FIRE RESISTANCE REQUIRED.
7. INTERIOR WALL BOARD - (1) ONE LAYER 3/4" PLYWOOD
8. EPDM - RUN EPDM CONTINUOUS UP WALL UNDER METAL PANEL
9. BLOCKING - (NOT SHOWN) BLOCKING AS NEEDED FOR OTHER TRADES. GC TO COORDINATE.

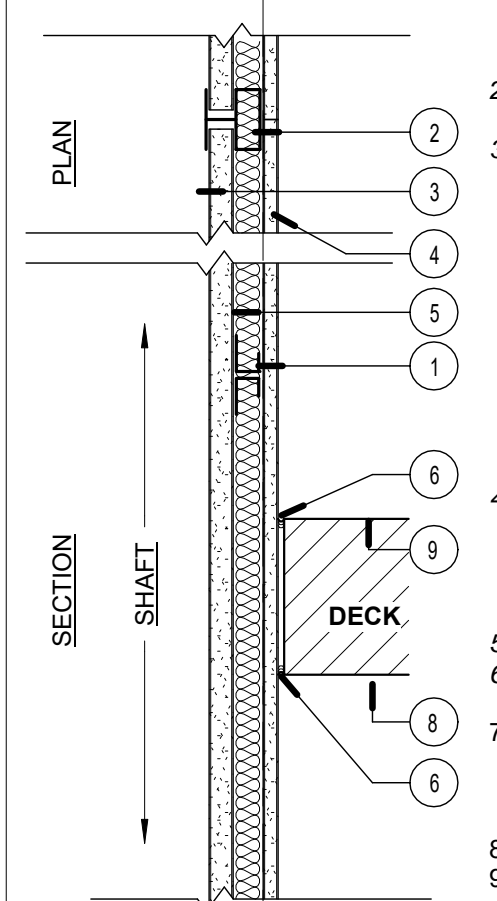


7 | WALL 07 - EXTERIOR WALL - PENTHOUSE
1 1/2" = 1'-0"

LABEL 1 HR W05

1 HR NON-BEARING SHAFT WALL
DESIGN NUMBER - UL - U415 SYSTEM A

1. FLOOR, SIDE AND CEILING RUNNER - "J" - SHAPED RUNNER, MIN. 4 IN DEEP, WITH UNEQUAL LEGS OF 1 IN AND 2 IN, FABRICATED FROM MIN 24 MSG GALV. STL. RUNNERS POSITIONED WITH SHORT LEG TOWARD FINISHED SIDE OF WALL. RUNNERS ATTACHED TO STRUCTURAL SUPPORTS WITH STEEL FASTENERS LOCATED NOT GREATER THAN 2 IN FROM ENDS AND NOT GREATER THAN 24 IN. O.C.
2. STEEL STUDS - "C"-H SHAPED STUDS, MIN 2 1/2" DEEP, FABRICATED FROM MIN 25 MSG GALV STL AND SPACED 24" O.C.
3. GYPSUM BOARD - GYPSUM LINER PANELS, NOM. 1 IN THICK, 24 IN WIDE. VERTICAL EDGES INSERTED IN "H" PORTION OF "C"-H STUDS. FREE EDGES OF PANELS ATTACHED TO LONG LEG OF THE VERTICAL "J" - RUNNERS WITH 1 5/8 IN LONG TYPE S STEEL SCREWS SPACED 12 IN. O.C. AND ATTACH THE FINISH LAYER WITH 1 5/8 IN TYPE S STEEL SCREWS SPACED 12" O.C.
4. SOUND BATT - MINERAL WOOL INSULATION BATTS.
5. SEALANT - UL AND STC LISTED SEALANT FULL PERIMETER BOTH SIDES. TYP. EACH FLOOR LEVEL. SEE SPECIFICATIONS
6. TAPE AND COMPOUND - (ADDED/NOT SHOWN) - VINYL DRY OR PREMIXED JOINT COMPOUND, APPLIED IN TWO COATS TO JOISTS AND SCREW HEADS, PAPER TAPE, 2 IN. WIDE, EMBEDDED IN FIRST LAYER OF COMPOUND OVER ALL JOINTS.
7. UNDERSIDE OF STRUCTURE
8. TOP OF STRUCTURE
9. DECK



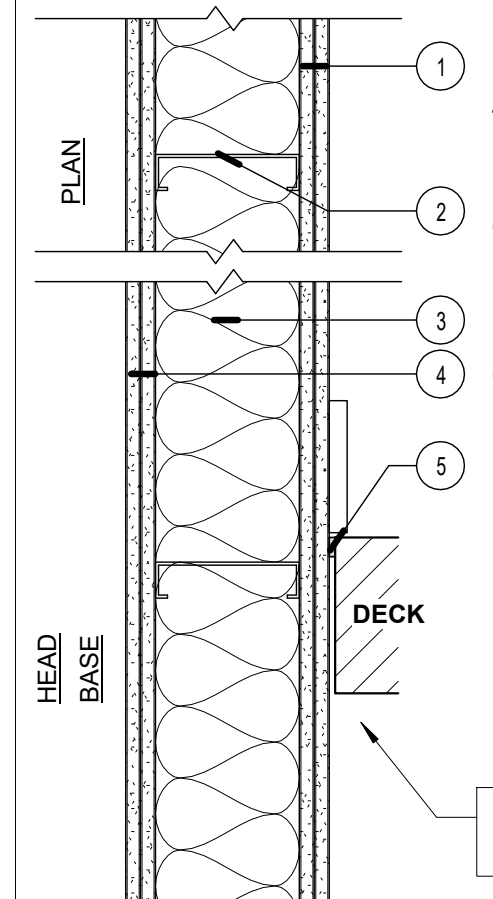
NOTE: FOR SHAFTS CONNECTING 1 - 3 STORIES

5 | WALL 05 - 1 HR SHAFT WALL ASSEMBLY
1 1/2" = 1'-0"

LABEL 2 HR W03

2 HR NON-BEARING PARTITION/SHAFT WALL
DESIGN NUMBER - U411
SOUND - N/A

1. INTERIOR WALLBOARD - (2) TWO LAYERS 5/8" GYPSUM WALLBOARD APPLIED VERTICALLY.
2. STUDS - 6" METAL STUDS. SEE STRUCTURAL FOR GAUGE AND SPACING.
3. INSULATION - (OPTIONAL FOR SOUND) ANY THICKNESS OF MINERAL WOOL BATTS, FILL THE STUD CAVITY.
4. INTERIOR WALLBOARD - (2) TWO LAYERS 5/8" GYPSUM WALLBOARD APPLIED VERTICALLY.
5. CAULKING AND SEALANTS - FIRE RATED CAULK, TYP. AT ALL FLOOR LEVELS. SEE SPECIFICATIONS.
6. BLOCKING - (NOT SHOWN) BLOCKING AS NEEDED
7. TAPE AND COMPOUND - (NOT SHOWN) VINYL DRY OR PREMIXED JOINT COMPOUND, APPLIED IN TWO COATS TO JOINTS AND SCREW HEADS, PAPER TAPE, 2 IN. WIDE, EMBEDDED IN FIRST LAYER OF COMPOUND OVER ALL JOINTS.
8. TRIM - (N.I.C.) BY FUTURE TENANT

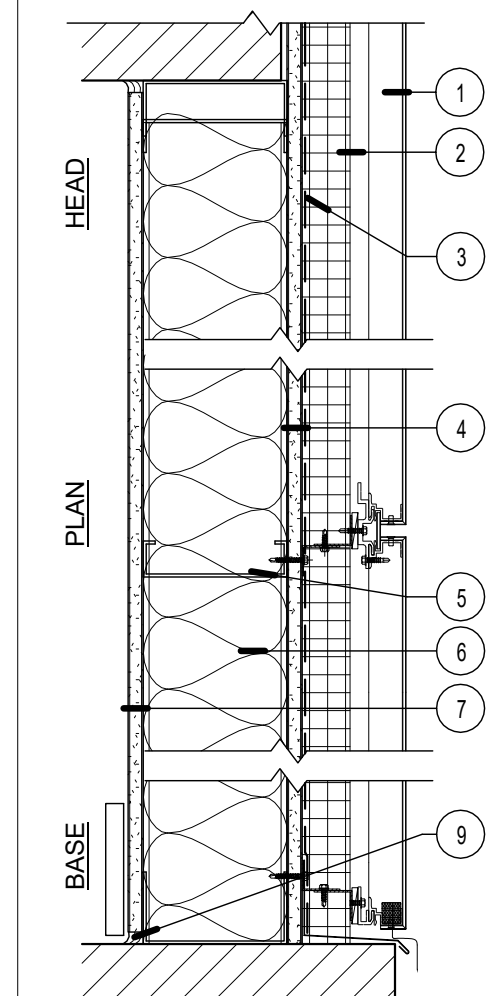


SITUATION WHEN USED AS SHAFTWALL FOR STAIRS AND ELEV.

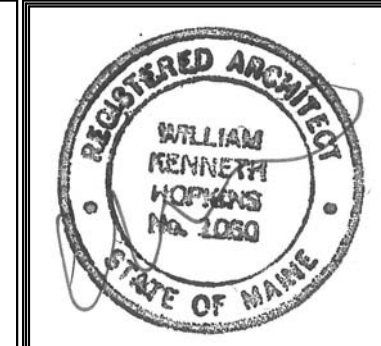
3 | WALL 03 - 2 HR RATED WALL ASSEMBLY
1 1/2" = 1'-0"

W01 EXTERIOR WALL - METAL PANEL
DESIGN NUMBER - N/A

1. EXTERIOR SIDING - ALUCOBOND ALUMINUM COMPOSITE MATERIAL
2. INSULATION - 2" OF CONTINUOUS POLY-ISO INSULATION.
3. AIR/MOISTURE BARRIER - CONTINUOUS BARRIER OVER EXTERIOR SHEATHING. SEE SPECIFICATIONS.
4. EXTERIOR SHEATHING - (1) ONE LAYER 5/8" DENSGLOSS GYPSUM WALLBOARD APPLIED PARALLEL OR AT RIGHT ANGLES TO WALL STUDS.
5. STUDS - 6" METAL STUDS. SEE STRUCTURAL FOR GAUGE AND SPACING.
6. SOUND ATTENUATION BATTS - FIBERGLASS BATT WITH UL CLASS AS TO SURFACE BURNING CHARACTERISTICS AND OR FIRE RESISTANCE REQUIRED.
7. INTERIOR WALL BOARD - (1) ONE LAYER 5/8" GYPSUM WALLBOARD APPLIED PARALLEL OR AT RIGHT ANGLES TO STUDS.
8. JOINT TAPE AND COMPOUND - (NOT SHOWN) VINYL DRY OR PREMIXED JOINT COMPOUND, APPLIED TO JOINTS AND SCREW HEADS, PAPER TAPE, 2" WIDE, EMBEDDED IN FIRST LAYER OF COMPOUND OVER ALL JOINTS.
9. CAULKING AND SEALANTS - A BEAD OF ACOUSTICAL SEALANT APPLIED AROUND THE PARTITION PERIMETER.
10. BLOCKING - (NOT SHOWN) BLOCKING AS NEEDED FOR OTHER TRADES. GC TO COORDINATE.
11. TRIM - (N.I.C.) BY FUTURE TENANT.



1 | WALL 01 - EXTERIOR WALL - METAL PANEL
1 1/2" = 1'-0"



Prepared For:
0 Hancock Street
LLC
Address
City, State

Consultant:
ARCHETYPE
architects
48 Union Wharf Portland, Maine 04101
(207) 772-0022 ARCHETYPE@ARCHETYPEPA.COM

Project:
0 Hancock Street
1 Hancock Street
Portland, Maine

Revisions:
Issued For Permit - 10/23/2017

Date:
August 2017
Scale:
1 1/2" = 1'-0"
Wall Types

A4.00