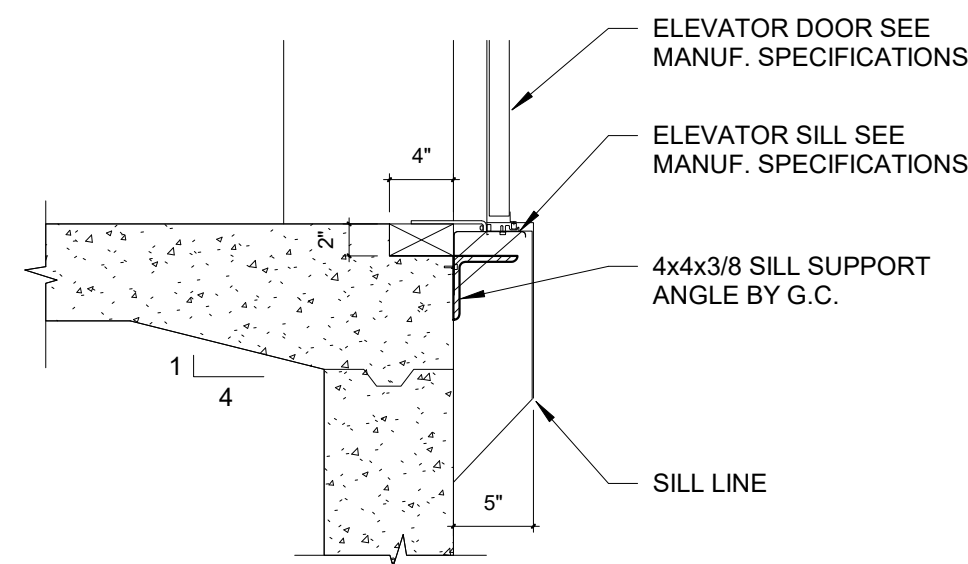
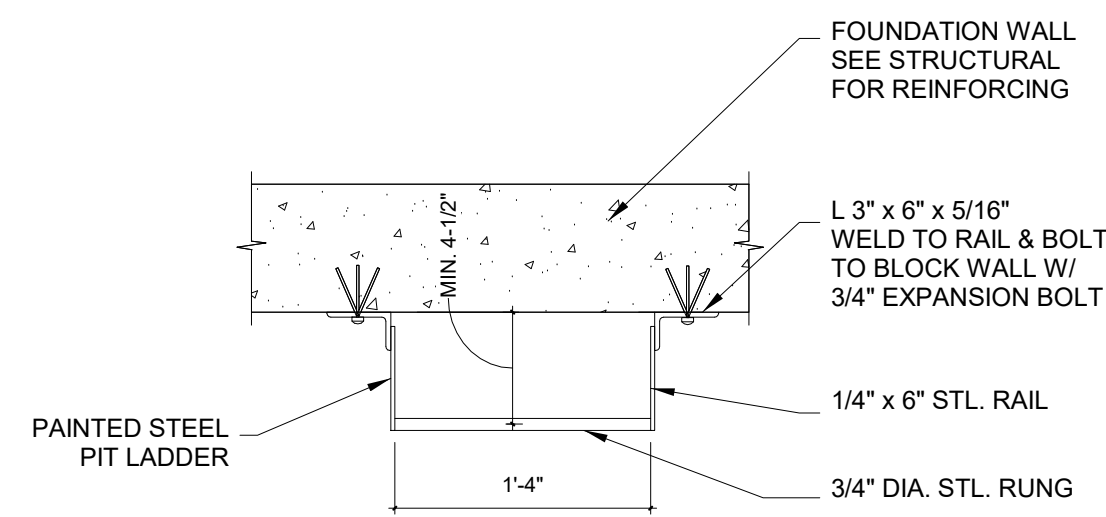


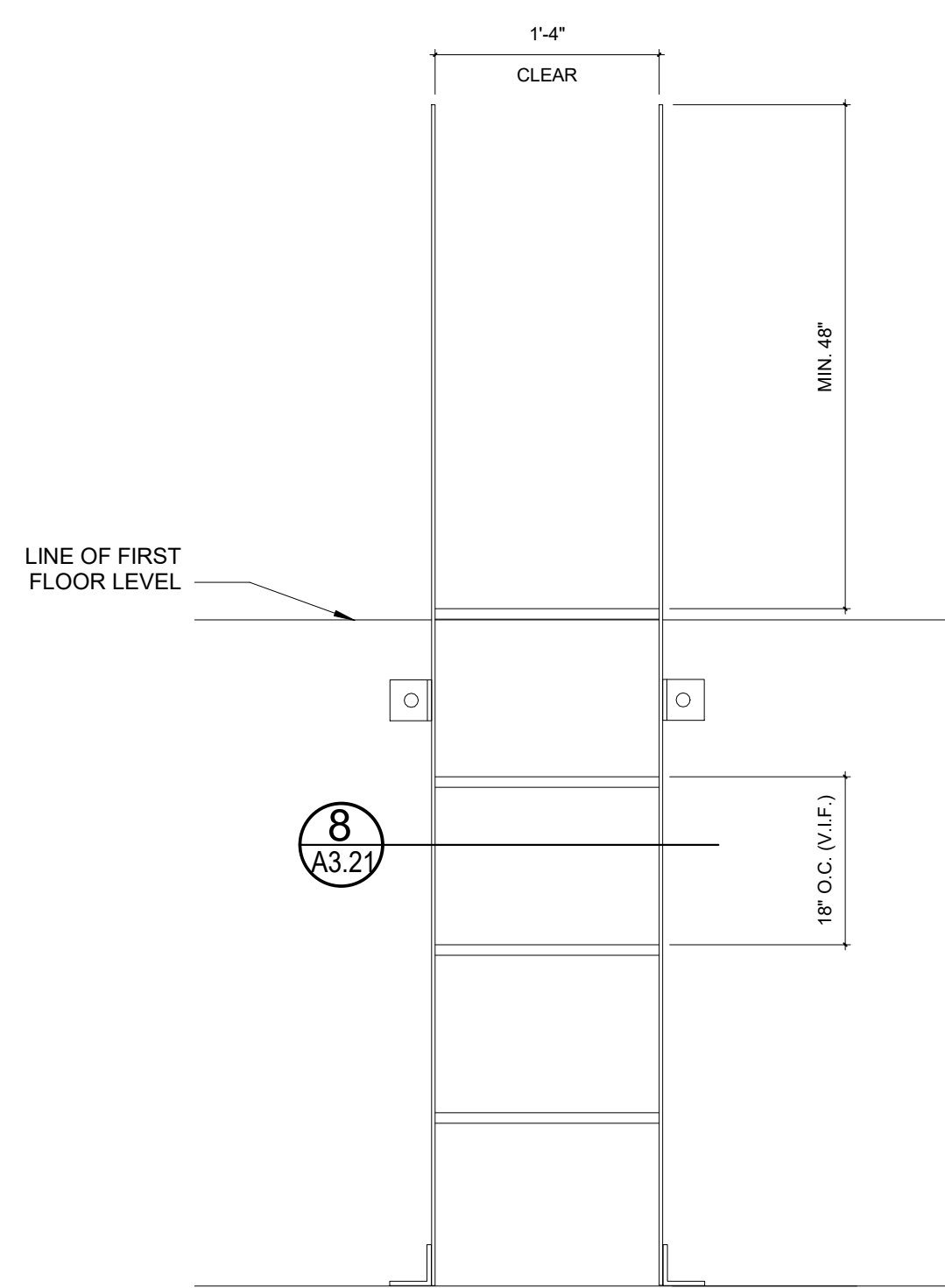
**10** INTERMEDIATE BEAM PROTECTION  
1/2" = 1'-0"



**9** ELEVATOR DOOR AT CONCRETE  
1" = 1'-0"

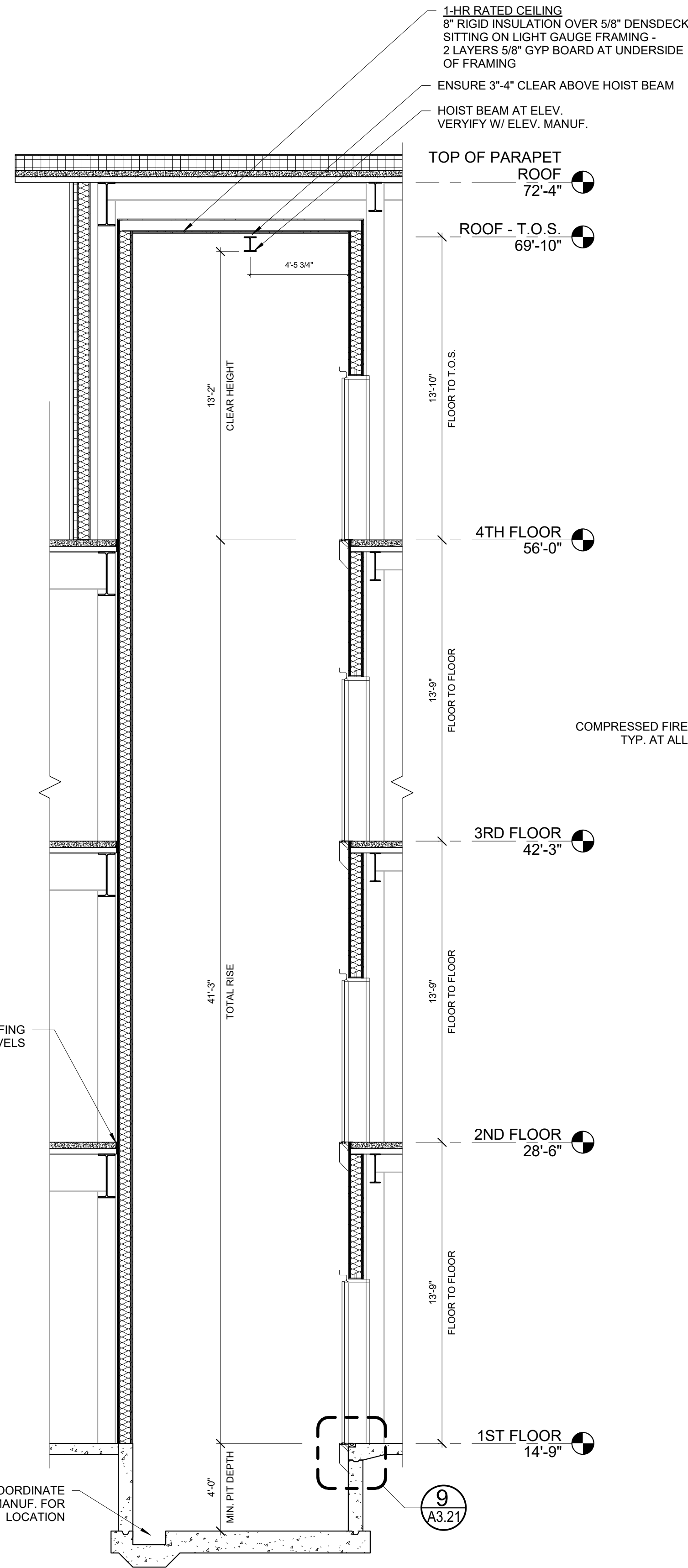


**8** ELEVATOR PIT LADDER PLAN  
1" = 1'-0"

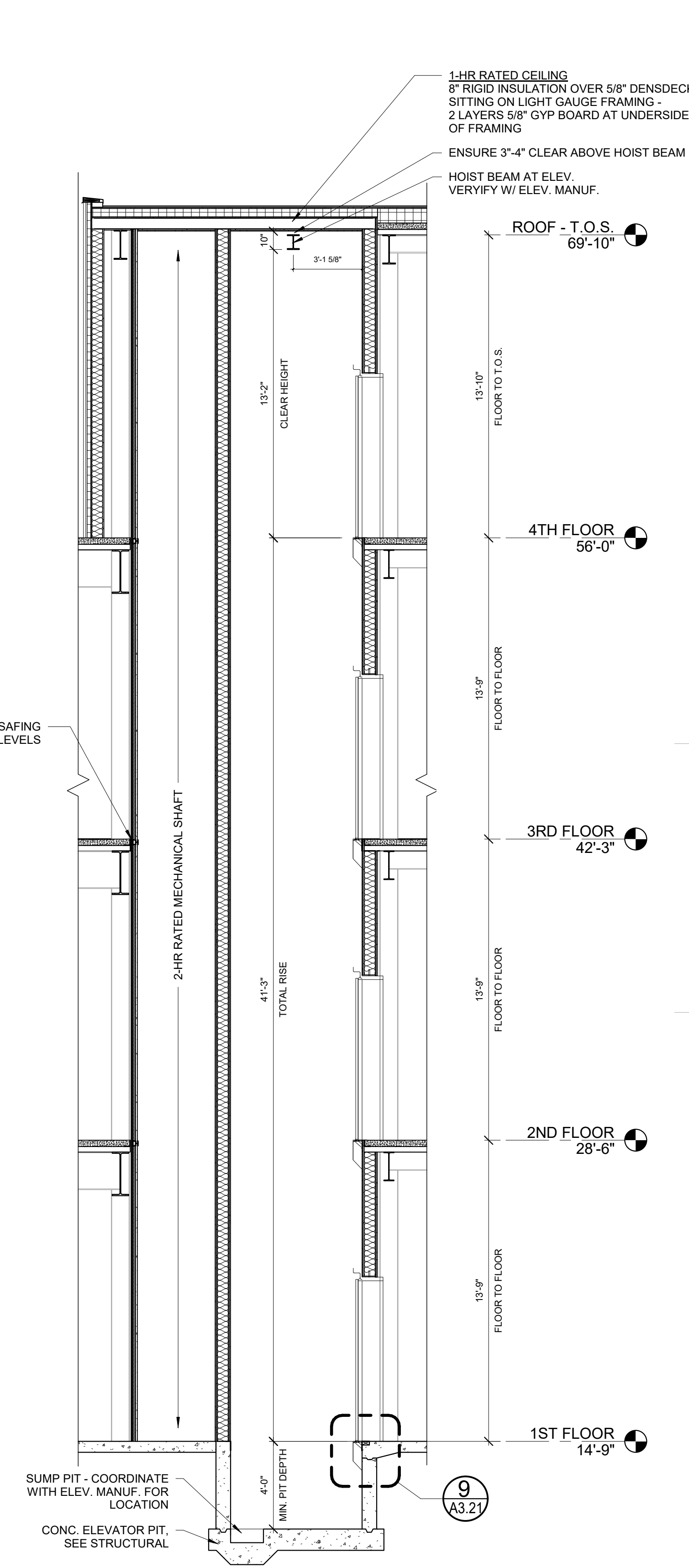


**7** ELEVATOR PIT LADDER ELEVATION  
1" = 1'-0"

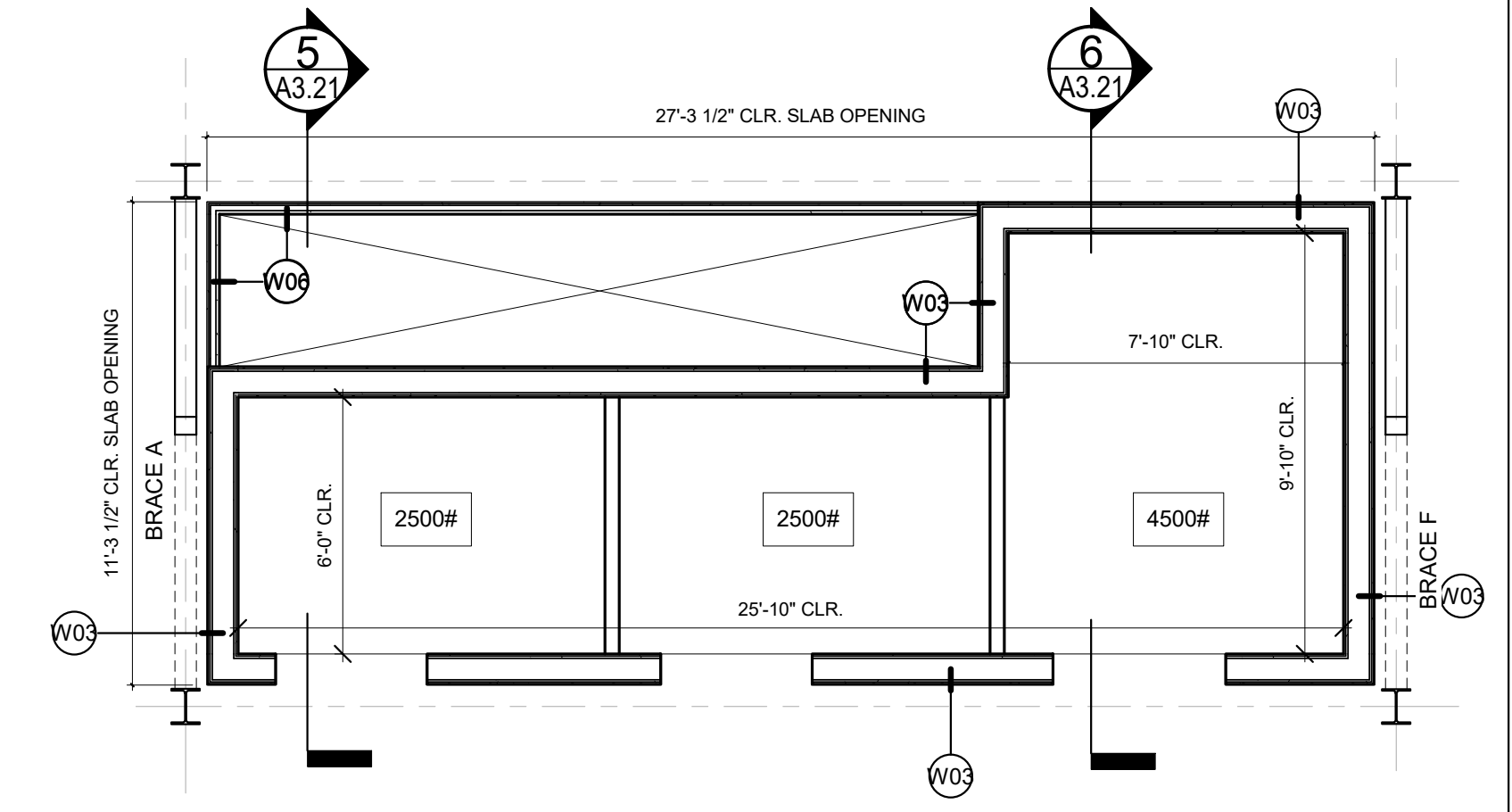
GENERAL NOTE:  
ELEVATOR SHAFT TO BE VENTED PER CODE REQUIREMENTS  
COORDINATE WITH ELEV. MANUFAC. AND LOCAL CODE  
ENFORCEMENT



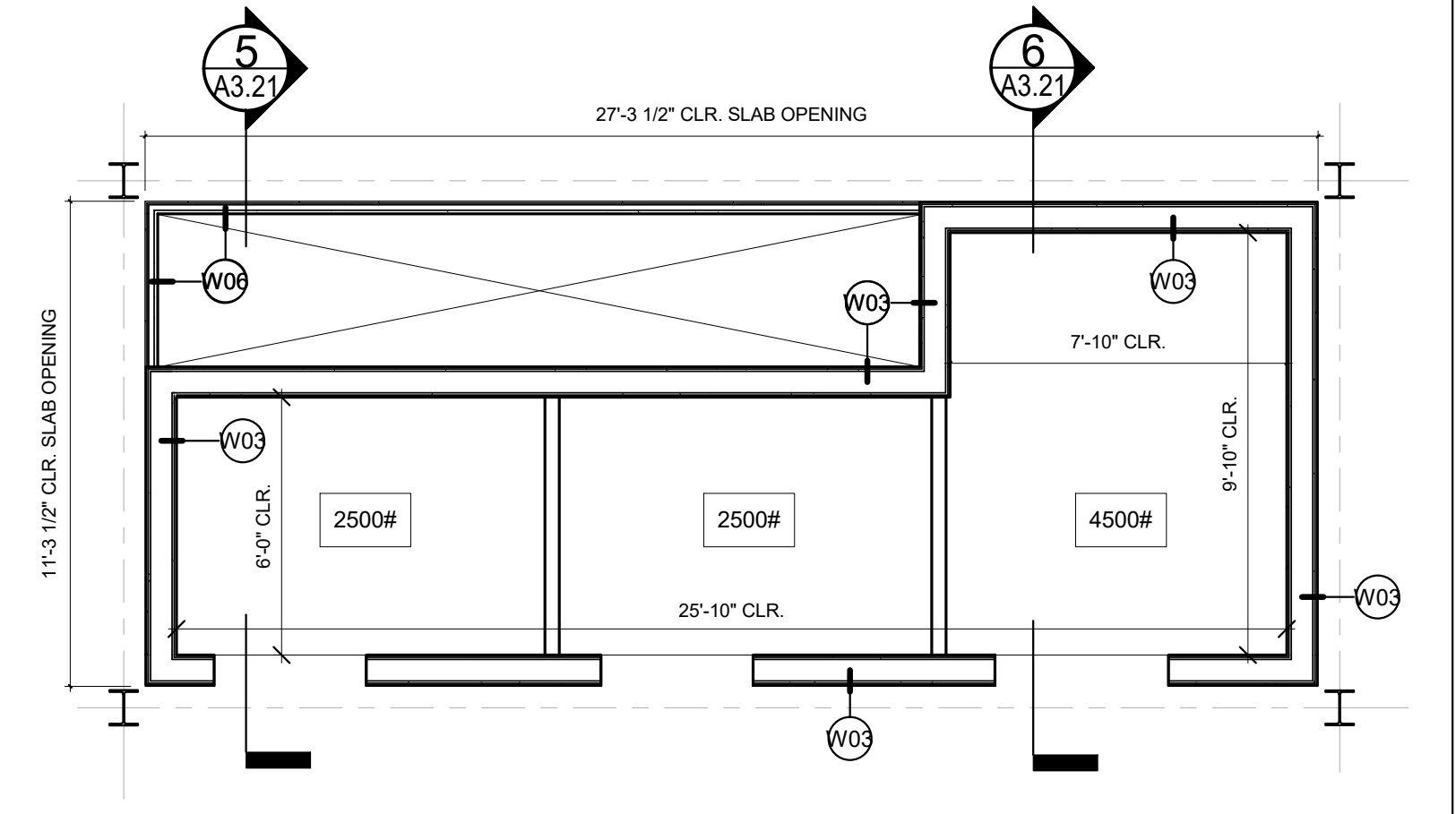
**6** SECTION THROUGH 4500#  
1/4" = 1'-0"



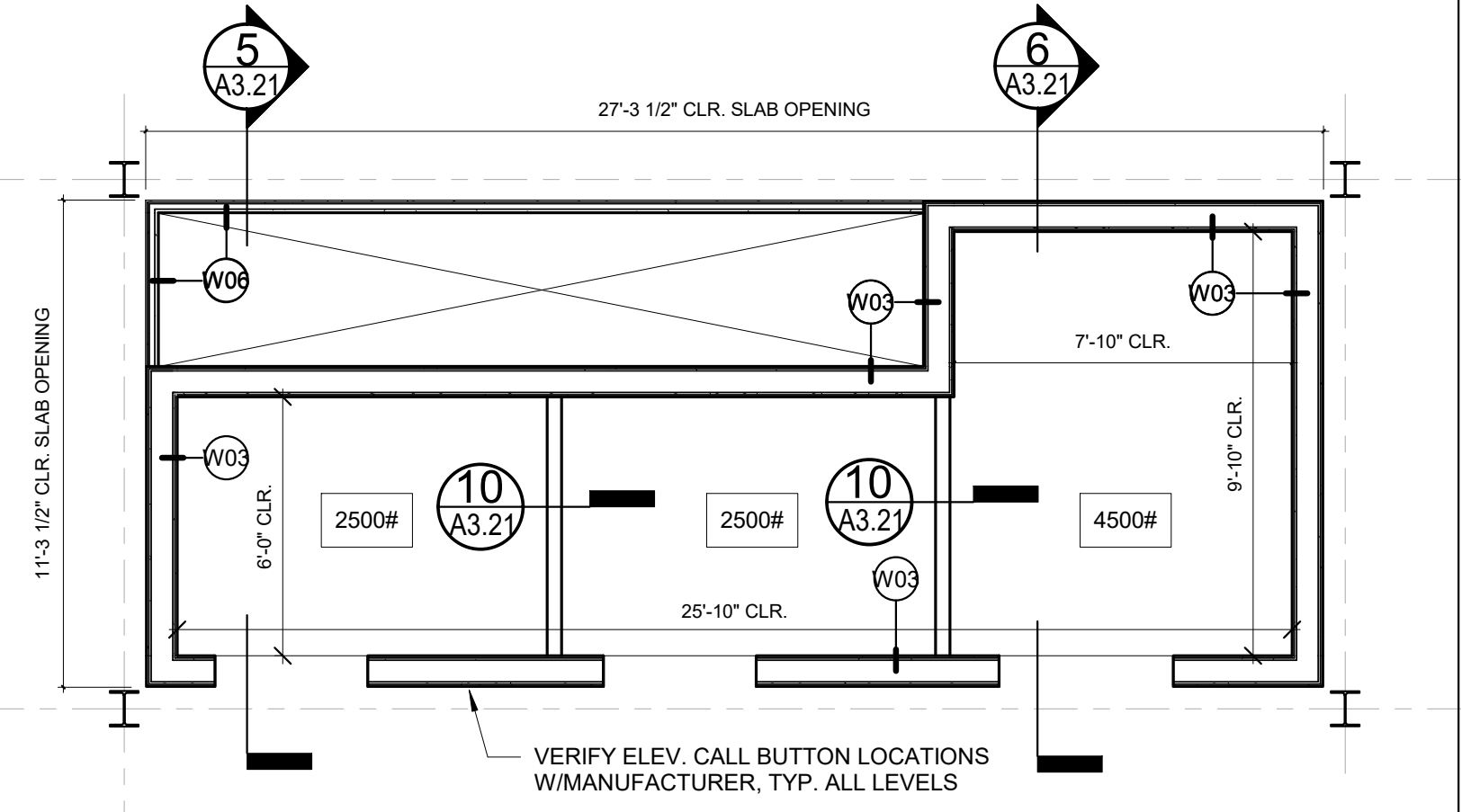
**5** SECTION THROUGH 2500#  
1/4" = 1'-0"



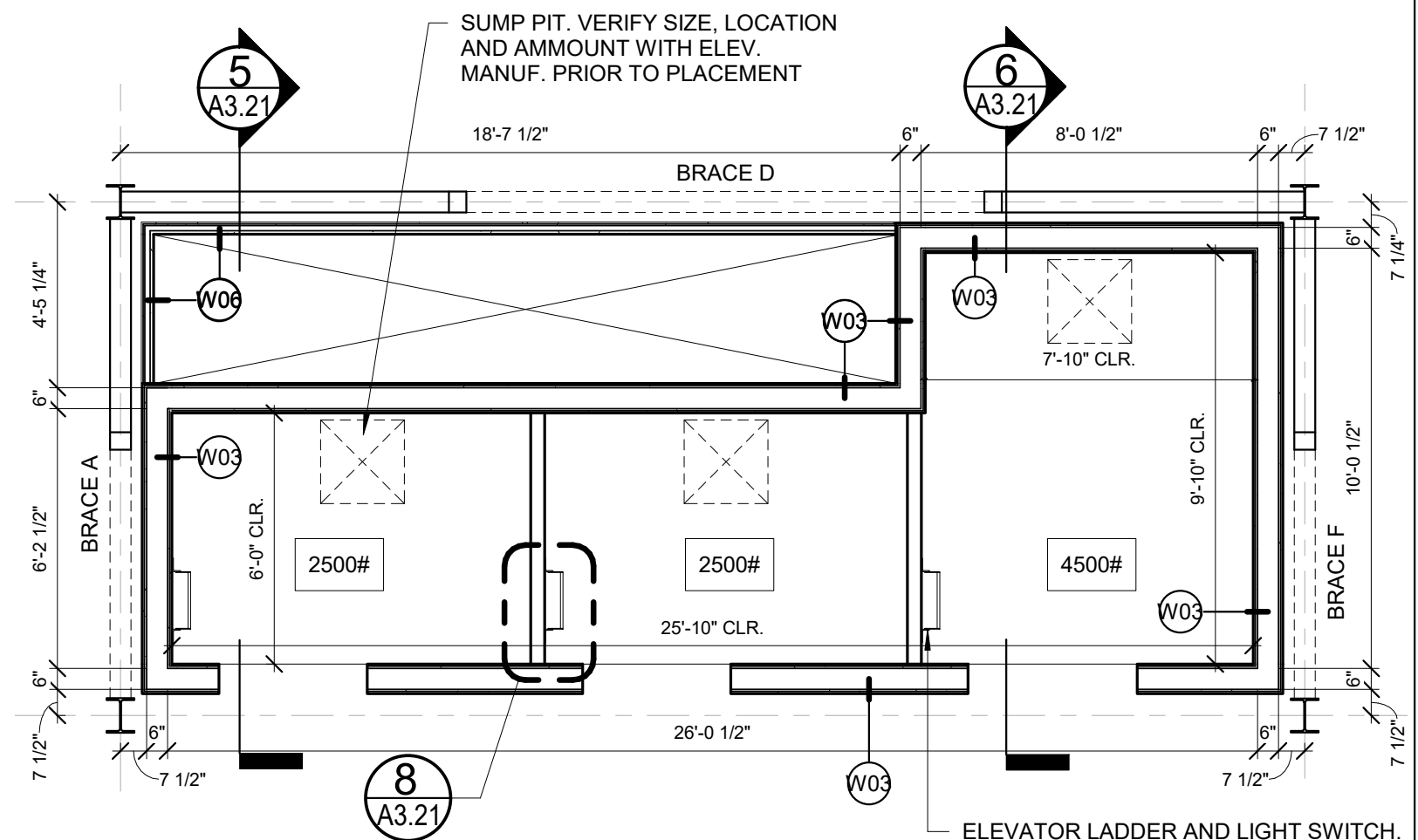
**4** FOURTH FLOOR ELEVATOR PLAN  
1/4" = 1'-0"



**3** THIRD FLOOR ELEVATOR PLAN  
1/4" = 1'-0"



**2** SECOND FLOOR ELEVATOR PLAN  
1/4" = 1'-0"



**1** FIRST FLOOR ELEVATOR PLAN  
1/4" = 1'-0"



Prepared For:  
**0 Hancock Street LLC**  
Address  
City, State

Consultant:  
**ARCHETYPE architects**  
48 Union Wharf Portland, Maine 04101  
(207) 772-6022 ARCHETYPE@ARCHETYPEPA.COM

Project:  
**0 Hancock Street**  
1 Hancock Street  
Portland, Maine

Revisions:  
Issued For Permit - 10/23/2017

Date:  
**August 2017**  
Scale:  
As indicated  
**Elevator Section and Details**

**A3.21**