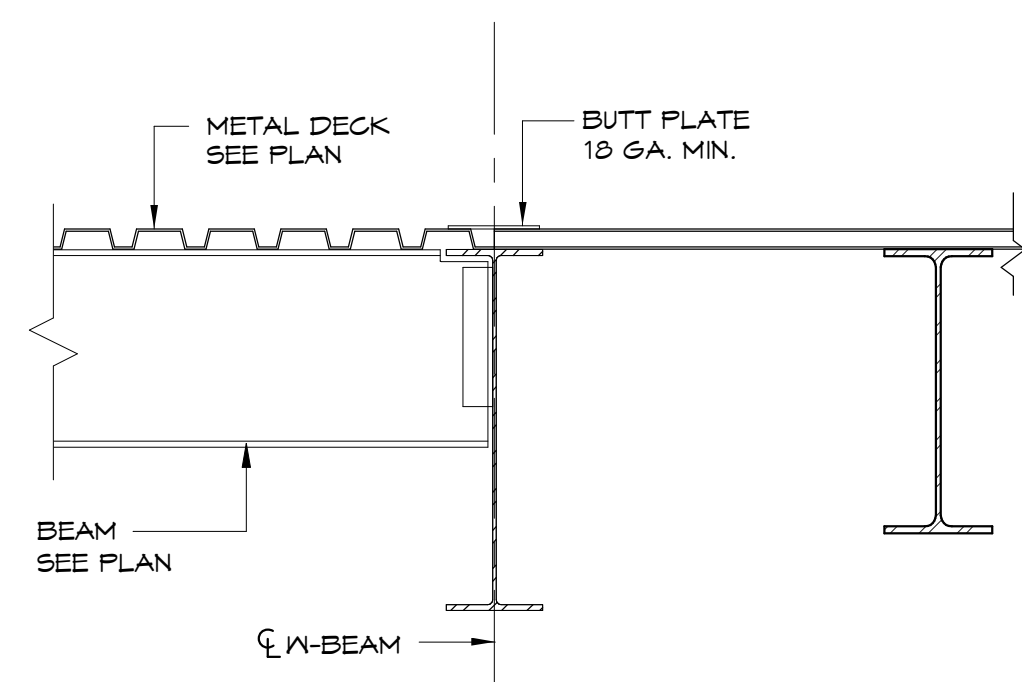


**ROOF CONSTRUCTION**

**A**

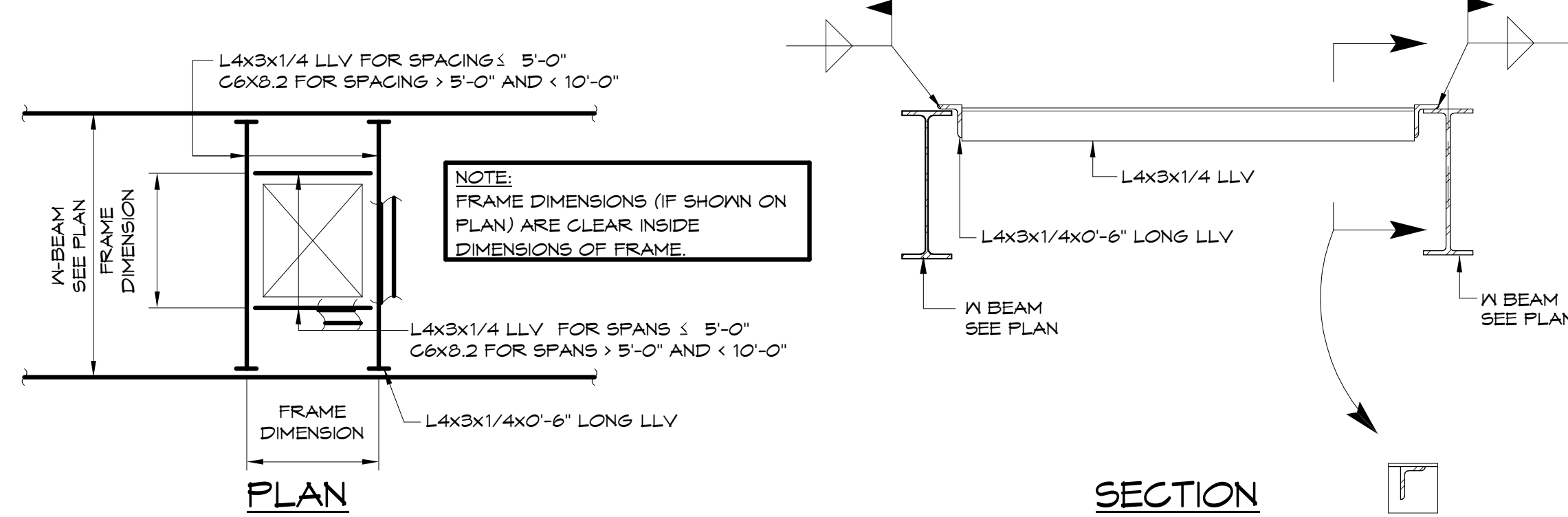
3/4" = 1'-0"



**CHANGE IN DIRECTION OF DECK**

**B**

3/4" = 1'-0"

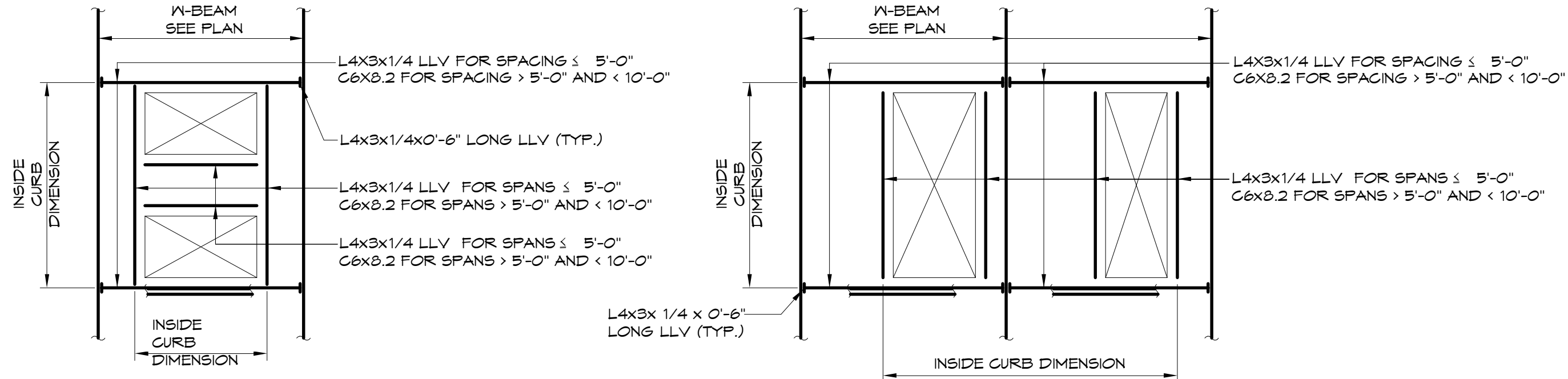


**TYPICAL ROOF OPENING FRAMING**

**C**

3/4" = 1'-0"

NOTE: FRAME REQUIRED AT ALL DRAINS, SEE PLANS - RD & FD.

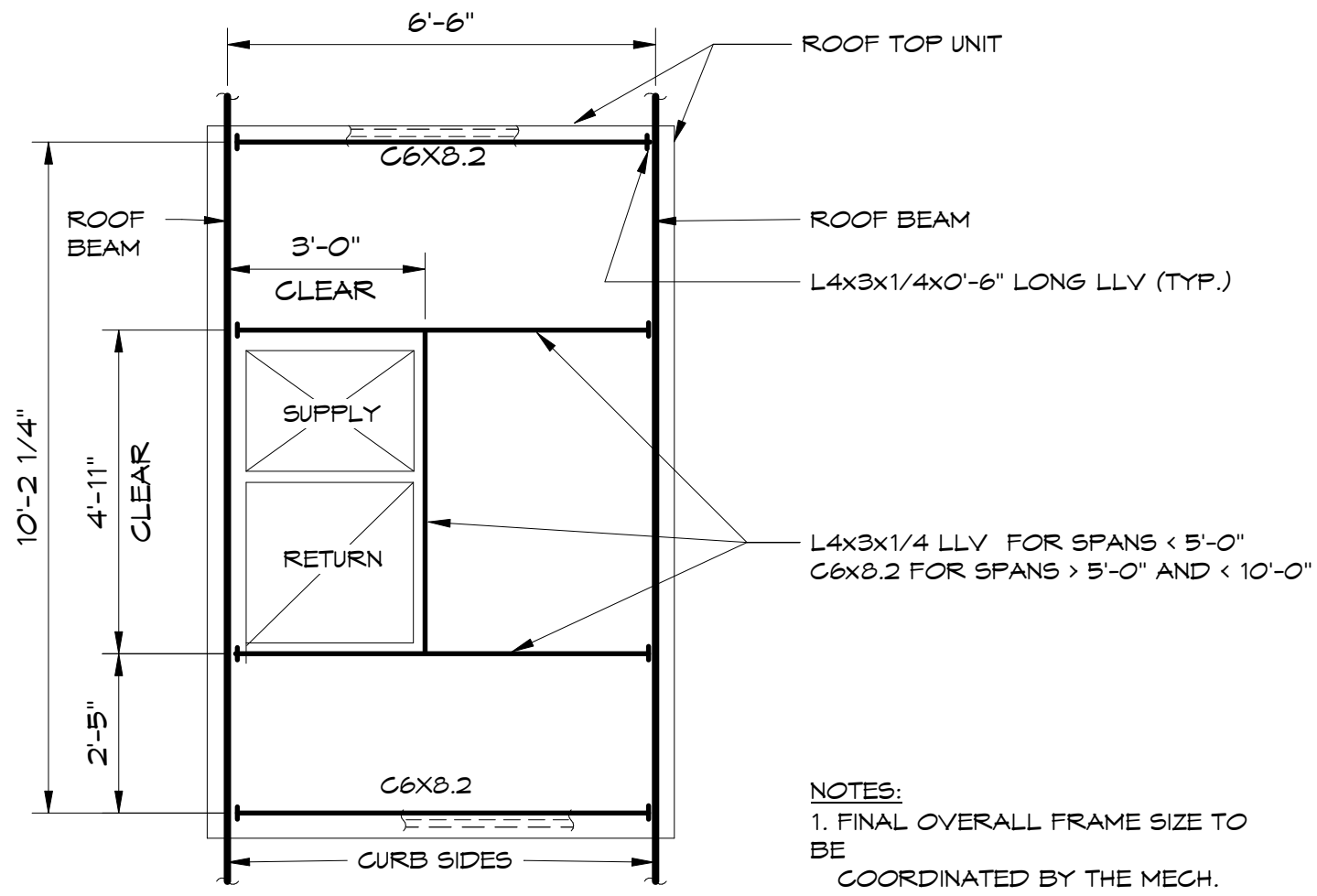


NOTES:  
1. FINAL OVERALL FRAME SIZE TO BE COORDINATED BY THE MECH. CONTRACTOR & THE G.C.

**ROOF TOP UNIT FRAME DETAIL**

**D**

3/8" = 1'-0"

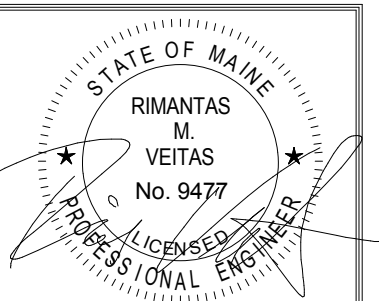


NOTES:  
1. FINAL OVERALL FRAME SIZE TO BE COORDINATED BY THE MECH. CONTRACTOR & THE G.C.

**ROOF TOP UNIT FRAME DETAIL**

**6**

3/8" = 1'-0"



Prepared For:  
**0 Hancock Street LLC**

Consulting Engineer:  
**VEITAS SVEITAS**  
engineers  
680 Granite Street, Suite 101  
Portland, Maine 04101  
TEL: (207) 772-6022 FAX: (207) 772-4056

Architect:  
**ARCHETYPE**  
architects  
48 Union Wharf Portland, Maine 04101  
(207) 772-6022 Fax (207) 772-4056

Project:  
**0 HANCOCK STREET**  
**0 HANCOCK STREET PORTLAND, MAINE**

Revisions:	Date:	Scale:
08-11-17 Issued for Foundation Permit		
08-31-17 Permit Set		
09-15-17 Steel Bid Set		
09-22-17 Pile Bid Set		
09-29-17 Concrete Bid Set		
10-06-17 Issued for Permit		

Date: **08/11/17**  
Scale: **Typical Details**

**S205**