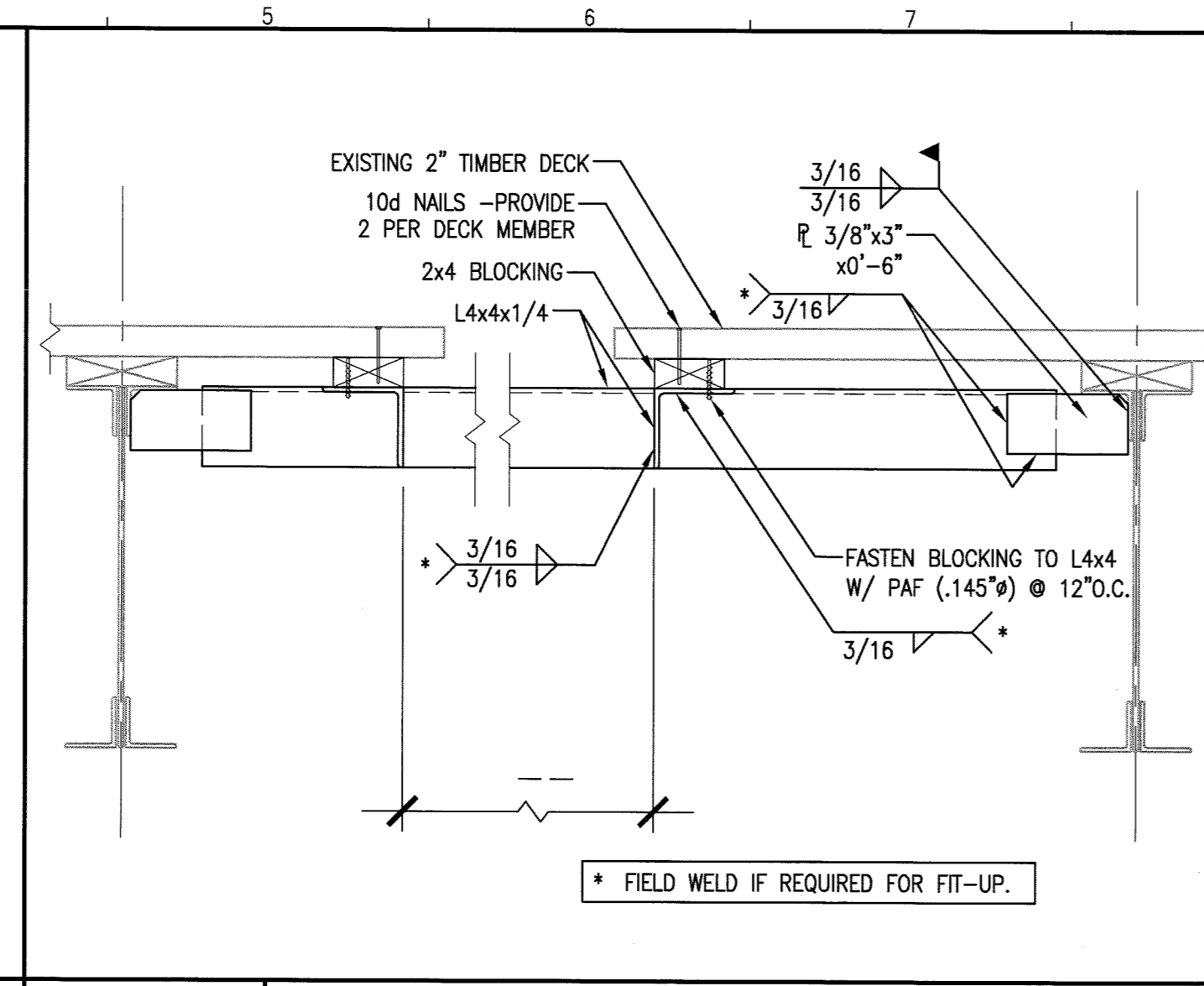
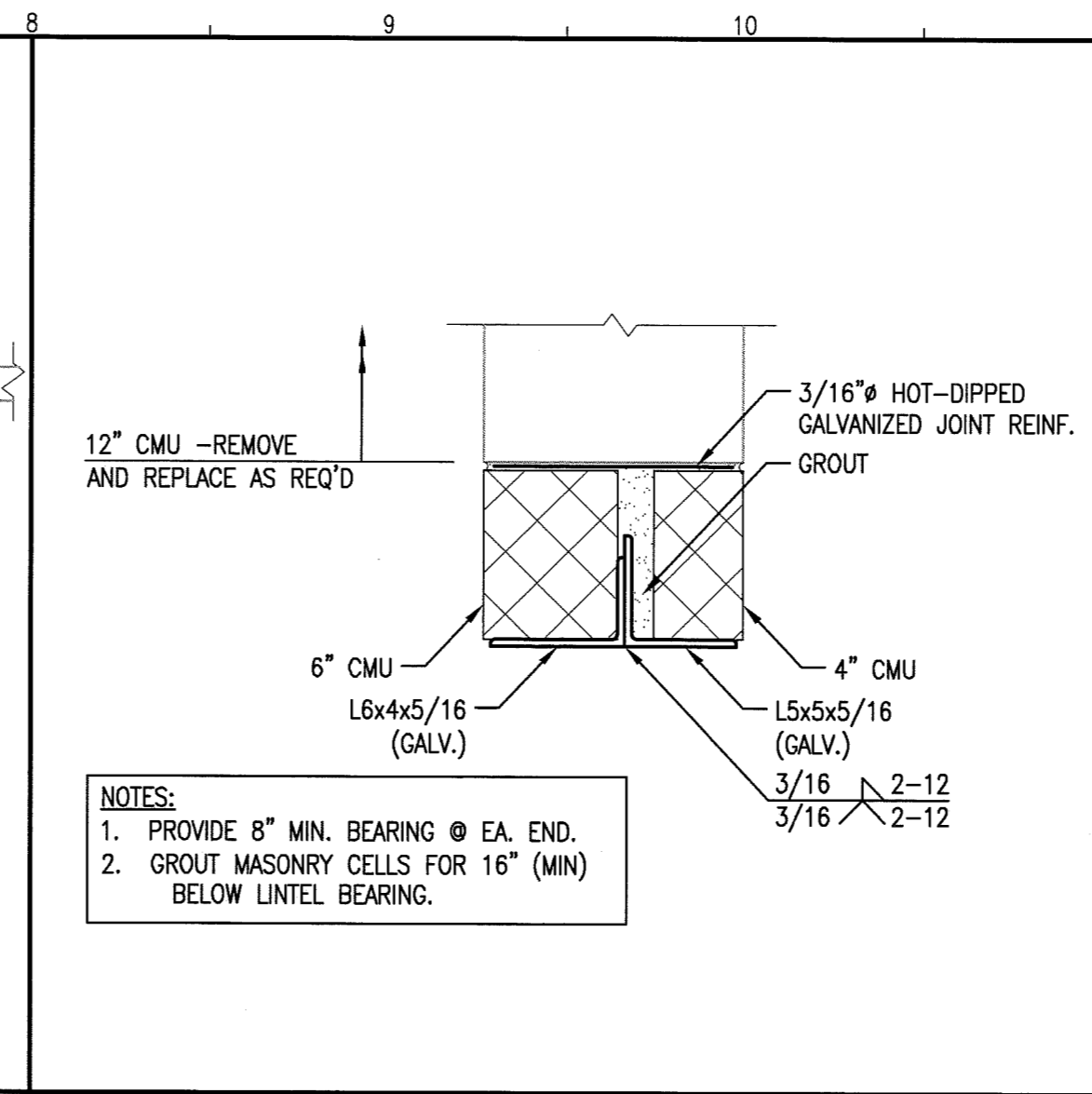


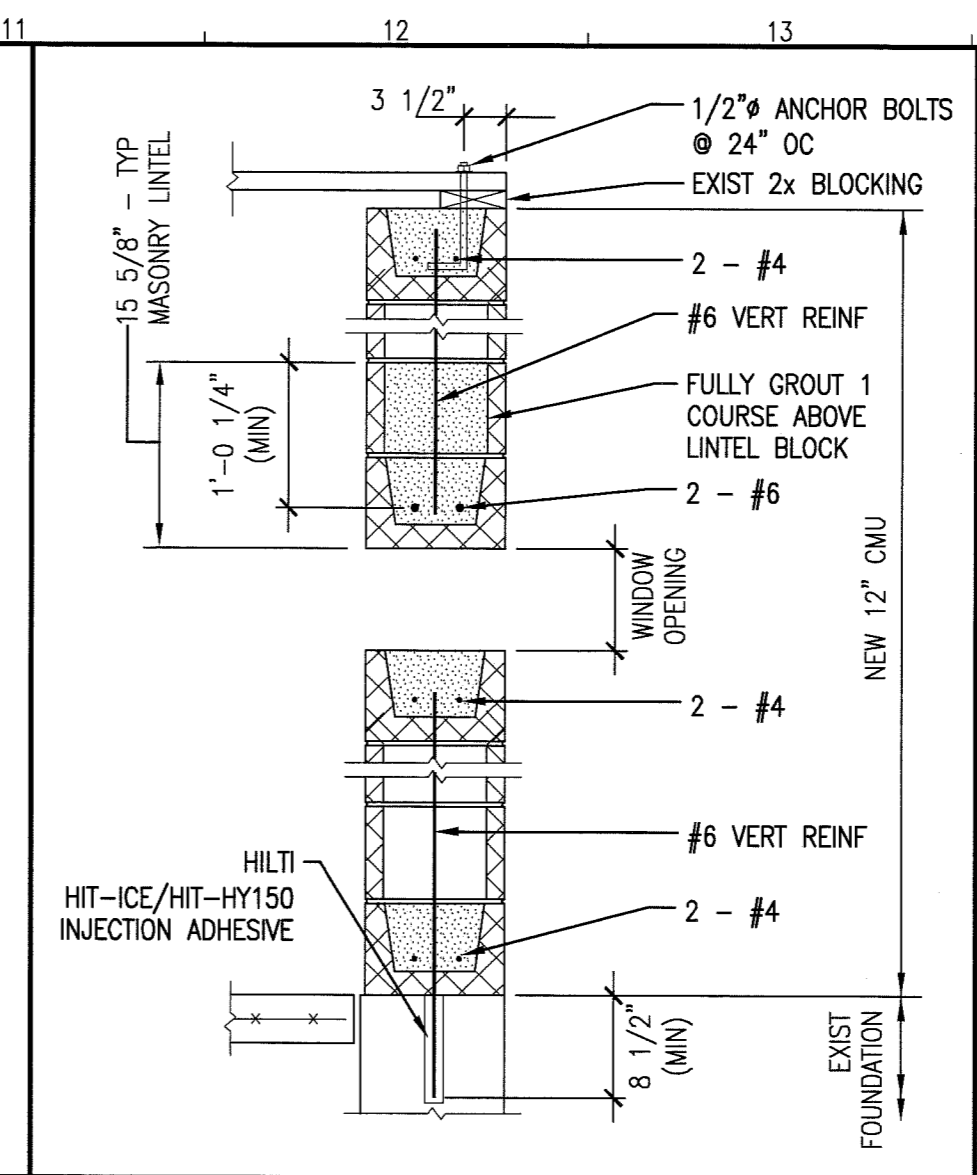
J1 SECTION
1 1/2"=1'-0"



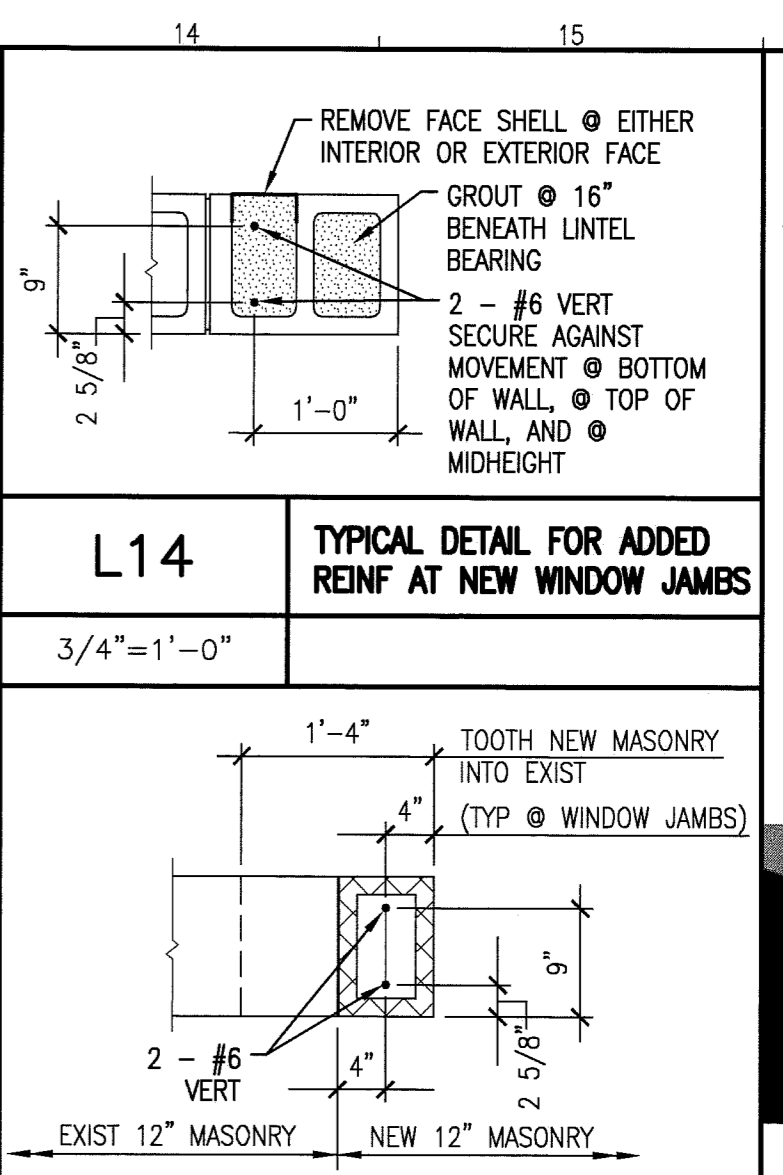
J4 SECTION
1 1/2"=1'-0"



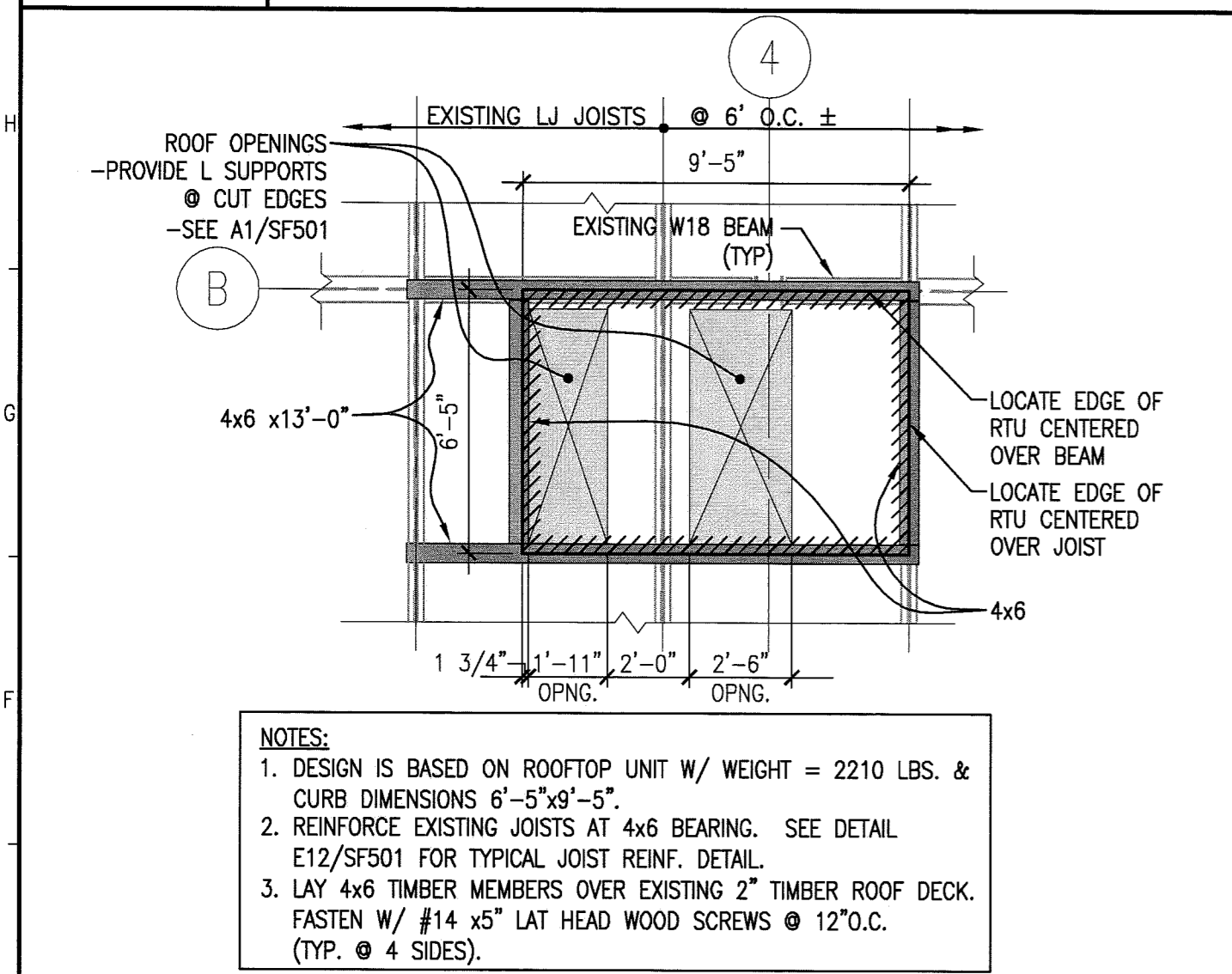
J8 TYP. STEEL LINTEL @ NEW MASONRY OPENINGS
1 1/2"=1'-0" (MAXIMUM M.O.=9'-0")



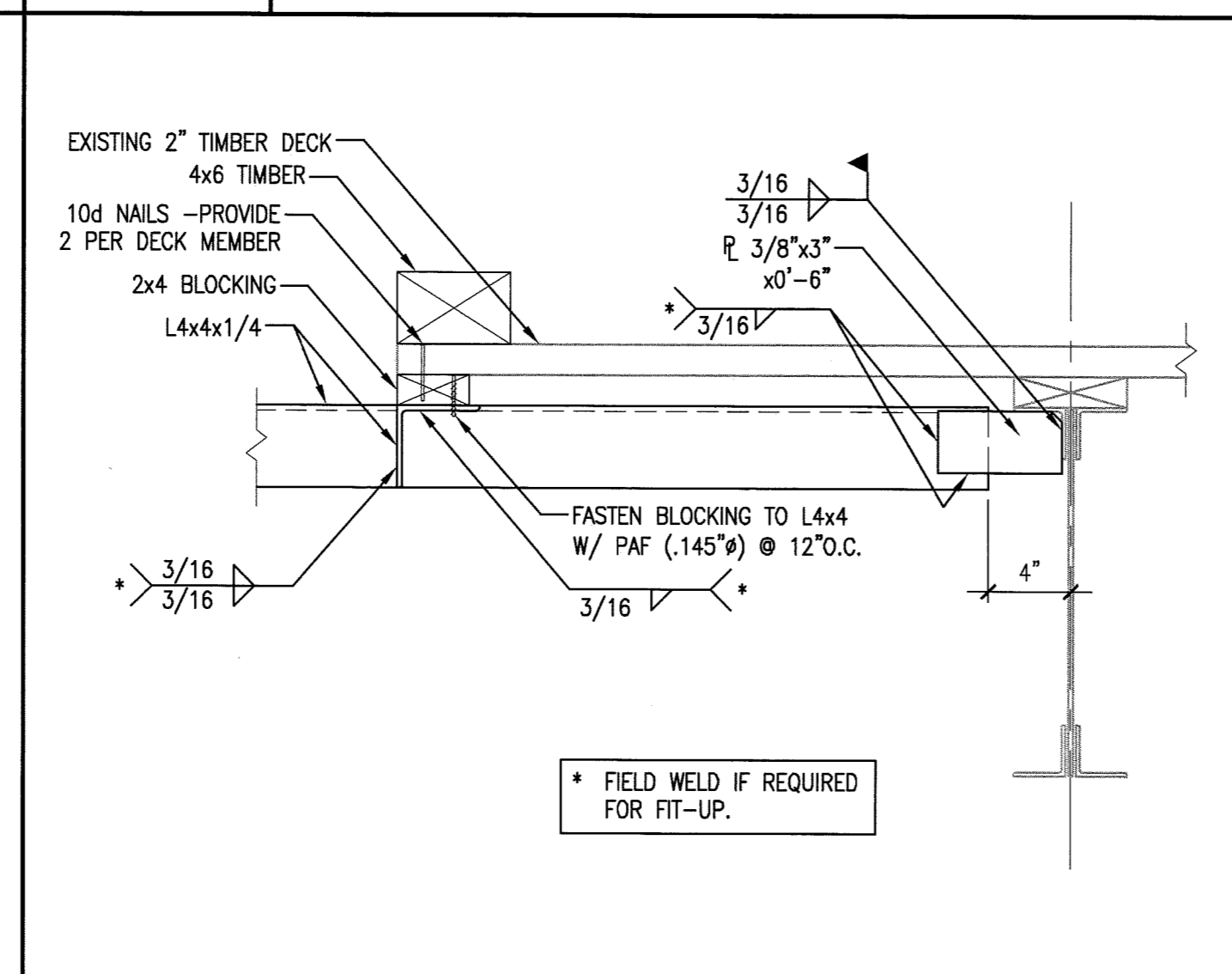
J12 SECTION
3/4"=1'-0"



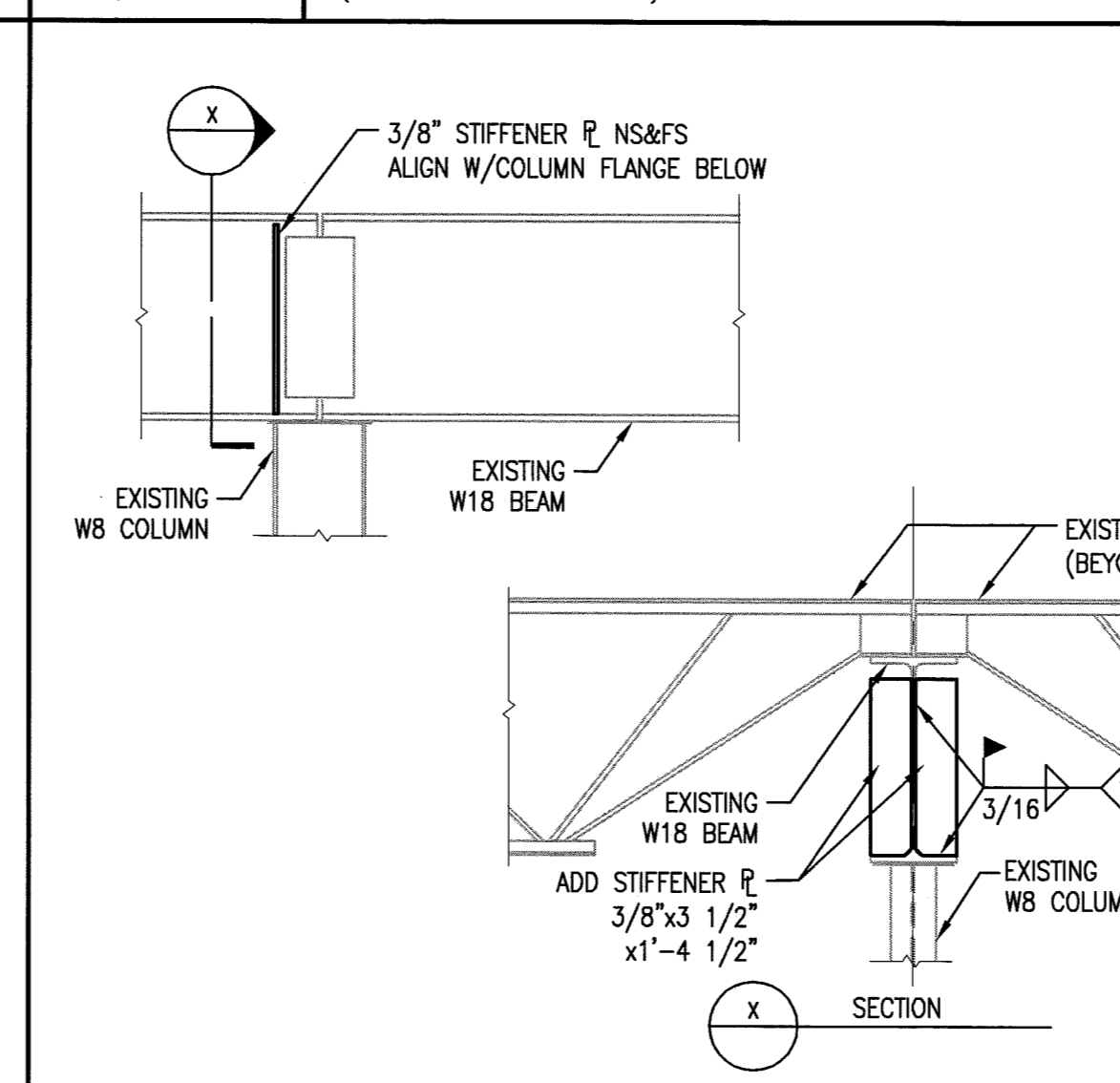
J14 SECTION
3/4"=1'-0"



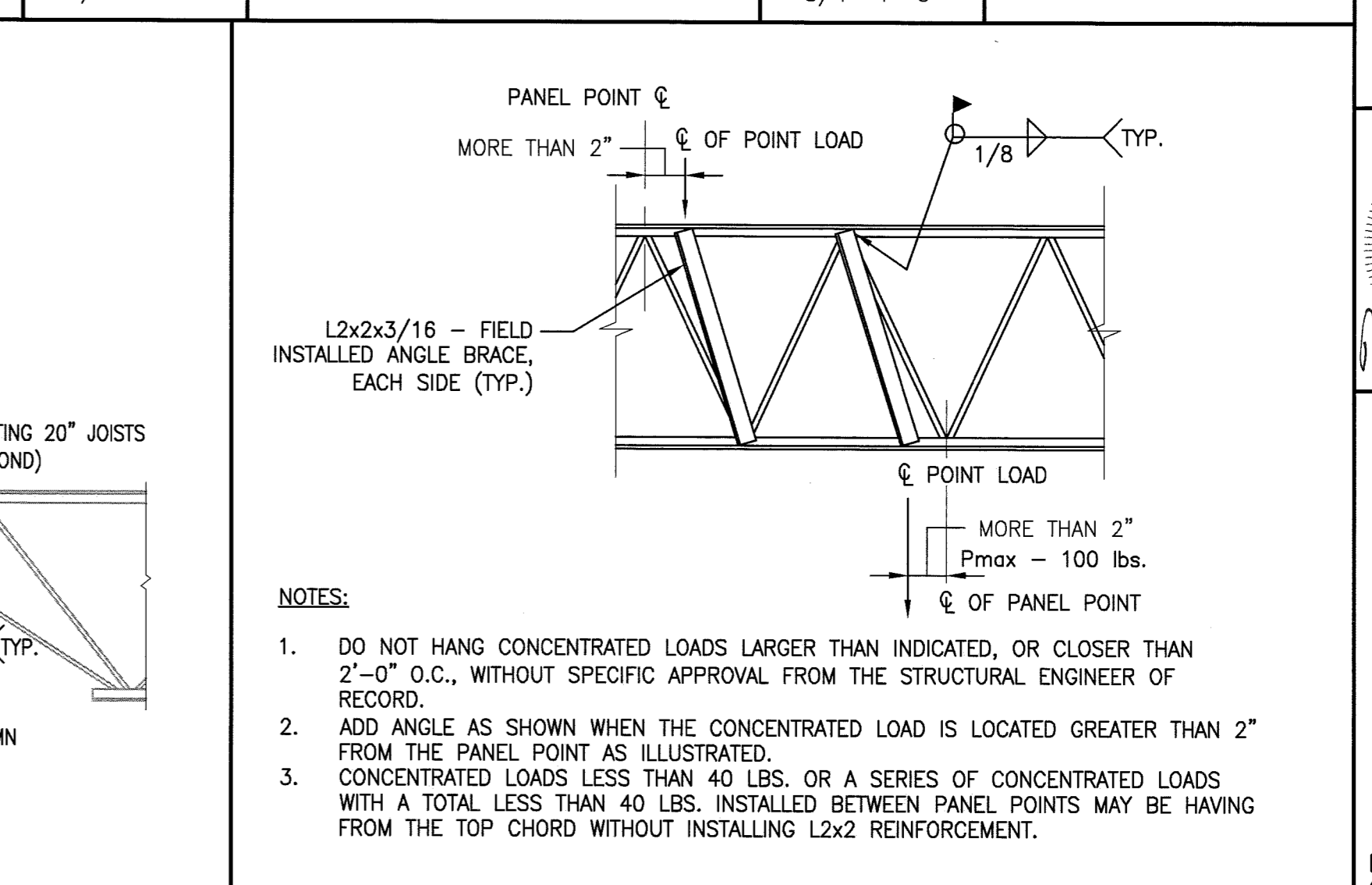
E1 RTU SUPPORT PLAN
1/4"=1'-0"



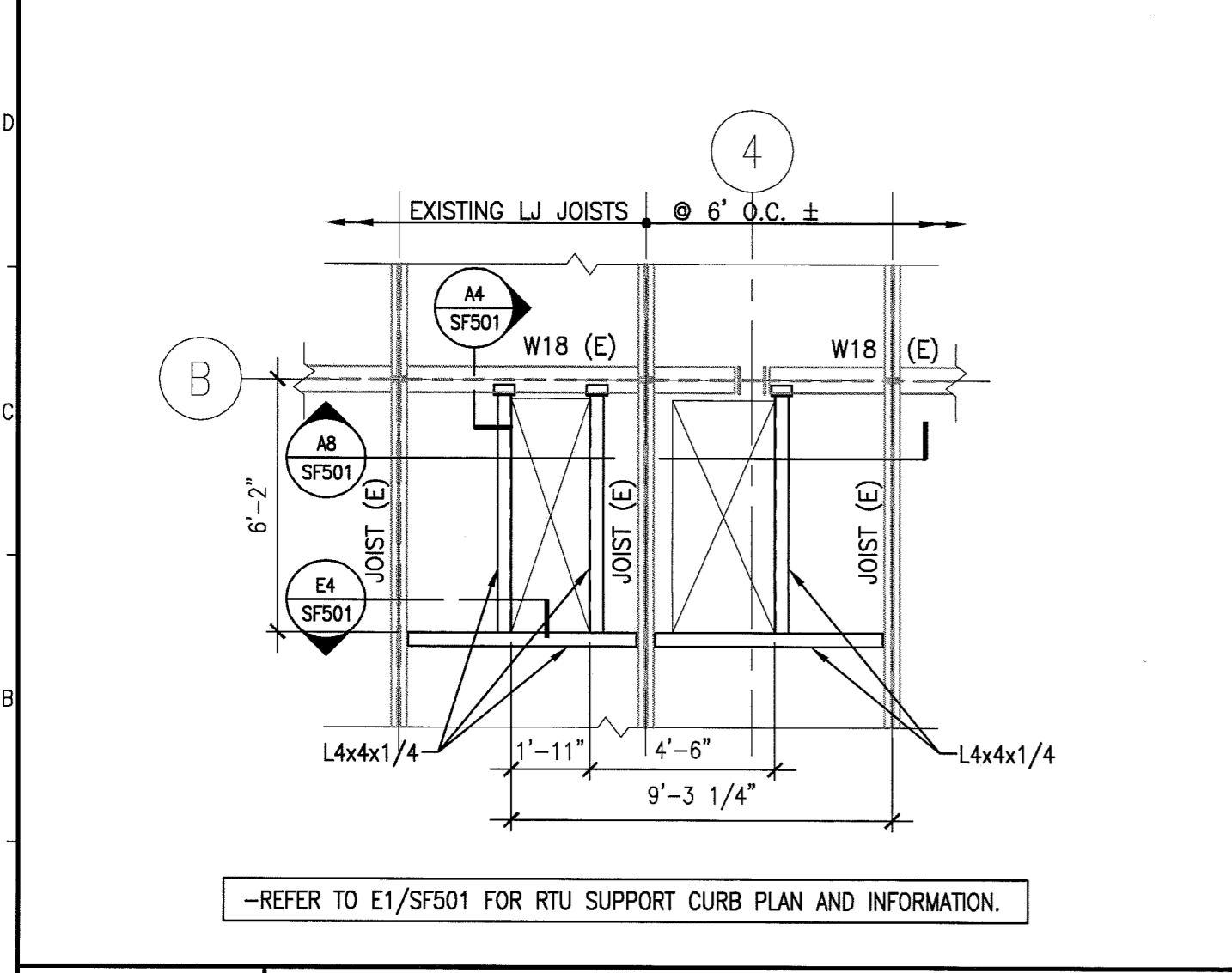
E4 SECTION
1 1/2"=1'-0"



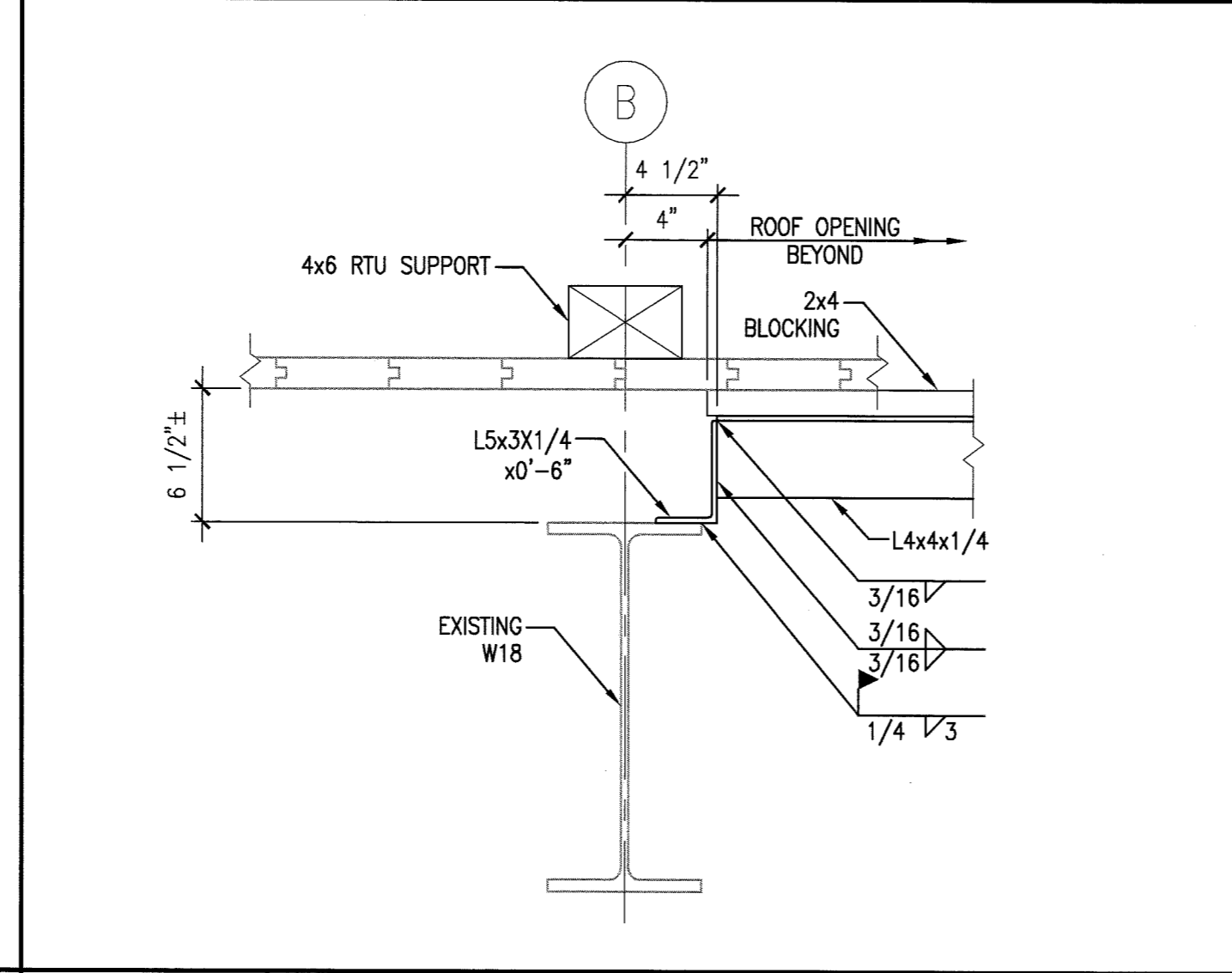
E8 TYP. BEAM REINFORCEMENT DETAIL
3/4"=1'-0"



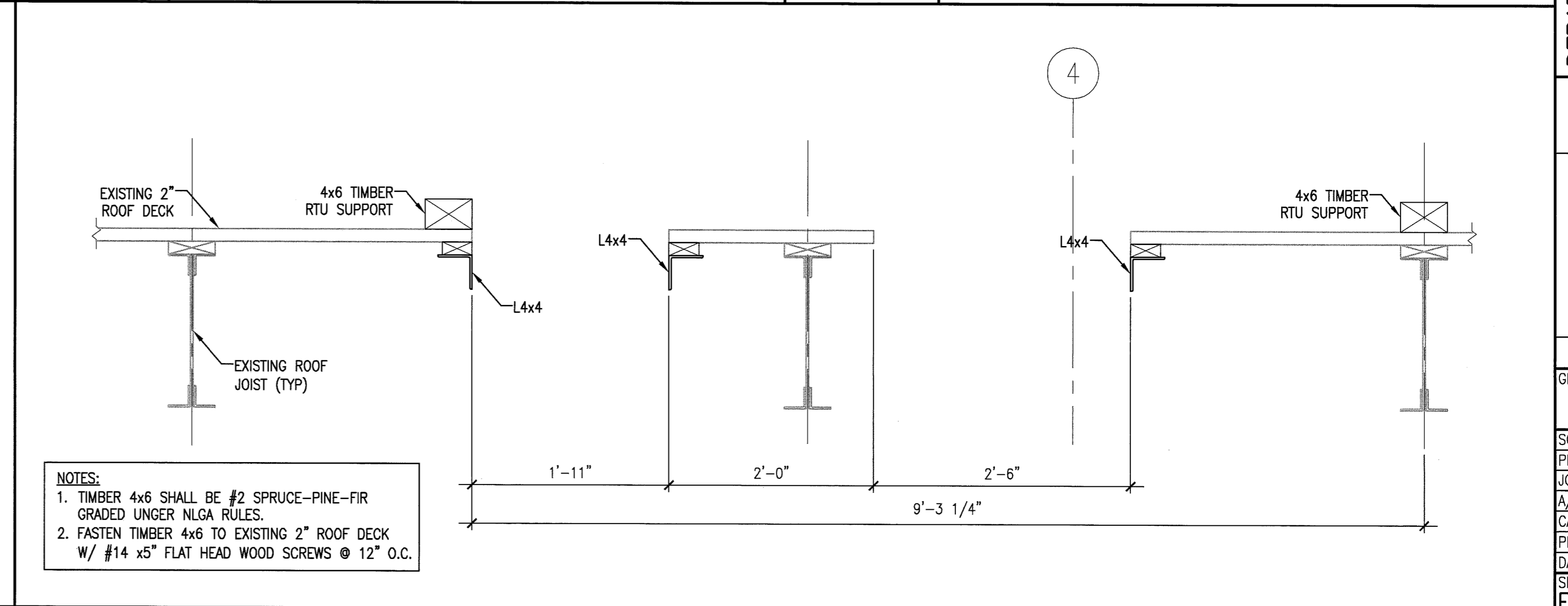
E12 TYP. JOIST REINFORCEMENT DETAIL
3/4"=1'-0"



A1 ENLARGED PARTIAL FRAMING PLAN
1/4"=1'-0"



A4 SECTION
1 1/2"=1'-0"



A8 SECTION
1"=1'-0"

144 Fore Street/P.O. Box 618
Portland, Maine 04104
tel. (207) 772-3846
fax. (207) 772-1070
www.smartinc.com

ARCHITECTURE
ENGINEERING
PLANNING
INTERIOR DESIGN
COMMISSIONING

SMART

PROJECT NORTH

STATE OF MAINE
MICHAEL J. CUNNINGHAM
LICENSED PROFESSIONAL ENGINEER

DEPARTMENT OF VETERAN AFFAIRS - PORTLAND
PORTLAND, MAINE

ISSUE FOR CONSTRUCTION
9-01-10

CURRENT ISSUE STATUS:

REV	DESCRIPTION	DATE
0	ISSUED FOR CONSTRUCTION	9-01-10

GRAPHIC SCALE:
0" = 1"

SCALE: AS NOTED

PROJECT MANAGER: DRL
JC/DRAWN BY: AFP
A/E OF RECORD: MAC
CAD FILE: SF501-10022
PROJECT NO: 10022
DATE:
SHEET TITLE:
FRAMING SECTIONS AND DETAILS
SHEET No. **SF501**
© COPYRIGHT 2009 SMART INC.