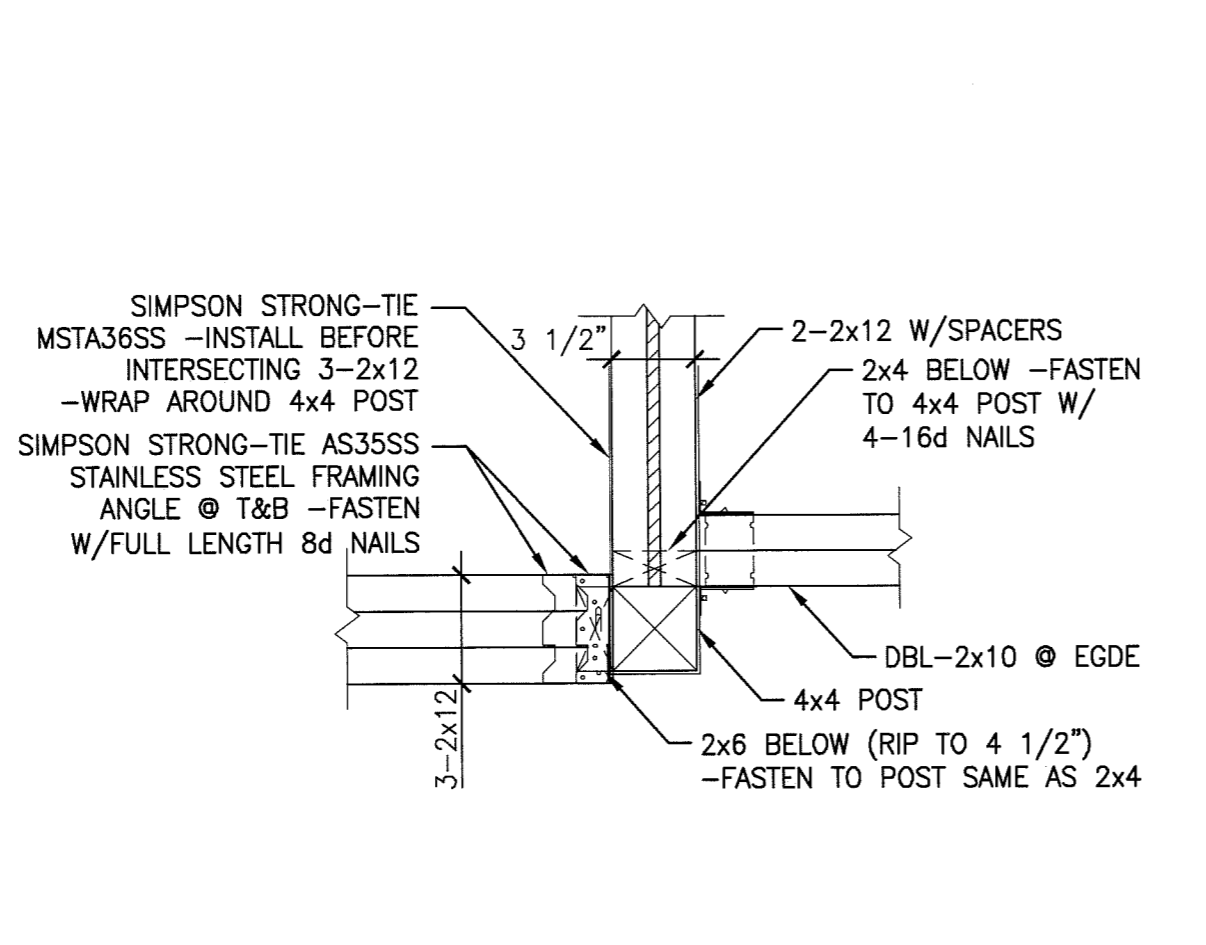
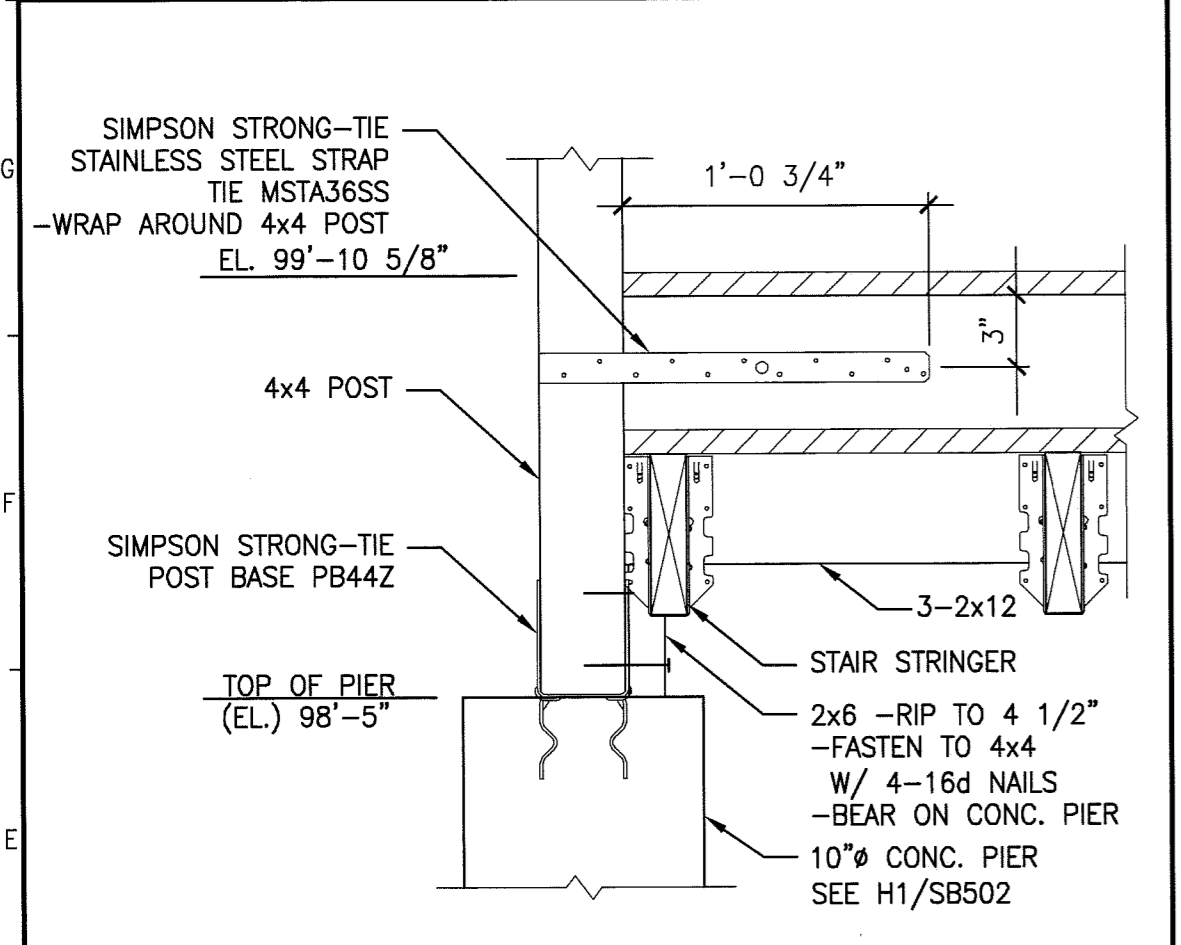


H1 SECTION
3/4"=1'-0"

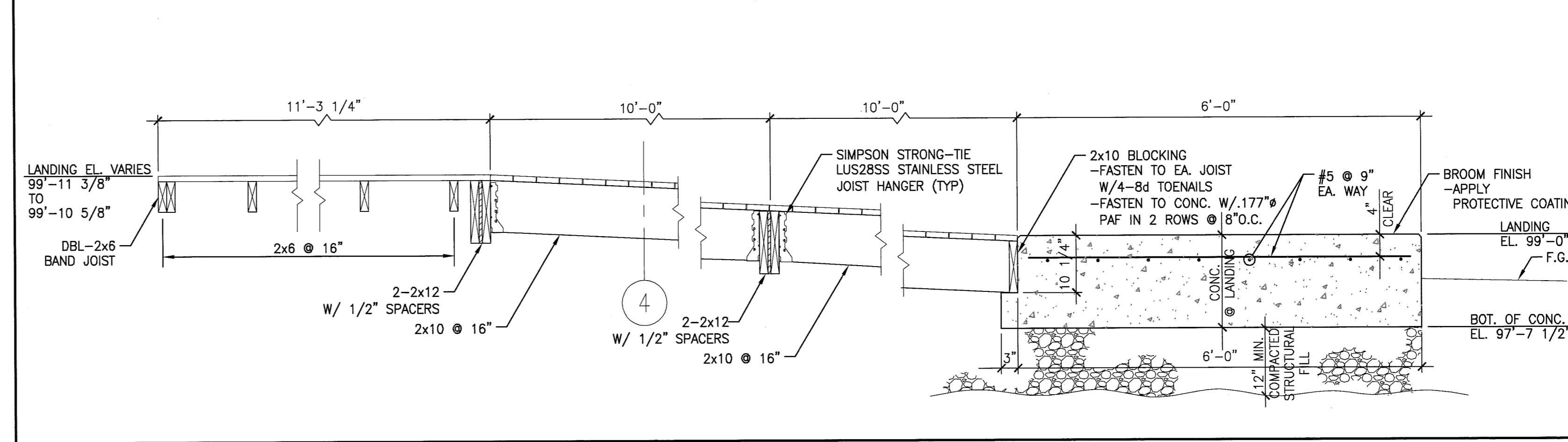
H7 SECTION
3/4"=1'-0"

H11 SECTION
3/4"=1'-0"

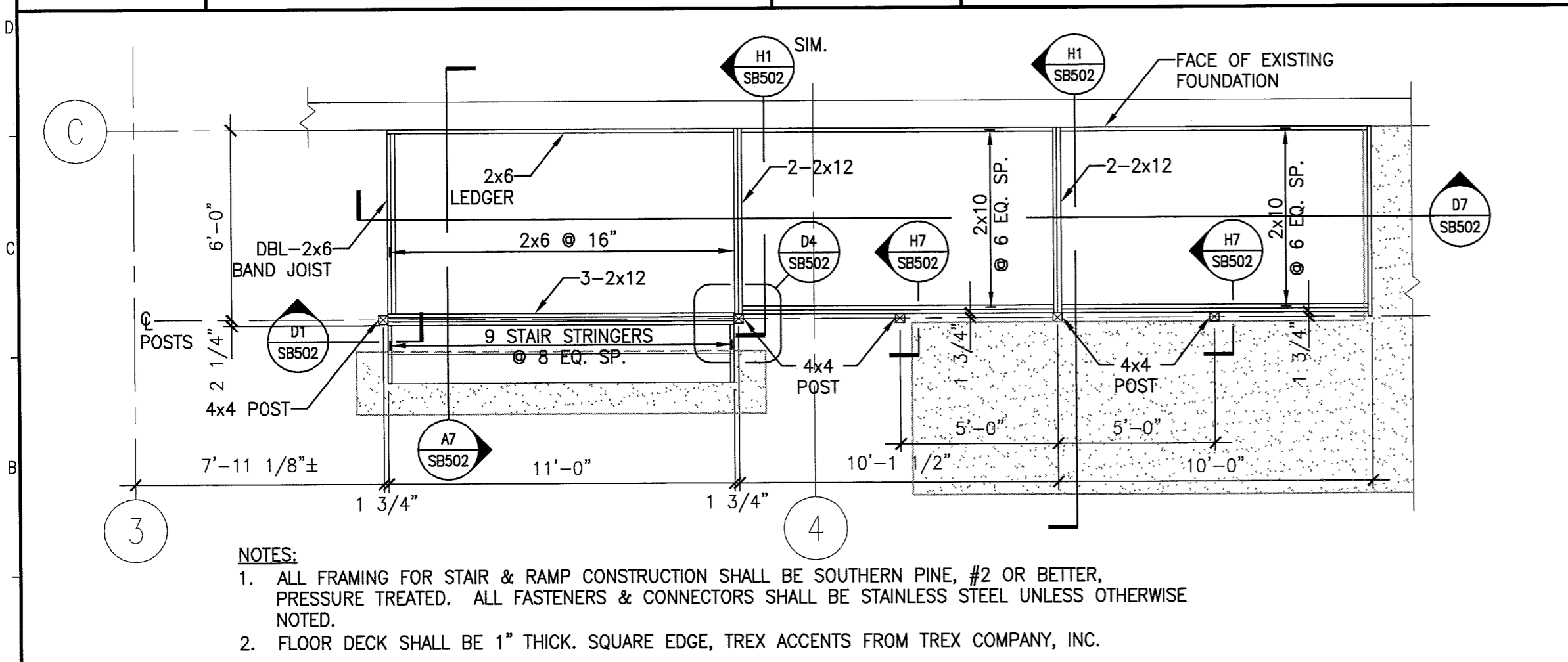


D1 SECTION
1 1/2"=1'-0"

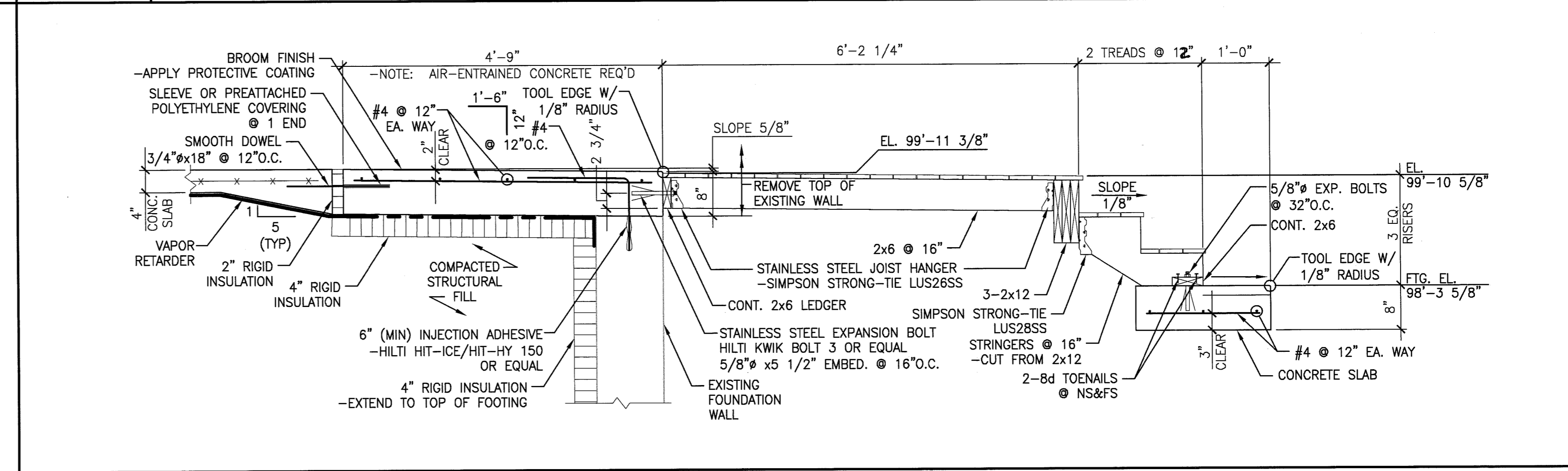
D4 SECTION
1 1/2"=1'-0"



D7 SECTION
3/4"=1'-0"



A1 ENLARGED PLAN LANDING/STAIR/RAMP
1/4"=1'-0"



A7 SECTION
3/4"=1'-0"

144 Fore Street/P.O. Box 618
Portland, Maine 04104
tel. (207) 772-3846
fax. (207) 772-1070
www.smm-inc.com

ARCHITECTURE
ENGINEERING
PLANNING
INTERIOR DESIGN
COMMISSIONING

SMART

PROJECT NORTH

STATE OF MAINE
MICHAEL A. CURRIE
LICENSED PROFESSIONAL ENGINEER

DEPARTMENT OF
VETERAN AFFAIRS - PORTLAND
PORTLAND, MAINE

ISSUE FOR CONSTRUCTION
9-01-10

REV	DESCRIPTION	DATE
0	ISSUED FOR CONSTRUCTION	9-01-10

GRAPHIC SCALE:
0" = 1"

SCALE: AS NOTED

PROJECT MANAGER: DRL
JC/DRAWN BY: AFF
A/E OF RECORD: MAC
CAD FILE: SB502-10022
PROJECT NO: 10022
DATE:

SHEET TITLE:
FOUNDATION SECTIONS AND DETAILS

SHEET No. **SB502**
© COPYRIGHT 2009 SMM INC.