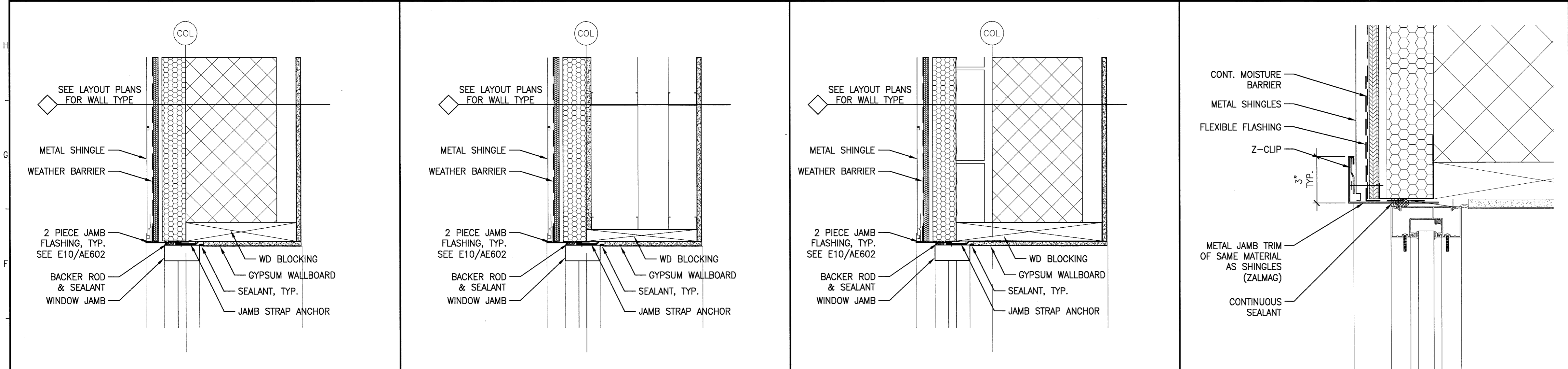
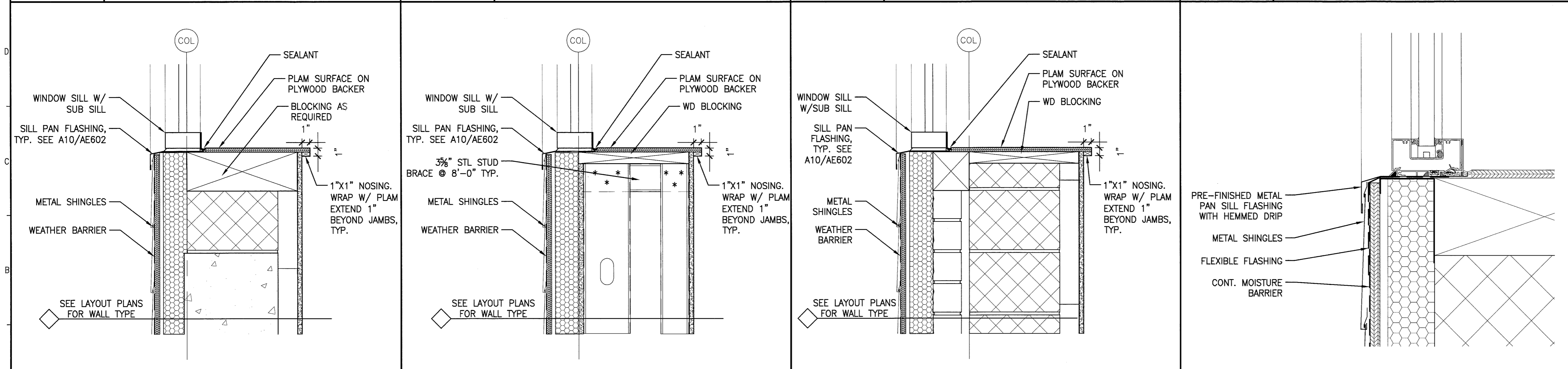


J1	EXTERIOR ALUM. WINDOW HEAD	J4	EXTERIOR ALUM. WINDOW HEAD	J7	EXTERIOR ALUM. WINDOW HEAD
1 1/2" = 1'-0"	*	1 1/2" = 1'-0"	*	1 1/2" = 1'-0"	*



E1	EXTERIOR ALUM WINDOW JAMB	E4	EXTERIOR ALUM WINDOW JAMB	E7	EXTERIOR ALUM WINDOW JAMB	E10	JAMB FLASHING (TYP)
1 1/2" = 1'-0"	*	1 1/2" = 1'-0"	*	1 1/2" = 1'-0"	*	3" = 1'-0"	*



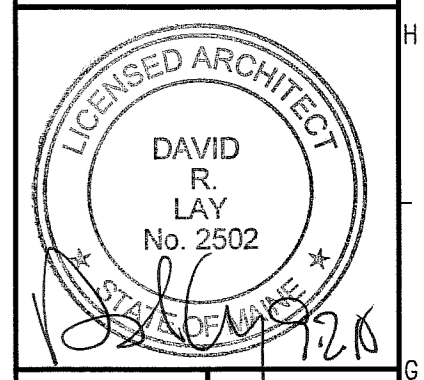
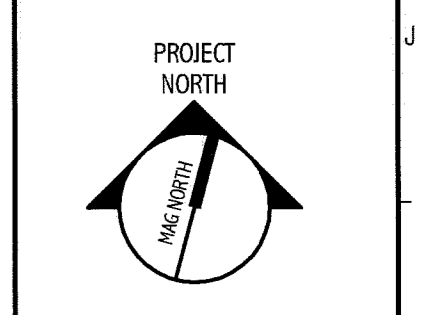
A1	EXTERIOR ALUM WINDOW SILL	A4	EXTERIOR ALUM WINDOW SILL	A7	EXTERIOR ALUM WINDOW SILL	A10	SILL PAN FLASHING (TYP)
1 1/2" = 1'-0"	*	1 1/2" = 1'-0"	*	1 1/2" = 1'-0"	*	3" = 1'-0"	*

GENERAL NOTES:
 1. ALUMINUM FRAME DETAILS ARE SHOWN FOR GRAPHICAL PURPOSES ONLY. REFER TO SPECIFICATIONS FOR ACTUAL PRODUCT.

144 Fore Street/P.O. Box 618
 Portland, Maine 04104
 tel. (207) 772-3846
 fax. (207) 772-1070
 www.smrinc.com

ARCHITECTURE
 ENGINEERING
 PLANNING
 INTERIOR DESIGN
 COMMISSIONING

SMRI



DEPARTMENT OF
 VETERAN AFFAIRS - PORTLAND
 PORTLAND, MAINE

ISSUE FOR CONSTRUCTION
 9-01-10

CURRENT ISSUE STATUS:

REV	DESCRIPTION	DATE
0	ISSUE FOR CONSTRUCTION	9-01-10

GRAPHIC SCALE:
 0" 1"

SCALE: AS NOTED

PROJECT MANAGER: DRL
 JC/DRAWN BY: TCM/KMM
 A/E OF RECORD: DRL
 CAD FILE: AE602-10022
 PROJECT NO: 10022
 DATE: 8-09-10

SHEET TITLE:
**EXTERIOR
 OPENING DETAILS**

SHEET No. **AE602**
 © COPYRIGHT 2009 SMRI INC.