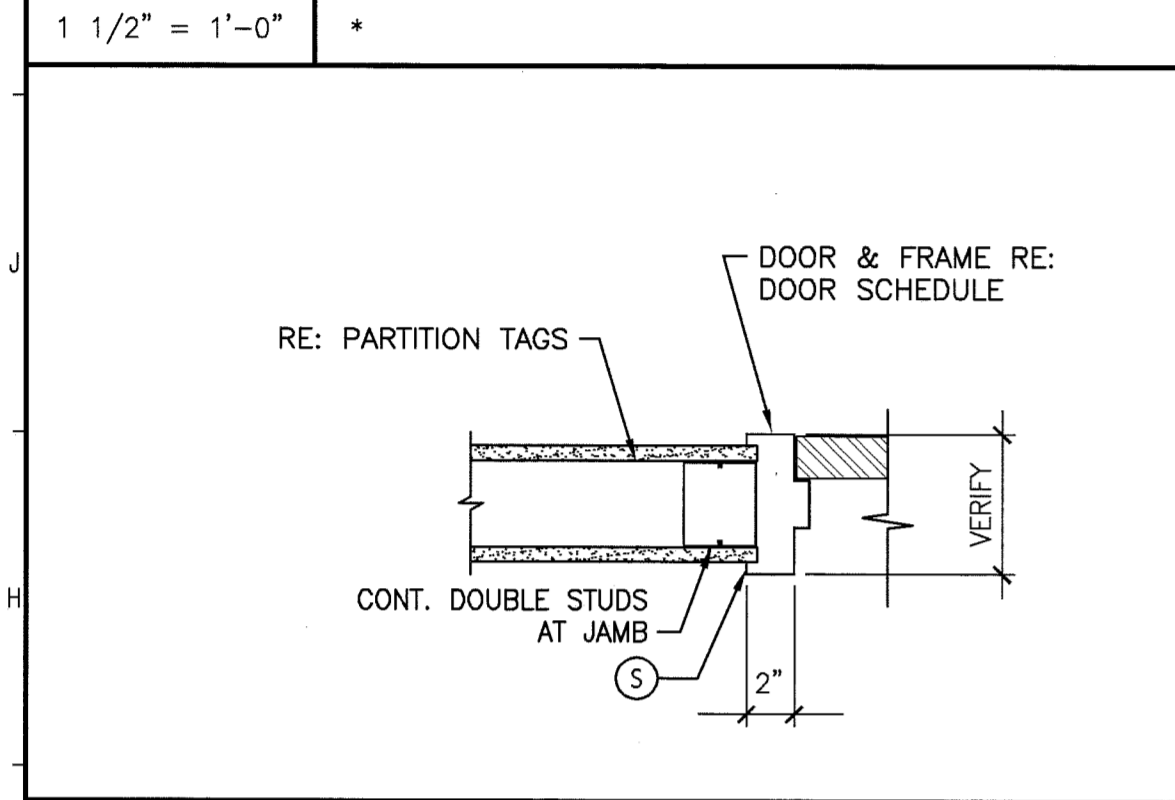
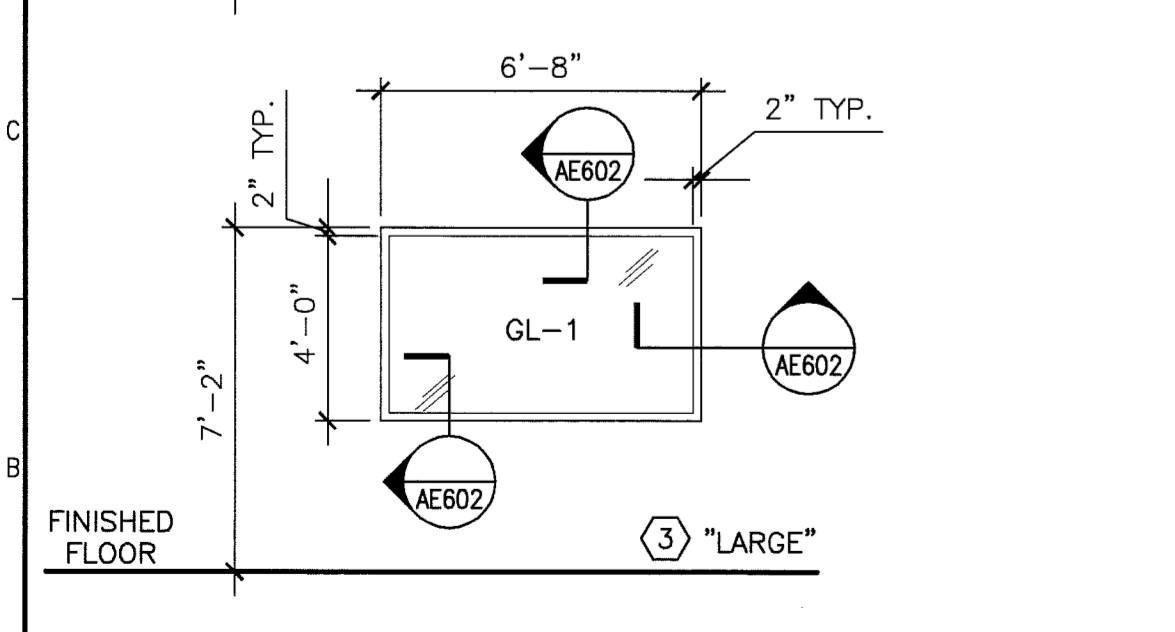
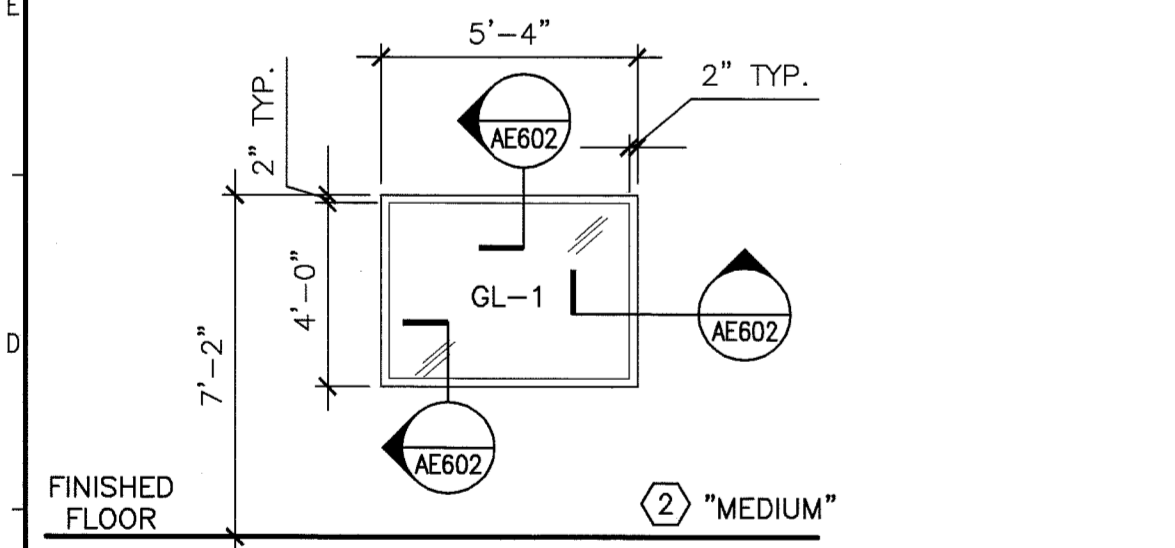
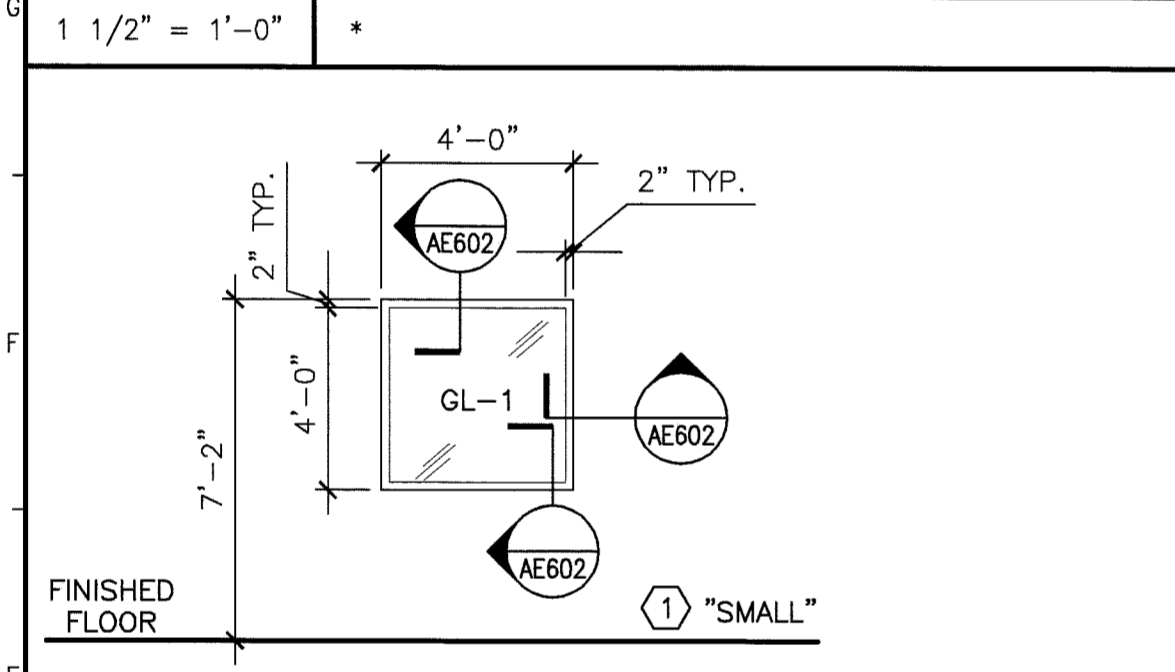


**K1 DOOR HEAD**  
1 1/2" = 1'-0" \*



**G1 DOOR JAMB**  
1 1/2" = 1'-0" \*



NOTE: REFER TO WALL TYPE FOR HEAD, JAMB, SILL DETAIL INFORMATION

**A1 WINDOW FRAME ELEVATIONS**  
NTS \*

| DOOR SCHEDULE |                      |      |      |       |       |       |      |          |             |          |          |                                   |      |      |
|---------------|----------------------|------|------|-------|-------|-------|------|----------|-------------|----------|----------|-----------------------------------|------|------|
| NO.           | W x H                | DOOR |      |       | FRAME |       |      | HDW GRP  | DOOR KEYING | FIRE RTG | DOOR NO. | REMARKS                           |      |      |
|               |                      | MATL | ELEV | GLAZE | MATL  | GAUGE | ELEV |          |             |          |          |                                   | HEAD | JAMB |
| A01           | 3'-6" X 7'-0"        | ALUM | G    | GL-2  | HM    | 16    | 1    | -        | -           | -        | A01      | -                                 |      |      |
| F01           | 3'-0" X 7'-0"        | WD   | D    | GL-4  | HM    | 16    | 1    | -        | -           | -        | F01      | -                                 |      |      |
| H01           | 3'-0" X 7'-0"        | WD   | D    | GL-4  | HM    | 16    | 1    | K1/AE601 | G1/AE601    | -        | H01      | -                                 |      |      |
| H02           | 3'-6" X 7'-0"        | WD   | D    | GL-4  | HM    | 16    | 1    | K1/AE601 | G1/AE601    | -        | H02      | -                                 |      |      |
| J01           | 3'-0" X 7'-0" (F.V.) | HM   | F    | -     | HM    | 16    | 1    | -        | -           | -        | J01      | NEW DOOR IN EXISTING MAS. OPENING |      |      |
| K01           | EXISTING             | -    | -    | -     | -     | -     | -    | -        | -           | -        | K01      | -                                 |      |      |
| 101A          | 3'-6" X 7'-0"        | WD   | F    | -     | HM    | 16    | 1    | K1/AE601 | G1/AE601    | -        | 101A     | -                                 |      |      |
| 101B          | 3'-0" X 7'-0"        | HM   | F    | -     | HM    | 16    | 1    | K1/AE601 | G1/AE601    | -        | 101B     | -                                 |      |      |
| 102           | 3'-0" X 7'-0"        | WD   | F    | -     | HM    | 16    | 1    | K1/AE601 | G1/AE601    | -        | 102      | -                                 |      |      |
| 103           | 3'-0" X 7'-0"        | WD   | F    | -     | HM    | 16    | 1    | K1/AE601 | G1/AE601    | -        | 103      | -                                 |      |      |
| 104           | 3'-6" X 7'-0"        | WD   | F    | -     | HM    | 16    | 1    | K1/AE601 | G1/AE601    | -        | 104      | -                                 |      |      |
| 105           | 3'-0" X 7'-0"        | WD   | F    | -     | HM    | 16    | 1    | K1/AE601 | G1/AE601    | -        | 105      | -                                 |      |      |
| 106           | 3'-0" X 7'-0"        | WD   | F    | -     | HM    | 16    | 1    | K1/AE601 | G1/AE601    | -        | 106      | -                                 |      |      |
| 107           | 3'-0" X 7'-0"        | WD   | F    | -     | HM    | 16    | 1    | K1/AE601 | G1/AE601    | -        | 107      | -                                 |      |      |
| 108           | 3'-6" X 7'-0"        | WD   | F    | -     | HM    | 16    | 1    | K1/AE601 | G1/AE601    | -        | 108      | -                                 |      |      |
| 108A          | 3'-0" X 7'-0"        | WD   | F    | -     | HM    | 16    | 1    | K1/AE601 | G1/AE601    | -        | 108A     | -                                 |      |      |
| 109           | 3'-6" X 7'-0"        | WD   | F    | -     | HM    | 16    | 1    | K1/AE601 | G1/AE601    | -        | 109      | -                                 |      |      |
| 110           | 3'-6" X 7'-0"        | WD   | F    | -     | HM    | 16    | 1    | K1/AE601 | G1/AE601    | -        | 110      | -                                 |      |      |
| 111           | 3'-0" X 7'-0"        | WD   | F    | -     | HM    | 16    | 1    | K1/AE601 | G1/AE601    | -        | 111      | -                                 |      |      |
| 112           | 3'-0" X 7'-0"        | WD   | F    | -     | HM    | 16    | 1    | K1/AE601 | G1/AE601    | -        | 112      | -                                 |      |      |
| 113           | 3'-0" X 7'-0"        | WD   | F    | -     | HM    | 16    | 1    | K1/AE601 | G1/AE601    | -        | 113      | -                                 |      |      |
| 114           | 3'-0" X 7'-0"        | WD   | F    | -     | HM    | 16    | 1    | K1/AE601 | G1/AE601    | -        | 114      | -                                 |      |      |
| 115           | 3'-0" X 7'-0"        | WD   | F    | -     | HM    | 16    | 1    | K1/AE601 | G1/AE601    | -        | 115      | -                                 |      |      |
| 116           | 3'-0" X 7'-0"        | WD   | F    | -     | HM    | 16    | 1    | K1/AE601 | G1/AE601    | -        | 116      | -                                 |      |      |
| 117           | 3'-0" X 7'-0"        | WD   | F    | -     | HM    | 16    | 1    | K1/AE601 | G1/AE601    | -        | 117      | -                                 |      |      |
| 118           | 3'-0" X 7'-0"        | WD   | F    | -     | HM    | 16    | 1    | K1/AE601 | G1/AE601    | -        | 118      | -                                 |      |      |
| 119A          | 3'-0" X 7'-0"        | WD   | F    | -     | HM    | 16    | 1    | K1/AE601 | G1/AE601    | -        | 119A     | -                                 |      |      |
| 119B          | 3'-0" X 7'-0"        | WD   | F    | -     | HM    | 16    | 1    | K1/AE601 | G1/AE601    | -        | 119B     | -                                 |      |      |
| 121           | 3'-6" X 7'-0"        | WD   | F    | -     | HM    | 16    | 1    | K1/AE601 | G1/AE601    | -        | 121      | -                                 |      |      |
| 122           | 3'-0" X 7'-0"        | WD   | F    | -     | HM    | 16    | 1    | K1/AE601 | G1/AE601    | -        | 122      | -                                 |      |      |
| 123           | 3'-0" X 7'-0"        | WD   | F    | -     | HM    | 16    | 1    | K1/AE601 | G1/AE601    | -        | 123      | -                                 |      |      |
| 124           | 3'-6" X 7'-0"        | WD   | F    | -     | HM    | 16    | 1    | K1/AE601 | G1/AE601    | -        | 124      | -                                 |      |      |
| 125A          | 3'-0" X 7'-0"        | WD   | F    | -     | HM    | 16    | 1    | K1/AE601 | G1/AE601    | -        | 125A     | -                                 |      |      |
| 125B          | 3'-0" X 7'-0"        | WD   | F    | -     | HM    | 16    | 1    | K1/AE601 | G1/AE601    | -        | 125B     | -                                 |      |      |
| 125C          | 3'-0" X 7'-0"        | WD   | F    | -     | HM    | 16    | 1    | K1/AE601 | G1/AE601    | -        | 125C     | -                                 |      |      |
| 126A          | 3'-6" X 7'-0"        | WD   | D    | GL-4  | HM    | 16    | 1    | K1/AE601 | G1/AE601    | -        | 126A     | -                                 |      |      |
| 126B          | 3'-6" X 7'-0"        | WD   | D    | GL-4  | HM    | 16    | 1    | K1/AE601 | G1/AE601    | -        | 126B     | -                                 |      |      |
| 127           | 3'-0" X 7'-0"        | WD   | F    | -     | HM    | 16    | 1    | K1/AE601 | G1/AE601    | -        | 127      | -                                 |      |      |
| 128A          | 3'-0" X 7'-0"        | WD   | F    | -     | HM    | 16    | 1    | K1/AE601 | G1/AE601    | -        | 128A     | -                                 |      |      |
| 128B          | 3'-0" X 7'-0"        | WD   | F    | -     | HM    | 16    | 1    | K1/AE601 | G1/AE601    | -        | 128B     | -                                 |      |      |
| 128C          | 2'-0" X 7'-0"        | WD   | F    | -     | HM    | 16    | 1    | K1/AE601 | G1/AE601    | -        | 128C     | -                                 |      |      |
| 128D          | 2'-0" X 7'-0"        | WD   | F    | -     | HM    | 16    | 1    | K1/AE601 | G1/AE601    | -        | 128D     | -                                 |      |      |
| 131           | 3'-0" X 7'-0"        | WD   | F    | -     | HM    | 16    | 1    | K1/AE601 | G1/AE601    | -        | 131      | -                                 |      |      |
| 132           | 3'-0" X 7'-0"        | WD   | F    | -     | HM    | 16    | 1    | K1/AE601 | G1/AE601    | -        | 132      | -                                 |      |      |
| 134           | 3'-0" X 7'-0"        | WD   | E    | GL-3  | HM    | 16    | 1    | K1/AE601 | G1/AE601    | -        | 134      | -                                 |      |      |
| 135           | 3'-0" X 7'-0"        | WD   | F    | -     | HM    | 16    | 1    | K1/AE601 | G1/AE601    | -        | 135      | -                                 |      |      |
| 136           | 3'-0" X 7'-0"        | WD   | E    | GL-3  | HM    | 16    | 1    | K1/AE601 | G1/AE601    | -        | 136      | -                                 |      |      |
| 137           | 3'-0" X 7'-0"        | WD   | F    | -     | HM    | 16    | 1    | K1/AE601 | G1/AE601    | -        | 137      | -                                 |      |      |
| 138           | 3'-0" X 7'-0"        | WD   | E    | GL-3  | HM    | 16    | 1    | K1/AE601 | G1/AE601    | -        | 138      | -                                 |      |      |
| 139           | 3'-0" X 7'-0"        | WD   | E    | GL-3  | HM    | 16    | 1    | K1/AE601 | G1/AE601    | -        | 139      | -                                 |      |      |
| 140           | 3'-0" X 7'-0"        | WD   | F    | -     | HM    | 16    | 1    | K1/AE601 | G1/AE601    | -        | 140      | -                                 |      |      |
| 141           | 3'-0" X 7'-0"        | WD   | E    | GL-3  | HM    | 16    | 1    | K1/AE601 | G1/AE601    | -        | 141      | -                                 |      |      |
| 142           | 3'-0" X 7'-0"        | WD   | E    | GL-3  | HM    | 16    | 1    | K1/AE601 | G1/AE601    | -        | 142      | -                                 |      |      |
| 143           | 3'-0" X 7'-0"        | WD   | E    | GL-3  | HM    | 16    | 1    | K1/AE601 | G1/AE601    | -        | 143      | -                                 |      |      |
| 144           | 3'-0" X 7'-0"        | WD   | E    | GL-3  | HM    | 16    | 1    | K1/AE601 | G1/AE601    | -        | 144      | -                                 |      |      |
| 145           | 3'-6" X 7'-0"        | WD   | E    | GL-3  | HM    | 16    | 1    | K1/AE601 | G1/AE601    | -        | 145      | -                                 |      |      |
| 146           | 3'-0" X 7'-0"        | WD   | E    | GL-3  | HM    | 16    | 1    | K1/AE601 | G1/AE601    | -        | 146      | -                                 |      |      |
| 147           | 3'-0" X 7'-0"        | WD   | E    | GL-3  | HM    | 16    | 1    | K1/AE601 | G1/AE601    | -        | 147      | -                                 |      |      |
| 148           | 3'-0" X 7'-0"        | WD   | F    | -     | HM    | 16    | 1    | K1/AE601 | G1/AE601    | -        | 148      | -                                 |      |      |
| 149           | 3'-0" X 7'-0"        | WD   | F    | -     | HM    | 16    | 1    | K1/AE601 | G1/AE601    | -        | 149      | -                                 |      |      |
| 151A          | 3'-6" X 7'-0"        | ALUM | G    | GL-2  | ALUM  | -     | 2    | J4/AE603 | E4/AE603    | A4/AE603 | 1A       | 151A                              | -    |      |
| 151B          | 3'-6" X 7'-0"        | ALUM | G    | GL-4  | ALUM  | -     | 2    | J7/AE603 | E7/AE603    | -        | 1B       | 1                                 | 151B | -    |
| 153           | 3'-0" X 7'-0"        | WD   | F    | -     | HM    | 16    | 1    | K1/AE601 | G1/AE601    | -        | 2B       | 1                                 | 153  | -    |
| 154           | 3'-0" X 7'-0"        | WD   | F    | -     | HM    | 16    | 1    | K1/AE601 | G1/AE601    | -        | 2B       | 1                                 | 154  | -    |
| 155           | 3'-0" X 7'-0"        | WD   | F    | -     | HM    | 16    | 1    | K1/AE601 | G1/AE601    | -        | 2B       | 1                                 | 155  | -    |
| 156           | 3'-0" X 7'-0"        | WD   | F    | -     | HM    | 16    | 1    | K1/AE601 | G1/AE601    | -        | 2B       | 1                                 | 156  | -    |
| 157           | 3'-0" X 7'-0"        | WD   | F    | -     | HM    | 16    | 1    | K1/AE601 | G1/AE601    | -        | 2B       | 1                                 | 157  | -    |
| 158           | 3'-0" X 7'-0"        | WD   | F    | -     | HM    | 16    | 1    | K1/AE601 | G1/AE601    | -        | 2A       | 1                                 | 158  | -    |

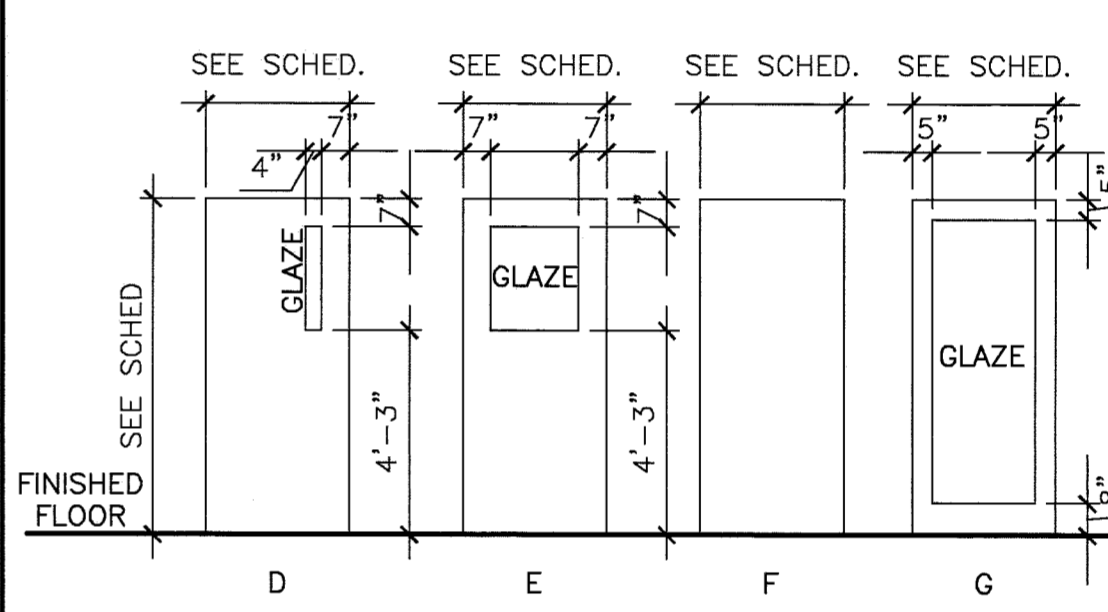
**A4 DOOR SCHEDULE**  
NTS \*

**GENERAL NOTES:**

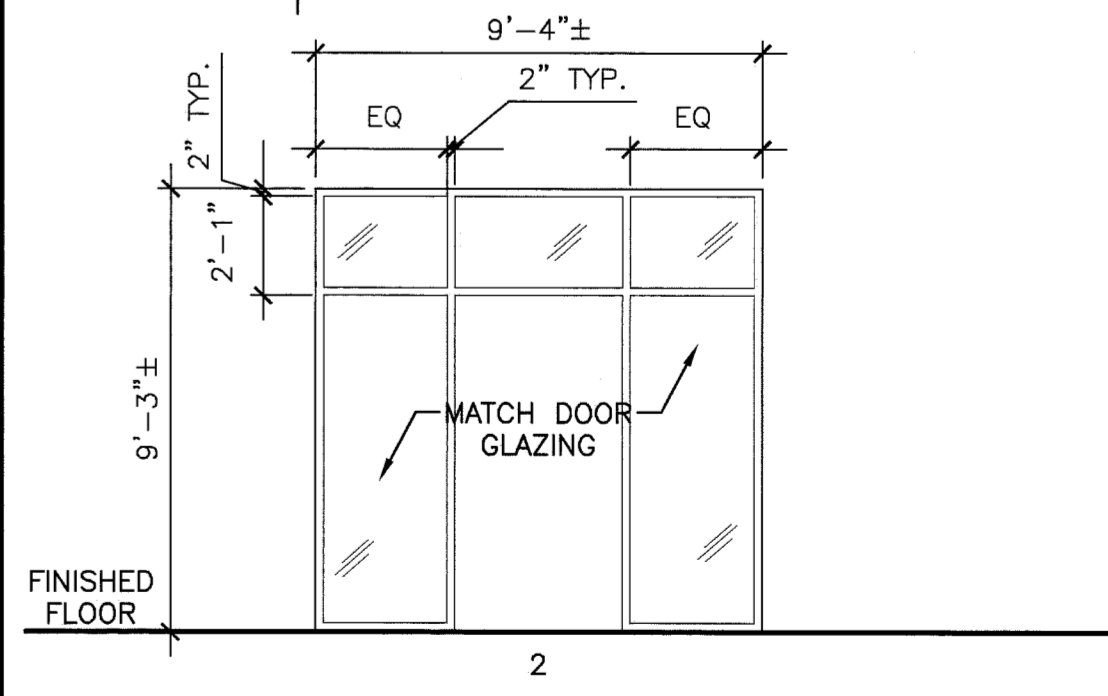
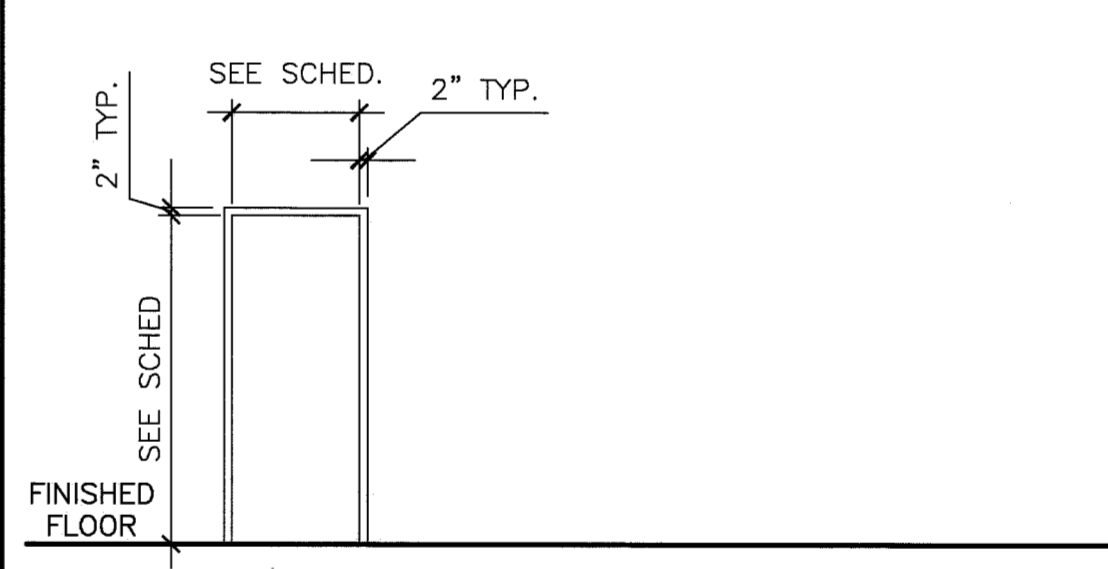
- DOOR ABBREVIATIONS
- DOOR NOTES

- SEE SPECIFICATIONS FOR HARDWARE SET DESCRIPTIONS.
- SEE TITLE SHEET G001 FOR STANDARD ABBREVIATIONS.
- ALL SWINGING DOORS TO BE 1-3/4" THICK (U.N.O.).
- ALL DOORS SHALL BE 3/4" UNDERCUT (TYPICAL) EXCEPT WHEN THERE IS A BOTTOM FRAME OR SILL THRESHOLD OR WHERE REQUIRED BY U.I. LISTING.
- ALL DOORS WITH BOTTOM FRAMES OR SILL THRESHOLDS SHALL HAVE MANUFACTURERS RECOMMENDED STANDARD UNDERCUT.
- GLAZING NOTED ON DOOR SCHEDULE IS FOR THE DOOR AND SIDELIGHTS IN THE FRAME (TYPICAL).

**DOOR ELEVATIONS**



**DOOR FRAME ELEVATIONS**



**GLAZING NOTES**

- GL-1 = 1" INSULATED TINTED GLASS
- GL-2 = 1" INSULATED TINTED GLASS (TEMPERED)
- GL-3 = 1/2" TEMPERED TINTED GLASS
- GL-4 = 1/2" TEMPERED CLEAR GLASS
- GL-5 = SECURITY GLASS

144 Fore Street/P.O. Box 618  
Portland, Maine 04104  
Tel: (207) 772-3846  
Fax: (207) 772-1070  
www.smartinc.com

ARCHITECTURE  
ENGINEERING  
PLANNING  
INTERIOR DESIGN  
COMMISSIONING

PROJECT NORTH

LICENSED ARCHITECT  
DAVID R. LAY  
No. 2502

DEPARTMENT OF  
VETERAN AFFAIRS - PORTLAND  
PORTLAND, MAINE

ISSUE FOR CONSTRUCTION  
9-01-10

GRAPHIC SCALE: 1" = 1'-0"

SCALE: AS NOTED

PROJECT MANAGER: DRL  
JC/DRAWN BY: TCM/CEB  
A/E OF RECORD: DRL  
CAD FILE: AE601-10022  
PROJECT NO: 10022  
DATE:

SHEET TITLE:  
**DOOR SCHEDULE &  
FRAME ELEVATIONS**

SHEET No. **AE601**  
© COPYRIGHT 2009 SMART INC.