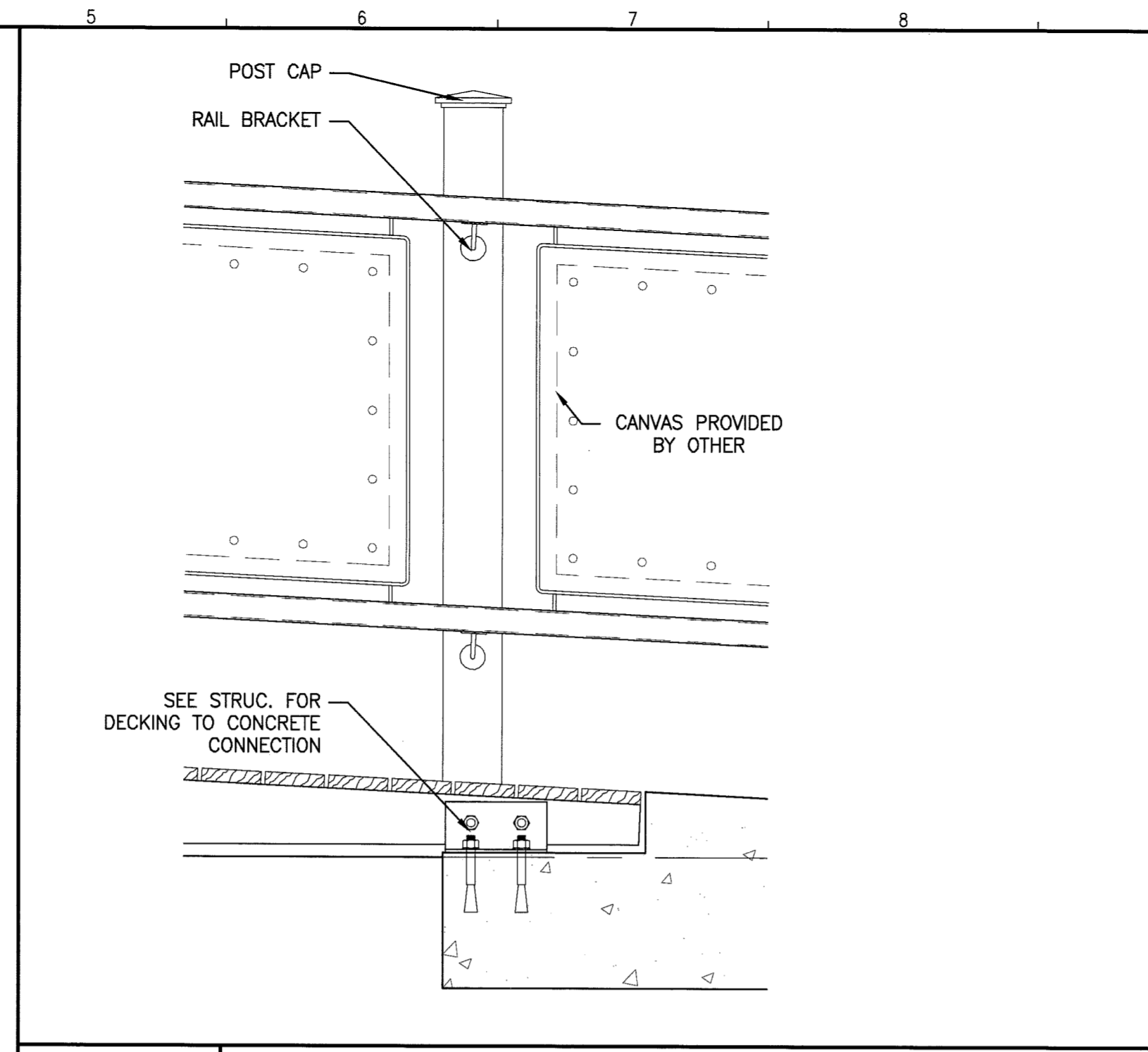
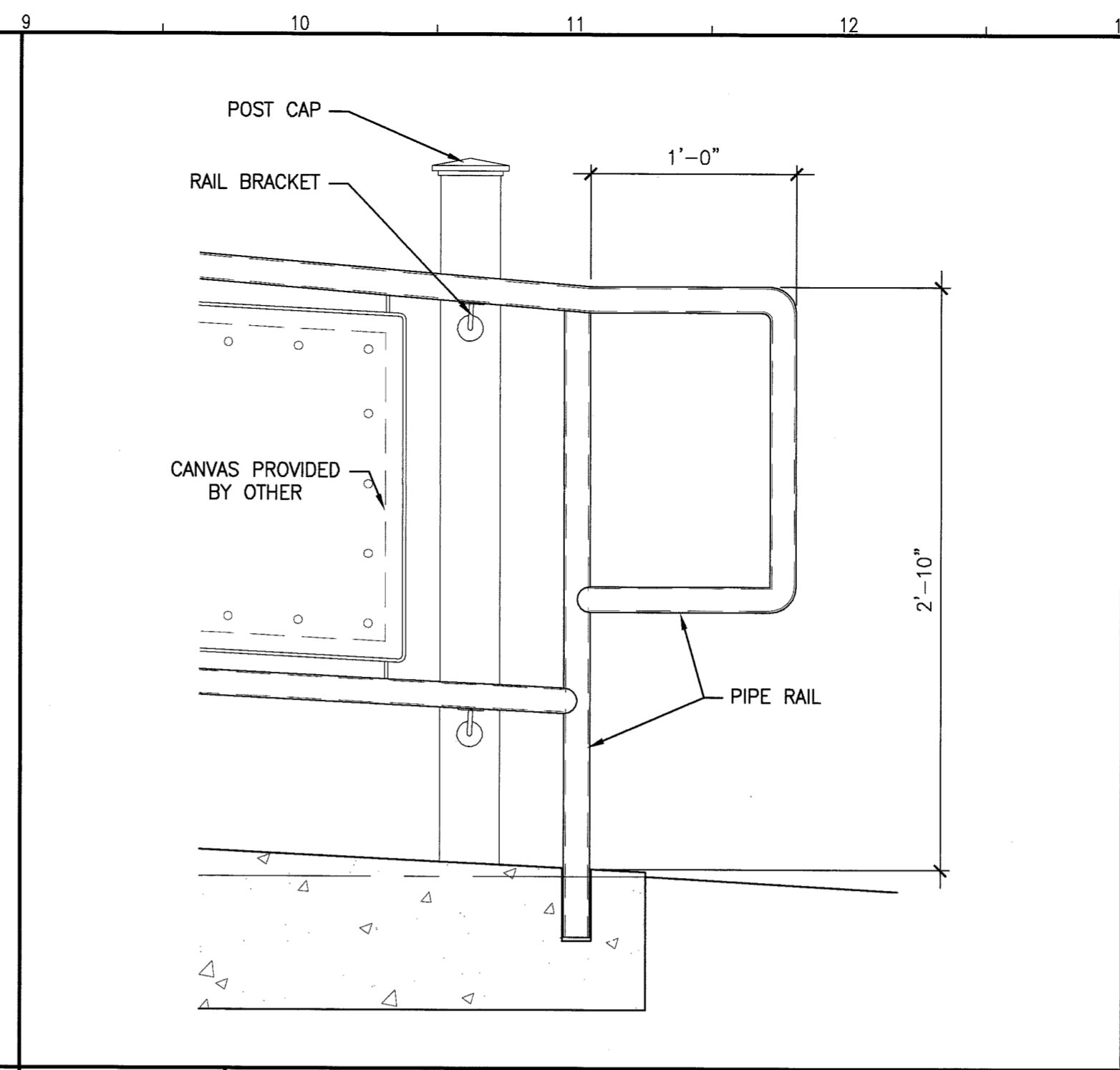


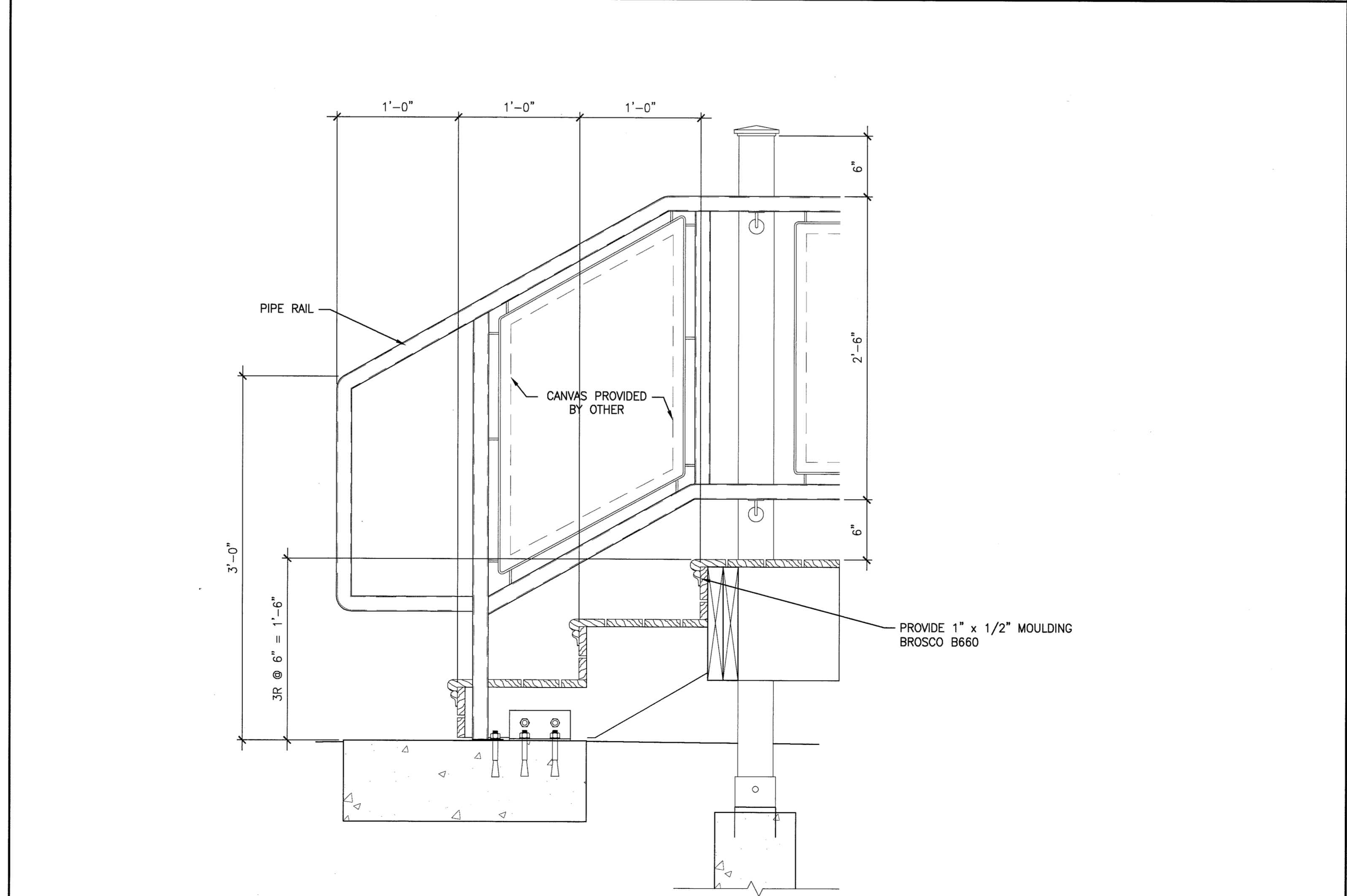
A1 ROOF ACCESS LADDER
1 1/2" = 1'-0" *



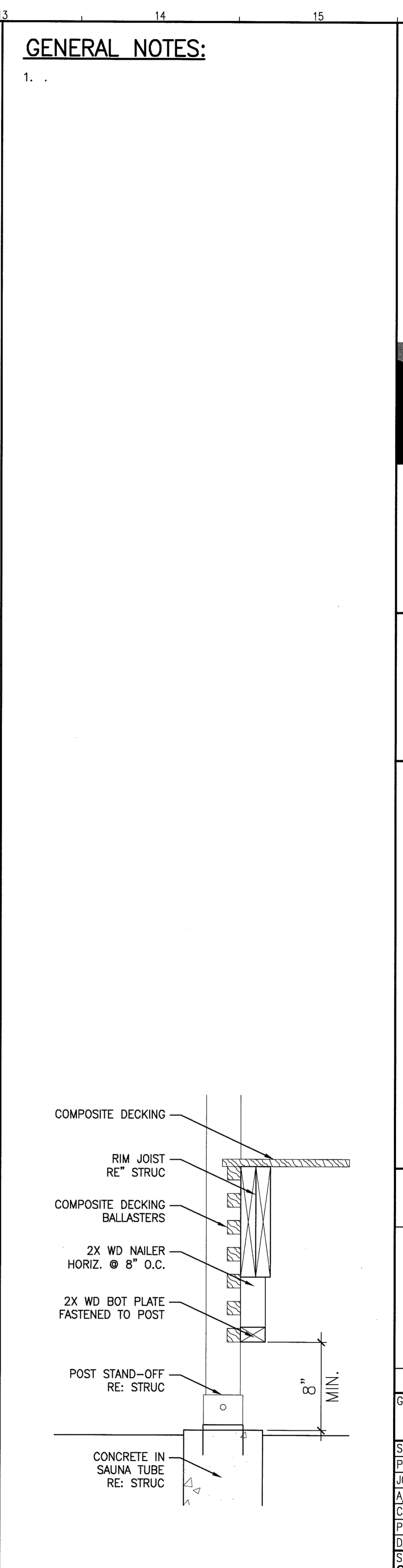
H5 ENTRY RAMP TRANSITION
1 1/2" = 1'-0" *



H9 ENTRY RAMP @ GRADE
1 1/2" = 1'-0" *



A4 ENTRY STAIR SECTION
1 1/2" = 1'-0" *



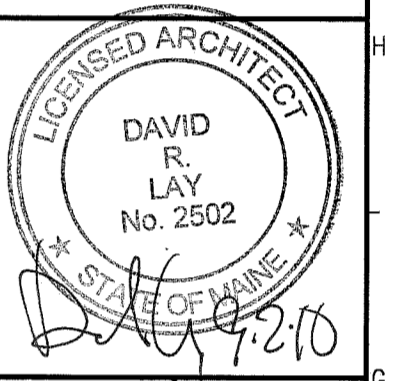
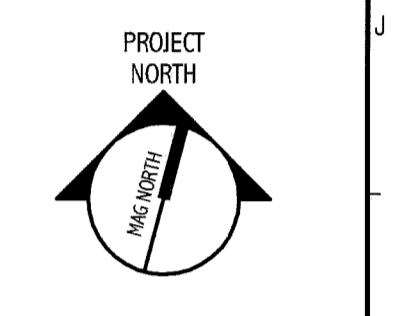
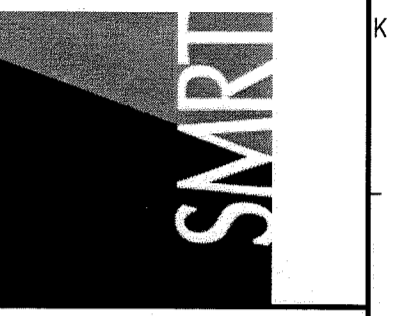
A13 LATTICE DETAIL
1 1/2" = 1'-0" *

GENERAL NOTES:

1.

144 Fors Street/P.O. Box 618
Portland, Maine 04104
tel. (207) 772-3846
fax (207) 772-1070
www.smartinc.com

ARCHITECTURE
ENGINEERING
PLANNING
INTERIOR DESIGN
COMMISSIONING



DEPARTMENT OF
VETERAN AFFAIRS - PORTLAND
PORTLAND, MAINE
ISSUE FOR CONSTRUCTION
9-01-10
CURRENT ISSUE STATUS:

REV	DESCRIPTION	DATE
0	ISSUE FOR CONSTRUCTION	9-01-10

GRAPHIC SCALE:
0" 1"

SCALE: AS NOTED
PROJECT MANAGER: DRL
JC/DRAWN BY: TCM/KMM
A/E OF RECORD: DRL
CAD FILE: AE503-10022
PROJECT NO: 10022
DATE: 8-09-10

SHEET TITLE:
**STAIR & RAMP
DETAILS**
SHEET No. **AE503**
© COPYRIGHT 2009 SMART INC.