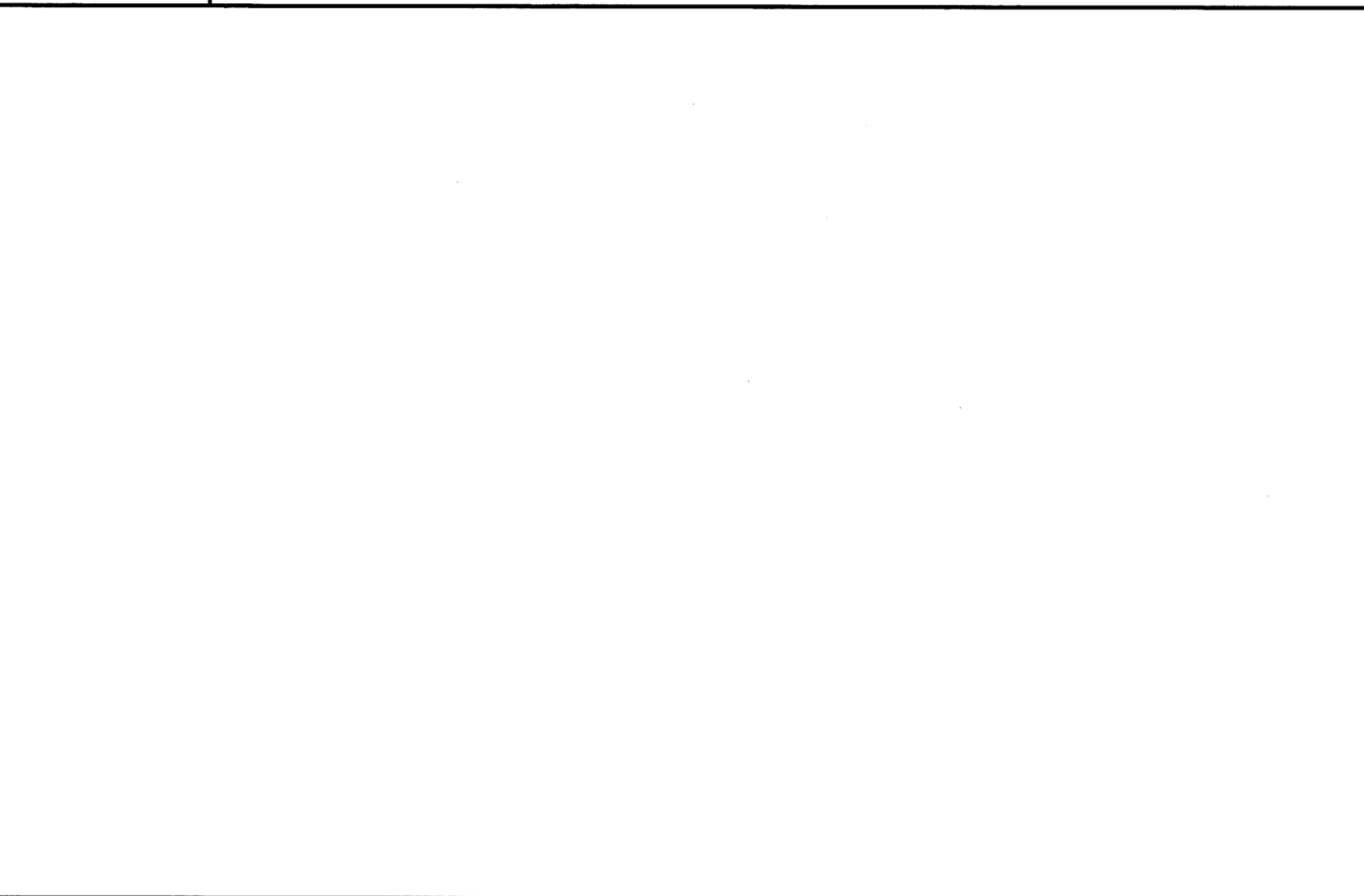
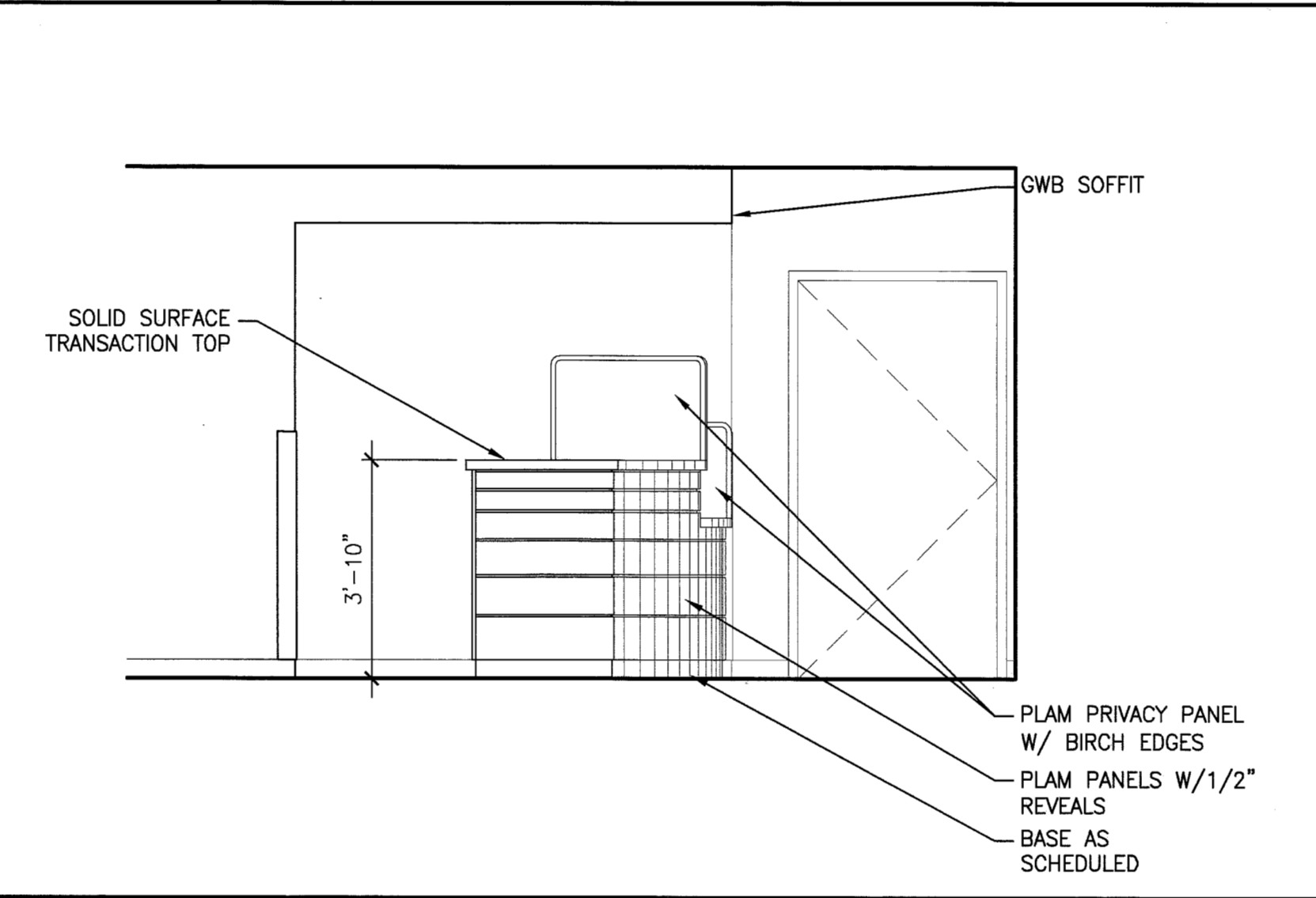
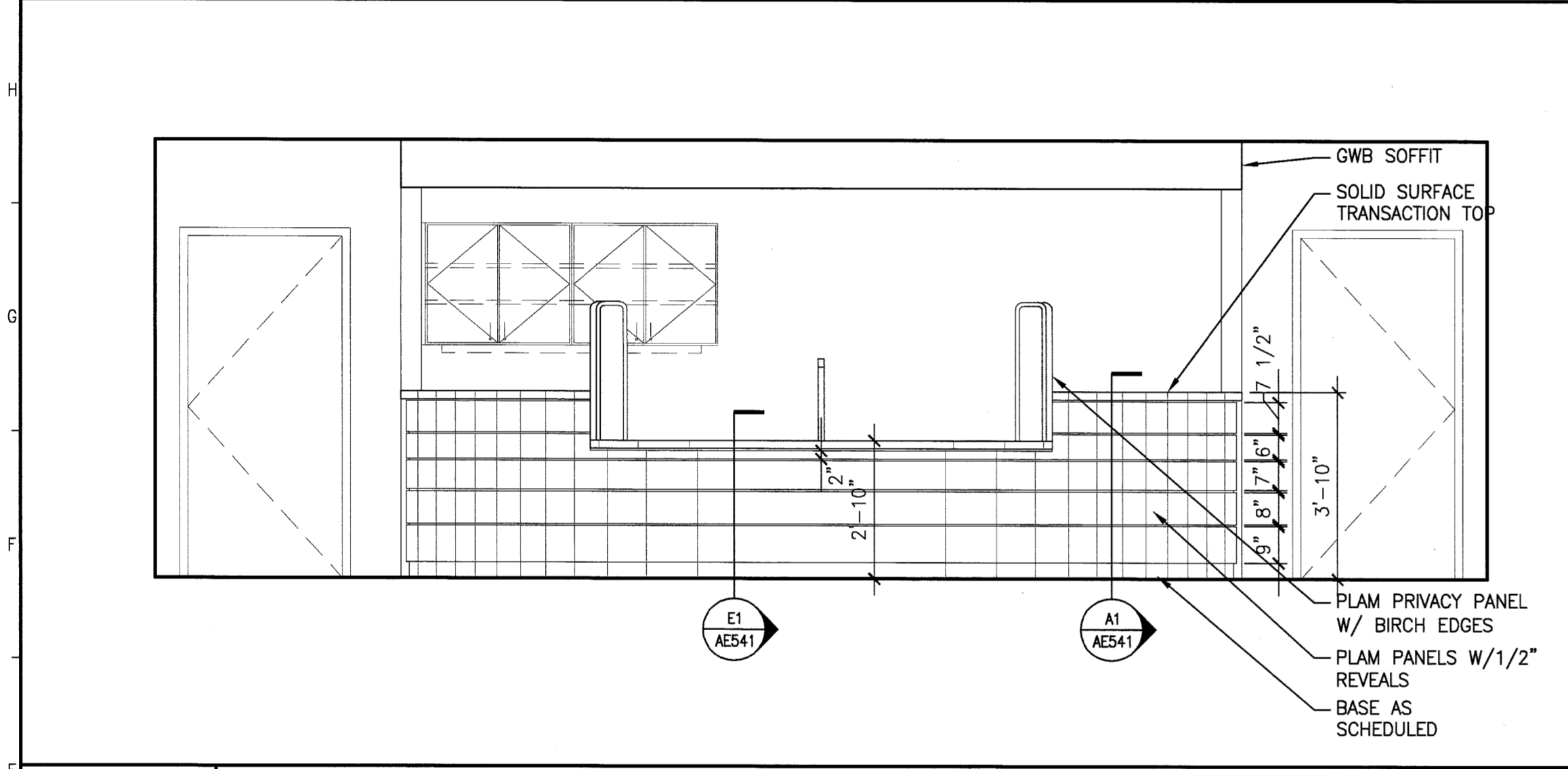


**J1** NURSE STATION 120  
3/8" = 1'-0" \*

**J7** NURSE STATION 120  
3/8" = 1'-0" \*

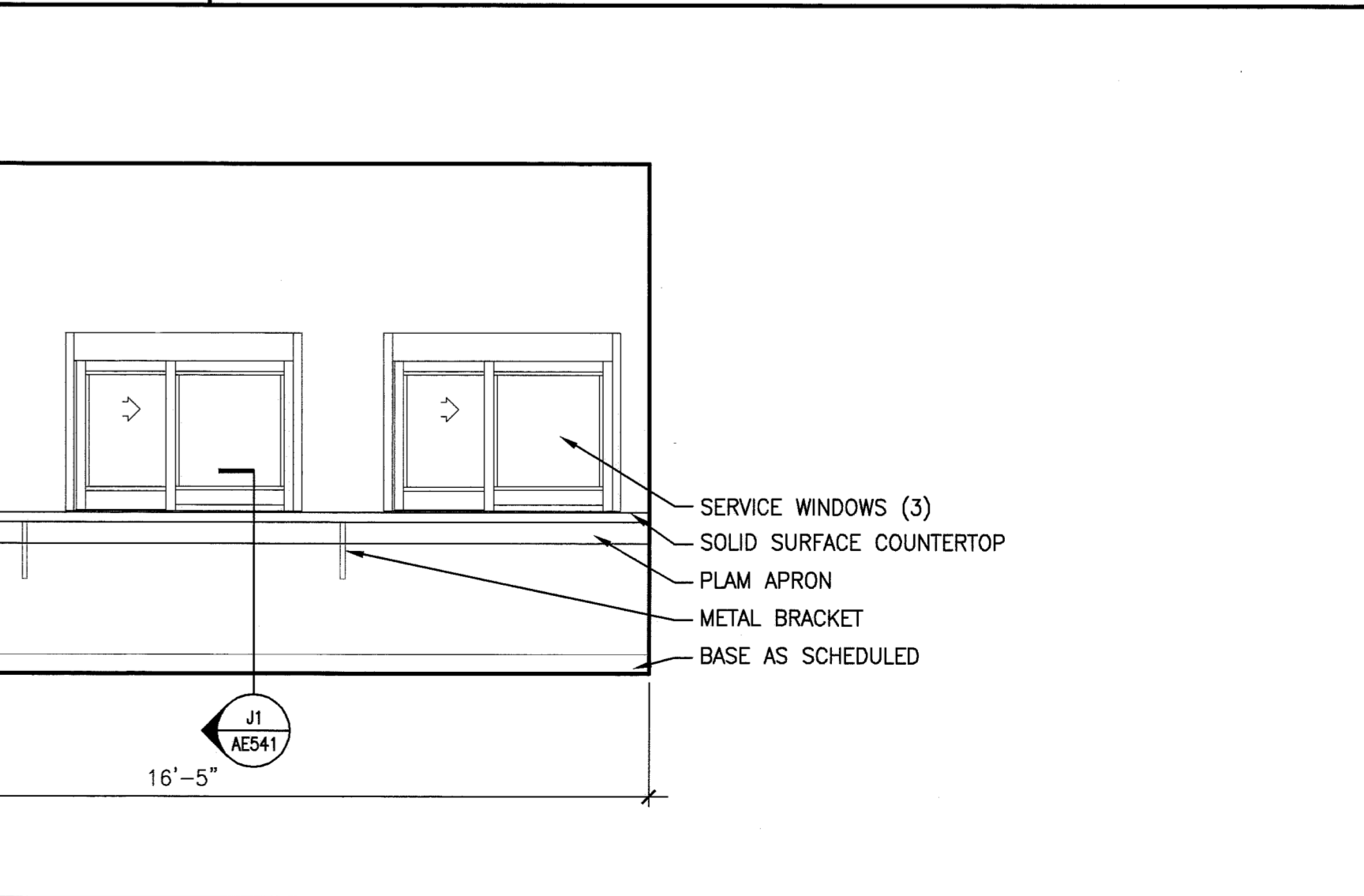
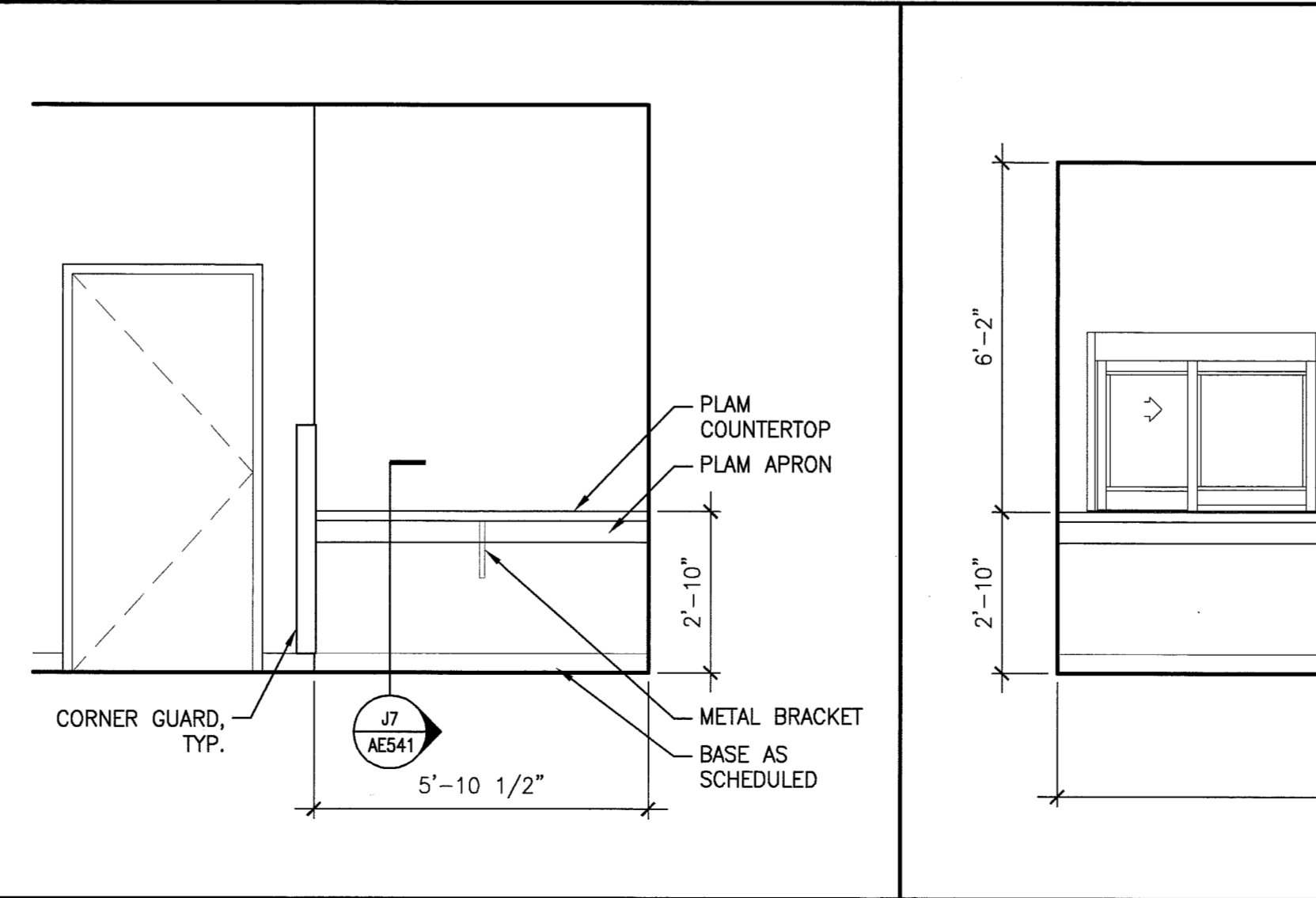
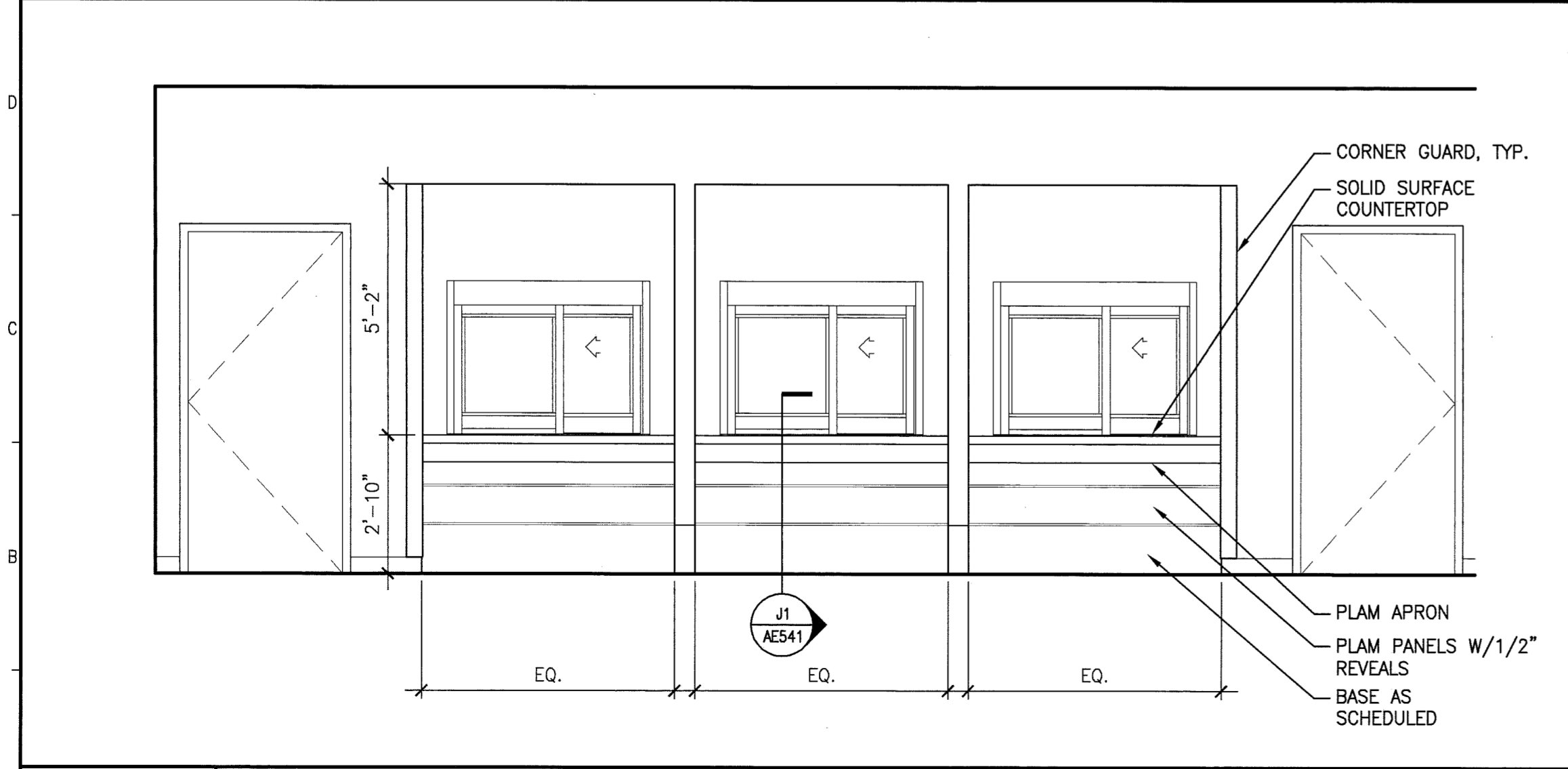
**J11** KITCHEN 122  
3/8" = 1'-0" \*



**E1** NURSE STATION 120  
3/8" = 1'-0" \*

**E7** NURSE STATION 120  
3/8" = 1'-0" \*

**E11** -  
- \*



**A1** WAITING 126  
3/8" = 1'-0" \*

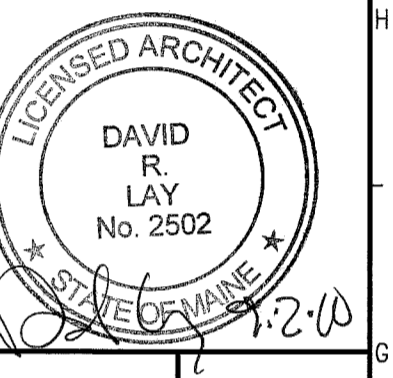
**A7** HEALTHY VET  
3/8" = 1'-0" \*

**A10** RECEPTION 125  
3/8" = 1'-0" \*

144 Fore Street/P.O. Box 618  
Portland, Maine 04104  
tel. (207) 772-3846  
fax. (207) 772-1070  
www.smrfinc.com

ARCHITECTURE  
ENGINEERING  
PLANNING  
INTERIOR DESIGN  
COMMISSIONING

**SMRT**



DEPARTMENT OF  
VETERAN AFFAIRS - PORTLAND  
PORTLAND, MAINE

ISSUE FOR CONSTRUCTION  
9-01-10

CURRENT ISSUE STATUS:

REV	DESCRIPTION	DATE
0	ISSUE FOR CONSTRUCTION	9-01-10

GRAPHIC SCALE:  
0" = 1"

SCALE: AS NOTED

PROJECT MANAGER: DRI  
JC/DRAWN BY: TCM/TCM  
A/E OF RECORD: DRI  
CAD FILE: AE311-10022  
PROJECT NO: 10022  
DATE:  
SHEET TITLE:  
INTERIOR ELEVATIONS

SHEET No. **AE211**  
© COPYRIGHT 2009 SMRT INC.