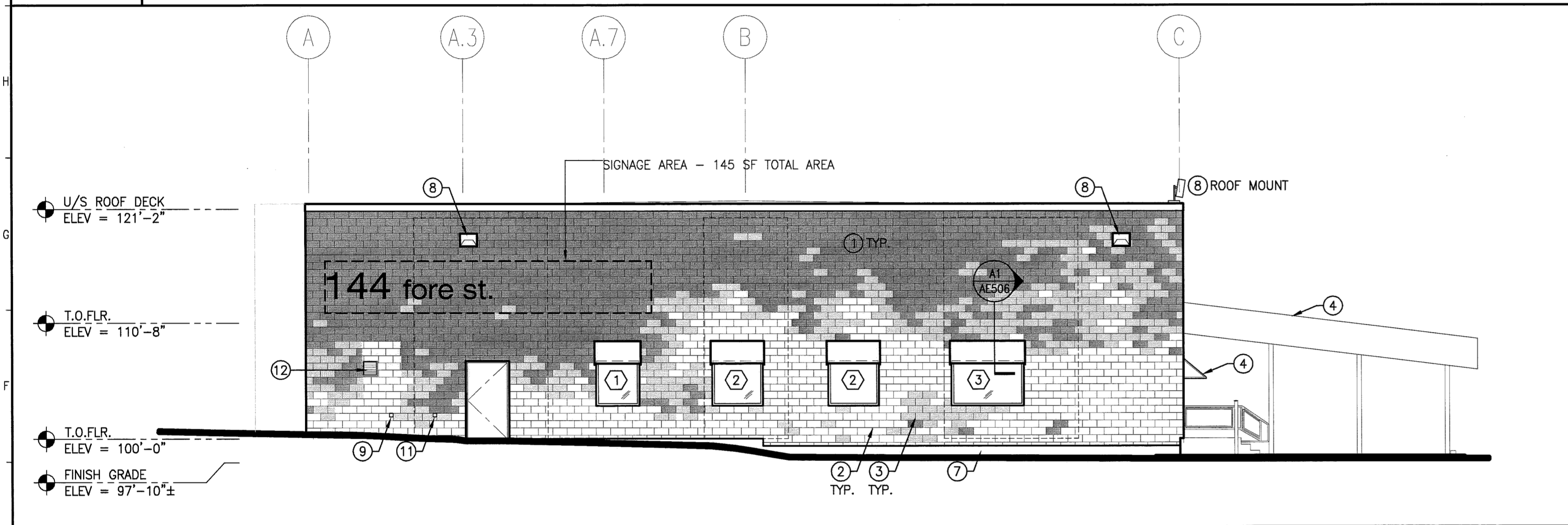


J1 EXTERIOR ELEVATION - NORTH

1/8" = 1'-0"



E1 EXTERIOR ELEVATION - WEST

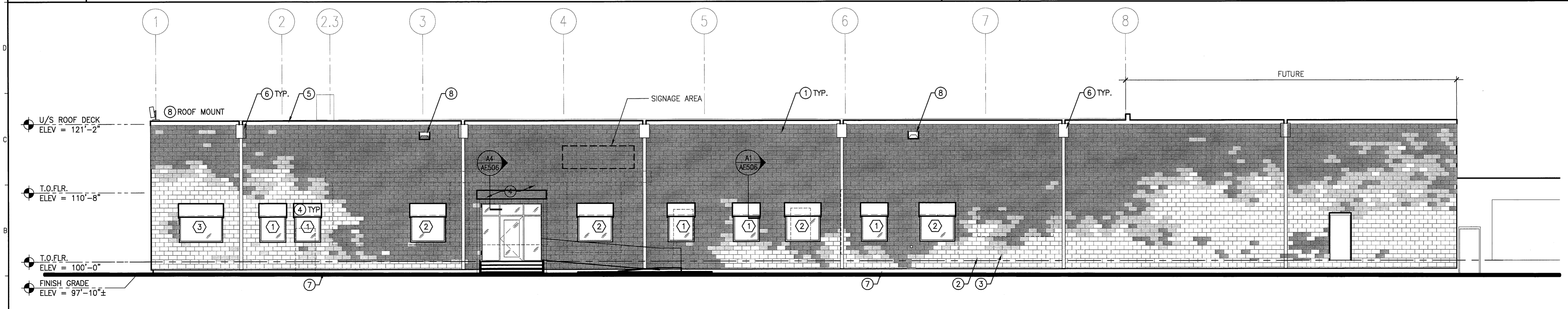
1/8" = 1'-0"

ELEVATION KEYNOTES:

- ① MEDAL SHINGLES (ZINC COLOR)
- ② MEDAL SHINGLES (LIGHT VALUE PAINT COLOR)
- ③ MEDAL SHINGLES (DARK VALUE PAINT COLOR)
- ④ CANVAS AWNING SEE A1 & A4/AE506
- ⑤ METAL FASCIA SYSTEM
- ⑥ DOWNSPOUT & CONDUCTOR HEAD
- ⑦ EXISTING FOUNDATION - PAINTED
- ⑧ LIGHT FIXTURE RE: ELECT.
- ⑨ HOSE BIB RE: MECHANICAL
- ⑩ LINE OF WINDOW HEAD
- ⑪ ELECTRICAL OUTLET RE: ELECT.
- ⑫ 16"x16" LOUVER

E10 ELEVATION KEYNOTES

NTS

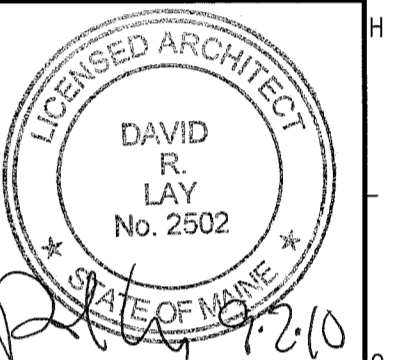


A1 EXTERIOR ELEVATION - SOUTH

1/8" = 1'-0"

144 Fore Street/P.O. Box 618
Portland, Maine 04104
tel. (207) 772-3846
fax. (207) 772-1070
www.smrinc.com

ARCHITECTURE
ENGINEERING
PLANNING
INTERIOR DESIGN
COMMISSIONING



DEPARTMENT OF
VETERAN AFFAIRS - PORTLAND
PORTLAND, MAINE

ISSUE FOR CONSTRUCTION
9-01-10

REV	DESCRIPTION	DATE
0	ISSUE FOR CONSTRUCTION	9-01-10

GRAPHIC SCALE:
0" 1"

SCALE: AS NOTED

PROJECT MANAGER: DRL
JC/DRAWN BY: TCM/TCM
A/E OF RECORD: DRL
CAD FILE: AE201-10022
PROJECT NO: 10022
DATE:

SHEET TITLE:
EXTERIOR
ELEVATIONS

SHEET No. AE201
© COPYRIGHT 2009 SMR INC.