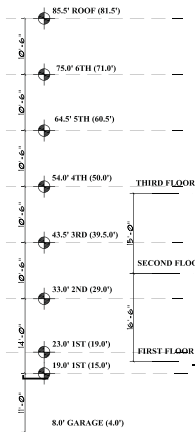




INDIA STREET ELEVATION
SCALE: 3/32"=1'-0"

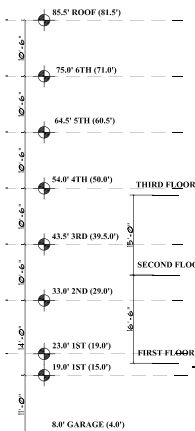


TOWNHOUSE WING ELEVATION
SCALE: 3/32"=1'-0"



INDIA STREET ELEVATION
SCALE: 3/32"=1'-0"

January 2007 Version



TOWNHOUSE WING ELEVATION
SCALE: 3/32"=1'-0"

The Architectural Team, Inc.

50 Commandant's Way
At Admiral's Hill
Chelsea, MA 02150
Telephone: (617) 889-4402
Facsimile: (617) 884-4329
www.architecturalteam.com

Design Development

Revision:

Architect of Record:

Drawn:

Checked:

Scale:
Key Plan:



Project Name:
Longfellow at Ocean Gateway

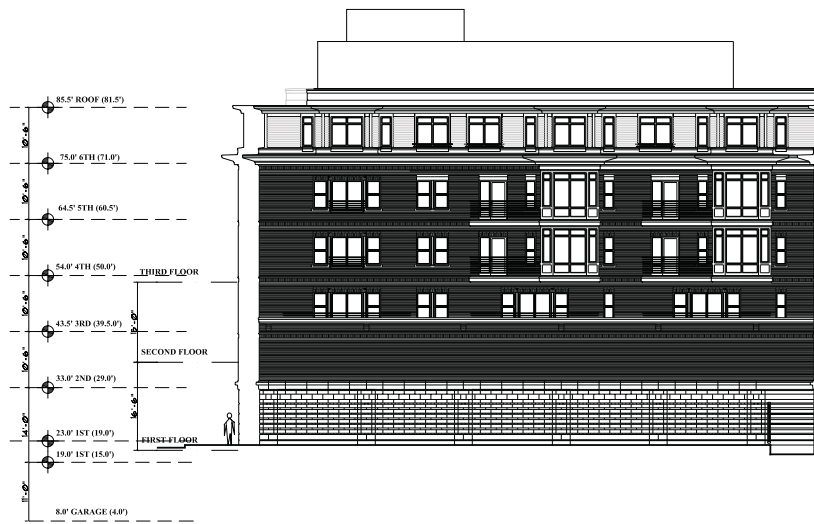
Portland, ME 04102

Sheet Name:
ELEVATION STUDY I

Project No.:
2727

Issue Date:
February 13, 2007

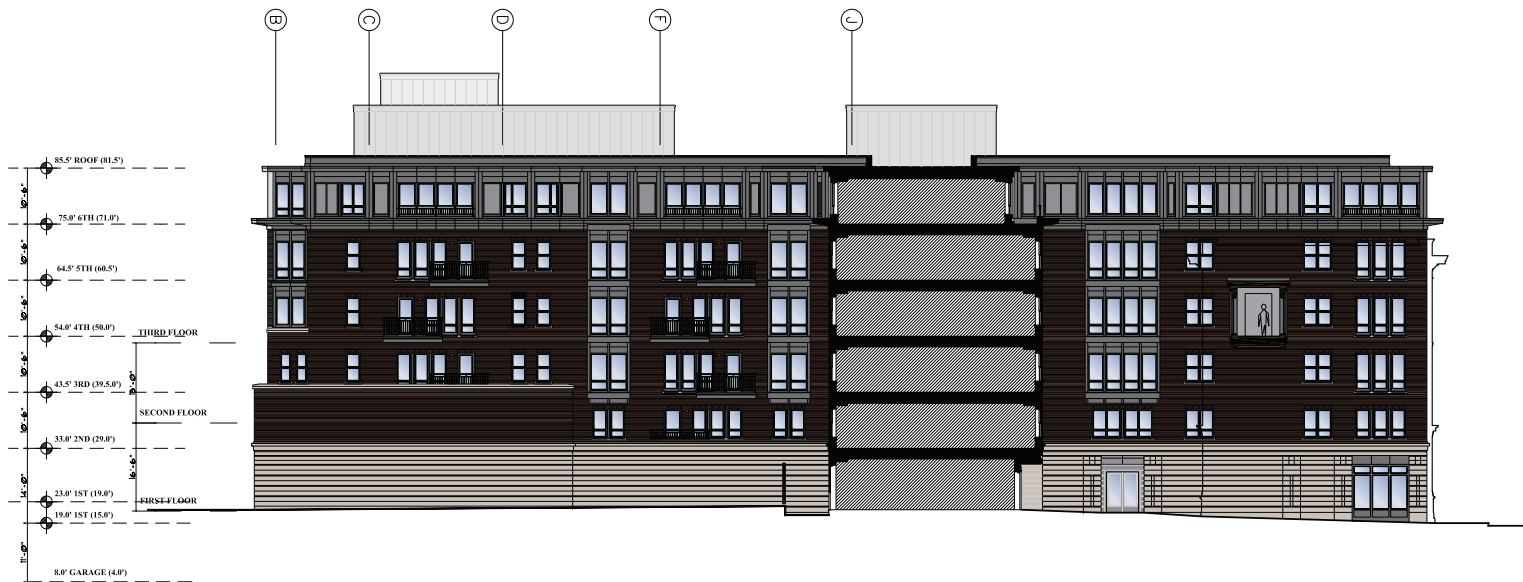
Sheet No.:
ELEV-S16



I SCALE: 3/32"=1'-0"



M SCALE: 3/64"=1'-0"



I WEST ELEVATION FROM PUMP STATION AND GRAD TRUNK BUILDING SCALE: 3/32"=1'-0"

The Architectural Team, Inc.

50 Commandant's Way
 At Admiral's Hill
 Chelsea, MA 02150
 Telephone: (617) 889-4402
 Facsimile: (617) 884-4329
 www.architecturalteam.com

Design Development

Revision:

Architect of Record:

Drawn:

Checked:

Scale:

Key Plan:



Project Name:
 Longfellow at
 Ocean Gateway

Portland, ME 04102

Sheet Name:
 ELEVATION
 STUDY 1

Project No:
 2727

Issue Date:
 February 13, 2007

Sheet No:
 ELEV-S17

LONGFELLOW AT OCEAN GATEWAY

PORTLAND, ME



COMMERCIAL STREET PLAZA

RIVERWALK LLC
DEVELOPER

THE ARCHITECTURAL TEAM, INC.
ARCHITECT
2.13.2007

LONGFELLOW AT OCEAN GATEWAY

PORTLAND, ME



HANCOCK STREET LOOKING NORTH

RIVERWALK LLC
DEVELOPER

THE ARCHITECTURAL TEAM, INC.
ARCHITECT
2.13.2007

LONGFELLOW AT OCEAN GATEWAY

PORTLAND, ME



FORE STREET LOOKING EAST

RIVERWALK LLC
DEVELOPER

THE ARCHITECTURAL TEAM, INC.
ARCHITECT
2.13.2007

LONGFELLOW AT OCEAN GATEWAY

PORTLAND, ME



CORNER OF INDIA AND COMMERCIAL STREET

RIVERWALK LLC
DEVELOPER

THE ARCHITECTURAL TEAM, INC.
ARCHITECT
2.13.2007

LONGFELLOW AT OCEAN GATEWAY

PORTLAND, ME



VIEW FROM FIFTH FLOOR BALCONY

RIVERWALK LLC
DEVELOPER

THE ARCHITECTURAL TEAM, INC.
ARCHITECT
2.13.2007