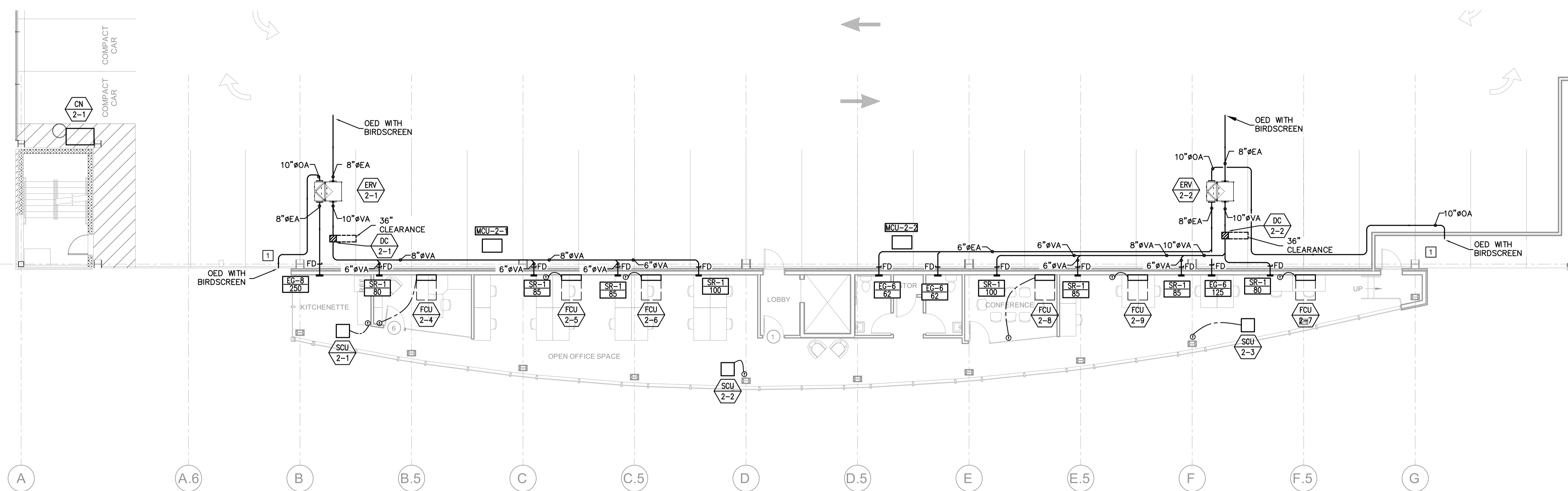
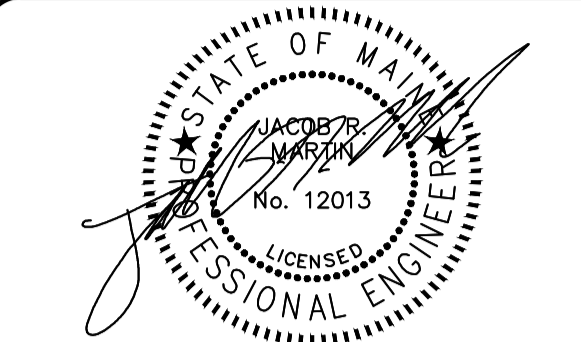


KEYED NOTES:

- 1 PROVIDE OPEN-ENDED DUCT FOR INTAKE AT PERIMETER OF BUILDING W/ BIRD SCREEN COVER. PROVIDE DUAL 2" FILTER RACK FOR FUTURE MERV 8 AND CARBON FILTER IF NECESSARY. LOW POINT DRAIN AND INSPECTION DOORS RECOMMENDED.

JOHNSON & JORDAN
MECHANICAL CONTRACTORS
18 MUSSEY ROAD
SCARBOROUGH, ME 04074
TEL: (207) 883-8345



REV.	DESCRIPTION	DATE

ISSUE STATUS:
ISSUED FOR CONSTRUCTION 3-28-19

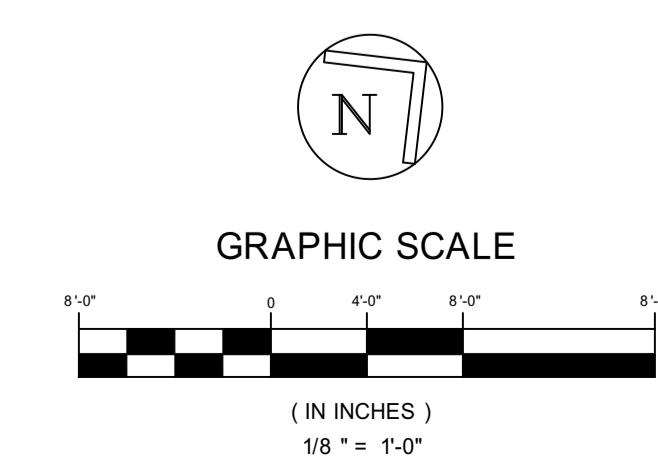
PROJECT:
OCEAN GATEWAY ADDITION
PORTLAND, ME

SHEET TITLE:
2ND FLOOR MECH PLANS

DATE: 3-28-19	PROJECT# 17150
DRAWN: MAC	CHECKED: JRM
SCALE: 1/8" = 1'-0"	

SHEET #
M-102

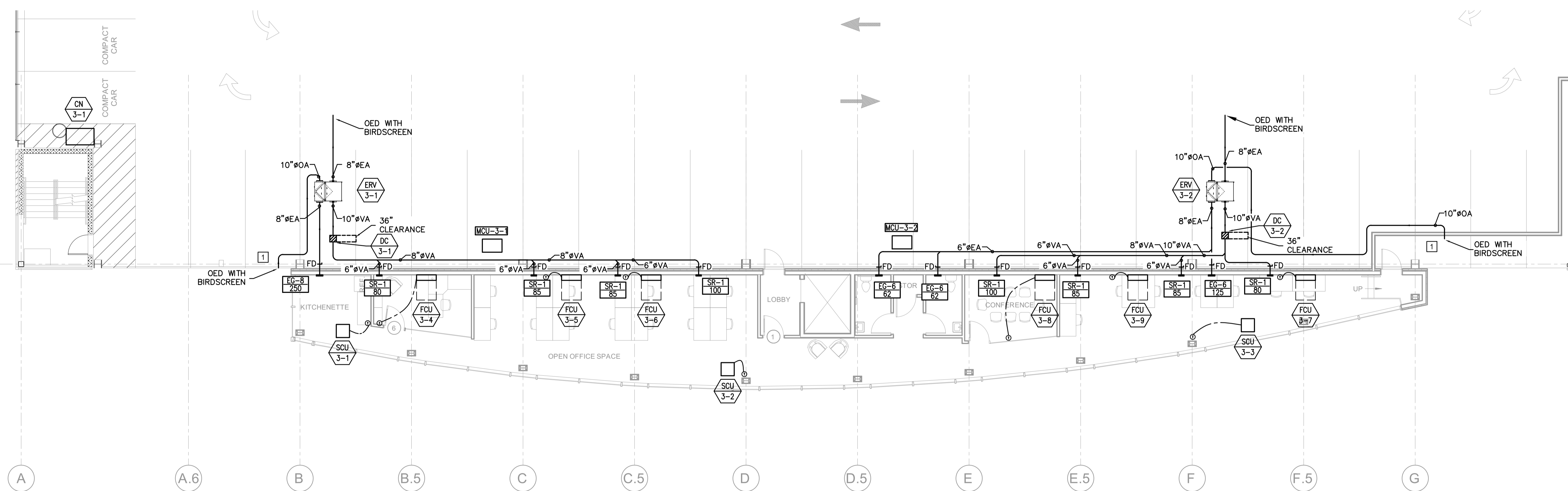
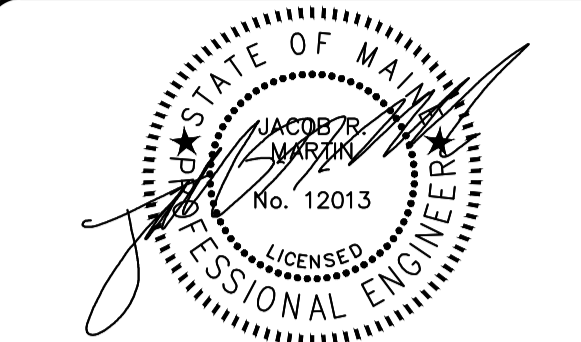
CITY OF PORTLAND
APPROVED SITE PLAN
Subject to Conditions of Approval and Standard Conditions
DATE of APPROVAL 9.26.16; As amended 4.24.19
PLANNER Caitlin Cameron
PROJECT NO. 2016-131



KEYED NOTES:

- 1 PROVIDE OPEN-ENDED DUCT FOR INTAKE AT PERIMETER OF BUILDING W/ BIRD SCREEN COVER. PROVIDE DUAL 2" FILTER RACK FOR FUTURE MERV 8 AND CARBON FILTER IF NECESSARY. LOW POINT DRAIN AND INSPECTION DOORS RECOMMENDED.

JOHNSON & JORDAN
MECHANICAL CONTRACTORS
18 MUSSEY ROAD
SCARBOROUGH, ME 04074
TEL: (207) 883-8345



REV.	DESCRIPTION	DATE

ISSUE STATUS:
ISSUED FOR CONSTRUCTION 3-28-19

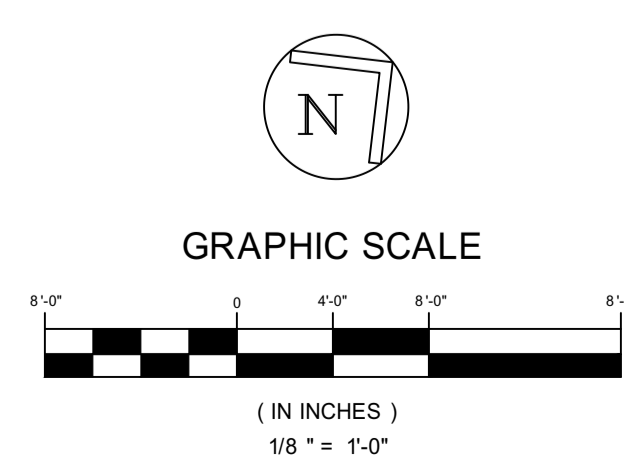
PROJECT:
OCEAN GATEWAY ADDITION
PORTLAND, ME

SHEET TITLE:
3RD FLOOR MECH PLANS

DATE: 3-28-19	PROJECT# 17150
DRAWN: MAC	CHECKED: JRM
SCALE: 1/8" = 1'-0"	

SHEET #
M-103

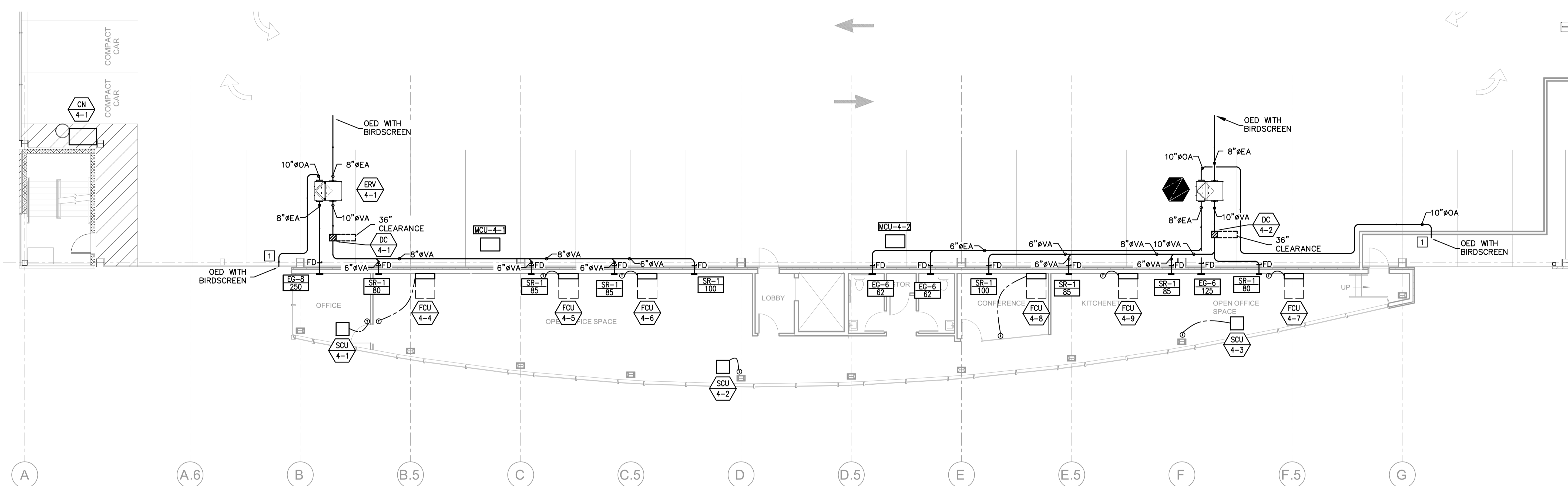
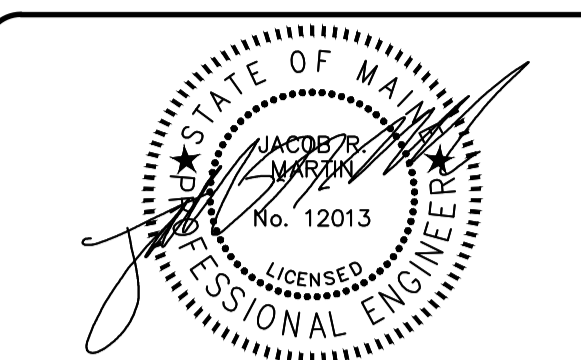
CITY OF PORTLAND
APPROVED SITE PLAN
Subject to Conditions of Approval and Standard Conditions
DATE of APPROVAL 9.26.16; As amended 4.24.19
PLANNER Caitlin Cameron
PROJECT NO. 2016-131



KEYED NOTES:

- 1 PROVIDE OPEN-ENDED DUCT FOR INTAKE AT PERIMETER OF BUILDING W/ BIRD SCREEN COVER. PROVIDE DUAL 2" FILTER RACK FOR FUTURE MERV 8 AND CARBON FILTER IF NECESSARY. LOW POINT DRAIN AND INSPECTION DOORS RECOMMENDED.

JOHNSON & JORDAN
MECHANICAL CONTRACTORS
 18 MUSSEY ROAD
 SCARBOROUGH, ME 04074
 TEL: (207) 883-8345



REV.	DESCRIPTION	DATE

ISSUE STATUS:
ISSUED FOR CONSTRUCTION 3-28-19

PROJECT:
OCEAN GATEWAY ADDITION
 PORTLAND, ME

SHEET TITLE:
4TH FLOOR MECH PLANS

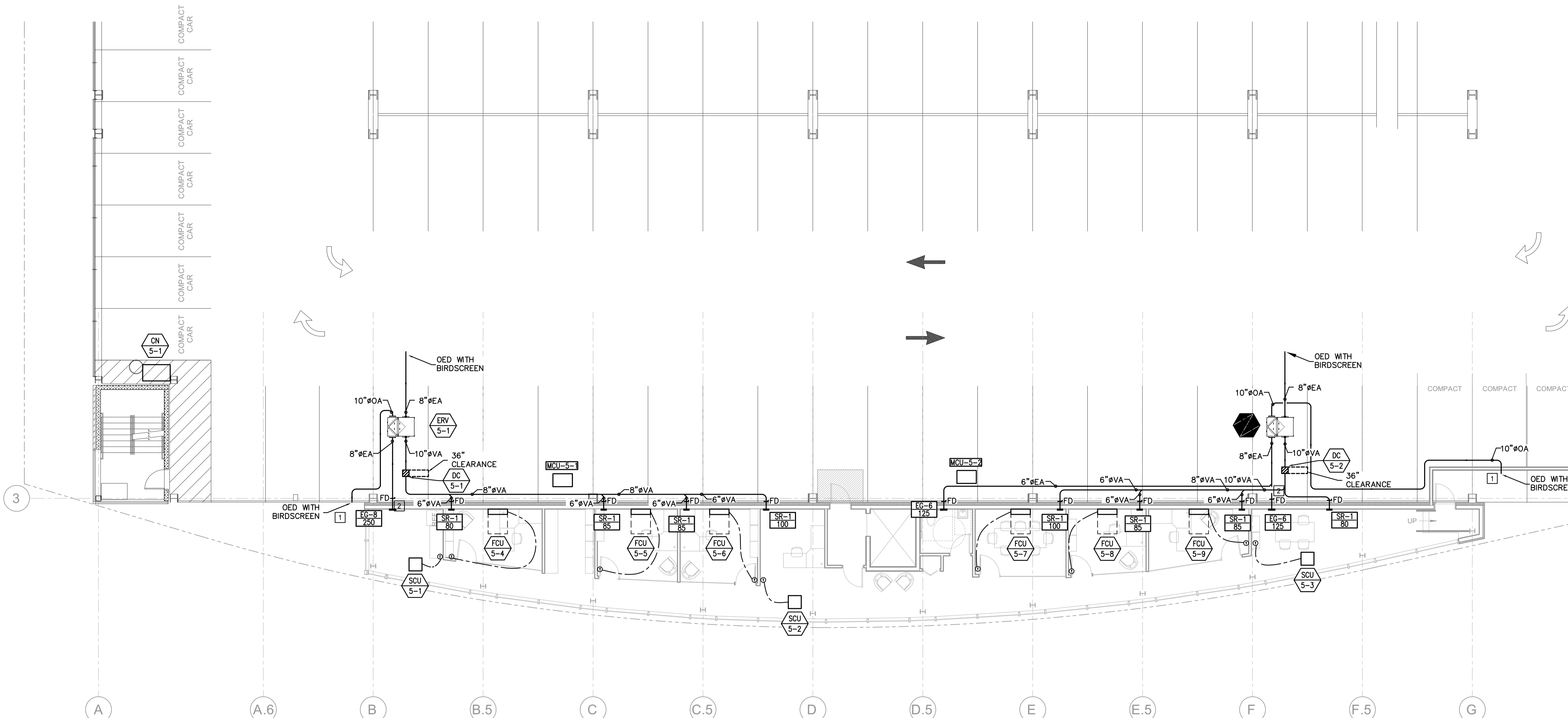
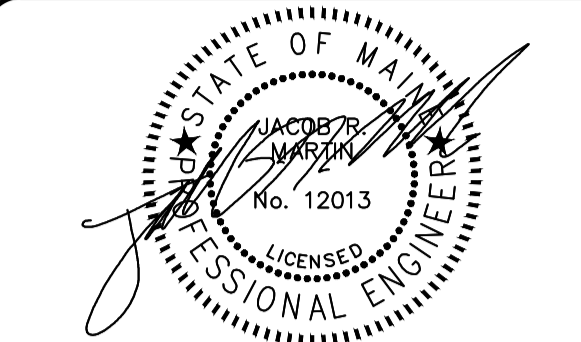
DATE: 3-28-19	PROJECT# 17150
DRAWN: MAC	CHECKED: JRM
SCALE: 1/8" = 1'-0"	

SHEET #
M-104

KEYED NOTES:

- 1 PROVIDE OPEN-ENDED DUCT FOR INTAKE AT PERIMETER OF BUILDING W/ BIRD SCREEN COVER. PROVIDE DUAL 2" FILTER RACK FOR FUTURE MERV 8 AND CARBON FILTER IF NECESSARY. LOW POINT DRAIN AND INSPECTION DOORS RECOMMENDED.
- 2 TRANSITION DUCT TO RECTANGLE TO FIT ABOVE BEAM.

JOHNSON & JORDAN
MECHANICAL CONTRACTORS
 18 MUSSEY ROAD
 SCARBOROUGH, ME 04074
 TEL. (207) 883-8345



REV.	DESCRIPTION	DATE

ISSUE STATUS:
ISSUED FOR CONSTRUCTION 3-28-19

PROJECT:
OCEAN GATEWAY ADDITION
 PORTLAND, ME

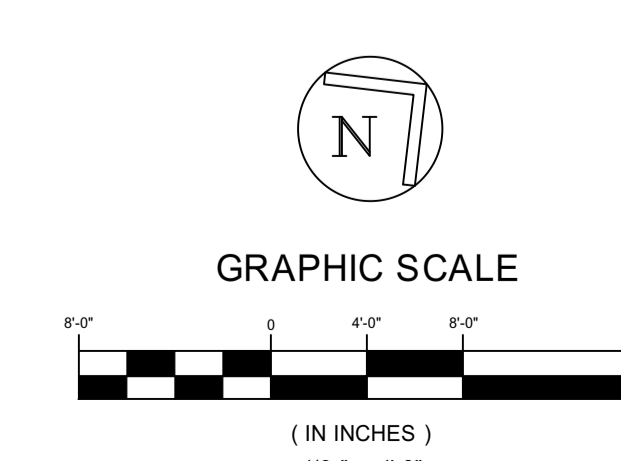
SHEET TITLE:
5TH FLOOR MECH PLANS

DATE: 3-28-19	PROJECT# 17150
DRAWN: MAC	CHECKED: JRM
SCALE: 1/8" = 1'-0"	

SHEET #
M-105

CITY OF PORTLAND
APPROVED SITE PLAN
 Subject to Conditions of Approval
 and Standard Conditions

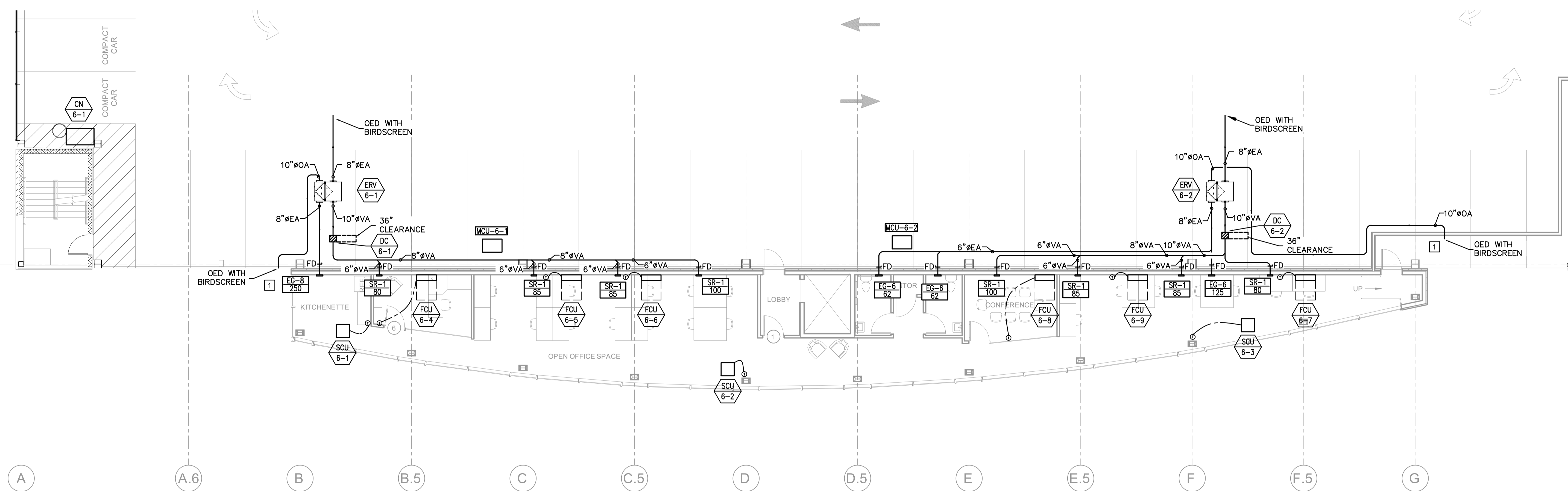
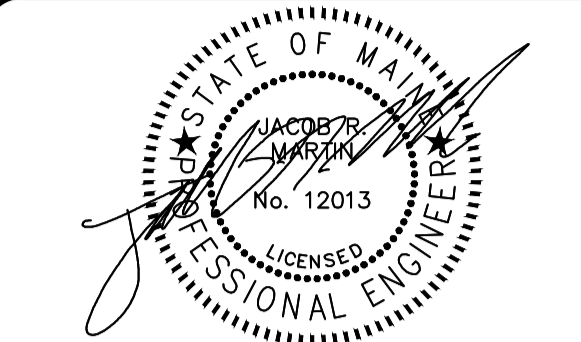
DATE OF APPROVAL 9.26.16; As amended 4.24.19
 PLANNER Caitlin Cameron
 PROJECT NO. 2016-131



KEYED NOTES:

- 1 PROVIDE OPEN-ENDED DUCT FOR INTAKE AT PERIMETER OF BUILDING W/ BIRD SCREEN COVER. PROVIDE DUAL 2" FILTER RACK FOR FUTURE MERV 8 AND CARBON FILTER IF NECESSARY. LOW POINT DRAIN AND INSPECTION DOORS RECOMMENDED.

JOHNSON & JORDAN
MECHANICAL CONTRACTORS
 18 MUSSEY ROAD
 SCARBOROUGH, ME 04074
 TEL: (207) 883-8345



REV.	DESCRIPTION	DATE

ISSUE STATUS:
ISSUED FOR CONSTRUCTION 3-28-19

PROJECT:
OCEAN GATEWAY ADDITION
 PORTLAND, ME

SHEET TITLE:
6TH FLOOR MECH PLANS

DATE: 3-28-19	PROJECT# 17150
DRAWN: MAC	CHECKED: JRM
SCALE: 1/8" = 1'-0"	

SHEET #
M-106

CITY OF PORTLAND
APPROVED SITE PLAN
 Subject to Conditions of Approval and Standard Conditions

DATE of APPROVAL 9.26.16; As amended 4.24.19
 PLANNER Caitlin Cameron
 PROJECT NO. 2016-131

