

019-A-001-001

1-1 India St, Portland, ME

The Longfellow at Ocean Gateway

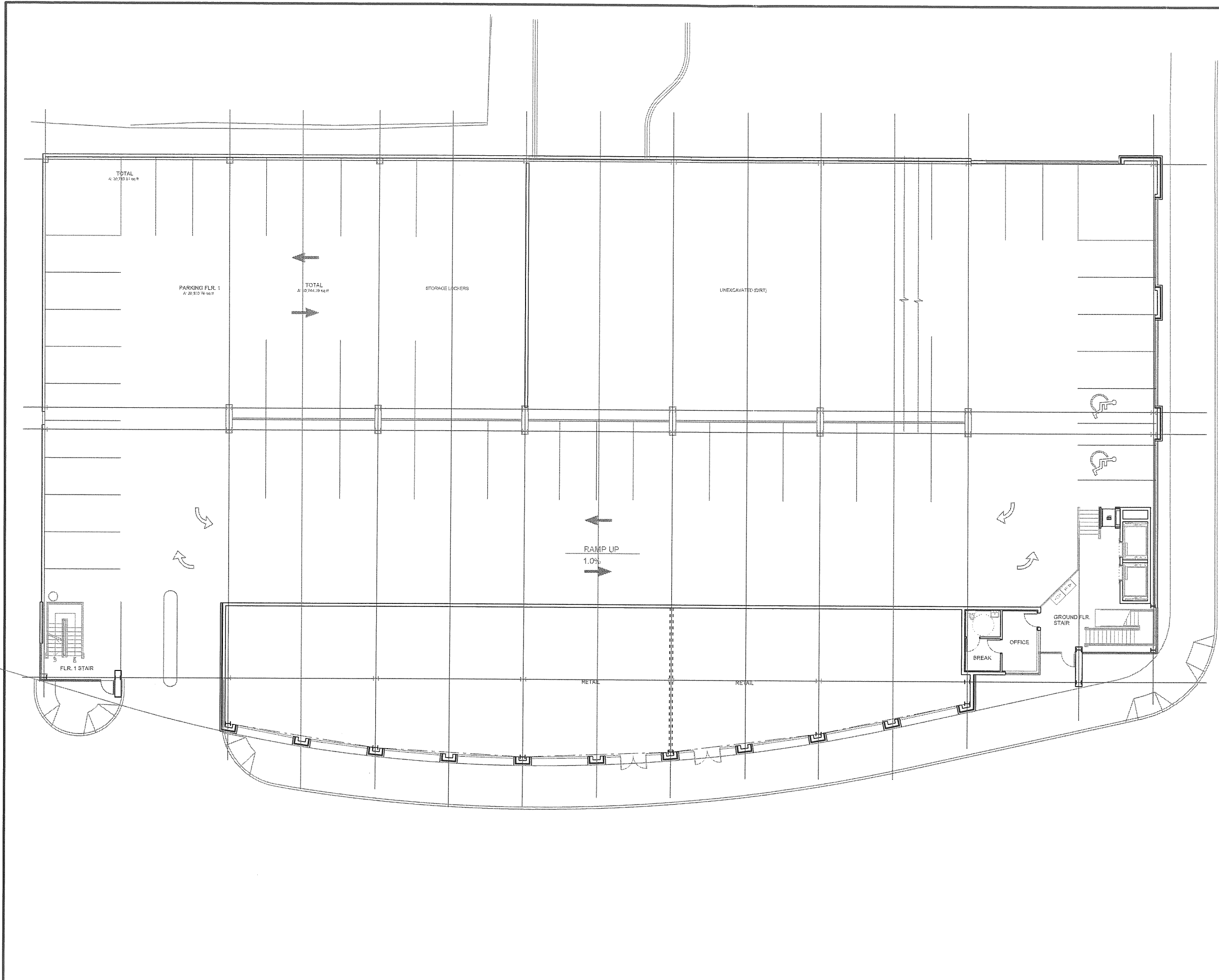
Riverwalk, LLC





LONGFELLOW GARAGE

November 1, 2006



<p>Scott Simons Architects 78 York Street Portland, Maine 04101 phone 207 772 4655 fax 207 628 4655</p>	
<p>THIS DRAWING IS THE PROPERTY OF SCOTT SIMONS ARCHITECTS AND IS NOT TO BE COPIED OR REPRODUCED IN PART OR WHOLE</p>	
<p>PROJECT</p> <p>OCEAN-GATEWAY PARKING GARAGE</p>	
<p>MIDDLE STREET PORTLAND, MAINE</p>	
<p>TITLE</p> <p>GROUND FLOOR PLAN</p>	
<p>STATUS:</p> <p>REVISED PLAN</p>	
<p>DATE: Nov 1, 2008</p>	<p>REVISION / DATE:</p>
<p>SCALE: 1/8" = 1'-0"</p>	
<p>PROJECT NO. 2005-0161</p>	
<p>DRAWN BY:</p>	<p>© Scott Simons Architects</p>
<p>DWG NO.</p>	<p>A-100</p>



VIEW FROM ABOVE COMMERCIAL STREET

 **THE LONGFELLOW / Residences and Retail**

RIVERWALK LLC

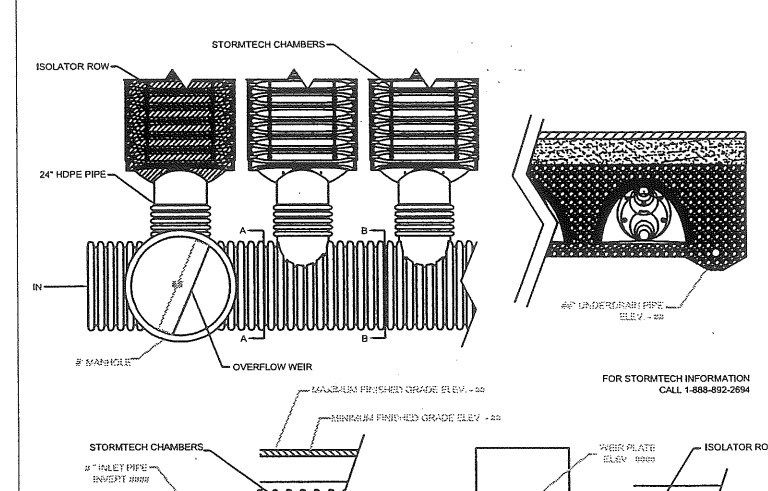
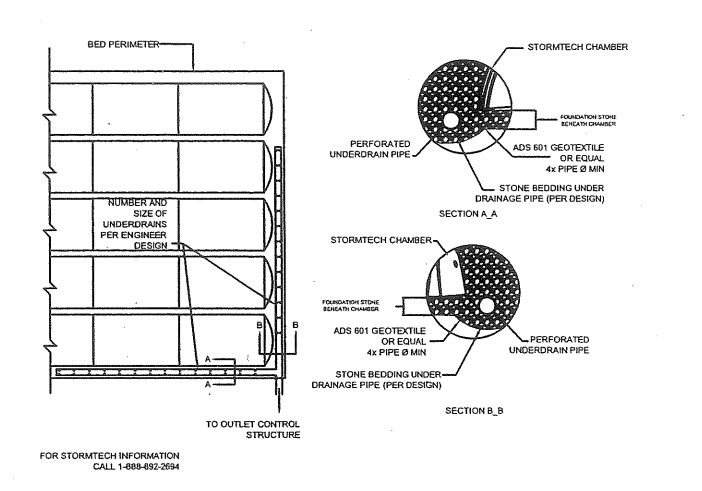
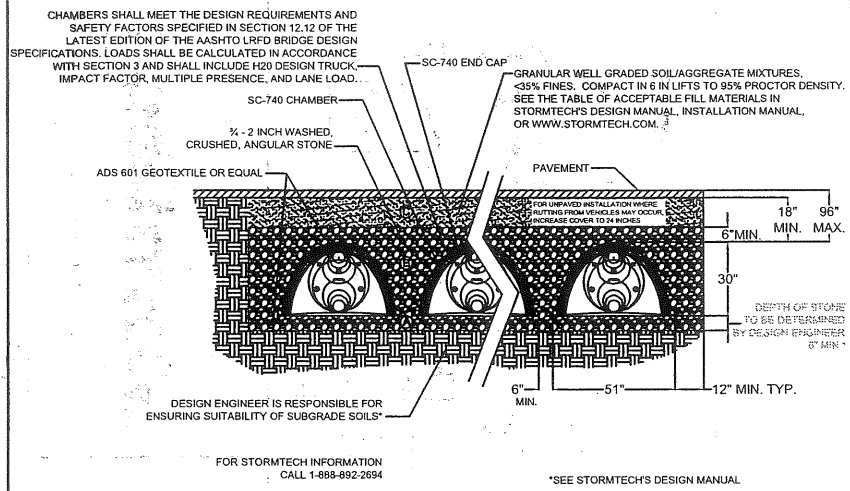
THE ARCHITECTURAL TEAM, INC.
SCHEMATIC PLAN - JANUARY 27, 2006

PORTLAND, MAINE



LONGFELLOW GARAGE
25 INDIA OFFICES
FEBRUARY 7, 2006

VIEW FROM FORE & INDIA STREET



SC-740 TYPICAL CROSS SECTION

STORMTECH UNDERDRAIN DETAIL

STORMTECH ELEVATIONS

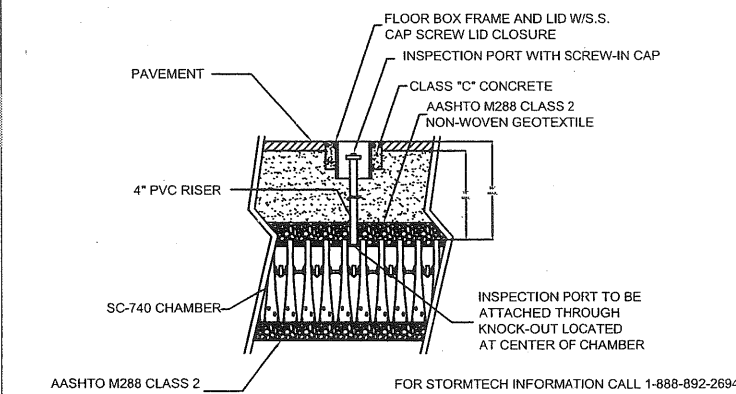
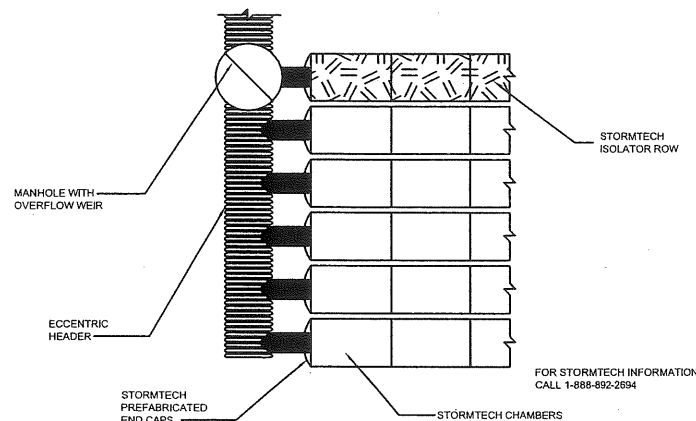
TECHNICAL DETAILS

ACCEPTABLE FILL MATERIALS
STORMTECH SC-740 CHAMBER SYSTEMS

MATERIAL LOCATION	DESCRIPTION	AASHTO M43 DESIGNATION	AASHTO M145 DESIGNATION	COMPACTION/DENSITY REQUIREMENT
FILL MATERIAL FROM 18" TO GRADE ABOVE CHAMBERS	ANY SOIL/ROCK MATERIALS, NATIVE SOILS OR PER ENGINEER'S PLANS. CHECK PLANS FOR PAVEMENT SUBGRADE REQUIREMENTS.	N/A	N/A	PREPARE PER ENGINEER'S PLANS. PAVED INSTALLATIONS MAY HAVE STRING MATERIAL AND PREPARATION REQUIREMENTS.
FILL MATERIAL FOR 6" TO 18" ELEVATION ABOVE CHAMBERS (24" FOR UNPAVED INSTALLATIONS)	GRANULAR WELL-GRADED SOIL/AGGREGATE MIXTURES, <math>< 35\% \text{ FINES}</math>.	3, 357, 4, 467, 5, 56, 57, 6, 67, 68, 7, 78, 8, 89, 9, 10	A-1, A-2, A-3	COMPACT IN 6" LIFTS TO A MINIMUM 95% STANDARD PROCTOR DENSITY. ROLLER GROSS VEHICLE WEIGHT NOT TO EXCEED 12,000 LBS. DYNAMIC FORCE NOT TO EXCEED 20,000 LBS.
EMBEDMENT STONE SURROUNDING AND TO A 6" ELEVATION ABOVE CHAMBERS	WASHED ANGULAR STONE WITH THE MAJORITY OF PARTICLES BETWEEN 1/2" - 2" INCH	3, 357, 4, 467, 5, 56, 57	N/A	NO COMPACTION REQUIRED
FOUNDATION STONE BELOW CHAMBERS	WASHED ANGULAR STONE WITH THE MAJORITY OF PARTICLES BETWEEN 1/2" - 2" INCH	3, 357, 4, 467, 5, 56, 57	N/A	PLATE COMPACT OR ROLL TO ACHIEVE A 95% STANDARD PROCTOR DENSITY

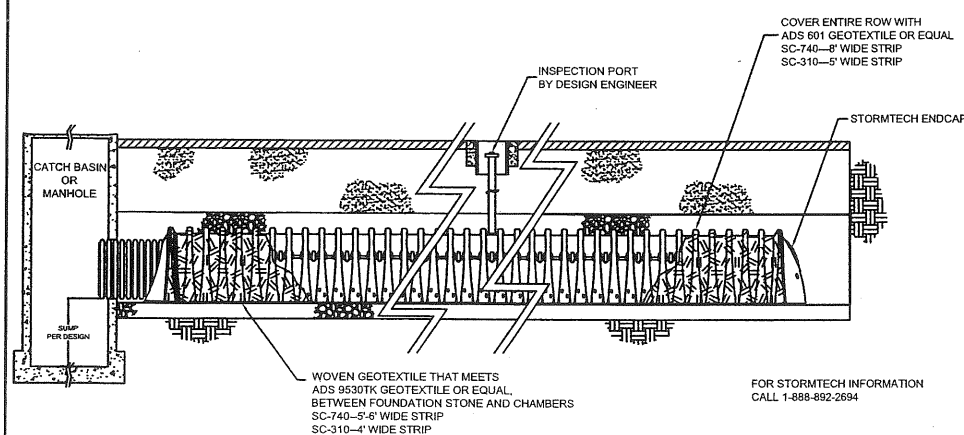
- NOTES:
- ALL DESIGN SPECIFICATIONS FOR STORMTECH CHAMBERS SHALL BE IN ACCORDANCE WITH THE STORMTECH DESIGN MANUAL.
 - THE INSTALLATION OF STORMTECH CHAMBERS SHALL BE IN ACCORDANCE WITH THE LATEST STORMTECH INSTALLATION INSTRUCTIONS.
 - THE CONTRACTOR IS ADVISED TO REVIEW AND UNDERSTAND THE INSTALLATION INSTRUCTIONS PRIOR TO BEGINNING SYSTEM INSTALLATION. CALL 1-888-892-2694 OR VISIT WWW.STORMTECH.COM TO RECEIVE A COPY OF THE LATEST STORMTECH INSTALLATION INSTRUCTIONS.
 - CHAMBERS SHALL MEET THE DESIGN REQUIREMENTS AND SAFETY FACTORS SPECIFIED IN SECTION 12.12 OF THE LATEST EDITION OF THE AASHTO LRFD BRIDGE DESIGN SPECIFICATIONS. LOADS SHALL BE CALCULATED IN ACCORDANCE WITH SECTION 3 AND SHALL INCLUDE H20 DESIGN TRUCK, IMPACT FACTOR, MULTIPLE PRESENCE, AND LANE LOAD.

STORMTECH ACCEPTABLE FILL MATERIALS

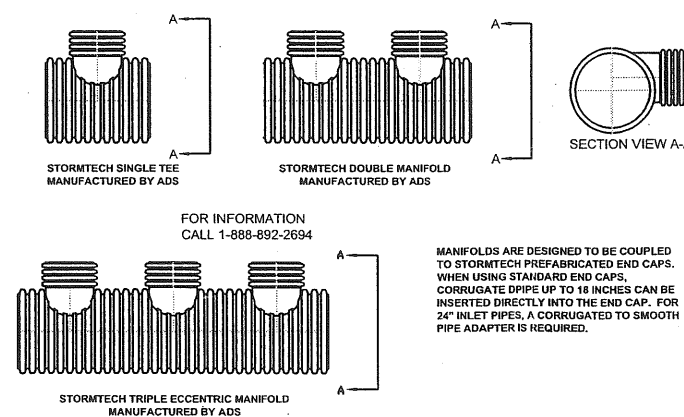


STORMTECH INSPECTION PORT DETAIL

STORMTECH ISOLATOR ROW MANIFOLD DETAIL



STORMTECH ISOLATOR ROW DETAIL



STUB SIZE	48"	42"	36"	30"	24"	18"	15"	12"	10"	8"
48"	AVAIL	AVAIL	AVAIL	AVAIL	AVAIL	AVAIL	-	-	-	-
42"	AVAIL	AVAIL	AVAIL	AVAIL	AVAIL	AVAIL	-	-	-	-
36"	AVAIL	AVAIL	AVAIL	AVAIL	AVAIL	AVAIL	-	-	-	-
30"	AVAIL	AVAIL	AVAIL	AVAIL	AVAIL	AVAIL	-	-	-	-
24"	AVAIL	AVAIL	AVAIL	AVAIL	AVAIL	AVAIL	-	-	-	-
18"	AVAIL	AVAIL	AVAIL	AVAIL	AVAIL	AVAIL	-	-	-	-
15"	AVAIL	AVAIL	AVAIL	AVAIL	AVAIL	AVAIL	-	-	-	-
12"	AVAIL	AVAIL	AVAIL	AVAIL	AVAIL	AVAIL	-	-	-	-
10"	AVAIL	AVAIL	AVAIL	AVAIL	AVAIL	AVAIL	-	-	-	-
8"	AVAIL	AVAIL	AVAIL	AVAIL	AVAIL	AVAIL	-	-	-	-

AVAIL - STANDARD HEADERS AVAILABLE

ADS MANIFOLD DETAILS

STORMTECH CHAMBER LAYOUT TO BE PLACED HERE

FIELDS IN RED MUST BE REVIEWED AND MODIFIED BY DESIGNING ENGINEER WITH PROJECT SPECIFIC DATA

CHAMBERS SHALL MEET THE DESIGN REQUIREMENTS AND SAFETY FACTORS SPECIFIED IN SECTION 12.12 OF THE LATEST EDITION OF THE AASHTO LRFD BRIDGE DESIGN SPECIFICATIONS. LOADS SHALL BE CALCULATED IN ACCORDANCE WITH SECTION 3 AND SHALL INCLUDE H20 DESIGN TRUCK, IMPACT FACTOR, MULTIPLE PRESENCE, AND LANE LOAD.

STORMTECH SC-740 CHAMBER LAYOUT



PROJECT NAME

REVISIONS	DATE

STORMTECH, LLC
20 BEAVER RD, SUITE 104
WETHERSFIELD, CT 06109
tel. 888-892-2694
fax 866-328-8401
WWW.STORMTECH.COM

DRAWING TITLE

SITE PLAN

STORMTECH SC-740 CHAMBER DETAIL SHEET	
SAVED AS	
DRAWN BY	
SCALE	
DATE	
PROJECT NO.	
DRAWING NO.	