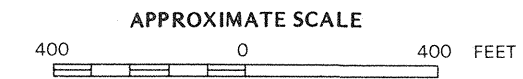
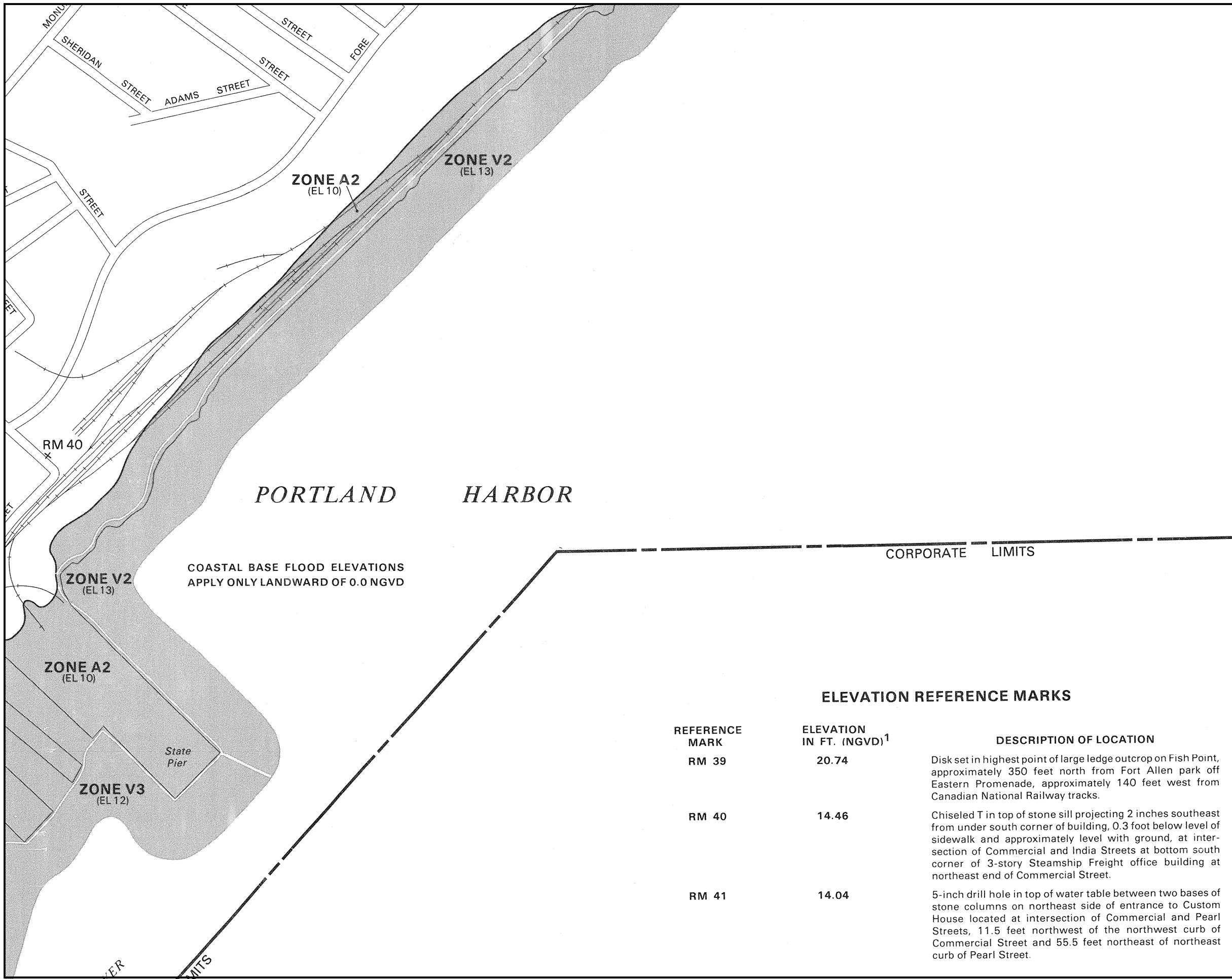


APPENDIX A: LOCATION, TAX, & FEMA MAPS



NATIONAL FLOOD INSURANCE PROGRAM

**FIRM
FLOOD INSURANCE RATE MAP**

**CITY OF
PORTLAND, MAINE
CUMBERLAND COUNTY**

PANEL 14 OF 17
(SEE MAP INDEX FOR PANELS NOT PRINTED)

**COMMUNITY-PANEL NUMBER
230051 0014 B**

**EFFECTIVE DATE:
JULY 17, 1986**



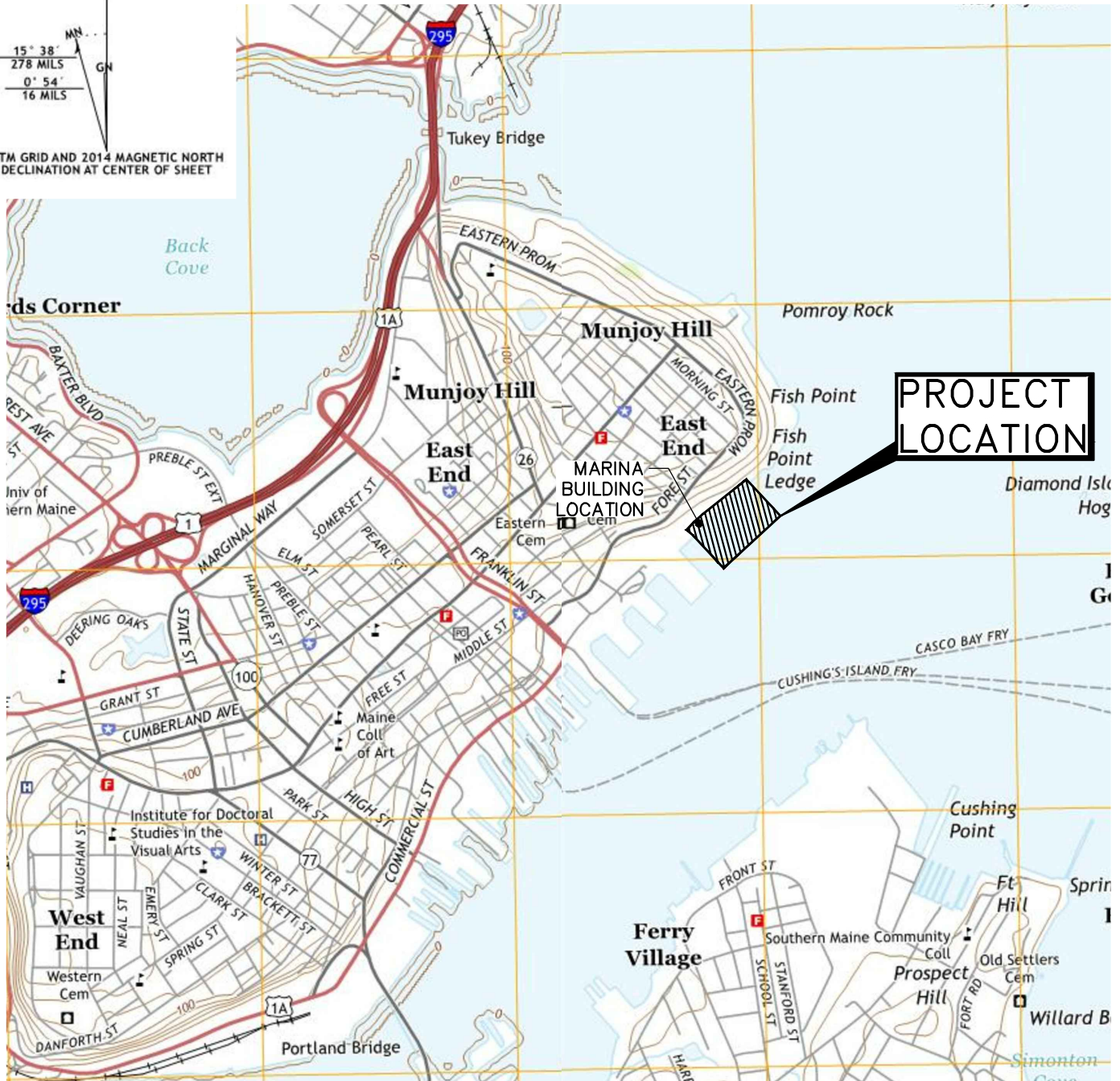
Federal Emergency Management Agency

ELEVATION REFERENCE MARKS

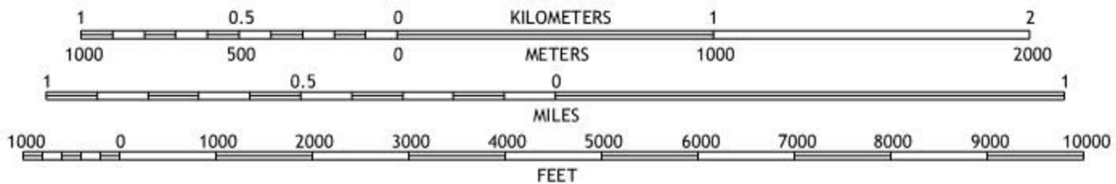
REFERENCE MARK	ELEVATION IN FT. (NGVD) ¹	DESCRIPTION OF LOCATION
RM 39	20.74	Disk set in highest point of large ledge outcrop on Fish Point, approximately 350 feet north from Fort Allen park off Eastern Promenade, approximately 140 feet west from Canadian National Railway tracks.
RM 40	14.46	Chiseled T in top of stone sill projecting 2 inches southeast from under south corner of building, 0.3 foot below level of sidewalk and approximately level with ground, at intersection of Commercial and India Streets at bottom south corner of 3-story Steamship Freight office building at northeast end of Commercial Street.
RM 41	14.04	5-inch drill hole in top of water table between two bases of stone columns on northeast side of entrance to Custom House located at intersection of Commercial and Pearl Streets, 11.5 feet northwest of the northwest curb of Commercial Street and 55.5 feet northeast of northeast curb of Pearl Street.

This is an official copy of a portion of the above referenced flood map. It was extracted using F-MIT On-Line. This map does not reflect changes or amendments which may have been made subsequent to the date on the title block. For the latest product information about National Flood Insurance Program flood maps check the FEMA Flood Map Store at www.msc.fema.gov

15° 38' MN
 278 MILS
 0° 54' GN
 16 MILS
 UTM GRID AND 2014 MAGNETIC NORTH DECLINATION AT CENTER OF SHEET



SCALE 1:24 000



Produced by the United States Geological Survey
 North American Datum of 1983 (NAD83)
 World Geodetic System of 1984 (WGS84). Projection and
 1 000-meter grid: Universal Transverse Mercator, Zone 19T
 10 000-foot ticks: Maine Coordinate System of 1983 (west zone)

PORTLAND WEST, ME PORTLAND EAST, ME

2014

2014



41 Hutchins Drive
 Portland, Maine 04102
 800.426.4262 | www.woodardcurran.com

COMMITMENT & INTEGRITY DRIVE RESULTS

USGS LOCATION MAP

DESIGNED BY: N/A
 DRAWN BY: BCM
 CHECKED BY: DAS
 227007.03 USGS MARINA.DWG

CPB2, LLC
 PORTLAND, MAINE 04102

MARINA SITE PLAN APPLICATION

JOB NO: 227007.50
 DATE: MARCH 2017
 SCALE: 1"=2000'

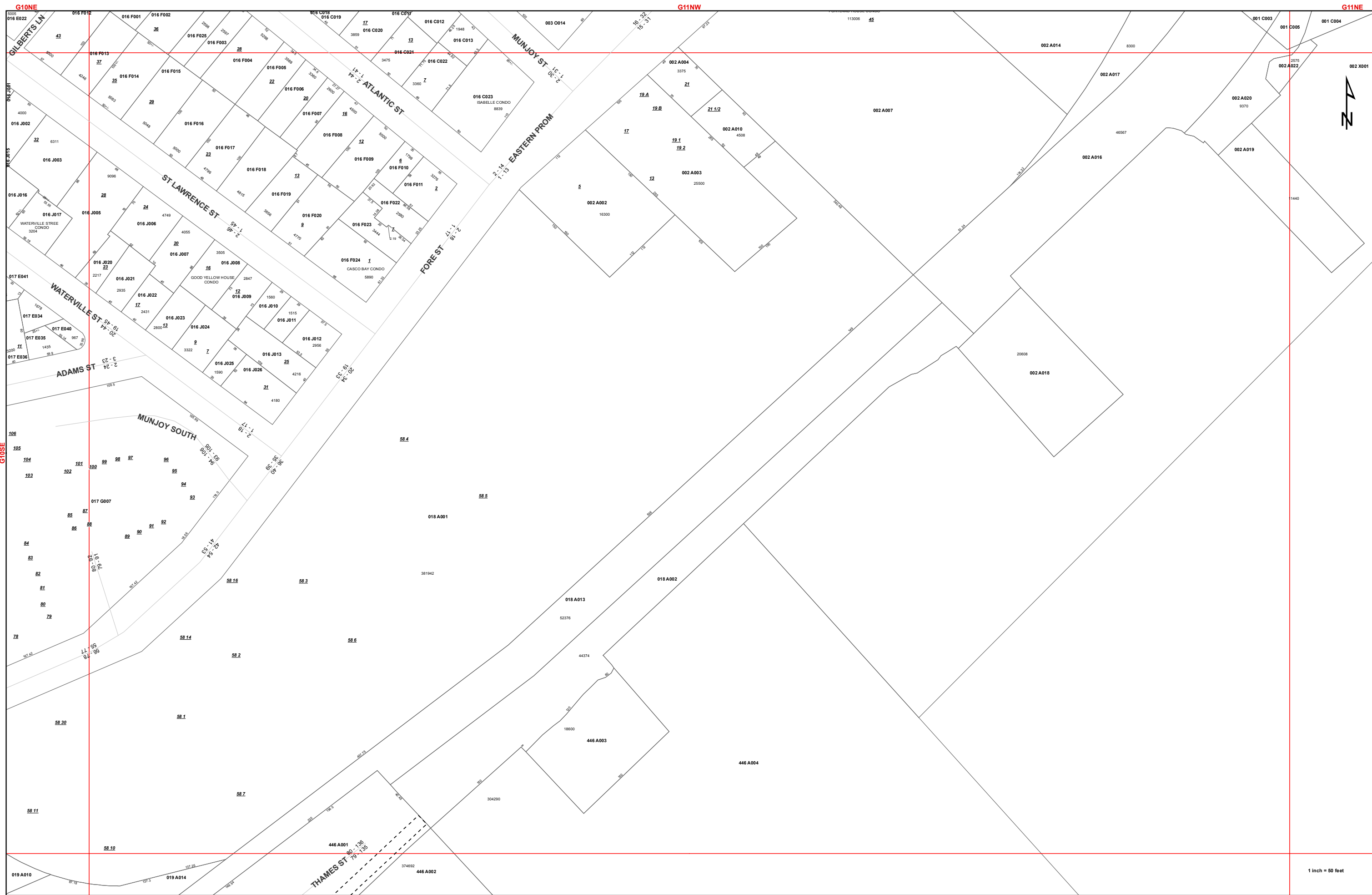
USGS



WATERVILLE ST
FORE ST

MUNJOY SOUTH
FORE ST

THAMES ST



G10NE

G11NW

G11NE

G10SE

G11SE

F10NE

F11NW

F11NE