

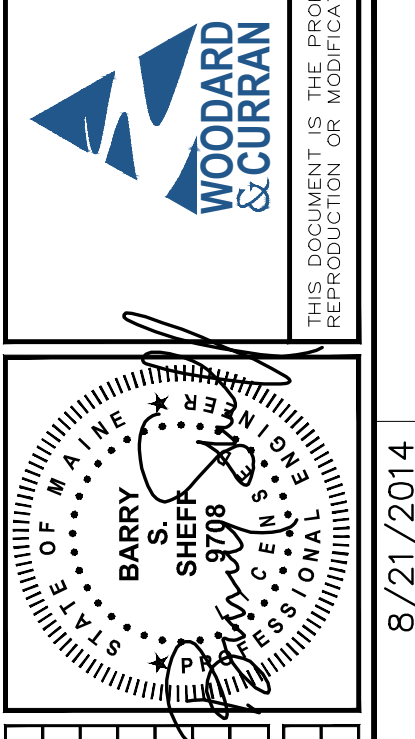
Legend:

- IRON PIPE OR ROD FOUND
- GAS VALVE
- WATER VALVE
- HYDRANT
- UTILITY POLE
- LIGHT POLE
- MANHOLE
- CATCH BASIN
- SIGN
- ELECTRIC OR GAS METER
- BOLLARD
- MONITORING WELL
- S.W. COLE BORING LOCATION (APPROXIMATE LOCATION)
- FENCE
- CURB
- OVERHEAD WIRES
- SS SANITARY SEWER
- W WATER LINE
- 20 1' CONTOUR
- N/F NOW OR FORMERLY
- O/H OVERHANG
- CONC. CONCRETE
- SCHEDULE B EXCEPTION

41 Hutchins Drive
Portland, Maine 04102
800.626.4282 | www.woodardcurran.com

WOODARD & CURRAN

COMMITMENT & INTEGRITY DRIVE RESULTS



REV	DESCRIPTION	DATE
DESIGNED BY: DAS		
CHECKED BY: DAS		
DRAWN BY: JBC		

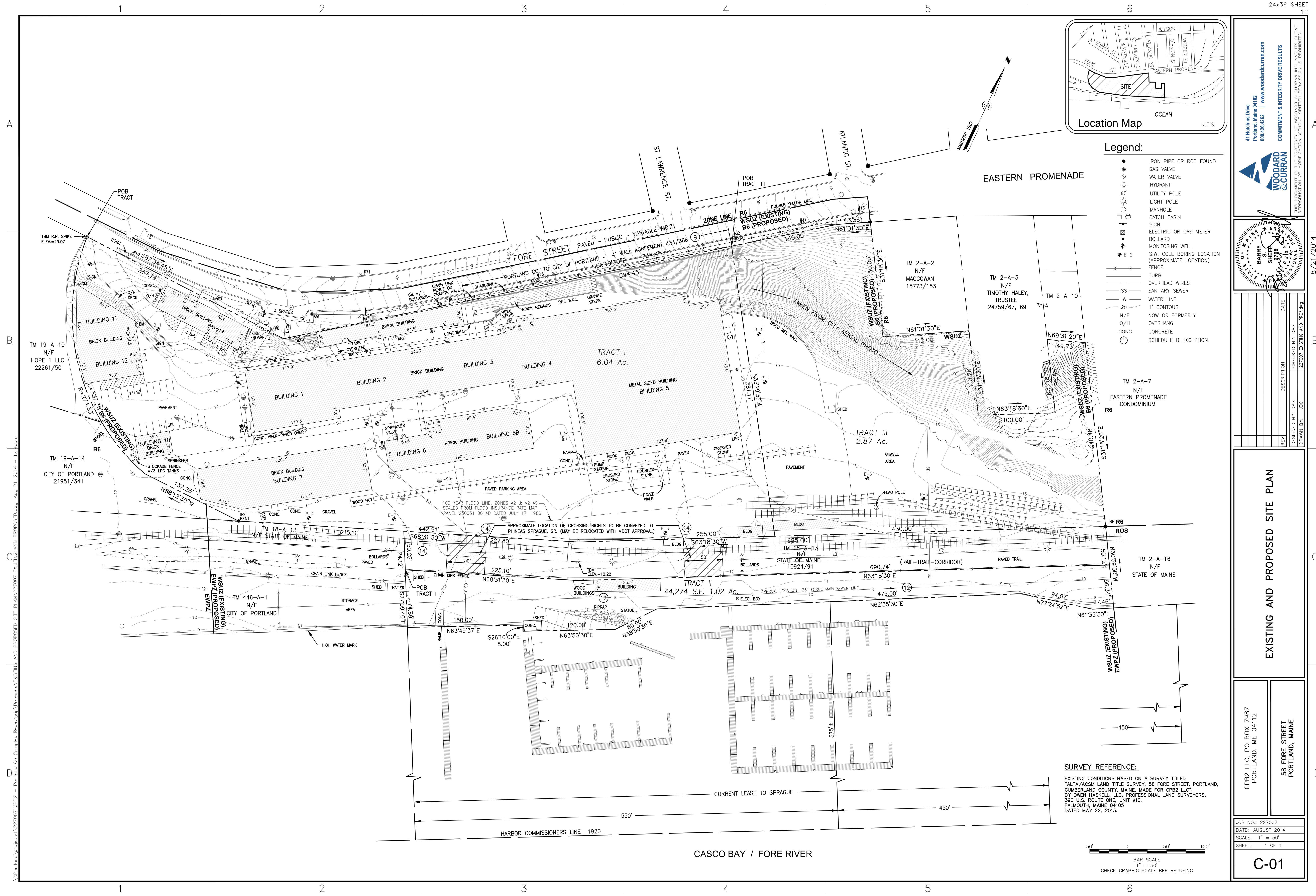
EXISTING AND PROPOSED SITE PLAN

CPB2 LLC, PO BOX 7987
PORTLAND, ME 04112

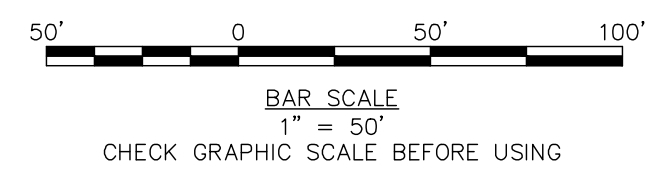
58 FORE STREET
PORTLAND, MAINE

JOB NO.: 227007
DATE: AUGUST 2014
SCALE: 1" = 50'
SHEET: 1 OF 1

C-01



SURVEY REFERENCE:
EXISTING CONDITIONS BASED ON A SURVEY TITLED "ALTA/ACSM LAND TITLE SURVEY, 58 FORE STREET, PORTLAND, CUMBERLAND COUNTY, MAINE, MADE FOR CPB2 LLC", BY OWEN HASKELL, LLC, PROFESSIONAL LAND SURVEYORS, 390 U.S. ROUTE ONE, UNIT #10, FALMOUTH, MAINE 04105, DATED MAY 22, 2013.



D:\Portland\projects\227007_CPB2 - Portland Co Complex Redev\wp\Drawings\EXISTING AND PROPOSED SITE PLAN\227007_CPB2.dwg, Aug 21, 2014, 12:16pm