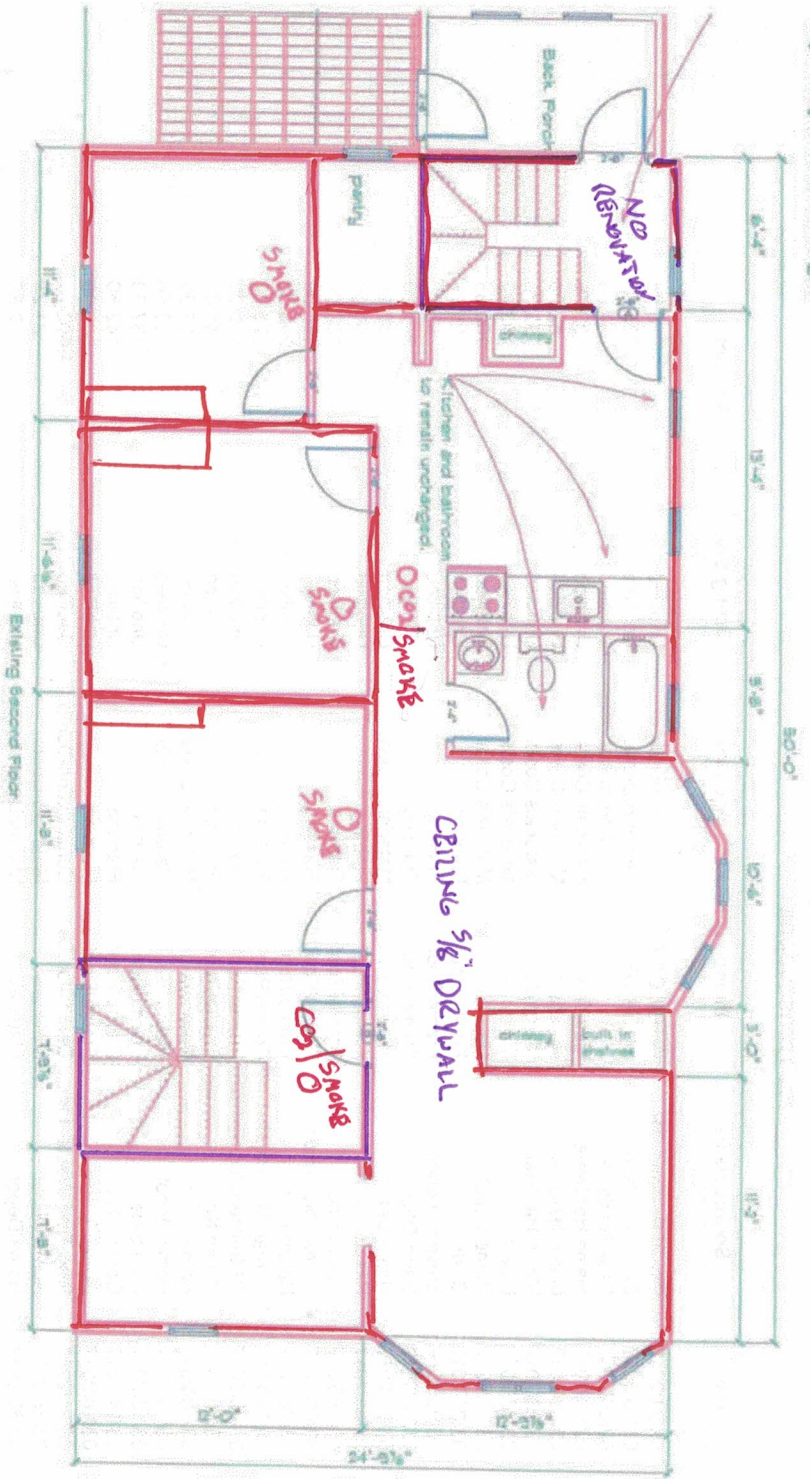


PROPOSED SECOND FLOOR



All High/Low walls in living space and in front common to have plaster removed, string updated, exterior wall new to greatest capacity of existing framing. Updated walls will ultra new drywall.
 All ceilings in living space and in front common hallway to removed and replaced with new drywall.
 All windows and doors are to remain in place and unchanged.

AB.001.Door Schedule

OPENING ID	TYPE	SIZE	HINGE DIRECTION	JAMB SIZE	COOR
A	Fire	28x8	LH	4 5/8 adjust	Ø
B	Fire	28x8	RH	4 5/8 adjust	Ø

5/8" PANELS
 1/2" PANELS

