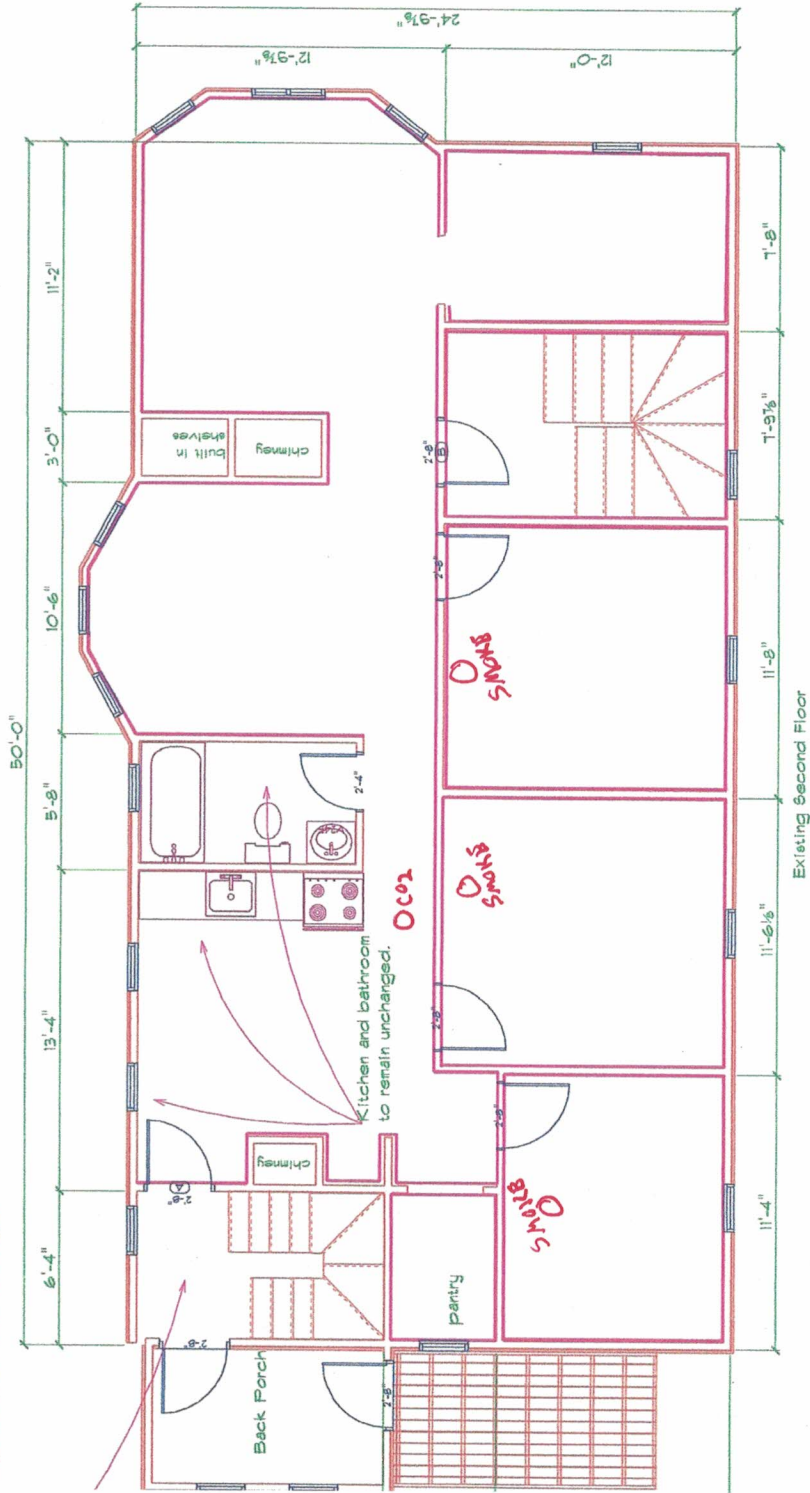


Stairway to remain unchanged.



All highlighted walls in living space and in front common to have plaster removed, wiring updated, exterior wall new to greatest capacity of existing framing. Updated walls will with new drywall.
 All ceilings in living space and in front common hallway to removed and replaced with new drywall.
 All windows and doors are to remain in place and unchanged.

A8.001.Door Schedule

OPENING ID	TYPE	SIZE	HINGE DIRECTION	JAMB SIZE	COLIN
A	Fire	2868	LH	4 9/16 adjust	●
B	Fire	2868	RH	4 9/16 adjust	●