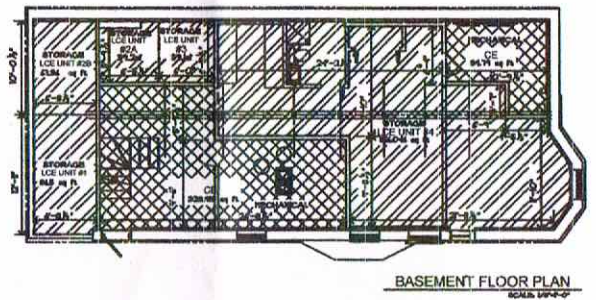
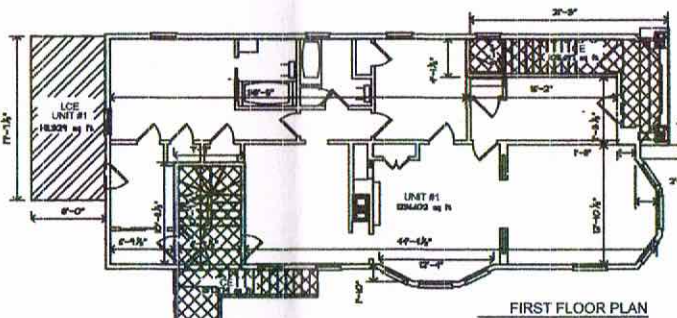
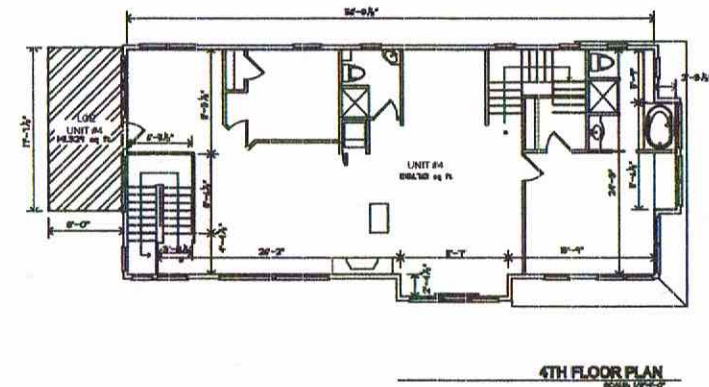
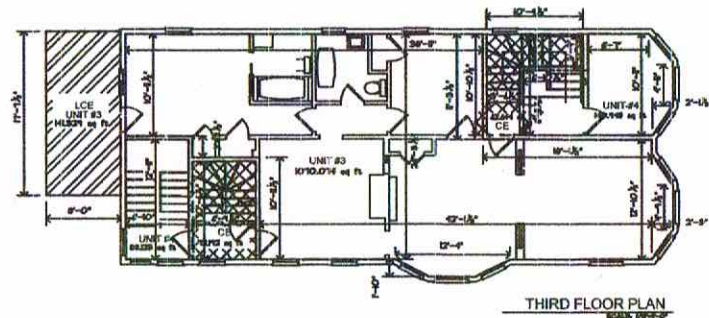


What is the purpose of this door?

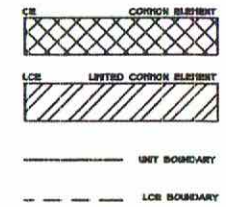
Does NOT exist ANY MORE



NOTES

1. I, THOMAS H. THOMAS, D/B/A G7A3 ARCHITECTS, CERTIFIES THAT TO THE BEST OF MY KNOWLEDGE, THE INFORMATION CONTAINED HEREIN IS ACCURATE AND COMPLETE TO THE BEST OF MY KNOWLEDGE AND BELIEF. I AM NOT PROVIDING ANY WARRANTY OR GUARANTEE FOR THE INFORMATION CONTAINED HEREIN. I AM NOT PROVIDING ANY WARRANTY OR GUARANTEE FOR THE INFORMATION CONTAINED HEREIN.

LEGEND



Please specify the buildings:  
- Construction type  
- Occupancy classification  
- If Sprinkled or Unsprinkled

UNIT #1

FIRST FLOOR	884
SECOND FLOOR	884
THIRD FLOOR	884
FOURTH FLOOR	884
TOTAL SF	3520

UNIT #2B

FIRST FLOOR	831
SECOND FLOOR	831
THIRD FLOOR	831
FOURTH FLOOR	831
TOTAL SF	3324

UNIT #2A

FIRST FLOOR	818
SECOND FLOOR	818
THIRD FLOOR	818
FOURTH FLOOR	818
TOTAL SF	3272

UNIT #3

FIRST FLOOR	870
SECOND FLOOR	870
THIRD FLOOR	870
FOURTH FLOOR	870
TOTAL SF	3480

UNIT #4

FIRST FLOOR	821
SECOND FLOOR	821
THIRD FLOOR	821
FOURTH FLOOR	821
TOTAL SF	3284

- WOOD CONSTRUCTION  
- CONDO  
- UNSPRINKLED

AMENDED BASEMENT FLOOR PLAN  
COIS FHARRAIGE CONDOMINIUM

36-38 WATERVILLE STREET  
PORTLAND, MAINE

DRAWN BY: THOMAS H. THOMAS, D/B/A G7A3 ARCHITECTS  
DATE: 10-21-2008  
AMENDED: 1-28-2009  
AMENDED: 3-14-2011  
AMENDED: 3-14-2011  
PREPARED FOR: MICHAEL C. CORWYLL AND REBECCA S. HITCHCOCK, 36 WATERVILLE STREET, PORTLAND, MAINE 04101