

N 302788.032'
E 2930860.357'

1' off property line

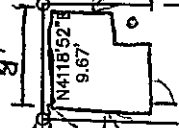
~~109' 5"~~
109' 5" off line
N/F
JOHN C. & CHERYL L.J. FUSCO
10684/209

25

GAS METER
ELECTRIC METER

171.95' FROM SERMAN STREET

N 302689.634'
E 2930949.550'



24

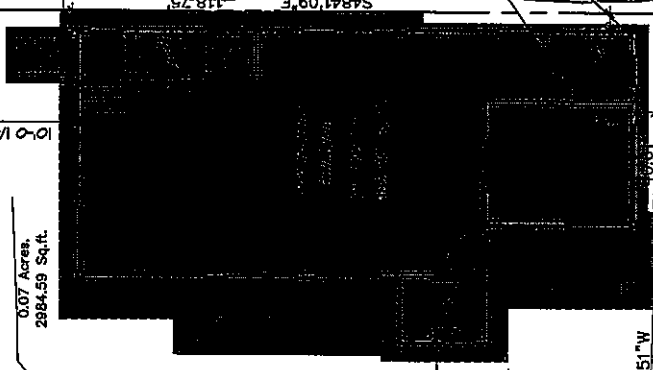
4' off line
6' off line
30.35'
N 302760.767'
E 2930853.972'

4' off line
6' off line

N4705'49\" W
59.50'

N 302720.282'
E 2930897.556'

29.00'
N4244'58\" E



0.07 Acres,
2984.59 Sq.ft.

N4824'09\" W
60.00'

PAVED DRIVE

N 302659.133'
E 2930922.741'

54.41'

CONCRETE SIDEWALK

N/F
BENJAMIN F. DUDLEY III
& LYNN F. DAVEY
16009/134

GOULD LINE

N 302698.967'
E 2930877.871'

N/F
KEVIN R. & SUSAN WILSON
20764/317

PAVED DRIVE

1.17'

1.00'