

WINDOW SCHEDULE

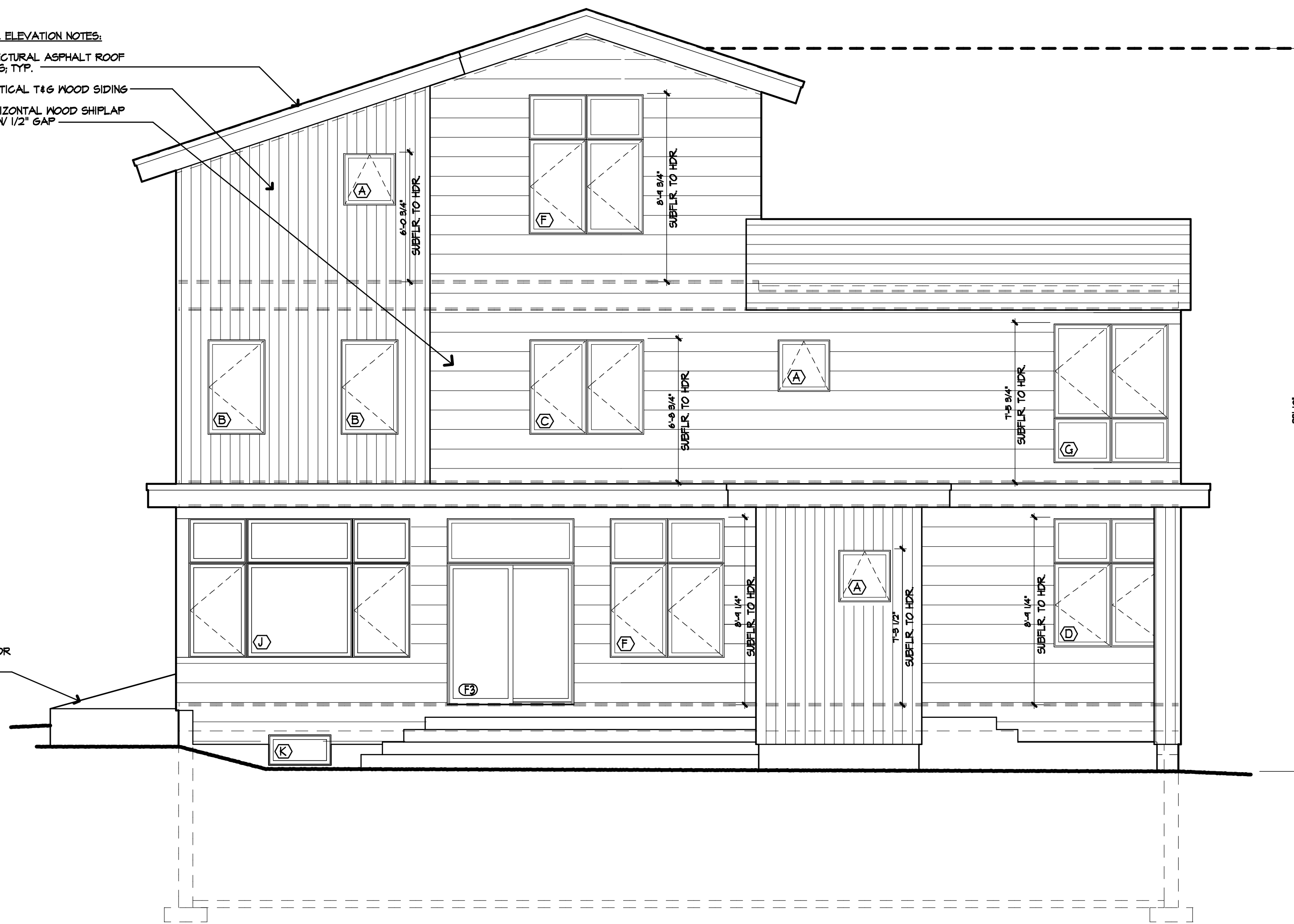
MARK	TYPE	UNIT	GLAZING	ROUGH OPENING (M X H)	REMARKS
A	AWN	2424	DUAL	2'-6 3/4" X 2'-6 1/4"	1 LITE AWNING
B	CMT	5255	DUAL	2'-6 3/4" X 4'-6 1/4"	1 LITE CASEMENT, EGRESS
C	CMT	(2)5255	DUAL	5'-4 3/4" X 4'-6 1/4"	(2) 1 LITE CASEMENTS, MULLED, EGRESS
D	FIXED CMT	(2)5225/(2)5247	DUAL	5'-4 3/4" X 6'-1 1/4"	(2) 1 LITE FIXED SASH SETS MULLED TO TOP OF (2) 1 LITE CASEMENTS, MULLED, EGRESS
E	FIXED CMT	(3)5225/(3)5247	DUAL	8'-1 3/4" X 6'-1 1/4"	(3) 1 LITE FIXED SASH SETS MULLED TO TOP OF (3) 1 LITE CASEMENTS, MULLED, EGRESS
F	FIXED CMT	(2)5225/(2)5255	DUAL	5'-4 3/4" X 6'-7 1/4"	(2) 1 LITE FIXED SASH SETS MULLED TO TOP OF (2) 1 LITE CASEMENTS, MULLED, EGRESS
G	FIXED CMT	(2)5255/(2)5225	DUAL	5'-4 3/4" X 6'-7 1/4"	(2) 1 LITE CASEMENTS MULLED TO TOP OF (2) 1 LITE FIXED SASH SETS, MULLED, EGRESS
H	FIXED CMT	(3)5255/(3)5225	DUAL	8'-1 3/4" X 6'-7 1/4"	(3) 1 LITE CASEMENTS MULLED TO TOP OF (3) 1 LITE FIXED SASH SETS, MULLED, EGRESS
I	FIXED CMT	CUSTOM/CUSTOM	DUAL	4'-9" X 6'-7 1/4"	1 LITE CUSTOM PICTURE MULLED TO TOP OF 1 LITE FIXED SASH SET
J	FIXED CMT	5225/5425/5225 5255/5455/5255	DUAL	10'-5" X 6'-7 1/4"	1 LITE FIXED SASH SET / 1 LITE FIXED SASH SET / 1 LITE FIXED SASH SET MULLED TO TOP OF 1 LITE CASEMENT / 1 LITE PICTURE / 1 LITE CASEMENT
K	AWN	5511	DUAL	2'-11 3/4" X 1'-6 1/4"	1 LITE AWNING
L					
M					
N					
O					

WINDOW SCHEDULE NOTES:

- TYPICAL FLASHING DETAILS SHEET A4.1 & A4.2 DETAILS
- CONTRACTOR SHALL MEASURE AND VERIFY ALL ROUGH OPENINGS WITH WINDOW MANUFACTURER'S PRINTED INFORMATION
- ALL WINDOW ROUGH OPENING DIMENSIONS ARE BASED ON PELLA PROLINE SERIES WINDOWS GLAZING COLOR TO BE T3.D.
- PELLA WINDOW GLASS SHALL BE DUAL - LOE I&O WITH ARGON
- SUBMIT COMPLETE WINDOW SHOP DRAWINGS TO ARCHITECT FOR REVIEW PRIOR TO ORDERING WINDOWS.
- EACH PANE OF GLAZING INSTALLED IN A "HAZARDOUS LOCATION" AS DEFINED BY THE IBC CODE, SHALL BE SAFETY GLAZING AS REQUIRED, AND SHALL BE SO LABELLED.
- ROUGH OPENING HEIGHTS LISTED ABOVE ARE PELLA PROLINE SERIES WINDOWS UNO. ROUGH OPENING HEIGHT PLUS 1/2" TO ALLOW FOR A CLIPBOARD UNDER WINDOW UNIT FOR DRAINAGE (EXCEPT TRANSOM UNITS)

TYPICAL ELEVATION NOTES:

- ARCHITECTURAL ASPHALT ROOF SHINGLES, TYP.
- 1X4 VERTICAL T&G WOOD SIDING
- 1X6 HORIZONTAL WOOD SHIPLAP SIDING W/ 1/2" GAP



1 SOUTH ELEVATION
A2.1 1/4" = 1'-0"

DOOR SCHEDULE

MARK	TYPE	UNIT	DOOR SLAB U.N.O. (M X H)	TOP OF R.O.	REMARKS
F1	ENTRY	THERMA-TRU "MLSE"	5'-0" X 6'-8"	-	ENTRY IV PELLA PROLINE 56"X25" TRANSOM, 2X BETWEEN DOOR & TRANSOM
F2	PRELEED				
F3	SLIDING	1225/1250 FIXED, VENT LEFT	6'-0" X 8'-4"	-	PELLA PROLINE SLIDING DOOR IV FIXED SASH MULLED TO TOP
F4	SLIDING	1416 FIXED/VENT/FIXED	11'-4 1/8" X 8'-0"	-	PELLA ARCHITECT SERIES, QUAD SLIDING FRENCH DOOR

CONTRACTOR SHALL MEASURE AND VERIFY ALL DIMENSIONS AT THE WORK. THIS DRAWING IS A PART OF A FULL SET OF DRAWINGS COMPRISING THE CONTRACT DOCUMENTS FOR THE WORK OF THIS PROJECT. THE ARCHITECT/OWNER ACCEPTS NO RESPONSIBILITY FOR THE CONTRACTOR'S ERRORS OR OMISSIONS IF EACH TRADE DOES NOT HAVE THE FULL SET OF DRAWINGS AND SPECIFICATIONS.

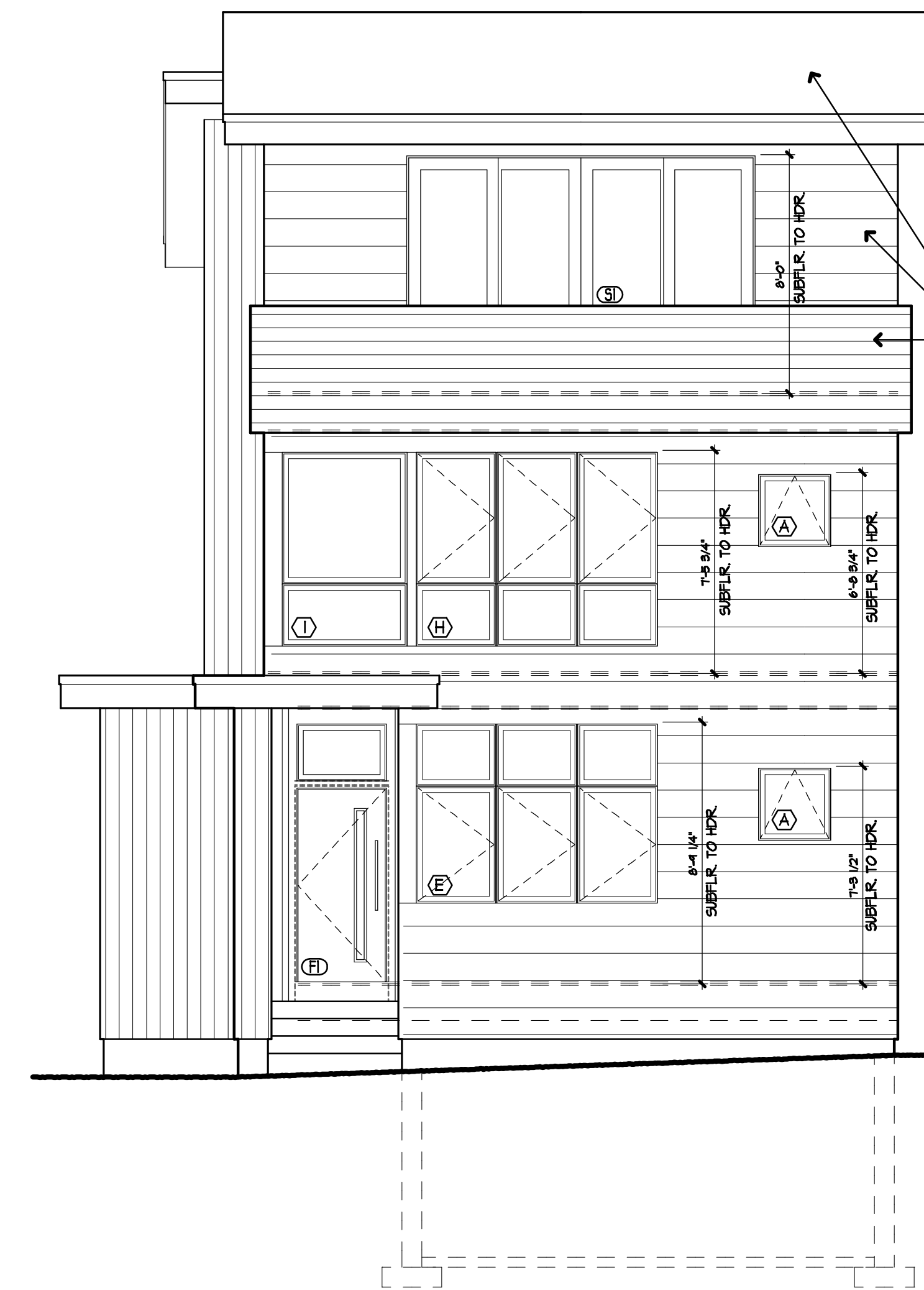
COPYRIGHT 2015 ©
THE MATERIAL CONTAINED IN THESE DRAWINGS AND THE DESIGN THEY ARE INTENDED TO CONVEY ARE THE EXCLUSIVE PROPERTY OF KEVIN BROWNE ARCHITECTURE LLC. POSSESSION AND USE HEREOF IS GRANTED ONLY CONFIDENTIALLY IN CONNECTION WITH CONSTRUCTION OF THE BUILDING DEPICTED HEREIN AS AUTHORIZED BY KEVIN BROWNE ARCHITECTURE LLC. THE RECIPIENT AGREES TO ABIDE BY THESE RESTRICTIONS. ANY USE, REPRODUCTION OR DISCLOSURE OF ANY INFORMATION IN WHOLE OR IN PART, CONTAINED HEREIN, WITHOUT WRITTEN PERMISSION OF KEVIN BROWNE ARCHITECTURE LLC, IS EXPRESSLY PROHIBITED.

KEVIN BROWNE ARCHITECTURE
207 . 847 . 3499
Kevin@kevinbrownearchitecture.com
7 breezy hill lane
falmouth, me 04105

REVISIONS:
5-4-15: ISSUE FOR PERMIT
7-28-15: RESUBMIT FOR PERMIT
8-6-15: RESUBMIT FOR PERMIT

CONSULTANTS:

- ARCHITECTURAL ASPHALT ROOF SHINGLES, TYP.
- 1X6 HORIZONTAL WOOD SHIPLAP SIDING W/ 1/2" GAP
- 1X4 HORIZONTAL T&G WOOD SIDING



2 WEST ELEVATION
A2.1 1/4" = 1'-0"

JUDKINS RESIDENCE

CLIENT: TYLER & KATIE JUDKINS

ADDRESS: WILMONT ST. PORTLAND, ME

ELEVATIONS

DATE: 8/3/2015 DRAWN: KWB SCALE: 1/4" = 1'-0"
PROJECT NO.: 2015-03

A2.1