

# WINDOW SCHEDULE

MARK	TYPE	UNIT	GLAZING	ROUGH OPENING (N X H)	REMARKS
A	AWN	2424	DUAL	2'-5 3/4" X 2'-6 1/4"	1 LITE AWNING
B	GHT	9259	DUAL	2'-8 3/4" X 4'-6 1/4"	1 LITE CASEMENT, EGRESS
C	GHT	(2)9259	DUAL	5'-4 3/4" X 4'-6 1/4"	(2) 1 LITE CASEMENTS, MALLED, EGRESS
D	FIXED GHT	(2)9225/(2)9247	DUAL	5'-4 3/4" X 6'-1 1/4"	(2) 1 LITE FIXED SASH SETS MALLED TO TOP OF (2) 1 LITE CASEMENTS, MALLED, EGRESS
E	FIXED GHT	(3)9225/(3)9247	DUAL	8'-1 3/4" X 6'-1 1/4"	(3) 1 LITE FIXED SASH SETS MALLED TO TOP OF (3) 1 LITE CASEMENTS, MALLED, EGRESS
F	FIXED GHT	(2)9225/(2)9259	DUAL	5'-4 3/4" X 6'-7 1/4"	(2) 1 LITE FIXED SASH SETS MALLED TO TOP OF (2) 1 LITE CASEMENTS, MALLED, EGRESS
G	GHT	(2)9259/(2)9225	DUAL	5'-4 3/4" X 6'-1 1/4"	(2) 1 LITE CASEMENTS MALLED TO TOP OF (2) 1 LITE FIXED SASH SETS, MALLED, EGRESS
H	FIXED GHT	(3)9259/(3)9225	DUAL	8'-1 3/4" X 6'-7 1/4"	(3) 1 LITE CASEMENTS MALLED TO TOP OF (3) 1 LITE FIXED SASH SETS, MALLED, EGRESS
I	FIXED PICT	CUSTOM/CUSTOM	DUAL	4'-8" X 6'-7 1/4"	1 LITE CUSTOM PICTURE MALLED TO TOP OF 1 LITE FIXED SASH SET
J	FIXED GHT	9225/9425/9225 9259/9459/9259	DUAL	10'-9" X 6'-7 1/4"	1 LITE FIXED SASH SET / 1 LITE FIXED SASH SET / 1 LITE FIXED SASH SET MALLED TO TOP OF 1 LITE CASEMENT / 1 LITE PICTURE / 1 LITE CASEMENT
K	AWN	9917	DUAL	2'-4 3/4" X 1'-6 1/4"	1 LITE AWNING
L					
M					
N					
O					

### WINDOW SCHEDULE NOTES:

- TYPICAL FLASHING DETAILS SHEET A4.1 & A4.2 DETAILS
- CONTRACTOR SHALL MEASURE AND VERIFY ALL ROUGH OPENINGS WITH WINDOW MANUFACTURERS PRINTED INFORMATION
- ALL WINDOW ROUGH OPENING DIMENSIONS ARE BASED ON PELLA PROLINE SERIES WINDOWS GLAZING COLOR TO BE 1515
- PELLA WINDOW GLASS SHALL BE DUAL - LOE 180 WITH ARSON
- SUBMIT COMPLETE WINDOW SHOP DRAWINGS TO ARCHITECT FOR REVIEW PRIOR TO ORDERING WINDOWS
- EACH PANE OF GLAZING INSTALLED IN A "HAZARDOUS LOCATION" AS DEFINED BY THE IRC 2009, SHALL BE SAFETY GLAZING AS REQUIRED, AND SHALL BE SO LABELLED.
- ROUGH OPENING HEIGHTS LISTED ABOVE ARE PELLA PROLINE SERIES WINDOWS UNO. ROUGH OPENING HEIGHT PLUS 1/2" TO ALLOW FOR A CLIPBOARD UNDER WINDOW UNIT FOR DRAINAGE (EXCEPT TRANSOM UNITS)

# DOOR SCHEDULE

MARK	TYPE	UNIT	DOOR SLAB UNO. (N X H)	TOP OF R.O.	REMARKS
F1	ENTRY	THERMA-TRU "PULSE"	9'-0" X 6'-6"	-	ENTRY W/ PROLINE 56"x29" TRANSOM, 2X BETWEEN DOOR & TRANSOM
F2	BELEVED				
F3	SLIDING	T225/T260 FIXED, VENT LEFT	6'-0" X 8'-4"	-	PELLA PROLINE SLIDING DOOR W/ FIXED SASH MALLED TO TOP
S1	SLIDING	1416 FIXED/VENT/FIXED	11'-4 1/8" X 8'-0"	-	PELLA ARCHITECT SERIES, QUAD SLIDING FRENCH DOOR

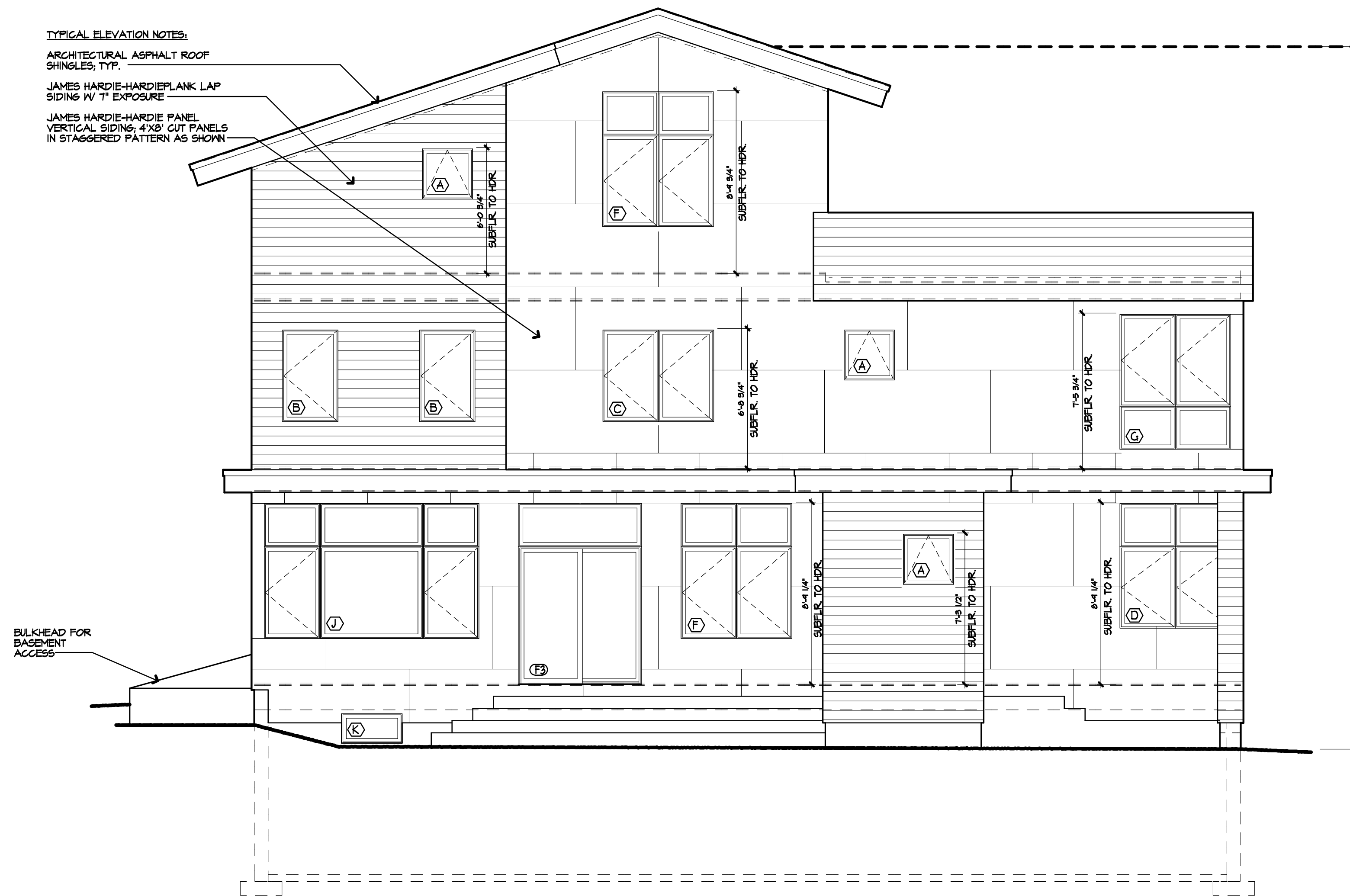
CONTRACTOR SHALL MEASURE AND VERIFY ALL DIMENSIONS AT THE WORK. THIS DRAWING IS A PART OF A FULL SET OF DRAWINGS COMPRISING THE CONTRACT DOCUMENTS FOR THE WORK. OF THIS PROJECT. THE ARCHITECT/OWNER ACCEPTS NO RESPONSIBILITY FOR THE CONTRACTOR'S ERRORS OR OMISSIONS IF EACH TRADE DOES NOT HAVE THE FULL SET OF DRAWINGS AND SPECIFICATIONS.

COPYRIGHT 2015 ©  
THE MATERIAL CONTAINED IN THESE DRAWINGS AND THE DESIGN THEY ARE INTENDED TO CONVEY ARE THE EXCLUSIVE PROPERTY OF KEVIN BROWNE ARCHITECTURE LLC. POSSESSION AND USE HEREOF IS GRANTED ONLY CONFIDENTIALLY IN CONNECTION WITH CONSTRUCTION OF THE BUILDING SPECIFIED HEREIN AS AUTHORIZED BY KEVIN BROWNE ARCHITECTURE LLC. THE RECIPIENT AGREES TO ABIDE BY THESE RESTRICTIONS. ANY USE, REPRODUCTION OR DISCLOSURE OF ANY INFORMATION, IN WHOLE OR IN PART, CONTAINED HEREIN, WITHOUT WRITTEN PERMISSION OF KEVIN BROWNE ARCHITECTURE LLC IS EXPRESSLY PROHIBITED.

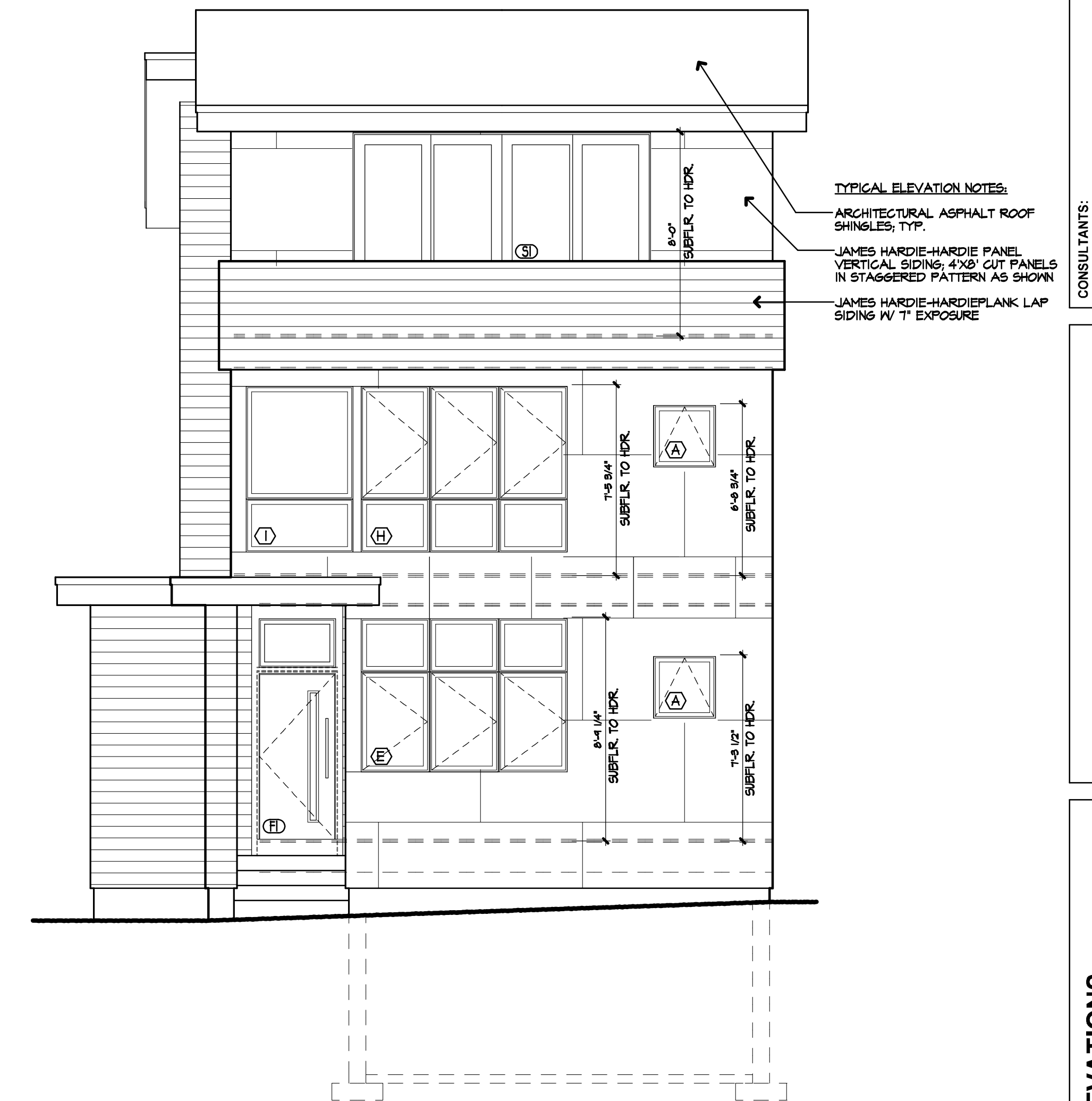
**Kevin Browne Architecture**  
207.847.3499  
kevin@kevinbrownearchitecture.com  
7 Breccy Hill Lane  
Fairmount, ME 04105

### TYPICAL ELEVATION NOTES:

- ARCHITECTURAL ASPHALT ROOF SHINGLES, TYP.
- JAMES HARDIE-HARDIE/PLANK LAP SIDING W/ T EXPOSURE
- JAMES HARDIE-HARDIE PANEL VERTICAL SIDING, 4'X8' CUT PANELS IN STAGGERED PATTERN AS SHOWN



1 SOUTH ELEVATION  
A2.1 1/4" = 1'-0"



2 WEST ELEVATION  
A2.1 1/4" = 1'-0"

REVISIONS:  
5-4-15: ISSUE FOR PERMIT  
7-26-15: RESUBMIT FOR PERMIT  
7-28-15: RESUBMIT FOR PERMIT

CONSULTANTS:

**JUDKINS RESIDENCE**  
CLIENT: TYLER & KATIE JUDKINS

ADDRESS: 107 MONUMENT ST.  
PORTLAND, ME

ELEVATIONS

DATE: 7/28/2015  
PROJECT NO.: 2015-03

DRAWN: KWB  
SCALE: 1/4" = 1'-0"

A2.1