

# WINDOW SCHEDULE

MARK	TYPE	UNIT	GLAZING	ROUGH OPENING (N X H)	REMARKS
A	AWN	2424	DUAL	2'-5 3/4" X 2'-6 1/4"	1 LITE AWNING
B	GMT	9259	DUAL	2'-6 3/4" X 4'-6 1/4"	1 LITE CASEMENT, EGRESS
C	GMT	(2)9259	DUAL	3'-4 3/4" X 4'-6 1/4"	(2) 1 LITE CASEMENTS, MULLED, EGRESS
D	FIXED/GMT	(2)9225/(2)9241	DUAL	3'-4 3/4" X 6'-1 1/4"	(2) 1 LITE FIXED SASH SETS MULLED TO TOP OF (2) 1 LITE CASEMENTS, MULLED, EGRESS
E	FIXED/GMT	(3)9225/(3)9241	DUAL	6'-1 3/4" X 6'-1 1/4"	(3) 1 LITE FIXED SASH SETS MULLED TO TOP OF (3) 1 LITE CASEMENTS, MULLED, EGRESS
F	FIXED/GMT	(2)9225/(2)9259	DUAL	3'-4 3/4" X 6'-1 1/4"	(2) 1 LITE FIXED SASH SETS MULLED TO TOP OF (2) 1 LITE CASEMENTS, MULLED, EGRESS
G	FIXED/GMT	(2)9225/(2)9225	DUAL	3'-4 3/4" X 6'-1 1/4"	(2) 1 LITE CASEMENTS MULLED TO TOP OF (2) 1 LITE FIXED SASH SETS, MULLED, EGRESS
H	FIXED/GMT	(3)9225/(3)9225	DUAL	6'-1 3/4" X 6'-1 1/4"	(3) 1 LITE CASEMENTS MULLED TO TOP OF (3) 1 LITE FIXED SASH SETS, MULLED, EGRESS
I	FIXED/GMT	CUSTOM/CUSTOM	DUAL	4'-3" X 6'-1 1/4"	1 LITE CUSTOM PICTURE MULLED TO TOP OF 1 LITE FIXED SASH SET
J	FIXED/GMT	9225/9425/9225 9225/9425/9225	DUAL	10'-5" X 6'-1 1/4"	1 LITE FIXED SASH SET / 1 LITE FIXED SASH SET / 1 LITE FIXED SASH SET MULLED TO TOP OF 1 LITE CASEMENT / 1 LITE PICTURE / 1 LITE CASEMENT
K	AWN	9511	DUAL	2'-11 3/4" X 1'-6 1/4"	1 LITE AWNING
L					
M					
N					
O					

### WINDOW SCHEDULE NOTES:

- TYPICAL FLASHING DETAILS SHEET A4.1 & A4.2 DETAILS
- CONTRACTOR SHALL MEASURE AND VERIFY ALL ROUGH OPENINGS WITH WINDOW MANUFACTURERS' PRINTED INFORMATION
- ALL WINDOW ROUGH OPENING DIMENSIONS ARE BASED ON PELLA PROLINE SERIES WINDOWS GLAZING COLOR TO BE 1315
- PELLA WINDOW GLASS SHALL BE DUAL - LOE 180 WITH ARSON
- SUBMIT COMPLETE WINDOW SHOP DRAWINGS TO ARCHITECT FOR REVIEW PRIOR TO ORDERING WINDOWS.
- EACH PANE OF GLAZING INSTALLED IN A HAZARDOUS LOCATION AS DEFINED BY THE IRC 2004, SHALL BE SAFETY GLAZING AS REQUIRED, AND SHALL BE SO LABELLED.
- ROUGH OPENING HEIGHTS LISTED ABOVE ARE PELLA PROLINE SERIES WINDOWS UNITS. ROUGH OPENING HEIGHT PLUS 1/2" TO ALLOW FOR A CLAMPBOARD UNDER WINDOW UNIT FOR DRAINAGE (EXCEPT TRANSOM UNITS)

# DOOR SCHEDULE

MARK	TYPE	UNIT	DOOR SLAB UNO. (N X H)	TOP OF R.O.	REMARKS
F1	ENTRY	THERMA-TRU 'PULSE'	3'-0" X 6'-0"	-	ENTRY W/ PROLINE 36"x23" TRANSOM, 2X BETWEEN DOOR & TRANSOM
F2	DELETED				
F3	SLIDING	1225/1260 FIXED, VENT LEFT	6'-0" X 8'-4"	-	PELLA PROLINE SLIDING DOOR W/ FIXED SASH MULLED TO TOP
S1	SLIDING	1416 FIXED/VENT/FIXED	11'-4 1/8" X 8'-0"	-	PELLA ARCHITECT SERIES, QUAD SLIDING FRENCH DOOR

CONTRACTOR SHALL MEASURE AND VERIFY ALL DIMENSIONS AT THE WORK. THIS DRAWING IS A PART OF A FULL SET OF DRAWINGS COMPRISING THE CONTRACT DOCUMENTS FOR THE WORK OF THIS PROJECT. THE ARCHITECT/OWNER ACCEPTS NO RESPONSIBILITY FOR THE CONTRACTOR'S ERRORS OR OMISSIONS IF EACH TRADE DOES NOT HAVE THE FULL SET OF DRAWINGS AND SPECIFICATIONS.

COPYRIGHT 2015 ©  
THE MATERIAL CONTAINED IN THESE DRAWINGS AND THE DESIGN THEY ARE INTENDED TO CONVEY ARE THE EXCLUSIVE PROPERTY OF KEVIN BROWNE ARCHITECTURE LLC. POSSESSION AND USE HEREOF IS GRANTED ONLY CONFIDENTIALLY IN CONNECTION WITH CONSTRUCTION OF THE BUILDING DEPICTED HEREIN AS AUTHORIZED BY KEVIN BROWNE ARCHITECTURE LLC. THE RECIPIENT AGREES TO ABIDE BY THESE RESTRICTIONS. ANY REPRODUCTION OR DISCLOSURE OF ANY INFORMATION, IN WHOLE OR IN PART, CONTAINED HEREIN, WITHOUT WRITTEN PERMISSION OF KEVIN BROWNE ARCHITECTURE LLC IS EXPRESSLY PROHIBITED.

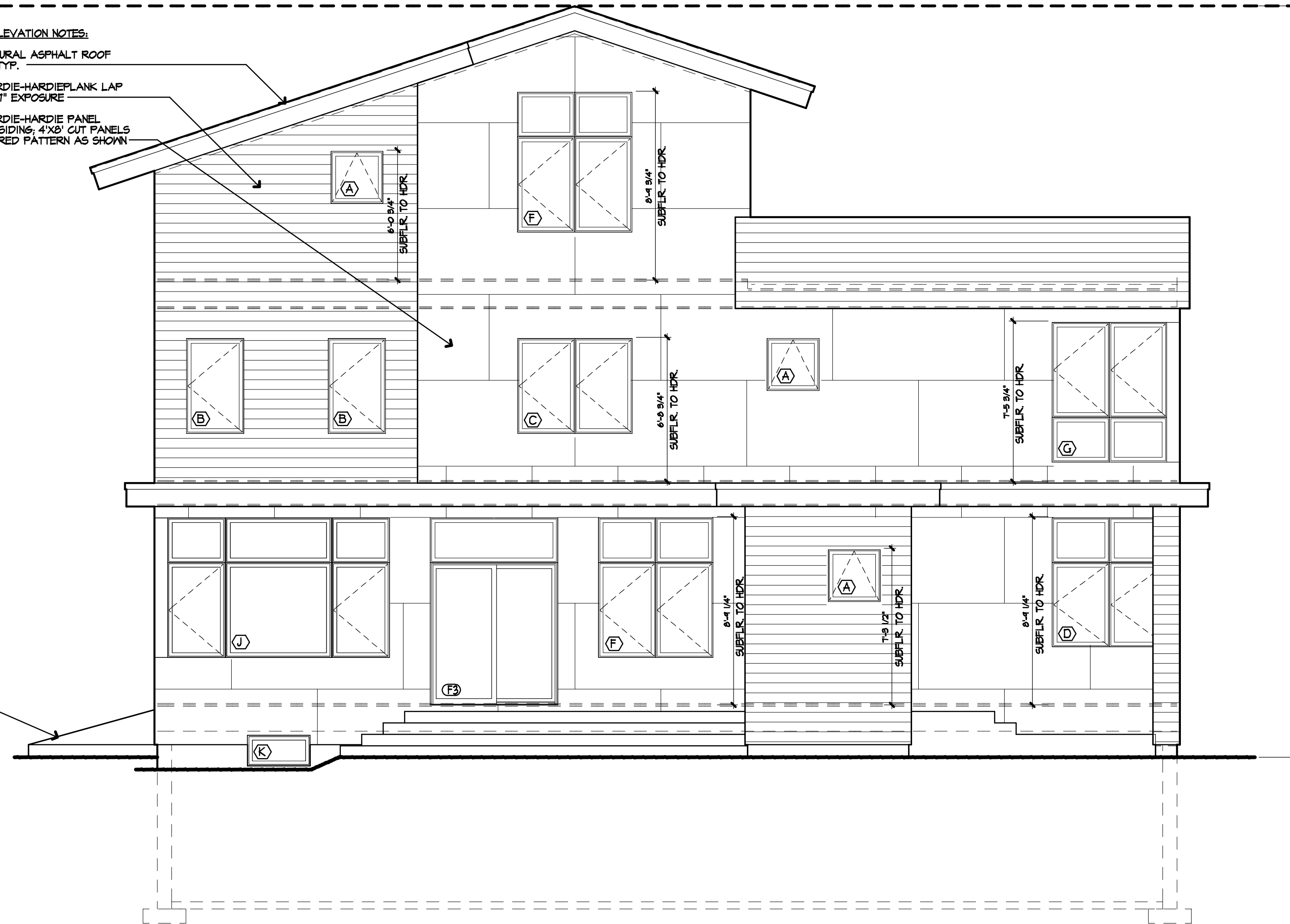
**Kevin Browne Architecture**  
207-847-3499  
kevin@kevinbrownearchitect.com  
7 Breezy Hill Lane  
Fairfield, ME 04105

REVISIONS:  
5-4-15: ISSUE FOR PERMIT  
7-20-15: REISSUE FOR PERMIT

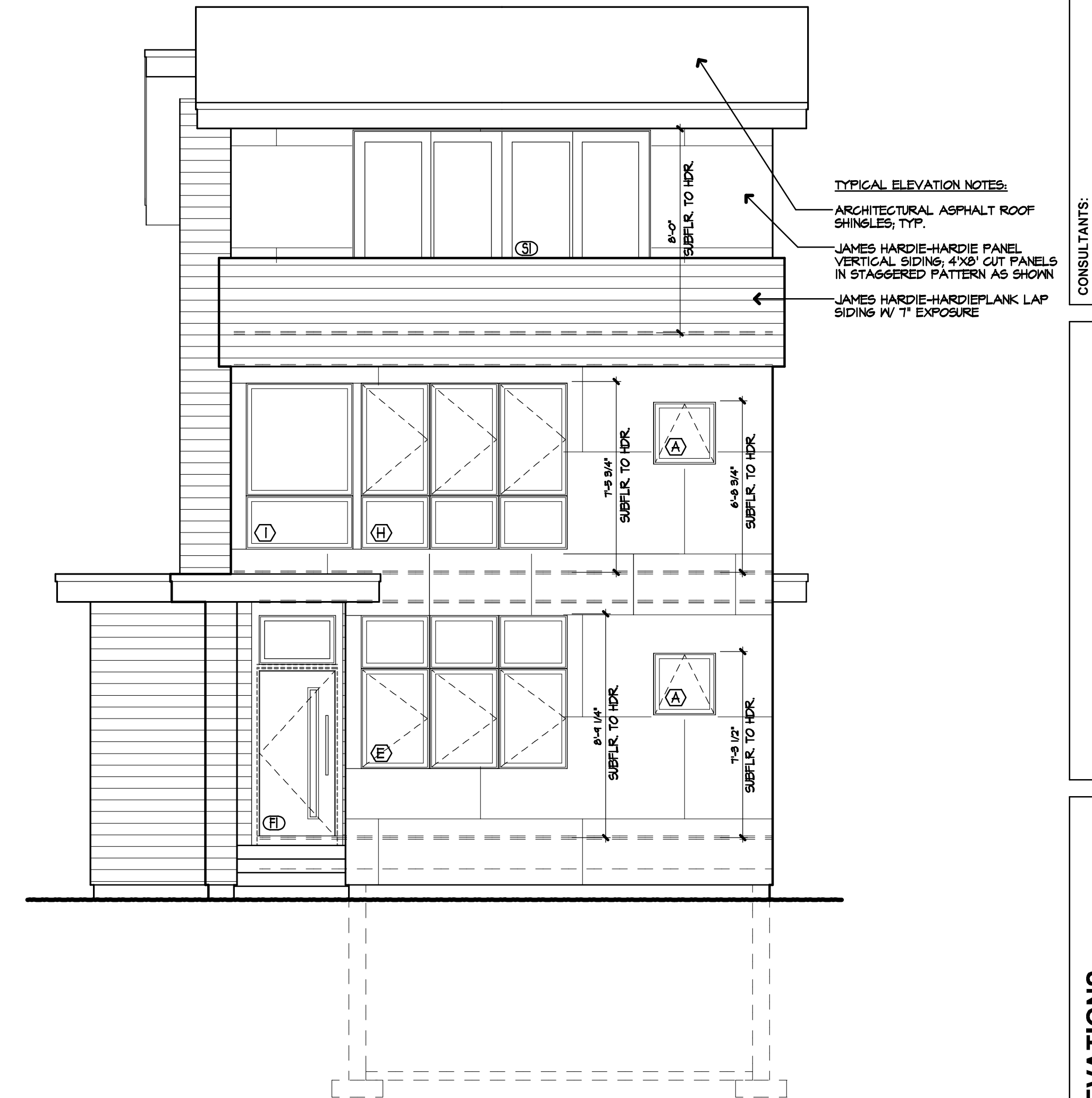
CONSULTANTS:

### TYPICAL ELEVATION NOTES:

- ARCHITECTURAL ASPHALT ROOF SHINGLES, TYP.
- JAMES HARDIE-HARDIEPLANK LAP SIDING W/ 1" EXPOSURE
- JAMES HARDIE-HARDIE PANEL VERTICAL SIDING, 4'X8' CUT PANELS IN STAGGERED PATTERN AS SHOWN



1 SOUTH ELEVATION  
A2.1 1/4" = 1'-0"



2 WEST ELEVATION  
A2.1 1/4" = 1'-0"

**JUDKINS RESIDENCE**

CLIENT:  
TYLER & KATIE JUDKINS

ADDRESS:  
107 MONUMENT ST.  
PORTLAND, ME

ELEVATIONS

DATE: 7/20/2015  
PROJECT NO.: 2015-03  
DRAWN: KWB  
SCALE: 1/4" = 1'-0"

A2.1