

WINDOW SCHEDULE

MARK	TYPE	UNIT	GLAZING	ROUGH OPENING (N X H)	REMARKS
A	AWN	2424	DUAL	2'-5 3/4" X 2'-6 1/4"	1 LITE ANNING
B	CMT	8258	DUAL	2'-8 3/4" X 4'-6 1/4"	1 LITE CASEMENT; MALLED; ESRESS
C	CMT	(2)8258	DUAL	5'-4 3/4" X 4'-6 1/4"	(2) 1 LITE CASEMENTS; MALLED; ESRESS
D	FIXED/CMT	(2)8225/(2)8241	DUAL	5'-4 3/4" X 6'-1 1/4"	(2) 1 LITE FIXED SASH SETS MALLED TO TOP OF (2) 1 LITE CASEMENTS; MALLED; ESRESS
E	FIXED/CMT	(3)8225/(3)8241	DUAL	6'-1 3/4" X 6'-1 1/4"	(3) 1 LITE FIXED SASH SETS MALLED TO TOP OF (3) 1 LITE CASEMENTS; MALLED; ESRESS
F	FIXED/CMT	(2)8225/(2)8258	DUAL	5'-4 3/4" X 6'-1 1/4"	(2) 1 LITE FIXED SASH SETS MALLED TO TOP OF (2) 1 LITE CASEMENTS; MALLED; ESRESS
G	FIXED/CMT	(2)8258/(2)8225	DUAL	5'-4 3/4" X 6'-1 1/4"	(2) 1 LITE CASEMENTS MALLED TO TOP OF (2) 1 LITE FIXED SASH SETS; MALLED; ESRESS
H	FIXED/CMT	(3)8258/(3)8225	DUAL	6'-1 3/4" X 6'-1 1/4"	(3) 1 LITE CASEMENTS MALLED TO TOP OF (3) 1 LITE FIXED SASH SETS; MALLED; ESRESS
I	FIXED	CUSTOM/CUSTOM	DUAL	4'-3" X 6'-1 1/4"	1 LITE CUSTOM PICTURE MALLED TO TOP OF 1 LITE FIXED SASH SET
J	FIXED/CMT	8225/8425/8225 8258/8458/8258	DUAL	10'-5" X 6'-1 1/4"	1 LITE FIXED SASH SET / 1 LITE FIXED SASH SET / 1 LITE FIXED SASH SET MALLED TO TOP OF 1 LITE CASEMENT / 1 LITE PICTURE / 1 LITE CASEMENT
K	AWN	2517	DUAL	2'-11 3/4" X 1'-6 1/4"	1 LITE ANNING
L					
M					
N					
O					

WINDOW SCHEDULE NOTES:

- TYPICAL FLASHING DETAILS SHEET A4.1 & A4.2 DETAILS
- CONTRACTOR SHALL MEASURE AND VERIFY ALL ROUGH OPENINGS WITH WINDOW MANUFACTURERS' PRINTED INFORMATION
- ALL WINDOW ROUGH OPENING DIMENSIONS ARE BASED ON PELLA PROLINE SERIES WINDOWS GLAZING COLOR TO BE '315'
- PELLA WINDOW GLASS SHALL BE DUAL - LOE 180 MTH ARSON
- SUBMIT COMPLETE WINDOW SHOP DRAWINGS TO ARCHITECT FOR REVIEW PRIOR TO ORDERING WINDOWS.
- EACH PANE OF GLAZING INSTALLED IN A 'HAZARDOUS LOCATION' AS DEFINED BY THE IRC 2004, SHALL BE SAFETY GLAZING AS REQUIRED, AND SHALL BE SO LABELLED.
- ROUGH OPENING HEIGHTS LISTED ABOVE ARE PELLA PROLINE SERIES WINDOWS U.L.O. ROUGH OPENING HEIGHT PLUS 1/2" TO ALLOW FOR A GLASSBOARD UNDER WINDOW UNIT FOR DRAINAGE (EXCEPT TRANSOM UNITS)

DOOR SCHEDULE

MARK	TYPE	UNIT	DOOR SLAB U.L.O. (N X H)	TOP OF R.O.	REMARKS
F1	ENTRY	TBD	5'-0" X 7'-0"	-	ENTRY IV TRANSOM
F2	ENTRY	TBD	5'-0" X 7'-0"	-	BASEMENT ACCESS DOOR
F3	SLIDING	1225/1260 FIXED, VENT LEFT	6'-0" X 8'-4"	-	PELLA PROLINE SLIDING DOOR IV FIXED SASH MALLED TO TOP
S1	SLIDING	14146 FIXED/VENT/FIXED	11'-4 1/8" X 8'-0"	-	PELLA ARCHITECT SERIES, QUAD SLIDING FRENCH DOOR

CONTRACTOR SHALL MEASURE AND VERIFY ALL DIMENSIONS AT THE WORK. THIS DRAWING IS A PART OF A FULL SET OF DRAWINGS COMPRISING THE CONTRACT DOCUMENTS FOR THE WORK OF THIS PROJECT. THE ARCHITECT/OWNER ACCEPTS NO RESPONSIBILITY FOR THE CONTRACTOR'S ERRORS OR OMISSIONS IF EACH TRADE DOES NOT HAVE THE FULL SET OF DRAWINGS AND SPECIFICATIONS.

COPYRIGHT 2015 ©
THE MATERIAL CONTAINED IN THESE DRAWINGS AND THE DESIGN THEY ARE INTENDED TO CONVEY ARE THE EXCLUSIVE PROPERTY OF KEVIN BROWNE ARCHITECTURE LLC. POSSESSION AND USE HEREOF IS GRANTED ONLY CONFIDENTIALLY IN CONNECTION WITH CONSTRUCTION OF THE BUILDING DESCRIBED HEREIN AS AUTHORIZED BY KEVIN BROWNE ARCHITECTURE LLC. THE RECIPIENT AGREES TO ABIDE BY THESE RESTRICTIONS. ANY USE, REPRODUCTION OR DISCLOSURE OF ANY INFORMATION, IN WHOLE OR IN PART, CONTAINED HEREIN, WITHOUT WRITTEN PERMISSION OF KEVIN BROWNE ARCHITECTURE LLC IS EXPRESSLY PROHIBITED.

KB A
kevin browne
ARCHITECTURE

207 - 847 - 3499
kevin@kevinbrowne
architecture.com

7 breezy hill lane
falmouth, me 04105

REVISIONS:
5-4-15: ISSUE FOR PERMIT

CONSULTANTS:

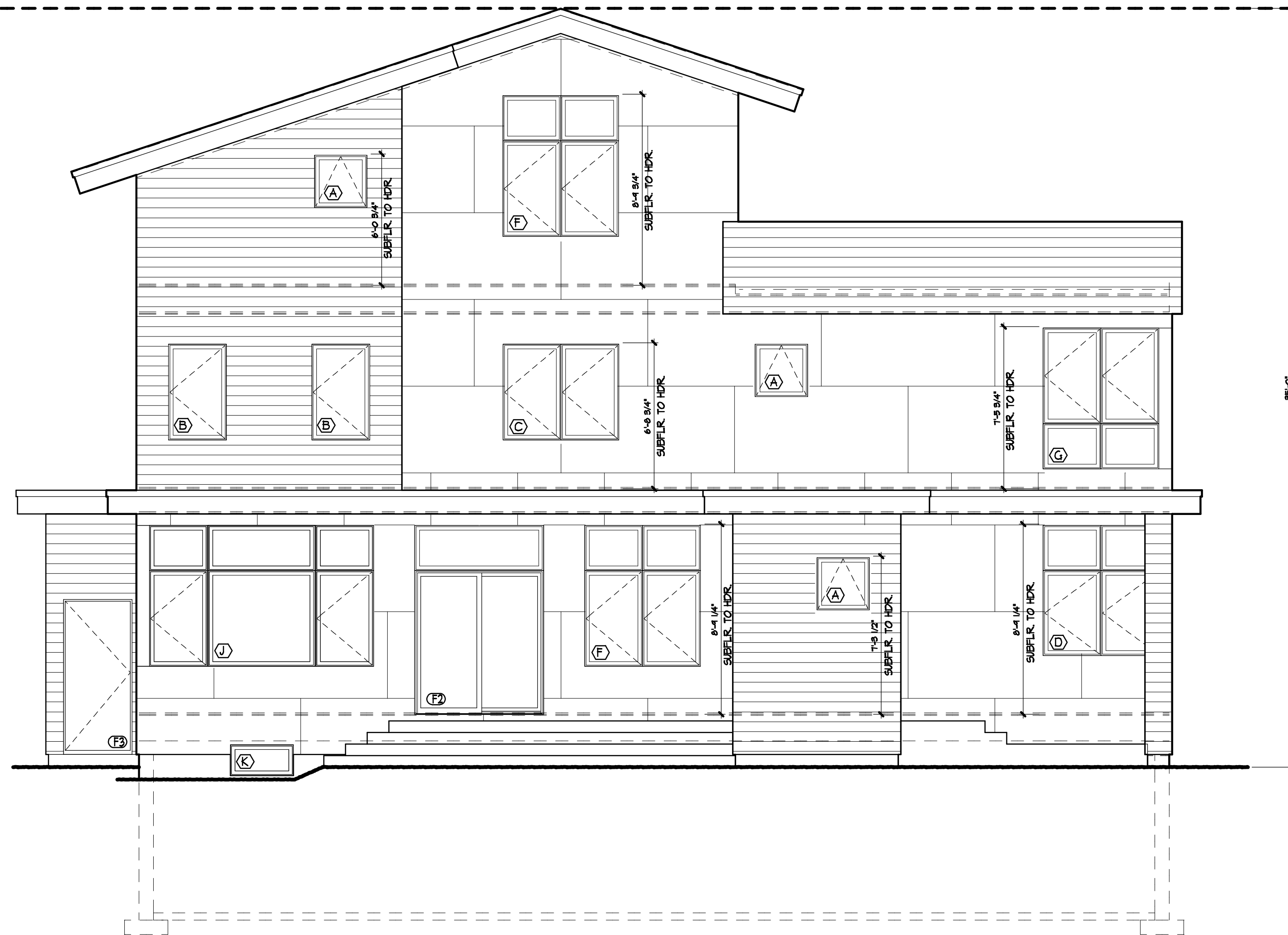
JUDKINS RESIDENCE

CLIENT:
TYLER & KATIE JUDKINS

ADDRESS:
107 MONUMENT ST.
PORTLAND, ME

ELEVATIONS

DATE: 5/4/2015
PROJECT NO.: 2015-03
DRAWN: KWB
SCALE: 1/4" = 1'-0"



1 SOUTH ELEVATION
A2.1 1/4" = 1'-0"



2 WEST ELEVATION
A2.1 1/4" = 1'-0"

A2.1