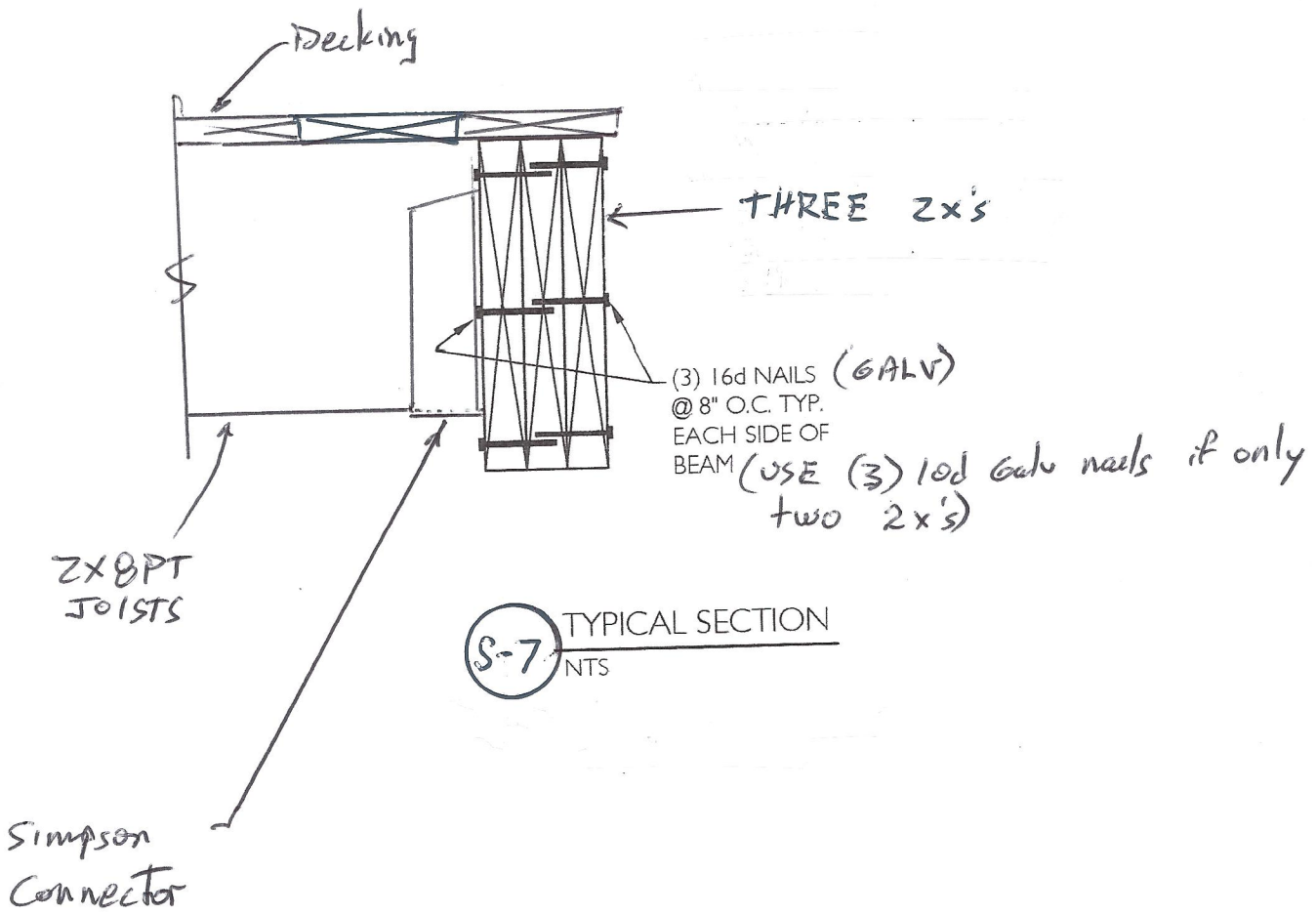


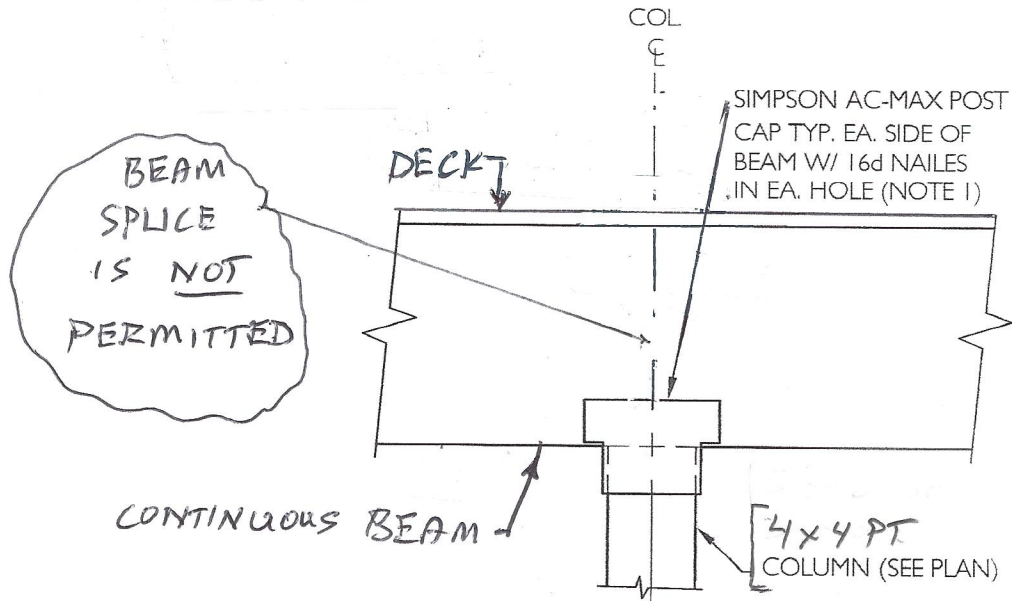
NOTES:

1. Other adjacent framing not shown for clarity.
2. Anchor bottom of post (or column) to support w/ Simpson Post Base Anchor.

S-6
NTS

TYPICAL BEAM BEARING
ON END POST





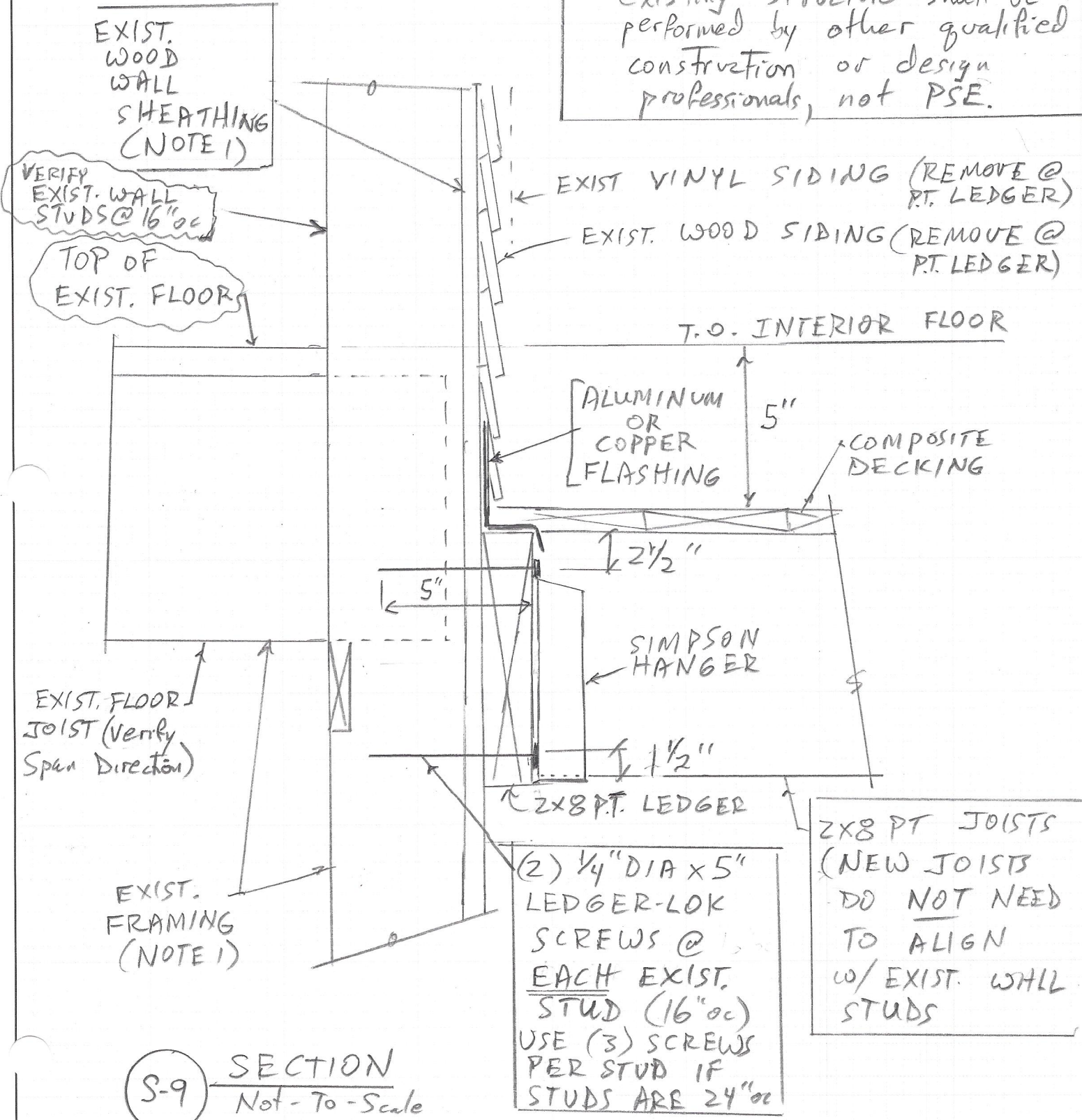
TYPICAL BEAM BEARING
AT INTERIOR COLUMNS
SECTION

S-8
NTS

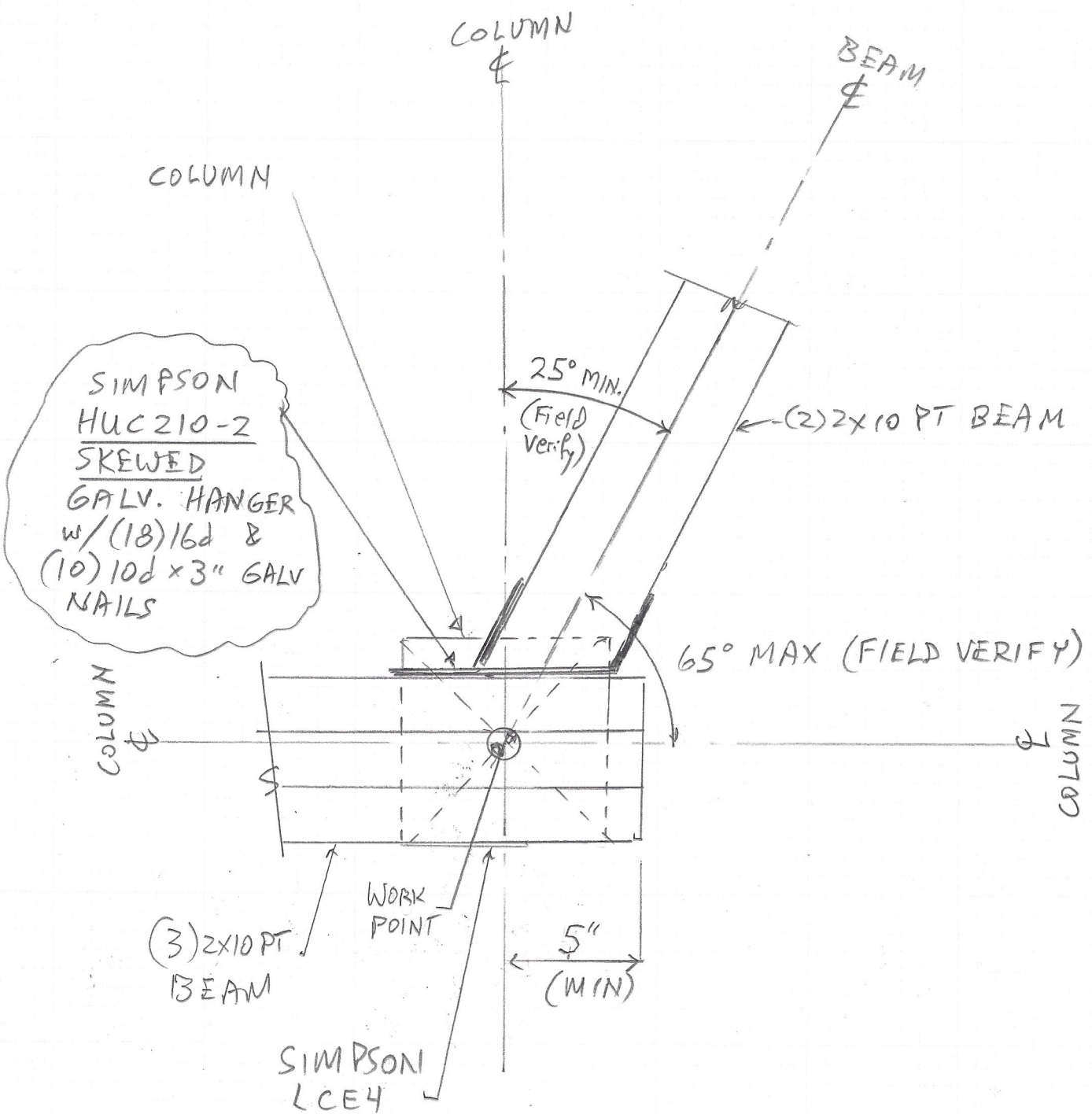
Project: <i>Goodenberger Deck</i>	Sheet: <i>S-9</i>
Subject: <i>Section</i>	of
Date: <i>Aug 2014</i>	Job #: <i>127-14</i>
Designed by: <i>DAP</i>	Checked by:

NOTES:

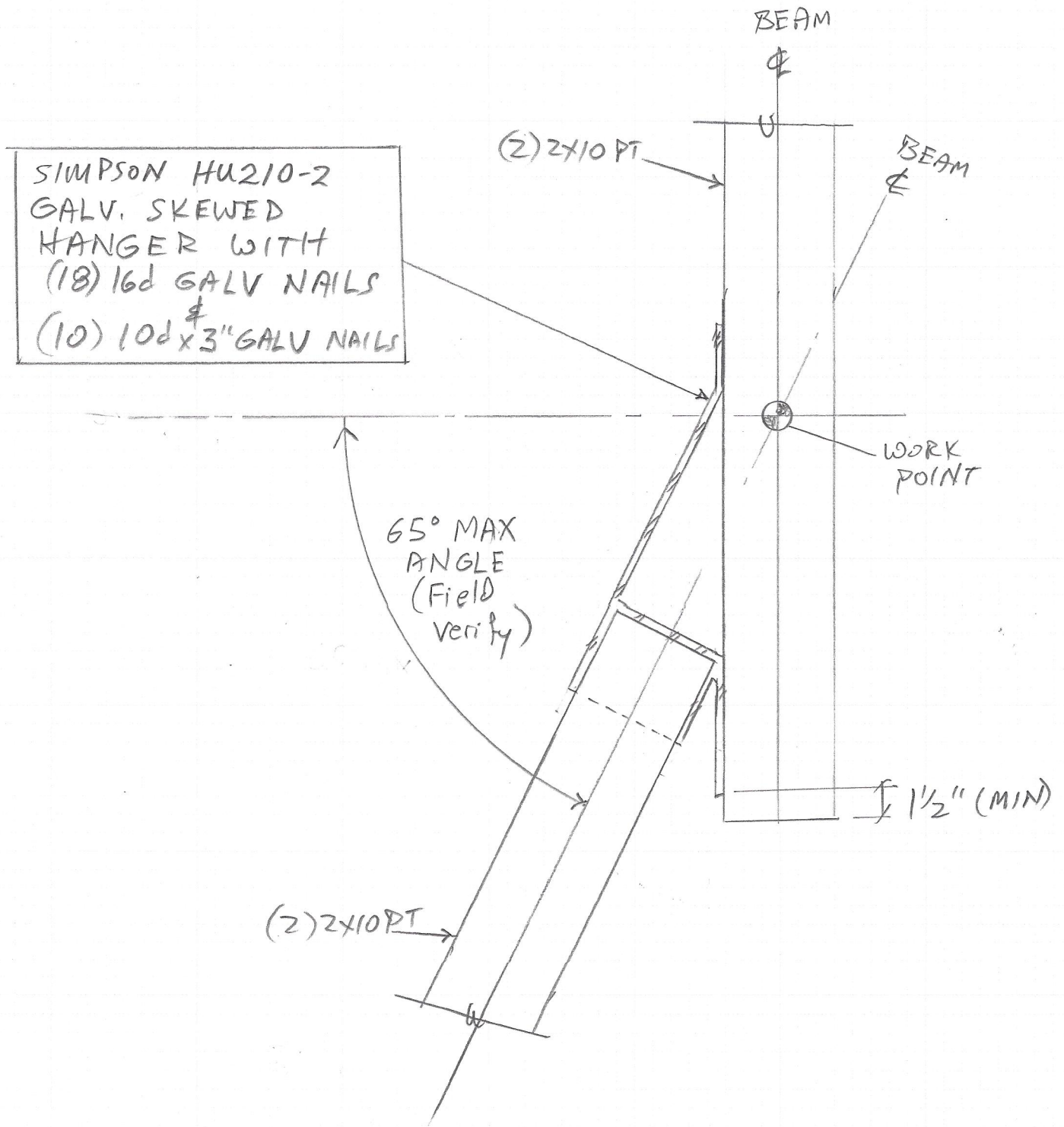
1. Verifying the adequacy of the existing structure shall be performed by other qualified construction or design professionals, not PSE.



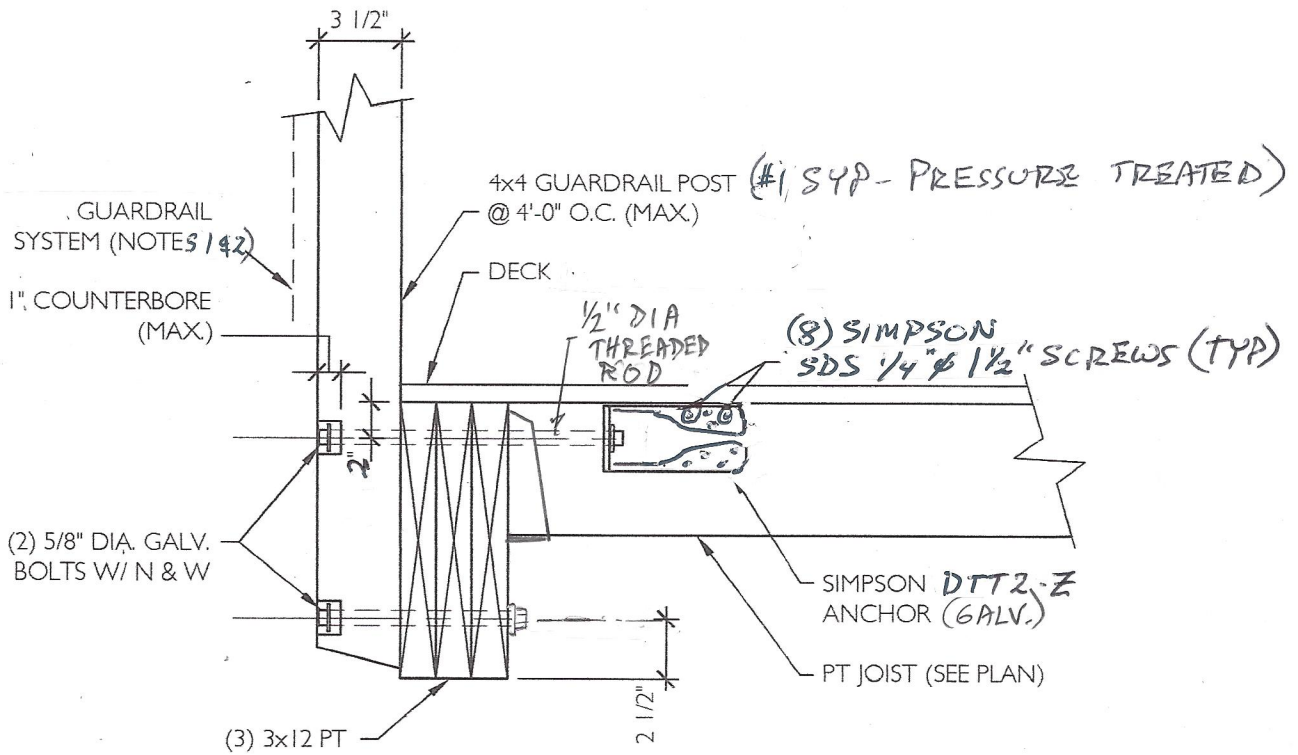
S-9 SECTION
Not-To-Scale



PLAN
 S-10 —————
 3" = 1'-0"



(S-11) PLAN
3" = 1'-0"



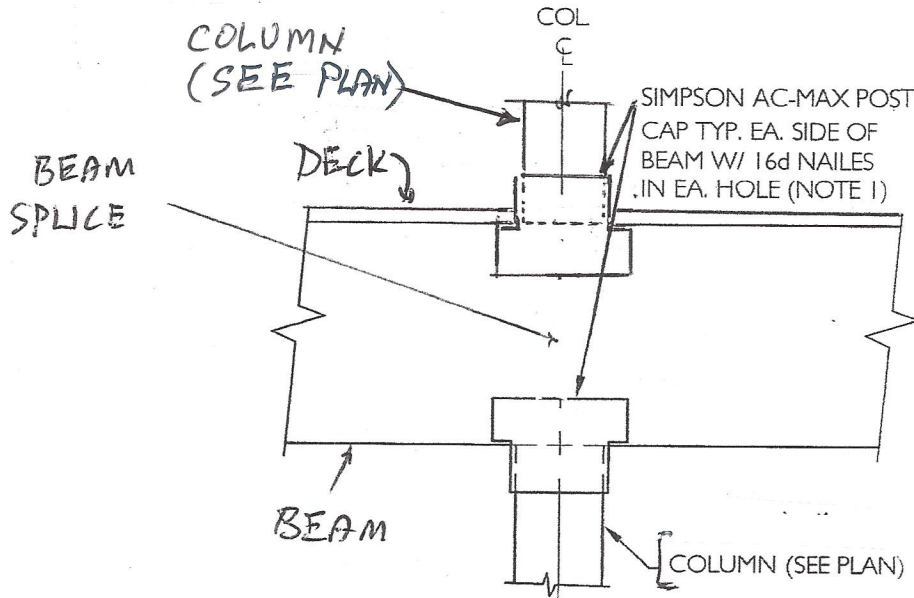
NOTES:

1. Guardrail system shall be capable of resisting the following loads:
 - a. 200 lb. concentrated load applied any direction at any point at the top of the handrail.
 - b. 50 lb./ft. distributed load applied in any direction at the top of the handrail.
 - c. 50 lb. concentrated horizontal load applied to a 1.0 square foot area at intermediate rails.

2. The opening clear distance shall be less than 0'-4" at balustrades & other guardrail components.

S-12

SECTION
NTS

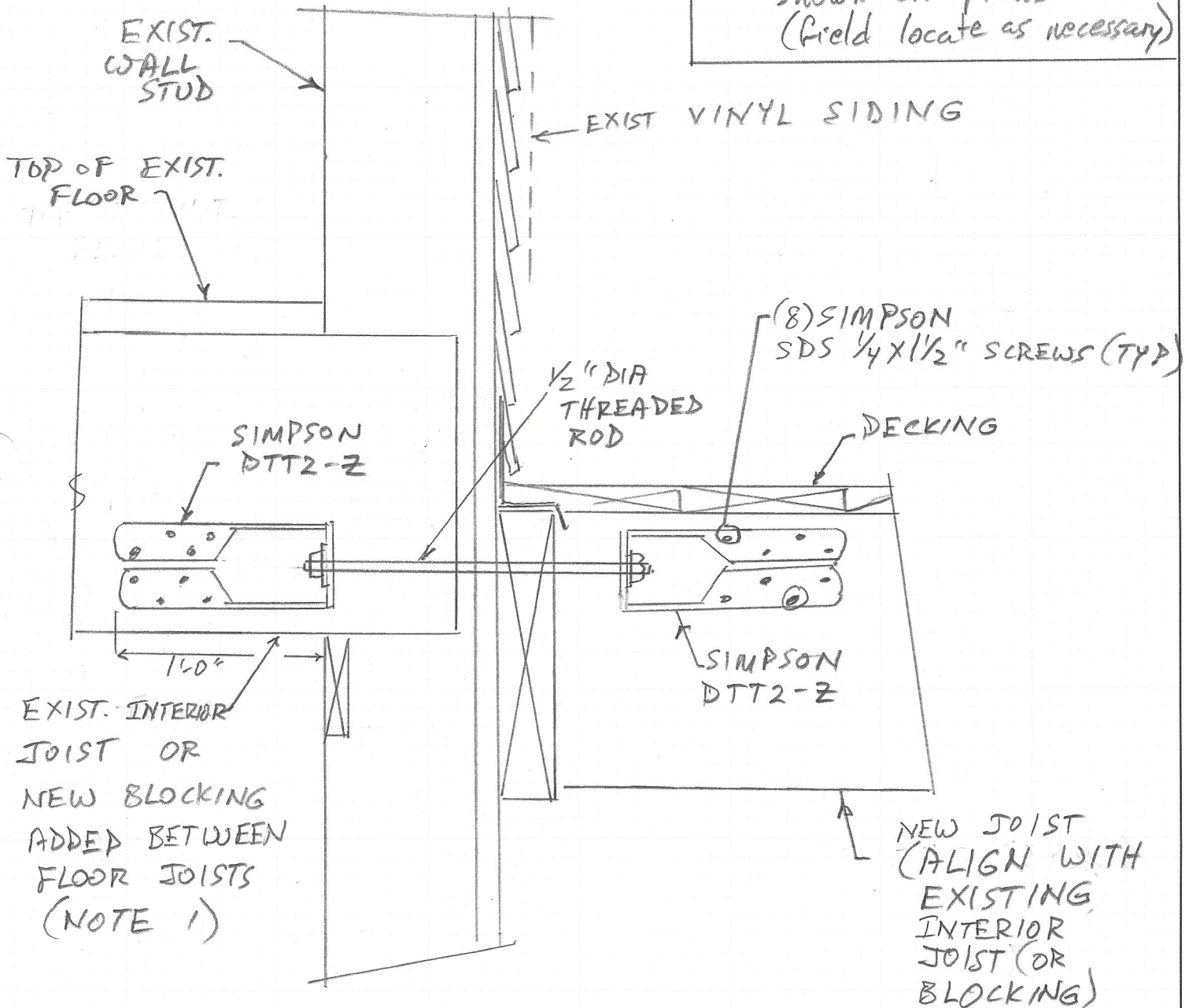


TYPICAL BEAM BEARING
AT INTERIOR COLUMNS
SECTION

S-13
NTS

NOTES:

- Final locations of tie-back anchors shall be located near positions shown on plans (field locate as necessary)



S-14 DECK TIE-BACK SECTION
 Not - To - Scale