

Project · Reference number

Date

Application

LED pole top luminaire with asymmetrical flat beam light distribution.

The used LED technique offers durability and optimal light output with low power consumption at the same time.

The asymmetrical and flat beam light distribution is suitable especially for the illumination of streets according to DIN EN 13 201.

For mounting heights 4000 - 6000 mm.

Product description

Luminaire made of aluminium alloy, aluminium and stainless steel

Safety glass with optical structure

Silicone gasket

Reflector made of anodised pure aluminium

Toolless closure

Attack angle adjustable in steps of 10° up to +90°

For pole top \varnothing 76 mm

Slip fitter insert depth 90 mm

Connecting cable X05BQ-F 5 G 1[□]

Cable length 6 m

LED power supply unit

220-240 V \sim 0/50-60 Hz

DC 170-280 V

Dimmable 1-10 V

SELV (safety extra-low voltage)

A basic isolation exists between power cable and control line


Luminaire: Protection class IP 66


Dust-tight and protection against strong water jets

Safety class I

Impact strength IK09

Protection against mechanical impacts < 10 joule

 - Safety mark

 - Conformity mark

Wind catching area: 0.06 m²

Weight: 8.4 kg

Lamp

Module connected wattage

21 W

Luminaire connected wattage

25.5 W

Rated temperature

$t_a = 25^\circ\text{C}$

Ambient temperature

$t_{a\text{max}} = 55^\circ\text{C}$

77 928

Module designation 2x LED-0316/840

Colour temperature 4000 K

Colour rendering index $R_a > 80$

Module luminous flux 2700 lm

Luminaire luminous flux 2045 lm

Luminaire luminous efficiency 80,2 lm/W

77 928 K3

Module designation 2x LED-0316/830

Colour temperature 3000 K

Colour rendering index $R_a > 80$

Module luminous flux 2460 lm

Luminaire luminous flux 1862 lm

Luminaire luminous efficiency 73 lm/W

Lifetime of the LED

Ambient temperature $t_a = 15^\circ\text{C}$

- at 50,000h: L90 B10

- at > 500,000h: L70 B50

Ambient temperature $t_a = 25^\circ\text{C}$

- at 50,000h: L90 B10

- at 480,000h: L70 B50

max. ambient temperature $t_a = 55^\circ\text{C}$

- at 50,000h: L90 B50

- at 210,000h: L70 B50

Article No. 77 928

Colour temperature 4000 K.

Also available with 3000 K on request.

4000 K - article number

3000 K - article number + **K3**

Colour graphite or silver

graphite - article number

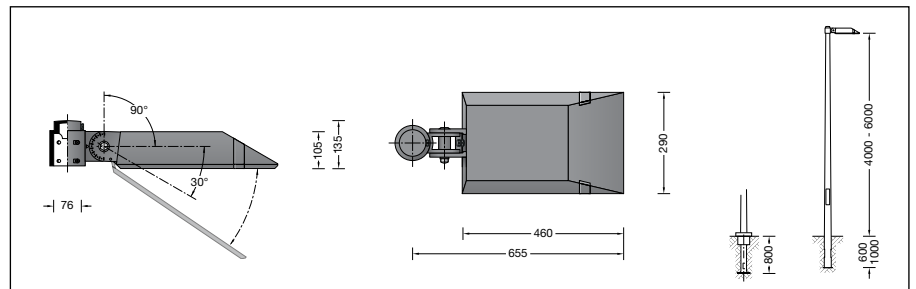
silver - article number + **A**

Accessories

For this luminaire a comprehensive range of accessories is available - see BEGA web page www.bega.com.



www.bega.com

**Light distribution**