

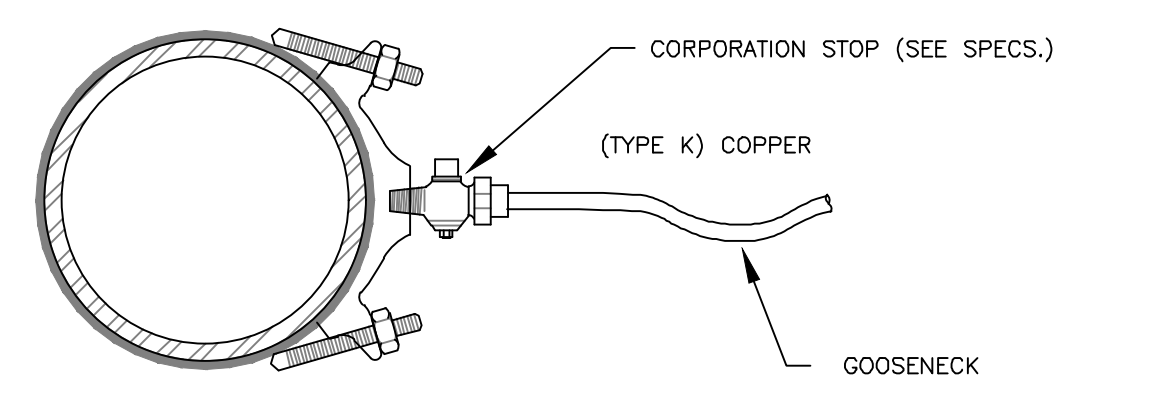
ISSUED FOR	BY DATE
PRELIM. APPLICATION	WHS 1/25/16
FINAL APPLICATION	WHS 3/17/16
BUILDING PERMIT	WHS 4/7/16
REVISION	REV. DATE

UTILITY DETAILS
31 FORE STREET REDEVELOPMENT
 PENINSULA PROPERTY DEVELOPMENT, LLC.
 59 MOODY STREET, PORTLAND MAINE 04101

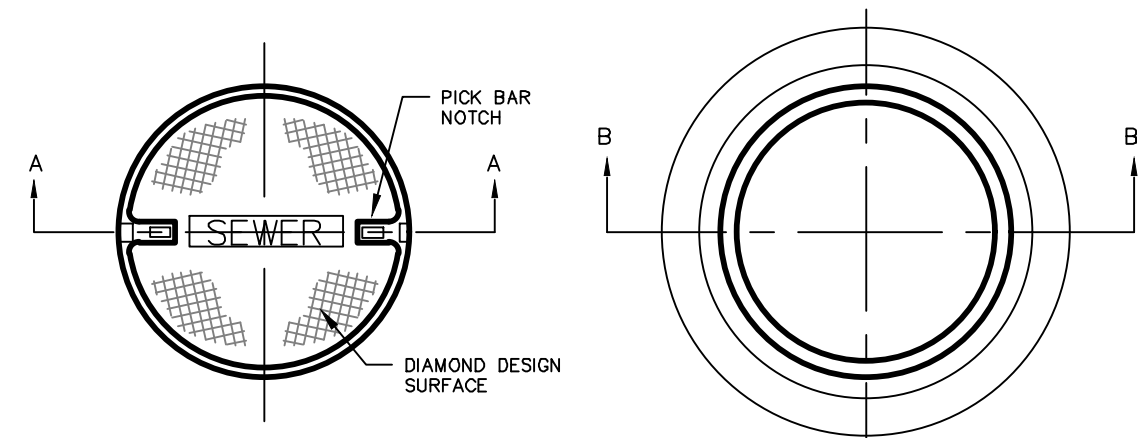
ACORN ENGINEERING, INC.
 ENGINEERING, INC.
 158 DANFORTH (207) 779-2665

FILE:	1068_DETAILS
DATE:	12/28/15
JN:	1068
SCALE:	NTS
DESIGNED BY:	WHS
DRAWN BY:	WHS
CHECKED BY:	WHS

DRAWING NO.
C-42



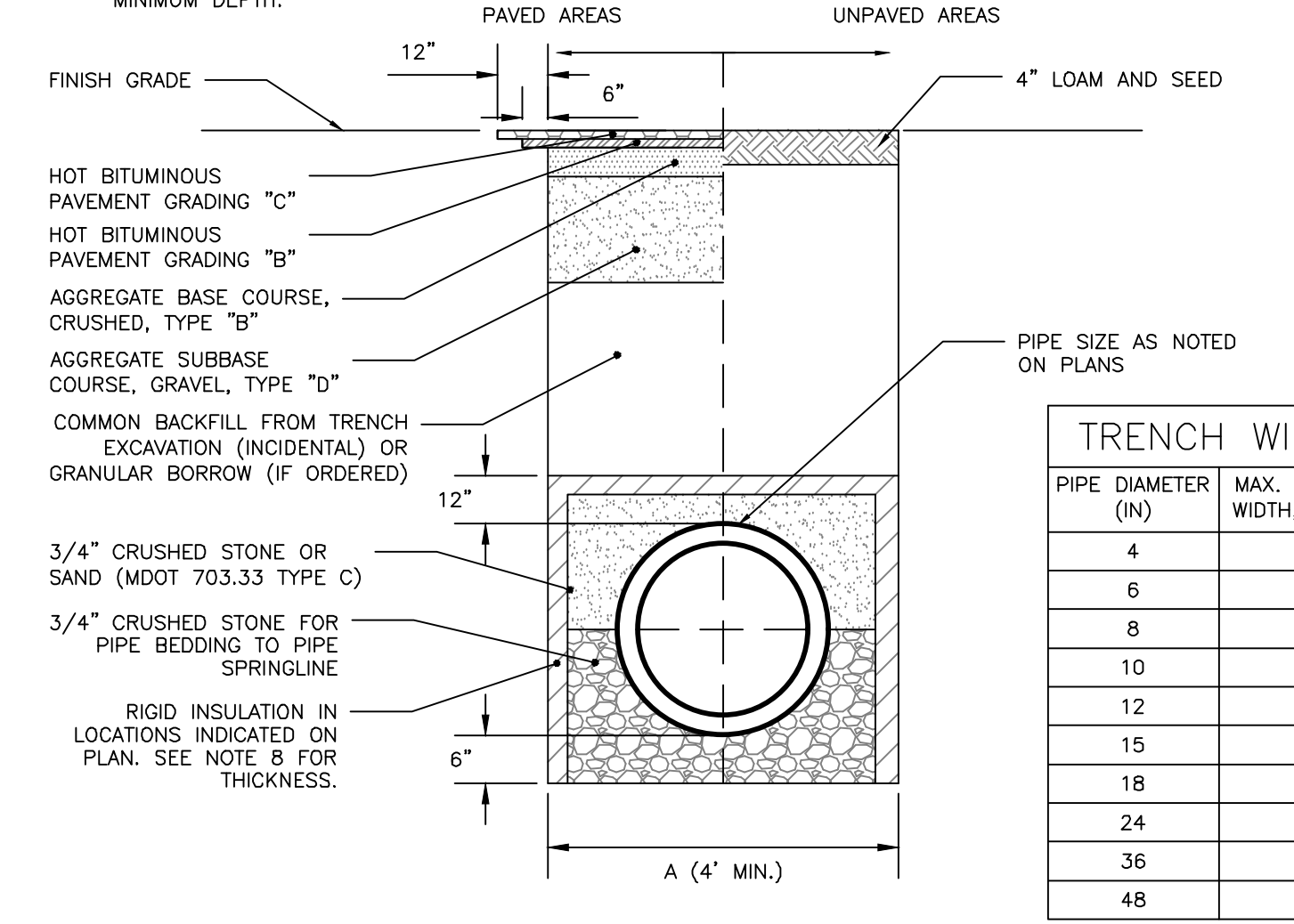
SERVICE SADDLE: 1-1/2" AND 2" C.C. THREAD)
 NOT TO SCALE



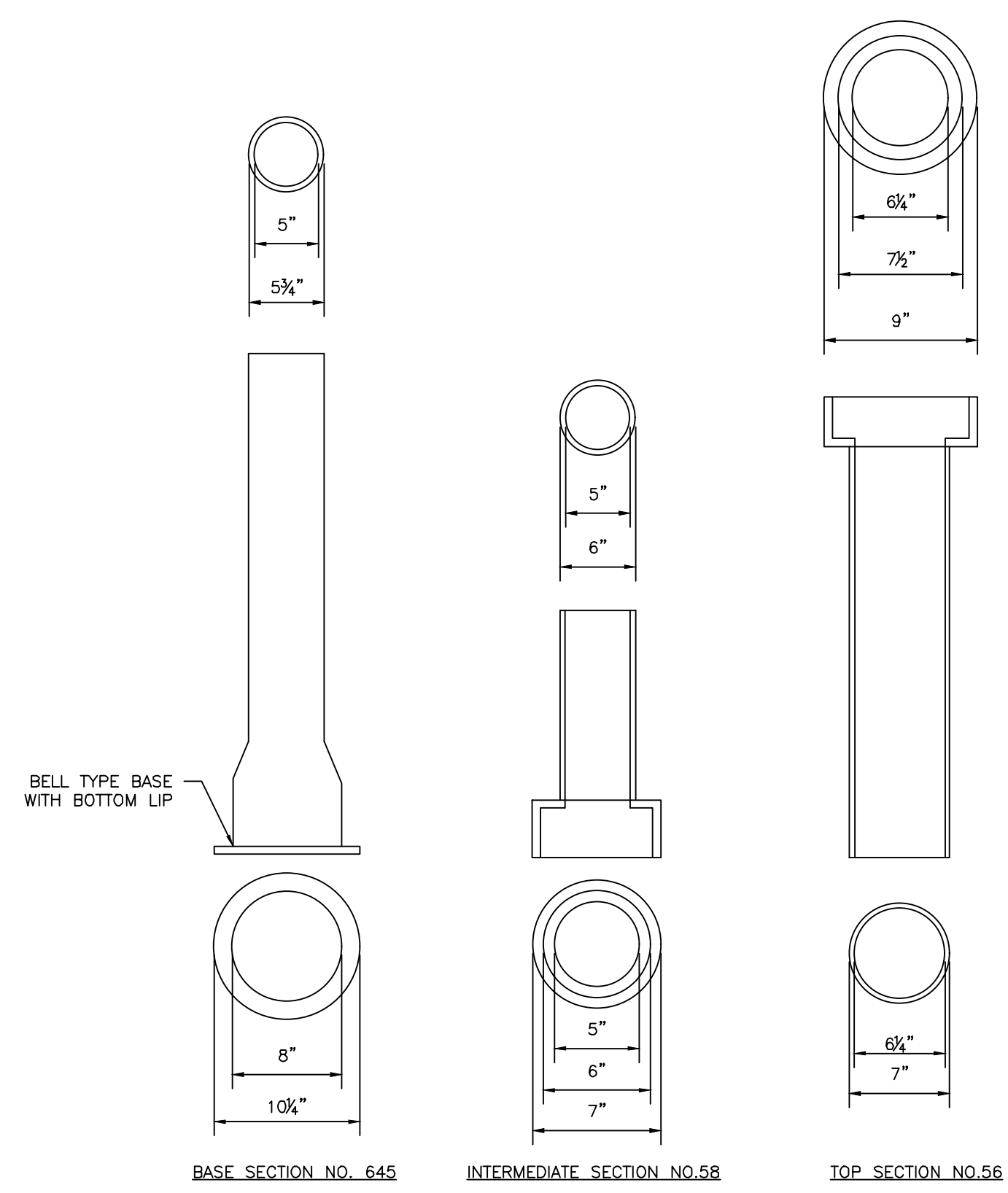
CAST IRON MANHOLE COVER AND FRAME
 NOT TO SCALE

- NOTES:
1. ALL SANITARY AND STORMWATER/RAIN MANHOLE COVERS SHALL BE 24" x 5".
 2. ALL SANITARY MANHOLE COVERS SHALL HAVE "SEWER" CAST INTO THE COVER.
 3. ALL STORMWATER/RAIN MANHOLE COVERS SHALL HAVE "RAIN" CAST INTO THE COVER.
 4. APPROVED MANHOLE FRAMES:
 - 4.1. EAST JORDAN = 16902
 - 4.2. OR APPROVED EQUAL
 5. APPROVED MANHOLE COVERS:
 - 5.1. EAST JORDAN = 2160A
 - 5.2. OR APPROVED EQUAL
 6. FRAME AND COVER CONSTRUCTION SHALL BE COMPATIBLE WITH STANDARD PRECAST SEWER MANHOLE DETAIL.

- NOTES:
1. ANY ALTERNATE TRENCHING METHODS SHALL BE APPROVED IN ADVANCE BY THE CITY.
 2. ALL CONSTRUCTION METHODS SHALL CONFORM TO THE CITY OF PORTLAND TECHNICAL STANDARDS FIGURE II-2.
 3. BRACING & SHEETING OR OTHER TRENCH PROTECTION TO BE PROVIDED TO MEET APPLICABLE STATE AND O.S.H.A. SAFETY STANDARDS. ALL SUCH TRENCH PROTECTION SHALL BE THE RESPONSIBILITY OF THE CONTRACTOR.
 4. WHERE APPLICABLE, PERFORATIONS IN STORM DRAIN (PERFSD) SHALL BE ORIENTED UP.
 5. ALL STORM DRAINS SHALL BE PVC SDR 35 MIN PS-46 RATING OR IN ACCORDANCE WITH CITY OF PORTLAND TECHNICAL MANUAL - SECTION 2 - SANITARY SEWER AND STORM DRAIN - PART 2.5.2
 6. IN PAVED AREAS, DEPTHS OF GRAVEL AND HOT MIX ASPHALT PAVEMENT SHALL MATCH THE GREATER OF EXISTING CONDITIONS OR THE REQUIREMENTS FOR THE CORRESPONDING STREET CLASSIFICATION.
 7. THIS DETAIL SHALL BE APPLIED ONLY TO PIPE TRENCHES WITHIN OF THE CITY OF PORTLAND ROW STORM DRAIN COVER BETWEEN 2' AND 3' SHALL INCLUDE 4" OF RIGID INSULATION, COVER BETWEEN 3' AND 4' SHALL INCLUDE 2" RIGID INSULATION, OTHER UTILITIES: ADD 2" OF RIGID INSULATION FOR EACH FOOT ABOVE MINIMUM DEPTH.

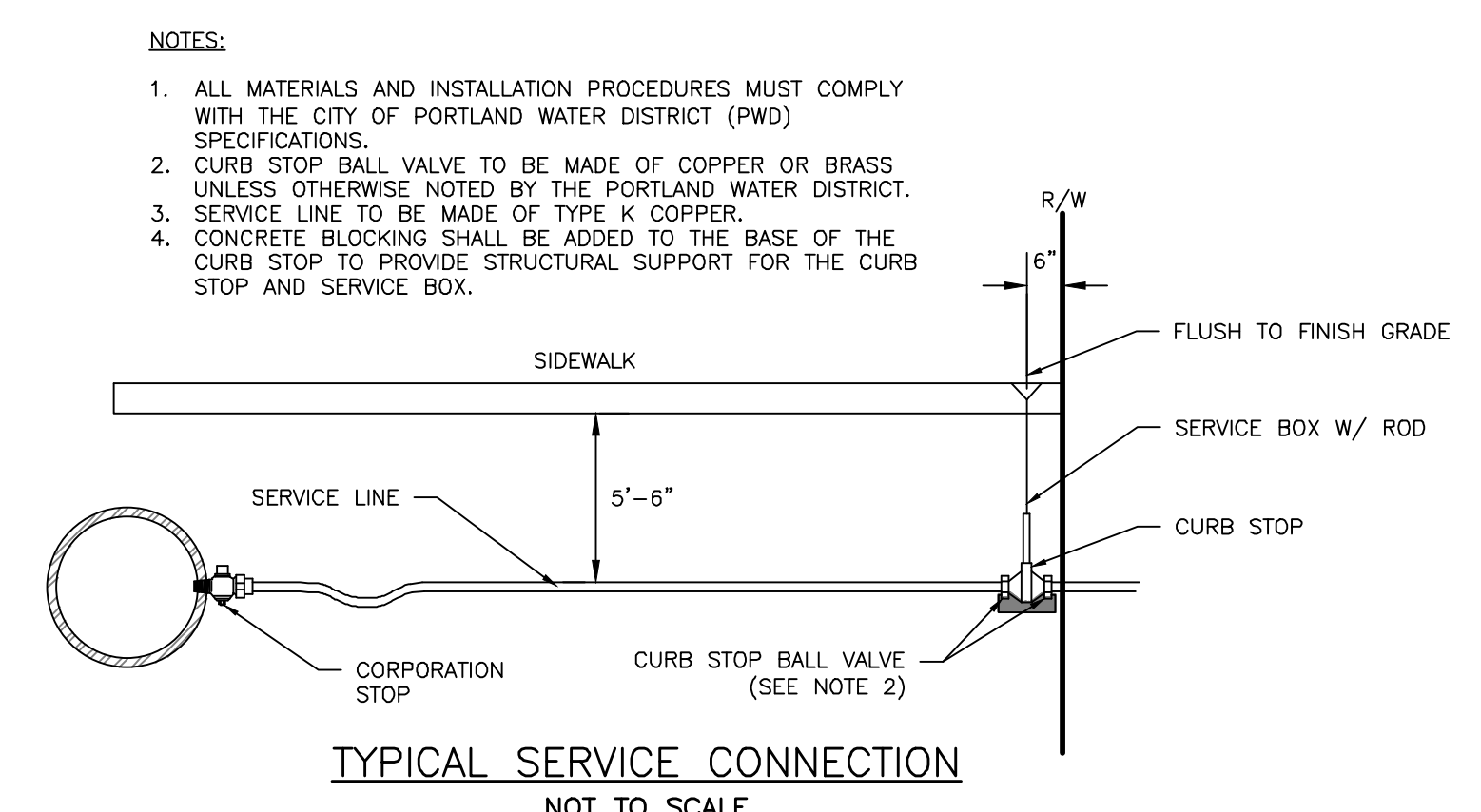


CITY OF PORTLAND TYPICAL PIPE TRENCH DETAIL
 NOT TO SCALE

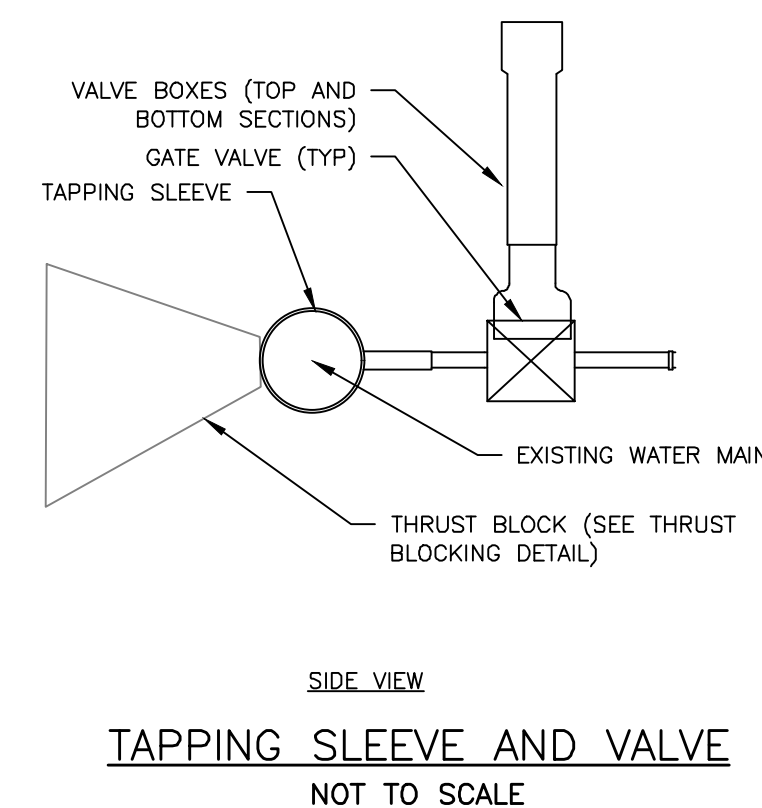


VALVE BOX & COVER
 NOT TO SCALE

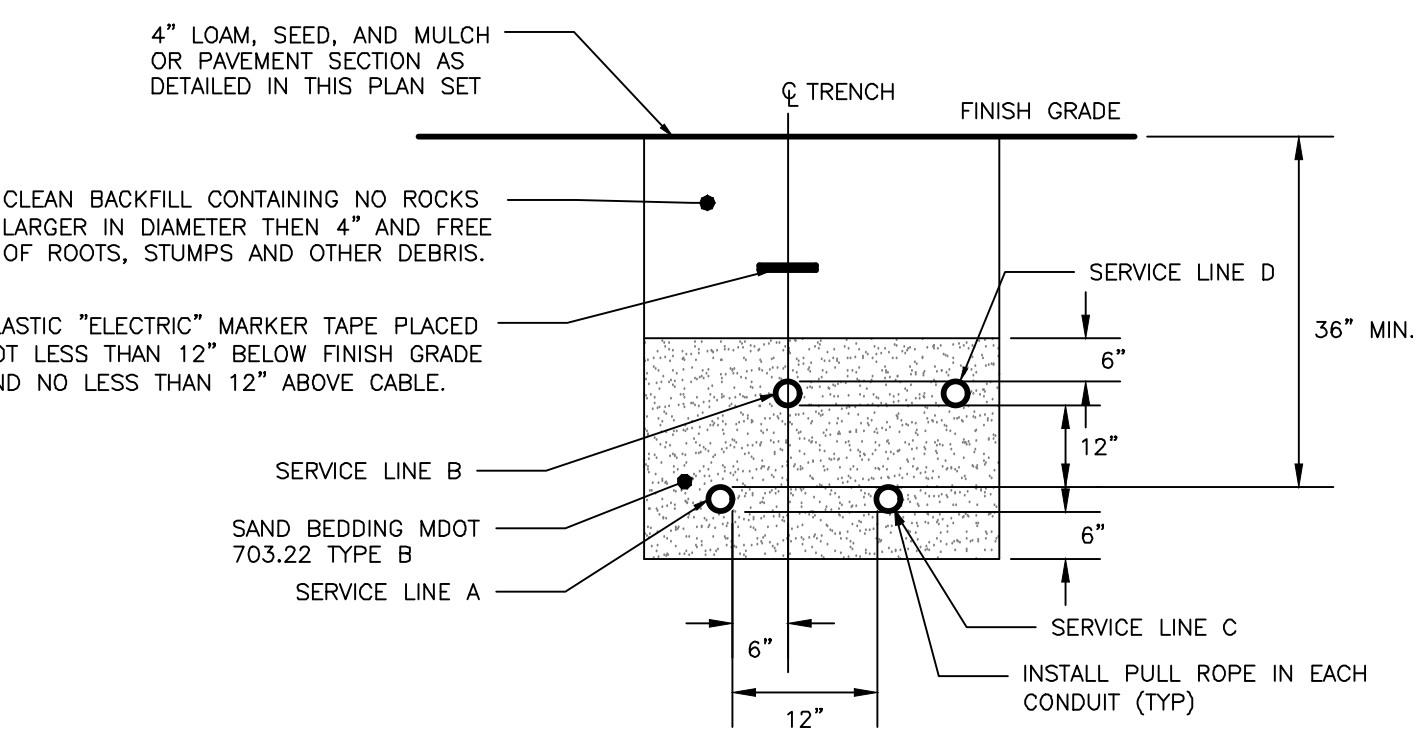
- NOTES:
1. DIMENSIONS APPLICABLE FOR 5 3/4" BUFFALO VALVE BOXES
 2. BASE SECTION MAY BE USED AS INTERMEDIATE SECTION



TYPICAL SERVICE CONNECTION
 NOT TO SCALE



TAPPING SLEEVE AND VALVE
 NOT TO SCALE

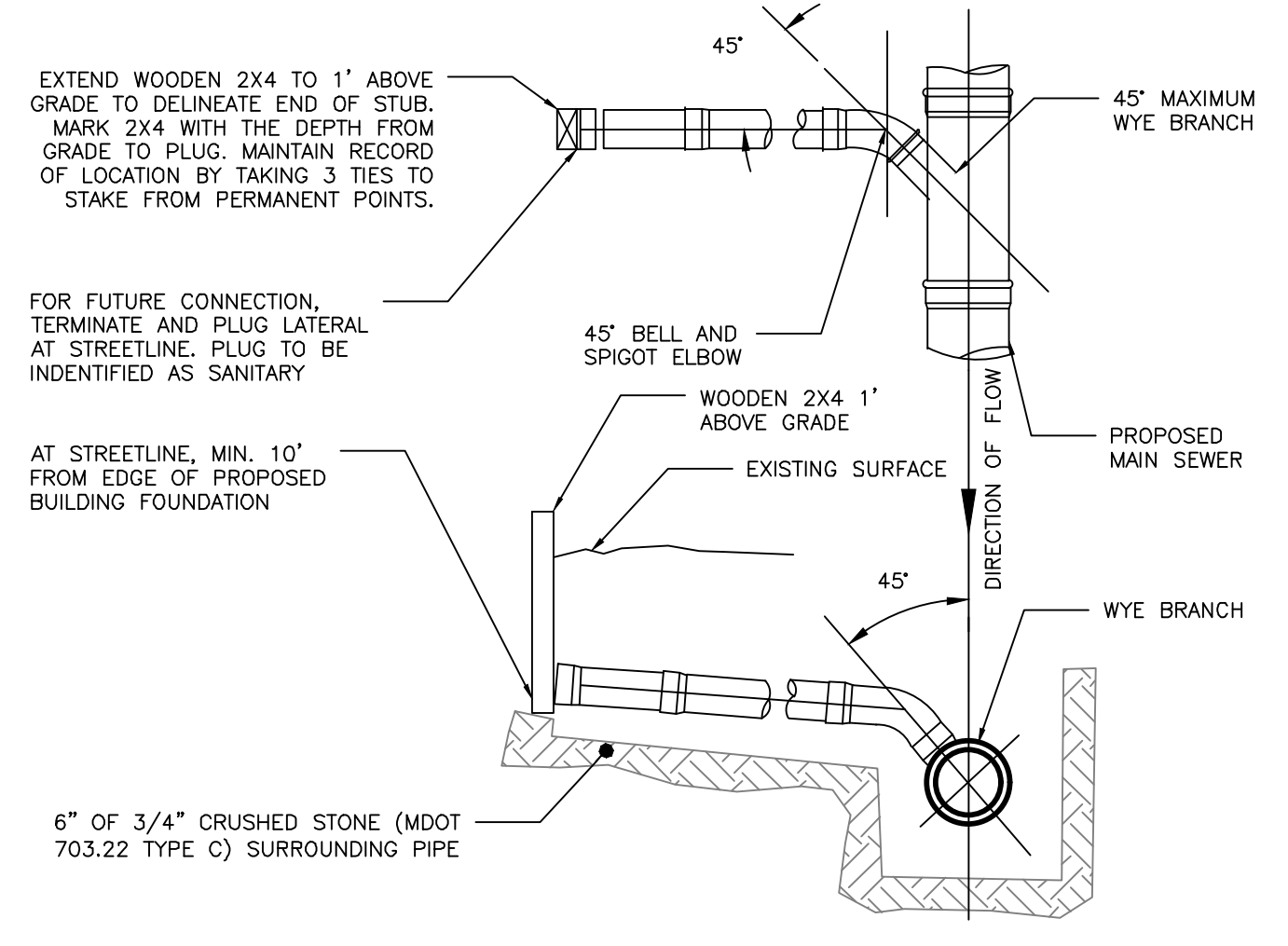


CONDUIT TYPE				
SERVICE	CONDUIT SIZE	GRASS AND PAVED AREAS	UTILITY	REMARKS
A	2-5"	SCHEDULE 40 PVC ELECTRICAL GRADE	PRIMARY POWER	SEE NOTE 1
B	2-4"	SCHEDULE 40 PVC	COMMUNICATION	-
C	2-4"	SCHEDULE 40 PVC ELECTRICAL GRADE	SPARE	IF REQUIRED
D	2-4"	SCHEDULE 40 PVC	CABLE	-

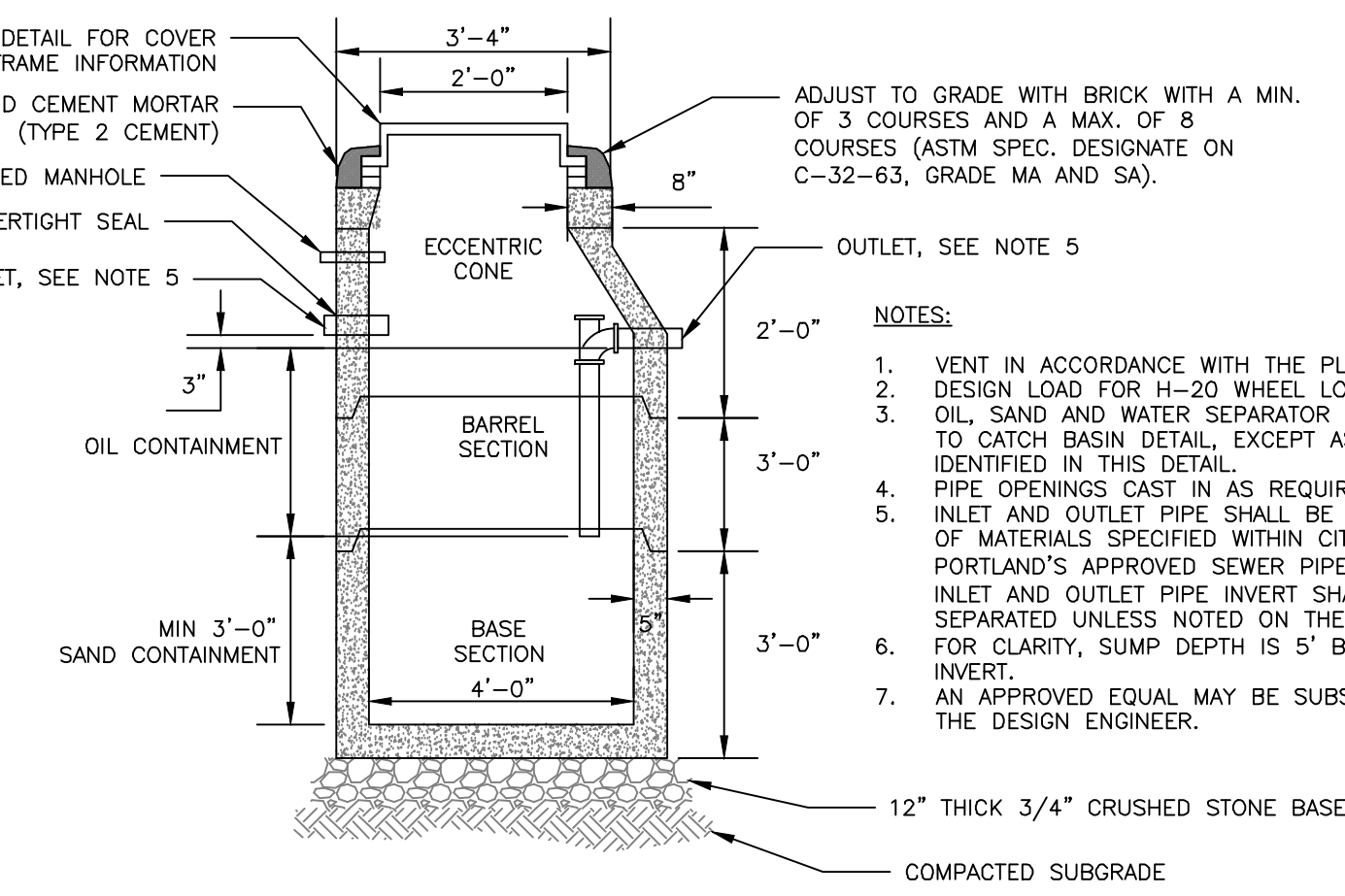
- NOTES:
1. ONE CONDUIT CAPPED FOR SPARE, PROVIDE GALVANIZED STEEL LONG SWEEP AT RISER POLE AND EXTEND GALVANIZED CONDUIT TO 10" ABOVE GRADE AT POLE WITH STAND-OFF BRACKETS.
 2. MINIMUM SEPARATION OF 24 INCHES BETWEEN PRIMARY CABLE/CONDUIT AND GAS LINES SHALL BE MAINTAINED.

UTILITY TRENCH: PRIMARY AND SECONDARY POWER, TELEPHONE, AND CABLE
 NOT TO SCALE

- NOTES:
1. LOCATION WITH WARNING TAPE SHALL BE INSTALLED OVER CENTERLINE OF PIPE AT A MAXIMUM OF 24 INCHES BELOW FINISH GRADE.
 2. SITE CONTRACTOR TO COORDINATE CONNECTION OF SEWER LATERAL TO HOUSEHOLD PLUMBING WITH ARCHITECTURAL CONTRACTOR.
 3. CONNECTION OF PROPOSED SEWER LATERAL TO HOUSEHOLD PLUMBING SHOULD INCORPORATE USE OF SIMILAR PIPE MATERIALS. IN THE CASE OF DISSIMILAR PIPES BEING USED, A FERROC FLEXIBLE COUPLING SHALL BE USED.

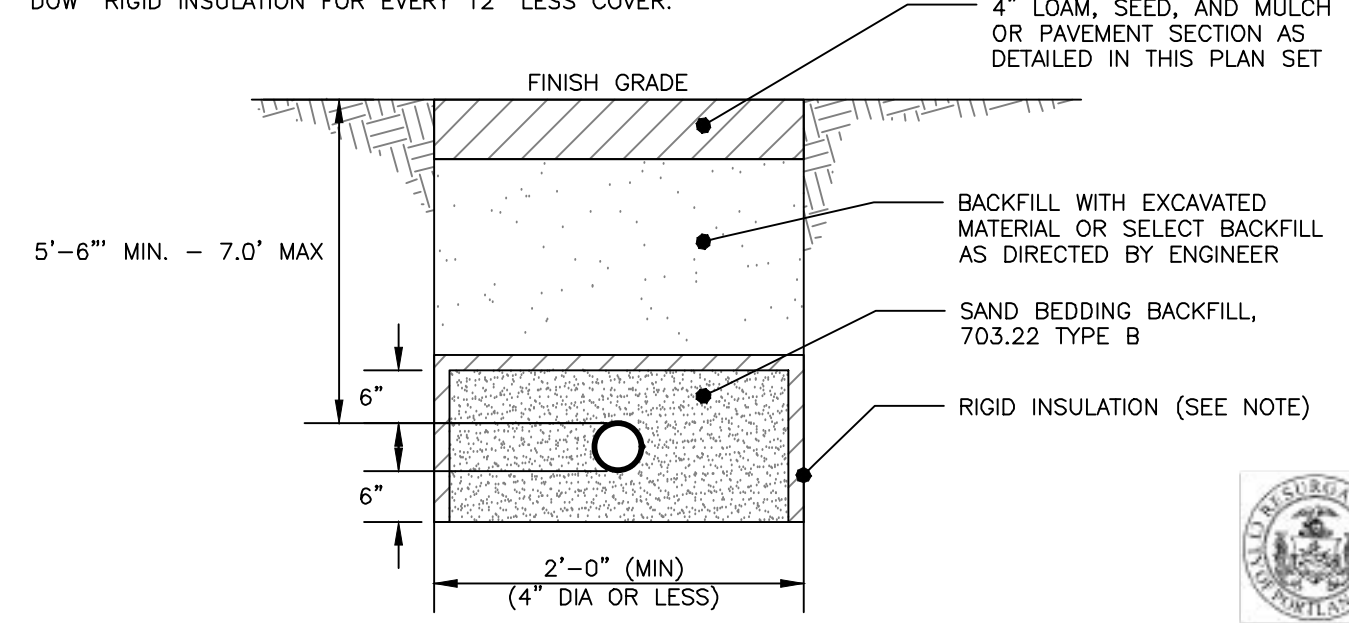


SEWER TEE/WYE CONNECTION DETAIL
 NOT TO SCALE



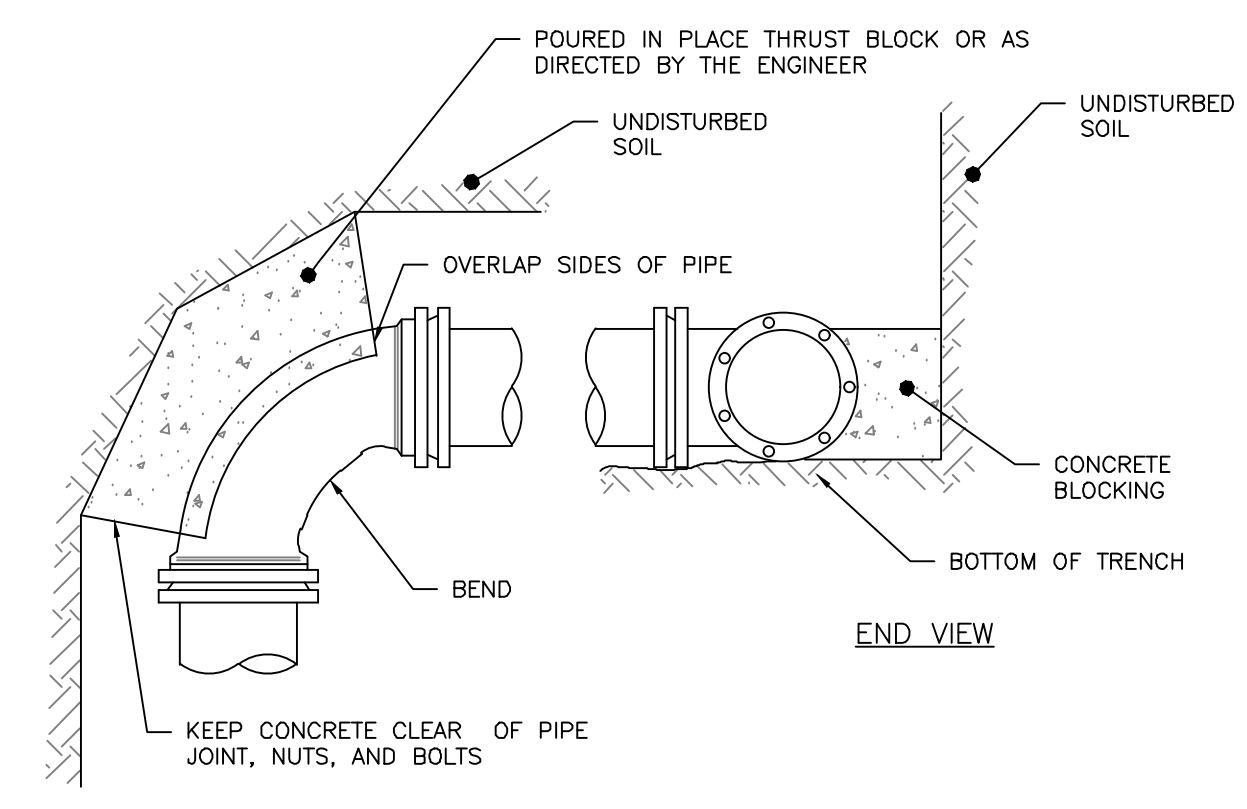
4'-0" DIAMETER PRECAST OIL AND WATER SEPARATOR
 NOT TO SCALE

- NOTES:
1. THE WATER TRENCH SHALL BE CONSTRUCTED IN ACCORDANCE WITH THE PORTLAND WATER DISTRICT STANDARD DETAILS & SPECIFICATIONS.
 2. IF LESS THAN 5'-6" OF COVER IS POSSIBLE ADD 1 INCH OF "BLUE DOW" RIGID INSULATION FOR EVERY 12" LESS COVER.



WATER SERVICE TRENCH SECTION DETAIL
 NOT TO SCALE

- NOTES:
1. IF DEAD END WITH TEE, THRUST BLOCK WOULD BE REQUIRED OR AS DIRECTED BY THE ENGINEER
 2. SEE THRUST/RETAINER GLAND SCHEDULE FOR TYPE OF BLOCKING TO BE USED ON BENDS



THRUST BLOCKING: REGULAR BEND
 NOT TO SCALE



CITY OF PORTLAND
APPROVED SITE PLAN
 Subject to Conditions of Approval and Standard Conditions

BUILDING PERMIT
 ISSUED FOR CONSTRUCTION

DATE OF APPROVAL **3-22-2016**
 PLANNER **Jean Fraser**
 PROJECT NO. **#2016-005**