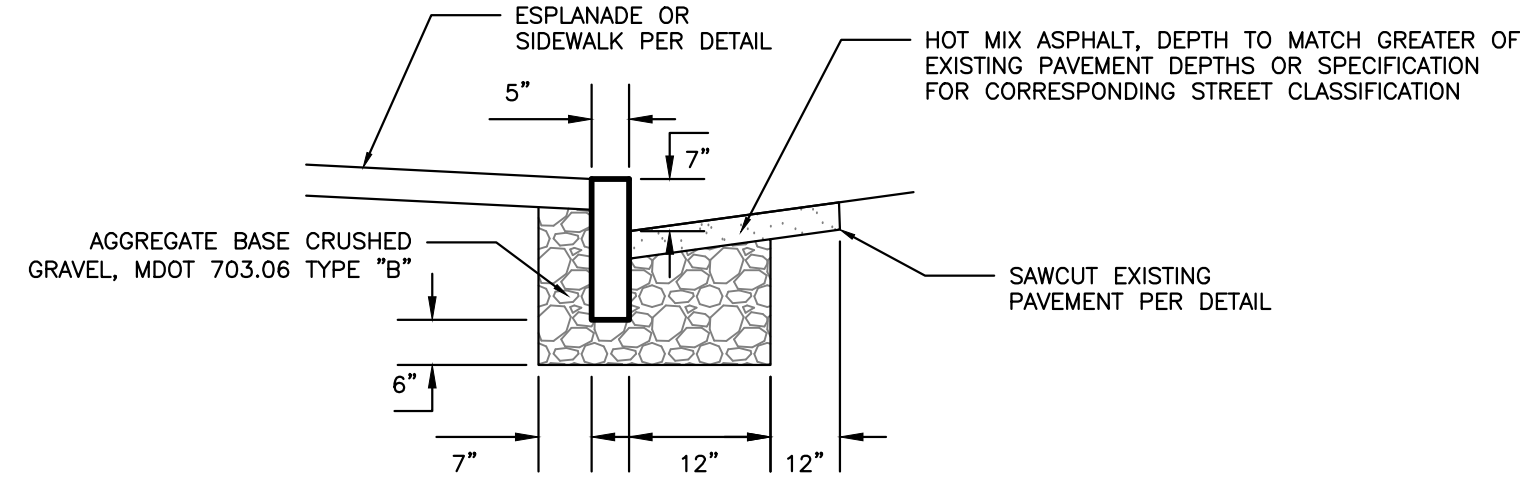


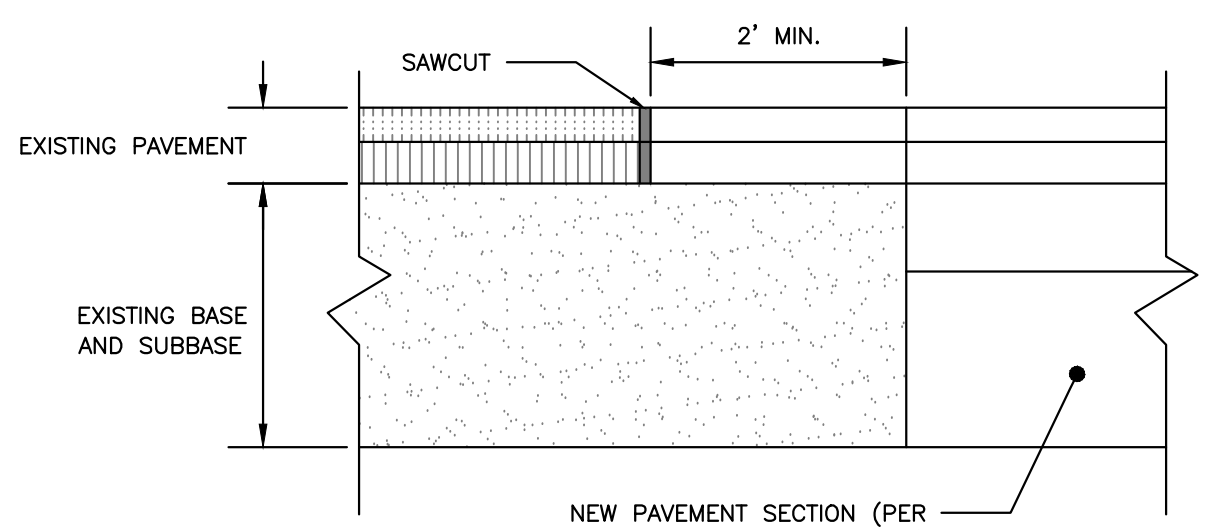
CURB TIPDOWN PROFILE



VERTICAL GRANITE CURB CROSS SECTION

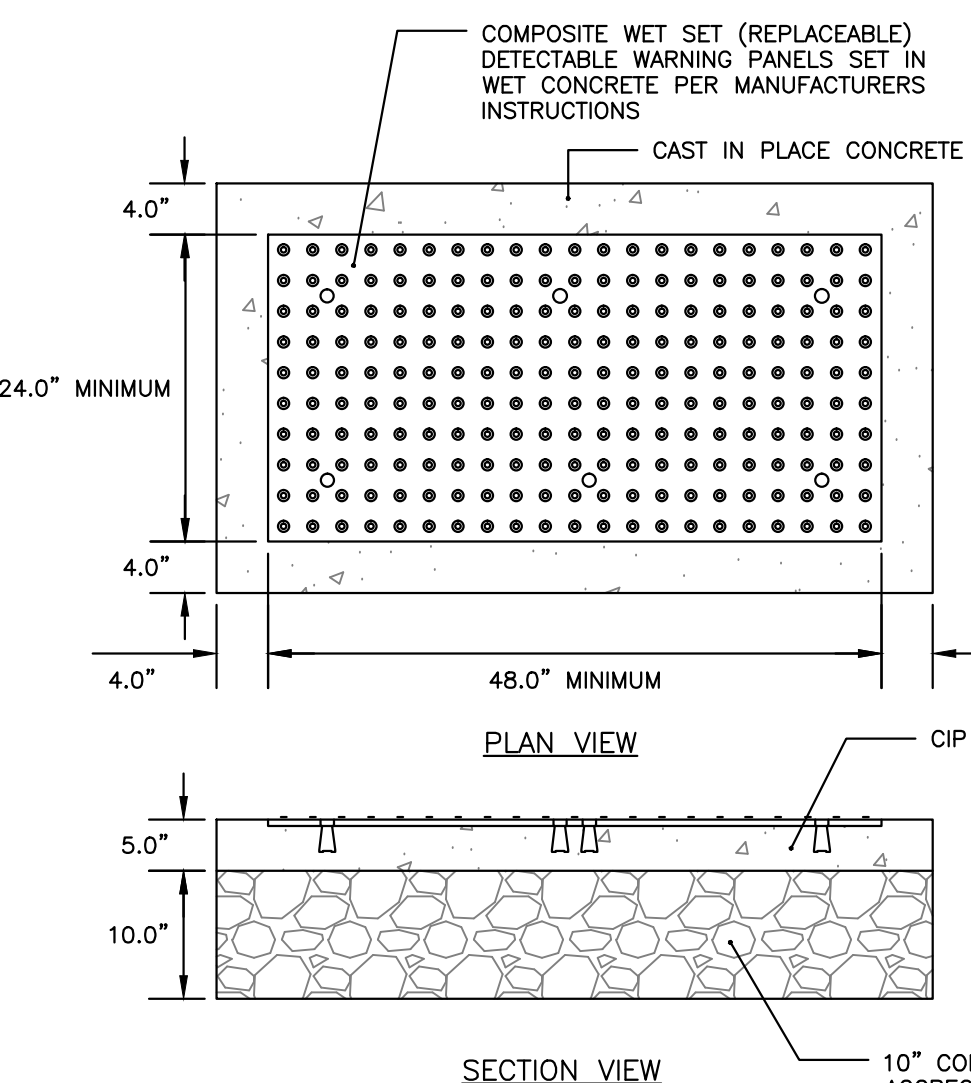
VERTICAL GRANITE CURB AND TIPDOWN INSTALLATION
NOT TO SCALE

- NOTES:
1. SAWCUT EXISTING PAVEMENT AND REMOVE 2" STRIP OF EXISTING PAVEMENT. APPLY BITUMINOUS TACK COAT PRIOR TO PLACEMENT OF NEW BITUMINOUS PAVEMENT.
 2. THE NEW PAVEMENT SECTION SHALL MEET THE CITY OF PORTLAND ARTERIAL BITUMINOUS PAVEMENT SECTION DETAIL AT A MINIMUM OR THE EXISTING PAVEMENT AND AGGREGATE BASE AND SUBBASE DEPTH WHICHEVER IS GREATER.

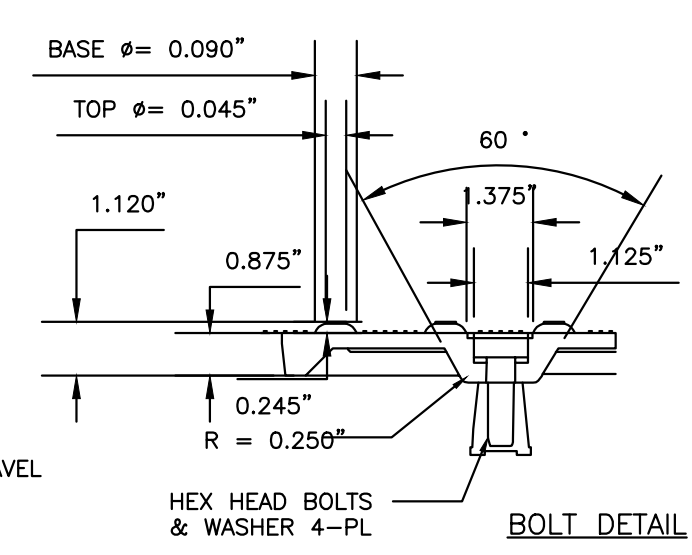


PAVEMENT SAWCUT DETAIL
NOT TO SCALE

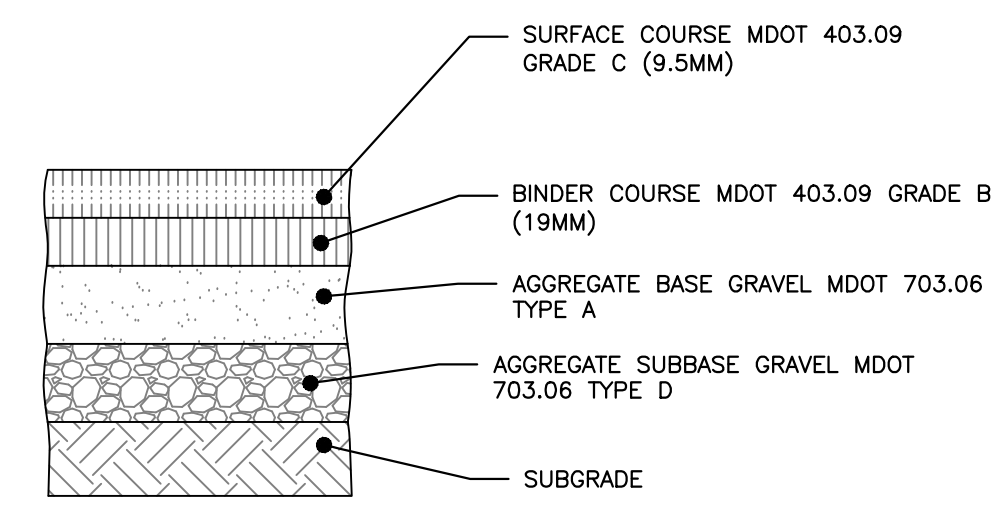
- NOTES:
1. COMPOSITE WET SET (REPLACEABLE) DETECTABLE WARNING PANELS SHALL BE AS MANUFACTURED BY ADA SOLUTIONS, INC. (WWW.ADATILE.COM) OR APPROVED EQUAL.
 2. CAST IN PLACE CONCRETE SHALL MEET SPECIFICATIONS FOR MAINE D.O.T. CLASS A STRUCTURAL CONCRETE, MINIMUM COMPRESSIVE STRENGTH 4,000 PSI. THE CONCRETE SHALL BE SEALED PRIOR TO SETTING PANELS. THE EXPOSED CONCRETE BORDER SHALL RECEIVE A GROOVED EDGE BETWEEN THE PANEL AND CONCRETE, ALONG WITH A UNIFORM BROOM FINISH PERPENDICULAR TO THE FLOW OF PEDESTRIAN TRAFFIC.
 3. TRUNCATED DOMES SHALL BE ALIGNED IN ROWS, PARALLEL AND PERPENDICULAR TO THE PREDOMINANT DIRECTION OF TRAVEL. TRUNCATED DOME BRICKS AND GRANITE PAVERS ARE NOT ALLOWED.
 4. FOR ALL DETECTABLE WARNING PANELS (EXCEPT AS SPECIFIED IN TECHNICAL MANUAL 1.8.4.), FEDERAL DARK GRAY COLORED (#36118) PANEL(S) SHALL BE USED. FOLLOW MANUFACTURER'S INSTRUCTIONS FOR INSTALLATION.
 5. SIZE: THE DETECTABLE WARNING PANEL(S) SHALL EXTEND 24 INCHES MINIMUM IN THE DIRECTION OF TRAVEL AND THE FULL WIDTH OF THE CURB RAMP, LANDING, OR BLENDED TRANSITION TO THE STREET.
 6. ORIENTATION: THE DETECTABLE WARNING PANEL SHALL BE LOCATED SO THAT THE EDGE NEAREST TO THE CURB LINE IS 6 INCHES MINIMUM AND 8 INCHES MAXIMUM FROM THE CURB LINE. THE PANEL SHALL BE ORIENTED TO THE DIRECTION OF TRAVEL AS IDENTIFIED BY THE POINT OF EGRESS.



SIDEWALK RAMP DETECTABLE WARNING PANEL
NOT TO SCALE



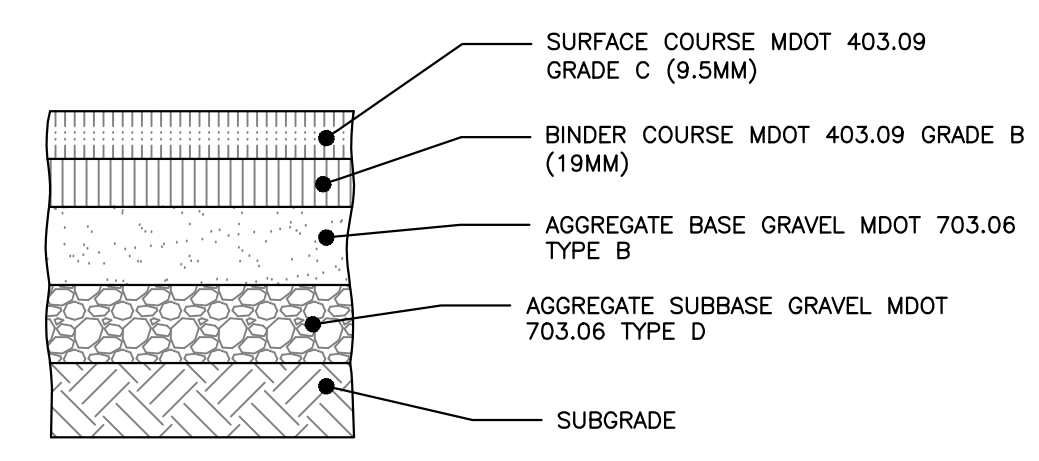
BOLT DETAIL



- NOTES:
1. COMPACT SUBGRADE TO 95% MAXIMUM DRY DENSITY IN ACCORDANCE WITH ASTM D-1557.
 2. ARTERIAL BITUMINOUS PAVEMENT PROFILE APPLIES ONLY WITHIN FORE STREET R.O.W.

THICKNESS OF LAYERS	
STANDARD	LAYERS
2"	SURFACE COURSE MDOT 403.09 GRADE C (12.5mm)
3"	BINDER COURSE MDOT 403.09 GRADE B (19mm)
6"	AGGREGATE BASE GRAVEL MDOT 703.06 TYPE B
18"	AGGREGATE SUBBASE GRAVEL MDOT 703.06 TYPE D

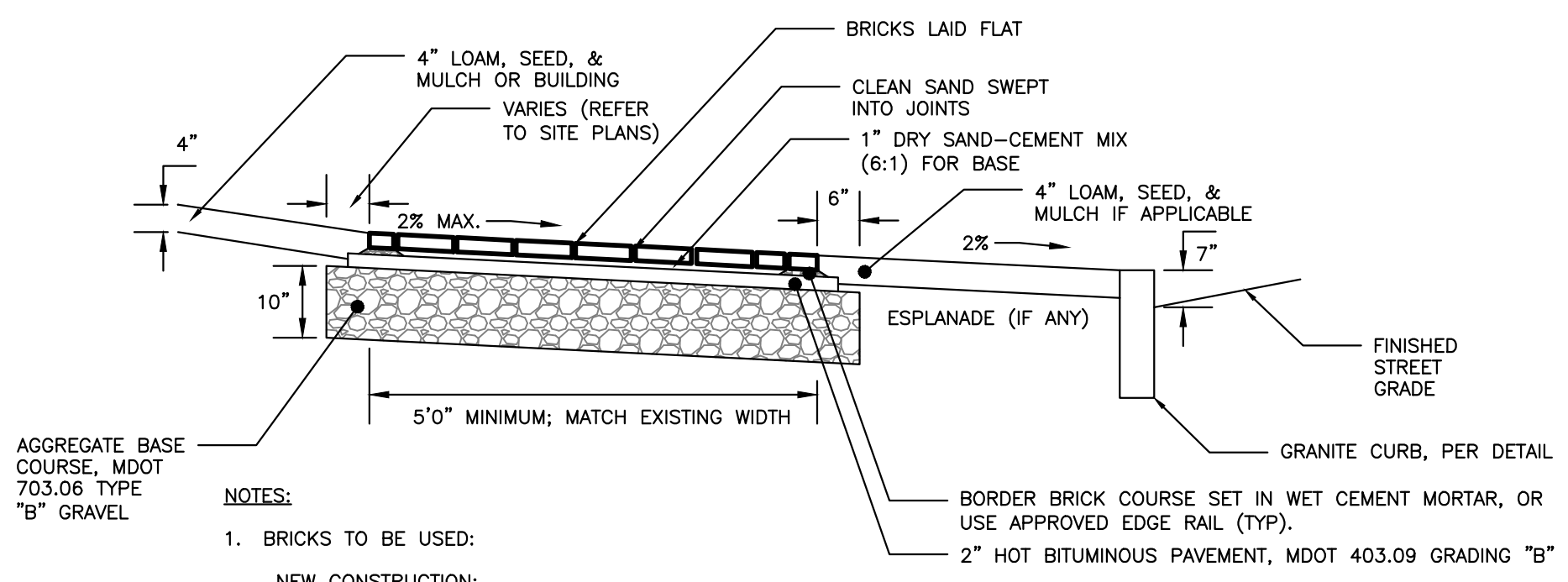
CITY OF PORTLAND ARTERIAL BITUMINOUS PAVEMENT PROFILE
NOT TO SCALE



- NOTES:
1. COMPACT SUBGRADE TO 95% MAXIMUM DRY DENSITY IN ACCORDANCE WITH ASTM D-1557
 2. LOCAL BITUMINOUS PAVEMENT PROFILE APPLIES TO THE SITE DRIVEWAY & WATERVILLE STREET

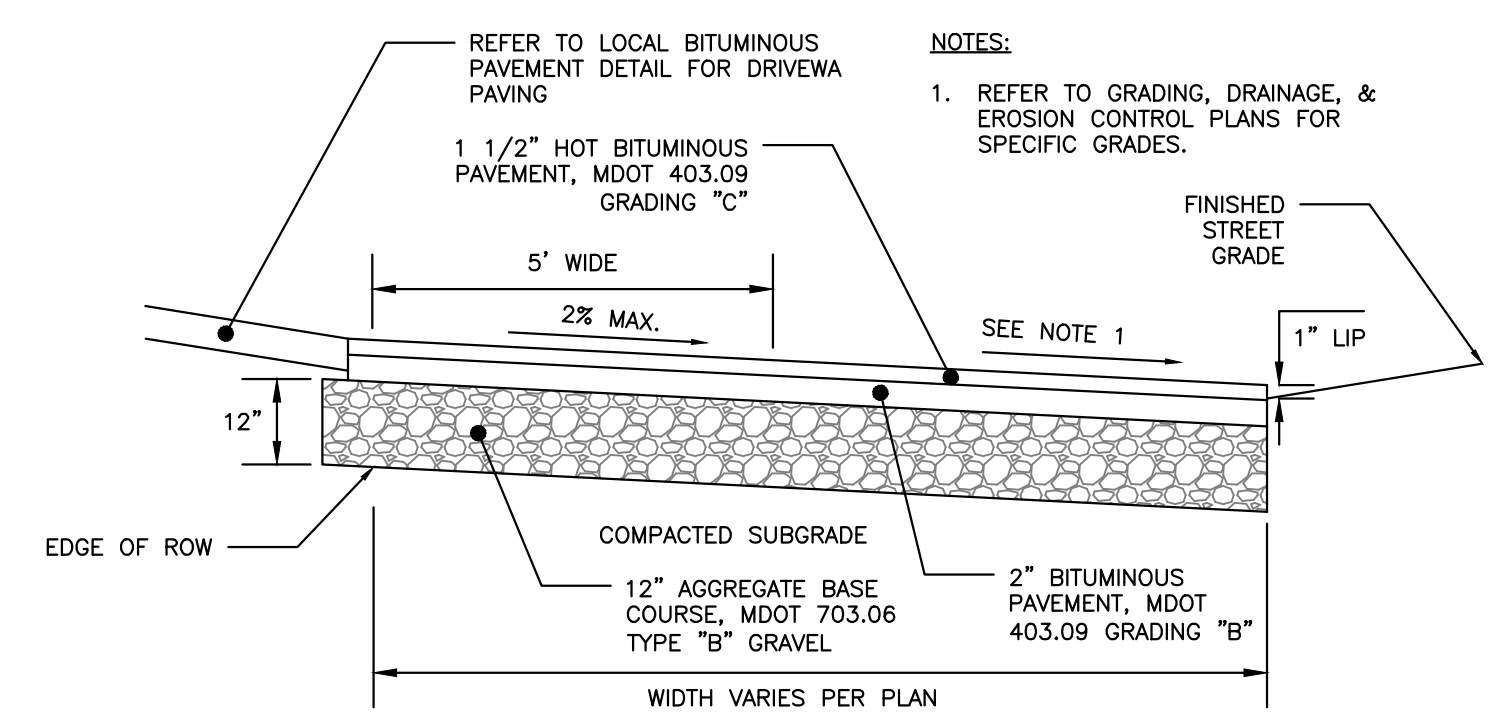
THICKNESS OF LAYERS	
STANDARD	LAYERS
1-1/2"	SURFACE COURSE MDOT 403.09 GRADE C (9.5mm)
2"	BINDER COURSE MDOT 403.09 GRADE B (19mm)
3"	AGGREGATE BASE GRAVEL MDOT 703.06 TYPE B
15"	AGGREGATE SUBBASE GRAVEL MDOT 703.06 TYPE D

LOCAL BITUMINOUS PAVEMENT PROFILE
NOT TO SCALE

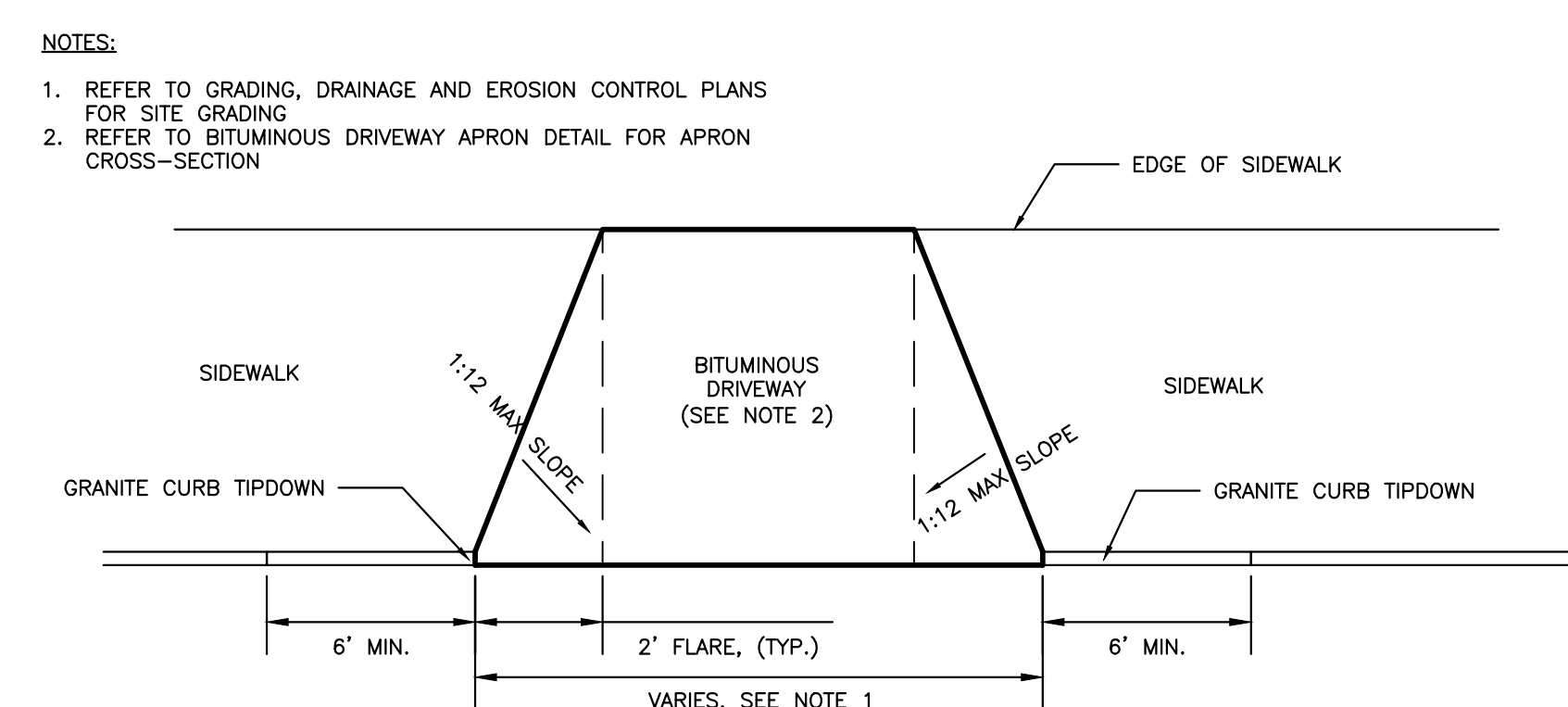


- NOTES:
1. BRICKS TO BE USED:
NEW CONSTRUCTION:
4"x8" PINE HALL PATHWAY PAVEMENT BRICK; MFG. BY PINE HALL BRICK CO., MADISON, NORTH CAROLINA. LACHANCE ITEM #193623; PINE HALL PATHWAY PAVEMENT BRICK.
 2. INSTALL BRICK FLUSH UP TO BUILDING, PAVEMENT, STAIRS, CONCRETE SURFACES, CURB OR LANDSCAPED AREAS.

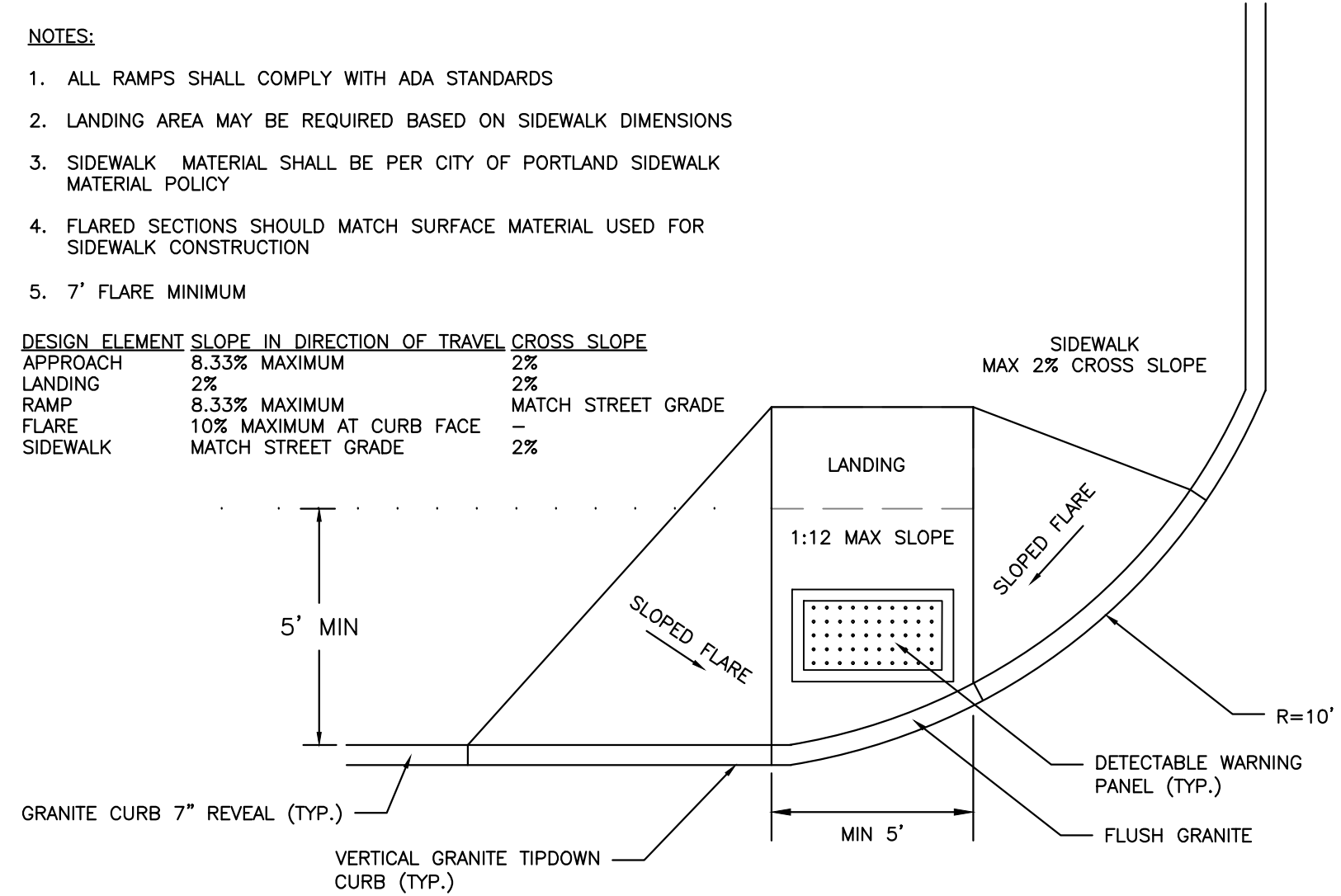
BRICK SIDEWALK WITH BITUMINOUS BASE DETAIL
NOT TO SCALE



BITUMINOUS DRIVEWAY APRON DETAIL
NOT TO SCALE



DRIVEWAY APRON LAYOUT DETAIL
NOT TO SCALE



SIDEWALK RAMP
NOT TO SCALE

ISSUED FOR PERMITTING
NOT FOR CONSTRUCTION

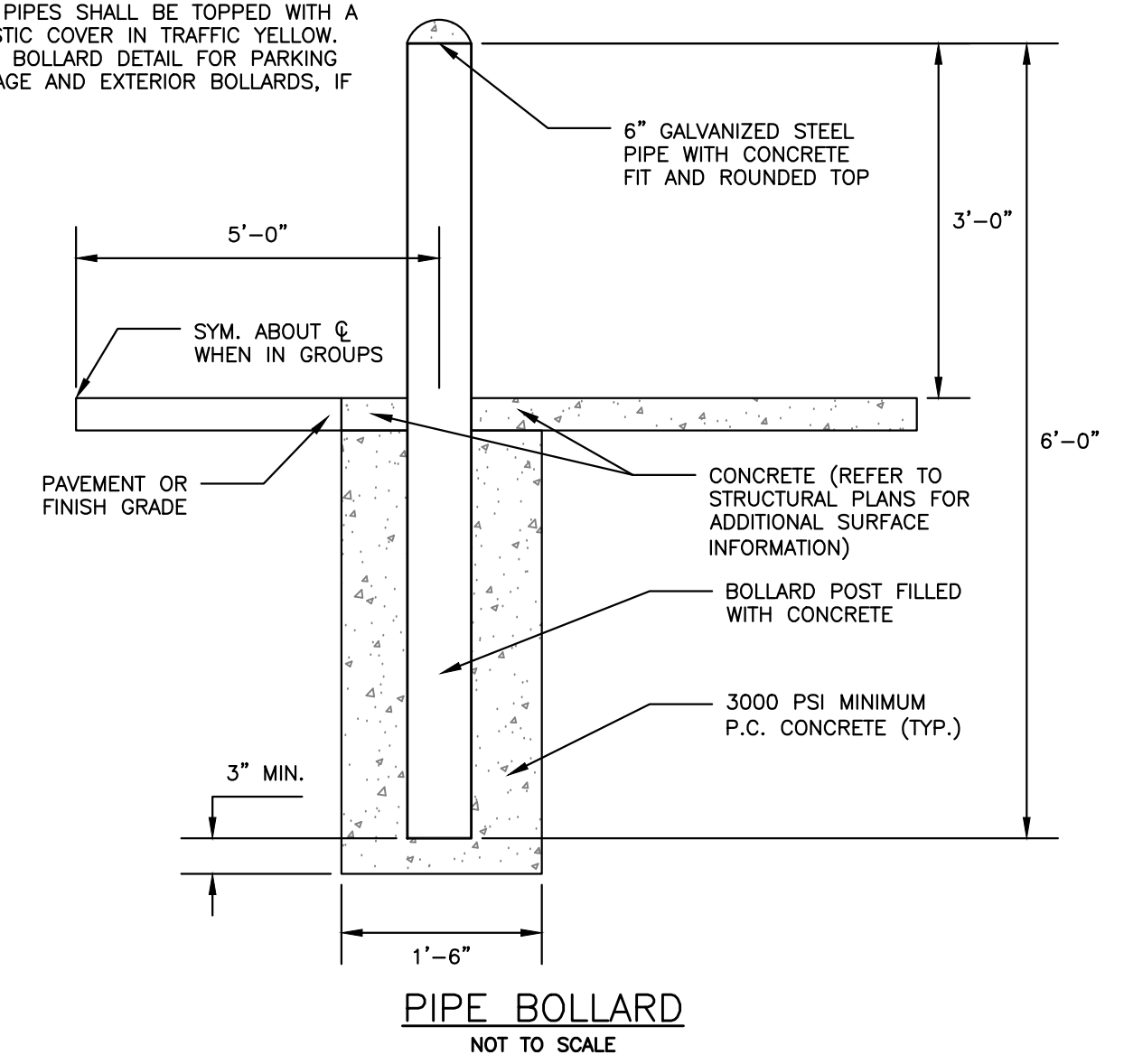
ISSUED FOR	BY
PRELIM. APPLICATION	DATE
	1/25/18
REVISION	REV.
	DATE
DRAWING NO. C-40	
SITE DETAILS 1	
PROJECT NAME: 31 FORE STREET REDEVELOPMENT	
CLIENT: PENINSULA PROPERTY DEVELOPMENT, LLC.	
59 MOODY STREET, PORTLAND MAINE 04101	
DRAWING NAME: ACCORN ENGINEERING, INC.	
158 DANFORTH (207) 779-2655	
FILE:	1068_DETAILS
DATE:	12/28/15
JN:	1068
SCALE:	NTS
DESIGNED BY:	WHS
DRAWN BY:	WHS
CHECKED BY:	WHS

- PLANTING NOTES
- ALL PLANT SELECTION AND INSTALLATION WILL BE IN COMPLIANCE WITH THE CITY OF PORTLAND TECHNICAL MANUAL (SECTION 4).
 - NO PLANTING WILL BE INSTALLED UNTIL ALL GRADING AND CONSTRUCTION HAS BEEN COMPLETED IN IMMEDIATE AREA.
 - CONTRACTOR TO VERIFY ALL UTILITIES ON PROPERTY AND TO PROTECT ALL UTILITIES DURING EXCAVATION FOR PLANTS.
 - IF THERE IS A DISCREPANCY BETWEEN THE NUMBER OF PLANTS SHOWN ON THE PLAN AND THE NUMBER OF PLANTS SHOWN IN PLANT LIST (IF ANY), THE NUMBER OF PLANTS SHOWN ON PLAN WILL TAKE PRECEDENCE.
 - ALL CONTAINER MATERIAL TO BE GROWN IN CONTAINER A MINIMUM OF 6 MONTHS.
 - ALL MATERIAL SHALL COMPLY WITH THE LATEST EDITION OF THE AMERICAN STANDARD FOR NURSERY STOCK, AMERICAN ASSOCIATION OF NURSERYMAN.
 - CONTRACTOR SHALL REPAIR ALL DAMAGE TO PROPERTY FROM PLANTING OPERATIONS AT NO COST TO THE OWNER.
 - CONTRACTOR SHALL GUARANTEE NEW PLANT MATERIAL THROUGH ONE CALENDAR YEAR FROM TIME OF PROVISIONAL ACCEPTANCE.
 - THE ENGINEER MAY TAG ALL PLANTS AT THE NURSERY AND INSPECT THEM AFTER DELIVERY TO THE SITE. ALL PLANT MATERIALS SHALL BE INSPECTED BY THE ENGINEER ON SITE PRIOR TO INSTALLATION.
 - ALL PROPOSED PLANTS SHALL BE LOCATED CAREFULLY AS SHOWN ON THE PLANS AND THE PLACEMENTS SHALL BE APPROVED BY ENGINEER BEFORE THE PLANTS ARE INSTALLED.
 - ALL DISTURBED AREAS NOT TO BE PAVED OR PLANTED SHALL BE LOAMED AND SEEDED AS SHOWN. THE SEED MIX SPECIFICATIONS ARE AS FOLLOWS: LESCO FINE FESCUE LINKS BLEND OF 35% HARD FESCUE, 35% CREEPING RED FESCUE, 20% CHEWINGS FESCUE AND 10% SHEEP FESCUE. ADD 5% LITTLE BLUESTEM

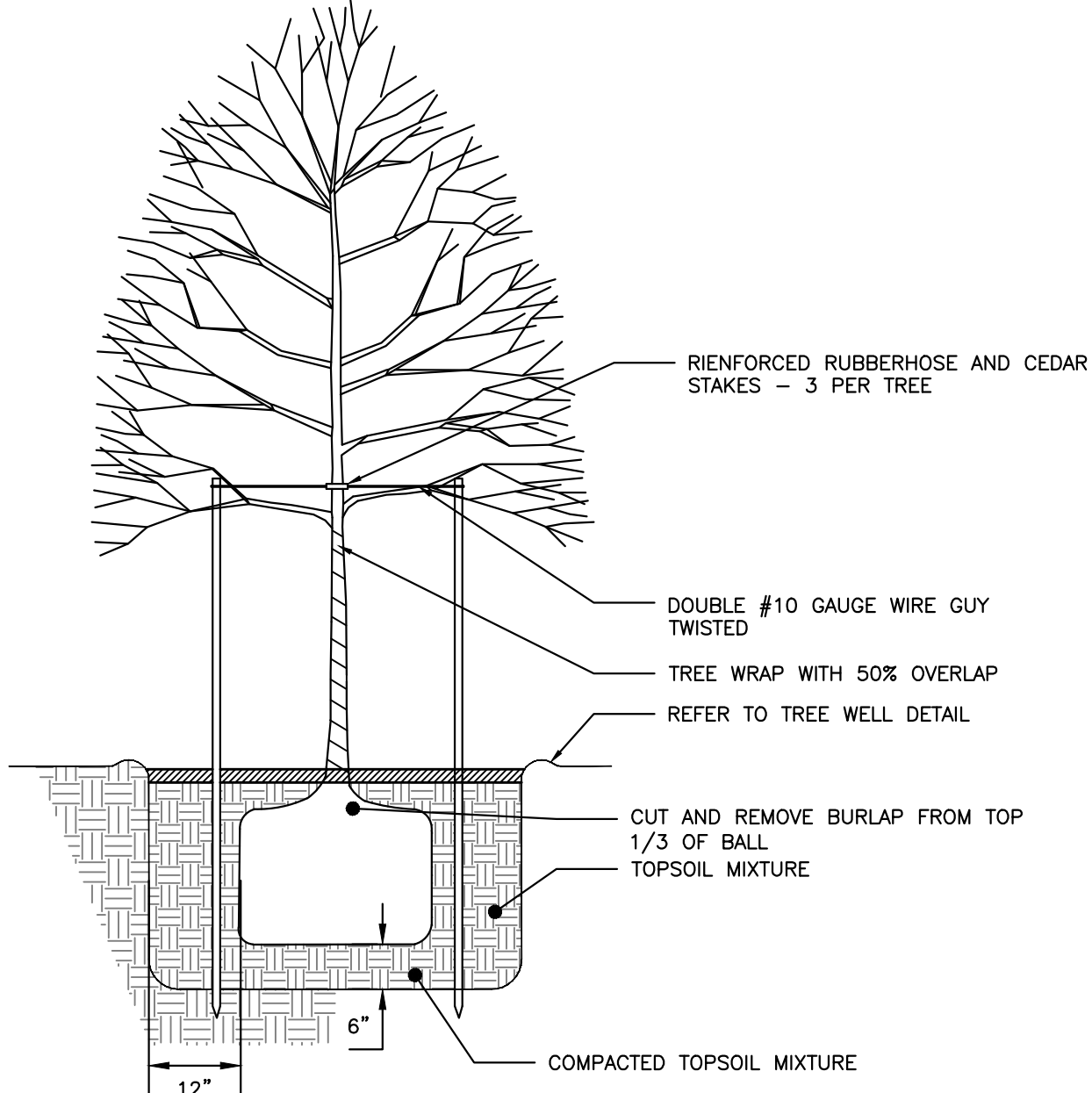
- AND 5% NORTHEAST WILDFLOWER SEED MIXTURE BY WEIGHT TO THE LINKS BLEND.
- STAKING AND GUYING SHALL BE DETERMINED BY THE ENGINEER ON A TREE BY TREE BASIS. FOR PRICING PURPOSES, PROVIDE A PER TREE UNIT COST FOR STAKING AND GUYING. IF STAKING AND GUYING IS REQUIRED, REMOVE TREE WRAP, STAKES, AND GUY WIRES AT END OF FIRST GROWING SEASON.
 - FOR TREE PLANTING IN LAWN AREAS, ANY DISTURBED LAWN SHALL BE LOAMED AND SEEDED AS NECESSARY.
 - ENGINEER TO FLAG TREES TO BE PROTECTED ON SITE.
 - DIG HOLE AT LEAST 2 TIMES THE DIA. OF THE ROOT BALL AND AS DEEP AS THE ROOT BALL (NO DEEPER). SET ROOT BALL CENTERED, WITH THE TOP AT GROUND LEVEL CORRECT HOLE DEPTH AS REQUIRED.
 - TOPSOIL BACKFILL SHALL BE NATURAL FRIABLE, FERTILE, FINE LOAMY SOIL POSSESSING THE CHARACTERISTICS OF TOPSOILS IN THE VICINITY WHICH PRODUCE A HEAVY GROWTH. TOPSOIL SHALL CONTAIN NOT LESS THAN 6% NOR MORE THAN 20% ORGANIC MATTER. TOP SOIL SHALL HAVE A pH VALUE OF NOT LESS THAN 5.5 NOR MORE THAN 7.0.
 - CONTAINER GROWN STOCK REMOVE CONTAINER PROTECTING THE ROOT BALL. GENTLY COMB OUT THE ROOTS. PRUNE DAMAGED ROOTS.
 - BACKFILL THE HOLE WITH TOPSOIL TO A DEPTH NOT TO EXCEED 8" THEN WATER SUFFICIENTLY TO SETTLE TOPSOIL. REPEAT SOIL BACKFILL, WATER, DRAIN. TOPSOIL SHALL BE TAMPED UNDER EDGES OF THE BALLED PLANTS. BACKFILL TO FINISH GRADE AND CREATE AN EARTHEN SAUCER. SOAK PLANTS WITH WATER TWICE WITHIN THE FIRST TWENTY-FOUR HOURS OF PLANTING.

NOTES:

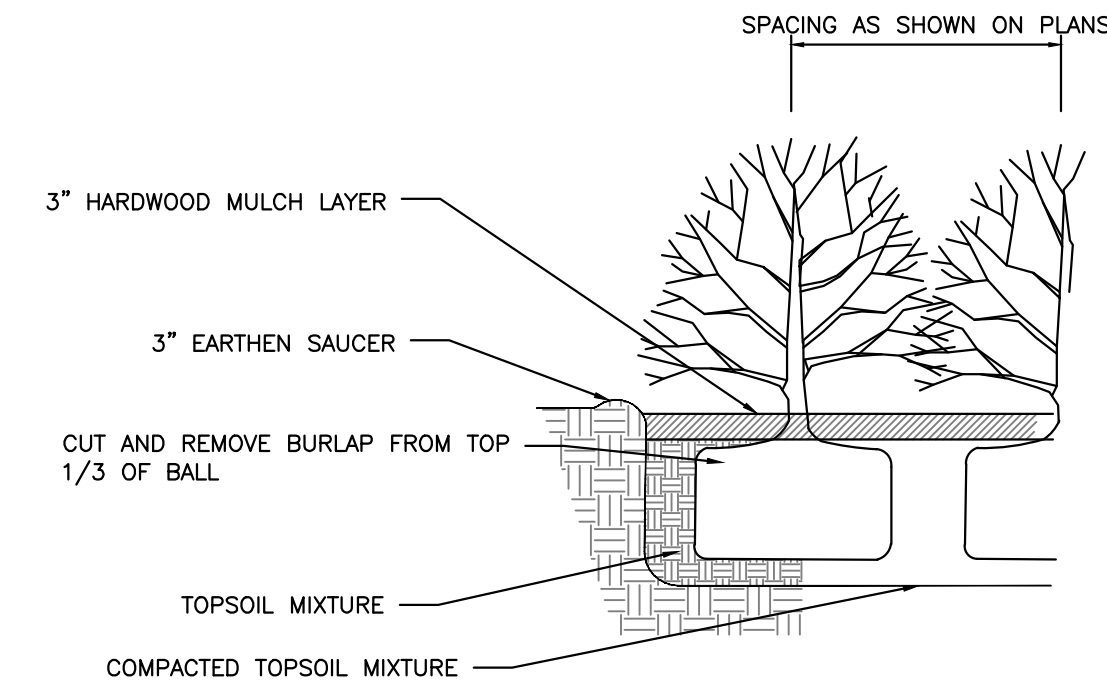
- ALL PIPES SHALL BE TOPPED WITH A PLASTIC COVER IN TRAFFIC YELLOW.
- PIPE BOLLARD DETAIL FOR PARKING GARAGE AND EXTERIOR BOLLARDS, IF ANY.



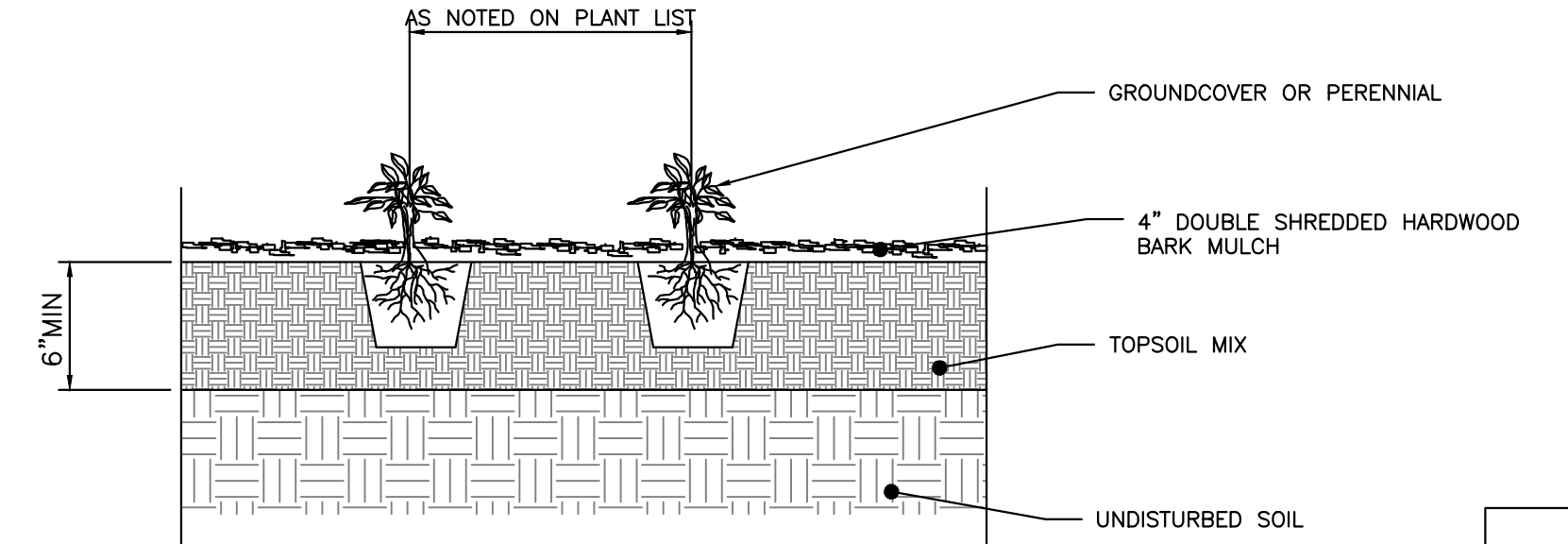
PIPE BOLLARD
NOT TO SCALE



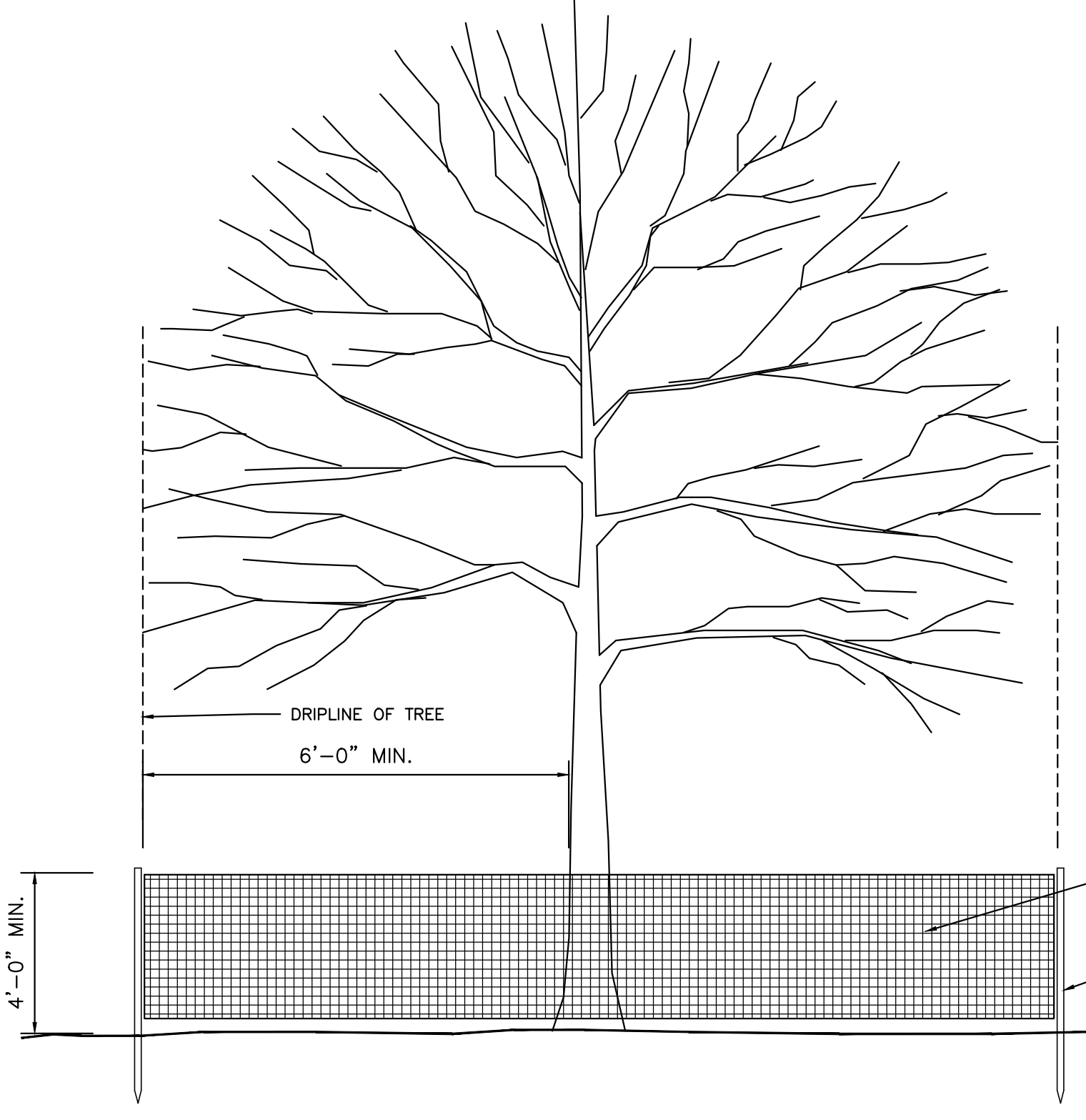
TREE PLANTING DETAIL
NOT TO SCALE



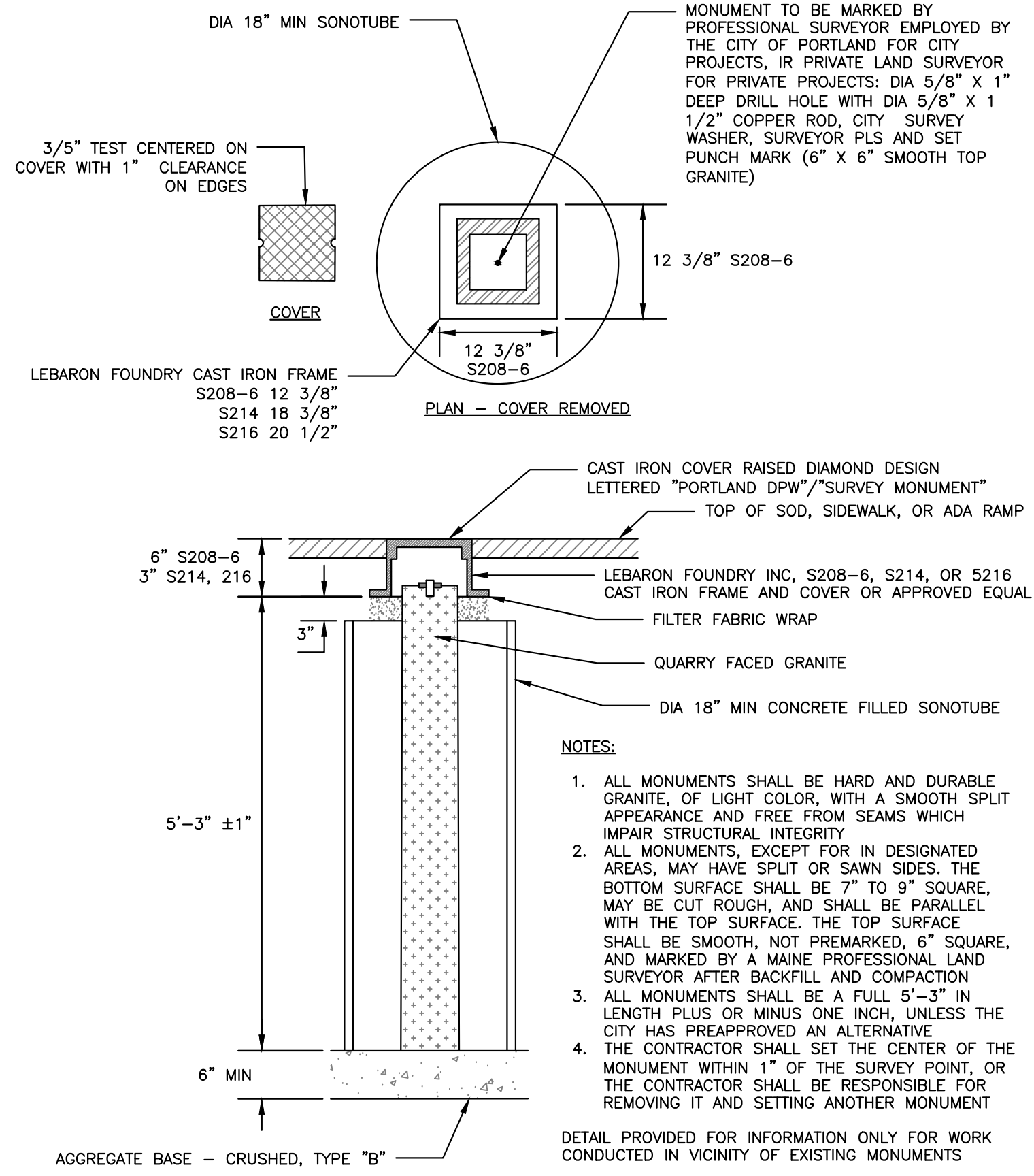
SHRUB PLANTING DETAIL
NOT TO SCALE



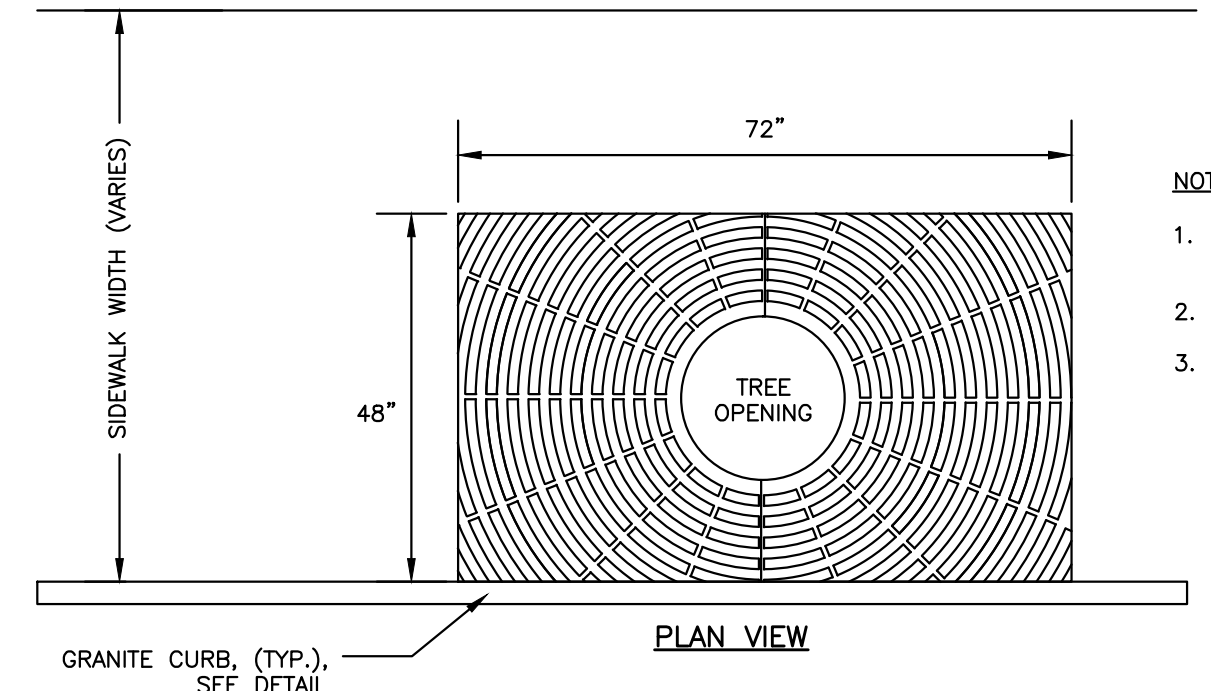
PERENNIAL PLANTING DETAIL
NOT TO SCALE



TREE PROTECTION DETAIL
NOT TO SCALE



GRANITE STREET MONUMENT
NOT TO SCALE



EXPANDABLE TREE GRATE NEENAH MODEL R-8811
NOT TO SCALE

- NOTES:
- 16" EXPANDABLE TREE OPENING; 3/5" SLOT OPENINGS.
 - SIDEWALK MATERIAL PER PLAN.
 - WHEN INSTALLED IN A BRICK SIDEWALK, GRATE REQUIRES A FRAME TO BE INSTALLED TO HOLD GRATE IN PLACE. CONTRACTOR TO INSTALL IN ACCORDANCE WITH MANUFACTURERS INSTALLATION PROCEDURES FOR PAVERS. CONTRACTOR TO SUBMIT INSTALLATION PROCEDURES FOR REVIEW FROM ENGINEER PRIOR TO CONSTRUCTION.

ISSUED FOR	BY
PRELIM. APPLICATION	WHS
	DATE
	1/25/18
REVISION	REV.
	DATE

DRAWING NAME: SITE DETAILS 2

PROJECT NAME: 31 FORE STREET REDEVELOPMENT

CLIENT: PENINSULA PROPERTY DEVELOPMENT, LLC.

59 MOODY STREET, PORTLAND MAINE 04101

ACORN ENGINEERING, INC. ENGINEERING, INC.

158 DANFORTH (207) 779-2655

FILE: 1068_DETAILS

DATE: 12/28/15

JN: 1068

SCALE: NTS

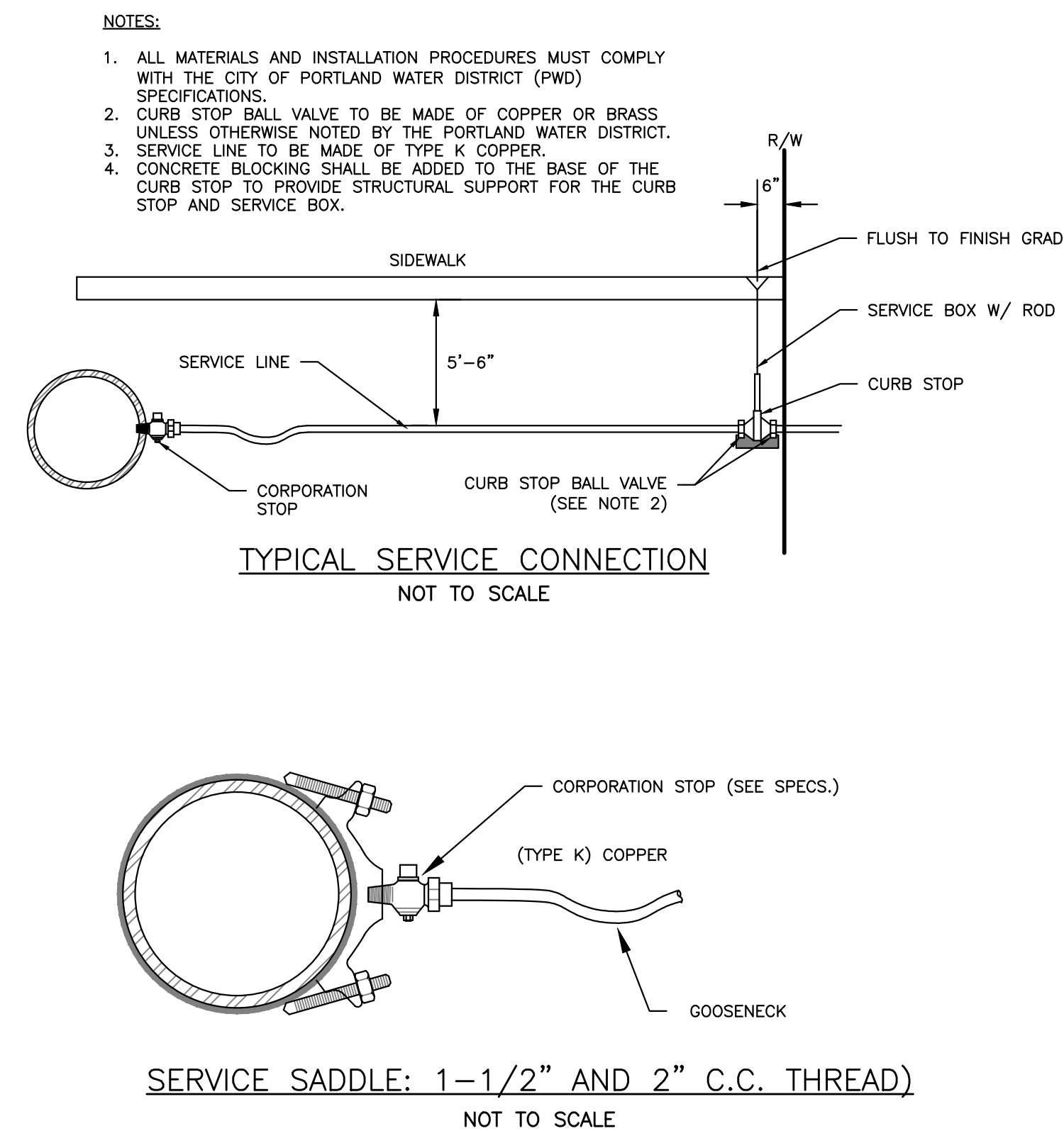
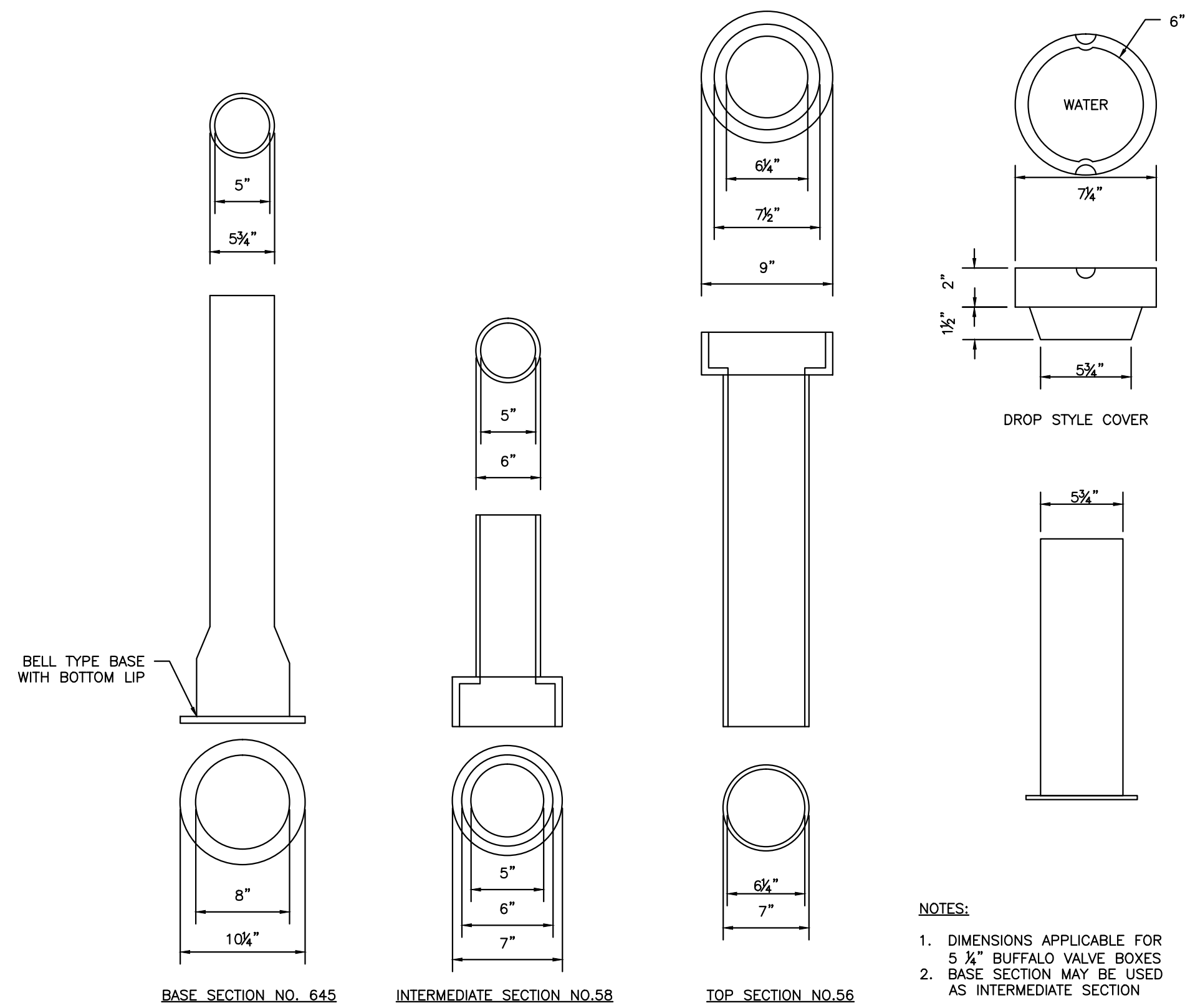
DESIGNED BY: WHS

DRAWN BY: WHS

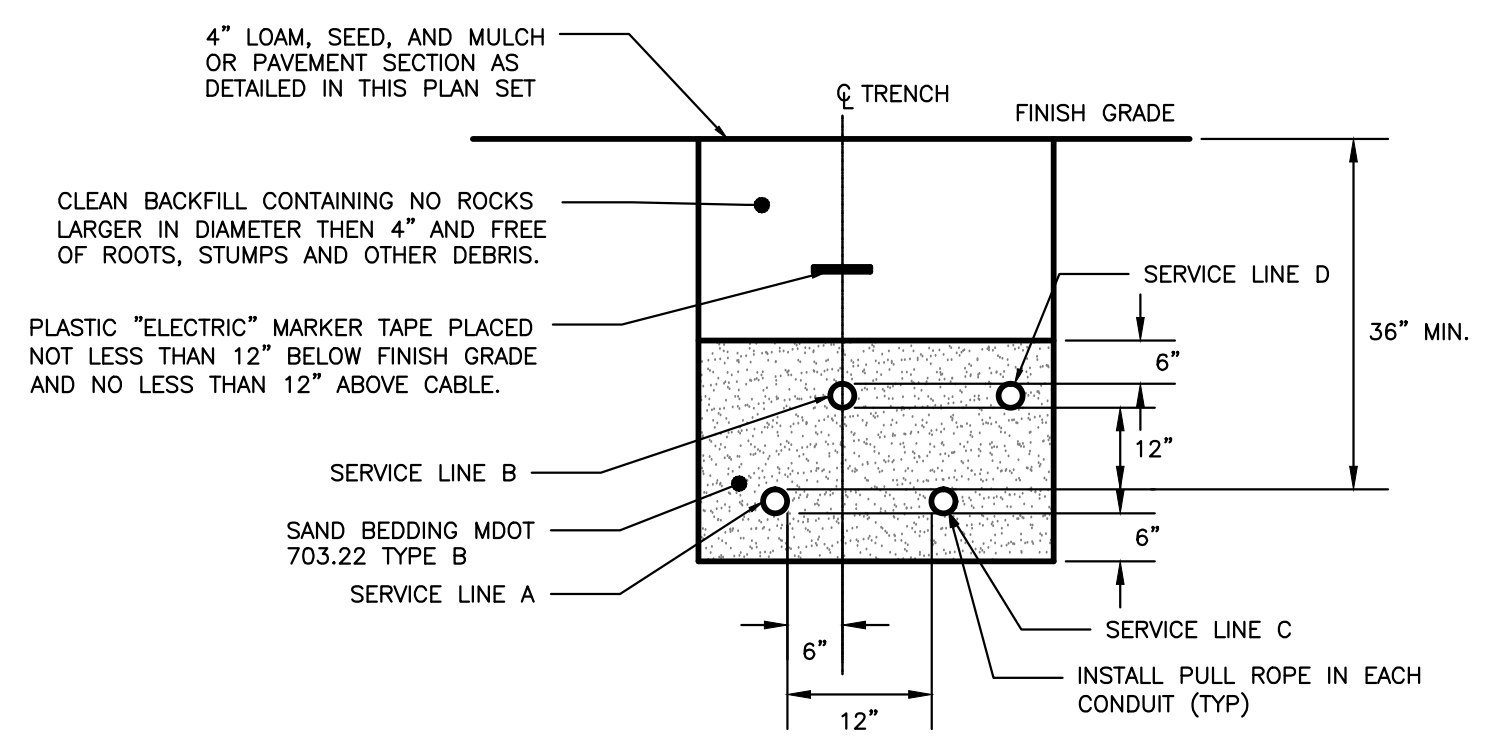
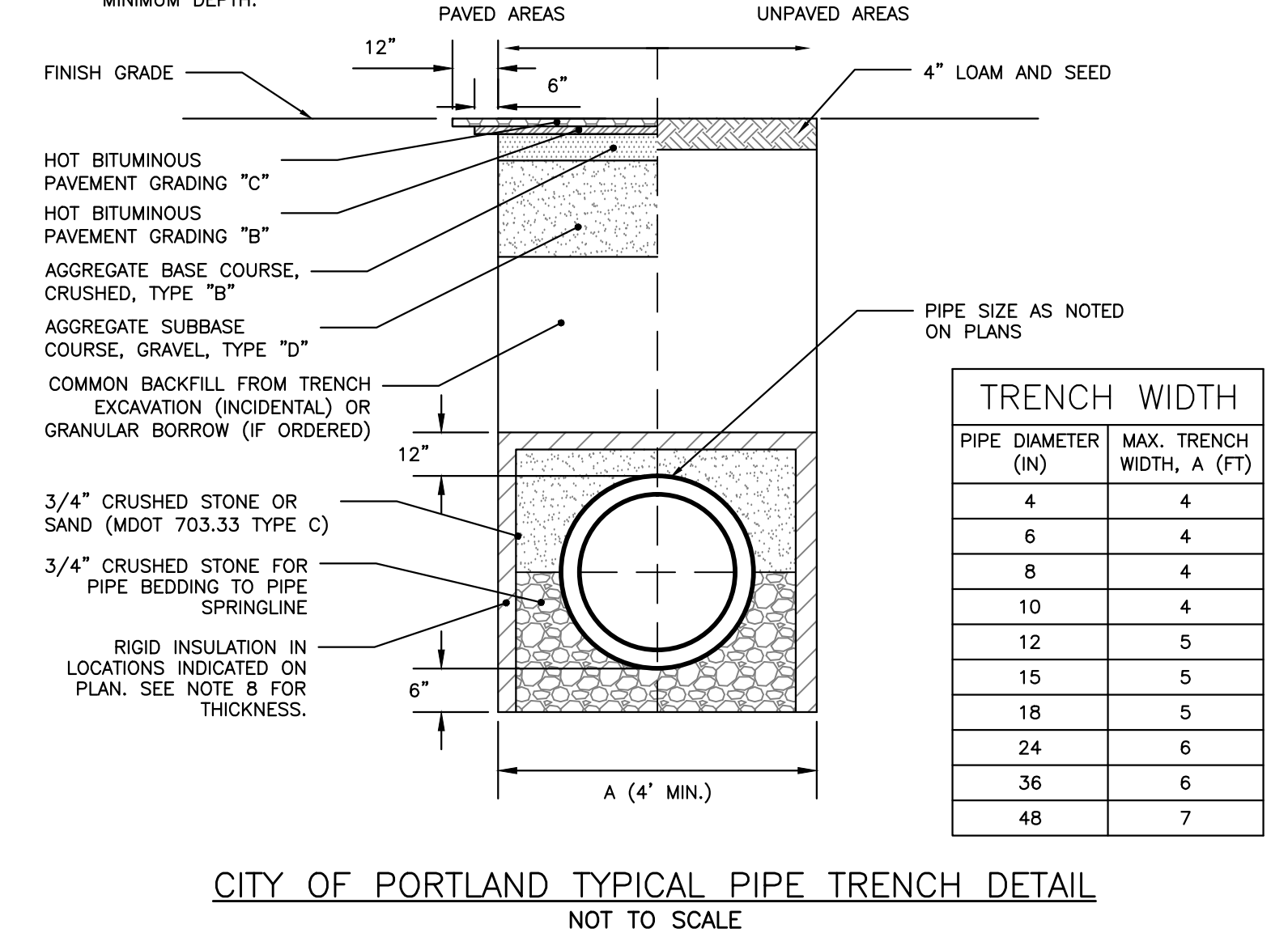
CHECKED BY: WHS

DRAWING NO. C-41

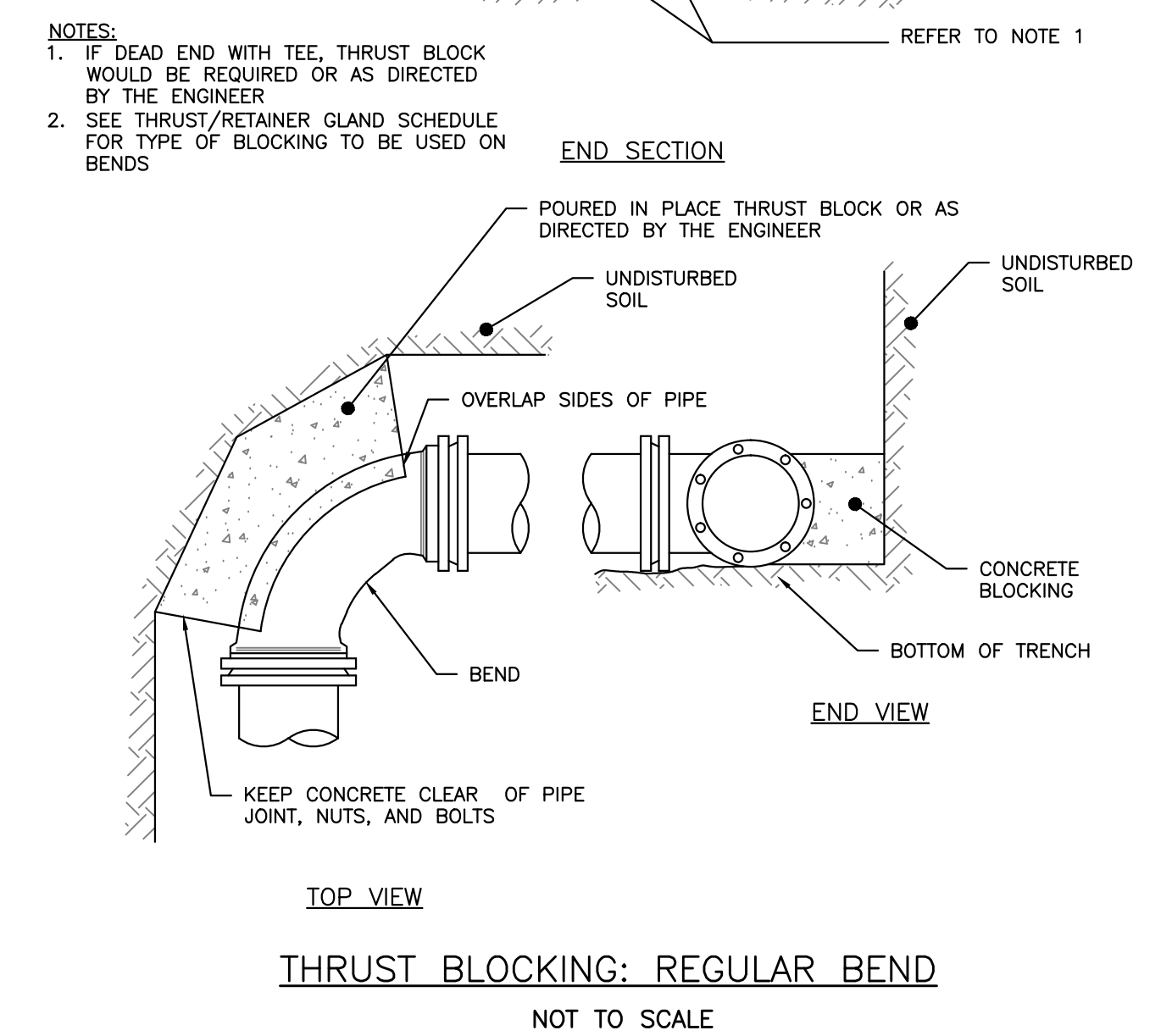
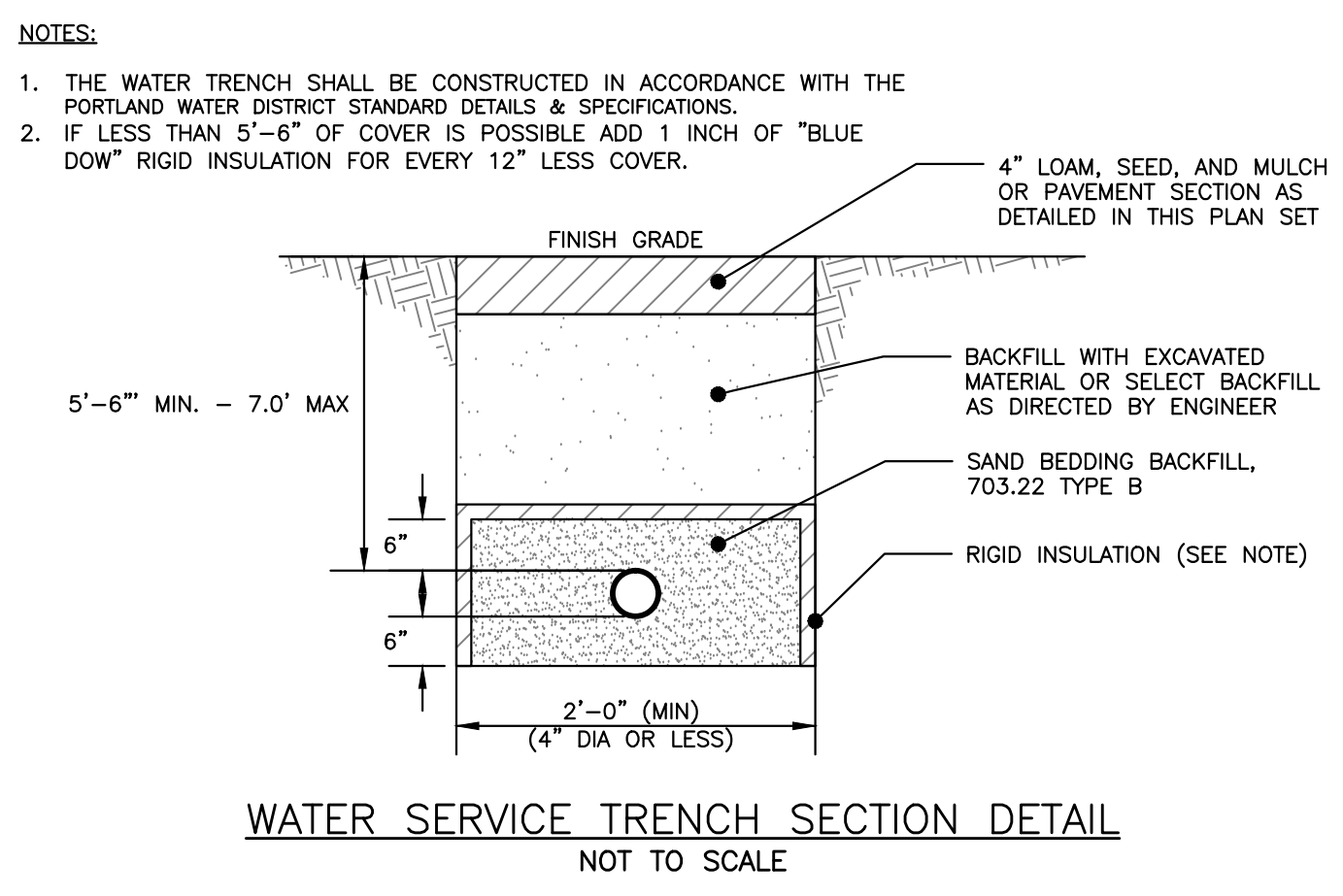
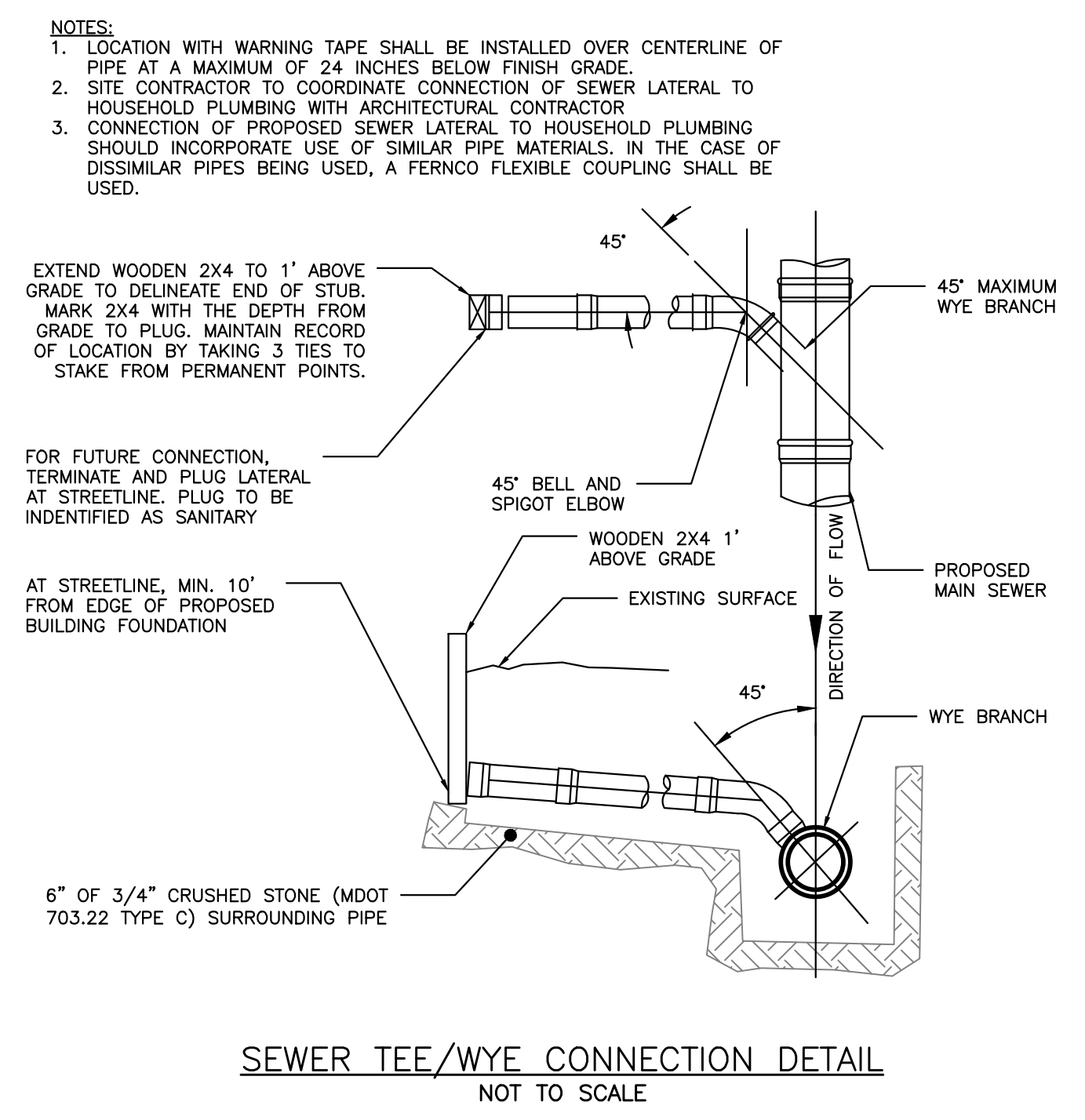
ISSUED FOR PERMITTING
NOT FOR CONSTRUCTION



- NOTES:**
- ANY ALTERNATE TRENCHING METHODS SHALL BE APPROVED IN ADVANCE BY THE CITY.
 - ALL CONSTRUCTION METHODS SHALL CONFORM TO THE CITY OF PORTLAND TECHNICAL STANDARDS FIGURE II-2.
 - BRACING & SHEETING OR OTHER TRENCH PROTECTION TO BE PROVIDED TO MEET APPLICABLE STATE AND O.S.H.A. SAFETY STANDARDS. ALL SUCH TRENCH PROTECTION SHALL BE THE RESPONSIBILITY OF THE CONTRACTOR.
 - WHERE APPLICABLE, PERFORATIONS IN STORM DRAIN (PERFSD) SHALL BE ORIENTED UP.
 - ALL STORM DRAINS SHALL BE PVC SDR 35 MIN PS-46 RATING OR IN ACCORDANCE WITH CITY OF PORTLAND TECHNICAL MANUAL - SECTION 2 - SANITARY SEWER AND STORM DRAIN - PART 2.5.2
 - IN PAVED AREAS, DEPTHS OF GRAVEL AND HOT MIX ASPHALT PAVEMENT SHALL MATCH THE GREATER OF EXISTING CONDITIONS OR THE REQUIREMENTS FOR THE CORRESPONDING STREET CLASSIFICATION.
 - THIS DETAIL SHALL BE APPLIED ONLY TO PIPE TRENCHES WITHIN OF THE CITY OF PORTLAND ROW STORM DRAIN COVER BETWEEN 2' AND 3' SHALL INCLUDE 4" OF RIGID INSULATION, COVER BETWEEN 3' AND 4' SHALL INCLUDE 2" RIGID INSULATION, OTHER UTILITIES: ADD 2" OF RIGID INSULATION FOR EACH FOOT ABOVE MINIMUM DEPTH.



CONDUIT TYPE				
SERVICE	CONDUIT SIZE	GRASS AND PAVED AREAS	UTILITY	REMARKS
A	2-5"	SCHEDULE 40 PVC ELECTRICAL GRADE	PRIMARY POWER	SEE NOTE 1
B	2-4"	SCHEDULE 40 PVC ELECTRICAL GRADE	COMMUNICATION	-
C	2-4"	SCHEDULE 40 PVC ELECTRICAL GRADE	SPARE	IF REQUIRED
D	2-4"	SCHEDULE 40 PVC ELECTRICAL GRADE	CABLE	-



ISSUED FOR PERMITTING NOT FOR CONSTRUCTION

BY DATE: WHS 12/28/15
PRELIM. APPLICATION: WHS 1/5/16

REVISION: REV. DATE

UTILITY DETAILS

PROJECT NAME: 31 FORE STREET REDEVELOPMENT

CLIENT: PENINSULA PROPERTY DEVELOPMENT, LLC.
59 MOODY STREET, PORTLAND MAINE 04101

DRAWING NAME: ACCORN ENGINEERING, INC.

PROJECT NUMBER: 1068_DETAILS

DATE: 12/28/15

JN: 1068

SCALE: NTS

DESIGNED BY: WHS

DRAWN BY: WHS

CHECKED BY: WHS

STATE OF MAINE
WILLIAM F. SAVAGE
No. 11419
1-5-16
LICENSED PROFESSIONAL ENGINEER

DRAWING NO. C-42

ISSUED FOR	BY
PRELIM. APPLICATION	WHS
	DATE
	1/25/18
REVISION	REV.
	DATE

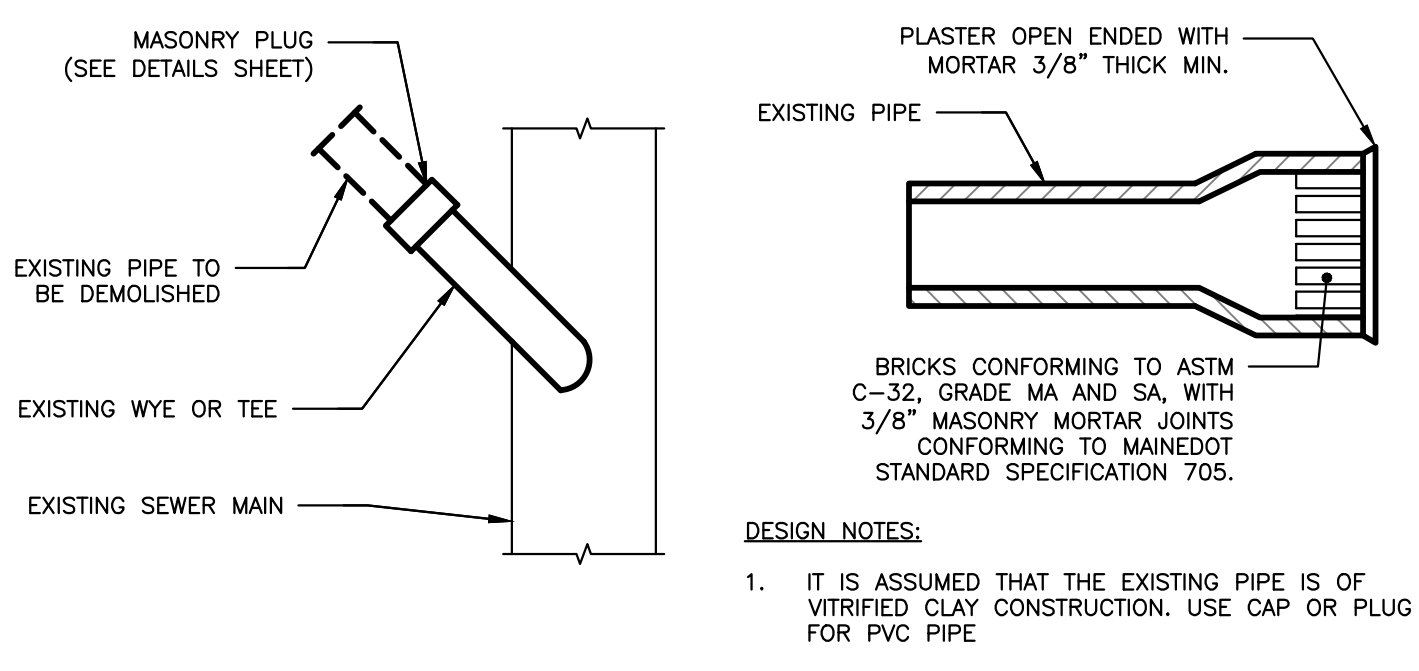
DRAWING NAME: **DRAINAGE DETAILS 1**
PROJECT NAME: **31 FORE STREET REDEVELOPMENT**
CLIENT: **PENINSULA PROPERTY DEVELOPMENT, LLC.**
59 MOODY STREET, PORTLAND MAINE 04101

ACORN ENGINEERING, INC. ENGINEERING, INC.
158 DANFORTH (207) 779-2665
STATE OF MAINE PROFESSIONAL ENGINEER
WILLIAM F. SAVAGE
No. 11419
1-5-16
LICENSED PROFESSIONAL ENGINEER

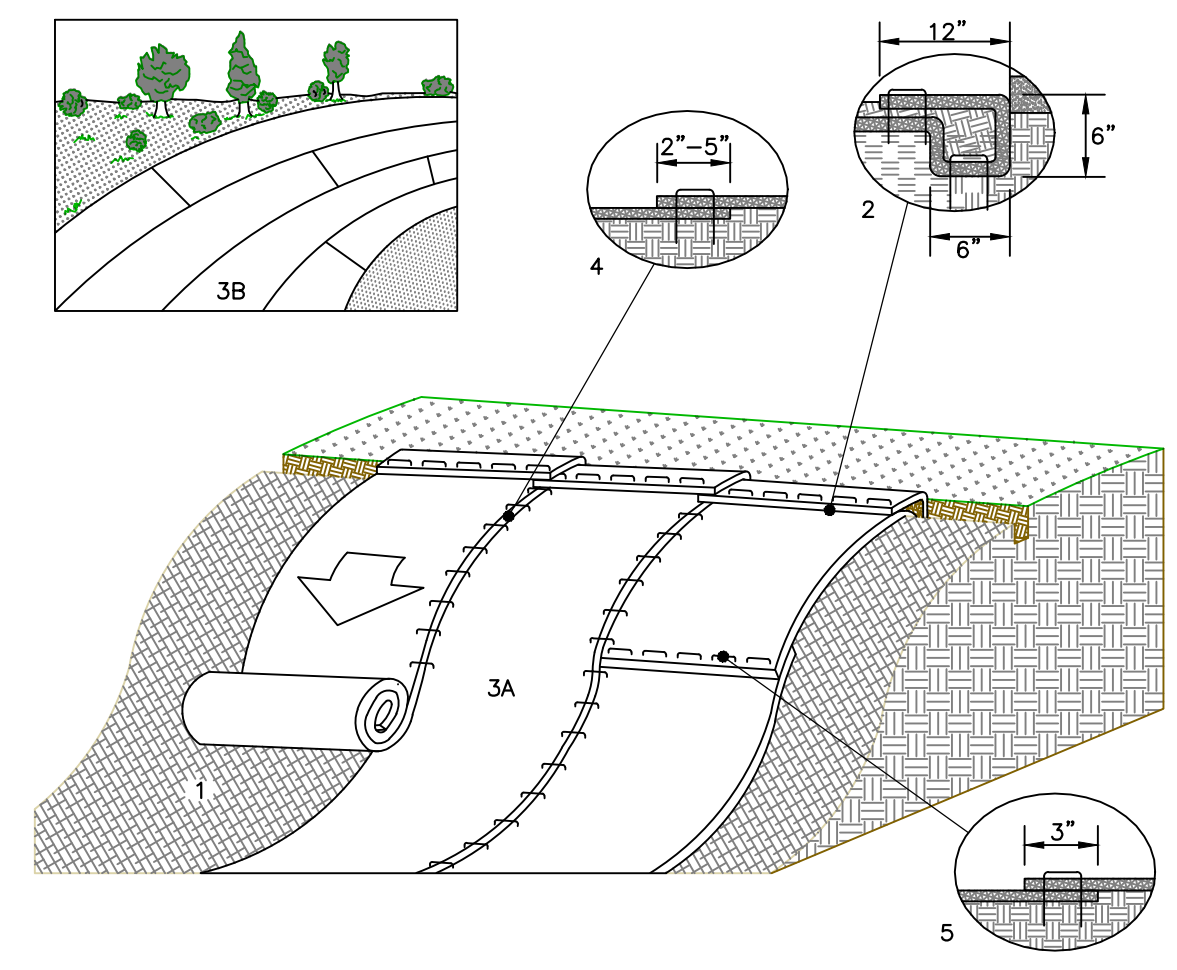
FILE: 1068_DETAILS

DATE:	12/28/15
JN:	1068
SCALE:	NTS
DESIGNED BY:	WHS
DRAWN BY:	WHS
CHECKED BY:	WHS

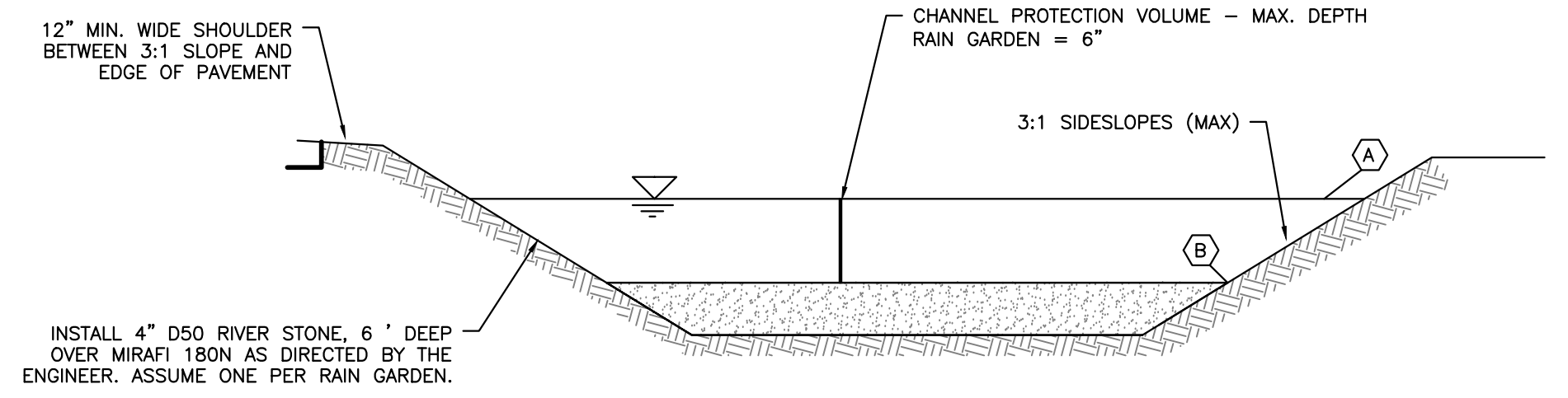
DRAWING NO. **C-43**



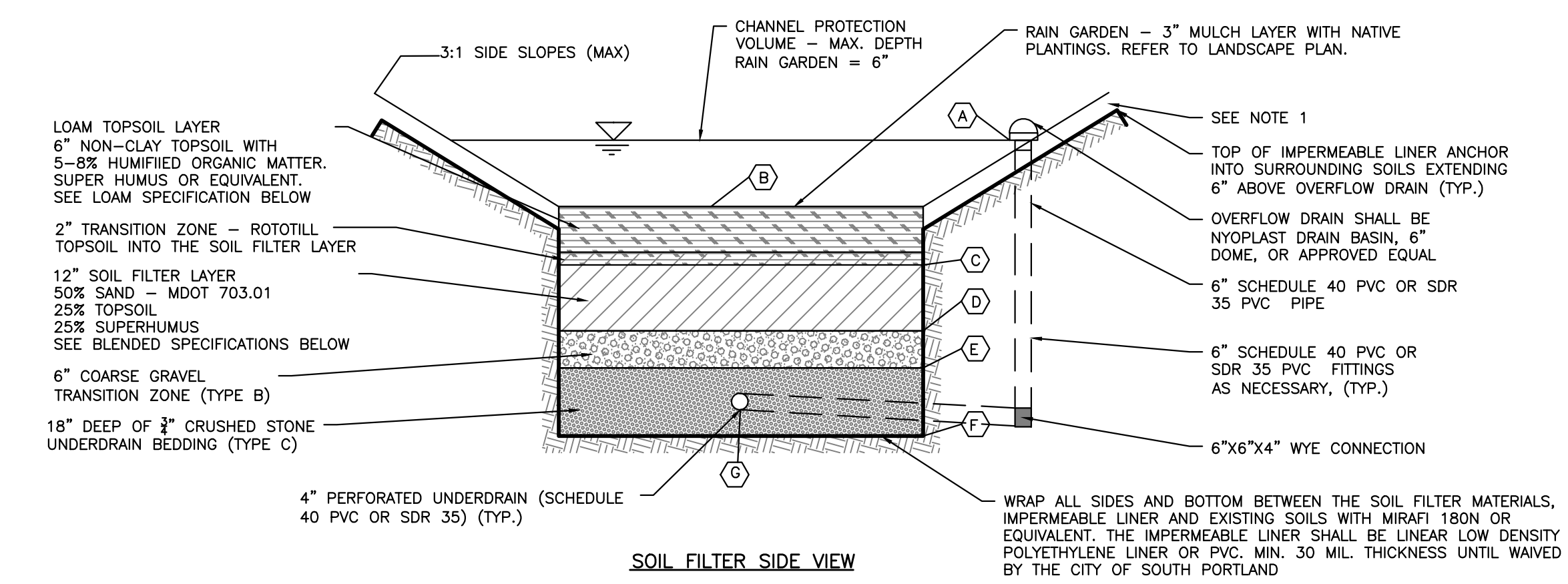
MASONRY PLUG DETAIL
NOT TO SCALE



EROSION CONTROL BLANKET SLOPE INSTALLATION
NOT TO SCALE



SOIL FILTER CROSS SECTION



SOIL FILTER SIDE VIEW

- NOTES:
- THE SIDESLOPES SHALL BE STABILIZED WITH A MIN. OF 4" LOAM, EROSION CONTROL BLANKETS SC150BN BY NORTH AMERICAN GREEN OR APPROVED EQUAL AND A CONSERVATION SEED MIX.
 - LIGHT COMPACTION SOIL FILTER AND PIPE BEDDING MATERIAL. (90 TO 92% STANDARD PROCTOR). TESTING SHALL BE PERFORMED BY A QUALIFIED MATERIAL TESTING FIRM.
 - THE SOIL FILTER MEDIA SHALL NOT BE CONSTRUCTED UNTIL THE AREA DRAINING TO THE BASIN HAS BEEN PERMANENTLY STABILIZED.
 - A SCHEDULE OF APPROPRIATE PLANTS FOR THE RAIN GARDENS AT THE SITE CONDITIONS IS LOCATED IN THE GRADING PLAN. LANDOWNER IS TO FINALIZE THE SCHEDULE.
 - TESTING: SIEVE ANALYSIS INCLUDING HYDROMETER TESTING FOR CLAY CONTENT FOR EACH LAYER SHALL BE PERFORMED BY A QUALIFIED SOIL TESTING LABORATORY AND SUBMITTED TO THE PROJECT ENGINEER FOR APPROVAL 2 WEEKS PRIOR TO CONSTRUCTION. ALL TESTING AND SUBMITTALS SHALL BE IN ACCORDANCE WITH THE MOST RECENT VERSION OF THE MAINE DEP - TECHNICAL DESIGN MANUAL SECTION 7.2.5 TESTING AND SUBMITTALS.
 - ACORN ENGINEERING, INC., RECOMMENDS THE SOIL FILTER LAYER BE SUPPLIED BY JONES ASSOCIATES, INC., AUBURN, ME.

6" LOAM TOPSOIL LAYER SPECIFICATION

SIEVE SIZE	% PASSING BY WEIGHT
#4	75-95
#10	60-90
#40	35-85
#200	20-70

1. CLAY FRACTION <10% PASSING THE #200 SIEVE.*

2. LOAM SHALL BE LOOSE AND FRAGILE AND SHALL BE FREE FROM ADMIXTURE OF SUBSOIL, REFUSE, LARGE STONES, CLODS OR ROOTS OR RHIZOMES OR "WITCH GRASS" OR OTHER UNDESIRABLE GRASSES.

*<10% CLAY PASSING THE #200 SIEVE ALLOWED PER EMAIL FROM MARIANNE HUBERT - MDEP TO WILL SAVAGE DATED 9/20/13

SOIL FILTER BED - SUPERHUMUS OR EQUIV. SPECIFICATION

SIEVE SIZE	% PASSING BY WEIGHT
1"	100
#200	0-5

MINIMAL CLAY CONTENT, NO MORE THAN 3-5% PASSING #200 SIEVE

12" SOIL FILTER BED - BLENDED SAND, LOAM, SUPERHUMUS SIEVE ANALYSIS

SIEVE SIZE	% PASSING BY WEIGHT
#10	85-100
#20	70-100
#60	15-40
#200	8-15

1. CLAY FRACTION <2% PASSING THE #200 SIEVE.

2. SUPERHUMUS OR EQUIVALENT

SCHEDULE

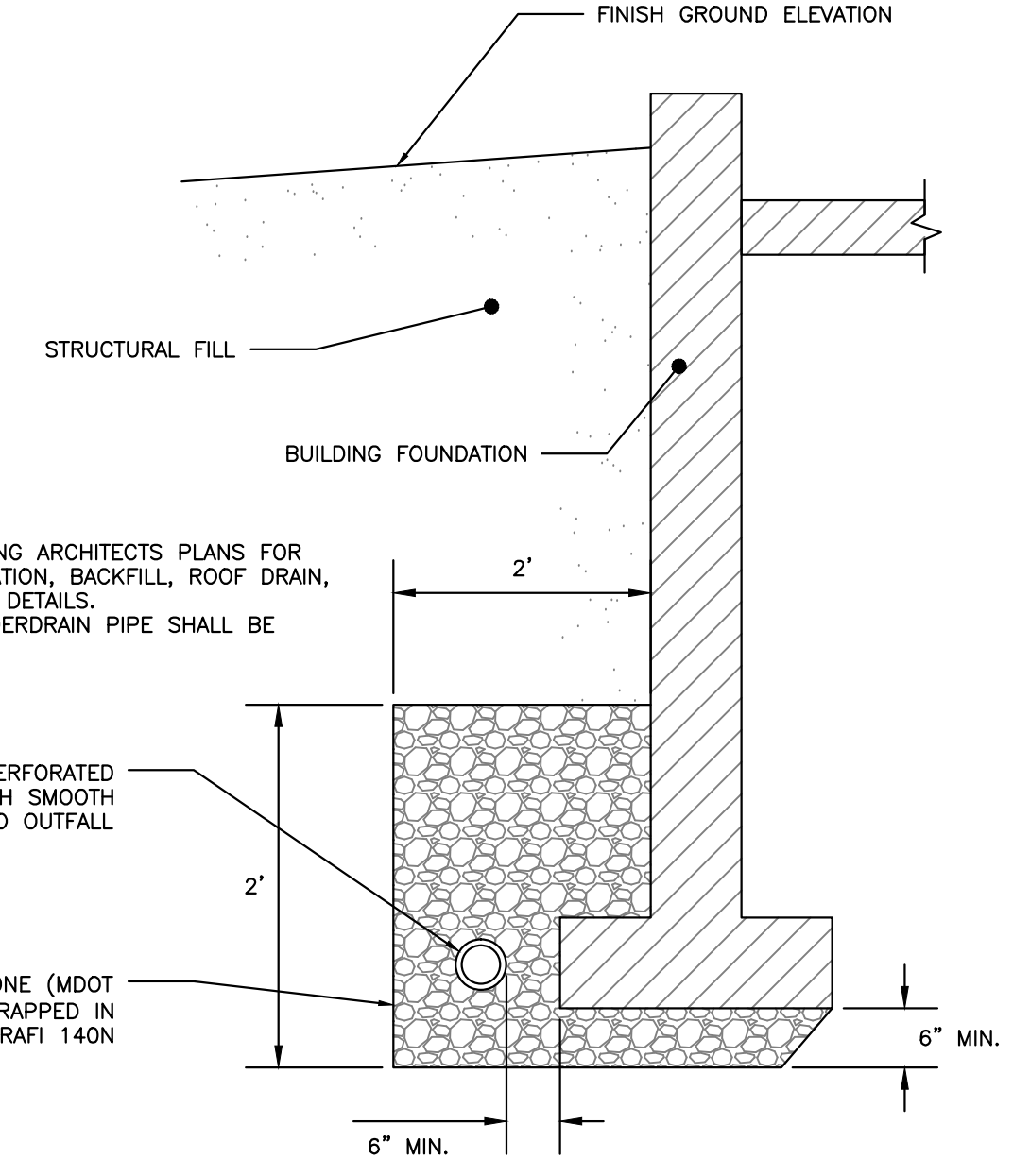
ITEM	RG-1
(A) PROPOSED OVERFLOW RIM	55.00'
(B) TOP OF LOAM TOPSOIL LAYER	54.50'
(C) TOP OF SOIL FILTER	54.00'
(D) TOP OF GRAVEL	53.00'
(E) TOP OF STONE	52.50'
(F) BOTTOM OF STONE	51.00'
(G) UNDERDRAIN INVERT	51.25'

SOIL FILTER BED - TRANSITION ZONE (TYPE B)

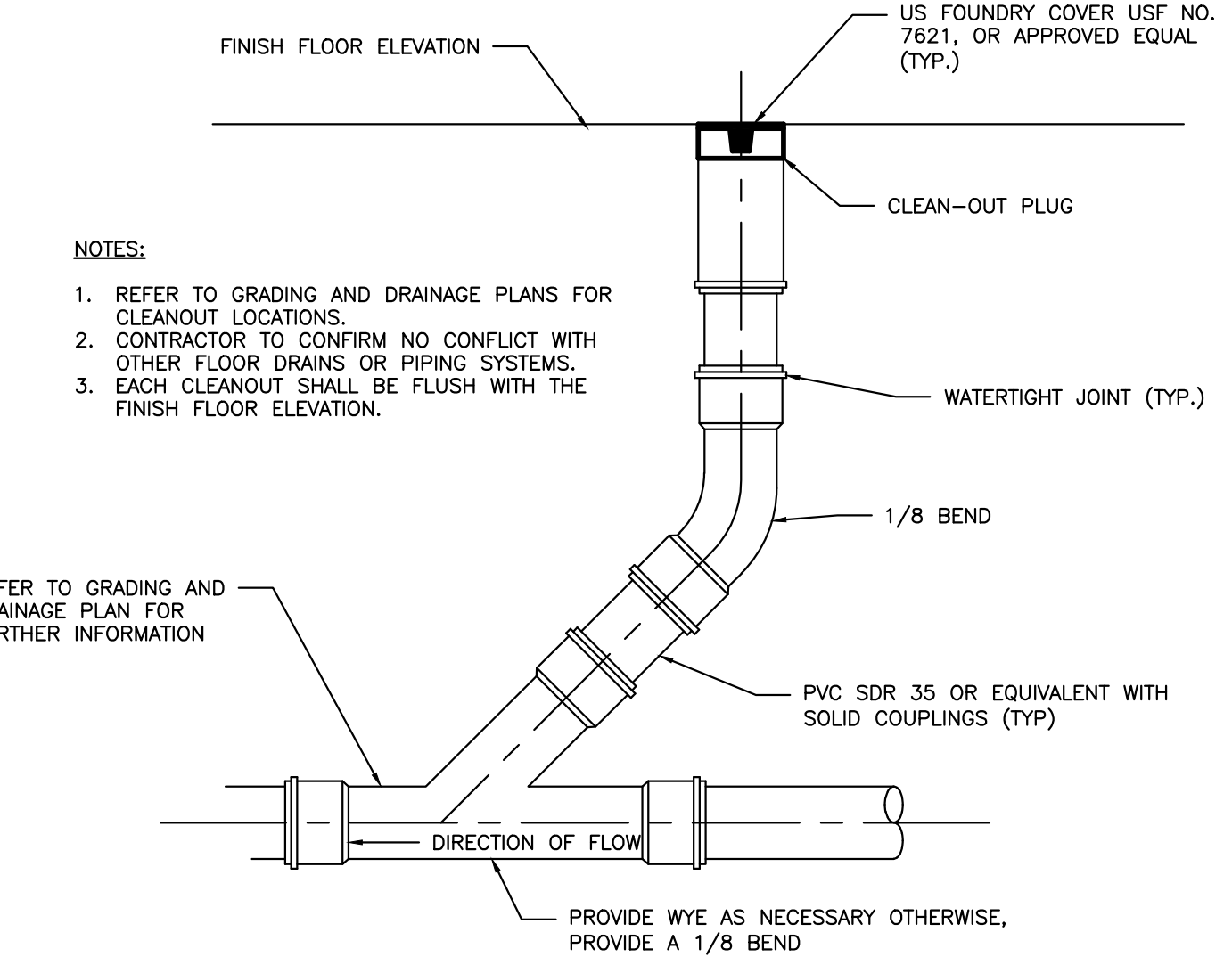
SIEVE SIZE	% PASSING BY WEIGHT
1"	90-100
1/2"	75-100
#4	50-100
#20	15-80
#50	0-15
#200	0-5

SOIL FILTER BED - UNDERDRAIN BEDDING (TYPE C)

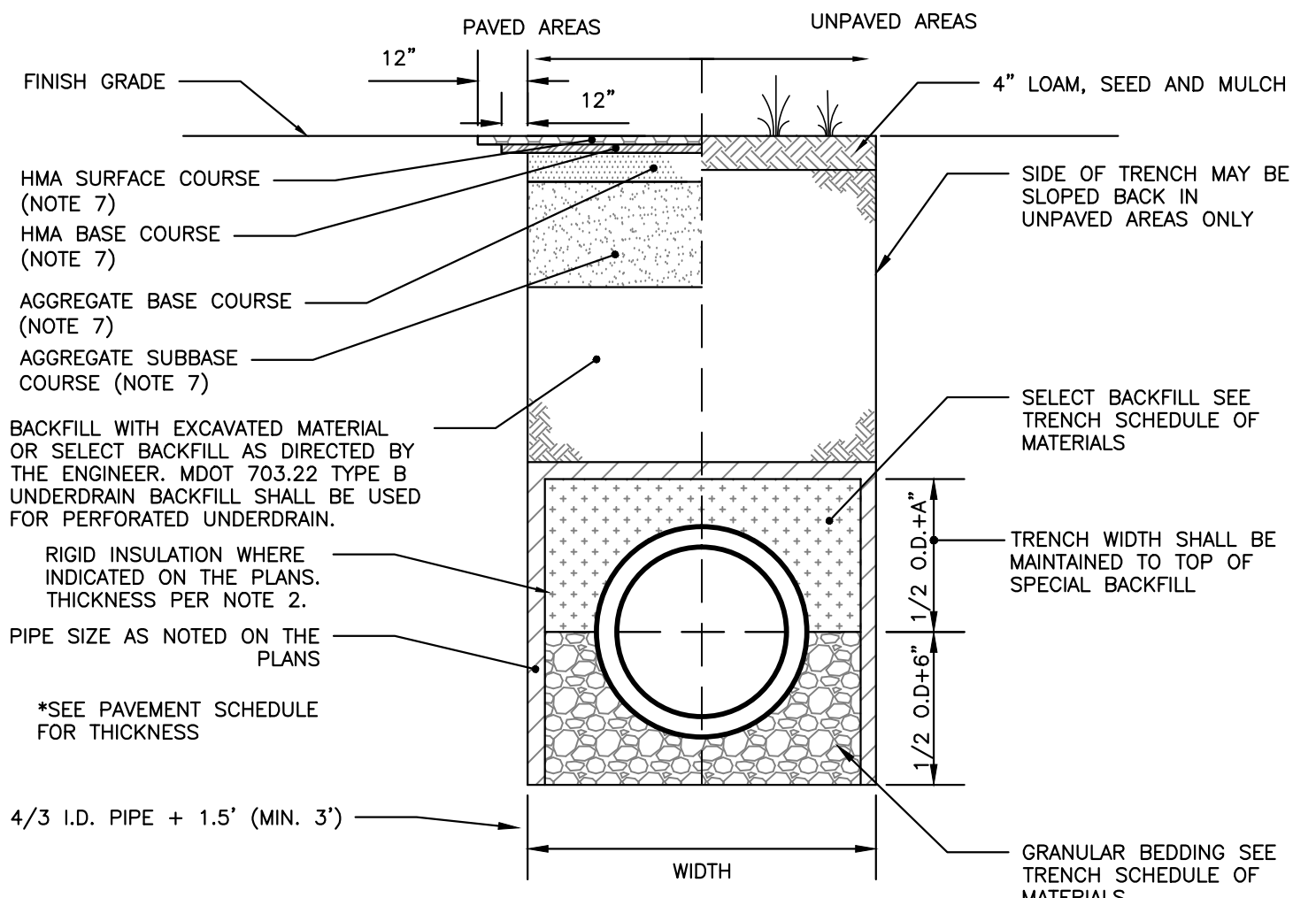
SIEVE SIZE	% PASSING BY WEIGHT
1"	100
3/4"	90-100
3/8"	0-75
#4	0-25
#10	0-5



FOUNDATION DRAIN DETAIL
NOT TO SCALE



CLEANOUT DETAIL
NOT TO SCALE



STORM DRAIN AND SEWER TYPICAL TRENCH SECTION
NOT TO SCALE

SCHEDULE OF MATERIALS

TYPE OF PIPE	GRANULAR BEDDING	SELECT BACKFILL
CMP DUCTILE IRON RCP	MDOT 703.22 TYPE B UD BACKFILL	MDOT 703.22 TYPE B UD BACKFILL
PVC/HDPE	MDOT 703.22 TYPE C 3/4" CRUSHED STONE	MDOT 703.22 TYPE B UD BACKFILL
CMP	MDOT 703.22 TYPE C 3/4" CRUSHED STONE	MDOT 703.22 TYPE C 3/4" CRUSHED STONE

- NOTES:
- BRACING AND SHEETING OR OTHER TRENCH PROTECTION TO BE PROVIDED TO MEET APPLICABLE STATE AND O.S.H.A. SAFETY STANDARDS. ALL SUCH TRENCH PROTECTION TO BE THE RESPONSIBILITY OF THE CONTRACTOR.
 - STORM DRAIN COVER BETWEEN 2' AND 3' SHALL INCLUDE 4" OF RIGID INSULATION. COVER BETWEEN 3' AND 4' SHALL INCLUDE 2" RIGID INSULATION. OTHER UTILITIES: ADD 2" OF RIGID INSULATION FOR EACH FOOT ABOVE MINIMUM DEPTH.
 - INSTALL WARNING TAPE DIRECTLY ABOVE UTILITIES AT THE TOP OF SUBGRADE.
 - MINIMUM COVER
 - 2'-0" - STORM DRAIN
 - 5'-0" - SEWER
 - NO TREES SHALL BE PLANTED WITHIN 5' OF A SEWER PIPE OR SERVICE.
 - THIS DETAIL SHALL BE APPLIED ONLY TO DRAINAGE PIPE TRENCHES OUTSIDE OF THE CITY OF PORTLAND ROW.
 - THICKNESS AS NOTED BY SURFACE DETAILS.

ISSUED FOR PERMITTING
NOT FOR CONSTRUCTION

