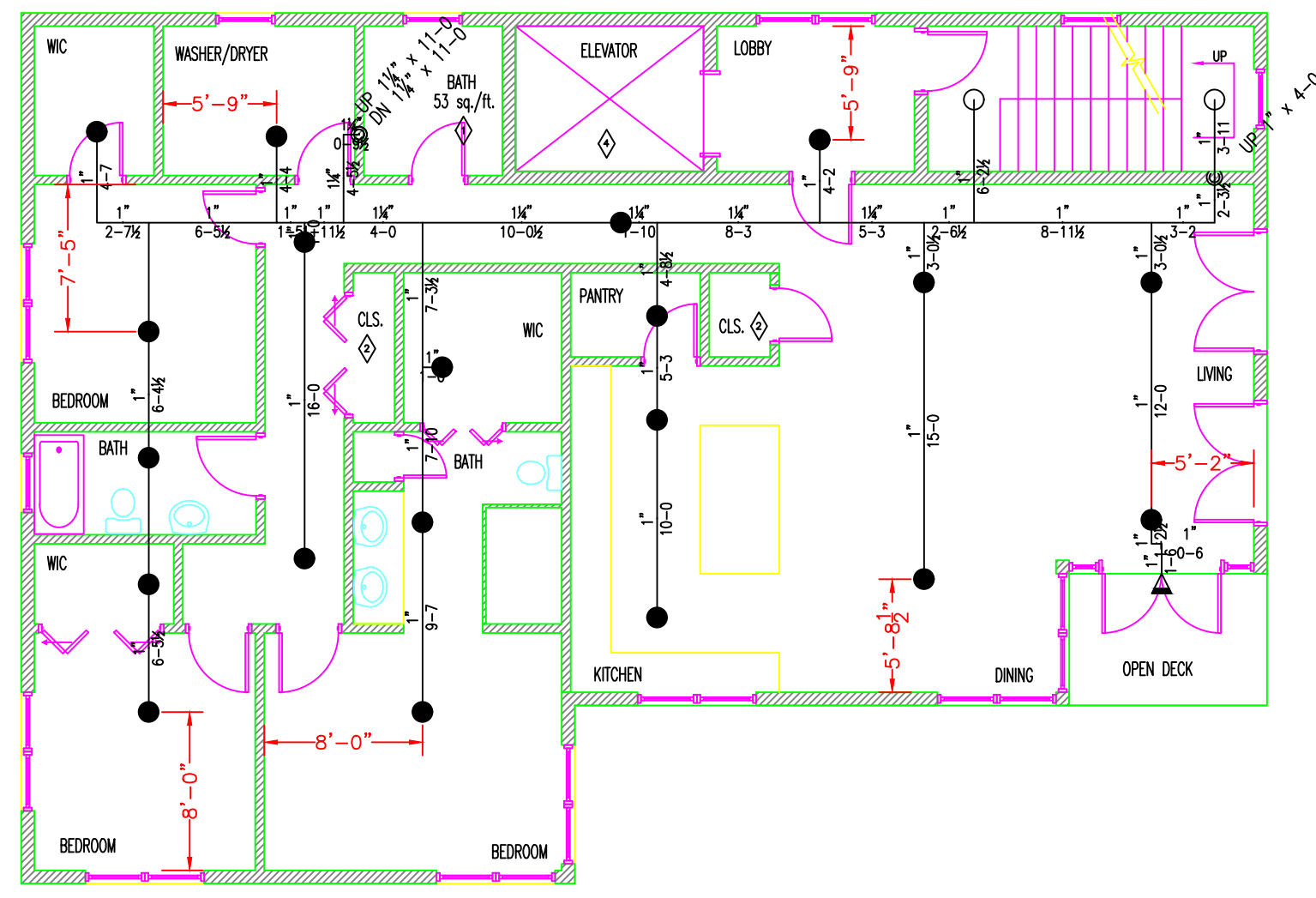
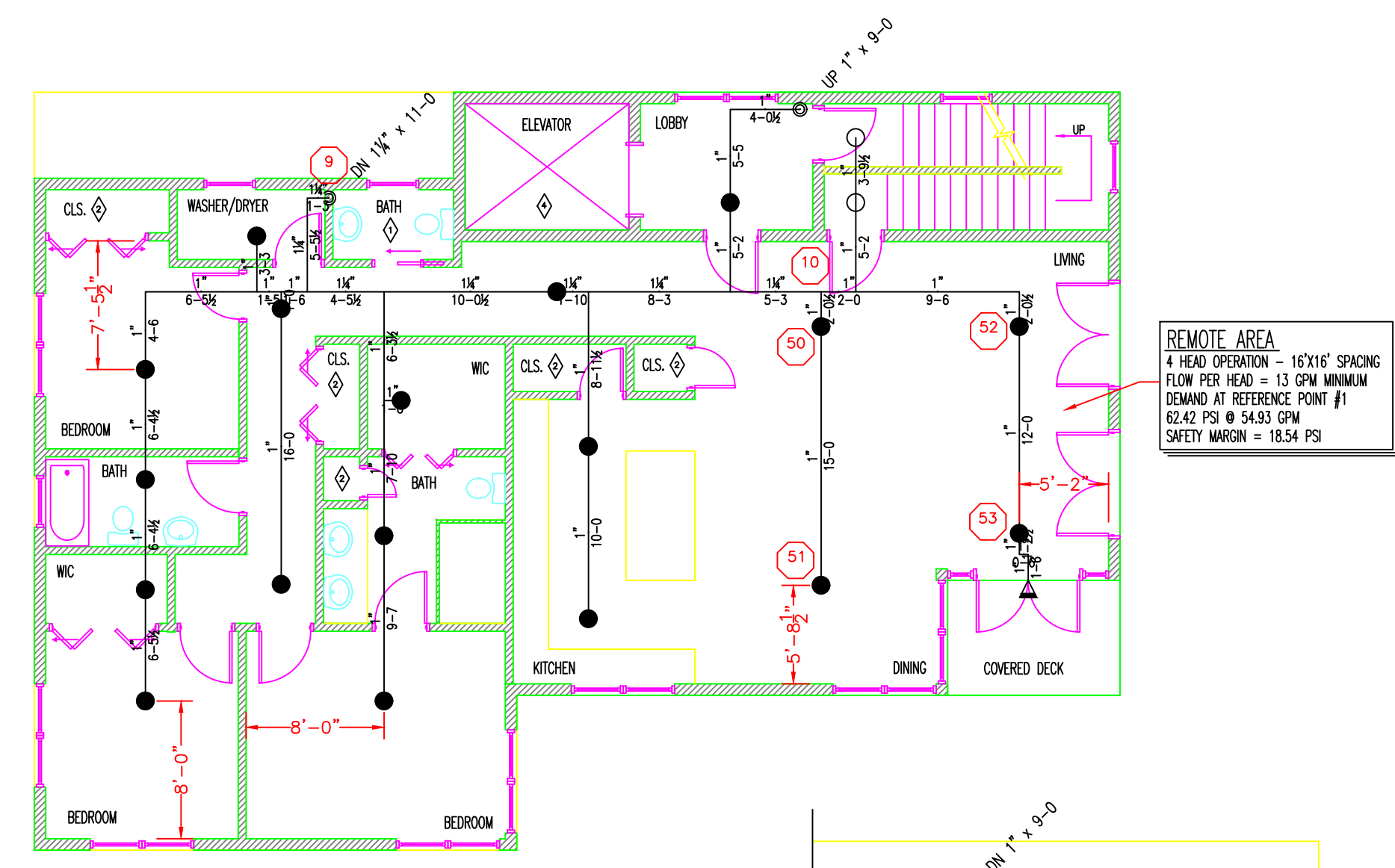


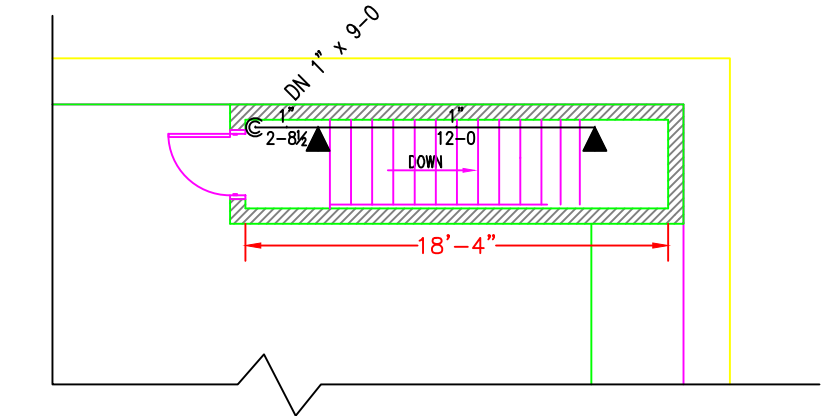
FIRST FLOOR



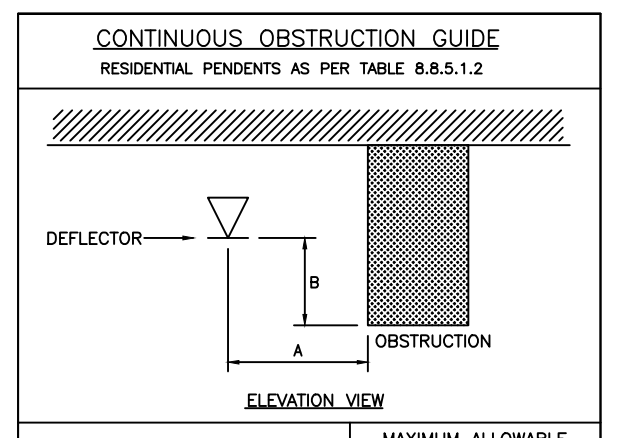
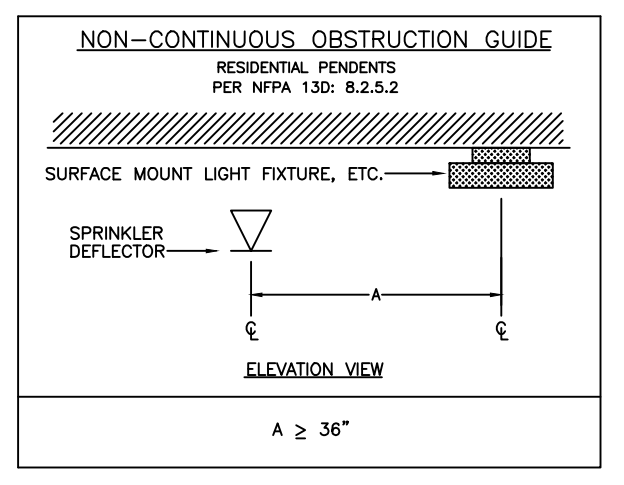
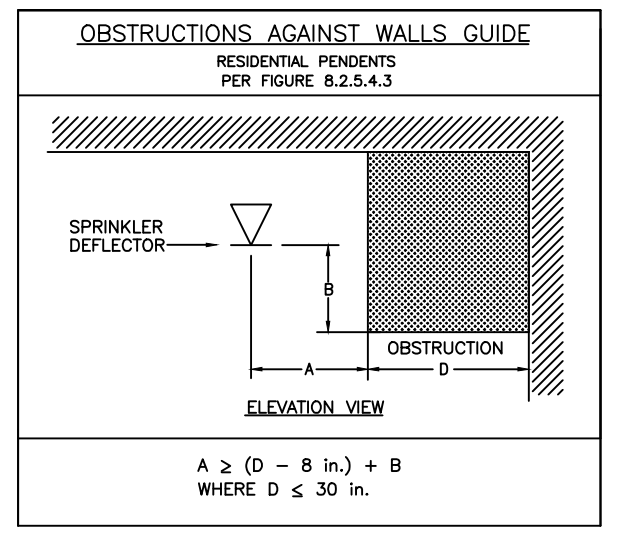
SECOND FLOOR



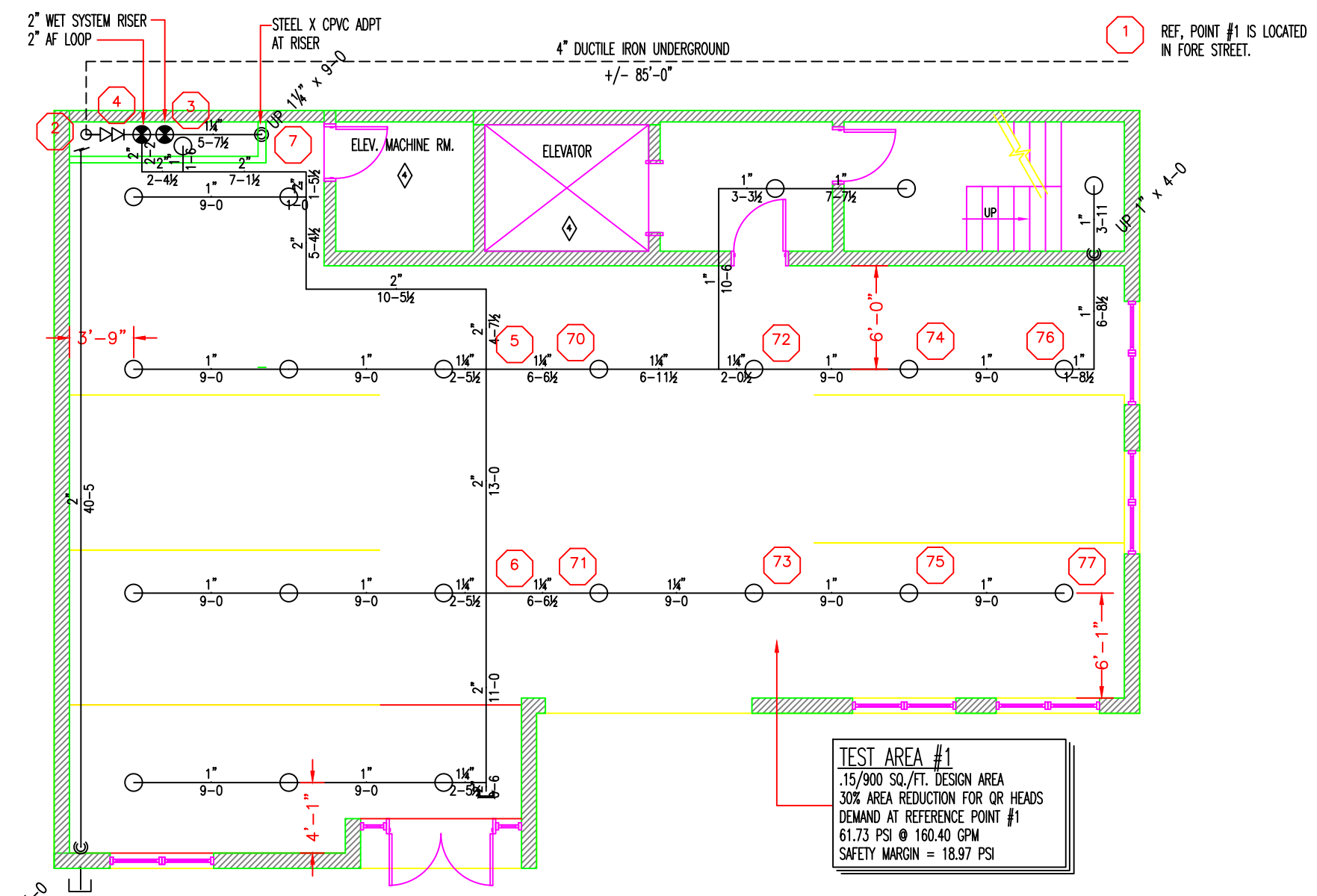
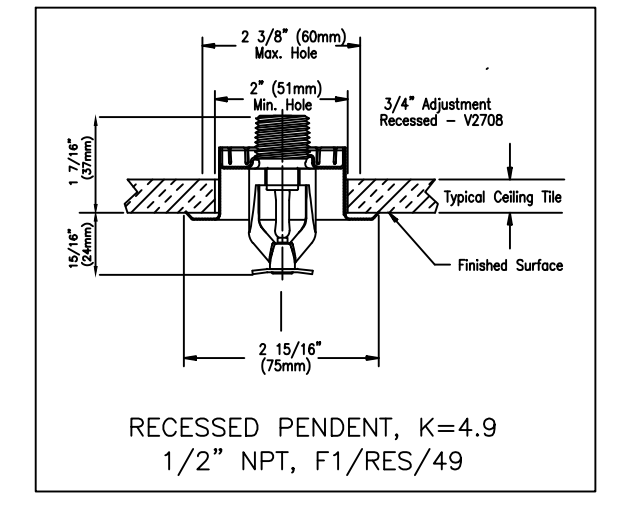
THIRD FLOOR



ROOF ACCESS STAIR

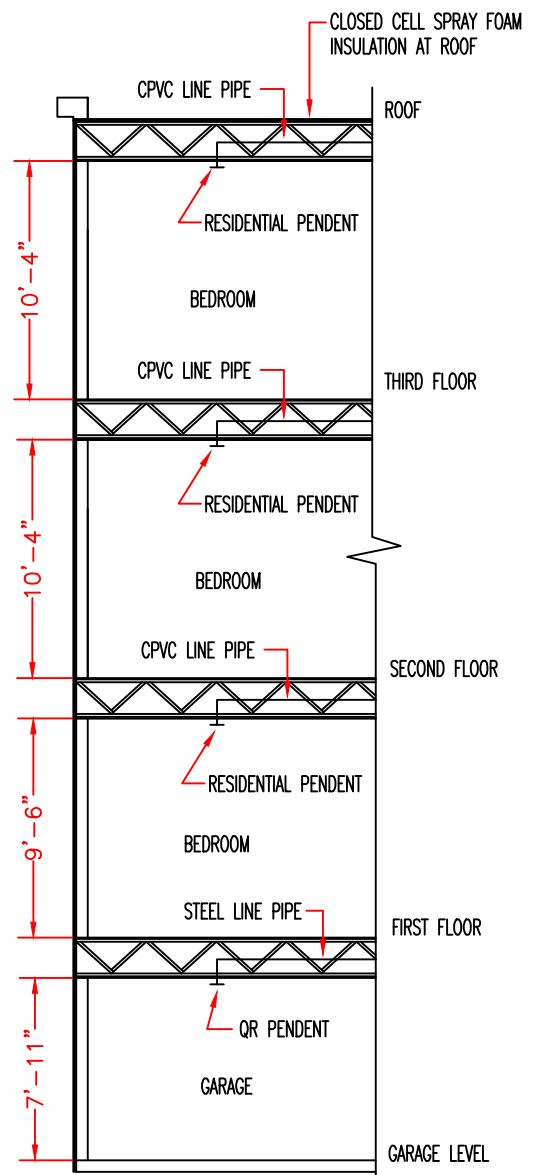
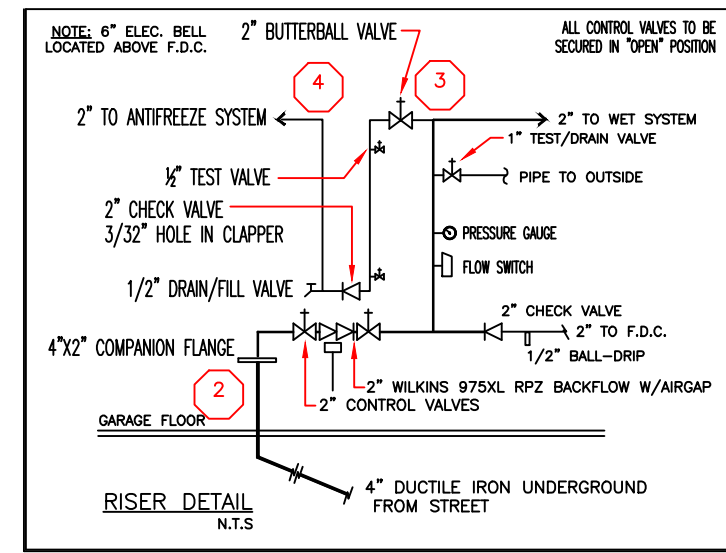


DISTANCE FROM SPRINKLERS FROM SIDE OF OBSTRUCTION (A)	MAXIMUM ALLOWABLE DISTANCE OF DEFLECTOR ABOVE BOTTOM OF OBSTRUCTION (IN.) (B)
LESS THAN 1 FT.	0
1 FT. TO LESS THAN 1 FT. 6 IN.	0
1 FT. 6 IN. TO LESS THAN 2 FT.	1
2 FT. TO LESS THAN 2 FT. 6 IN.	1
2 FT. 6 IN. TO LESS THAN 3 FT.	1
3 FT. TO LESS THAN 3 FT. 6 IN.	3
3 FT. 6 IN. TO LESS THAN 4 FT.	3
4 FT. TO LESS THAN 4 FT. 6 IN.	5
4 FT. 6 IN. TO LESS THAN 5 FT.	7
5 FT. TO LESS THAN 5 FT. 6 IN.	7
5 FT. 6 IN. TO LESS THAN 6 FT.	7
6 FT. TO LESS THAN 6 FT. 6 IN.	9
6 FT. 6 IN. TO LESS THAN 7 FT.	11
7 FT. AND GREATER	14

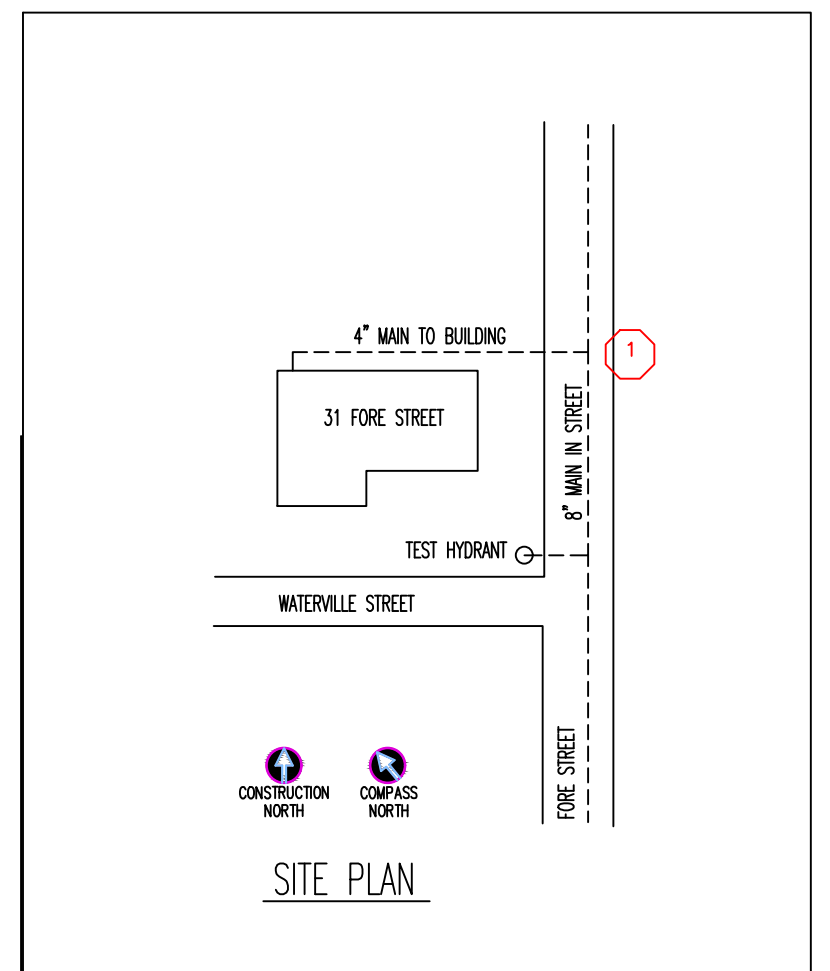


GARAGE LEVEL

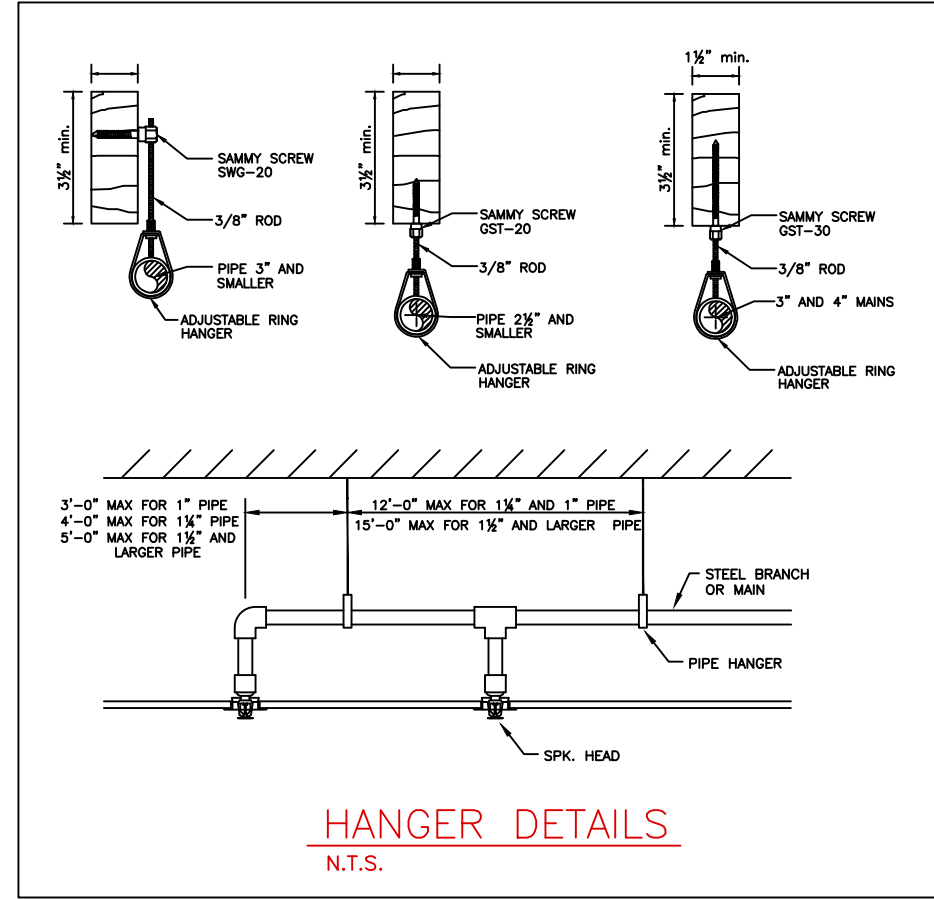
FLOW TEST INFORMATION
 TEST PERFORMED: 11/2/16 @ 1:00 AM BY: EM
 STATIC/RESIDUAL HYDRANT LOCATION: HYDRANT - FFD-11000175
 STATIC READING: 81 PSI
 RESIDUAL READING: 70 PSI
 FLOWING HYDRANT LOCATION: HYDRANT - FFD-11000176
 FLOW READING: 1125 GPM



BUILDING SECTION



SITE PLAN



HANGER DETAILS N.T.S.

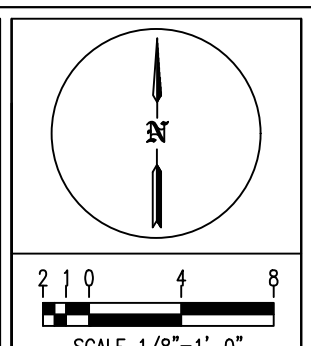
KEYED NOTES

- SPRINKLERS ARE NOT REQUIRED IN BATHROOMS UNDER 55 FT² PER NFPA 13R-6.6.2
- SPRINKLERS ARE NOT REQUIRED IN CLOTHES CLOSETS AND PANTRIES UNDER 24 SQ. FT. PER NFPA 13R-6.6.3
- SPRINKLERS ARE NOT REQUIRED IN ATTICS, CRAWL SPACES, ELEVATOR SHAFTS OR CONCEALED SPACES PER NFPA 13R-6.6.6

GENERAL NOTES:

- NEW 3 STORY APARTMENT BUILDING TO BE PROTECTED WITH AN NFPA 13R COMPLIANT FIRE SPRINKLER SYSTEM.
- WET FIRE SPRINKLER SYSTEM TO PROTECT FIRST, SECOND AND THIRD FLOOR LEVELS. ANTIFREEZE SYSTEM TO PROTECT GARAGE. OWNER AND AHJ UNDERSTAND ANTIFREEZE IS NOT LISTED AND SYSTEM DOES NOT COMPLY WITH NFPA 13R STANDARDS. FACTORY PRE-MIXED FIREFIGHTER GL GLYCERINE TO BE UTILIZED FOR CPVC PIPE COMPATIBILITY.
- PIPE SIZED BY HYDRAULIC CALCULATIONS FOR THE PROTECTION OF RESIDENTIAL OCCUPANCY PER NFPA 13R STANDARDS. GARAGE CALCULATED TO ORDINARY 1 HAZARD OCCUPANCY.
- GARAGE LEVEL PIPE TO BE SCHEDULE 10 AND 40 BLACK STEEL CONNECTED WITH LISTED GROOVED AND CAST IRON THREADED FITTINGS. PIPE TO BE SUPPORTED TO NFPA 13 STANDARDS. PIPE ON FIRST THROUGH THIRD FLOOR LEVELS TO BE LISTED CPVC CONNECTED WITH CPVC FITTINGS.
- SPRINKLERS OMITTED FROM SMALL CLOSETS, SMALL BATHS, ATTIC AND COMBUSTIBLE CONCEALED SPACES AS PERMITTED BY NFPA 13R, CHAPTER 6, SECTION 6.8.
- OWNER IS RESPONSIBLE TO TEST AND MAINTAIN SYSTEM TO NFPA 13R REQUIREMENTS.

PROJECT RMS - JEFFREY DENIS - RMS226
 Alternative Sprinkler Fire Protection
 39 Jackson Road
 Poland Springs, ME
 (207) 838-8930
 MAINE CONTRACTOR LICENSE NUMBER - FSC60



LEGEND

(O)	HYDRAULIC REFERENCE POINTS
(H)	HANGER LOCATION
(R)	PIPE RISE/DROP
(0-0)	CENTER OF PIPE ABOVE FLOOR (ft-in.)
(0-BH)	CENTER OF PIPE FROM BOTTOM OF DECK (in.)
(-)	EXISTING PIPE TO REMAIN
(-)	NEW PIPE INSTALLATION
(-)	CEILING HEIGHT

SPRINKLER INFORMATION

TOTAL HEADS THIS SHEET: 93	TOTAL HEADS THIS JOB: 93							
SYM	QTY	POSITION	FINISH	TEMP	K	NPT	MFG.	MODEL#
29	29	PENDENT	WHITE	155	5.6	1/2"	RELIABLE	F1FR SSP
3	3	SIDEWALL	CHROME	155	5.6	1"	RELIABLE	F3OR DRY HSW
2	2	SIDEWALL	CHROME	155	5.6	1/2"	RELIABLE	F1FR56 HSW
59	59	PENDENT	WHITE	155	4.9	1/2"	RELIABLE	F1/RES/49

31 FORE STREET PORTLAND, ME		SCALE: 1/8"=1'-0"
CONTRACT WITH		DRAWN BY: JGD
REVISIONS		DATE: 4/10/17
NO	DATE	DESCRIPTION
JOB NUMBER: SC16008		SHEET NUMBER: F1 of 1