

P. Lighting

Please refer to the attached photometric plan and cut sheets for information regarding the proposed lighting models. These lights will not inflict significant light trespass within abutter's properties or the City right-of-way.





Charron, Inc.
P.603-624-4827
C.207-907-9786

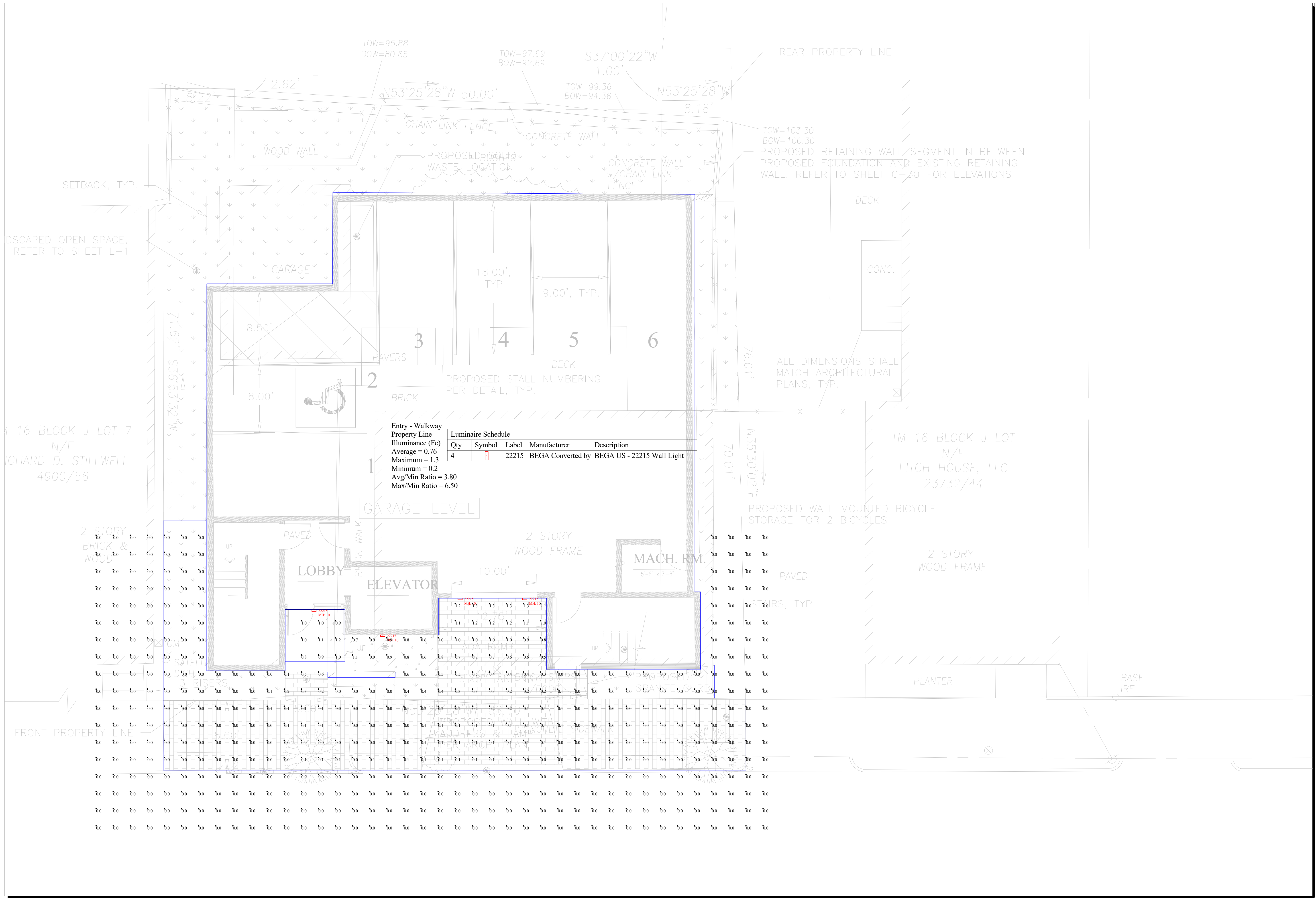
| # | Date | Comments |
|---|------|----------|
| | | |
| | | |
| | | |

| # | Date | Comments |
|---|------|----------|
| | | |
| | | |
| | | |

Drawn By: MKC
 Checked By: MKC
 Date: 10/13/2017

Scale: 1" = 5'

**24 St. Lawrence Street
 Site Lightign Plan
 Portland, Maine**



16 BLOCK J LOT 7
 N/F
 RICHARD D. STILLWELL
 4900/56

TM 16 BLOCK J LOT
 N/F
 FITCH HOUSE, LLC
 23732/44

Impact resistant wall luminaires · shielded

Housing: One piece die-cast aluminum supplied with universal mounting bracket for direct attachment to 3½" or 4" octagonal wiring box. Die castings are marine grade, copper free ($\leq 0.3\%$ copper content) A360.0 aluminum alloy.

Enclosure: Molded clear glass diffuser ¼" thick with diffused stippled interior surface retained by one piece die-cast aluminum guard, secured by four (4) captive socket head, stainless steel screws threaded into stainless steel inserts. Interior of lamp compartment painted gloss white. Fully gasketed for weather tight operation in any mounting orientation using a molded silicone rubber 'U' channel gasket.

Electrical: 4.3W LED luminaire, 6 total system watts, -30°C start temperature. Integral 120V through 277V electronic LED driver, 0-10V dimming. LED module(s) are available from factory for easy replacement. Standard LED color temperature is 3000K with an 85 CRI. Available in 4000K (85 CRI); add suffix K4 to order.

Note: LEDs supplied with luminaire. Due to the dynamic nature of LED technology, LED luminaire data on this sheet is subject to change at the discretion of BEGA-US. For the most current technical data, please refer to www.bega-us.com.

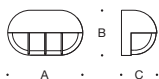
Finish: All BEGA standard finishes are polyester powder coat with minimum 3 mil thickness. Available in four standard BEGA colors: Black (BLK); White (WHT); Bronze (BRZ); Silver (SLV). To specify, add appropriate suffix to catalog number. Custom colors supplied on special order

CSA certified to U.S. and Canadian standards, suitable for wet locations. Protection class IP65

Weight: 3.1 lbs.

Luminaire Lumens: 103

Type:
 BEGA Product:
 Project:
 Voltage:
 Color:
 Options:
 Modified:



| | Lamp | A | B | C |
|--------------|---------------------|----|----|---|
| 33428 | ADA 4.3W LED | 8¾ | 5½ | 4 |



Wall luminaires for light in two directions

Housing: One piece die-cast aluminum supplied with universal mounting bracket for direct attachment to 3 1/2" or 4" octagonal wiring box. Die castings are marine grade, copper free ($\leq 0.3\%$ copper content) A360.0 aluminum alloy.

Enclosure: One piece die-cast aluminum cover frame, secured by captive socket head, stainless steel screws threaded into stainless steel inserts. Interior of lamp compartment painted gloss white. One piece, handblown clear glass with internal fluted structure and translucent white-painted coating. Glass has a transmittance of 81%.

Electrical: 6.3W LED luminaire, 8.6 total system watts, -30°C start temperature. Integral 120V through 277V electronic LED driver, 0-10V dimming. LED module(s) are available from factory for easy replacement. Standard LED color temperature is 3000K with an 85 CRI. Available in 4000K (85 CRI); add suffix K4 to order.

Note: LEDs supplied with luminaire. Due to the dynamic nature of LED technology, LED luminaire data on this sheet is subject to change at the discretion of BEGA-US. For the most current technical data, please refer to www.bega-us.com.

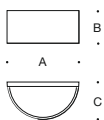
Finish: All BEGA standard finishes are polyester powder coat with minimum 3 mil thickness. Available in four standard BEGA colors: Black (BLK); White (WHT); Bronze (BRZ); Silver (SLV). To specify, add appropriate suffix to catalog number. Custom colors supplied on special order.

CSA certified to U.S. and Canadian standards, suitable for wet locations. Protection class IP65

Weight: 4.9 lbs

Luminaire Lumens: 260

Type:
 BEGA Product:
 Project:
 Voltage:
 Color:
 Options:
 Modified:



| Lamp | A | B | C |
|-----------------------|-------|-------|-------|
| 33334 6.3W LED | 9 7/8 | 4 5/8 | 5 3/8 |



Impact resistant wall luminaires

Housing: One piece die-cast aluminum with mounting holes for direct attachment to the wall over a 3 1/2" or 4" octagonal wiring box. Die castings are marine grade, copper free ($\leq 0.3\%$ copper content) A360.0 aluminum alloy.

Enclosure: Molded clear glass diffuser with diffused stippled interior surface, fully gasketed for weather tight operation using a molded silicone rubber O-ring gasket. One piece die-cast aluminum half lid and guard, secured by three (3) captive socket head, stainless steel screws threaded into stainless steel inserts. Interior painted white.

Electrical: 4.3W LED luminaire, 6 total system watts, -30°C start temperature. Integral 120V through 277V electronic LED driver, 0-10V dimming. LED module(s) are available from factory for easy replacement. Standard LED color temperature is 3000K with an 85 CRI. Available in 4000K (85 CRI); add suffix K4 to order.

Note: LEDs supplied with luminaire. Due to the dynamic nature of LED technology, LED luminaire data on this sheet is subject to change at the discretion of BEGA-US. For the most current technical data, please refer to www.bega-us.com.

Finish: All BEGA standard finishes are polyester powder coat with minimum 3 mil thickness. Available in four standard BEGA colors: Black (BLK); White (WHT); Bronze (BRZ); Silver (SLV). To specify, add appropriate suffix to catalog number. Custom colors supplied on special order.

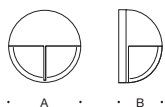
CSA certified to U.S. and Canadian standards, suitable for wet locations. Protection class IP65

Weight: 3.5 lbs.

Luminaire Lumens: 180

Tested in accordance with LM-79-08

Type:
 BEGA Product:
 Project:
 Voltage:
 Color:
 Options:
 Modified:



| | Lamps | A | B |
|--------------|----------|--------|--------|
| 33528 | 4.2W LED | 8 1/2" | 4 7/8" |

DESCRIPTION

Cambria 922 is a small dimmable LED or MR16 low voltage sign lighting luminaire. It attaches to a wall mounted straight arm and delivers full vertical adjustment for easy aiming. Optional 14", 18", 24", 30" or 36" straight arms are available. Various lenses, louvers and color or dichroic filters can be combined - up to three at once - to create multiple lighting effects. Lumiere's exclusive Siphon Protection System (S.P.S.) prevents water from siphoning into the fixture through its own lead wires.

| | | |
|--------------------|--|-------------|
| Catalog # | | Type |
| Project | | |
| Comments | | Date |
| Prepared by | | |

SPECIFICATION FEATURES

Material

Housing, hood, straight arm and wall mounting plate are precision-machined from corrosion-resistant billet stock 6061-T6 aluminum. Premium metals such as C360 brass, C932 bronze, C110 copper or 303/304 stainless steel are available on request.

Finish

Fixtures constructed from 6061-T6 aluminum are double protected by a chemical film undercoating and polyester powdercoat paint finish, surpassing the rigorous demands of the outdoor environment. A variety of standard colors are available.

Hood

Hood is removable for easy relamping and accepts up to three internal accessories at once (lenses, louvers, filters) to achieve multiple lighting effects. Weep holes prevent water and mineral stains from collecting on the lens, even in the straight-up position.

Gasket

Housing and hood are sealed with a high temperature silicone o-ring

gasket to prevent water intrusion.

Lens

Tempered glass lens, factory sealed with high temperature adhesive to prevent water intrusion and breakage due to thermal shock.

Adjustable Mounting Arm

Straight arm with adjustable side swivel provides 340° of vertical adjustment for easy aiming. Optional 14", 18", 24", 30" or 36" straight arms are available (specify option -SA14, -SA18, -SA24, -SA30 or -SA36). Stainless steel aim-locking mechanisms are standard. 4-1/4" diameter wall mounting plate attaches directly to standard J-box with provided screws. Lumiere's exclusive Siphon Protection System (S.P.S.) prevents water from siphoning into the fixture through its own lead wires.

Hardware

Stainless steel hardware is standard to provide maximum corrosion resistance.

Socket

Ceramic socket with 250° CTeflon® coated lead wires and GU5.3 bi-pin base.

Electrical

Remote 12V transformer required (not included). Available from Lumière as an accessory - see the Accessories & Technical Data section of the catalog for details. NOTE: initial power draw on LED equipped fixtures is 15 watts. When sizing transformer use 15 watts per LED fixture. Nominal power draw after start up is 6 watts or 10 watts accordingly.

Lamp

Halogen lamp not included. Sora lamp compatible (6W Max). LED modules are included and are available in four color temperatures (2700, 3000, 4000, and 5700) and three distributions (spot, narrow, and flood). Both color temperature and distribution must be specified when ordering.

Warranty

Lumière warrants its fixtures against defects in materials & workmanship for three (3) years. Auxiliary equipment such as transformers, ballasts and lamps carry the original manufacturer's warranty.



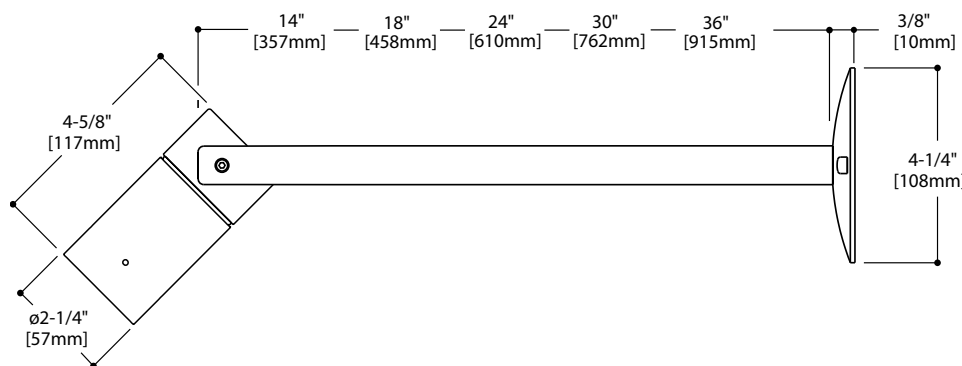
922
CAMBRIA
LED
HALOGEN

APPLICATIONS:
SIGN LIGHT



CERTIFICATION DATA
UL and cUL Wet Location Listed
LM79 / LM80 Compliant
ROHS Compliant
IP65 Ingress Protection Rated

TECHNICAL DATA
Low Voltage:
50W Max Halogen MR16
6W LED, L70/60,000 hours at 25°C
10W LED, L70/60,000 hours at 25°C



ORDERING INFORMATION

Sample Number: 922-10LED2712-12-BK-SA14

| Series | Source (for LED, select from each column and combine) | Voltage | Finish | Stem Length |
|---|--|---------|--|---|
| 922=LED or MR16 Cambria Sign Light., Straight Arm, Side Stem, Single Head | 50MR16=50W max. Halogen MR16 (lamp not included) | 12=12V | Painted BK=Black BZ=Bronze CS=City Silver VE=Verde WT=White | SA14= 14" Length SA18 = 18" Length SA24= 24" Length SA30= 30" Length SA36= 36" Length |
| | 6LED=6W LED 10LED=10W LED | | | |

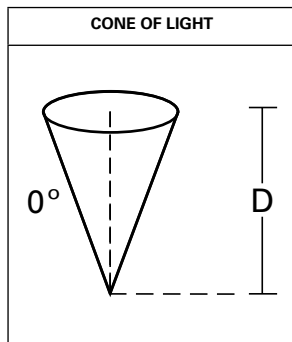
NOTES: 1 Unless noted otherwise, lamps not included. 2 See Accessories & Technical Data section of Lumiere catalog for Mounting Accessories. 3 Consult your customer service representative for additional options and finishes.

OPTICAL ACCESSORIES - ORDER SEPARATELY

| Filters (2.00" Diameter) | Optical Lenses (2.00" Diameter) | Optical Louvers (2.00" Diameter) |
|---|--|--|
| F71 = Peach Dichroic F72 = Amber Dichroic F73 = Green Dichroic F74 = Medium Blue F75 = Yellow Dichroic F76 = Red Dichroic F77 = Dark Blue Dichroic F78 = Light Blue Dichroic F79 = Neutral Density Dichroic F80 = Magenta Dichroic F22 = Red Color F33 = Blue Color F44 = Green Color F55 = Yellow Color F66 = Mercury Vapor | LSL =Linear Spread Lens (elongates standard beam spread) DIF =Diffused Lens (provides even illumination) OSL =Overall Spread Lens (increases standard beam spread) | LVR =45° Hex Cell Louver (reduces glare) |

CAMBRIA 922 MR16 HALOGEN PHOTOMETRY DATA

Horizontal Illuminance on Surface - Cambria 922 Standard Recessed Hood - 50W MR16



| Filename | 922-50MR16-12-BK-NSP.ies | |
|----------|--------------------------|---------------|
| Lamp | 50W MR16 NSP | |
| CBCP | 11,000 | |
| D | FC | Beam Diameter |
| 2' | 2550 | 1'6" |
| 4' | 638 | 1'0" |
| 6' | 283 | 1'6" |
| 8' | 159 | 2'0" |
| 10' | 102 | 3'0" |
| 15' | 45 | 4'0" |

| Filename | 922-50MR16-12-BK-NFL.ies | |
|----------|--------------------------|---------------|
| Lamp | 50W MR16 NFL | |
| CBCP | 3,200 | |
| D | FC | Beam Diameter |
| 2' | 725 | 1'0" |
| 4' | 181 | 2'6" |
| 6' | 81 | 4'0" |
| 8' | 45 | 5'0" |
| 10' | 29 | 6'6" |
| 15' | 13 | 10'0" |

CCT MULTIPLIER TABLE

| LAMP WATTAGE | MULTIPLIER |
|--------------|------------|
| 20W | 0.32 |
| 35W | 0.57 |

| Filename | 922-50MR16-12-BK-FL.ies | |
|----------|-------------------------|---------------|
| Lamp | 50W MR16 FL | |
| CBCP | 2,000 | |
| D | FC | Beam Diameter |
| 2' | 431 | 1'6" |
| 4' | 106 | 3'0" |
| 6' | 48 | 5'0" |
| 8' | 27 | 6'6" |
| 10' | 17 | 8'0" |
| 15' | 7 | 12'0" |

| Filename | 922-50MR16-12-BK-WFL.ies | |
|----------|--------------------------|---------------|
| Lamp | 50W MR16 WFL | |
| CBCP | 1,200 | |
| D | FC | Beam Diameter |
| 2' | 269 | 2'0" |
| 4' | 67 | 4'6" |
| 6' | 30 | 7'6" |
| 8' | 17 | 9'0" |
| 10' | 11 | 11'6" |
| 15' | 5 | 17'0" |

NOTES AND FORMULAS

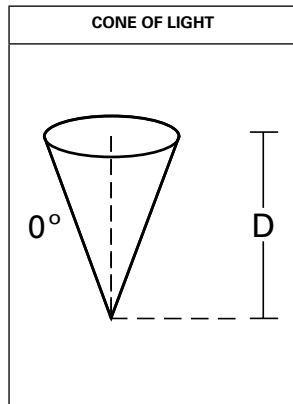
- Beam diameter is to 50% of maximum footcandles, rounded to the nearest half-foot.
- Footcandle values are initial. Apply appropriate light loss factors where necessary.
- Bare lamp data shown. Consult lamp manufacturers to obtain detailed specifications for their lamps.

CAMBRIA 922 LED PHOTOMETRY DATA

LED Lumen and CBCP Table - 4000K

| OPTIC TYPE (beam spread) | BASE + ACCESSORY OPTIONS | 4000K CCT - Standard Hood | | | | | |
|-----------------------------|-----------------------------|---------------------------|--------|-----|------|--------|-----|
| | | 10W | | | 6W | | |
| | | CBCP | LUMENS | LPW | CBCP | LUMENS | LPW |
| 12' | BASE | 7931 | 419 | 45 | 5948 | 314 | 53 |
| | + DIF (DIFFUSE) | 1178 | 289 | 31 | 884 | 217 | 37 |
| | + OSL (OVERALL SPREAD LENS) | 820 | 350 | 38 | 615 | 263 | 45 |
| | + LSL (LINEAR SPREAD LENS) | NA | 343 | 36 | NA | 257 | 44 |
| | + LVR (HEXCELL LOUVER) | 7165 | 339 | 36 | 5374 | 254 | 43 |
| 21' | BASE | 2194 | 344 | 37 | 1646 | 258 | 44 |
| | + DIF (DIFFUSE) | 683 | 241 | 26 | 512 | 181 | 31 |
| | + OSL (OVERALL SPREAD LENS) | 595 | 290 | 32 | 446 | 218 | 37 |
| | + LSL (LINEAR SPREAD LENS) | NA | 282 | 31 | NA | 212 | 36 |
| | + LVR (HEXCELL LOUVER) | 2030 | 249 | 27 | 1523 | 187 | 32 |
| 41' | BASE | 1173 | 304 | 33 | 880 | 228 | 39 |
| | + DIF (DIFFUSE) | 418 | 205 | 22 | 314 | 154 | 26 |
| | + OSL (OVERALL SPREAD LENS) | 595 | 250 | 27 | 446 | 188 | 32 |
| | + LSL (LINEAR SPREAD LENS) | NA | 245 | 27 | NA | 184 | 31 |
| | + LVR (HEXCELL LOUVER) | 1078 | 195 | 21 | 809 | 146 | 25 |

Horizontal Illuminance on Surface - Cambria 922 Standard Recessed Hood -4000K



| Filename: 922-10LED4012-12-BK.ies | | |
|-----------------------------------|--------|---------------|
| Test No.: P184457 | | |
| D | FC | Beam Diameter |
| 2' | 1912.8 | 0.4 |
| 4' | 478.2 | 0.8 |
| 6' | 212.5 | 1.2 |
| 8' | 119.5 | 1.6 |
| 10' | 76.5 | 2.0 |
| 15' | 34.0 | 3.2 |
| 20' | 19.1 | 4.2 |
| 30' | 8.5 | 6.4 |
| 40' | 4.8 | 8.4 |

| Filename: 922-10LED4021-12-BK.ies | | |
|-----------------------------------|-------|---------------|
| Test No.: P185207 | | |
| D | FC | Beam Diameter |
| 2' | 548.5 | 0.6 |
| 4' | 137.1 | 1.3 |
| 6' | 60.9 | 2.1 |
| 8' | 34.3 | 2.8 |
| 10' | 21.9 | 3.6 |
| 15' | 9.8 | 5.3 |
| 20' | 5.5 | 7.2 |
| 30' | 2.4 | 10.6 |
| 40' | 1.4 | 13.9 |

| Filename: 922-10LED4041-12-BK.ies | | |
|-----------------------------------|-------|---------------|
| Test No.: P185957 | | |
| D | FC | Beam Diameter |
| 2' | 290.7 | 0.8 |
| 4' | 72.7 | 1.6 |
| 6' | 32.3 | 2.5 |
| 8' | 18.2 | 3.3 |
| 10' | 11.6 | 4.2 |
| 15' | 5.2 | 6.4 |
| 20' | 2.9 | 8.5 |
| 30' | 1.3 | 12.6 |
| 40' | 0.7 | 16.2 |

CCT MULTIPLIER TABLE

| CCT(K) / COLOR | MULTIPLIER |
|----------------|------------|
| 2700K | 0.79 |
| 3000K | 0.86 |
| 4000K | 1.00 |
| 5700K | 1.05 |
| AMBER | 0.57 |

TECHNICAL INFORMATION

1. Dimming is dependant on remote transformer compatibility with LED module. Please see [compatibility matrix](#) for dimmer switch and transformer selection.
2. When using a magnetic dimmer switch there are two recommended LED compatible 120V magnetic dimming switches:
Lutron Ariadni AVLV-600P and Lutron Diva DVLV-600P
3. IMPORTANT: when sizing the transformer use 9 watts for 6LED or 15 watts for 10LED option fixture. Nominal power draw after start up is 6 watts or 10 watts accordingly. The LED module is designed to operate between 10 and 13 volts. Any less or more voltage can cause premature failures.

LED wall luminaires with directed light

Housing: One piece die-cast aluminum provided with a bracket for attachment to a BEGA 19538 small opening wiring box. Die castings are marine grade, copper free ($\leq 0.3\%$ copper content) A360.0 aluminum alloy.

Enclosure: One piece die-cast aluminum cover frame secured by two (2) captive, stainless steel set screws threaded into stainless steel inserts. Matte safety glass. Fully gasketed for weather tight operation using a molded 'U' channel silicone rubber gasket.

Electrical: 2.1W LED luminaire, 3.4 total system watts, -30°C start temperature. Integral 120V through 277V electronic LED driver. LED module(s) are available from factory for easy replacement. Standard LED color temperature is 3000K with an >90 CRI. Available in 4000K (>90 CRI); add suffix K4 to order.

Note: LEDs supplied with luminaire. Due to the dynamic nature of LED technology, LED luminaire data on this sheet is subject to change at the discretion of BEGA-US. For the most current technical data, please refer to www.bega-us.com.

Finish: All BEGA standard finishes are polyester powder coat with minimum 3 mil thickness. Available in four standard BEGA colors: Black (BLK); White (WHT); Bronze (BRZ); Silver (SLV). To specify, add appropriate suffix to catalog number. Custom colors supplied on special order

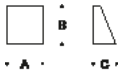
CSA certified to U.S. and Canadian standards, suitable for wet locations. Protection class IP64

Weight: 0.9 lbs.

Luminaire Lumens: 173

Tested in accordance with LM-79-08

Type:
 BEGA Product:
 Project:
 Voltage:
 Color:
 Options:
 Modified:



| | Lamp | A | B | C | Wiring box* |
|---------------|--------------|----|----|----|--------------|
| 22215* | ADA 2.1W LED | 3½ | 3¾ | 2¾ | 19538 |

* Small opening wiring box included.

BEGA 1000 BEGA Way, Carpinteria, CA 93013 (805) 684-0533 FAX (805) 566-9474 www.bega-us.com

©copyright BEGA 2017 Updated 02/17