



PORT CITY ARCHITECTURE

65 NEWBURY STREET
PORTLAND, ME 04101
207.761.9000

Consultants:

DESIGN DEVELOPMENT

WILLIAMS 5 UNIT RESIDENCE
24 St Lawrence Street
Portland, Maine

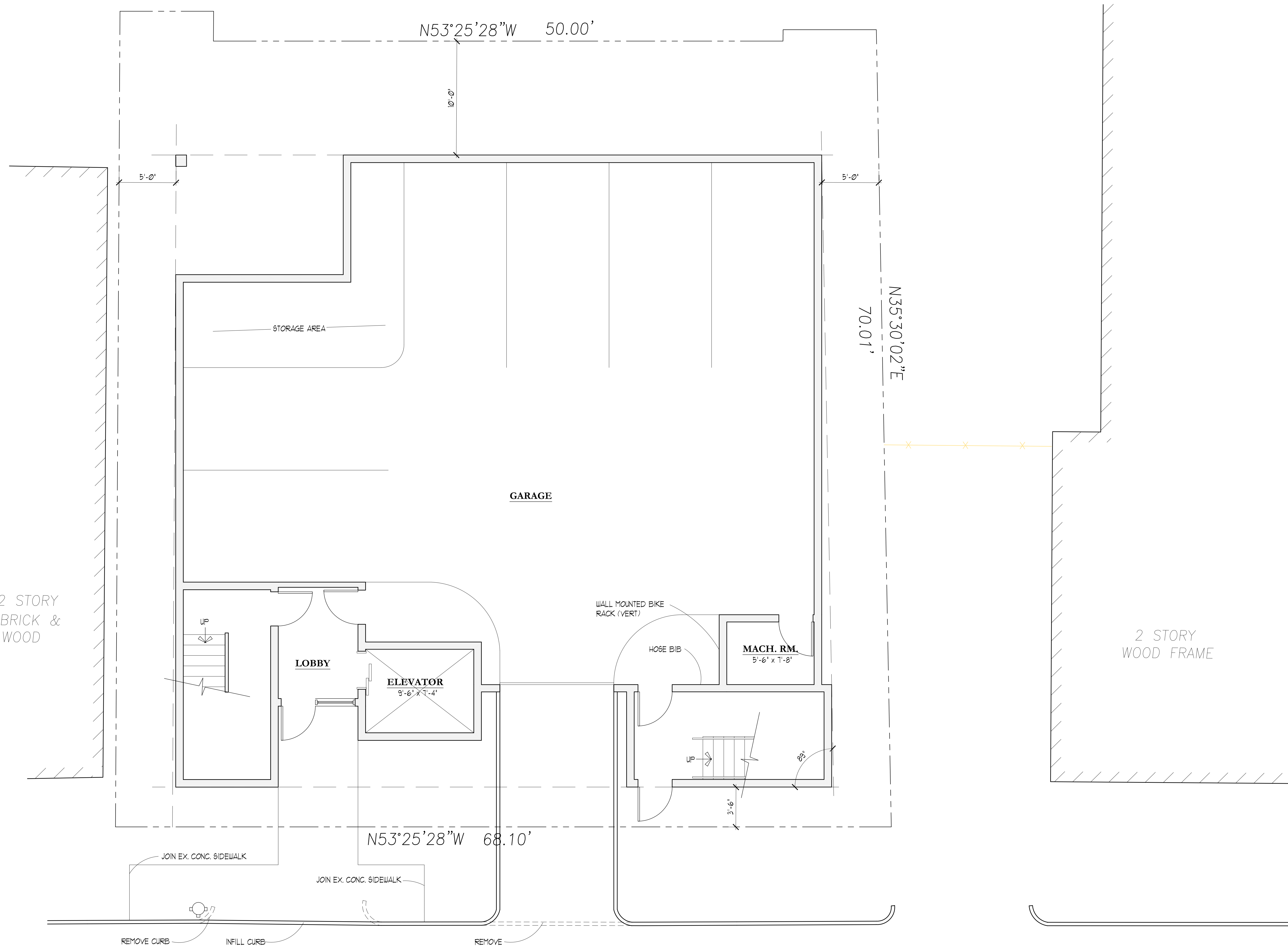
#	DATE	DESCRIPTION

Date Issued: JUNE 6, 2017
Project Number: 16015
Drawing Scale: 1/8" = 1'-0"

SITE / FLOOR PLAN

Drawn By: JAF, CG
Checked By: MC

A 1.0



1 FLOOR PLAN - GARAGE

SCALE: 1/4" = 1'-0"

