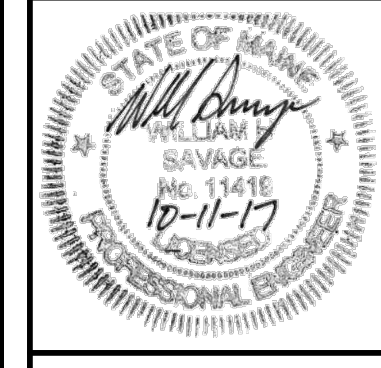


ISSUED FOR	BY
CITY APP.	WHS
	12/2/17

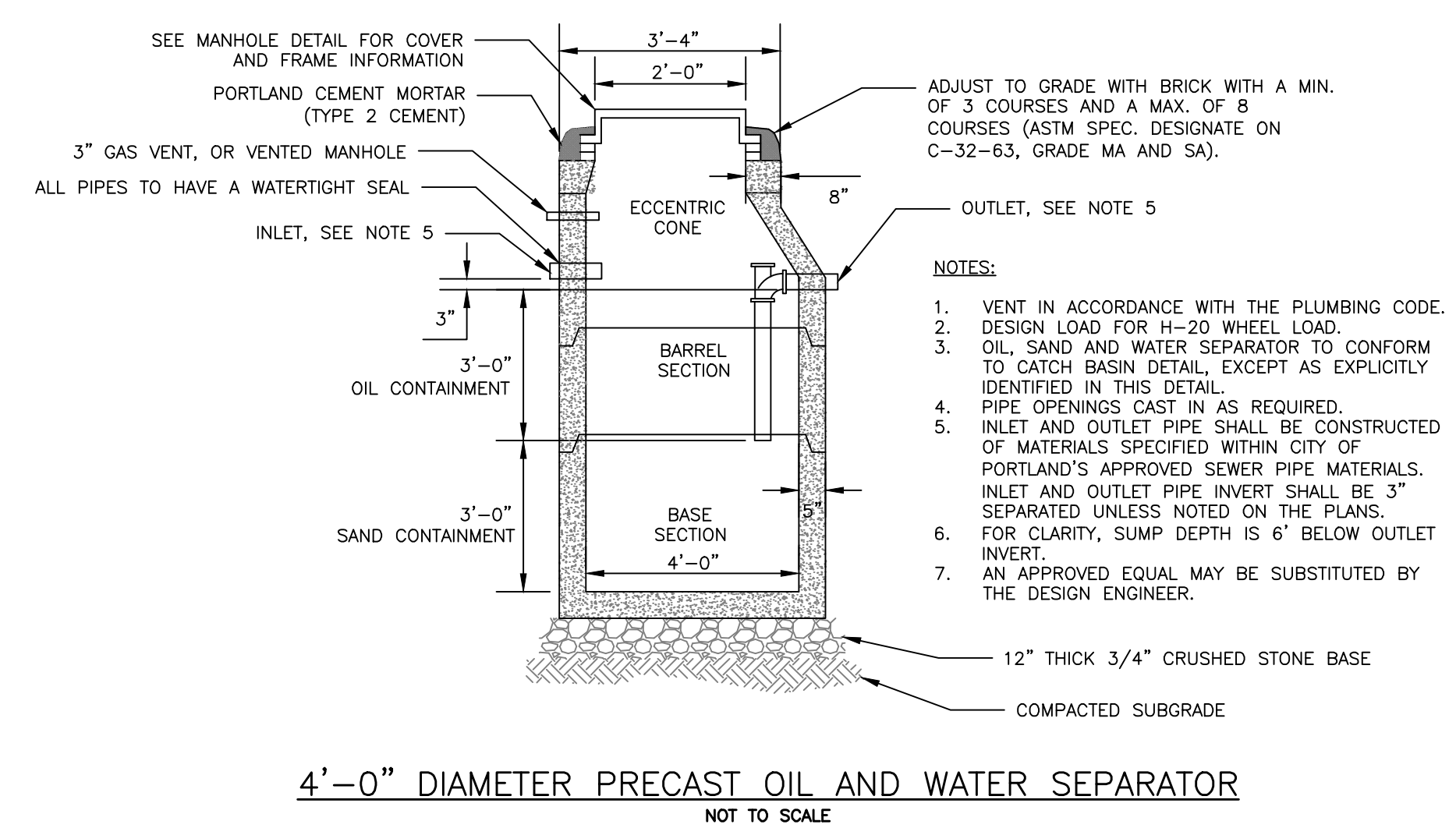
UTILITY DETAILS - 2  
 PROJECT NAME: 24 ST. LAWRENCE STREET REDEVELOPMENT  
 CLIENT: HR PROPERTY MANAGEMENT  
 24 ST. LAWRENCE STREET, PORTLAND, ME 04101

DRAWING NAME: ACCOR ENGINEERING, INC.  
 PROJECT NUMBER: 1088\_CIVIL  
 CLIENT: HR PROPERTY MANAGEMENT  
 24 ST. LAWRENCE STREET, PORTLAND, ME 04101  
 158 BANGOR ST. PORTLAND, MAINE 04102  
 (207) 775-2655

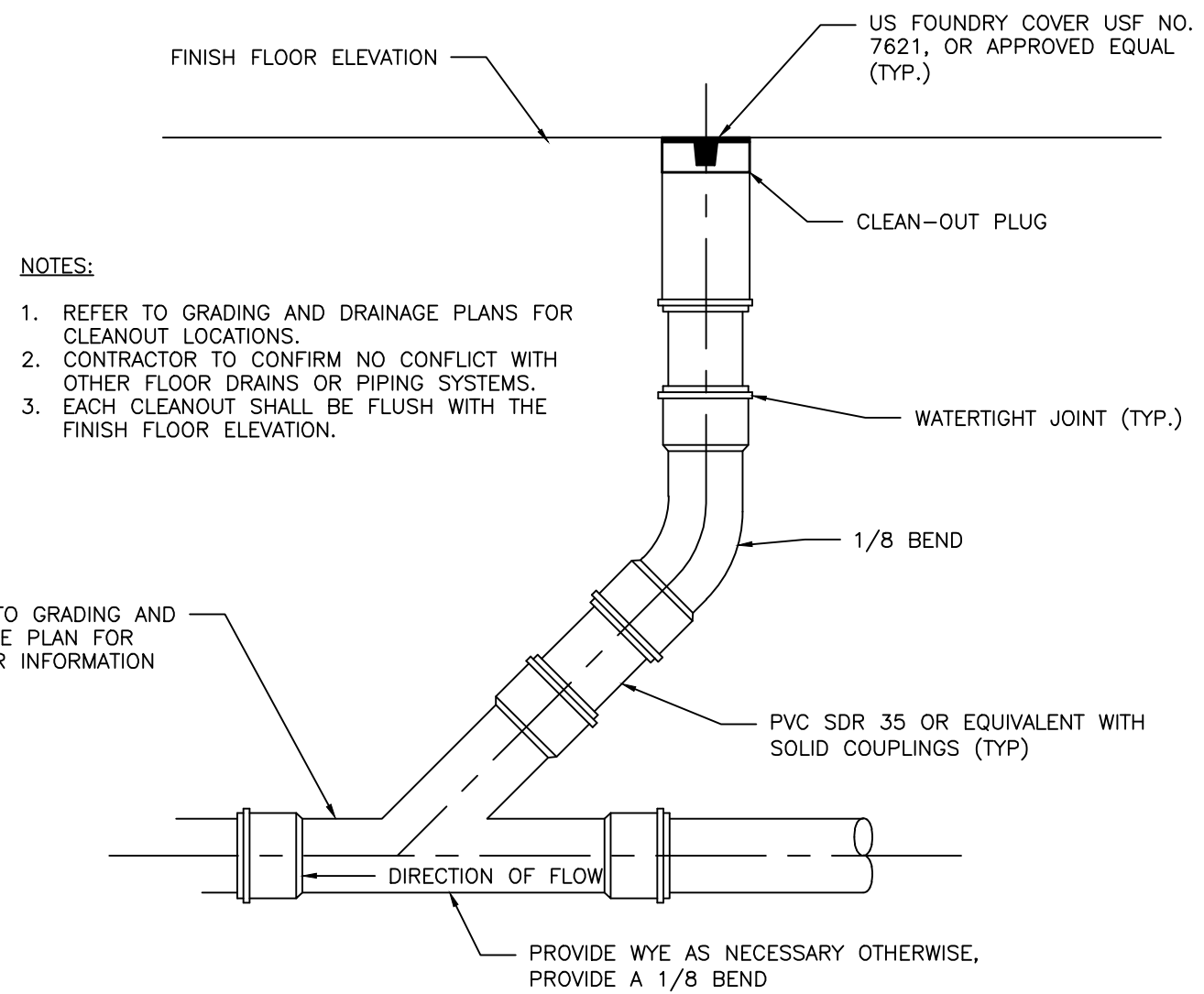
FILE: 1088\_CIVIL  
 JN: 1088  
 SCALE: NTS  
 DESIGNED BY: WHS  
 DRAWN BY: ADG  
 CHECKED BY: WHS



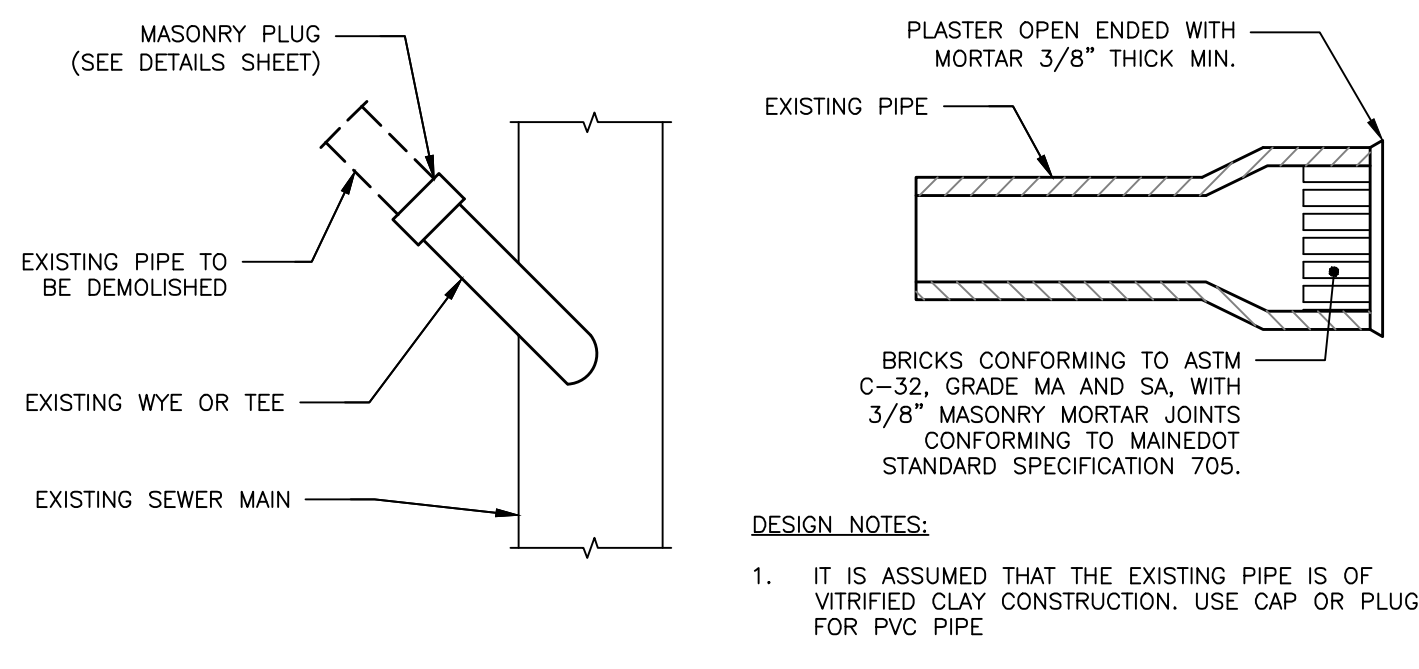
DRAWING NO. C-43



4'-0" DIAMETER PRECAST OIL AND WATER SEPARATOR  
 NOT TO SCALE

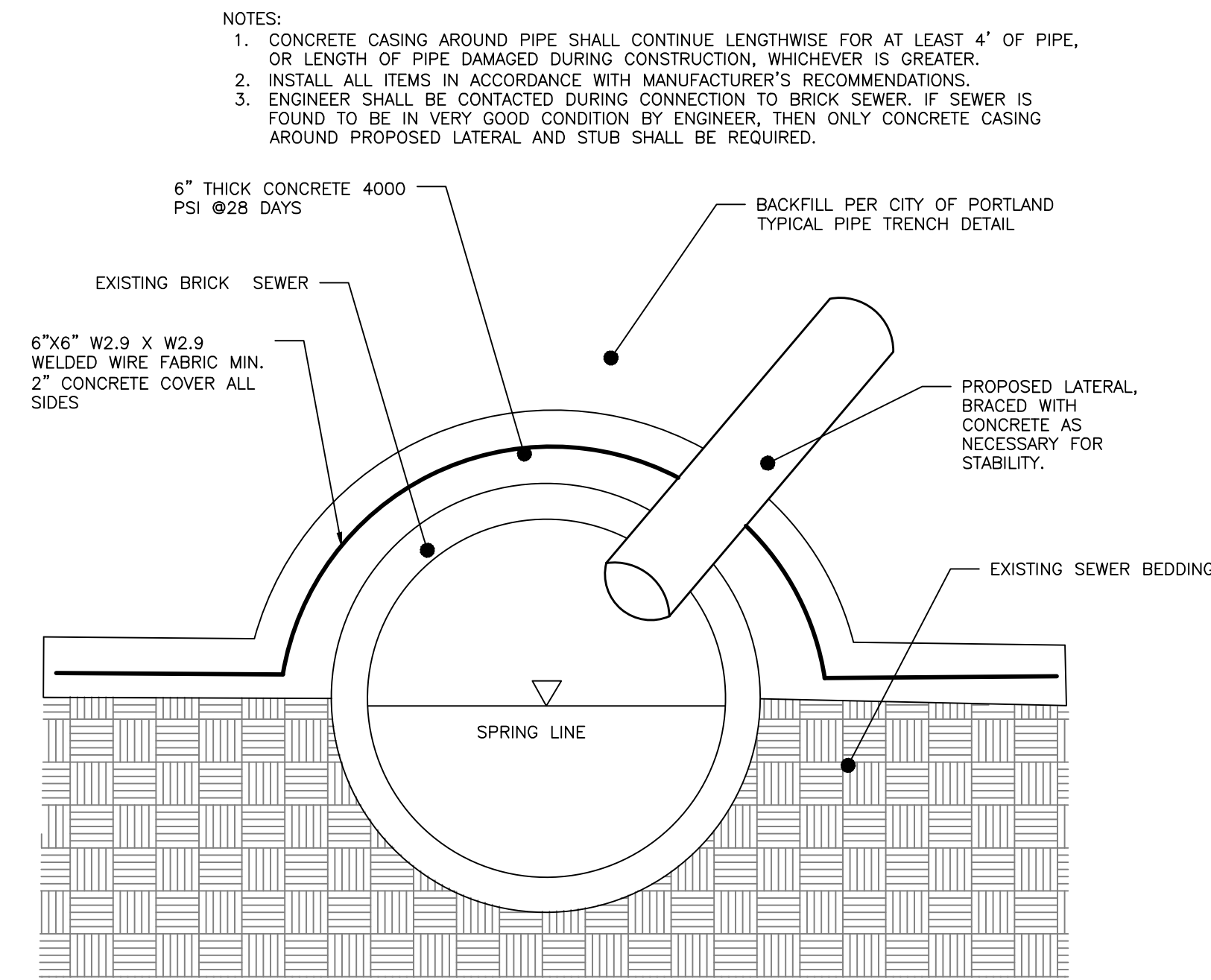


CLEANOUT DETAIL  
 NOT TO SCALE

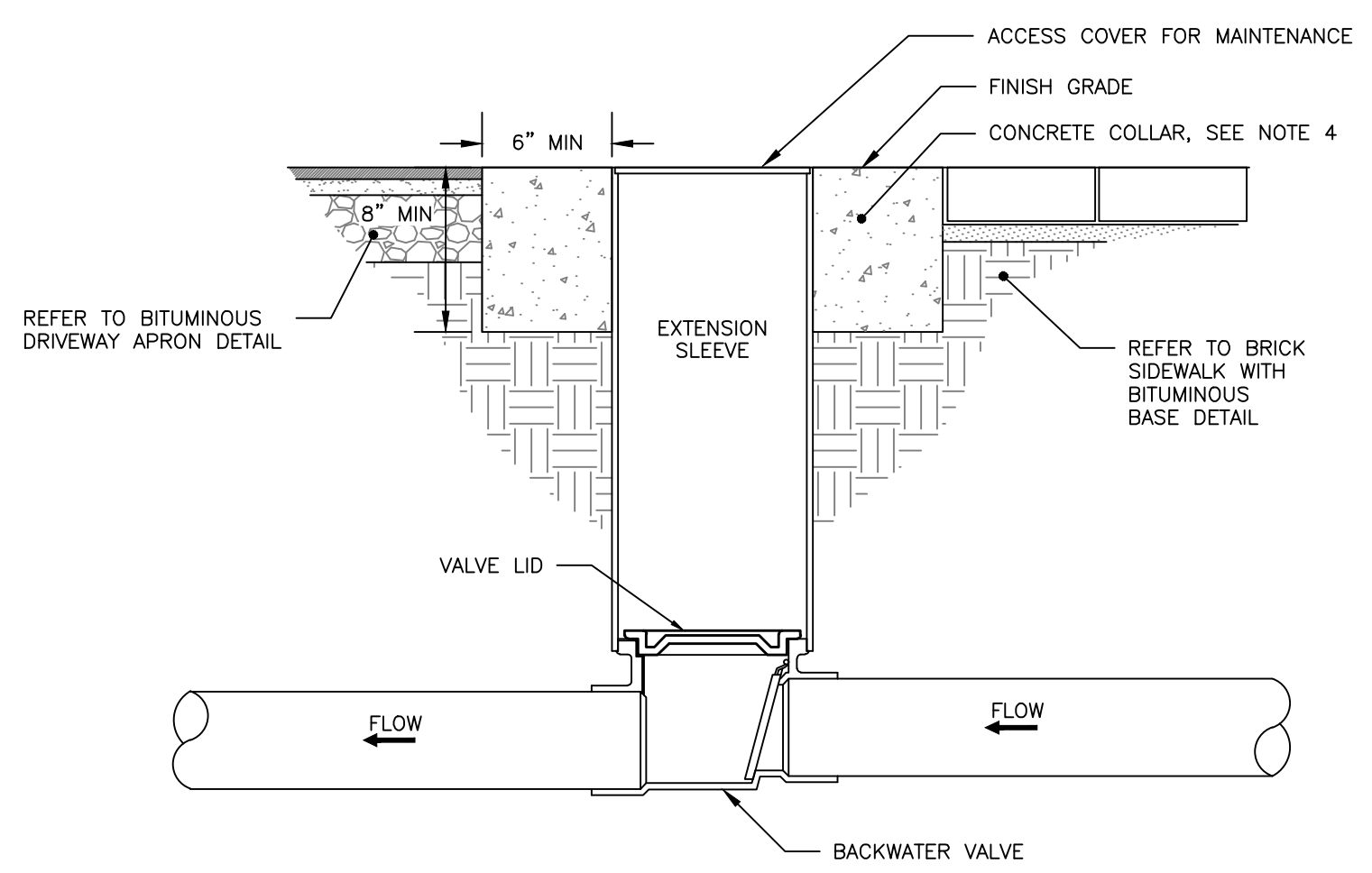


MASONRY PLUG DETAIL  
 NOT TO SCALE

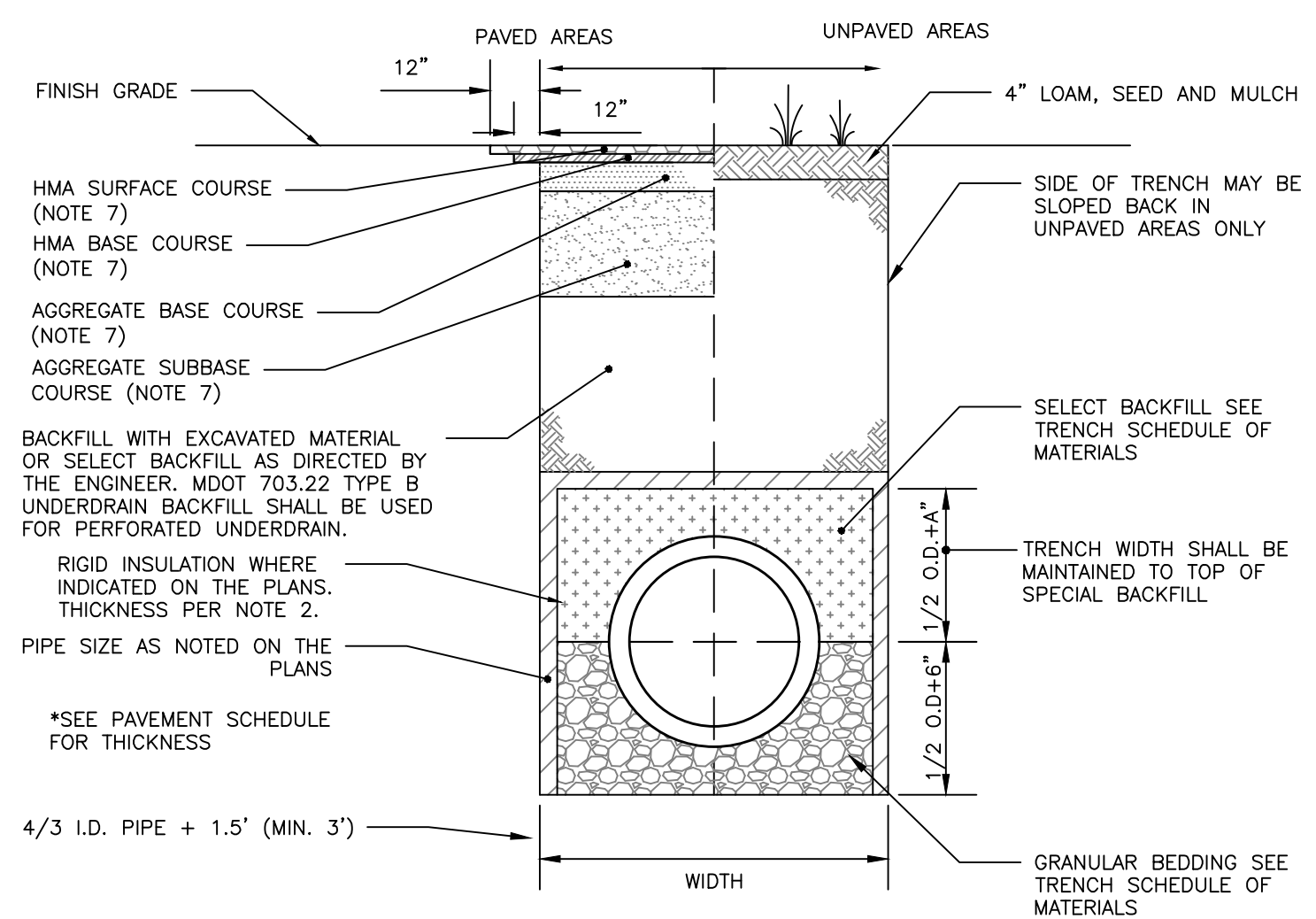
PERMIT LEVEL  
 NOT ISSUED FOR  
 CONSTRUCTION



CONNECTION TO BRICK SEWER  
 NOT TO SCALE



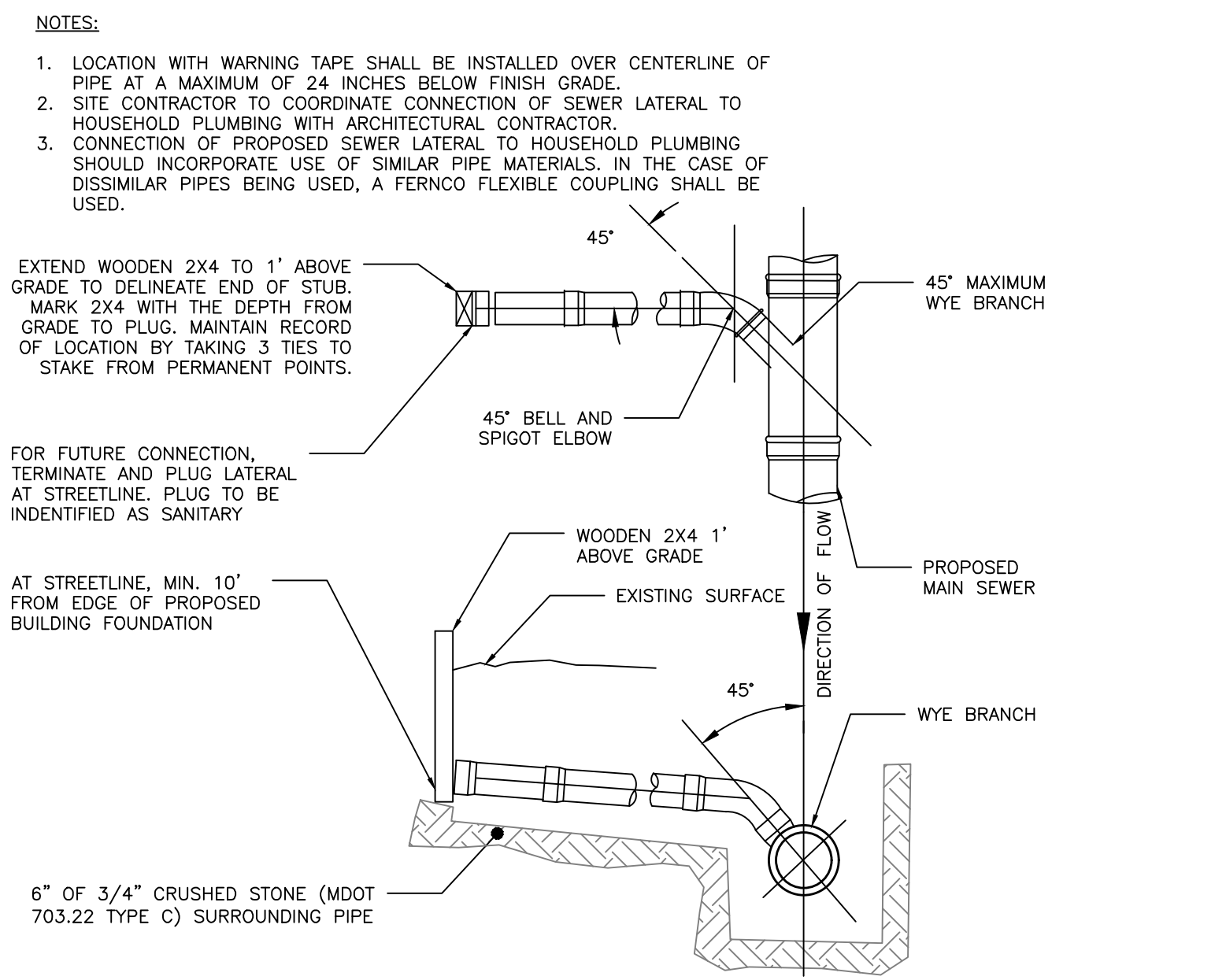
BACKFLOW VALVE ASSEMBLY  
 NOT TO SCALE



STORM DRAIN AND SEWER TYPICAL TRENCH SECTION WITHIN PROPERTY  
 NOT TO SCALE

SCHEDULE OF MATERIALS		
TYPE OF PIPE	GRANULAR BEDDING	SELECT BACKFILL
CMP DUCTILE IRON RCP	MDOT 703.22 TYPE B UD BACKFILL	MDOT 703.22 TYPE B UD BACKFILL
PVC/HDPE	MDOT 703.22 TYPE C 3/4" CRUSHED STONE	MDOT 703.22 TYPE B UD BACKFILL
CMP	MDOT 703.22 TYPE C 3/4" CRUSHED STONE	MDOT 703.22 TYPE C 3/4" CRUSHED STONE

- NOTES:
- BRACING AND SHEETING OR OTHER TRENCH PROTECTION TO BE PROVIDED TO MEET APPLICABLE STATE AND O.S.H.A. SAFETY STANDARDS. ALL SUCH TRENCH PROTECTION TO BE THE RESPONSIBILITY OF THE CONTRACTOR.
  - STORM DRAIN COVER BETWEEN 2' AND 3' SHALL INCLUDE 4" OF RIGID INSULATION. COVER BETWEEN 3' AND 4' SHALL INCLUDE 2" RIGID INSULATION. OTHER UTILITIES: ADD 2" OF RIGID INSULATION FOR EACH FOOT ABOVE MINIMUM DEPTH.
  - INSTALL WARNING TAPE DIRECTLY ABOVE UTILITIES AT THE TOP OF SUBGRADE.
  - MINIMUM COVER
    - 2'-0" - STORM DRAIN
    - 5'-0" - SEWER
  - NO TREES SHALL BE PLANTED WITHIN 5' OF A SEWER PIPE OR SERVICE.
  - THIS DETAIL SHALL BE APPLIED ONLY TO DRAINAGE PIPE TRENCHES OUTSIDE OF THE CITY OF PORTLAND ROW. THICKNESS AS NOTED BY SURFACE DETAILS.
  - ALL PROPOSED TREES PLANTED WITHIN 10' OF A STORM OR SEWER PIPE SHALL BE PLANTED AT A DEPTH NO GREATER THAN 3' DEEP. PERMEABLE LANDSCAPE FABRIC SHALL CREATE A ROOT BARRIER AROUND THE PIPES. CONTRACTOR SHALL COORDINATE WITH THE LANDSCAPE DRAWINGS.



SEWER TEE/WYE CONNECTION DETAIL  
 NOT TO SCALE