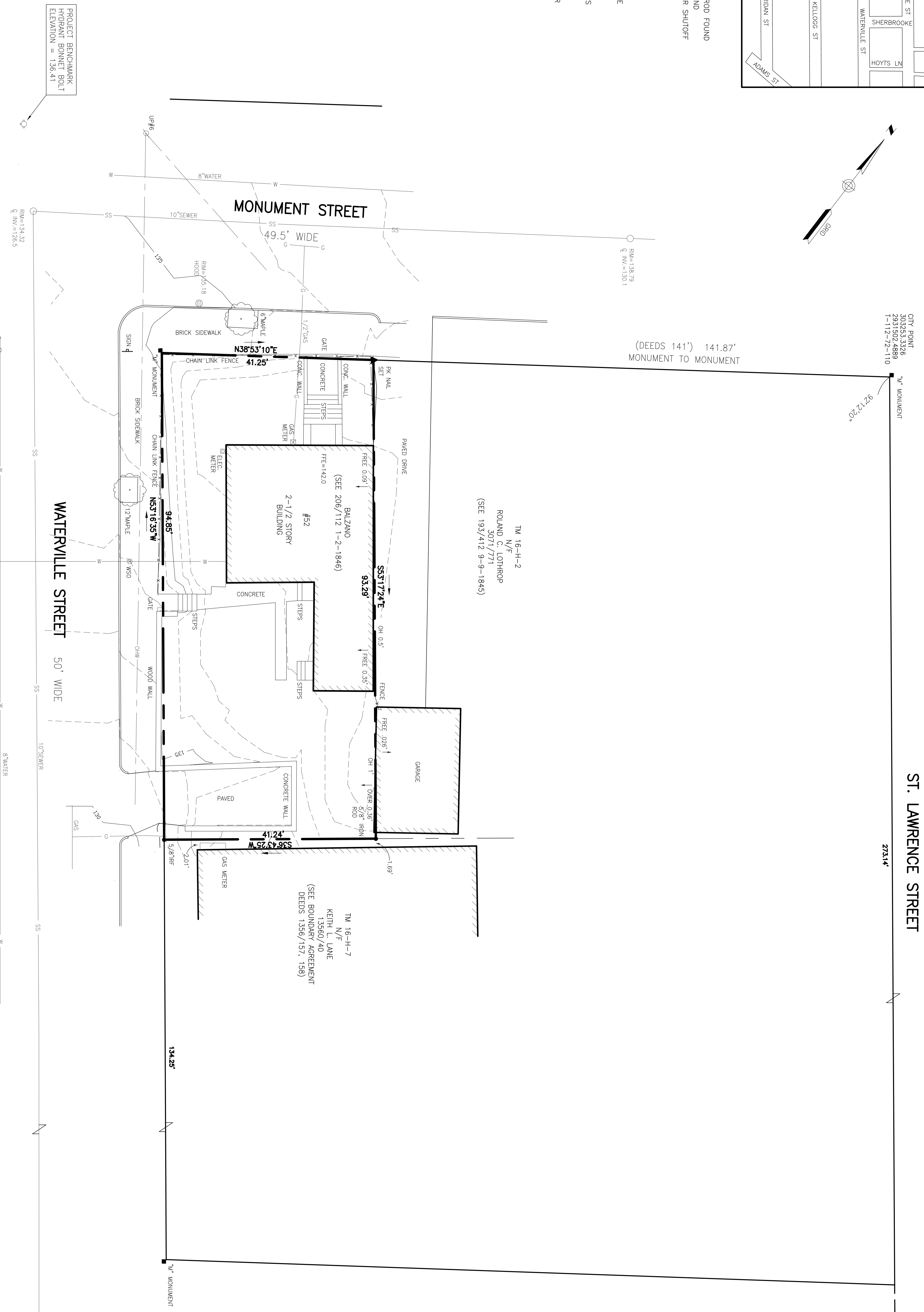
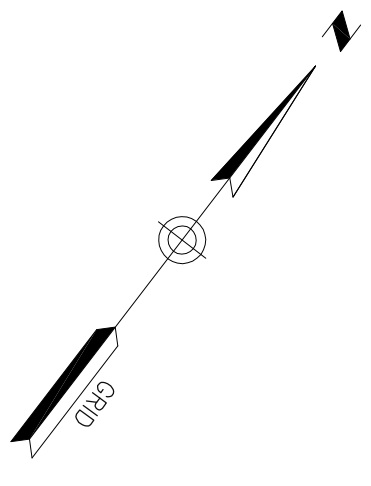


- LEGEND**
- IRON PIPE OR ROD FOUND
  - MONUMENT FOUND
  - ⊗ WATER VALVE OR SHUTOFF
  - ⊕ HYDRANT
  - UTILITY POLE
  - MANHOLE
  - ⊕ CATCH BASIN
  - SIGN
  - DECIDUOUS TREE
  - FENCE
  - CURB
  - OHW
  - OVERHEAD WIRES
  - G GAS LINE
  - W WATER LINE
  - SS SANITARY SEWER
  - 1' CONTOUR



**UTILITY NOTE:**

THE UNDERGROUND UTILITIES SHOWN HAVE BEEN LOCATED FROM FIELD SURVEY AND RECORD MAPS. THE SURVEYOR HAS NOT BEEN ADVISED BY ANY AGENCY THAT THE UNDERGROUND UTILITIES SHOWN COMPRISE ALL SUCH UTILITIES IN THE AREA, EITHER IN SERVICE OR ABANDONED. THE SURVEY FURTHER DOES NOT WARRANT THAT THE UNDERGROUND UTILITIES SHOWN ARE IN THE EXACT LOCATION AND DEPTH INDICATED. THE USER OF THIS PLAN SHALL BE RESPONSIBLE FOR VERIFYING THE PHYSICAL LOCATION OF THE UNDERGROUND UTILITIES. CALL 1-800-DIGSAFE AT LEAST THREE BUSINESS DAYS BEFORE PERFORMING ANY CONSTRUCTION.

**PLAN REFERENCES**

1. STANDARD BOUNDARY SURVEY OF ST. LAWRENCE STREET, CONDOMINIUMS AT 94-96 ST. LAWRENCE STREET, PORTLAND, ME, MADE FOR BASSMAN REDEVELOPMENT, LLC DECEMBER 08, 1999, REVISED JAN. 10, 2000 BY OWEN HASKELL, INC.
2. PLAN SURVEYED BY E. C. JORDAN & CO. CIVIL ENGINEERS PORTLAND, MAINE DECEMBER 1927, FILE NO. P-66.
3. CITY OF PORTLAND ENGINEERING DEPARTMENT RIGHT OF WAY PLANS 140 AND 188.
4. STANDARD BOUNDARY SURVEY ON MONUMENT ST. & WATERVILLE ST., PORTLAND, MAINE MADE FOR ANNE E. BALZANO, FEBRUARY 27, 2003 BY OWEN HASKELL, INC.

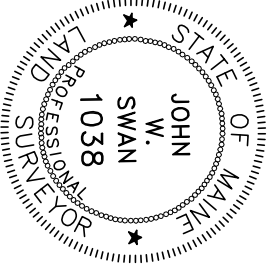
**NOTES**

1. CORNER OF RECORD: ANNE E. BALZANO, 52 MONUMENT STREET, PORTLAND, MAINE C.O.R.D. BOOK 2859 PAGE 496.
2. LOCUS IS SHOWN AS LOT 16-H-3 ON THE CITY OF PORTLAND'S ASSESSORS MAPS.
3. BEARINGS ARE BASED ON CITY DATUM, MAINE STATE PLANE WEST, NAD 83.
4. THE THREE LOTS BETWEEN WATERVILLE STREET AND ST. LAWRENCE STREETS, AND THE STREETS THEMSELVES, WERE CREATED BETWEEN 1845 AND 1849. THE DEEDS INDICATE THAT THERE SHOULD BE 141 FEET BETWEEN SAID STREETS AND THE STREETS SHOULD BE PARALLEL. THE LOT NOW OF LOTHROP WAS CREATED FIRST WITHOUT ANY MARKERS. THIS PARALLEL WAS DETERMINED BY THE SURVEYOR'S FIELD MEASUREMENTS AND THE INSTRUMENTS USED. THEREFORE THE FRONTAGE ON MONUMENT STREET AND THE ANGLE OF THE SIDELINE OFF MONUMENT STREET WERE PROPORTIONED. THIS DOES NOT BE ADRESSED BY AN ATTORNEY. A BOUNDARY AGREEMENT BETWEEN ADJUTERS WOULD RESOLVE ANY QUESTIONS.
5. ELEVATIONS ARE BASED ON CITY DATUM. THE CITY CONTROL POINT USED WAS 1-104-35-3 (GRANITE MONUMENT WITH PLUG AT THE NORTHEASTERLY CORNER OF CONGRESS ST. AND NORTH ST. ELEVATION = 146.697).

**CERTIFICATE**

OWEN HASKELL, INC. CERTIFIES THAT THIS PLAN IS BASED ON, AND THE RESULT OF, AN ON THE GROUND FIELD SURVEY AND THAT TO THE BEST OF OUR KNOWLEDGE, INFORMATION AND BELIEF, IT CONFORMS TO THE BOARD OF LICENSURE FOR PROFESSIONAL LAND SURVEYORS CURRENT STANDARDS OF PRACTICE.

DATE: 10/29/13  
 JOHN M. SWAN, PLS. NO. 1038



**BOUNDARY & TOPOGRAPHIC SURVEY**

AT  
 52 MONUMENT STREET, PORTLAND, MAINE  
 MADE FOR  
**DIANNE BALZANO**  
 1833 KILBOURNE PL NW, WASHINGTON, DC

**OWEN HASKELL, INC.**  
 390 U.S. ROUTE ONE, PALMOUTH, ME 04106 (207) 774-0424  
 PROFESSIONAL LAND SURVEYORS

Drawn By	RS	Date	Job No.
Trace By	JLW	OCTOBER 29, 2013	2013-182P
Check By	JWS	Scale	Dwg. No.
Book No.	936.1123	1" = 10'	1