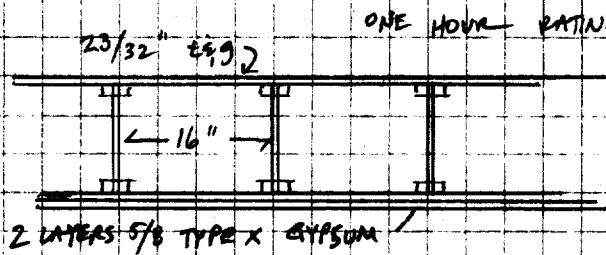
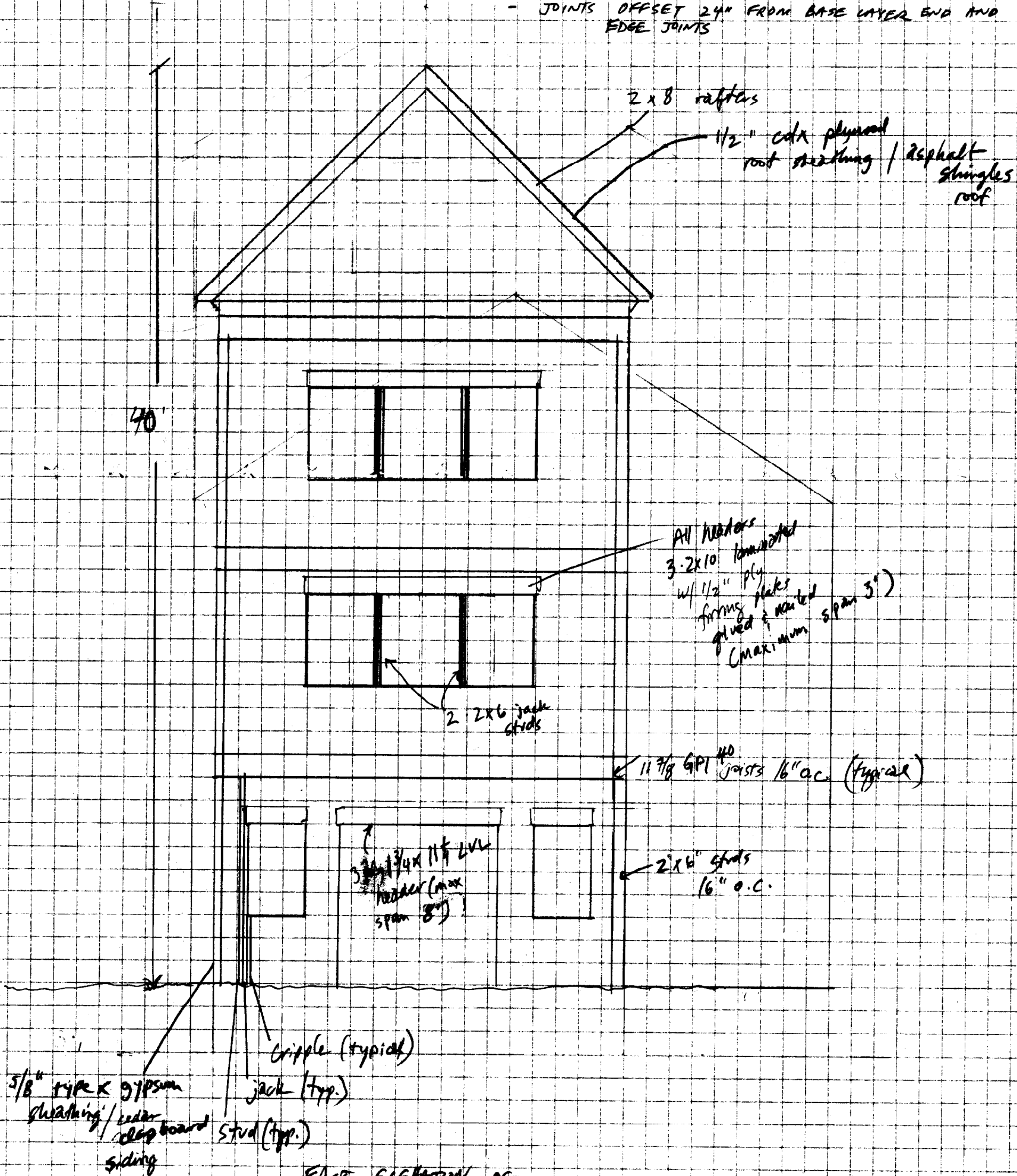


ASSEMBLY FOR FIRE RESISTANCE SHALL BE AS FOLLOWS:

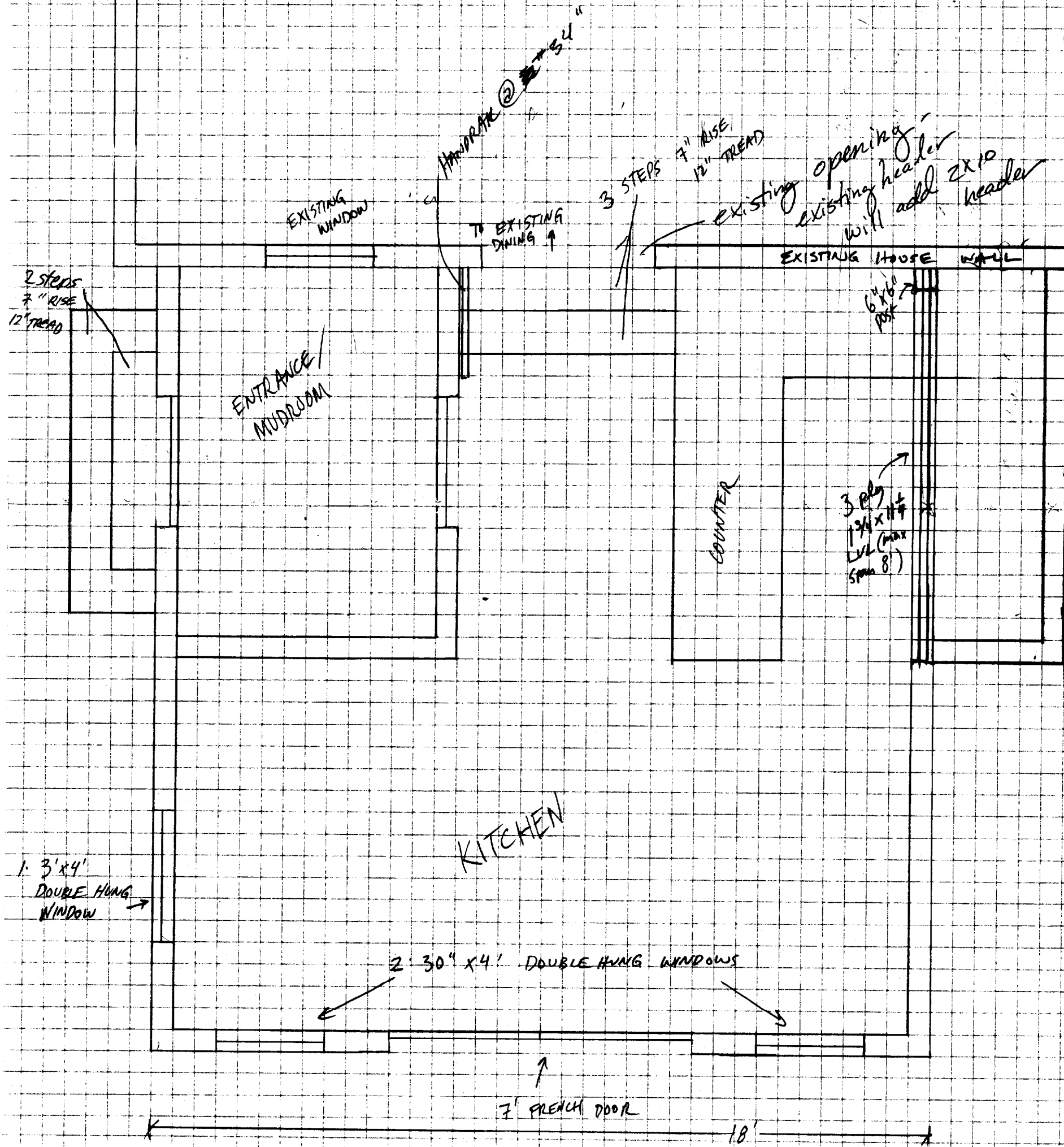


- ALL FLOORS SHALL BE 23/32" T & G, PERPENDICULAR TO JOISTS @ 16", GLED W/ CONSTRUCTION ADHESIVE AND NAILED WITH 8 D COMMON NAILS @ 6" ϕ
- ALL CEILINGS SHALL HAVE 2 LAYERS 5/8 TYPE X GYPSUM SHEETROCK, PERPENDICULAR TO JOISTS; FASTENED FOR BASE LAYER 1 1/4" S TYPE DRYWALL SCREW 24" O.C.; FACE LAYER: 1 7/8" TYPE G DRYWALL SCREW @ JOINTS AND INTERMEDIATE JOISTS & 1 1/2" TYPE G SCREWS 12" O.C. @ 2' FROM END JOISTS
- JOINTS OFFSET 24" FROM BASE LAYER END AND EDGE JOINTS



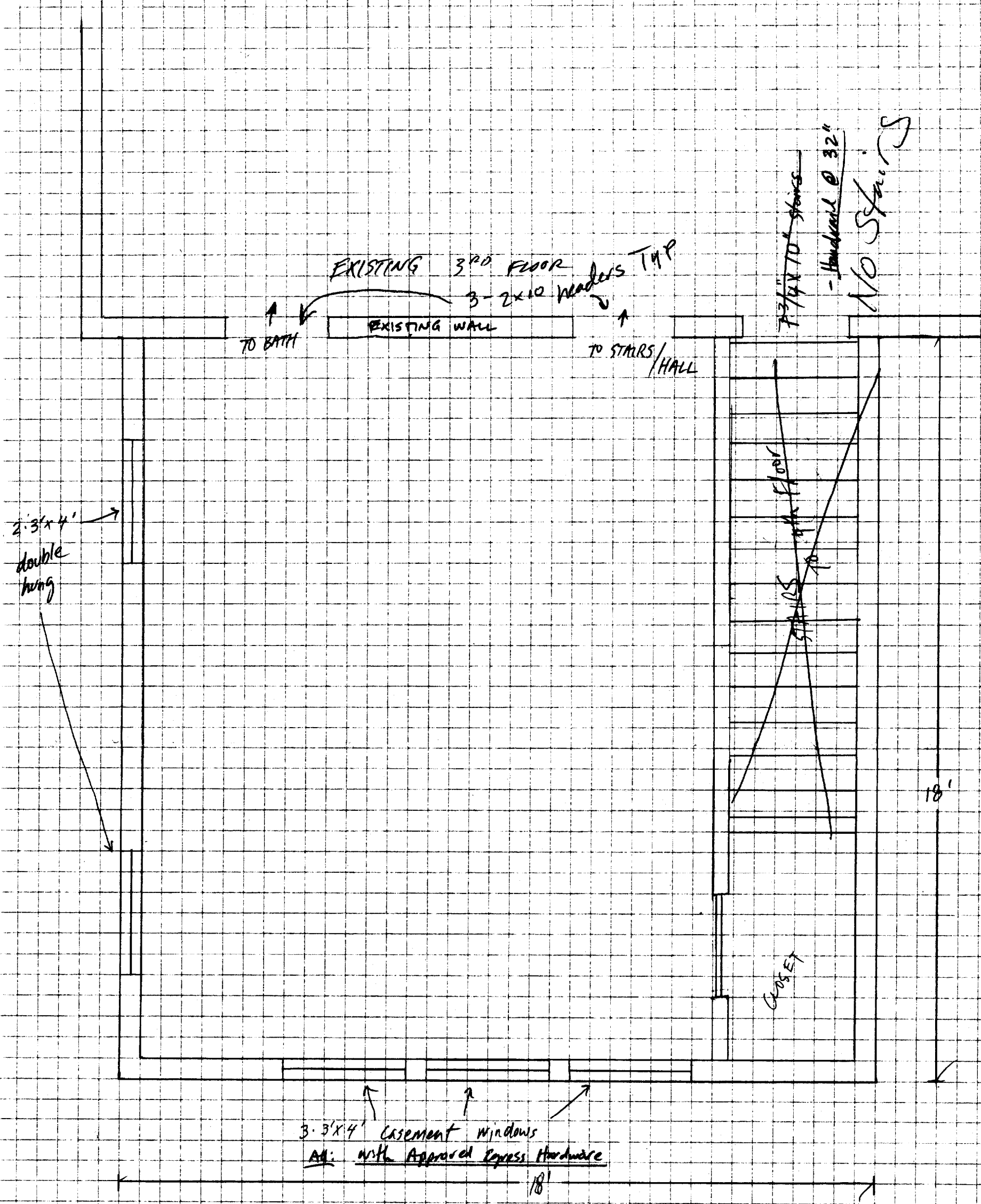
EAST ELEVATION OF
PROPOSED 18' X 18' ADDITION
48 MONUMENT ST.
PORTLAND, ME

Scale 1" = 5'



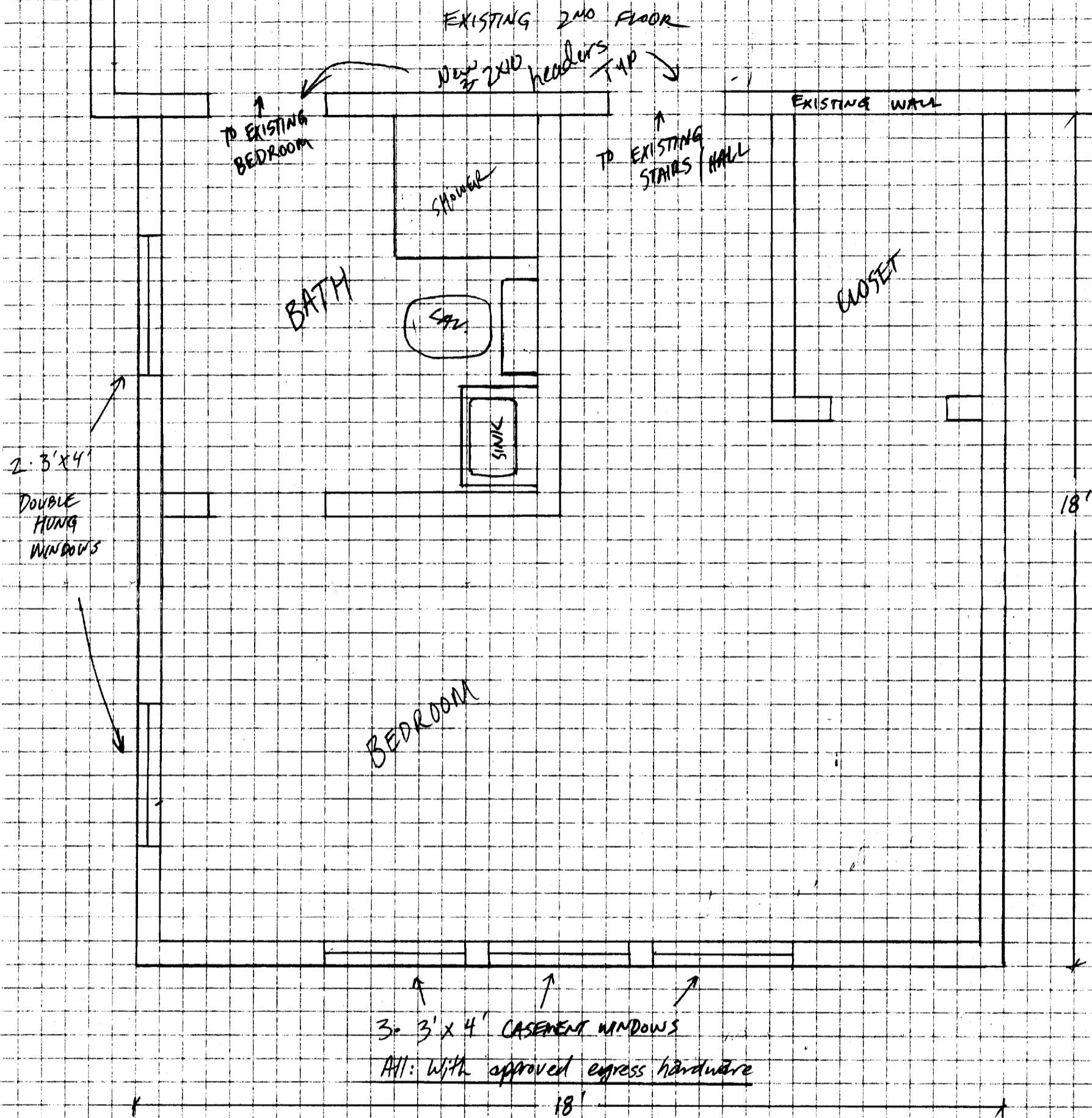
1ST FLOOR KITCHEN
 ADDITION TO 48 MONUMENT STREET

SCALE 1" = 2 1/2"



3rd FLOOR BEDROOM
 ADDITION TO 48 MONUMENT ST.

Scale 1" = 2 1/2'



2ND FLOOR BEDROOM / BATH

Scale 1" = 2 1/2'

ADDITION TO 48 MONUMENT STREET