

- GENERAL NOTES:
1. FIRE ALARM SYSTEM WIRING SHALL COMPLY WITH THE NATIONAL ELECTRICAL CODE, APPLICABLE STATE AND LOCAL CODES AND SHALL BE COORDINATED WITH THE LOCAL AUTHORITY HAVING JURISDICTION.
 2. CAUTION: DO NOT CONNECT ANY POWER TO THE CONTROL PANEL (BATTERIES OR 120V AC) UNTIL ALL OTHER FIELD WIRING IS TESTED AND CONNECTED.
 3. DO NOT INSTALL FIRE ALARM CONTROL PANEL OR SMOKE DETECTORS IN AN UNHEATED AREA.
 4. DO NOT INSTALL ANY AC CURRENT-CARRYING CONDUCTORS CLOSE TO OR IN THE SAME RACEWAY WITH FIRE ALARM SYSTEM CONDUCTORS.
 5. SOLID LINES REPRESENT CONNECTIONS TO BE MADE BY THE SYSTEM INSTALLER.
 6. SEE MODEL LWM 401 INSTALLATION MANUAL FOR ADDITIONAL WIRING INSTRUCTIONS.
 7. ALL RELAYS ARE SHOWN IN NORMAL SUPERVISORY CONDITION. ALL RELAYS ARE FORM "C" TYPE.

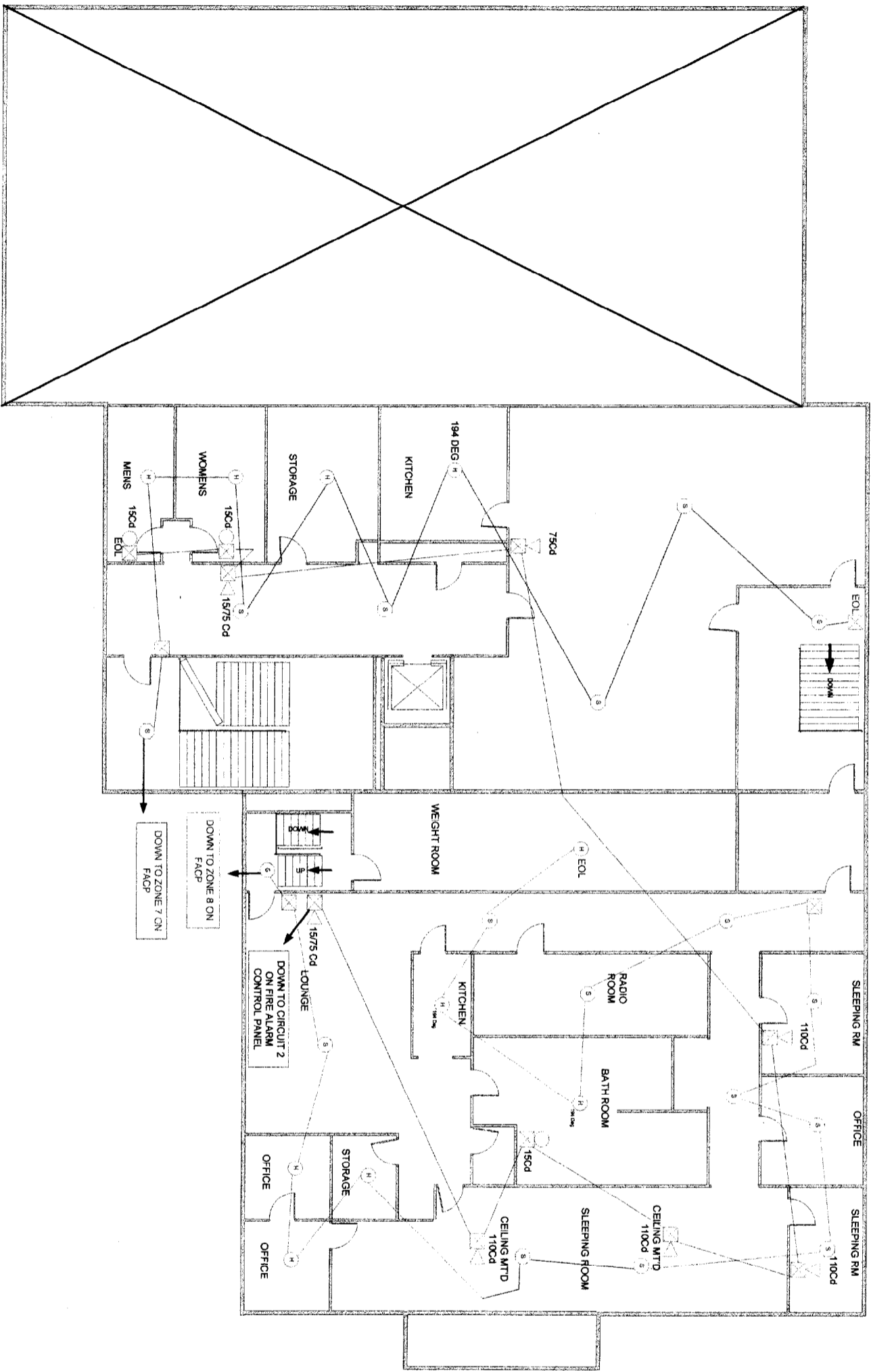
CONSULTANT: **PROTECTION PROFESSIONALS**
 Phone: (207) 775-5755
 Fax: (207) 775-1895
 139 Newbury Street
 Portland, ME 04101

PROJECT: **MUNJOY HILL FIRE DEPT AND CUMMINGS CENTER**

DRAWING: **FIRST FLOOR DEVICES LAYOUT AND WIRING**

REVISIONS:

DATE: 11/06/2002
 SCALE: NTS
 DRAWN: SFA
 APPROVED:
 SHEET



- GENERAL NOTES:
1. FIRE ALARM SYSTEM WIRING SHALL COMPLY WITH THE NATIONAL ELECTRICAL CODE APPLICABLE STATE AND LOCAL CODES, AND SHALL BE COORDINATED WITH THE LOCAL AUTHORITY HAVING JURISDICTION.
 2. CAUTION: DO NOT CONNECT ANY POWER TO THE CONTROL PANEL (BATTERIES OR 120V AC) UNTIL ALL OTHER FIELD WIRING IS TESTED AND CONNECTED.
 3. DO NOT INSTALL FIRE ALARM CONTROL PANEL OR SMOKE DETECTORS IN AN UNHEATED AREA.
 4. DO NOT INSTALL ANY AC CURRENT CARRYING CONDUCTORS CLOSE TO OR IN THE SAME RACEWAY WITH FIRE ALARM SYSTEM CONDUCTORS.
 5. SOLID LINES REPRESENT CONNECTIONS TO BE MADE BY THE SYSTEM INSTALLER.
 6. SEE MODEL 1.W 401 INSTALLATION MANUAL FOR ADDITIONAL WIRING INSTRUCTIONS.
 7. ALL RELAYS ARE SHOWN IN NORMAL SUPERVISORY CONDITION. ALL RELAYS ARE FORM "C" TYPE.

CONSULTANT: **PROTECTION PROFESSIONALS**
 Phone: (207) 775-5755
 Fax: (207) 775-1895
 139 Newbury Street
 Portland, ME 04101

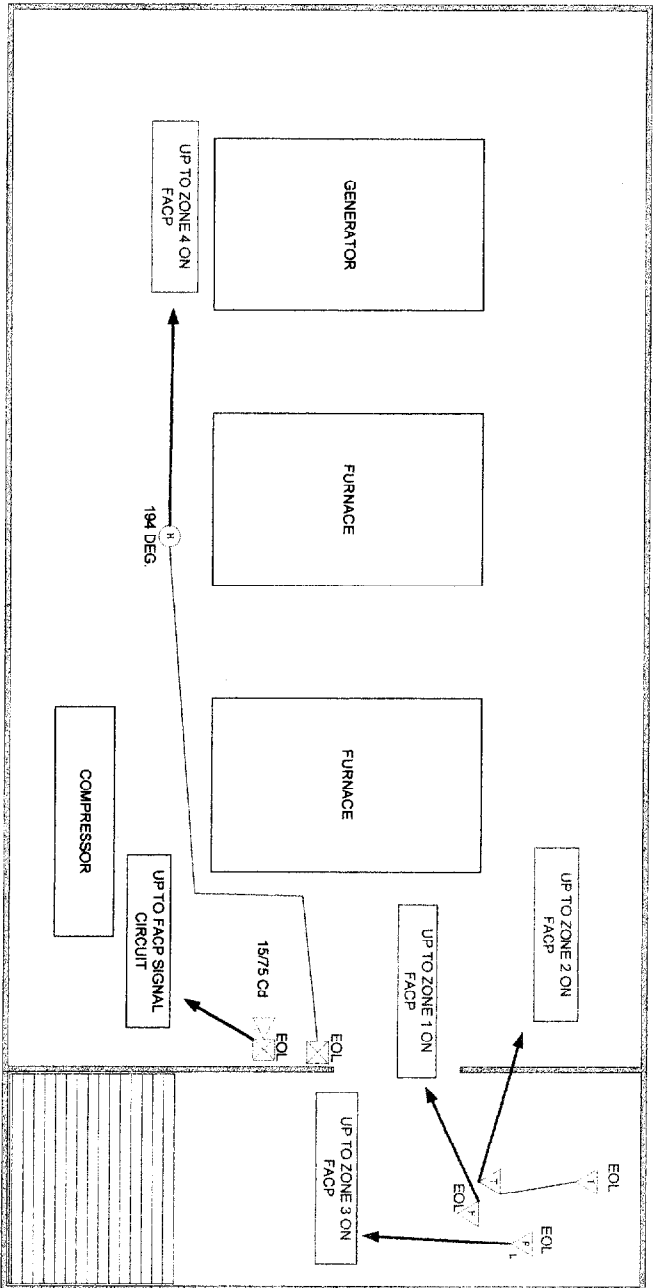
PROJECT: **MUNJOY HILL FIRE DEPT. AND CUMMINGS CENTER**

DRAWING: **SECOND FLOOR DEVICE AND WIRING LAYOUT**

REVISIONS

DATE: 11/08/2002
 SCALE: NTS
 DRAWN: SFA
 APPROVED:
 SHEET:

- GENERAL NOTES
1. FIRE ALARM SYSTEM WIRING SHALL COMPLY WITH THE NATIONAL ELECTRICAL CODE, APPLICABLE STATE AND LOCAL CODES, AND SHALL BE COORDINATED WITH THE LOCAL AUTHORITY HAVING JURISDICTION.
 2. CAUTION: DO NOT CONNECT ANY POWER TO THE CONTROL PANEL (BATTERIES OR 120V AC) UNTIL ALL OTHER FIELD WIRING IS TESTED AND CONNECTED.
 3. DO NOT INSTALL FIRE ALARM CONTROL PANEL OR SMOKE DETECTORS IN AN UNHEATED AREA.
 4. DO NOT INSTALL ANY AC CURRENT-CARRYING CONDUCTORS CLOSE TO OR IN THE SAME RACEWAY WITH FIRE ALARM SYSTEM CONDUCTORS.
 5. SOLID LINES REPRESENT CONNECTIONS TO BE MADE BY THE SYSTEM INSTALLER.
 6. SEE MODEL, LW 401 INSTALLATION MANUAL FOR ADDITIONAL WIRING INSTRUCTIONS.
 7. ALL RELAYS ARE SHOWN IN NORMAL SUPERVISORY CONDITION. ALL RELAYS ARE FORM "C" TYPE.



DRAWING:
**BASEMENT FLOOR
 DEVICE AND WIRING LAYOUT**

PROJECT:
**MUNJOY HILL FIRE DEPT.
 AND
 CUMMINGS CENTER**

CONSULTANT:
**PROTECTION
 PROFESSIONALS**
 Phone: (207) 775-5755
 Fax: (207) 775-1895
 139 Newbury Street
 Portland, ME 04101

REVISIONS

DATE: 11/08/2002
 SCALE: NTS
 DRAWN: SFA
 APPROVED

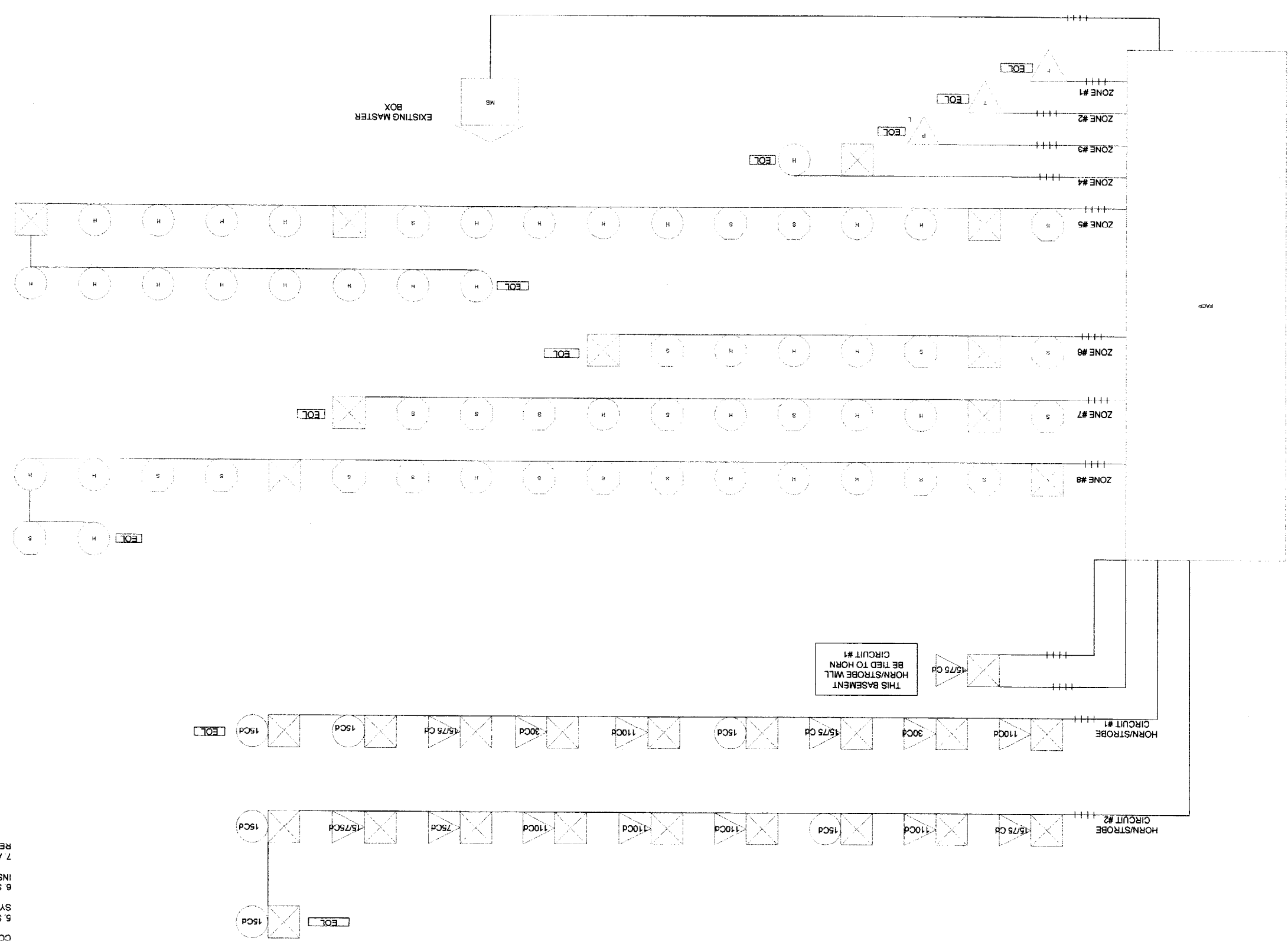
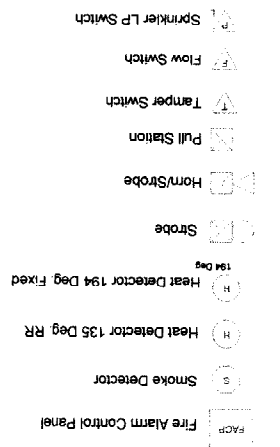
F-4
 SHEET:
 APPROVED
 DRAWN: SFA
 SCALE: NTS
 DATE: 11/06/02

DRAWING:
 REVISIONS
 FIRE ALARM
 RISER LAYOUT

PROJECT:
 MUNJOY HILL FIRE DEPT.
 AND
 CLIMMINGS CNTRR

CONSULTANT:
 PROTECTION
 PROFESSIONALS
 139 Newbury Street
 Portland, ME 04101
 Phone: (207) 775-5755
 Fax: (207) 775-1895

GENERAL NOTES:
 1 FIRE ALARM SYSTEM WIRING SHALL COMPLY WITH THE NATIONAL ELECTRICAL CODE, APPLICABLE STATE AND LOCAL CODES, AND SHALL BE COORDINATED WITH THE LOCAL AUTHORITY HAVING JURISDICTION.
 2 CAUTION: DO NOT CONNECT ANY POWER TO THE CONTROL PANEL (BATTERIES OR 120V AC) UNTIL ALL OTHER FIELD WIRING IS TESTED AND CONNECTED.
 3 DO NOT INSTALL FIRE ALARM CONTROL PANEL OR SMOKE DETECTORS IN AN UNHEATED AREA.
 4 DO NOT INSTALL ANY AC CURRENT-CARRYING CONDUCTORS CLOSE TO OR IN THE SAME RACEWAY WITH FIRE ALARM SYSTEM CONDUCTORS.
 5 SOLID LINES REPRESENT CONNECTIONS TO BE MADE BY THE SYSTEM INSTALLER.
 6 SEE MODEL LWF 401 INSTALLATION MANUAL FOR ADDITIONAL WIRING INSTRUCTIONS.
 7 ALL RELAYS ARE SHOWN IN NORMAL SUPERVISORY CONDITION. ALL RELAYS ARE FORM "C" TYPE.



FACE